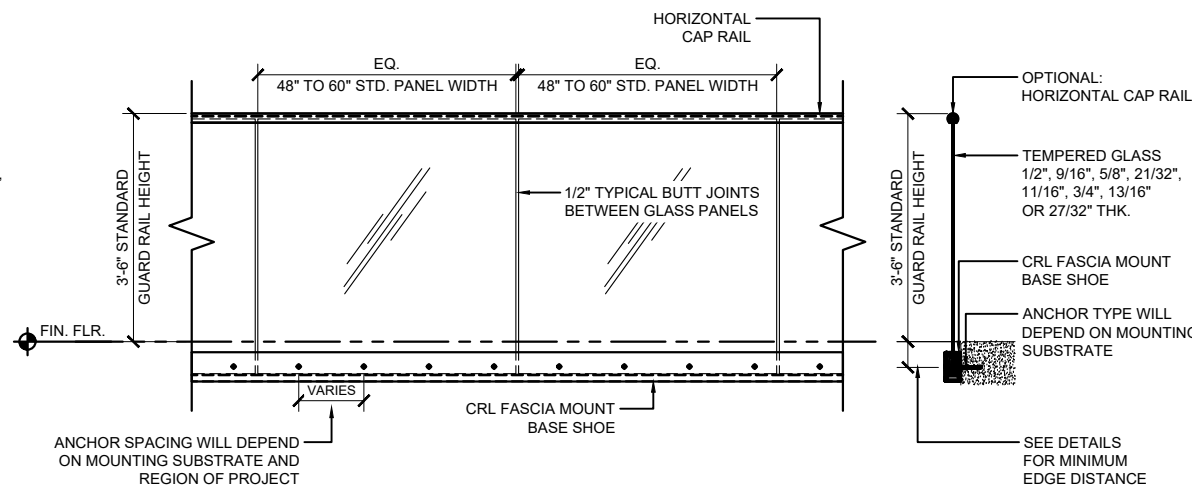


TYPICAL TURBOFLEX GLASS RAILING ELEVATION VIEW - SURFACE MOUNT



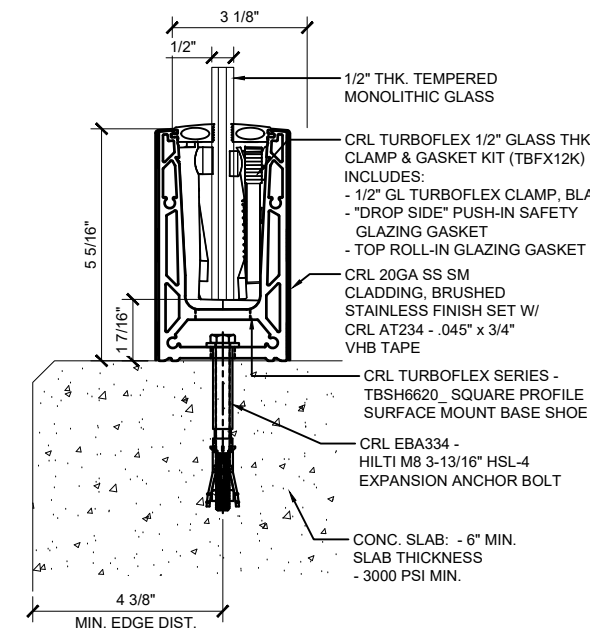
TYPICAL TURBOFLEX GLASS RAILING ELEVATION VIEW - FASCIA MOUNT

MONOLITHIC GLASS				
NOMINAL	RANGE THICKNESS		Cat No.	
In.	mm	In.	mm	
1/2	12	0.47	0.51	11 54 12 95
5/8	16	0.59	0.64	14 99 16 29
3/4	19	0.73	0.76	18 54 19 30

LAMINATED GLASS						
NOMINAL	RANGE THICKNESS		INTERLAYER	Cat No.		
In.	mm	In.	mm			
9/16	12.76	0.50	0.60	12.57 11.51 0.06	1.50	TBFX916K
21/32	16.76	0.65	0.71	16.51 18.03 0.06	1.50	TBFX2132FX
11/16	17.52	0.67	0.73	17.02 18.54 0.09	2.29	TBFX1116K
13/16	20.76	0.77	0.85	19.56 21.59 0.06	1.50	TBFX1316K
27/32	21.52	0.80	0.88	20.32 22.35 0.09	2.29	TBFX2732K

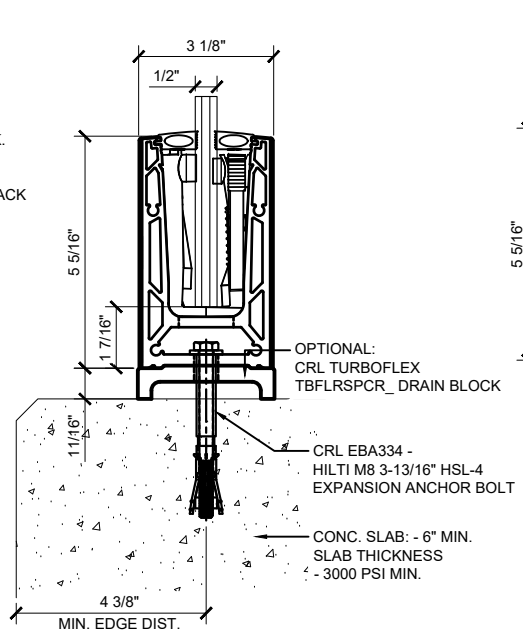
*NOTE: HIGH SIDE OF GLASS RANGE MAY RESULT IN LIMITED ADJUSTMENT DEGREE

TYPICAL TURBOFLEX SURFACE-MOUNT BASE SHOE ATTACHMENTS FOR 1/2" GLASS WITH STAINLESS STEEL CLADDING.



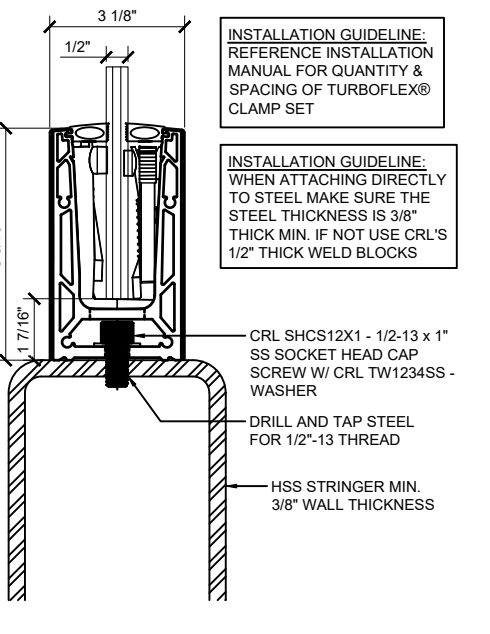
SURFACE MOUNT DETAIL CONCRETE SUBSTRATE

6" AND 12" (305MM) O.C. SPACING IS STANDARD. ANCHOR SPACING WILL DEPEND ON MOUNTING SUBSTRATE AND REGION OF PROJECT



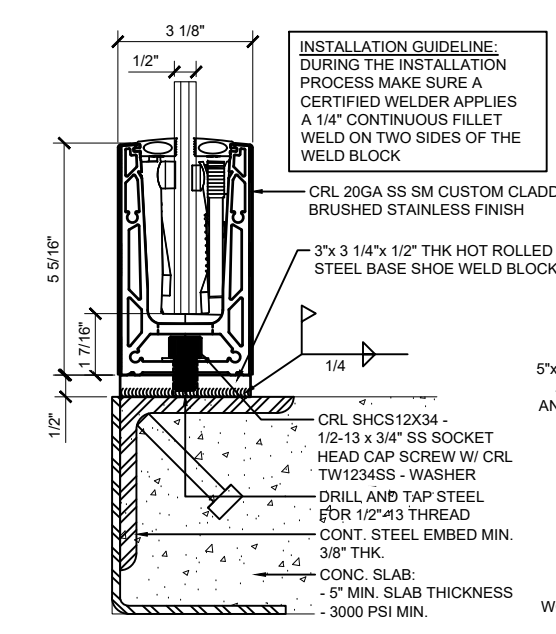
SURFACE MOUNT DETAIL CONCRETE SUBSTRATE W/ DRAIN BLOCK

6" AND 12" (305MM) O.C. SPACING IS STANDARD. ANCHOR SPACING WILL DEPEND ON MOUNTING SUBSTRATE AND REGION OF PROJECT



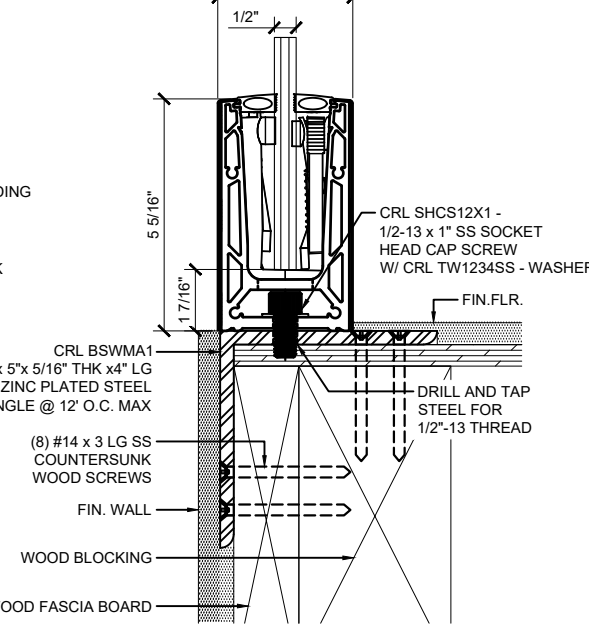
SURFACE MOUNT DETAIL STEEL SUBSTRATE

6" AND 12" (305MM) O.C. SPACING IS STANDARD. ANCHOR SPACING WILL DEPEND ON MOUNTING SUBSTRATE AND REGION OF PROJECT



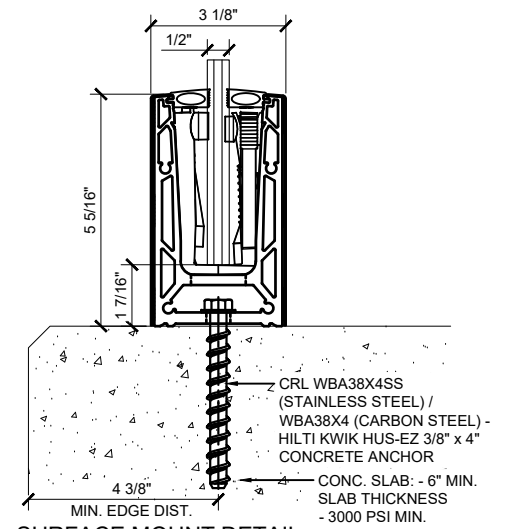
SURFACE MOUNT DETAIL STEEL SUBSTRATE W/ WELD BLOCK

6" AND 12" (305MM) O.C. SPACING IS STANDARD. ANCHOR SPACING WILL DEPEND ON MOUNTING SUBSTRATE AND REGION OF PROJECT



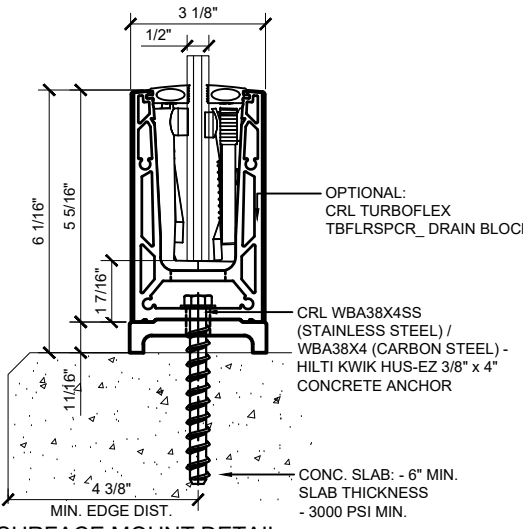
SURFACE MOUNT DETAIL WOOD SUBSTRATE

6" AND 12" (305MM) O.C. SPACING IS STANDARD. ANCHOR SPACING WILL DEPEND ON MOUNTING SUBSTRATE AND REGION OF PROJECT



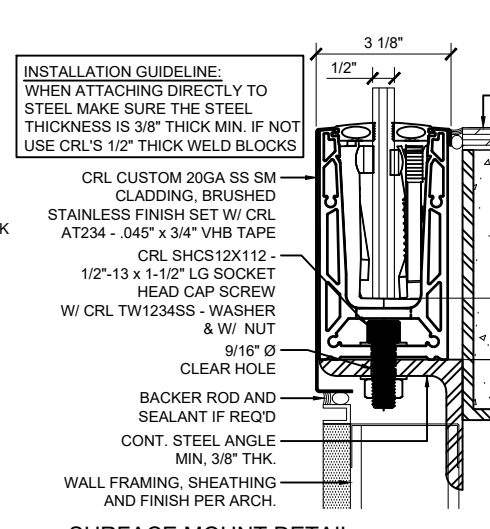
SURFACE MOUNT DETAIL CONCRETE SUBSTRATE

6" AND 12" (305MM) O.C. SPACING IS STANDARD. ANCHOR SPACING WILL DEPEND ON MOUNTING SUBSTRATE AND REGION OF PROJECT



SURFACE MOUNT DETAIL CONCRETE SUBSTRATE W/ DRAIN BLOCK

6" AND 12" (305MM) O.C. SPACING IS STANDARD. ANCHOR SPACING WILL DEPEND ON MOUNTING SUBSTRATE AND REGION OF PROJECT



SURFACE MOUNT DETAIL STEEL SUBSTRATE W/ CUSTOM CLADDING

6" AND 12" (305MM) O.C. SPACING IS STANDARD. ANCHOR SPACING WILL DEPEND ON MOUNTING SUBSTRATE AND REGION OF PROJECT

Revisions By:

△	-	-
△	-	-
△	-	-
△	-	-
△	-	-

CRL

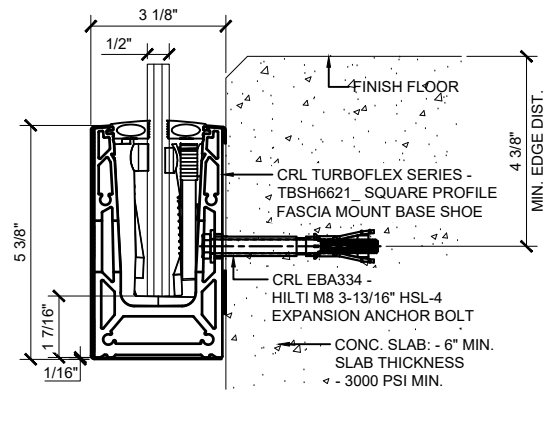
C.R. LAURENCE CO. ARCHITECTURAL PRODUCTS
2500 E. Verrano Avenue, Los Angeles, CA 90058-1897
PH (800)-421-6144 FX (800)-987-7301 www.crlaurence.com

TURBOFLEX
GLASS RAILING SYSTEM
FOR TEMPERED MONOLITHIC AND
LAMINATED GLASS

ELEVATIONS AND SECTIONS
SURFACE MOUNT OPTIONS

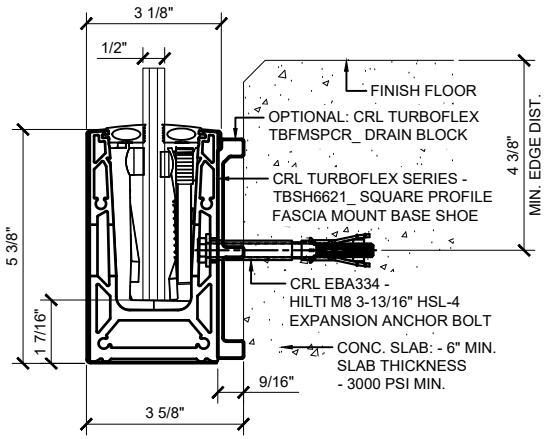
Drawn By: EDR
Date: 10/21/25
Scale: AS NOTED
File Name: SYS0133A_TURBOFLEX_GRS.dwg
Sheet

TYPICAL TURBOFLEX FASCIA-MOUNT BASE SHOE ATTACHMENTS FOR 1/2" GLASS WITH STAINLESS STEEL CLADDING.



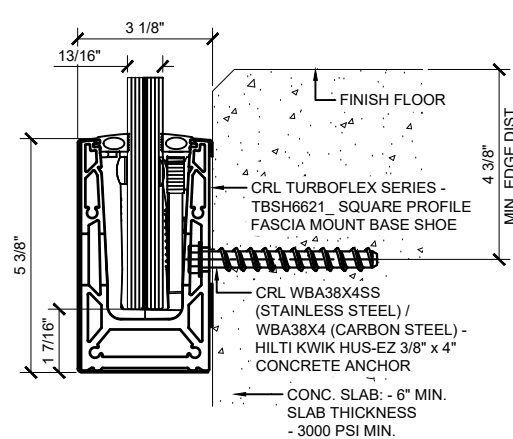
**FASCIA MOUNT DETAIL
CONCRETE SUBSTRATE**

6" AND 12" (305MM) O.C. SPACING IS STANDARD. ANCHOR SPACING WILL DEPEND ON MOUNTING SUBSTRATE AND REGION OF PROJECT



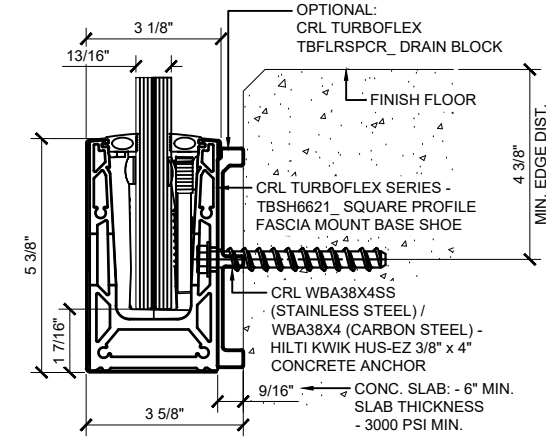
**FASCIA MOUNT DETAIL
CONCRETE SUBSTRATE**

6" AND 12" (305MM) O.C. SPACING IS STANDARD. ANCHOR SPACING WILL DEPEND ON MOUNTING SUBSTRATE AND REGION OF PROJECT



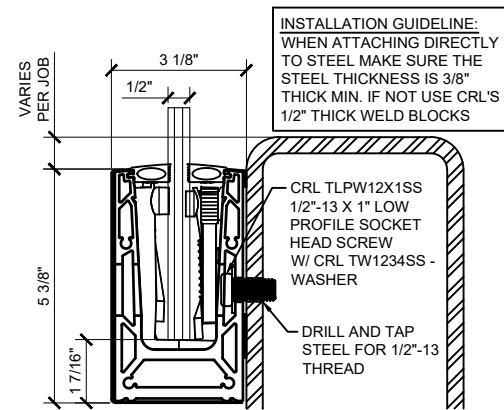
**FASCIA MOUNT DETAIL
CONCRETE SUBSTRATE**

6" AND 12" (305MM) O.C. SPACING IS STANDARD. ANCHOR SPACING WILL DEPEND ON MOUNTING SUBSTRATE AND REGION OF PROJECT



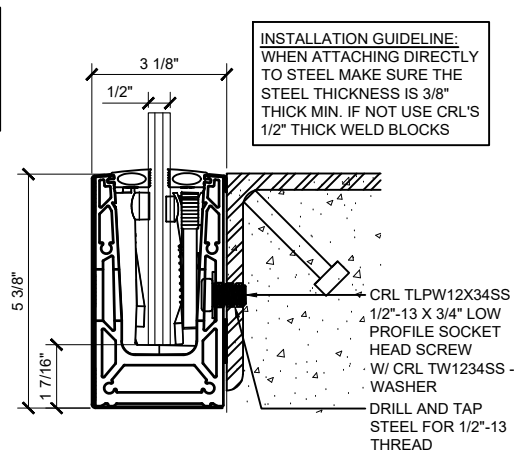
**FASCIA MOUNT DETAIL
CONCRETE SUBSTRATE W/ DRAIN BLOCK**

6" AND 12" (305MM) O.C. SPACING IS STANDARD. ANCHOR SPACING WILL DEPEND ON MOUNTING SUBSTRATE AND REGION OF PROJECT



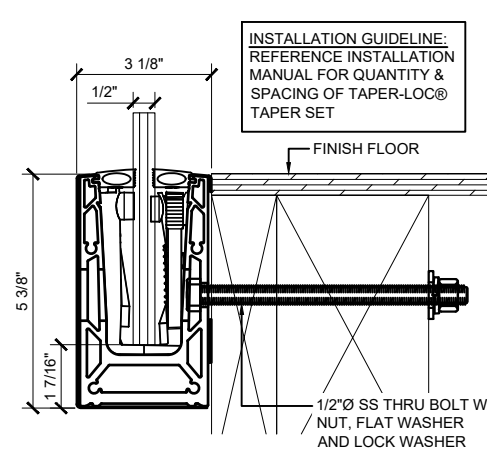
**FASCIA MOUNT DETAIL
STEEL SUBSTRATE**

6" AND 12" (305MM) O.C. SPACING IS STANDARD. ANCHOR SPACING WILL DEPEND ON MOUNTING SUBSTRATE AND REGION OF PROJECT



**FASCIA MOUNT DETAIL
STEEL SUBSTRATE**

6" AND 12" (305MM) O.C. SPACING IS STANDARD. ANCHOR SPACING WILL DEPEND ON MOUNTING SUBSTRATE AND REGION OF PROJECT



**FASCIA MOUNT DETAIL
WOOD SUBSTRATE**

6" AND 12" (305MM) O.C. SPACING IS STANDARD. ANCHOR SPACING WILL DEPEND ON MOUNTING SUBSTRATE AND REGION OF PROJECT

INSTALLATION GUIDELINE:
WHEN ATTACHING DIRECTLY TO STEEL MAKE SURE THE STEEL THICKNESS IS 3/8" THICK MIN. IF NOT USE CRL'S 1/2" THICK WELD BLOCKS

INSTALLATION GUIDELINE:
WHEN ATTACHING DIRECTLY TO STEEL MAKE SURE THE STEEL THICKNESS IS 3/8" THICK MIN. IF NOT USE CRL'S 1/2" THICK WELD BLOCKS

INSTALLATION GUIDELINE:
REFERENCE INSTALLATION MANUAL FOR QUANTITY & SPACING OF TAPER-LOC® TAPER SET

Revisions By:		
△	-	-
△	-	-
△	-	-
△	-	-

CRL

CRL LAURENCE CO. ARCHITECTURAL PRODUCTS
2500 E. Vermont Avenue, Los Angeles, CA 90058-1897
PH: (800)-421-6144 FX: (800)-987-7501 www.crlaurence.com

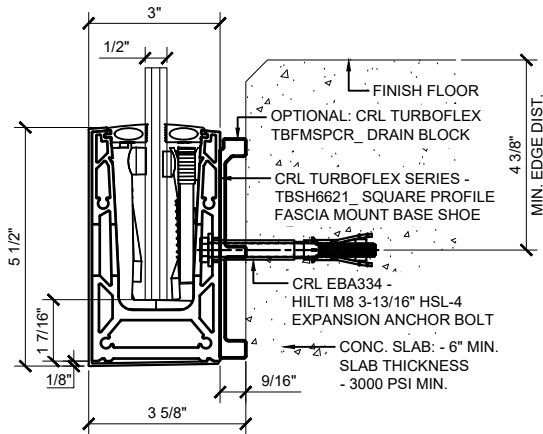
**TURBOFLEX
GLASS RAILING SYSTEM
FOR TEMPERED MONOLITHIC AND
LAMINATED GLASS**

**BASE SHOE OPTIONS
FASCIA MOUNT**

Drawn By: EDR
Date: 10/21/25
Scale: AS NOTED
File Name:
SYS0133A_TURBOFLEX_GRS.dwg

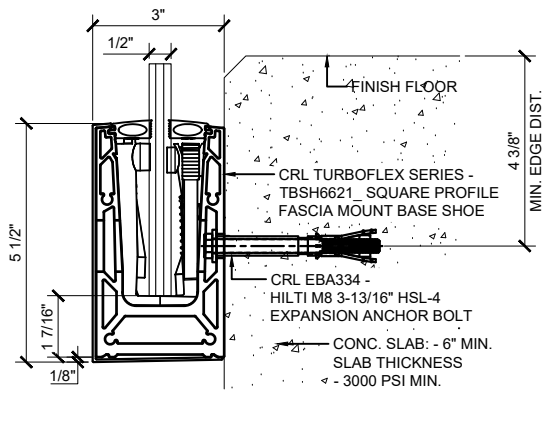
Sheet

TYPICAL TURBOFLEX SURFACE-MOUNT BASE SHOE ATTACHMENTS FOR 1/2" GLASS WITH SNAP-ON COVER.



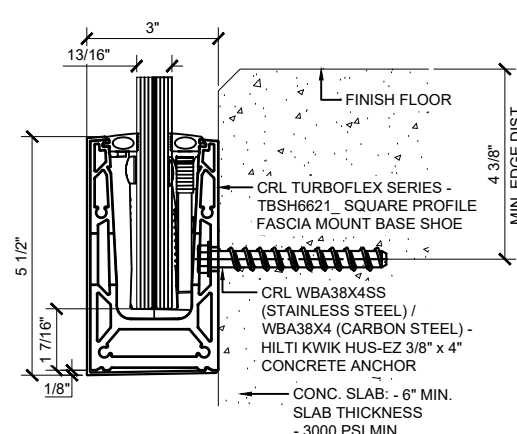
**FASCIA MOUNT DETAIL
CONCRETE SUBSTRATE**

6" AND 12" (305MM) O.C. SPACING IS STANDARD. ANCHOR SPACING WILL DEPEND ON MOUNTING SUBSTRATE AND REGION OF PROJECT



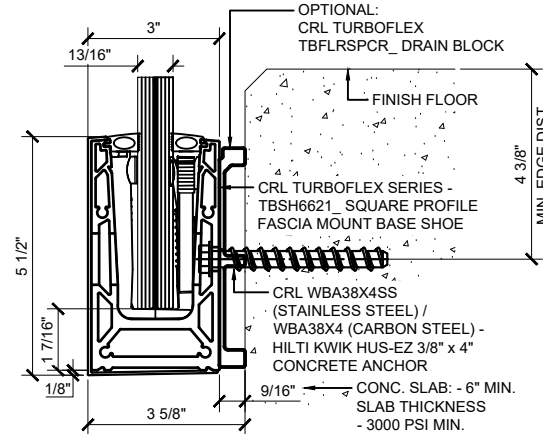
**FASCIA MOUNT DETAIL
CONCRETE SUBSTRATE**

6" AND 12" (305MM) O.C. SPACING IS STANDARD. ANCHOR SPACING WILL DEPEND ON MOUNTING SUBSTRATE AND REGION OF PROJECT



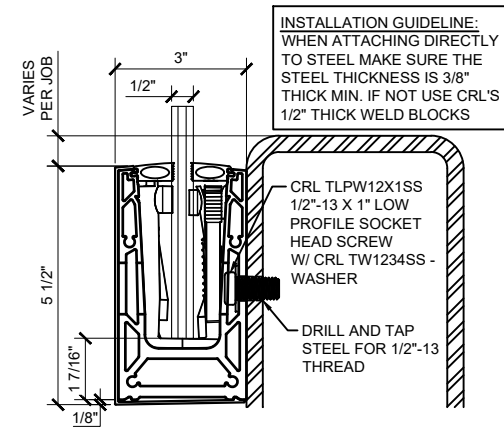
**FASCIA MOUNT DETAIL
CONCRETE SUBSTRATE**

6" AND 12" (305MM) O.C. SPACING IS STANDARD. ANCHOR SPACING WILL DEPEND ON MOUNTING SUBSTRATE AND REGION OF PROJECT



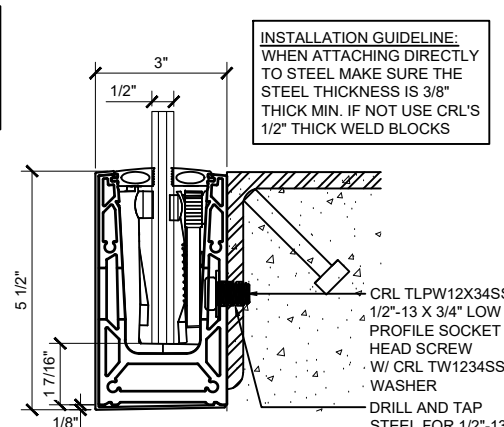
**FASCIA MOUNT DETAIL
CONCRETE SUBSTRATE W/ DRAIN BLOCK**

6" AND 12" (305MM) O.C. SPACING IS STANDARD. ANCHOR SPACING WILL DEPEND ON MOUNTING SUBSTRATE AND REGION OF PROJECT



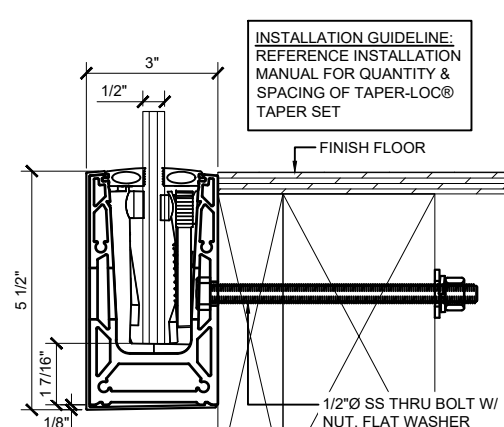
**FASCIA MOUNT DETAIL
STEEL SUBSTRATE**

6" AND 12" (305MM) O.C. SPACING IS STANDARD. ANCHOR SPACING WILL DEPEND ON MOUNTING SUBSTRATE AND REGION OF PROJECT



**FASCIA MOUNT DETAIL
STEEL SUBSTRATE**

6" AND 12" (305MM) O.C. SPACING IS STANDARD. ANCHOR SPACING WILL DEPEND ON MOUNTING SUBSTRATE AND REGION OF PROJECT



**FASCIA MOUNT DETAIL
WOOD SUBSTRATE**

6" AND 12" (305MM) O.C. SPACING IS STANDARD. ANCHOR SPACING WILL DEPEND ON MOUNTING SUBSTRATE AND REGION OF PROJECT

Revisions By:

△	-	-
△	-	-
△	-	-
△	-	-

CRL

C.R. LAURENCE CO. ARCHITECTURAL PRODUCTS
2500 E. Vermont Avenue, Los Angeles, CA 90058-1897
PH: (800)-421-6144 FX: (800)-987-7501 www.crlaurence.com

Description:
TURBOFLEX
GLASS RAILING SYSTEM
FOR TEMPERED MONOLITHIC AND
LAMINATED GLASS

BASE SHOE OPTIONS
FASCIA MOUNT

Drawn By: EDR

Date: 10/21/25

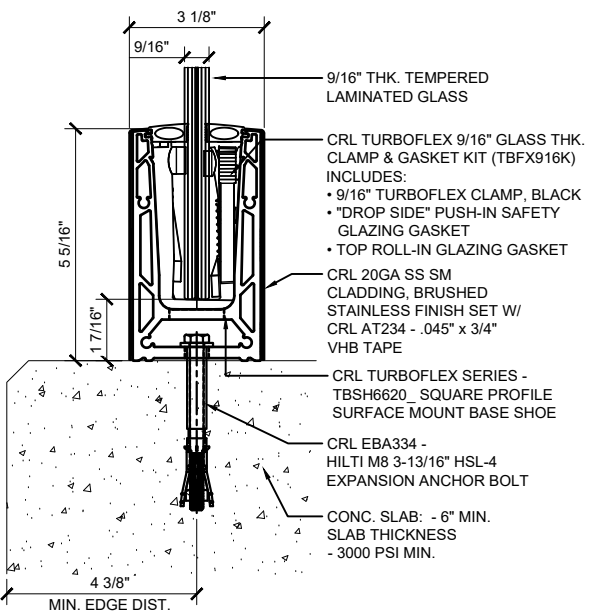
Scale: AS NOTED

File Name:

YS0133A_TURBOFLEX_GRS.dwg

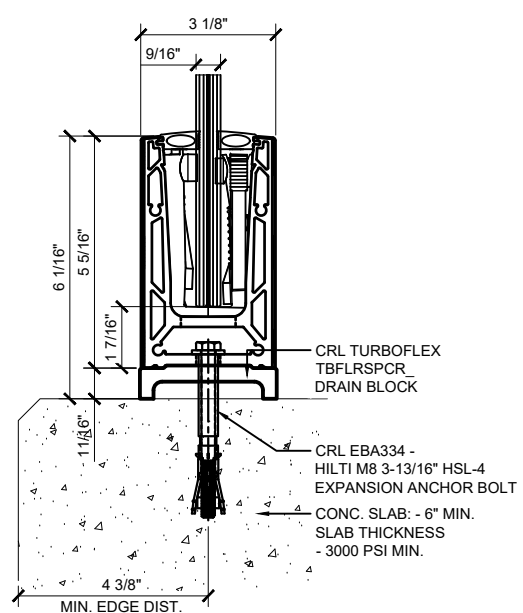
Sheet

TYPICAL TURBOFLEX SURFACE-MOUNT BASE SHOE ATTACHMENTS FOR 9/16" GLASS WITH STAINLESS STEEL CLADDING.



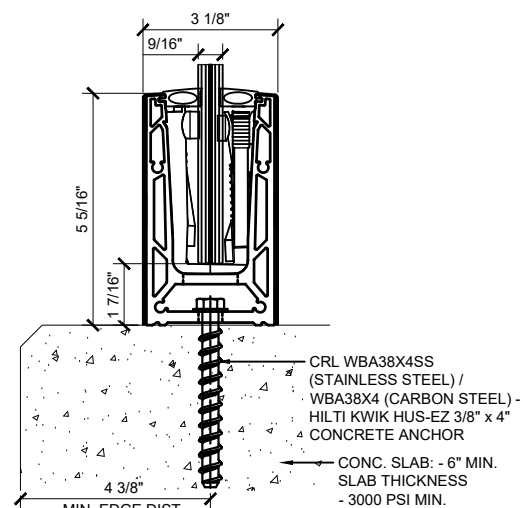
**SURFACE MOUNT DETAIL
CONCRETE SUBSTRATE**

6" AND 12" (305MM) O.C. SPACING IS STANDARD. ANCHOR SPACING WILL DEPEND ON MOUNTING SUBSTRATE AND REGION OF PROJECT



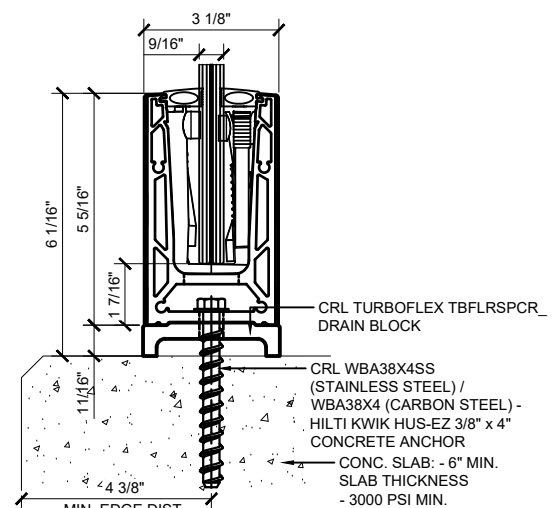
**SURFACE MOUNT DETAIL
CONCRETE SUBSTRATE W/ DRAIN BLOCK**

6" AND 12" (305MM) O.C. SPACING IS STANDARD. ANCHOR SPACING WILL DEPEND ON MOUNTING SUBSTRATE AND REGION OF PROJECT



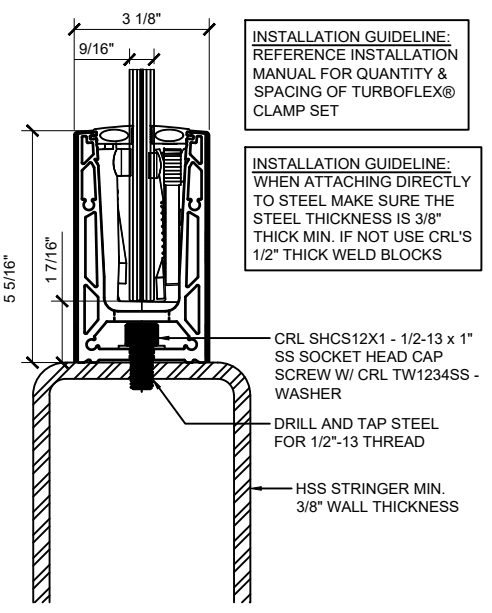
**SURFACE MOUNT DETAIL
CONCRETE SUBSTRATE**

6" AND 12" (305MM) O.C. SPACING IS STANDARD. ANCHOR SPACING WILL DEPEND ON MOUNTING SUBSTRATE AND REGION OF PROJECT



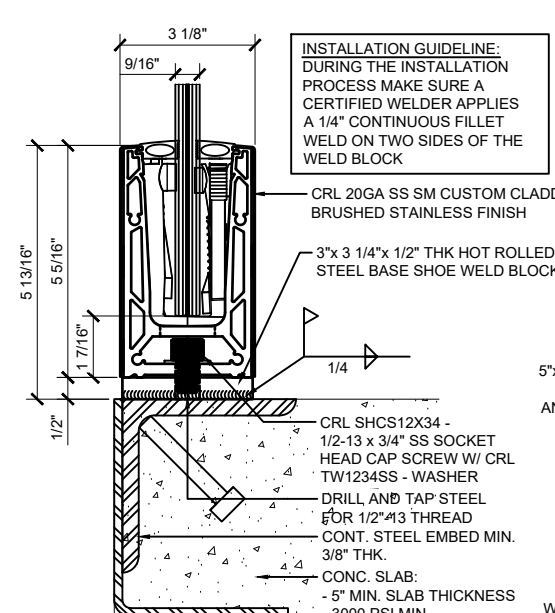
**SURFACE MOUNT DETAIL
CONCRETE SUBSTRATE W/ DRAIN BLOCK**

6" AND 12" (305MM) O.C. SPACING IS STANDARD. ANCHOR SPACING WILL DEPEND ON MOUNTING SUBSTRATE AND REGION OF PROJECT



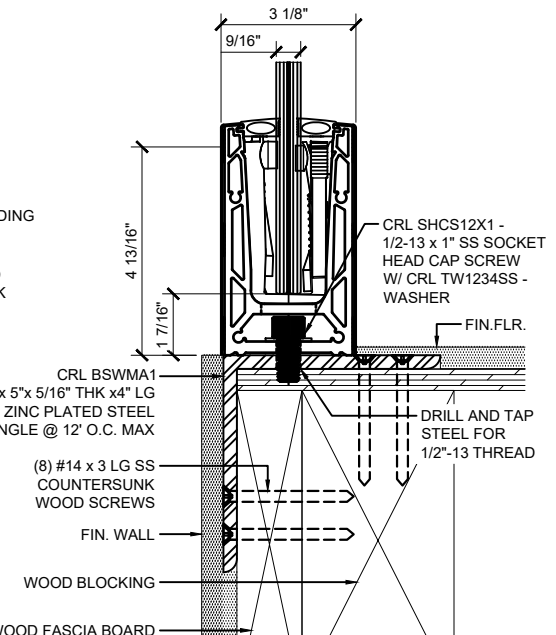
**SURFACE MOUNT DETAIL
STEEL SUBSTRATE**

6" AND 12" (305MM) O.C. SPACING IS STANDARD. ANCHOR SPACING WILL DEPEND ON MOUNTING SUBSTRATE AND REGION OF PROJECT



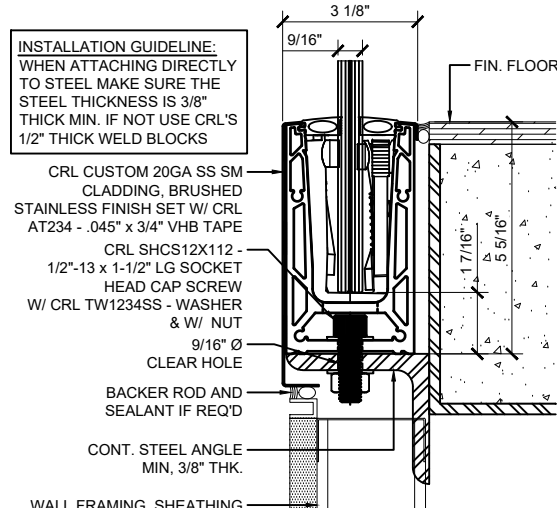
**SURFACE MOUNT DETAIL
STEEL SUBSTRATE W/ WELD BLOCK**

6" AND 12" (305MM) O.C. SPACING IS STANDARD. ANCHOR SPACING WILL DEPEND ON MOUNTING SUBSTRATE AND REGION OF PROJECT



**SURFACE MOUNT DETAIL
WOOD SUBSTRATE**

6" AND 12" (305MM) O.C. SPACING IS STANDARD. ANCHOR SPACING WILL DEPEND ON MOUNTING SUBSTRATE AND REGION OF PROJECT



**SURFACE MOUNT DETAIL
STEEL SUBSTRATE W/ CUSTOM CLADDING**

6" AND 12" (305MM) O.C. SPACING IS STANDARD. ANCHOR SPACING WILL DEPEND ON MOUNTING SUBSTRATE AND REGION OF PROJECT

INSTALLATION GUIDELINE:
REFERENCE INSTALLATION
MANUAL FOR QUANTITY &
SPACING OF TURBOFLEX®
CLAMP SET

INSTALLATION GUIDELINE:
WHEN ATTACHING DIRECTLY
TO STEEL MAKE SURE THE
STEEL THICKNESS IS 3/8"
THICK MIN. IF NOT USE CRL'S
1/2" THICK WELD BLOCKS

INSTALLATION GUIDELINE:
DURING THE INSTALLATION
PROCESS MAKE SURE A
CERTIFIED WELDER APPLIES
A 1/4" CONTINUOUS FILLET
WELD ON TWO SIDES OF THE
WELD BLOCK

INSTALLATION GUIDELINE:
WHEN ATTACHING DIRECTLY
TO STEEL MAKE SURE THE
STEEL THICKNESS IS 3/8"
THICK MIN. IF NOT USE CRL'S
1/2" THICK WELD BLOCKS

Revisions By:		
△	-	-
△	-	-
△	-	-
△	-	-

CRL

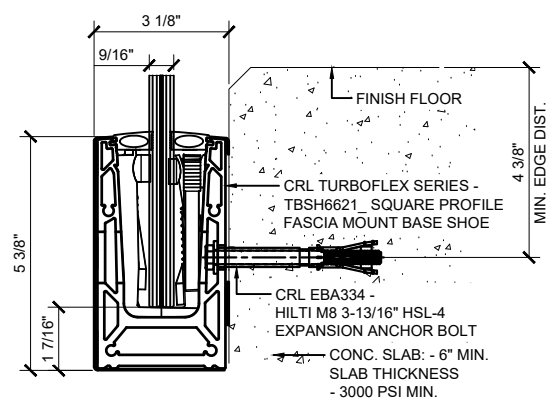
C.R. LAURENCE CO. ARCHITECTURAL PRODUCTS
2500 E. Vermont Avenue, Los Angeles, CA 90058-1897
PH (800)-421-6144 FX (800)-987-7501 www.crlaurence.com

TURBOFLEX
GLASS RAILING SYSTEM
FOR TEMPERED MONOLITHIC AND
LAMINATED GLASS

BASE SHOE OPTIONS
SURFACE MOUNT

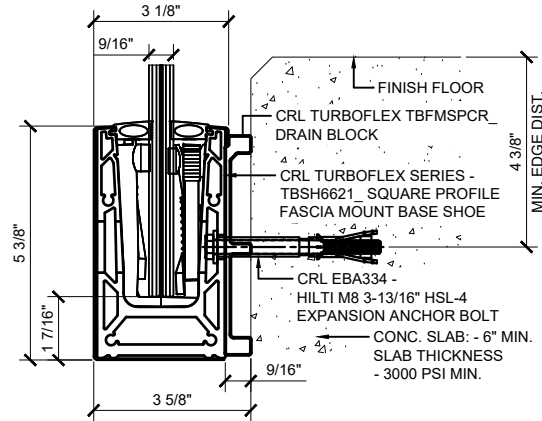
Drawn By: EDR
Date: 10/21/25
Scale: AS NOTED
File Name:
SYS0133A_TURBOFLEX_GRS.dwg

TYPICAL TURBOFLEX FASCIA-MOUNT BASE SHOE ATTACHMENTS FOR 9/16" GLASS WITH STAINLESS STEEL CLADDING.



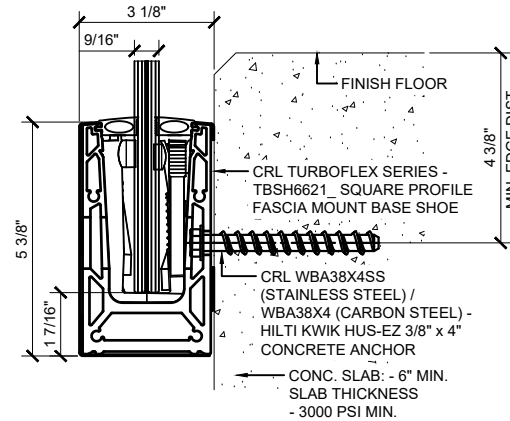
**FASCIA MOUNT DETAIL
CONCRETE SUBSTRATE**

6" AND 12" (305MM) O.C. SPACING IS STANDARD. ANCHOR SPACING WILL DEPEND ON MOUNTING SUBSTRATE AND REGION OF PROJECT



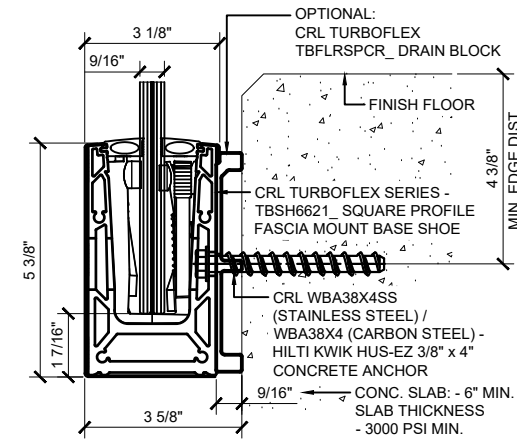
**FASCIA MOUNT DETAIL CONCRETE
SUBSTRATE W/ DRAIN BLOCK**

6" AND 12" (305MM) O.C. SPACING IS STANDARD. ANCHOR SPACING WILL DEPEND ON MOUNTING SUBSTRATE AND REGION OF PROJECT



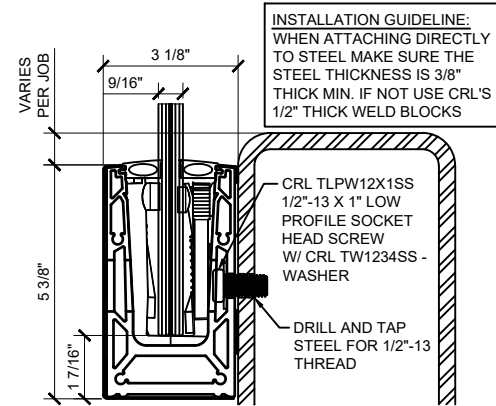
**FASCIA MOUNT DETAIL
CONCRETE SUBSTRATE**

6" AND 12" (305MM) O.C. SPACING IS STANDARD. ANCHOR SPACING WILL DEPEND ON MOUNTING SUBSTRATE AND REGION OF PROJECT



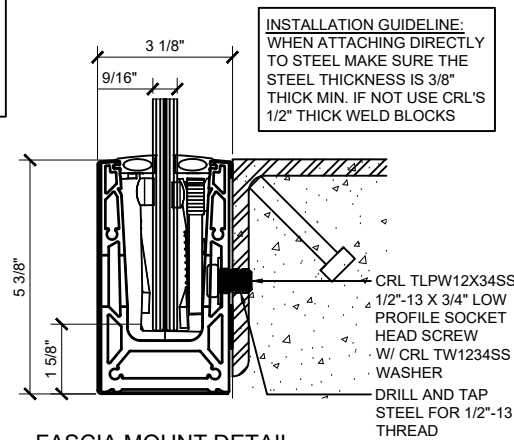
**FASCIA MOUNT DETAIL
CONCRETE SUBSTRATE W/ DRAIN BLOCK**

6" AND 12" (305MM) O.C. SPACING IS STANDARD. ANCHOR SPACING WILL DEPEND ON MOUNTING SUBSTRATE AND REGION OF PROJECT



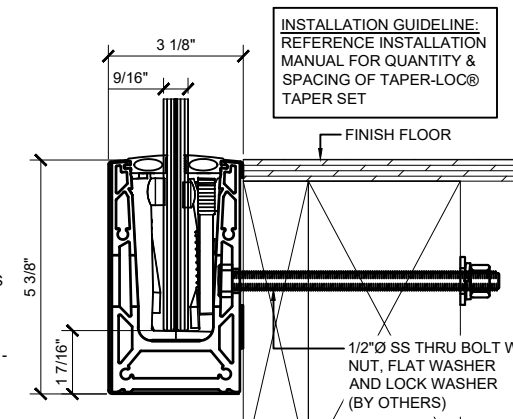
**FASCIA MOUNT DETAIL
STEEL SUBSTRATE**

6" AND 12" (305MM) O.C. SPACING IS STANDARD. ANCHOR SPACING WILL DEPEND ON MOUNTING SUBSTRATE AND REGION OF PROJECT



**FASCIA MOUNT DETAIL
STEEL SUBSTRATE**

6" AND 12" (305MM) O.C. SPACING IS STANDARD. ANCHOR SPACING WILL DEPEND ON MOUNTING SUBSTRATE AND REGION OF PROJECT



**FASCIA MOUNT DETAIL
WOOD SUBSTRATE**

6" AND 12" (305MM) O.C. SPACING IS STANDARD. ANCHOR SPACING WILL DEPEND ON MOUNTING SUBSTRATE AND REGION OF PROJECT

Revisions By:		
△	-	-
△	-	-
△	-	-
△	-	-

CRL

C.R. LAURENCE CO. ARCHITECTURAL PRODUCTS
2500 E. Vermont Avenue, Los Angeles, CA 90058-1897
PH: (800)-421-6144 FX: (800)-987-7301 www.crlaurence.com

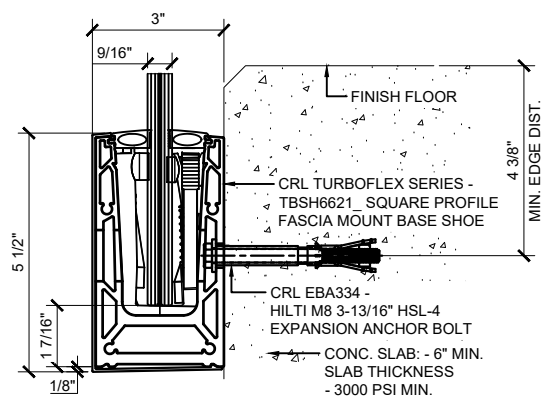
**TURBOFLEX
GLASS RAILING SYSTEM
FOR TEMPERED MONOLITHIC AND
LAMINATED GLASS**

**BASE SHOE OPTIONS
FASCIA MOUNT**

Drawn By: EDR
Date: 10/21/25
Scale: AS NOTED
File Name:
SYS0133A_TURBOFLEX_GRS.dwg

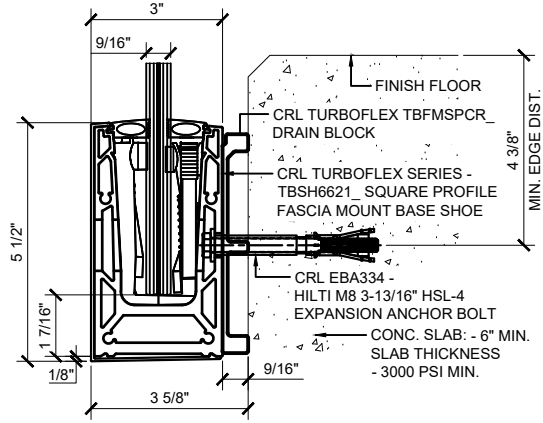
Sheet

TYPICAL TURBOFLEX SURFACE-MOUNT BASE SHOE ATTACHMENTS FOR 9/16" GLASS WITH SNAP-ON COVER.



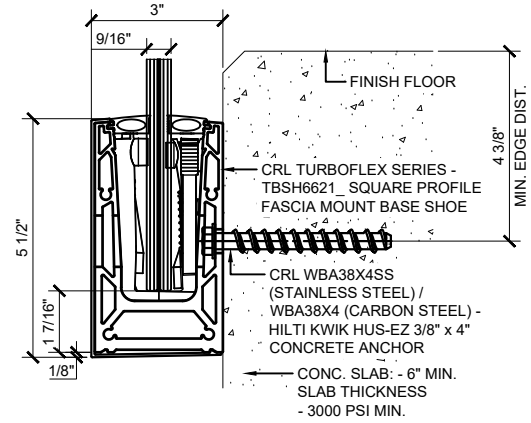
**FASCIA MOUNT DETAIL
CONCRETE SUBSTRATE**

6" AND 12" (305MM) O.C. SPACING IS STANDARD. ANCHOR SPACING WILL DEPEND ON MOUNTING SUBSTRATE AND REGION OF PROJECT



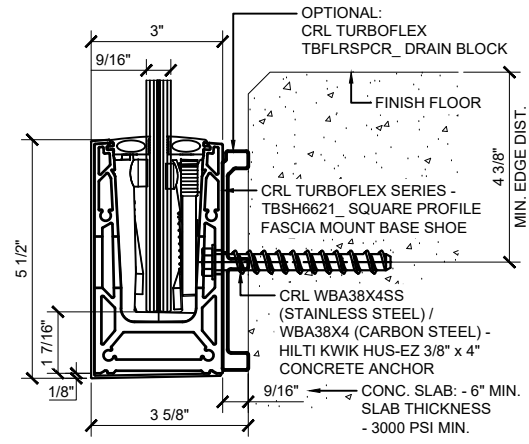
**FASCIA MOUNT DETAIL CONCRETE
SUBSTRATE W/ DRAIN BLOCK**

6" AND 12" (305MM) O.C. SPACING IS STANDARD. ANCHOR SPACING WILL DEPEND ON MOUNTING SUBSTRATE AND REGION OF PROJECT



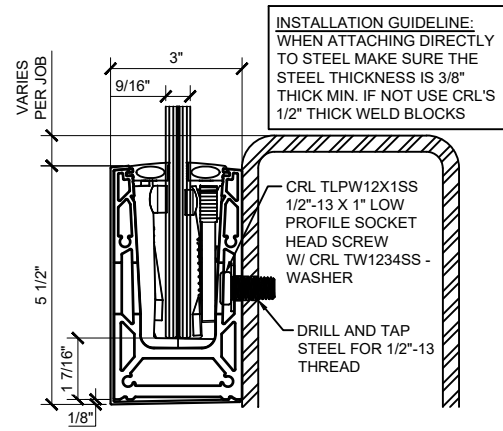
**FASCIA MOUNT DETAIL
CONCRETE SUBSTRATE**

6" AND 12" (305MM) O.C. SPACING IS STANDARD. ANCHOR SPACING WILL DEPEND ON MOUNTING SUBSTRATE AND REGION OF PROJECT



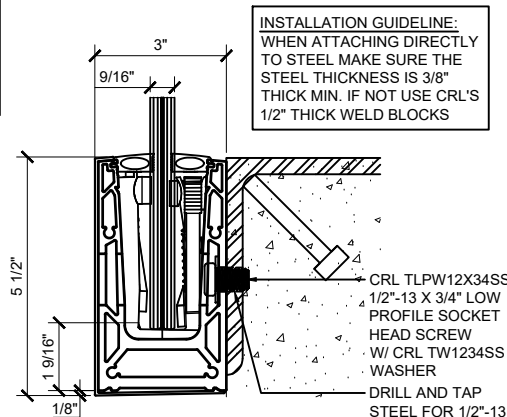
**FASCIA MOUNT DETAIL
CONCRETE SUBSTRATE W/ DRAIN BLOCK**

6" AND 12" (305MM) O.C. SPACING IS STANDARD. ANCHOR SPACING WILL DEPEND ON MOUNTING SUBSTRATE AND REGION OF PROJECT



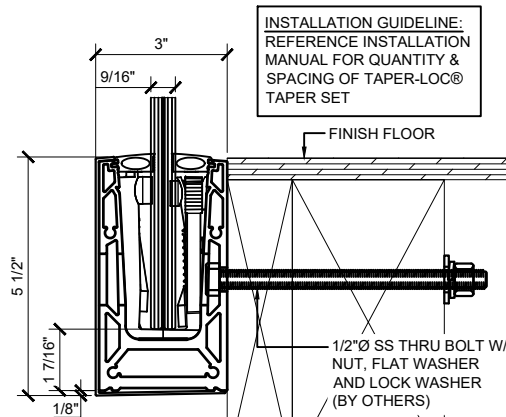
**FASCIA MOUNT DETAIL
STEEL SUBSTRATE**

6" AND 12" (305MM) O.C. SPACING IS STANDARD. ANCHOR SPACING WILL DEPEND ON MOUNTING SUBSTRATE AND REGION OF PROJECT



**FASCIA MOUNT DETAIL
STEEL SUBSTRATE**

6" AND 12" (305MM) O.C. SPACING IS STANDARD. ANCHOR SPACING WILL DEPEND ON MOUNTING SUBSTRATE AND REGION OF PROJECT



**FASCIA MOUNT DETAIL
WOOD SUBSTRATE**

6" AND 12" (305MM) O.C. SPACING IS STANDARD. ANCHOR SPACING WILL DEPEND ON MOUNTING SUBSTRATE AND REGION OF PROJECT

Revisions By:		
△	-	-
△	-	-
△	-	-
△	-	-

CRL

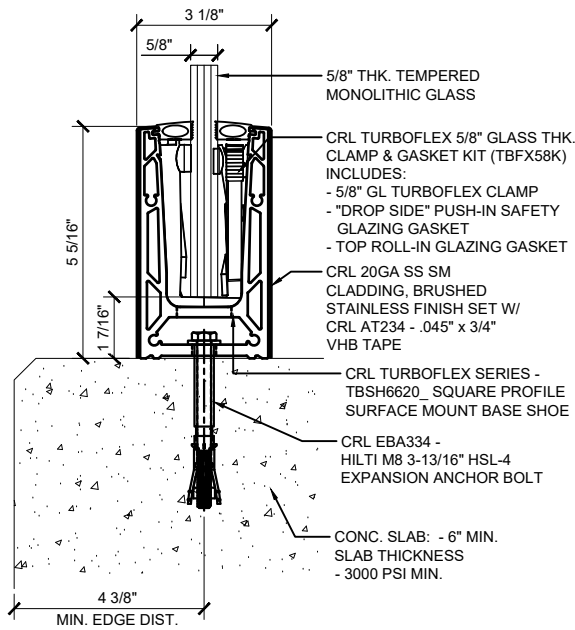
C.R. LAURENCE CO. ARCHITECTURAL PRODUCTS
2500 E. Vermont Avenue, Los Angeles, CA 90058-1897
PH: (800)-421-6144 FX: (800)-987-7301 www.crlaurence.com

**TURBOFLEX
GLASS RAILING SYSTEM
FOR TEMPERED MONOLITHIC AND
LAMINATED GLASS**

**BASE SHOE OPTIONS
FASCIA MOUNT**

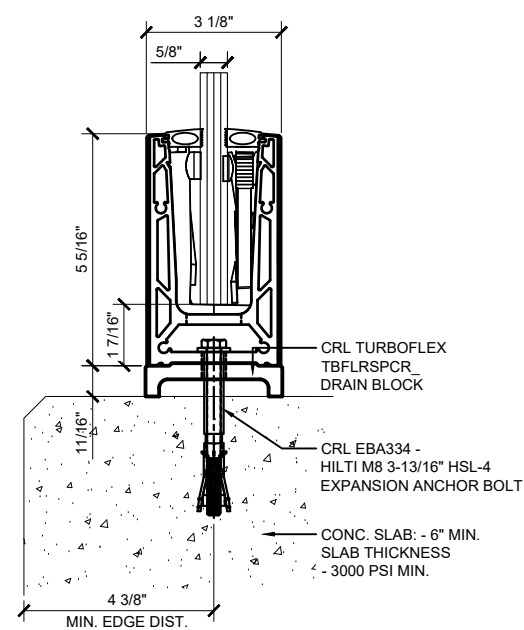
Drawn By: EDR
Date: 10/21/25
Scale: AS NOTED
File Name:
SYS0133A_TURBOFLEX_GRS.dwg

TYPICAL TURBOFLEX SURFACE-MOUNT BASE SHOE ATTACHMENTS FOR 5/8" GLASS WITH STAINLESS STEEL CLADDING.



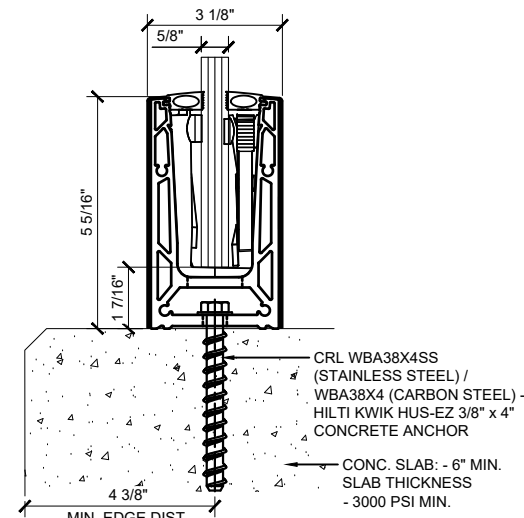
**SURFACE MOUNT DETAIL
CONCRETE SUBSTRATE**

6" AND 12" (305MM) O.C. SPACING IS STANDARD. ANCHOR SPACING WILL DEPEND ON MOUNTING SUBSTRATE AND REGION OF PROJECT



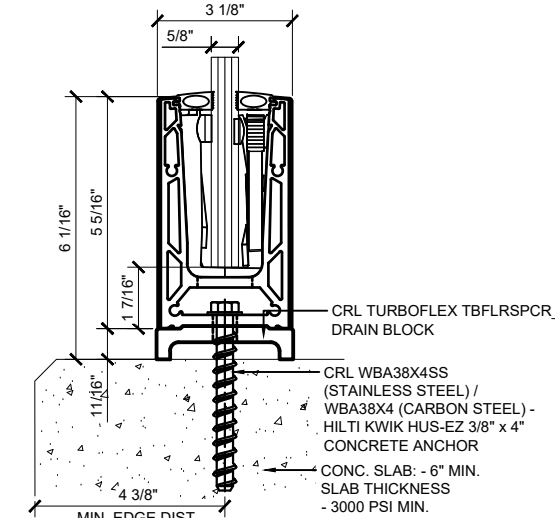
**SURFACE MOUNT DETAIL
CONCRETE SUBSTRATE W/ DRAIN BLOCK**

6" AND 12" (305MM) O.C. SPACING IS STANDARD. ANCHOR SPACING WILL DEPEND ON MOUNTING SUBSTRATE AND REGION OF PROJECT



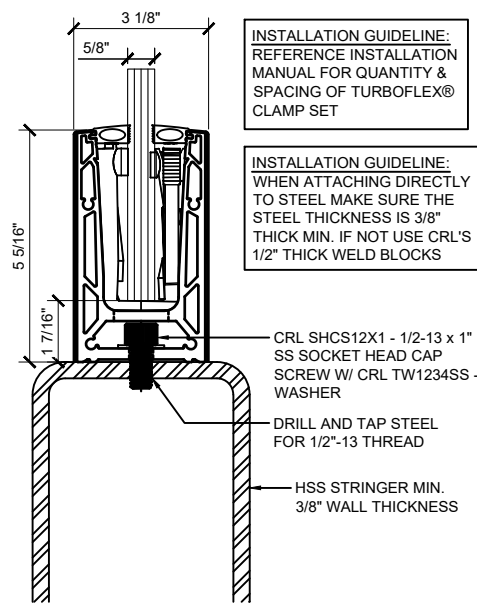
**SURFACE MOUNT DETAIL
CONCRETE SUBSTRATE**

6" AND 12" (305MM) O.C. SPACING IS STANDARD. ANCHOR SPACING WILL DEPEND ON MOUNTING SUBSTRATE AND REGION OF PROJECT



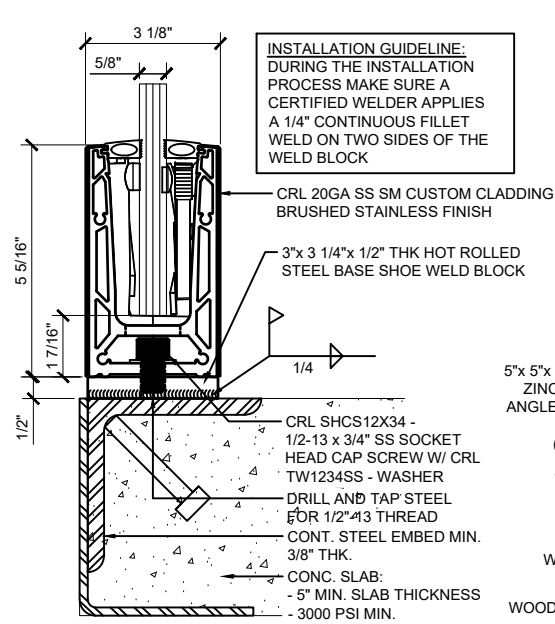
**SURFACE MOUNT DETAIL
CONCRETE SUBSTRATE W/ DRAIN BLOCK**

6" AND 12" (305MM) O.C. SPACING IS STANDARD. ANCHOR SPACING WILL DEPEND ON MOUNTING SUBSTRATE AND REGION OF PROJECT



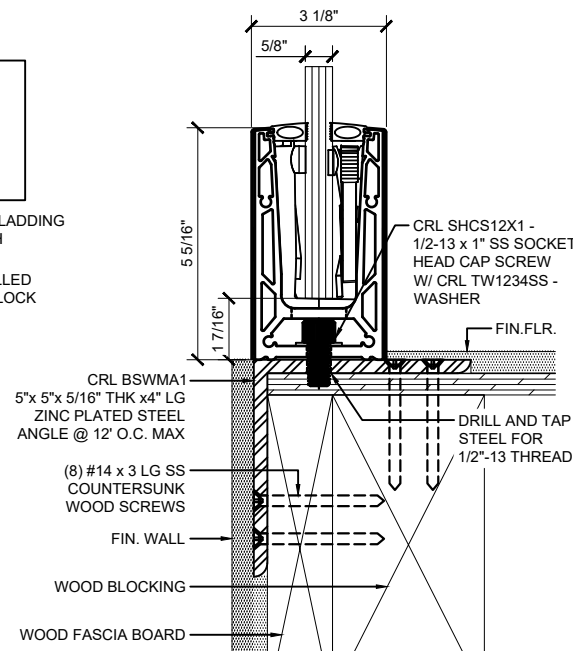
**SURFACE MOUNT DETAIL
STEEL SUBSTRATE**

6" AND 12" (305MM) O.C. SPACING IS STANDARD. ANCHOR SPACING WILL DEPEND ON MOUNTING SUBSTRATE AND REGION OF PROJECT



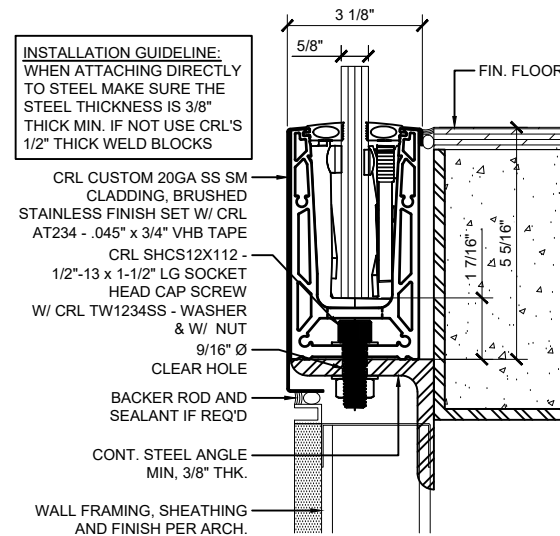
**SURFACE MOUNT DETAIL
STEEL SUBSTRATE W/ WELD BLOCK**

6" AND 12" (305MM) O.C. SPACING IS STANDARD. ANCHOR SPACING WILL DEPEND ON MOUNTING SUBSTRATE AND REGION OF PROJECT



**SURFACE MOUNT DETAIL
WOOD SUBSTRATE**

6" AND 12" (305MM) O.C. SPACING IS STANDARD. ANCHOR SPACING WILL DEPEND ON MOUNTING SUBSTRATE AND REGION OF PROJECT



**SURFACE MOUNT DETAIL
STEEL SUBSTRATE W/ CUSTOM CLADDING**

6" AND 12" (305MM) O.C. SPACING IS STANDARD. ANCHOR SPACING WILL DEPEND ON MOUNTING SUBSTRATE AND REGION OF PROJECT

Revisions By:

△	-	-
△	-	-
△	-	-
△	-	-
△	-	-

CRL

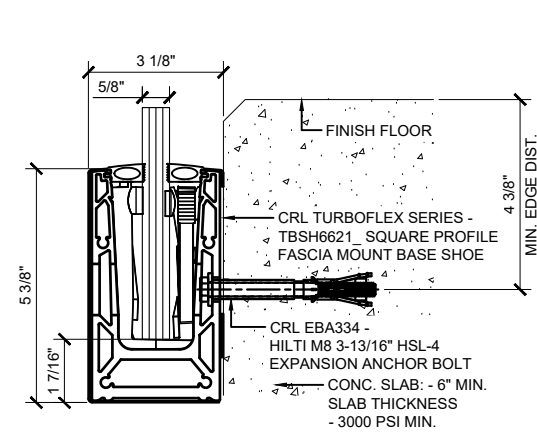
CRL LAURENCE CO. ARCHITECTURAL PRODUCTS
2500 E. Vernon Avenue, Los Angeles, CA 90058-1897
PH (800)-421-6144 FX (800)-987-7301 www.crlaurence.com

Description:
TURBOFLEX
GLASS RAILING SYSTEM
FOR TEMPERED MONOLITHIC AND
LAMINATED GLASS

BASE SHOE OPTIONS
SURFACE MOUNT

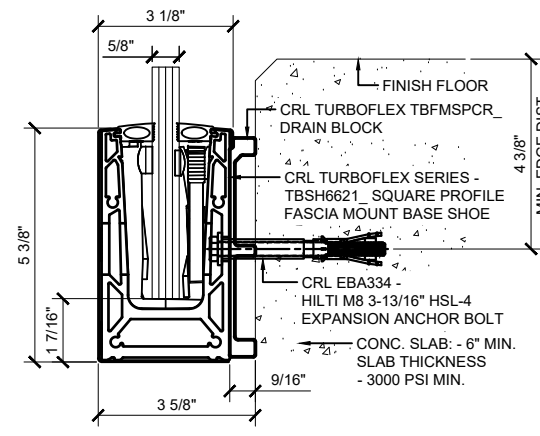
Drawn By: EDR
Date: 10/21/25
Scale: AS NOTED
File Name:
SYS0133A_TURBOFLEX_GRS.dwg

TYPICAL TURBOFLEX FASCIA-MOUNT BASE SHOE ATTACHMENTS FOR 5/8" GLASS WITH STAINLESS STEEL CLADDING.



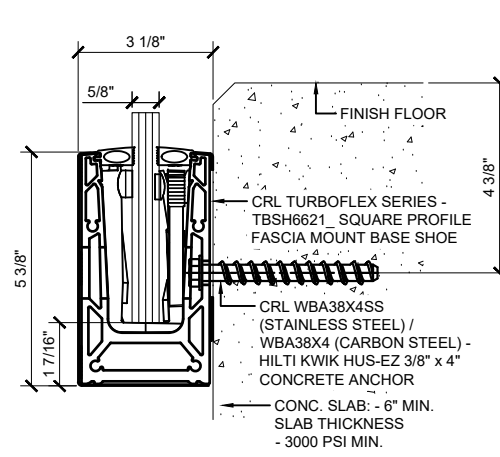
**FASCIA MOUNT DETAIL
CONCRETE SUBSTRATE**

6" AND 12" (305MM) O.C. SPACING IS STANDARD. ANCHOR SPACING WILL DEPEND ON MOUNTING SUBSTRATE AND REGION OF PROJECT



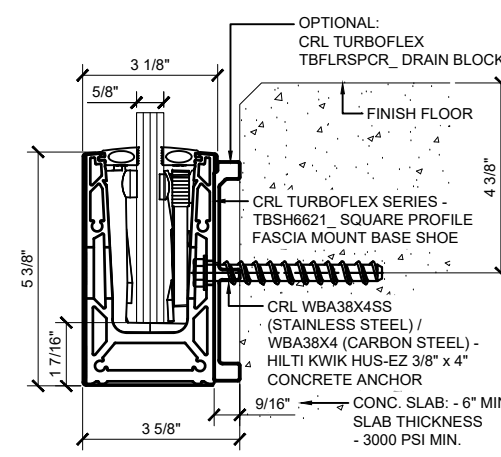
**FASCIA MOUNT DETAIL CONCRETE
SUBSTRATE W/ DRAIN BLOCK**

6" AND 12" (305MM) O.C. SPACING IS STANDARD. ANCHOR SPACING WILL DEPEND ON MOUNTING SUBSTRATE AND REGION OF PROJECT



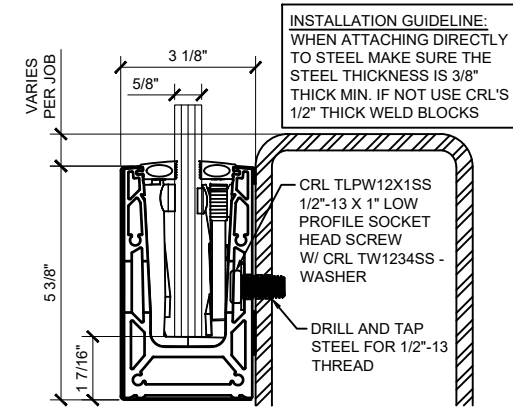
**FASCIA MOUNT DETAIL
CONCRETE SUBSTRATE**

6" AND 12" (305MM) O.C. SPACING IS STANDARD. ANCHOR SPACING WILL DEPEND ON MOUNTING SUBSTRATE AND REGION OF PROJECT



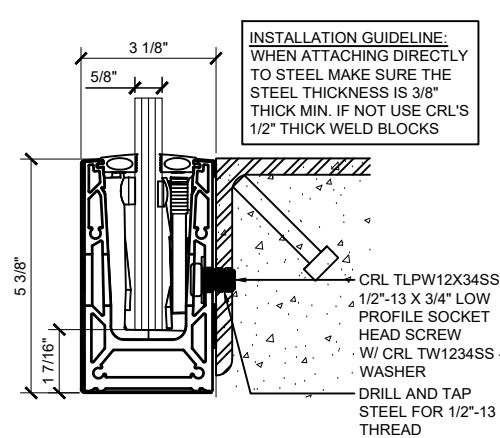
**FASCIA MOUNT DETAIL
CONCRETE SUBSTRATE W/ DRAIN BLOCK**

6" AND 12" (305MM) O.C. SPACING IS STANDARD. ANCHOR SPACING WILL DEPEND ON MOUNTING SUBSTRATE AND REGION OF PROJECT



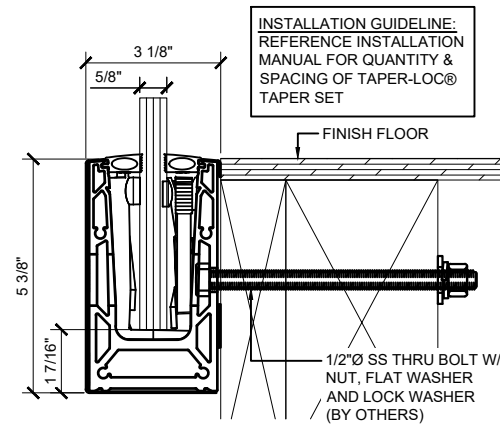
**FASCIA MOUNT DETAIL
STEEL SUBSTRATE**

6" AND 12" (305MM) O.C. SPACING IS STANDARD. ANCHOR SPACING WILL DEPEND ON MOUNTING SUBSTRATE AND REGION OF PROJECT



**FASCIA MOUNT DETAIL
STEEL SUBSTRATE**

6" AND 12" (305MM) O.C. SPACING IS STANDARD. ANCHOR SPACING WILL DEPEND ON MOUNTING SUBSTRATE AND REGION OF PROJECT



**FASCIA MOUNT DETAIL
WOOD SUBSTRATE**

6" AND 12" (305MM) O.C. SPACING IS STANDARD. ANCHOR SPACING WILL DEPEND ON MOUNTING SUBSTRATE AND REGION OF PROJECT

INSTALLATION GUIDELINE:
WHEN ATTACHING DIRECTLY TO STEEL MAKE SURE THE STEEL THICKNESS IS 3/8" THICK MIN. IF NOT USE CRL'S 1/2" THICK WELD BLOCKS

INSTALLATION GUIDELINE:
WHEN ATTACHING DIRECTLY TO STEEL MAKE SURE THE STEEL THICKNESS IS 3/8" THICK MIN. IF NOT USE CRL'S 1/2" THICK WELD BLOCKS

INSTALLATION GUIDELINE:
REFERENCE INSTALLATION MANUAL FOR QUANTITY & SPACING OF TAPER-LOC@ TAPER SET

Revisions By:			
△	-	-	-
△	-	-	-
△	-	-	-
△	-	-	-
△	-	-	-

CRL

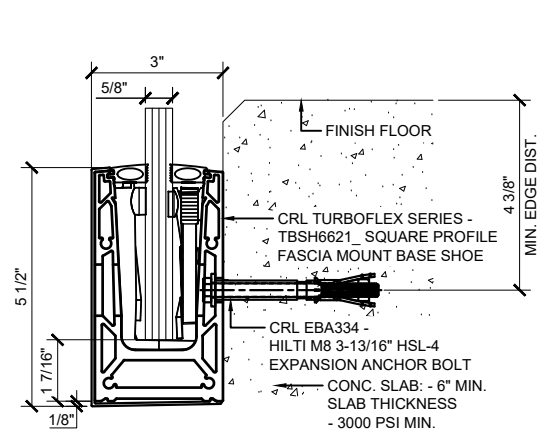
C.R. LAURENCE CO. ARCHITECTURAL PRODUCTS
2500 E. Vermont Avenue, Los Angeles, CA 90058-1897
PH: (800)-421-6144 FX: (800)-987-7301 www.crlaurence.com

**TURBOFLEX
GLASS RAILING SYSTEM
FOR TEMPERED MONOLITHIC AND
LAMINATED GLASS**

**BASE SHOE OPTIONS
FASCIA MOUNT**

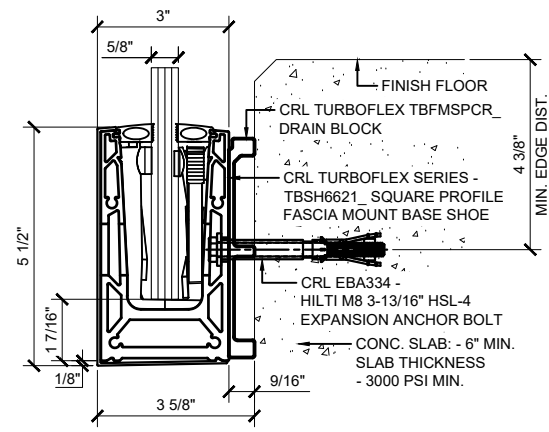
Drawn By: EDR
Date: 10/21/25
Scale: AS NOTED
File Name:
SYS0133A_TURBOFLEX_GRS.dwg

TYPICAL TURBOFLEX SURFACE-MOUNT BASE SHOE ATTACHMENTS FOR 5/8" GLASS WITH SNAP-ON COVER.



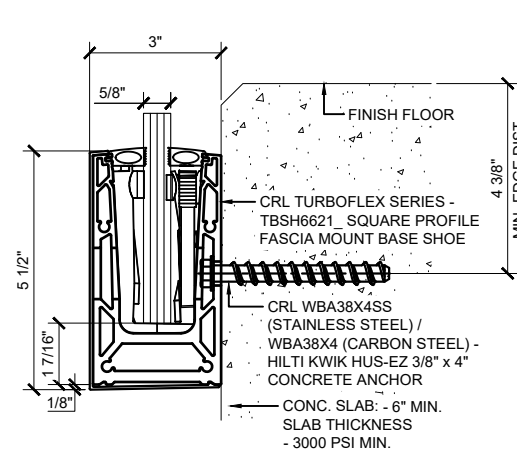
**FASCIA MOUNT DETAIL
CONCRETE SUBSTRATE**

6" AND 12" (305MM) O.C. SPACING IS STANDARD. ANCHOR SPACING WILL DEPEND ON MOUNTING SUBSTRATE AND REGION OF PROJECT



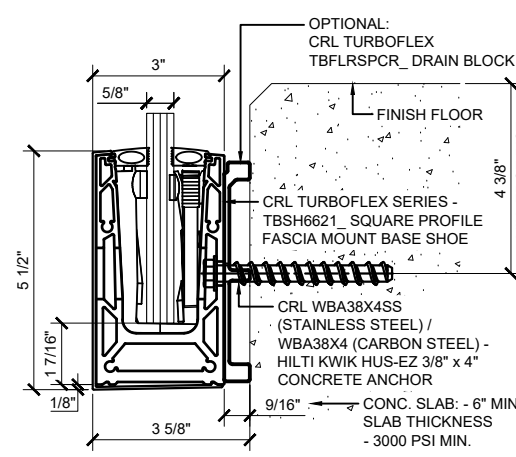
**FASCIA MOUNT DETAIL CONCRETE
SUBSTRATE W/ DRAIN BLOCK**

6" AND 12" (305MM) O.C. SPACING IS STANDARD. ANCHOR SPACING WILL DEPEND ON MOUNTING SUBSTRATE AND REGION OF PROJECT



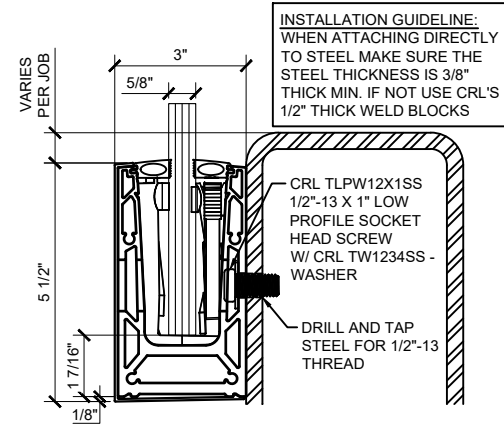
**FASCIA MOUNT DETAIL
CONCRETE SUBSTRATE**

6" AND 12" (305MM) O.C. SPACING IS STANDARD. ANCHOR SPACING WILL DEPEND ON MOUNTING SUBSTRATE AND REGION OF PROJECT



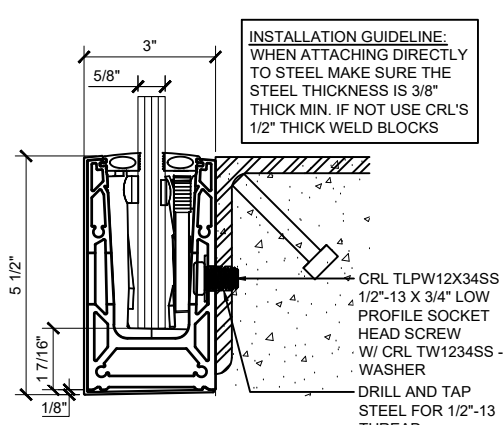
**FASCIA MOUNT DETAIL
CONCRETE SUBSTRATE W/ DRAIN BLOCK**

6" AND 12" (305MM) O.C. SPACING IS STANDARD. ANCHOR SPACING WILL DEPEND ON MOUNTING SUBSTRATE AND REGION OF PROJECT



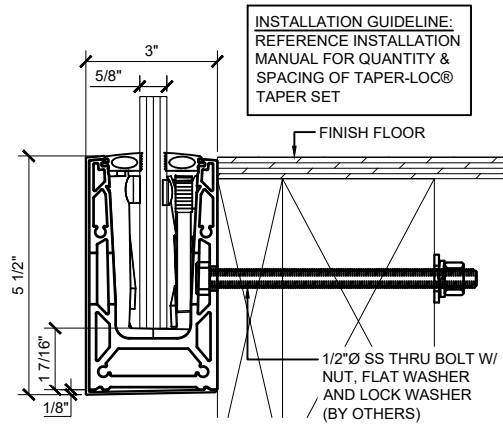
**FASCIA MOUNT DETAIL
STEEL SUBSTRATE**

6" AND 12" (305MM) O.C. SPACING IS STANDARD. ANCHOR SPACING WILL DEPEND ON MOUNTING SUBSTRATE AND REGION OF PROJECT



**FASCIA MOUNT DETAIL
STEEL SUBSTRATE**

6" AND 12" (305MM) O.C. SPACING IS STANDARD. ANCHOR SPACING WILL DEPEND ON MOUNTING SUBSTRATE AND REGION OF PROJECT



**FASCIA MOUNT DETAIL
WOOD SUBSTRATE**

6" AND 12" (305MM) O.C. SPACING IS STANDARD. ANCHOR SPACING WILL DEPEND ON MOUNTING SUBSTRATE AND REGION OF PROJECT

Revisions By:		
△	-	-
△	-	-
△	-	-
△	-	-

CRL

C.R.LAURENCE CO. ARCHITECTURAL PRODUCTS
2500 E. Vermont Avenue, Los Angeles, CA 90058-1897
PH (800)-421-6144 FX (800)-987-7301 www.crlaurence.com

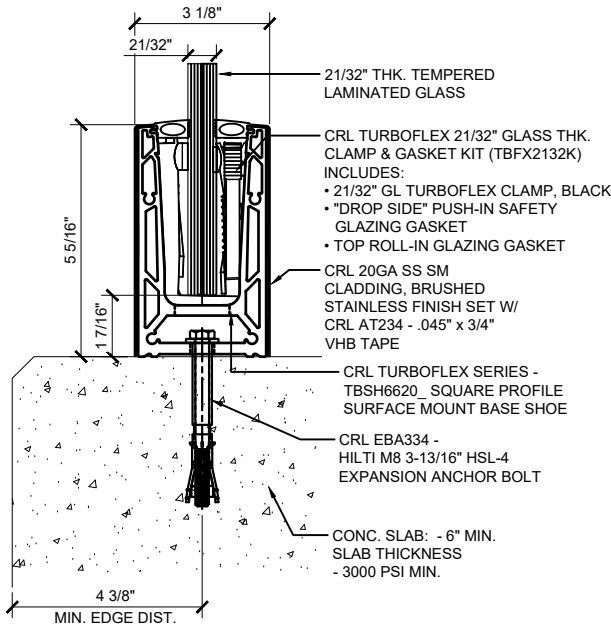
**TURBOFLEX
GLASS RAILING SYSTEM
FOR TEMPERED MONOLITHIC AND
LAMINATED GLASS**

**BASE SHOE OPTIONS
FASCIA MOUNT**

Drawn By: EDR
Date: 10/21/25
Scale: AS NOTED
File Name:
SYS0133A_TURBOFLEX_GRS.dwg

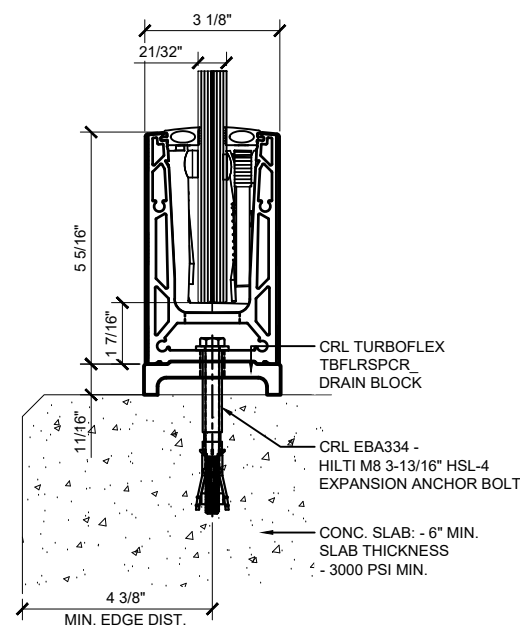
Sheet

TYPICAL TURBOFLEX SURFACE-MOUNT BASE SHOE ATTACHMENTS FOR 21/32" GLASS WITH STAINLESS STEEL CLADDING.



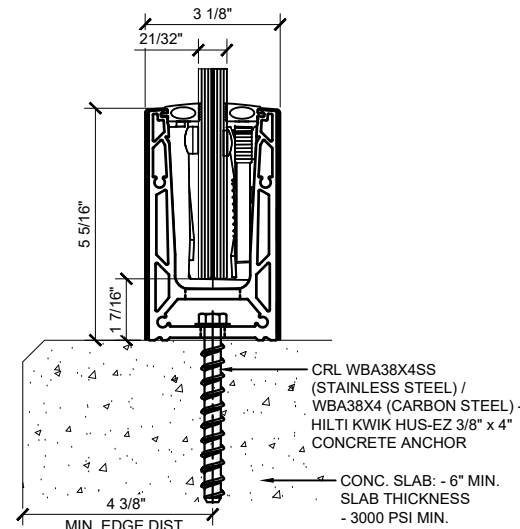
**SURFACE MOUNT DETAIL
CONCRETE SUBSTRATE**

6" AND 12" (305MM) O.C. SPACING IS STANDARD. ANCHOR SPACING WILL DEPEND ON MOUNTING SUBSTRATE AND REGION OF PROJECT



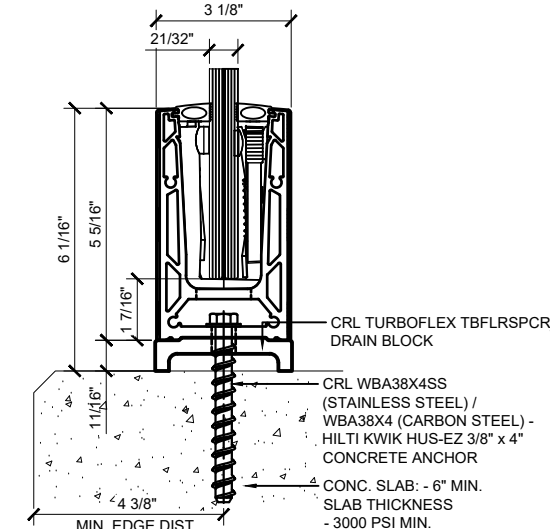
**SURFACE MOUNT DETAIL
CONCRETE SUBSTRATE W/ DRAIN BLOCK**

6" AND 12" (305MM) O.C. SPACING IS STANDARD. ANCHOR SPACING WILL DEPEND ON MOUNTING SUBSTRATE AND REGION OF PROJECT



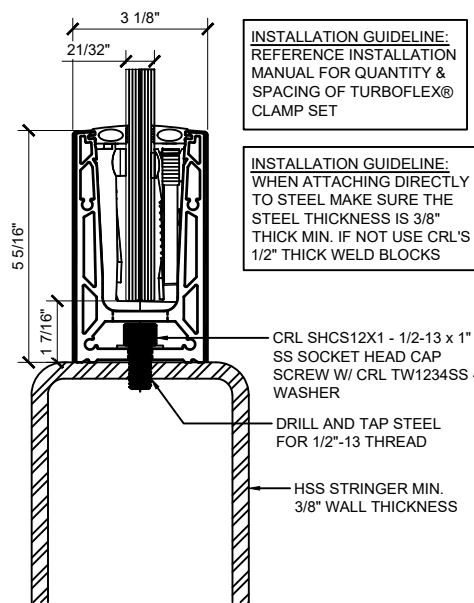
**SURFACE MOUNT DETAIL
CONCRETE SUBSTRATE**

6" AND 12" (305MM) O.C. SPACING IS STANDARD. ANCHOR SPACING WILL DEPEND ON MOUNTING SUBSTRATE AND REGION OF PROJECT



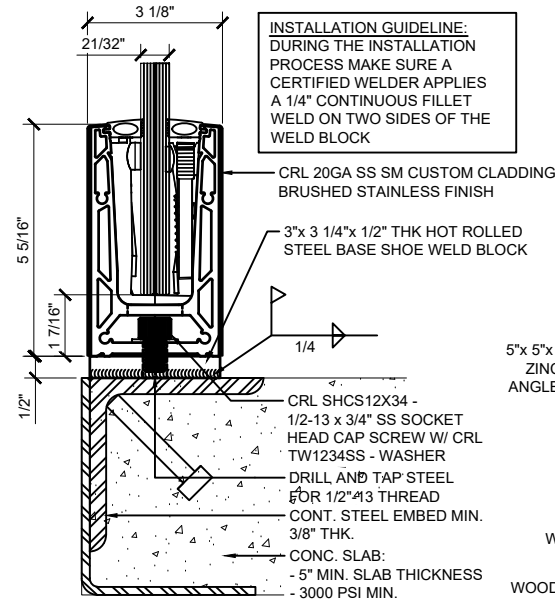
**SURFACE MOUNT DETAIL
CONCRETE SUBSTRATE W/ DRAIN BLOCK**

6" AND 12" (305MM) O.C. SPACING IS STANDARD. ANCHOR SPACING WILL DEPEND ON MOUNTING SUBSTRATE AND REGION OF PROJECT



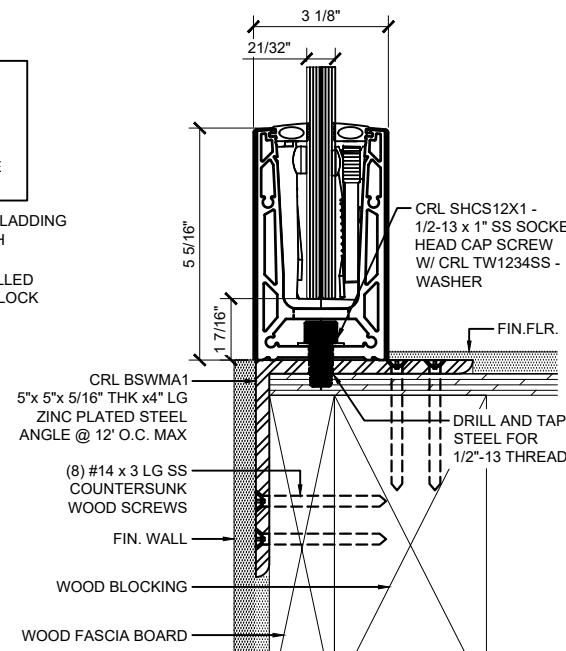
**SURFACE MOUNT DETAIL
STEEL SUBSTRATE**

6" AND 12" (305MM) O.C. SPACING IS STANDARD. ANCHOR SPACING WILL DEPEND ON MOUNTING SUBSTRATE AND REGION OF PROJECT



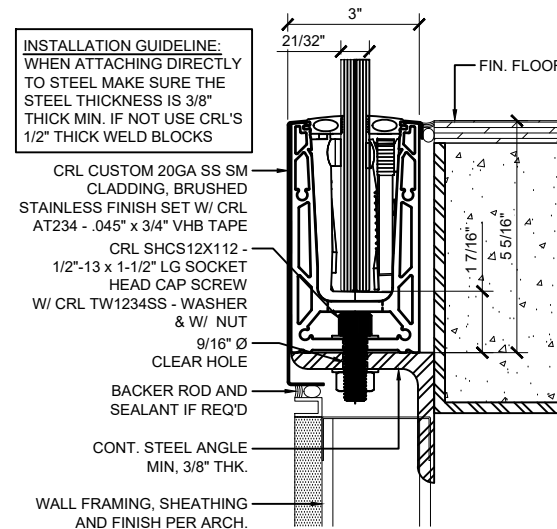
**SURFACE MOUNT DETAIL
STEEL SUBSTRATE W/ WELD BLOCK**

6" AND 12" (305MM) O.C. SPACING IS STANDARD. ANCHOR SPACING WILL DEPEND ON MOUNTING SUBSTRATE AND REGION OF PROJECT



**SURFACE MOUNT DETAIL
WOOD SUBSTRATE**

6" AND 12" (305MM) O.C. SPACING IS STANDARD. ANCHOR SPACING WILL DEPEND ON MOUNTING SUBSTRATE AND REGION OF PROJECT



**SURFACE MOUNT DETAIL
STEEL SUBSTRATE W/ CUSTOM CLADDING**

6" AND 12" (305MM) O.C. SPACING IS STANDARD. ANCHOR SPACING WILL DEPEND ON MOUNTING SUBSTRATE AND REGION OF PROJECT

INSTALLATION GUIDELINE:
REFERENCE INSTALLATION MANUAL FOR QUANTITY & SPACING OF TURBOFLEX® CLAMP SET

INSTALLATION GUIDELINE:
WHEN ATTACHING DIRECTLY TO STEEL MAKE SURE THE STEEL THICKNESS IS 3/8" THICK MIN. IF NOT USE CRL'S 1/2" THICK WELD BLOCKS

INSTALLATION GUIDELINE:
DURING THE INSTALLATION PROCESS MAKE SURE A CERTIFIED WELDER APPLIES A 1/4" CONTINUOUS FILLET WELD ON TWO SIDES OF THE WELD BLOCK

INSTALLATION GUIDELINE:
WHEN ATTACHING DIRECTLY TO STEEL MAKE SURE THE STEEL THICKNESS IS 3/8" THICK MIN. IF NOT USE CRL'S 1/2" THICK WELD BLOCKS

Revisions By:

△	-	-
△	-	-
△	-	-
△	-	-
△	-	-

CRL

C.R. LAURENCE CO. ARCHITECTURAL PRODUCTS
2500 E. Vermont Avenue, Los Angeles, CA 90058-1897
PH: (800)-421-6144 FX: (800)-987-7501 www.crlaurence.com

**TURBOFLEX
GLASS RAILING SYSTEM
FOR TEMPERED MONOLITHIC AND
LAMINATED GLASS**

**BASE SHOE OPTIONS
SURFACE MOUNT**

Drawn By: EDR

Date: 10/21/25

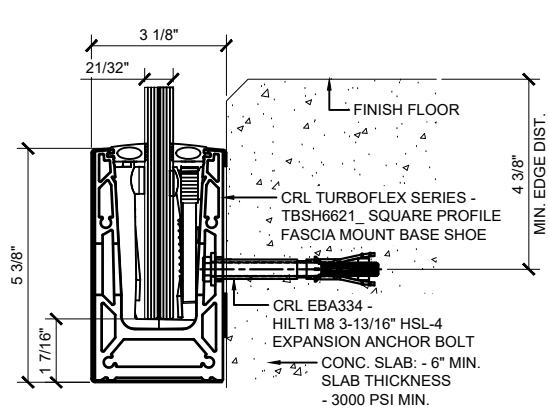
Scale: AS NOTED

File Name:

SY0133A_TURBOFLEX_GRS.dwg

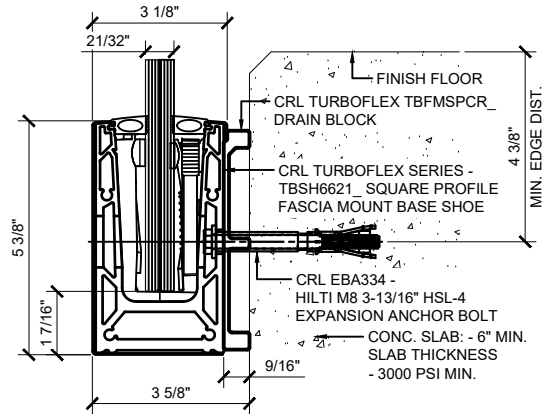
Sheet

TYPICAL TURBOFLEX FASCIA-MOUNT BASE SHOE ATTACHMENTS FOR 21/32" GLASS WITH STAINLESS STEEL CLADDING.



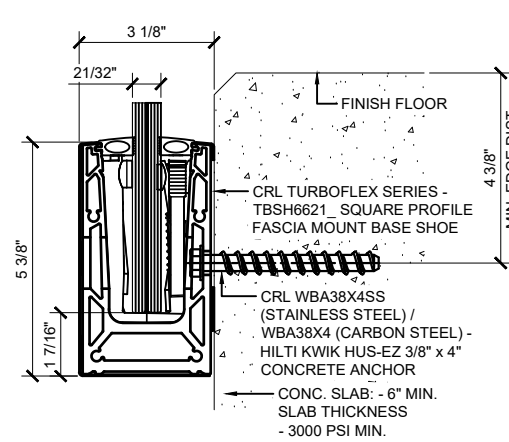
**FASCIA MOUNT DETAIL
CONCRETE SUBSTRATE**

6" AND 12" (305MM) O.C. SPACING IS STANDARD. ANCHOR SPACING WILL DEPEND ON MOUNTING SUBSTRATE AND REGION OF PROJECT



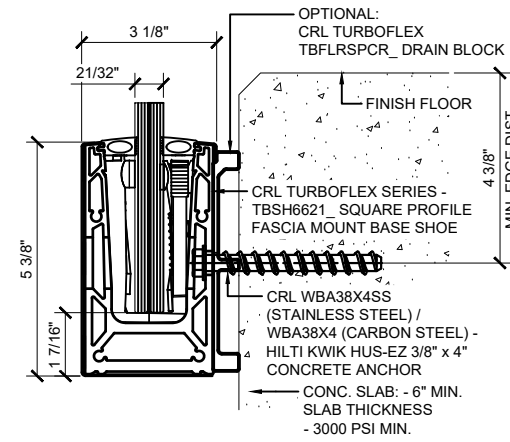
**FASCIA MOUNT DETAIL CONCRETE
SUBSTRATE W/ DRAIN BLOCK**

6" AND 12" (305MM) O.C. SPACING IS STANDARD. ANCHOR SPACING WILL DEPEND ON MOUNTING SUBSTRATE AND REGION OF PROJECT



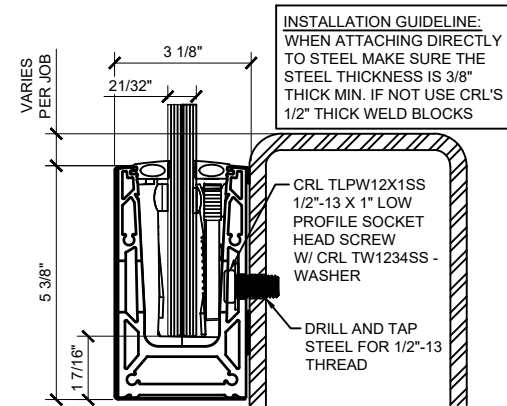
**FASCIA MOUNT DETAIL
CONCRETE SUBSTRATE**

6" AND 12" (305MM) O.C. SPACING IS STANDARD. ANCHOR SPACING WILL DEPEND ON MOUNTING SUBSTRATE AND REGION OF PROJECT



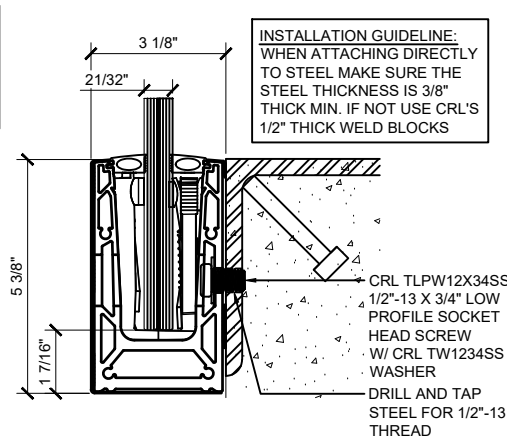
**FASCIA MOUNT DETAIL
CONCRETE SUBSTRATE W/ DRAIN BLOCK**

6" AND 12" (305MM) O.C. SPACING IS STANDARD. ANCHOR SPACING WILL DEPEND ON MOUNTING SUBSTRATE AND REGION OF PROJECT



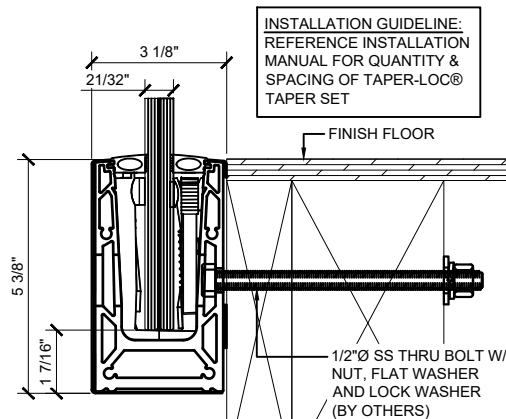
**FASCIA MOUNT DETAIL
STEEL SUBSTRATE**

6" AND 12" (305MM) O.C. SPACING IS STANDARD. ANCHOR SPACING WILL DEPEND ON MOUNTING SUBSTRATE AND REGION OF PROJECT



**FASCIA MOUNT DETAIL
STEEL SUBSTRATE**

6" AND 12" (305MM) O.C. SPACING IS STANDARD. ANCHOR SPACING WILL DEPEND ON MOUNTING SUBSTRATE AND REGION OF PROJECT



**FASCIA MOUNT DETAIL
WOOD SUBSTRATE**

6" AND 12" (305MM) O.C. SPACING IS STANDARD. ANCHOR SPACING WILL DEPEND ON MOUNTING SUBSTRATE AND REGION OF PROJECT

Revisions By:		
△	-	-
△	-	-
△	-	-
△	-	-

CRL

C.R. LAURENCE CO. ARCHITECTURAL PRODUCTS
2500 E. Vermont Avenue, Los Angeles, CA 90058-1897
PH (800)-421-6144 FX (800)-987-7301 www.crlaurence.com

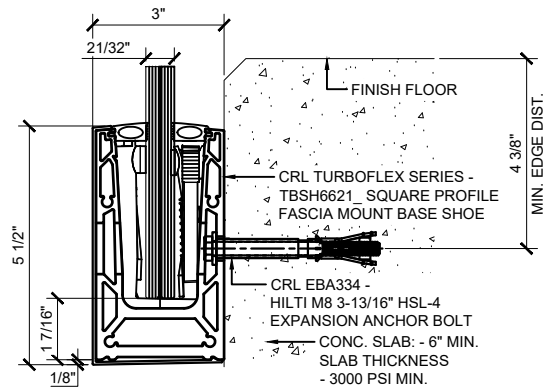
**TURBOFLEX
GLASS RAILING SYSTEM
FOR TEMPERED MONOLITHIC AND
LAMINATED GLASS**

**BASE SHOE OPTIONS
FASCIA MOUNT**

Drawn By: EDR
Date: 10/21/25
Scale: AS NOTED
File Name:
SYS0133A_TURBOFLEX_GRS.dwg

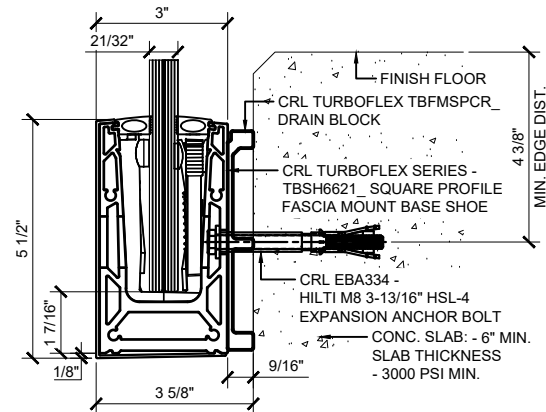
Sheet

TYPICAL TURBOFLEX SURFACE-MOUNT BASE SHOE ATTACHMENTS FOR 21/32" GLASS WITH SNAP-ON COVER.



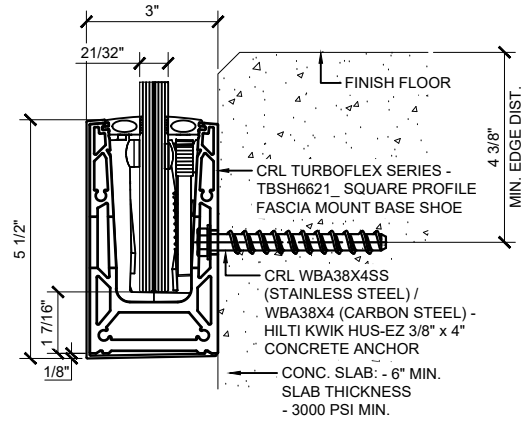
**FASCIA MOUNT DETAIL
CONCRETE SUBSTRATE**

6" AND 12" (305MM) O.C. SPACING IS STANDARD. ANCHOR SPACING WILL DEPEND ON MOUNTING SUBSTRATE AND REGION OF PROJECT



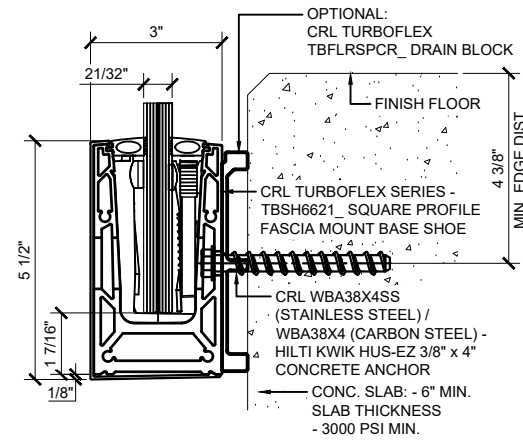
**FASCIA MOUNT DETAIL CONCRETE
SUBSTRATE W/ DRAIN BLOCK**

6" AND 12" (305MM) O.C. SPACING IS STANDARD. ANCHOR SPACING WILL DEPEND ON MOUNTING SUBSTRATE AND REGION OF PROJECT



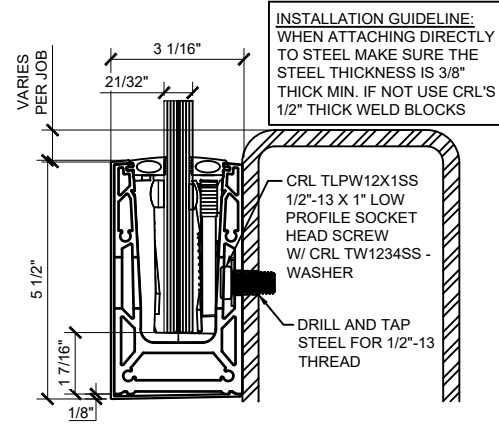
**FASCIA MOUNT DETAIL
CONCRETE SUBSTRATE**

6" AND 12" (305MM) O.C. SPACING IS STANDARD. ANCHOR SPACING WILL DEPEND ON MOUNTING SUBSTRATE AND REGION OF PROJECT



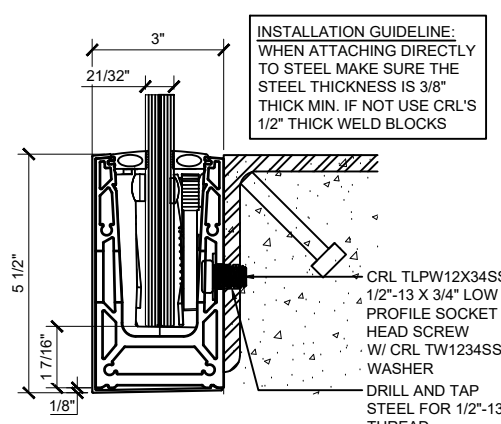
**FASCIA MOUNT DETAIL
CONCRETE SUBSTRATE W/ DRAIN BLOCK**

6" AND 12" (305MM) O.C. SPACING IS STANDARD. ANCHOR SPACING WILL DEPEND ON MOUNTING SUBSTRATE AND REGION OF PROJECT



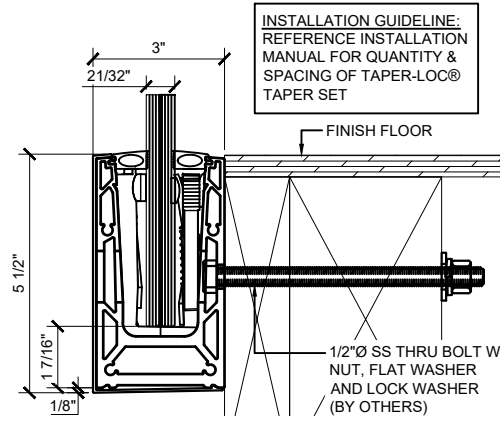
**FASCIA MOUNT DETAIL
STEEL SUBSTRATE**

6" AND 12" (305MM) O.C. SPACING IS STANDARD. ANCHOR SPACING WILL DEPEND ON MOUNTING SUBSTRATE AND REGION OF PROJECT



**FASCIA MOUNT DETAIL
STEEL SUBSTRATE**

6" AND 12" (305MM) O.C. SPACING IS STANDARD. ANCHOR SPACING WILL DEPEND ON MOUNTING SUBSTRATE AND REGION OF PROJECT



**FASCIA MOUNT DETAIL
WOOD SUBSTRATE**

6" AND 12" (305MM) O.C. SPACING IS STANDARD. ANCHOR SPACING WILL DEPEND ON MOUNTING SUBSTRATE AND REGION OF PROJECT

Revisions By:		
△	-	-
△	-	-
△	-	-
△	-	-

CRL

C.R. LAURENCE CO. ARCHITECTURAL PRODUCTS
2500 E. Verrill Avenue, Los Angeles, CA 90058-1897
PH: (800)-421-6144 FX: (800)-987-7501 www.crlaurence.com

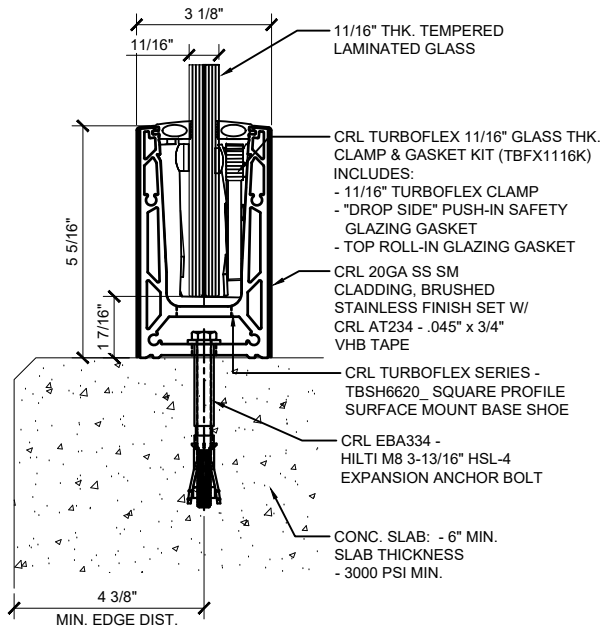
**TURBOFLEX
GLASS RAILING SYSTEM
FOR TEMPERED MONOLITHIC AND
LAMINATED GLASS**

**BASE SHOE OPTIONS
FASCIA MOUNT**

Drawn By: EDR
Date: 10/21/25
Scale: AS NOTED
File Name:
SYS0133A_TURBOFLEX_GRS.dwg

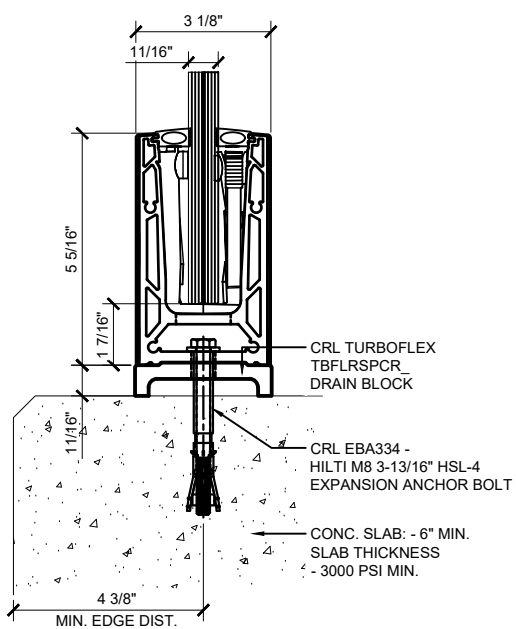
Sheet

TYPICAL TURBOFLEX SURFACE-MOUNT BASE SHOE ATTACHMENTS FOR 11/16" GLASS WITH STAINLESS STEEL CLADDING.



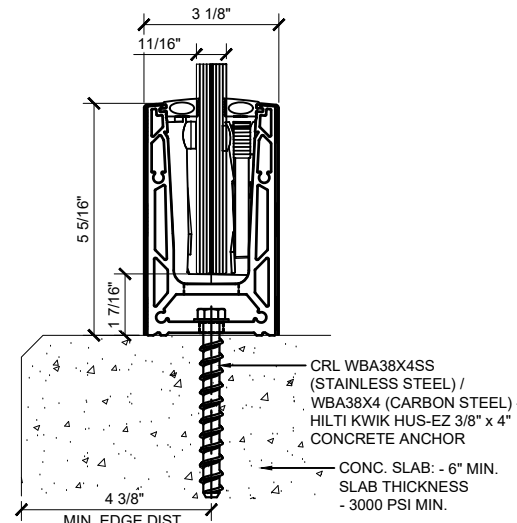
**SURFACE MOUNT DETAIL
CONCRETE SUBSTRATE**

6" AND 12" (305MM) O.C. SPACING IS STANDARD. ANCHOR SPACING WILL DEPEND ON MOUNTING SUBSTRATE AND REGION OF PROJECT



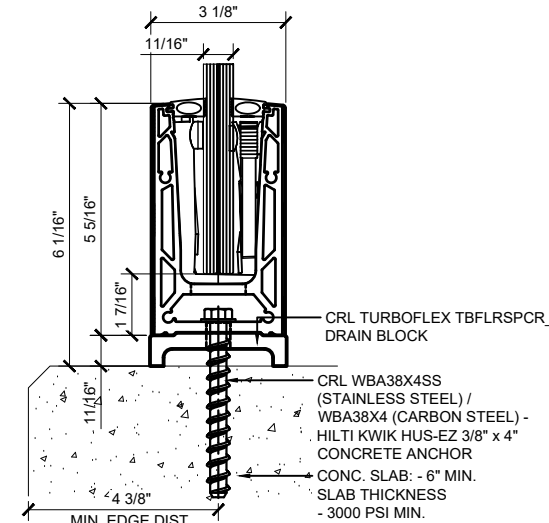
**SURFACE MOUNT DETAIL
CONCRETE SUBSTRATE W/ DRAIN BLOCK**

6" AND 12" (305MM) O.C. SPACING IS STANDARD. ANCHOR SPACING WILL DEPEND ON MOUNTING SUBSTRATE AND REGION OF PROJECT



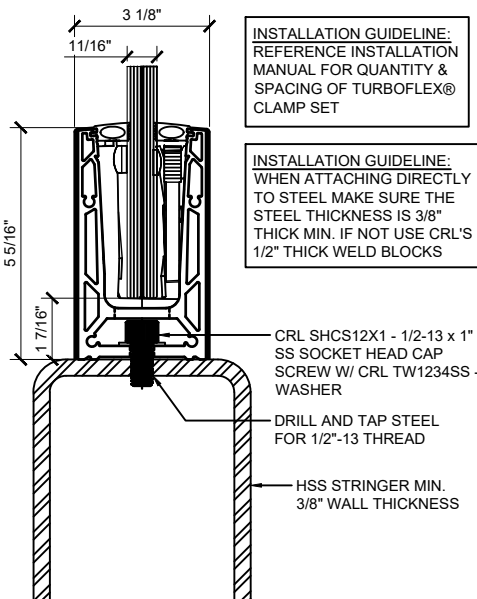
**SURFACE MOUNT DETAIL
CONCRETE SUBSTRATE**

6" AND 12" (305MM) O.C. SPACING IS STANDARD. ANCHOR SPACING WILL DEPEND ON MOUNTING SUBSTRATE AND REGION OF PROJECT



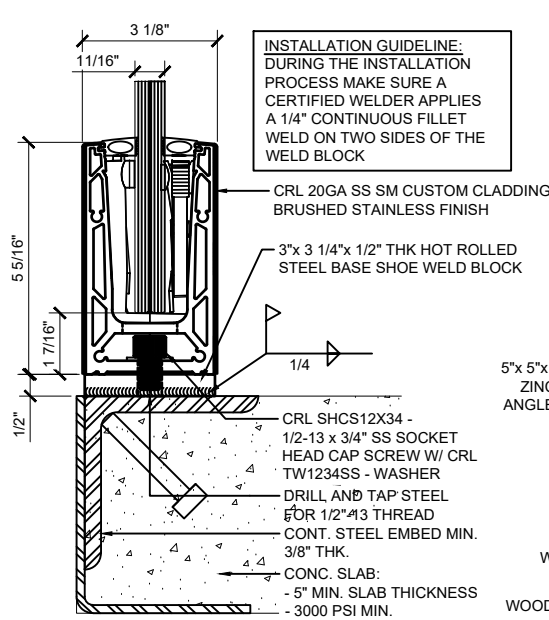
**SURFACE MOUNT DETAIL
CONCRETE SUBSTRATE W/ DRAIN BLOCK**

6" AND 12" (305MM) O.C. SPACING IS STANDARD. ANCHOR SPACING WILL DEPEND ON MOUNTING SUBSTRATE AND REGION OF PROJECT



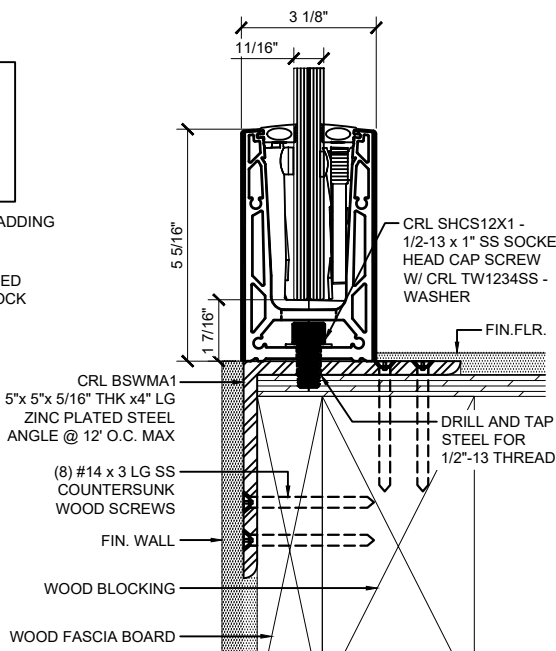
**SURFACE MOUNT DETAIL
STEEL SUBSTRATE**

6" AND 12" (305MM) O.C. SPACING IS STANDARD. ANCHOR SPACING WILL DEPEND ON MOUNTING SUBSTRATE AND REGION OF PROJECT



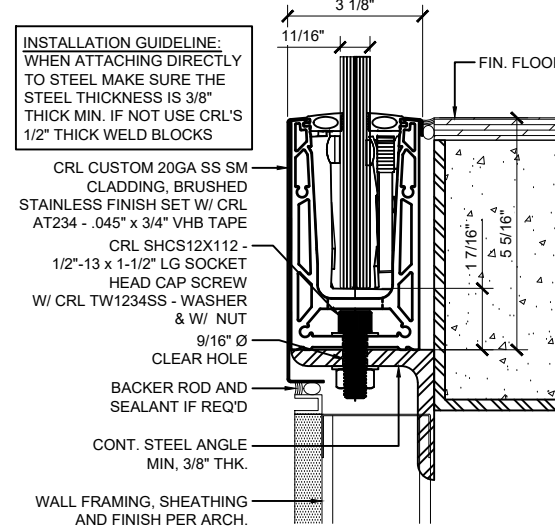
**SURFACE MOUNT DETAIL
STEEL SUBSTRATE W/ WELD BLOCK**

6" AND 12" (305MM) O.C. SPACING IS STANDARD. ANCHOR SPACING WILL DEPEND ON MOUNTING SUBSTRATE AND REGION OF PROJECT



**SURFACE MOUNT DETAIL
WOOD SUBSTRATE**

6" AND 12" (305MM) O.C. SPACING IS STANDARD. ANCHOR SPACING WILL DEPEND ON MOUNTING SUBSTRATE AND REGION OF PROJECT



**SURFACE MOUNT DETAIL
STEEL SUBSTRATE W/ CUSTOM CLADDING**

6" AND 12" (305MM) O.C. SPACING IS STANDARD. ANCHOR SPACING WILL DEPEND ON MOUNTING SUBSTRATE AND REGION OF PROJECT

Revisions By:			
△	-	-	-
△	-	-	-
△	-	-	-
△	-	-	-

CRL

CRL LAURENCE CO. ARCHITECTURAL PRODUCTS
2500 E. Vernon Avenue, Los Angeles, CA 90058-1897
PH: (800)-421-6144 FX: (800)-987-7501 www.crlaurence.com

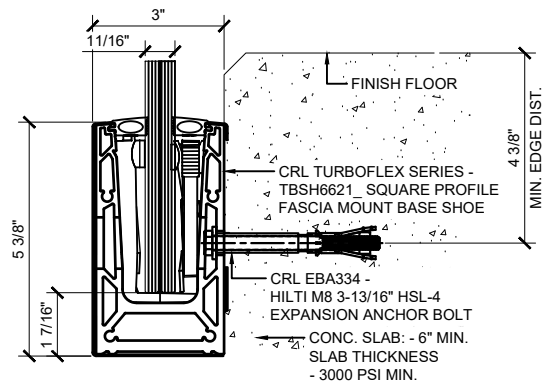
Description:
TURBOFLEX
GLASS RAILING SYSTEM
FOR TEMPERED MONOLITHIC AND
LAMINATED GLASS

BASE SHOE OPTIONS
SURFACE MOUNT

Drawn By: EDR
Date: 10/21/25
Scale: AS NOTED
File Name: SYS0133A_TURBOFLEX_GRS.dwg

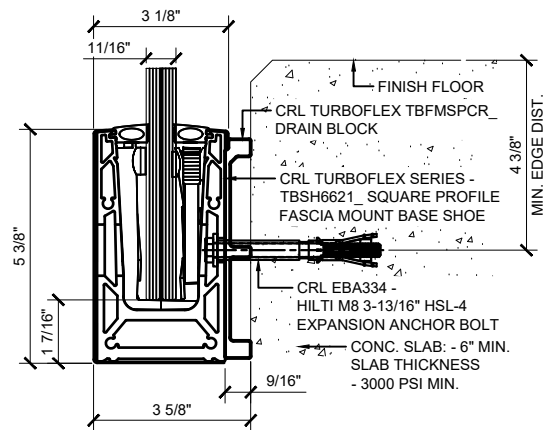
Sheet

TYPICAL TURBOFLEX FASCIA-MOUNT BASE SHOE ATTACHMENTS FOR 11/16" GLASS WITH STAINLESS STEEL CLADDING.



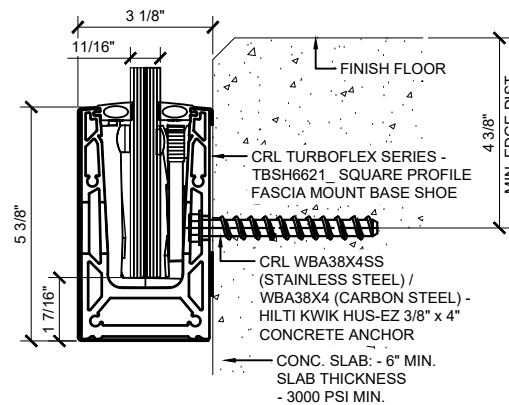
**FASCIA MOUNT DETAIL
CONCRETE SUBSTRATE**

6" AND 12" (305MM) O.C. SPACING IS STANDARD. ANCHOR SPACING WILL DEPEND ON MOUNTING SUBSTRATE AND REGION OF PROJECT



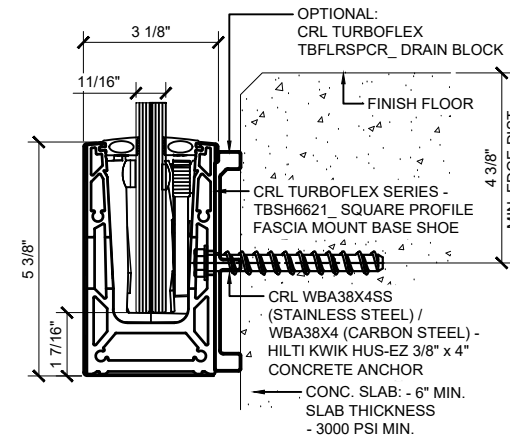
**FASCIA MOUNT DETAIL CONCRETE
SUBSTRATE W/ DRAIN BLOCK**

6" AND 12" (305MM) O.C. SPACING IS STANDARD. ANCHOR SPACING WILL DEPEND ON MOUNTING SUBSTRATE AND REGION OF PROJECT



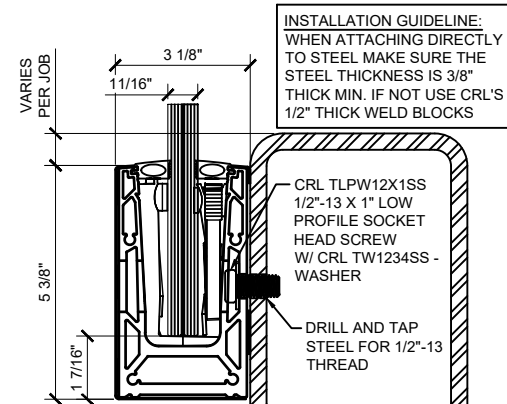
**FASCIA MOUNT DETAIL
CONCRETE SUBSTRATE**

6" AND 12" (305MM) O.C. SPACING IS STANDARD. ANCHOR SPACING WILL DEPEND ON MOUNTING SUBSTRATE AND REGION OF PROJECT



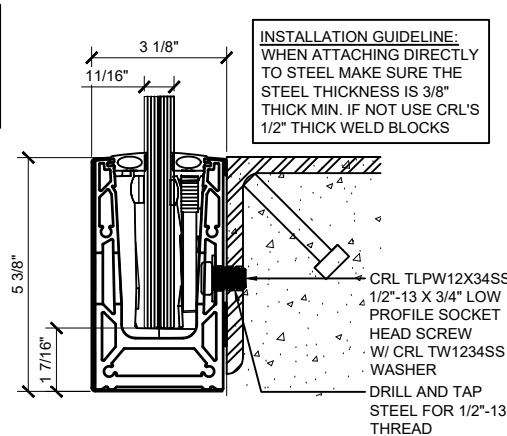
**FASCIA MOUNT DETAIL
CONCRETE SUBSTRATE W/ DRAIN BLOCK**

6" AND 12" (305MM) O.C. SPACING IS STANDARD. ANCHOR SPACING WILL DEPEND ON MOUNTING SUBSTRATE AND REGION OF PROJECT



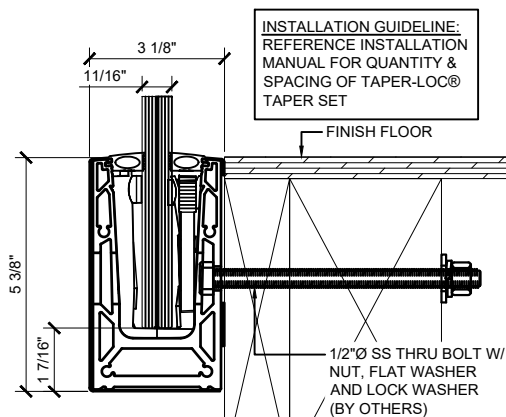
**FASCIA MOUNT DETAIL
STEEL SUBSTRATE**

6" AND 12" (305MM) O.C. SPACING IS STANDARD. ANCHOR SPACING WILL DEPEND ON MOUNTING SUBSTRATE AND REGION OF PROJECT



**FASCIA MOUNT DETAIL
STEEL SUBSTRATE**

6" AND 12" (305MM) O.C. SPACING IS STANDARD. ANCHOR SPACING WILL DEPEND ON MOUNTING SUBSTRATE AND REGION OF PROJECT



**FASCIA MOUNT DETAIL
WOOD SUBSTRATE**

6" AND 12" (305MM) O.C. SPACING IS STANDARD. ANCHOR SPACING WILL DEPEND ON MOUNTING SUBSTRATE AND REGION OF PROJECT

Revisions By:		
△	-	-
△	-	-
△	-	-
△	-	-

CRL
C.R. LAURENCE CO. ARCHITECTURAL PRODUCTS
2500 E. Vermont Avenue, Los Angeles, CA 90058-1897
PH: (800)-421-6144 FX: (800)-987-7301 www.crlaurence.com

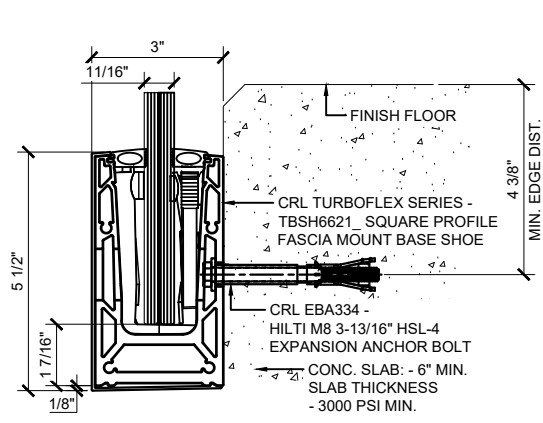
**TURBOFLEX
GLASS RAILING SYSTEM
FOR TEMPERED MONOLITHIC AND
LAMINATED GLASS**

**BASE SHOE OPTIONS
FASCIA MOUNT**

Drawn By: EDR
Date: 10/21/25
Scale: AS NOTED
File Name:
SYS0133A_TURBOFLEX_GRS.dwg

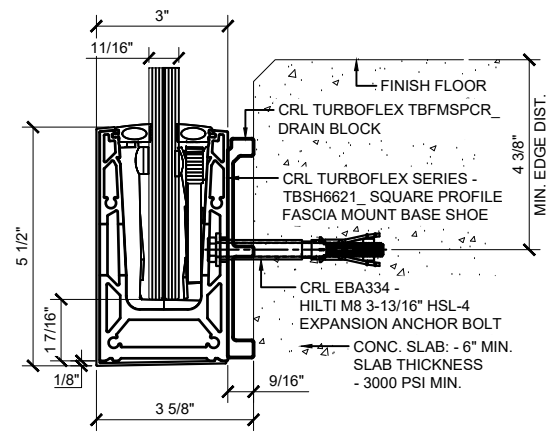
Sheet

TYPICAL TURBOFLEX SURFACE-MOUNT BASE SHOE ATTACHMENTS FOR 11/16" GLASS WITH SNAP-ON COVER.



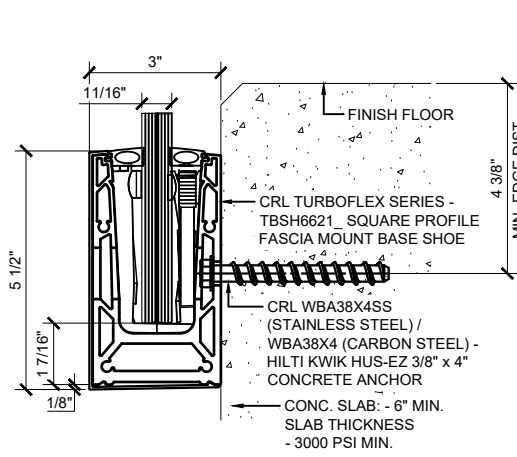
**FASCIA MOUNT DETAIL
CONCRETE SUBSTRATE**

6" AND 12" (305MM) O.C. SPACING IS STANDARD. ANCHOR SPACING WILL DEPEND ON MOUNTING SUBSTRATE AND REGION OF PROJECT



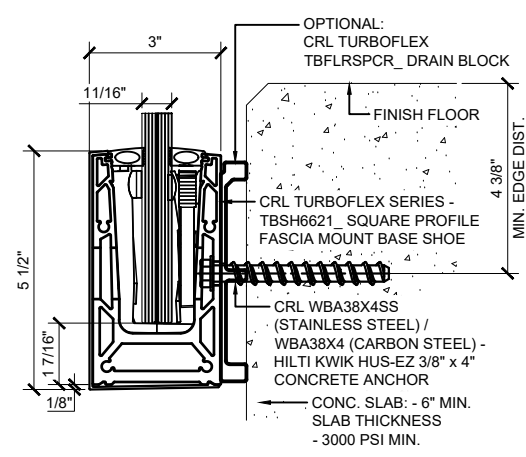
**FASCIA MOUNT DETAIL CONCRETE
SUBSTRATE W/ DRAIN BLOCK**

6" AND 12" (305MM) O.C. SPACING IS STANDARD. ANCHOR SPACING WILL DEPEND ON MOUNTING SUBSTRATE AND REGION OF PROJECT



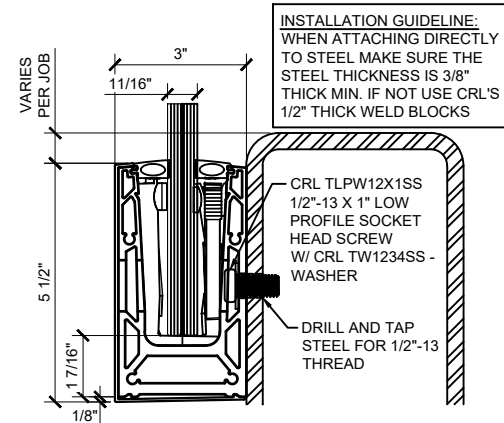
**FASCIA MOUNT DETAIL
CONCRETE SUBSTRATE**

6" AND 12" (305MM) O.C. SPACING IS STANDARD. ANCHOR SPACING WILL DEPEND ON MOUNTING SUBSTRATE AND REGION OF PROJECT



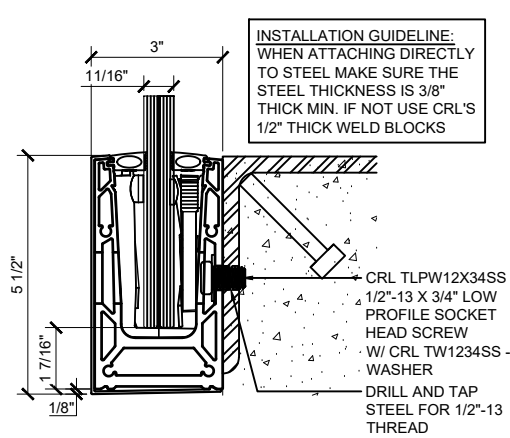
**FASCIA MOUNT DETAIL
CONCRETE SUBSTRATE W/ DRAIN BLOCK**

6" AND 12" (305MM) O.C. SPACING IS STANDARD. ANCHOR SPACING WILL DEPEND ON MOUNTING SUBSTRATE AND REGION OF PROJECT



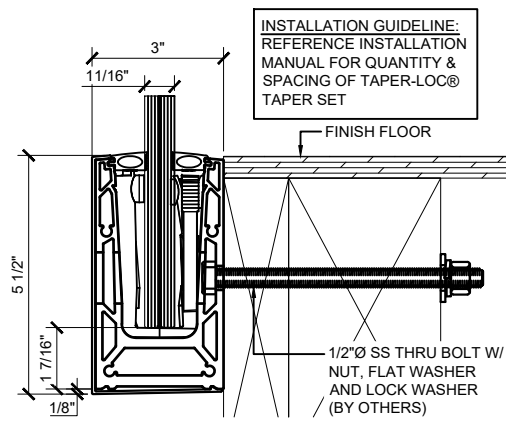
**FASCIA MOUNT DETAIL
STEEL SUBSTRATE**

6" AND 12" (305MM) O.C. SPACING IS STANDARD. ANCHOR SPACING WILL DEPEND ON MOUNTING SUBSTRATE AND REGION OF PROJECT



**FASCIA MOUNT DETAIL
STEEL SUBSTRATE**

6" AND 12" (305MM) O.C. SPACING IS STANDARD. ANCHOR SPACING WILL DEPEND ON MOUNTING SUBSTRATE AND REGION OF PROJECT



**FASCIA MOUNT DETAIL
WOOD SUBSTRATE**

6" AND 12" (305MM) O.C. SPACING IS STANDARD. ANCHOR SPACING WILL DEPEND ON MOUNTING SUBSTRATE AND REGION OF PROJECT

Revisions By:		
△	-	-
△	-	-
△	-	-
△	-	-

CRL

C.R. LAURENCE CO. ARCHITECTURAL PRODUCTS
2500 E. Vermont Avenue, Los Angeles, CA 90058-1897
PH: (800)-421-6144 FX: (800)-987-7501 www.crlaurence.com

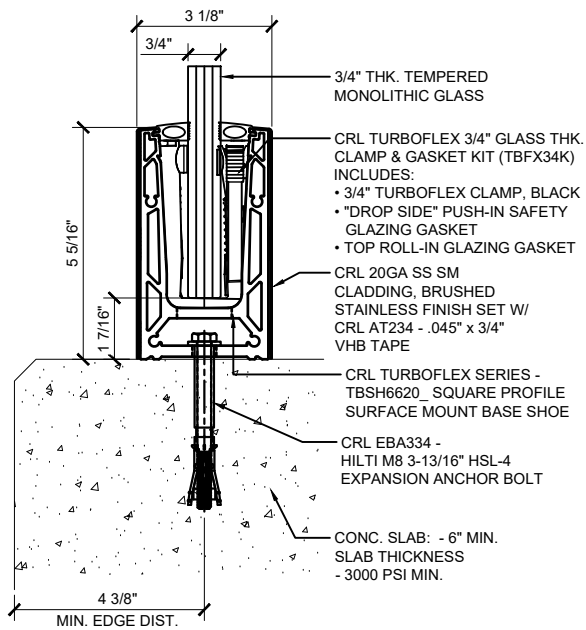
**TURBOFLEX
GLASS RAILING SYSTEM
FOR TEMPERED MONOLITHIC AND
LAMINATED GLASS**

**BASE SHOE OPTIONS
FASCIA MOUNT**

Drawn By: EDR
Date: 10/21/25
Scale: AS NOTED
File Name:
SYS0133A_TURBOFLEX_GRS.dwg

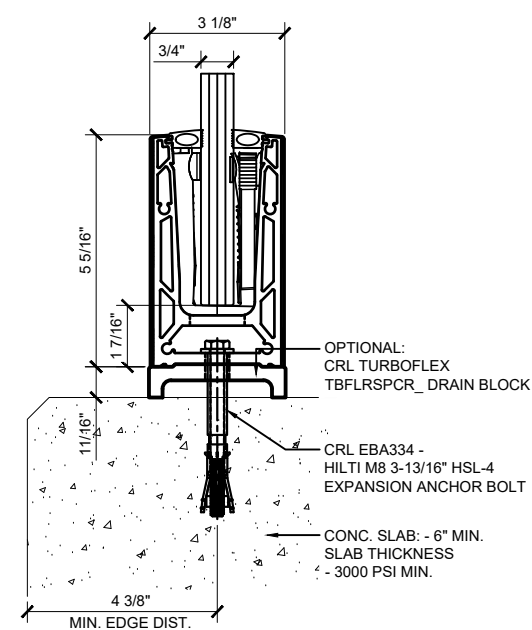
Sheet

TYPICAL TURBOFLEX SURFACE-MOUNT BASE SHOE ATTACHMENTS FOR 3/4" GLASS WITH STAINLESS STEEL CLADDING.



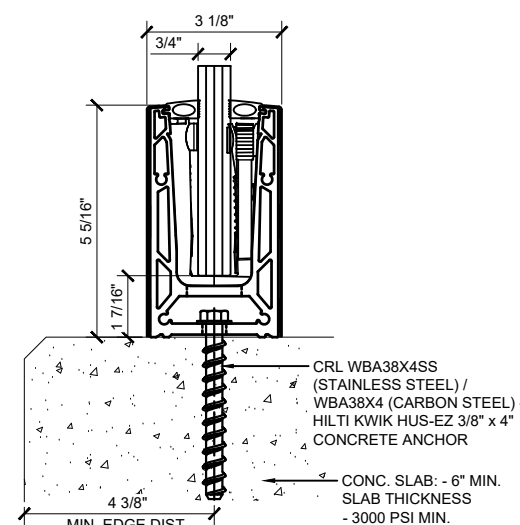
**SURFACE MOUNT DETAIL
CONCRETE SUBSTRATE**

6" AND 12" (305MM) O.C. SPACING IS STANDARD. ANCHOR SPACING WILL DEPEND ON MOUNTING SUBSTRATE AND REGION OF PROJECT



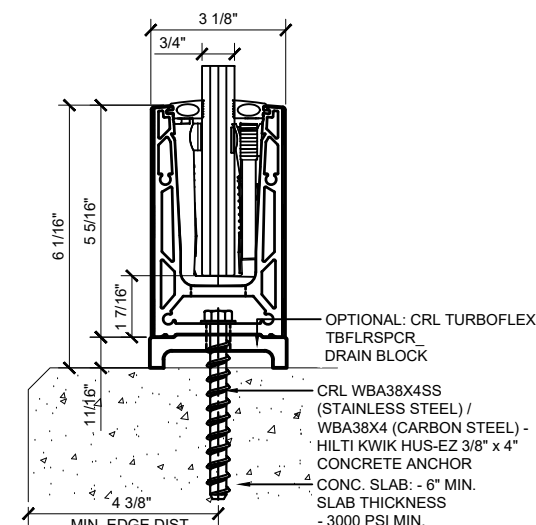
**SURFACE MOUNT DETAIL
CONCRETE SUBSTRATE W/ DRAIN BLOCK**

6" AND 12" (305MM) O.C. SPACING IS STANDARD. ANCHOR SPACING WILL DEPEND ON MOUNTING SUBSTRATE AND REGION OF PROJECT



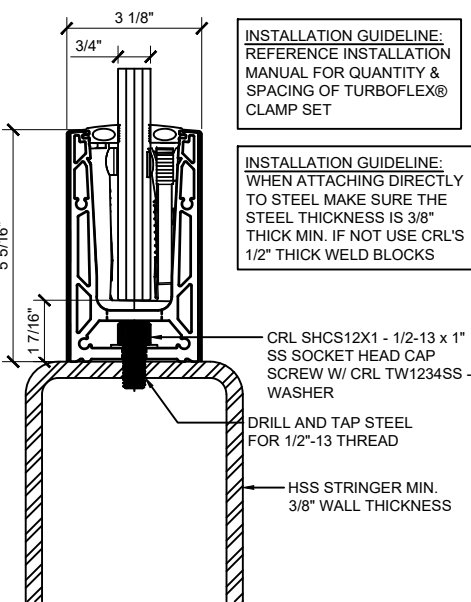
**SURFACE MOUNT DETAIL
CONCRETE SUBSTRATE W/ DRAIN BLOCK**

6" AND 12" (305MM) O.C. SPACING IS STANDARD. ANCHOR SPACING WILL DEPEND ON MOUNTING SUBSTRATE AND REGION OF PROJECT



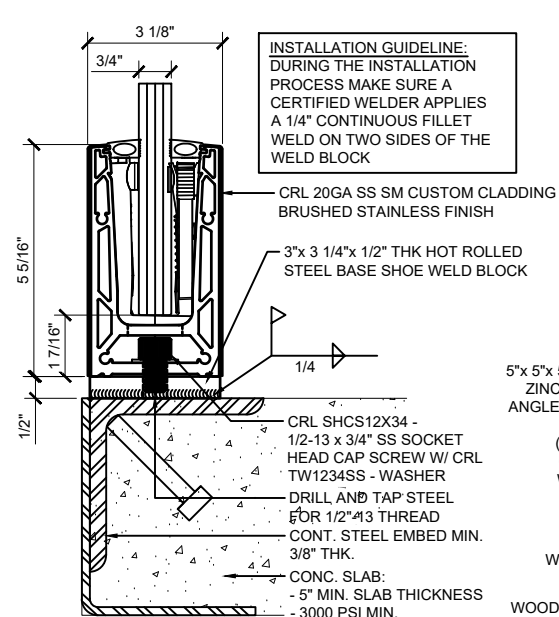
**SURFACE MOUNT DETAIL
CONCRETE SUBSTRATE W/ DRAIN BLOCK**

6" AND 12" (305MM) O.C. SPACING IS STANDARD. ANCHOR SPACING WILL DEPEND ON MOUNTING SUBSTRATE AND REGION OF PROJECT



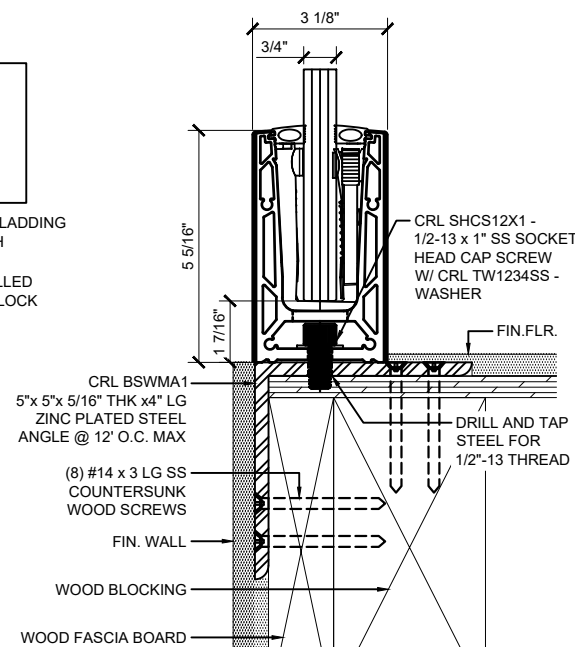
**SURFACE MOUNT DETAIL
STEEL SUBSTRATE**

6" AND 12" (305MM) O.C. SPACING IS STANDARD. ANCHOR SPACING WILL DEPEND ON MOUNTING SUBSTRATE AND REGION OF PROJECT



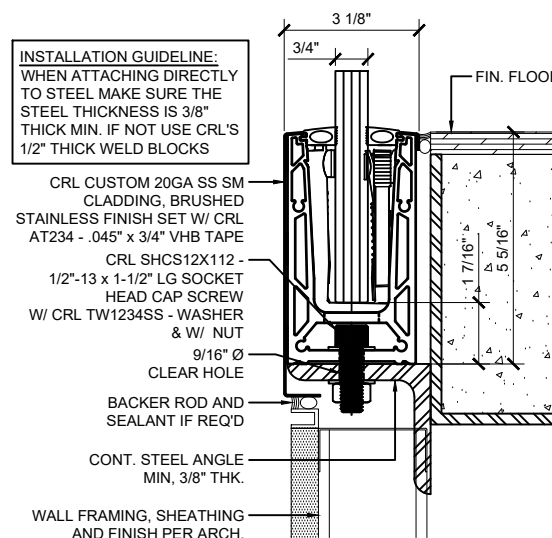
**SURFACE MOUNT DETAIL
STEEL SUBSTRATE W/ WELD BLOCK**

6" AND 12" (305MM) O.C. SPACING IS STANDARD. ANCHOR SPACING WILL DEPEND ON MOUNTING SUBSTRATE AND REGION OF PROJECT



**SURFACE MOUNT DETAIL
WOOD SUBSTRATE**

6" AND 12" (305MM) O.C. SPACING IS STANDARD. ANCHOR SPACING WILL DEPEND ON MOUNTING SUBSTRATE AND REGION OF PROJECT



**SURFACE MOUNT DETAIL
STEEL SUBSTRATE W/ CUSTOM CLADDING**

6" AND 12" (305MM) O.C. SPACING IS STANDARD. ANCHOR SPACING WILL DEPEND ON MOUNTING SUBSTRATE AND REGION OF PROJECT

Revisions By:

△	-	-
△	-	-
△	-	-
△	-	-
△	-	-

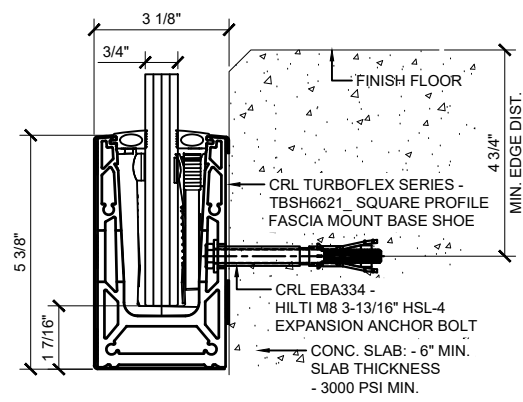
CRL
 C.R. LAURENCE CO. ARCHITECTURAL PRODUCTS
 2500 E. Vermont Avenue, Los Angeles, CA 90058-1897
 PH (800)-421-6144 FX (800)-987-7301 www.crlaurence.com

Description:
 TURBOFLEX
 GLASS RAILING SYSTEM
 FOR TEMPERED MONOLITHIC AND
 LAMINATED GLASS

BASE SHOE OPTIONS
 SURFACE MOUNT

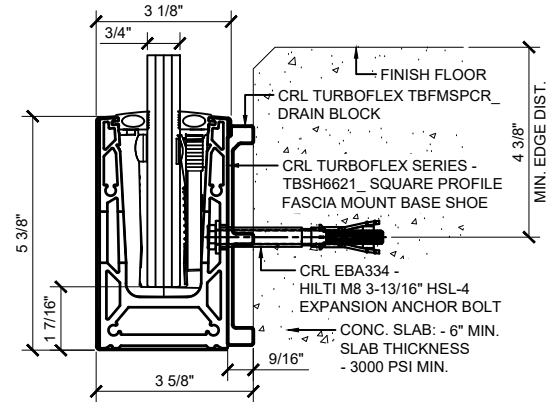
Drawn By: EDR
 Date: 10/21/25
 Scale: AS NOTED
 File Name:
 SYS0133A_TURBOFLEX_GRS.dwg

TYPICAL TURBOFLEX FASCIA-MOUNT BASE SHOE ATTACHMENTS FOR 3/4" GLASS WITH STAINLESS STEEL CLADDING.



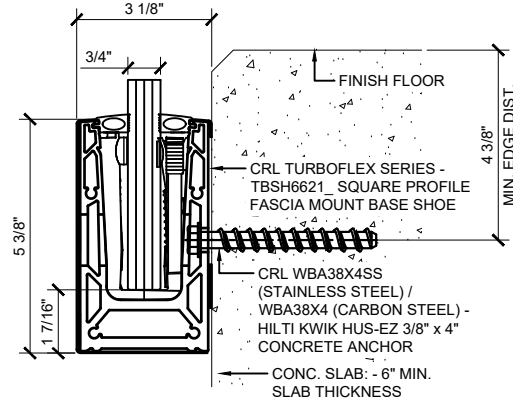
**FASCIA MOUNT DETAIL
CONCRETE SUBSTRATE**

6" AND 12" (305MM) O.C. SPACING IS STANDARD. ANCHOR SPACING WILL DEPEND ON MOUNTING SUBSTRATE AND REGION OF PROJECT



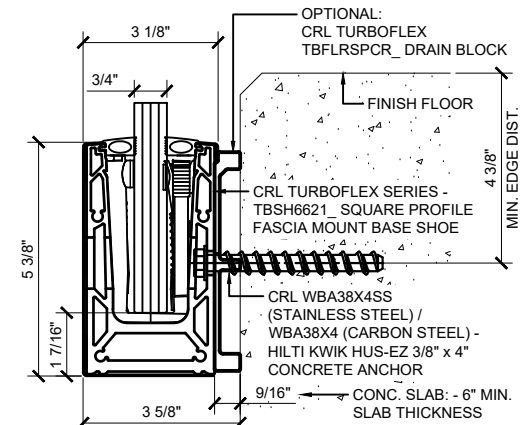
**FASCIA MOUNT DETAIL CONCRETE
SUBSTRATE W/ DRAIN BLOCK**

6" AND 12" (305MM) O.C. SPACING IS STANDARD. ANCHOR SPACING WILL DEPEND ON MOUNTING SUBSTRATE AND REGION OF PROJECT



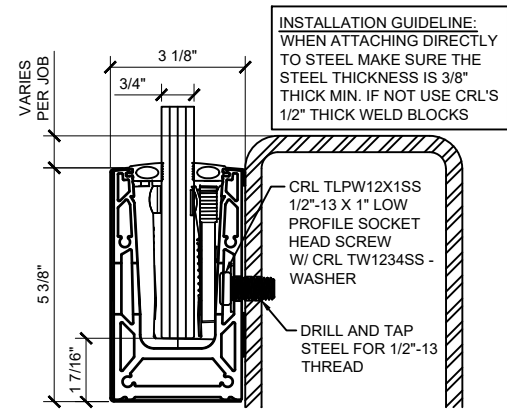
**FASCIA MOUNT DETAIL
CONCRETE SUBSTRATE**

6" AND 12" (305MM) O.C. SPACING IS STANDARD. ANCHOR SPACING WILL DEPEND ON MOUNTING SUBSTRATE AND REGION OF PROJECT



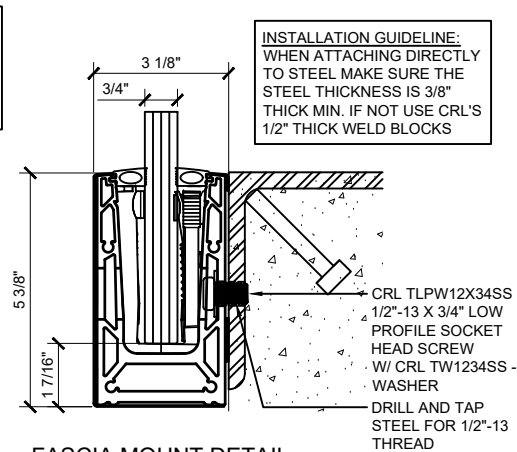
**FASCIA MOUNT DETAIL
CONCRETE SUBSTRATE W/ DRAIN BLOCK**

6" AND 12" (305MM) O.C. SPACING IS STANDARD. ANCHOR SPACING WILL DEPEND ON MOUNTING SUBSTRATE AND REGION OF PROJECT



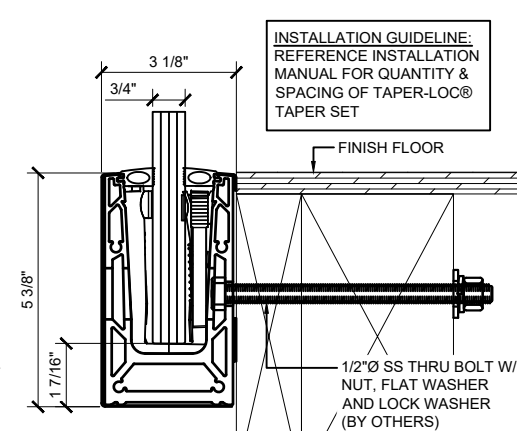
**FASCIA MOUNT DETAIL
STEEL SUBSTRATE**

6" AND 12" (305MM) O.C. SPACING IS STANDARD. ANCHOR SPACING WILL DEPEND ON MOUNTING SUBSTRATE AND REGION OF PROJECT



**FASCIA MOUNT DETAIL
STEEL SUBSTRATE**

6" AND 12" (305MM) O.C. SPACING IS STANDARD. ANCHOR SPACING WILL DEPEND ON MOUNTING SUBSTRATE AND REGION OF PROJECT



**FASCIA MOUNT DETAIL
WOOD SUBSTRATE**

6" AND 12" (305MM) O.C. SPACING IS STANDARD. ANCHOR SPACING WILL DEPEND ON MOUNTING SUBSTRATE AND REGION OF PROJECT

INSTALLATION GUIDELINE:
WHEN ATTACHING DIRECTLY TO STEEL MAKE SURE THE STEEL THICKNESS IS 3/8" THICK MIN. IF NOT USE CRL'S 1/2" THICK WELD BLOCKS

INSTALLATION GUIDELINE:
WHEN ATTACHING DIRECTLY TO STEEL MAKE SURE THE STEEL THICKNESS IS 3/8" THICK MIN. IF NOT USE CRL'S 1/2" THICK WELD BLOCKS

INSTALLATION GUIDELINE:
REFERENCE INSTALLATION MANUAL FOR QUANTITY & SPACING OF TAPER-LOC® TAPER SET

Revisions By:		
△	-	-
△	-	-
△	-	-
△	-	-



CRL LAURENCE CO. ARCHITECTURAL PRODUCTS
2500 E. Vernon Avenue, Los Angeles, CA 90058-1897
PH: (800)-421-6144 FX: (800)-987-7501 www.crlaurence.com

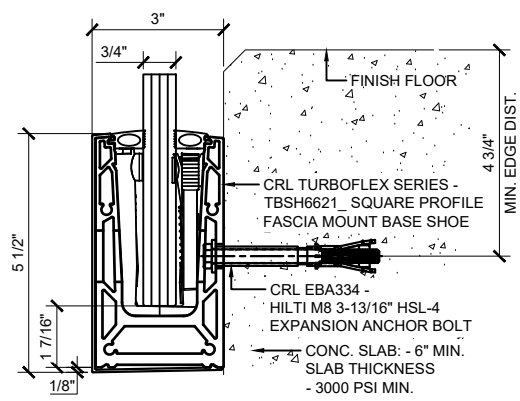
**TURBOFLEX
GLASS RAILING SYSTEM
FOR TEMPERED MONOLITHIC AND
LAMINATED GLASS**

**BASE SHOE OPTIONS
FASCIA MOUNT**

Drawn By: EDR
Date: 10/21/25
Scale: AS NOTED
File Name:
SYS0133A_TURBOFLEX_GRS.dwg

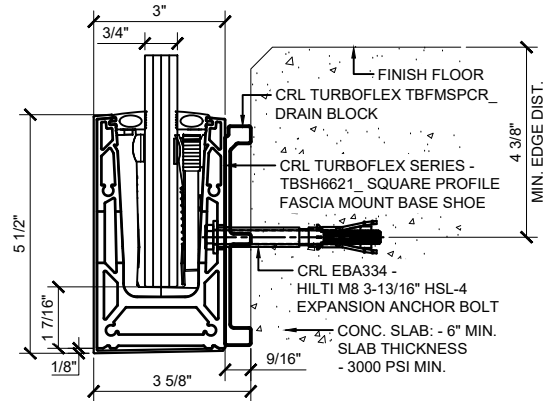
Sheet

TYPICAL TURBOFLEX SURFACE-MOUNT BASE SHOE ATTACHMENTS FOR 3/4" GLASS WITH SNAP-ON COVER.



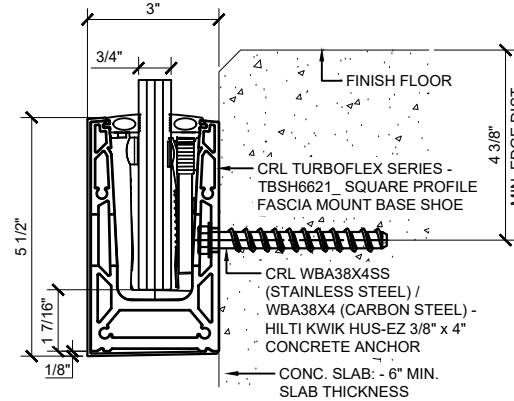
**FASCIA MOUNT DETAIL
CONCRETE SUBSTRATE**

6" AND 12" (305MM) O.C. SPACING IS STANDARD. ANCHOR SPACING WILL DEPEND ON MOUNTING SUBSTRATE AND REGION OF PROJECT



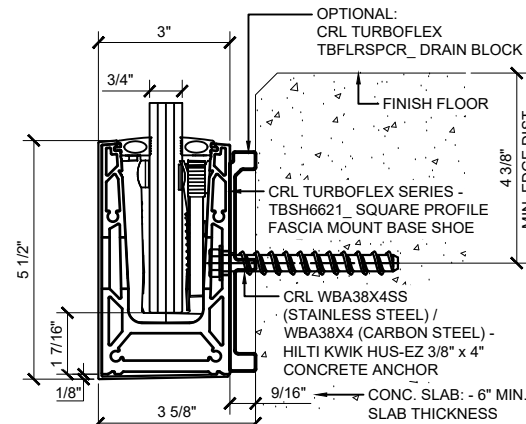
**FASCIA MOUNT DETAIL CONCRETE
SUBSTRATE W/ DRAIN BLOCK**

6" AND 12" (305MM) O.C. SPACING IS STANDARD. ANCHOR SPACING WILL DEPEND ON MOUNTING SUBSTRATE AND REGION OF PROJECT



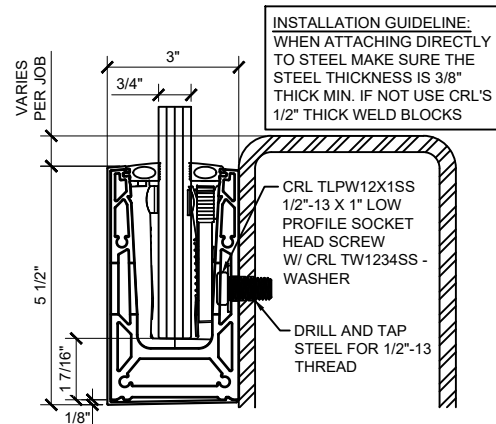
**FASCIA MOUNT DETAIL
CONCRETE SUBSTRATE**

6" AND 12" (305MM) O.C. SPACING IS STANDARD. ANCHOR SPACING WILL DEPEND ON MOUNTING SUBSTRATE AND REGION OF PROJECT



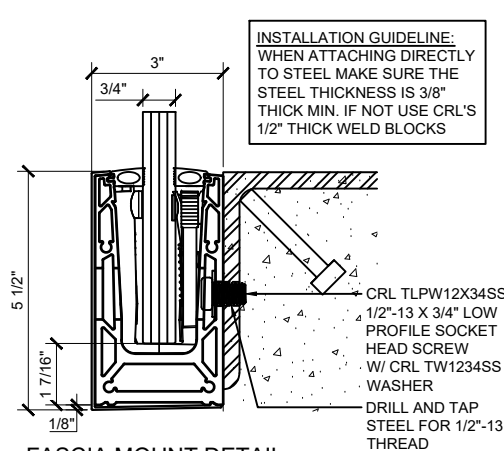
**FASCIA MOUNT DETAIL
CONCRETE SUBSTRATE W/ DRAIN BLOCK**

6" AND 12" (305MM) O.C. SPACING IS STANDARD. ANCHOR SPACING WILL DEPEND ON MOUNTING SUBSTRATE AND REGION OF PROJECT



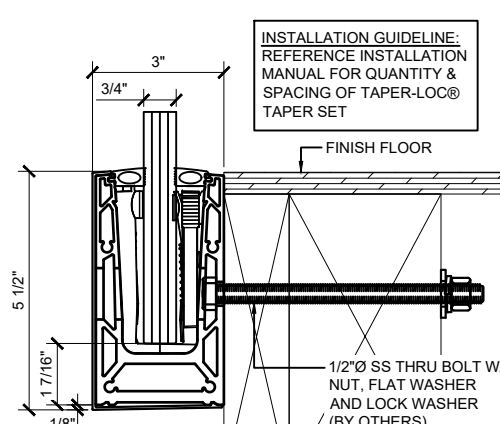
**FASCIA MOUNT DETAIL
STEEL SUBSTRATE**

6" AND 12" (305MM) O.C. SPACING IS STANDARD. ANCHOR SPACING WILL DEPEND ON MOUNTING SUBSTRATE AND REGION OF PROJECT



**FASCIA MOUNT DETAIL
STEEL SUBSTRATE**

6" AND 12" (305MM) O.C. SPACING IS STANDARD. ANCHOR SPACING WILL DEPEND ON MOUNTING SUBSTRATE AND REGION OF PROJECT



**FASCIA MOUNT DETAIL
WOOD SUBSTRATE**

6" AND 12" (305MM) O.C. SPACING IS STANDARD. ANCHOR SPACING WILL DEPEND ON MOUNTING SUBSTRATE AND REGION OF PROJECT

INSTALLATION GUIDELINE:
WHEN ATTACHING DIRECTLY
TO STEEL MAKE SURE THE
STEEL THICKNESS IS 3/8"
THICK MIN. IF NOT USE CRL'S
1/2" THICK WELD BLOCKS

INSTALLATION GUIDELINE:
WHEN ATTACHING DIRECTLY
TO STEEL MAKE SURE THE
STEEL THICKNESS IS 3/8"
THICK MIN. IF NOT USE CRL'S
1/2" THICK WELD BLOCKS

INSTALLATION GUIDELINE:
REFERENCE INSTALLATION
MANUAL FOR QUANTITY &
SPACING OF TAPER-LOC®
TAPER SET

Revisions By:		
△	-	-
△	-	-
△	-	-
△	-	-

CRL

CRL LAURENCE CO. ARCHITECTURAL PRODUCTS
2500 E. Vermont Avenue, Los Angeles, CA 90058-1897
PH: (800)-421-6144 FX: (800)-987-7501 www.crlaurence.com

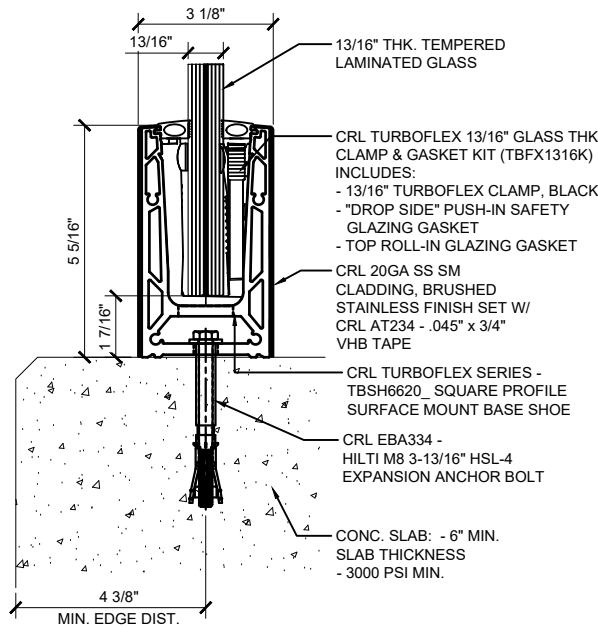
**TURBOFLEX
GLASS RAILING SYSTEM
FOR TEMPERED MONOLITHIC AND
LAMINATED GLASS**

**BASE SHOE OPTIONS
FASCIA MOUNT**

Drawn By: EDR
Date: 10/21/25
Scale: AS NOTED
File Name:
SYS0133A_TURBOFLEX_GRS.dwg

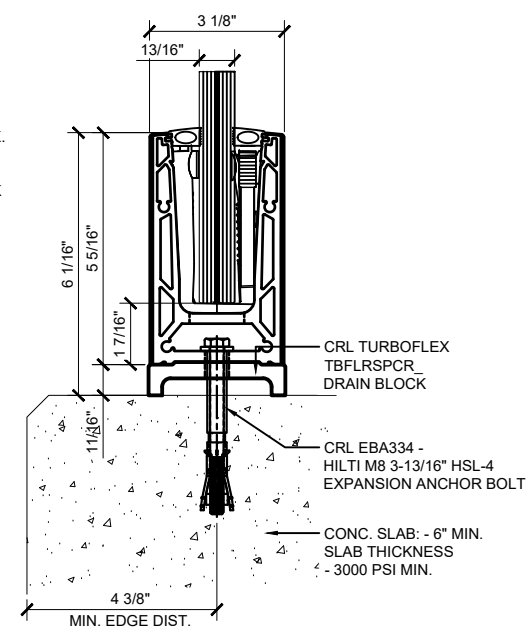
Sheet

TYPICAL TURBOFLEX SURFACE-MOUNT BASE SHOE ATTACHMENTS FOR 13/16" GLASS WITH STAINLESS STEEL CLADDING.



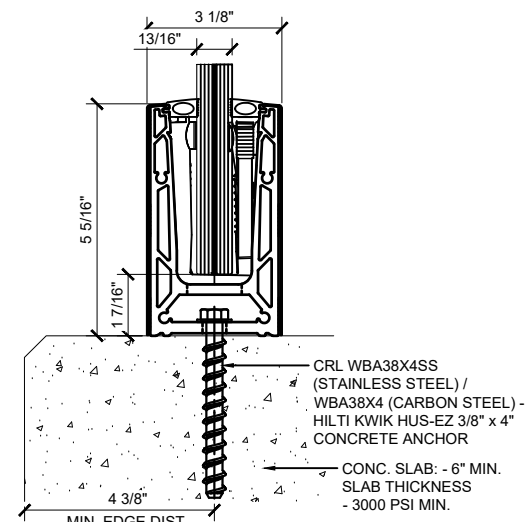
**SURFACE MOUNT DETAIL
CONCRETE SUBSTRATE**

6" AND 12" (305MM) O.C. SPACING IS STANDARD. ANCHOR SPACING WILL DEPEND ON MOUNTING SUBSTRATE AND REGION OF PROJECT



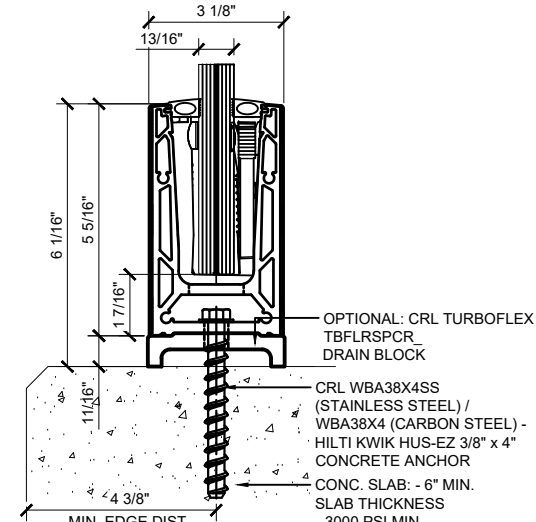
**SURFACE MOUNT DETAIL
CONCRETE SUBSTRATE W/ DRAIN BLOCK**

6" AND 12" (305MM) O.C. SPACING IS STANDARD. ANCHOR SPACING WILL DEPEND ON MOUNTING SUBSTRATE AND REGION OF PROJECT



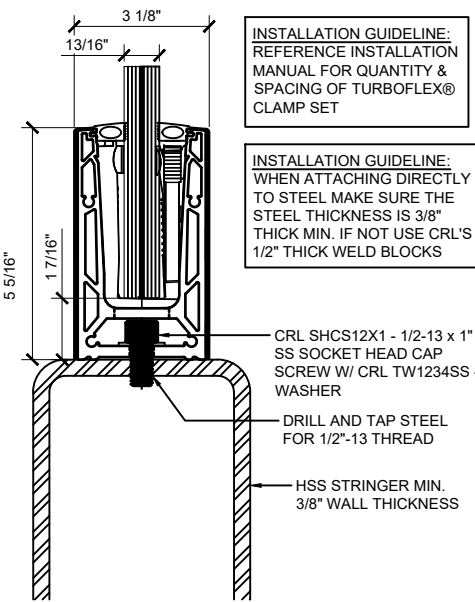
**SURFACE MOUNT DETAIL
CONCRETE SUBSTRATE**

6" AND 12" (305MM) O.C. SPACING IS STANDARD. ANCHOR SPACING WILL DEPEND ON MOUNTING SUBSTRATE AND REGION OF PROJECT



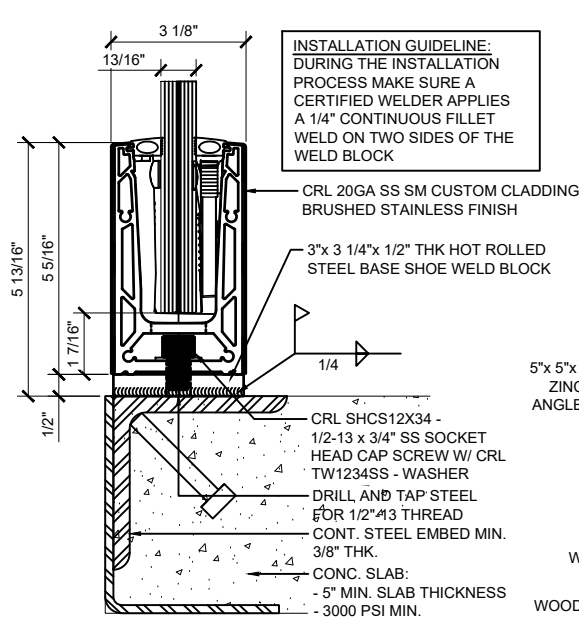
**SURFACE MOUNT DETAIL
CONCRETE SUBSTRATE W/ DRAIN BLOCK**

6" AND 12" (305MM) O.C. SPACING IS STANDARD. ANCHOR SPACING WILL DEPEND ON MOUNTING SUBSTRATE AND REGION OF PROJECT



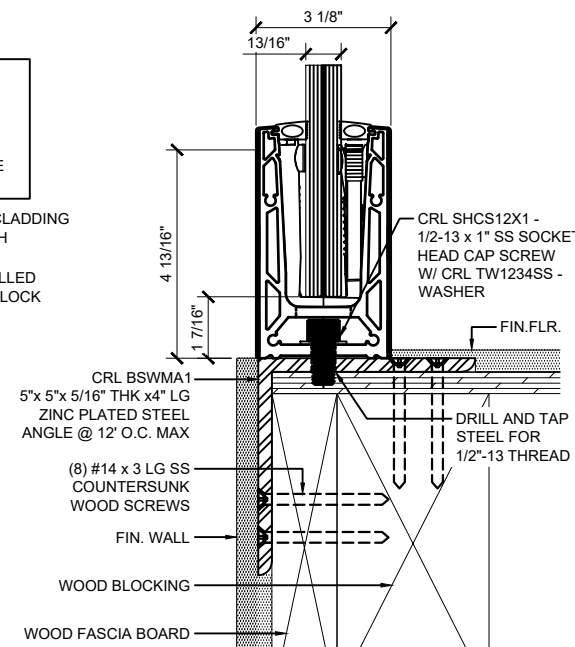
**SURFACE MOUNT DETAIL
STEEL SUBSTRATE**

6" AND 12" (305MM) O.C. SPACING IS STANDARD. ANCHOR SPACING WILL DEPEND ON MOUNTING SUBSTRATE AND REGION OF PROJECT



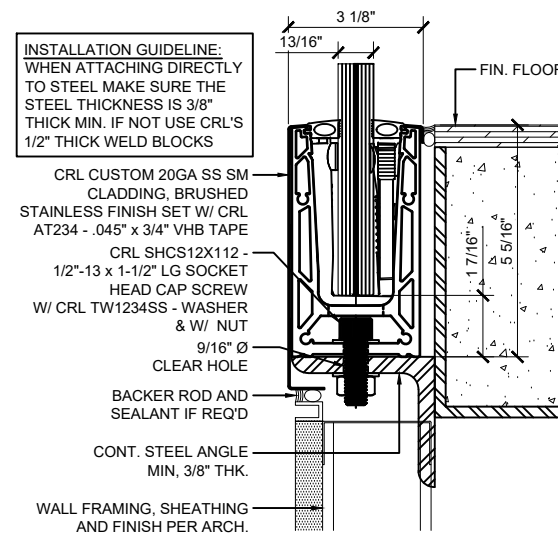
**SURFACE MOUNT DETAIL
STEEL SUBSTRATE W/ WELD BLOCK**

6" AND 12" (305MM) O.C. SPACING IS STANDARD. ANCHOR SPACING WILL DEPEND ON MOUNTING SUBSTRATE AND REGION OF PROJECT



**SURFACE MOUNT DETAIL
WOOD SUBSTRATE**

6" AND 12" (305MM) O.C. SPACING IS STANDARD. ANCHOR SPACING WILL DEPEND ON MOUNTING SUBSTRATE AND REGION OF PROJECT



**SURFACE MOUNT DETAIL
STEEL SUBSTRATE W/ CUSTOM CLADDING**

6" AND 12" (305MM) O.C. SPACING IS STANDARD. ANCHOR SPACING WILL DEPEND ON MOUNTING SUBSTRATE AND REGION OF PROJECT

Revisions By:

△	-	-
△	-	-
△	-	-
△	-	-
△	-	-

CRL

CRL LAURENCE CO. ARCHITECTURAL PRODUCTS
2500 E. Vermont Avenue, Los Angeles, CA 90058-1897
PH (800)-421-6144 FX (800)-987-7301 www.crlaurence.com

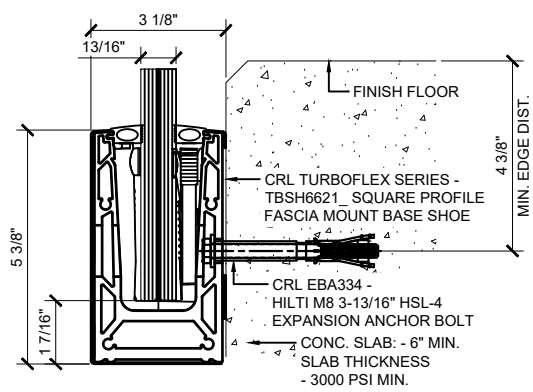
Description:
**TURBOFLEX
GLASS RAILING SYSTEM
FOR TEMPERED MONOLITHIC AND
LAMINATED GLASS**

BASE SHOE OPTIONS
SURFACE MOUNT

Drawn By: EDR
Date: 10/21/25
Scale: AS NOTED
File Name:
SYS0133A_TURBOFLEX_GRS.dwg

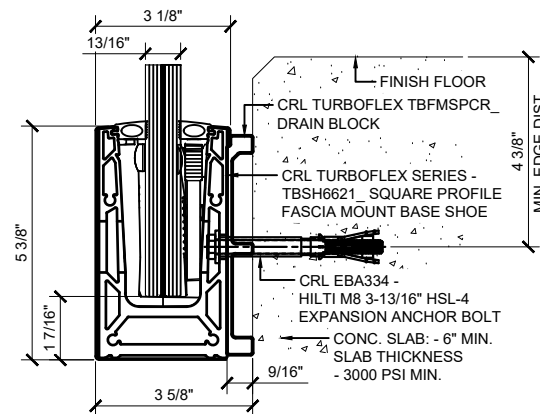
Sheet

TYPICAL TURBOFLEX FASCIA-MOUNT BASE SHOE ATTACHMENTS FOR 13/16" GLASS WITH STAINLESS STEEL CLADDING.



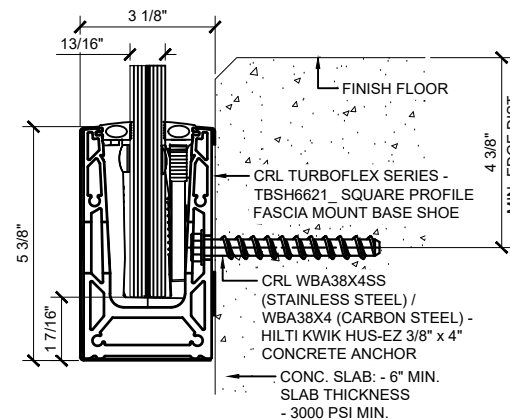
**FASCIA MOUNT DETAIL
CONCRETE SUBSTRATE**

6" AND 12" (305MM) O.C. SPACING IS STANDARD. ANCHOR SPACING WILL DEPEND ON MOUNTING SUBSTRATE AND REGION OF PROJECT



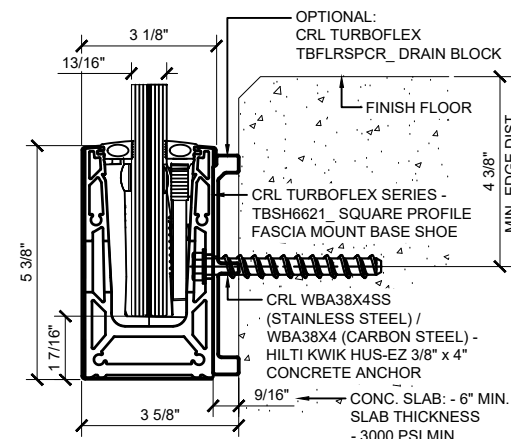
**FASCIA MOUNT DETAIL CONCRETE
SUBSTRATE W/ DRAIN BLOCK**

6" AND 12" (305MM) O.C. SPACING IS STANDARD. ANCHOR SPACING WILL DEPEND ON MOUNTING SUBSTRATE AND REGION OF PROJECT



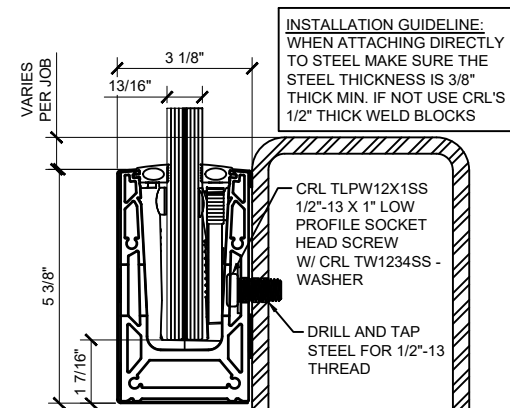
**FASCIA MOUNT DETAIL
CONCRETE SUBSTRATE**

6" AND 12" (305MM) O.C. SPACING IS STANDARD. ANCHOR SPACING WILL DEPEND ON MOUNTING SUBSTRATE AND REGION OF PROJECT



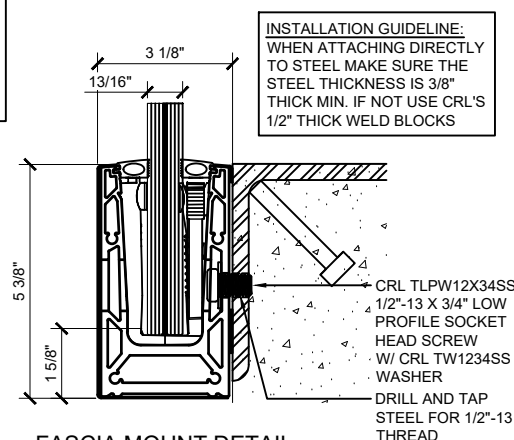
**FASCIA MOUNT DETAIL
CONCRETE SUBSTRATE W/ DRAIN BLOCK**

6" AND 12" (305MM) O.C. SPACING IS STANDARD. ANCHOR SPACING WILL DEPEND ON MOUNTING SUBSTRATE AND REGION OF PROJECT



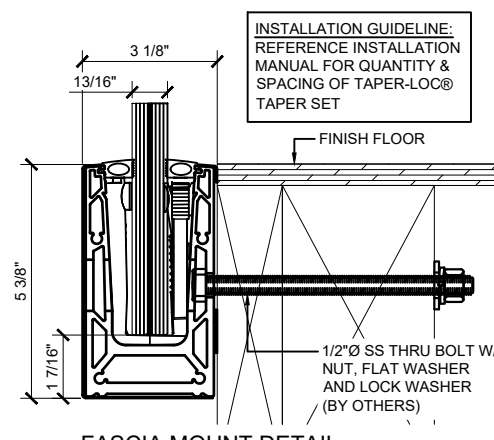
**FASCIA MOUNT DETAIL
STEEL SUBSTRATE**

6" AND 12" (305MM) O.C. SPACING IS STANDARD. ANCHOR SPACING WILL DEPEND ON MOUNTING SUBSTRATE AND REGION OF PROJECT



**FASCIA MOUNT DETAIL
STEEL SUBSTRATE**

6" AND 12" (305MM) O.C. SPACING IS STANDARD. ANCHOR SPACING WILL DEPEND ON MOUNTING SUBSTRATE AND REGION OF PROJECT



**FASCIA MOUNT DETAIL
WOOD SUBSTRATE**

6" AND 12" (305MM) O.C. SPACING IS STANDARD. ANCHOR SPACING WILL DEPEND ON MOUNTING SUBSTRATE AND REGION OF PROJECT

Revisions By:		
△	-	-
△	-	-
△	-	-
△	-	-

CRL

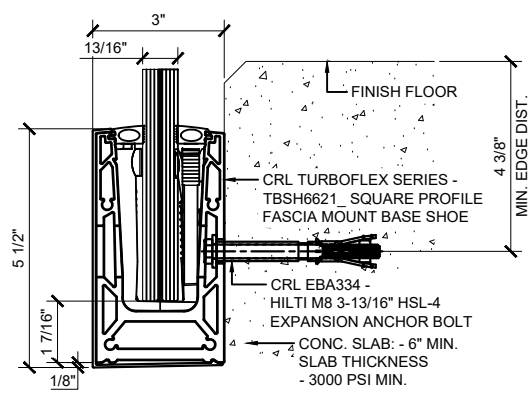
C.R. LAURENCE CO. ARCHITECTURAL PRODUCTS
2500 E. Vernon Avenue, Los Angeles, CA 90058-1897
PH: (800)-421-6144 FX: (800)-987-7501 www.crlaurence.com

**TURBOFLEX
GLASS RAILING SYSTEM
FOR TEMPERED MONOLITHIC AND
LAMINATED GLASS**

**BASE SHOE OPTIONS
FASCIA MOUNT**

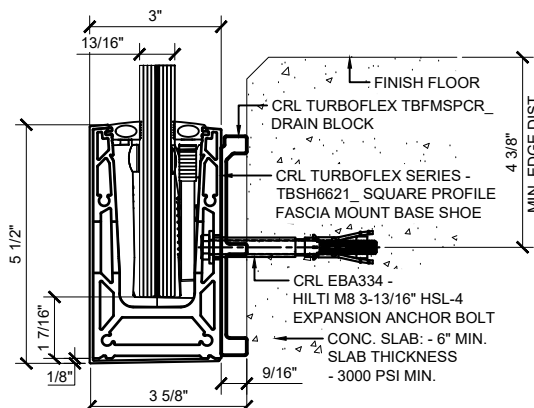
Drawn By: EDR
Date: 10/21/25
Scale: AS NOTED
File Name:
SYS0133A_TURBOFLEX_GRS.dwg

TYPICAL TURBOFLEX SURFACE-MOUNT BASE SHOE ATTACHMENTS FOR 13/16" GLASS WITH SNAP-ON COVER.



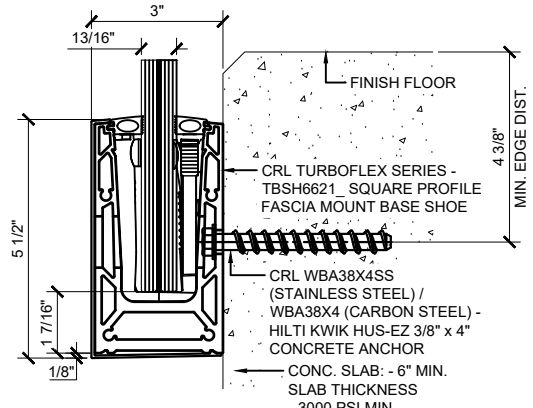
**FASCIA MOUNT DETAIL
CONCRETE SUBSTRATE**

6" AND 12" (305MM) O.C. SPACING IS STANDARD. ANCHOR SPACING WILL DEPEND ON MOUNTING SUBSTRATE AND REGION OF PROJECT



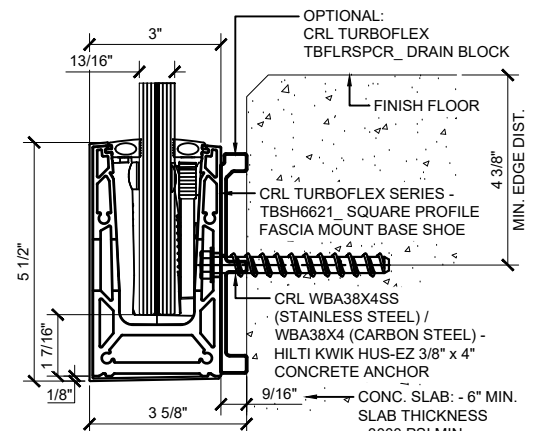
**FASCIA MOUNT DETAIL CONCRETE
SUBSTRATE W/ DRAIN BLOCK**

6" AND 12" (305MM) O.C. SPACING IS STANDARD. ANCHOR SPACING WILL DEPEND ON MOUNTING SUBSTRATE AND REGION OF PROJECT



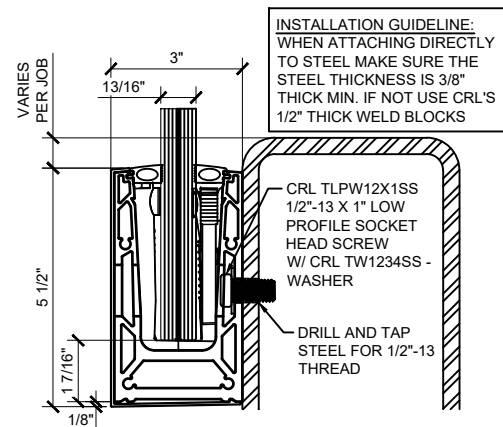
**FASCIA MOUNT DETAIL
CONCRETE SUBSTRATE**

6" AND 12" (305MM) O.C. SPACING IS STANDARD. ANCHOR SPACING WILL DEPEND ON MOUNTING SUBSTRATE AND REGION OF PROJECT



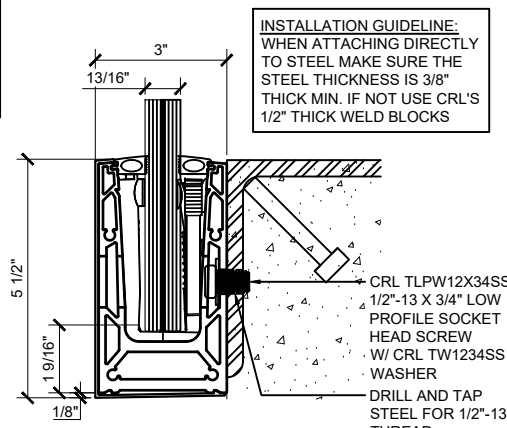
**FASCIA MOUNT DETAIL
CONCRETE SUBSTRATE W/ DRAIN BLOCK**

6" AND 12" (305MM) O.C. SPACING IS STANDARD. ANCHOR SPACING WILL DEPEND ON MOUNTING SUBSTRATE AND REGION OF PROJECT



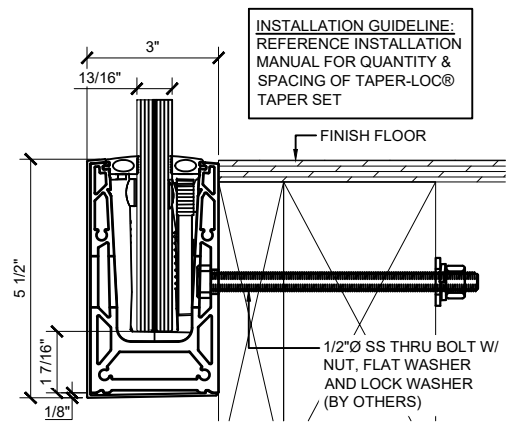
**FASCIA MOUNT DETAIL
STEEL SUBSTRATE**

6" AND 12" (305MM) O.C. SPACING IS STANDARD. ANCHOR SPACING WILL DEPEND ON MOUNTING SUBSTRATE AND REGION OF PROJECT



**FASCIA MOUNT DETAIL
STEEL SUBSTRATE**

6" AND 12" (305MM) O.C. SPACING IS STANDARD. ANCHOR SPACING WILL DEPEND ON MOUNTING SUBSTRATE AND REGION OF PROJECT



**FASCIA MOUNT DETAIL
WOOD SUBSTRATE**

6" AND 12" (305MM) O.C. SPACING IS STANDARD. ANCHOR SPACING WILL DEPEND ON MOUNTING SUBSTRATE AND REGION OF PROJECT

Revisions By:		
△	-	-
△	-	-
△	-	-
△	-	-

CRL

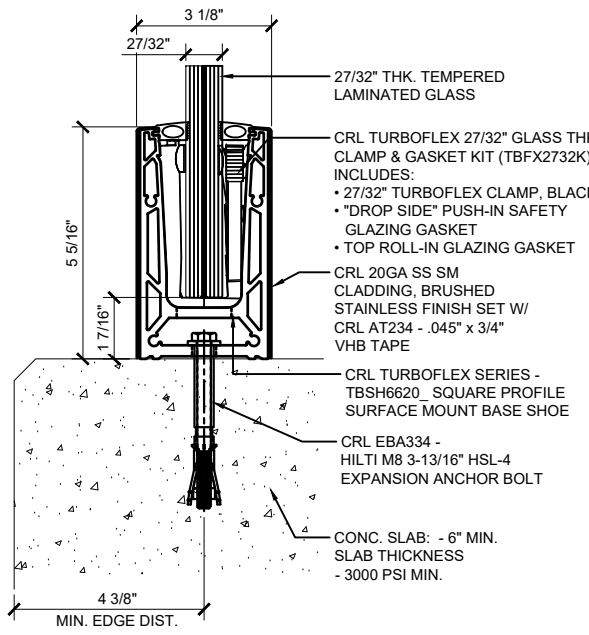
CRL LAURENCE CO. ARCHITECTURAL PRODUCTS
2500 E. Vermont Avenue, Los Angeles, CA 90058-1897
PH: (800)-421-6144 FX: (800)-987-7501 www.crlaurence.com

**TURBOFLEX
GLASS RAILING SYSTEM
FOR TEMPERED MONOLITHIC AND
LAMINATED GLASS**

**BASE SHOE OPTIONS
FASCIA MOUNT**

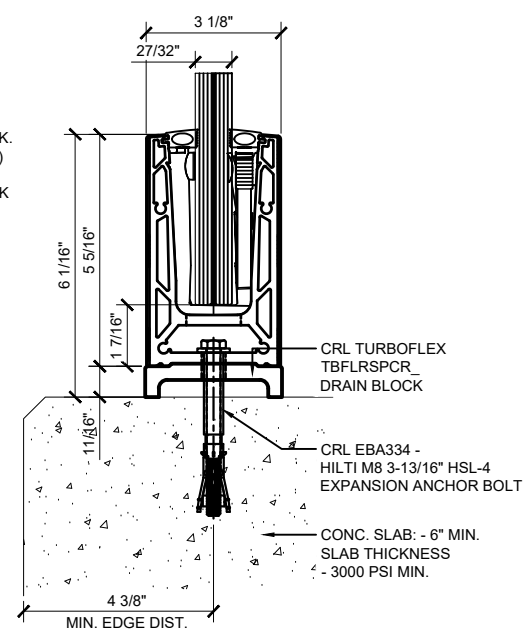
Drawn By: EDR
Date: 10/21/25
Scale: AS NOTED
File Name: SYS0133A_TURBOFLEX_GRS.dwg

TYPICAL TURBOFLEX SURFACE-MOUNT BASE SHOE ATTACHMENTS FOR 27/32" GLASS WITH STAINLESS STEEL CLADDING.



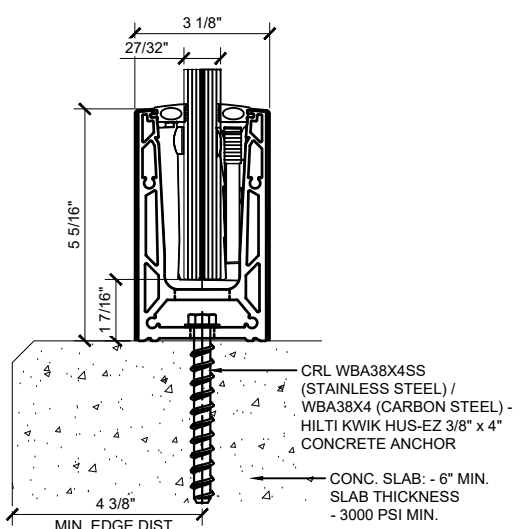
**SURFACE MOUNT DETAIL
CONCRETE SUBSTRATE**

6" AND 12" (305MM) O.C. SPACING IS STANDARD. ANCHOR SPACING WILL DEPEND ON MOUNTING SUBSTRATE AND REGION OF PROJECT



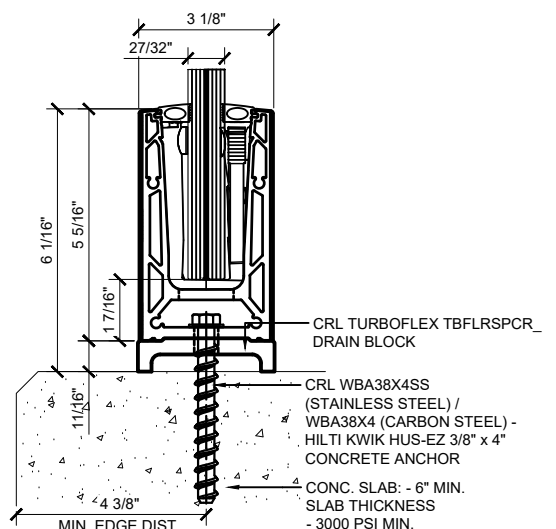
**SURFACE MOUNT DETAIL
CONCRETE SUBSTRATE W/ DRAIN BLOCK**

6" AND 12" (305MM) O.C. SPACING IS STANDARD. ANCHOR SPACING WILL DEPEND ON MOUNTING SUBSTRATE AND REGION OF PROJECT



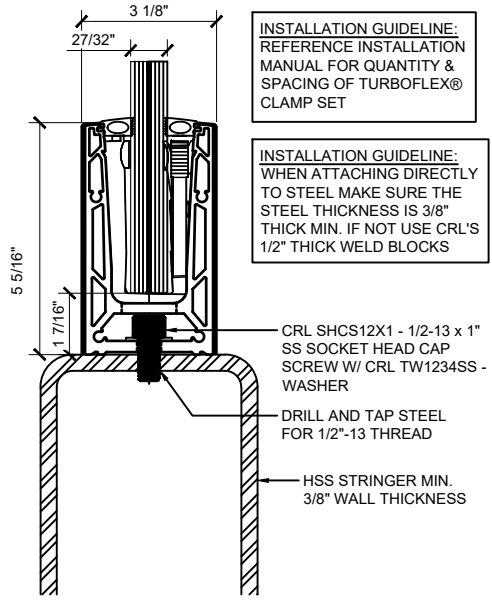
**SURFACE MOUNT DETAIL
CONCRETE SUBSTRATE**

6" AND 12" (305MM) O.C. SPACING IS STANDARD. ANCHOR SPACING WILL DEPEND ON MOUNTING SUBSTRATE AND REGION OF PROJECT



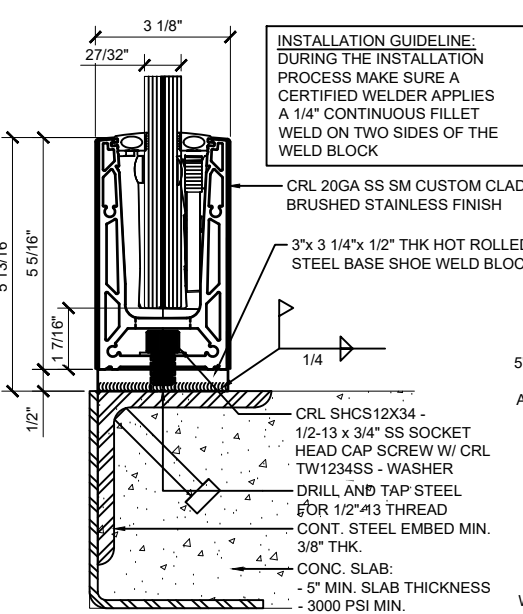
**SURFACE MOUNT DETAIL
CONCRETE SUBSTRATE W/ DRAIN BLOCK**

6" AND 12" (305MM) O.C. SPACING IS STANDARD. ANCHOR SPACING WILL DEPEND ON MOUNTING SUBSTRATE AND REGION OF PROJECT



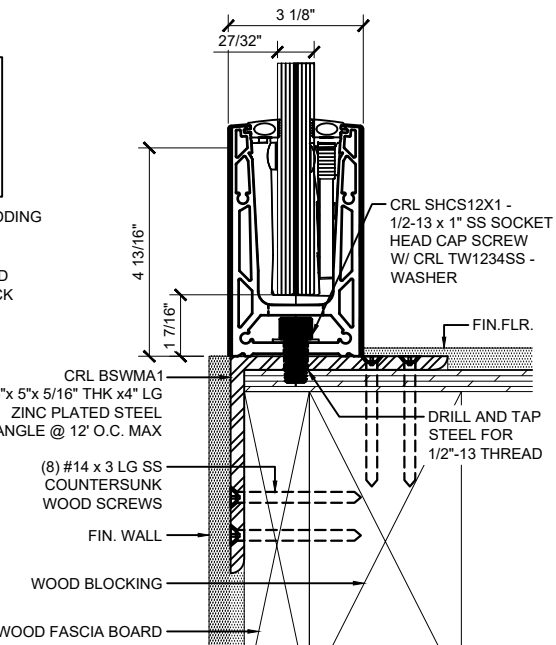
**SURFACE MOUNT DETAIL
STEEL SUBSTRATE**

6" AND 12" (305MM) O.C. SPACING IS STANDARD. ANCHOR SPACING WILL DEPEND ON MOUNTING SUBSTRATE AND REGION OF PROJECT



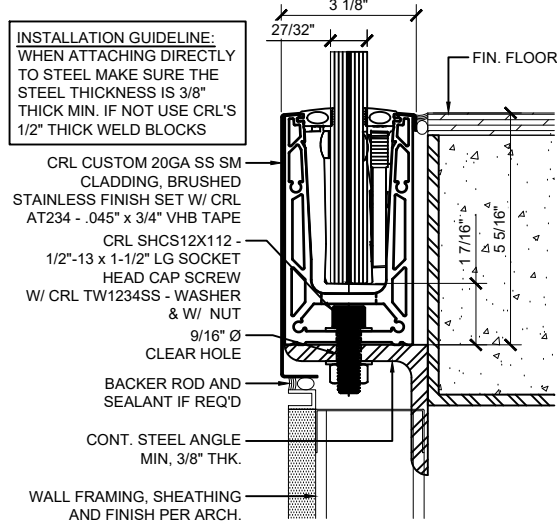
**SURFACE MOUNT DETAIL
STEEL SUBSTRATE W/ WELD BLOCK**

6" AND 12" (305MM) O.C. SPACING IS STANDARD. ANCHOR SPACING WILL DEPEND ON MOUNTING SUBSTRATE AND REGION OF PROJECT



**SURFACE MOUNT DETAIL
WOOD SUBSTRATE**

6" AND 12" (305MM) O.C. SPACING IS STANDARD. ANCHOR SPACING WILL DEPEND ON MOUNTING SUBSTRATE AND REGION OF PROJECT



**SURFACE MOUNT DETAIL
STEEL SUBSTRATE W/ CUSTOM CLADDING**

6" AND 12" (305MM) O.C. SPACING IS STANDARD. ANCHOR SPACING WILL DEPEND ON MOUNTING SUBSTRATE AND REGION OF PROJECT

INSTALLATION GUIDELINE:
REFERENCE INSTALLATION MANUAL FOR QUANTITY & SPACING OF TURBOFLEX® CLAMP SET

INSTALLATION GUIDELINE:
WHEN ATTACHING DIRECTLY TO STEEL MAKE SURE THE STEEL THICKNESS IS 3/8" THICK MIN. IF NOT USE CRL'S 1/2" THICK WELD BLOCKS

INSTALLATION GUIDELINE:
DURING THE INSTALLATION PROCESS MAKE SURE A CERTIFIED WELDER APPLIES A 1/4" CONTINUOUS FILLET WELD ON TWO SIDES OF THE WELD BLOCK

INSTALLATION GUIDELINE:
WHEN ATTACHING DIRECTLY TO STEEL MAKE SURE THE STEEL THICKNESS IS 3/8" THICK MIN. IF NOT USE CRL'S 1/2" THICK WELD BLOCKS

Revisions By:		
△	-	-
△	-	-
△	-	-
△	-	-

CRL

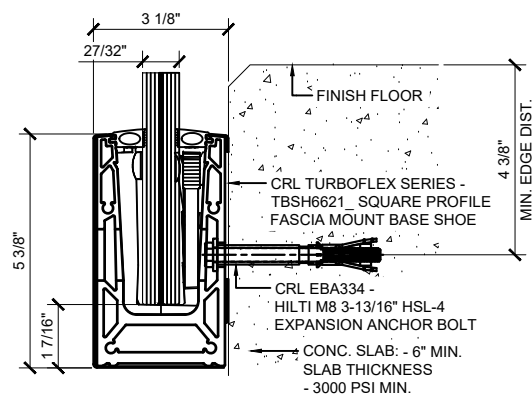
CRL LAURENCE CO. ARCHITECTURAL PRODUCTS
2500 E. Vermont Avenue, Los Angeles, CA 90058-1897
PH (800)-421-6144 FX (800)-987-7501 www.crlaurence.com

**TURBOFLEX
GLASS RAILING SYSTEM
FOR TEMPERED MONOLITHIC AND
LAMINATED GLASS**

**BASE SHOE OPTIONS
SURFACE MOUNT**

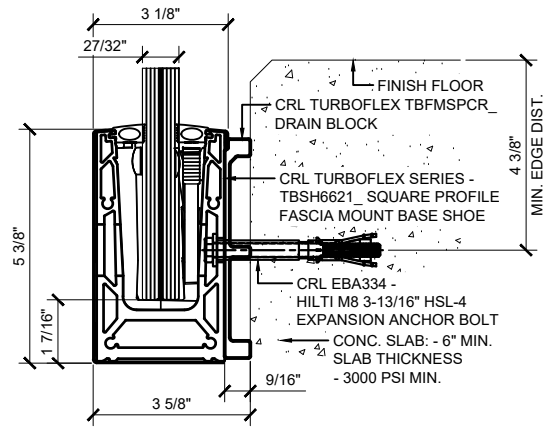
Drawn By: EDR
Date: 10/21/25
Scale: AS NOTED
File Name: SYS0133A_TURBOFLEX_GRS.dwg

TYPICAL TURBOFLEX FASCIA-MOUNT BASE SHOE ATTACHMENTS FOR 27/32" GLASS WITH STAINLESS STEEL CLADDING.



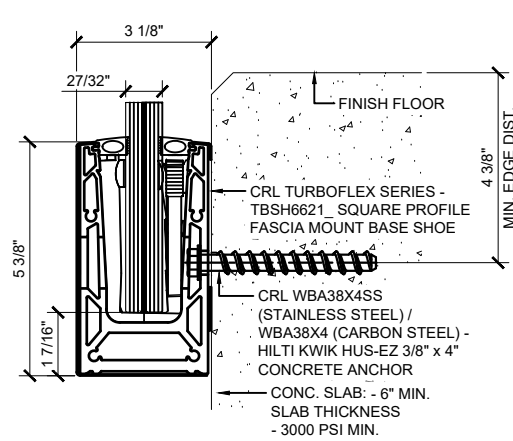
**FASCIA MOUNT DETAIL
CONCRETE SUBSTRATE**

6" AND 12" (305MM) O.C. SPACING IS STANDARD. ANCHOR SPACING WILL DEPEND ON MOUNTING SUBSTRATE AND REGION OF PROJECT



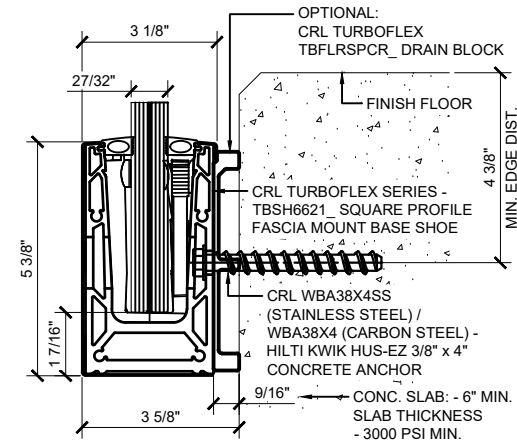
**FASCIA MOUNT DETAIL CONCRETE
SUBSTRATE W/ DRAIN BLOCK**

6" AND 12" (305MM) O.C. SPACING IS STANDARD. ANCHOR SPACING WILL DEPEND ON MOUNTING SUBSTRATE AND REGION OF PROJECT



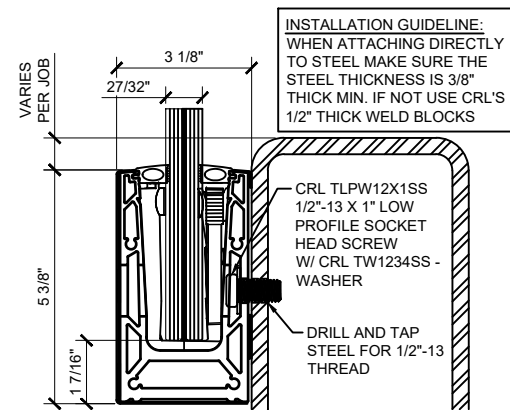
**FASCIA MOUNT DETAIL
CONCRETE SUBSTRATE**

6" AND 12" (305MM) O.C. SPACING IS STANDARD. ANCHOR SPACING WILL DEPEND ON MOUNTING SUBSTRATE AND REGION OF PROJECT



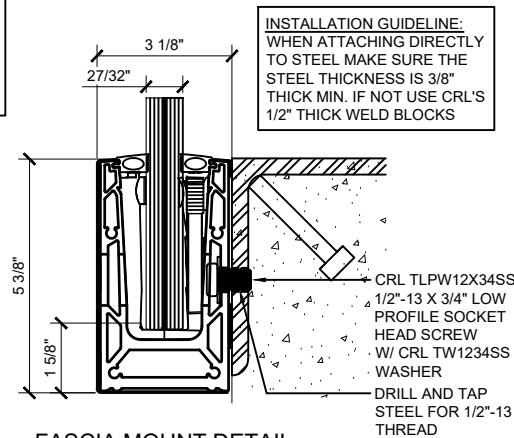
**FASCIA MOUNT DETAIL
CONCRETE SUBSTRATE W/ DRAIN BLOCK**

6" AND 12" (305MM) O.C. SPACING IS STANDARD. ANCHOR SPACING WILL DEPEND ON MOUNTING SUBSTRATE AND REGION OF PROJECT



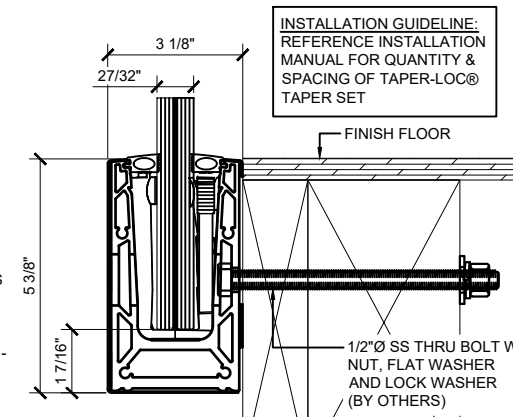
**FASCIA MOUNT DETAIL
STEEL SUBSTRATE**

6" AND 12" (305MM) O.C. SPACING IS STANDARD. ANCHOR SPACING WILL DEPEND ON MOUNTING SUBSTRATE AND REGION OF PROJECT



**FASCIA MOUNT DETAIL
STEEL SUBSTRATE**

6" AND 12" (305MM) O.C. SPACING IS STANDARD. ANCHOR SPACING WILL DEPEND ON MOUNTING SUBSTRATE AND REGION OF PROJECT



**FASCIA MOUNT DETAIL
WOOD SUBSTRATE**

6" AND 12" (305MM) O.C. SPACING IS STANDARD. ANCHOR SPACING WILL DEPEND ON MOUNTING SUBSTRATE AND REGION OF PROJECT

Revisions By:

△	-	-
△	-	-
△	-	-
△	-	-

CRL

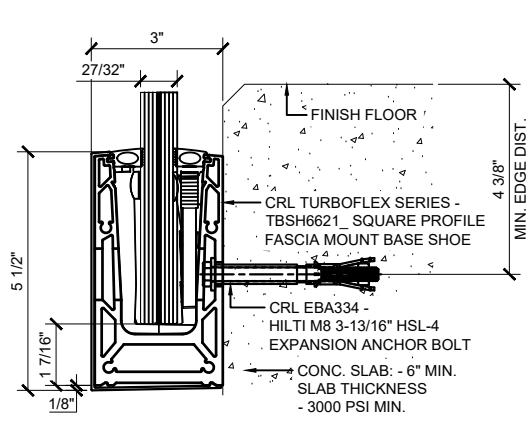
CRL LAURENCE CO. ARCHITECTURAL PRODUCTS
2500 E. Vermont Avenue, Los Angeles, CA 90058-1897
PH: (800)-421-6144 FX: (800)-987-7501 www.crlaurence.com

**TURBOFLEX
GLASS RAILING SYSTEM
FOR TEMPERED MONOLITHIC AND
LAMINATED GLASS**

**BASE SHOE OPTIONS
FASCIA MOUNT**

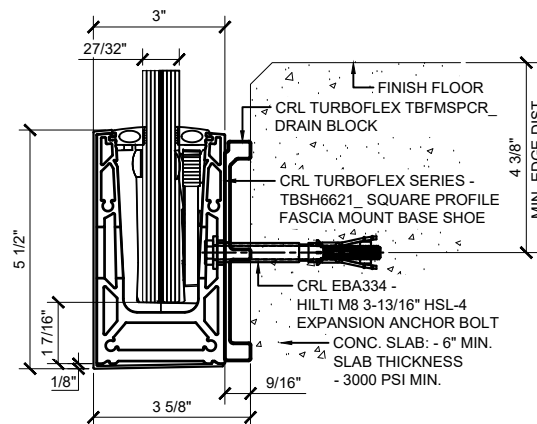
Drawn By: EDR
Date: 10/21/25
Scale: AS NOTED
File Name:
SYS0133A_TURBOFLEX_GRS.dwg

TYPICAL TURBOFLEX SURFACE-MOUNT BASE SHOE ATTACHMENTS FOR 27/32" GLASS WITH SNAP-ON COVER.



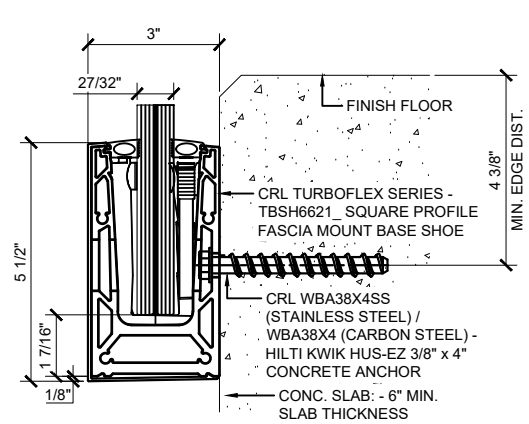
**FASCIA MOUNT DETAIL
CONCRETE SUBSTRATE**

6" AND 12" (305MM) O.C. SPACING IS STANDARD. ANCHOR SPACING WILL DEPEND ON MOUNTING SUBSTRATE AND REGION OF PROJECT



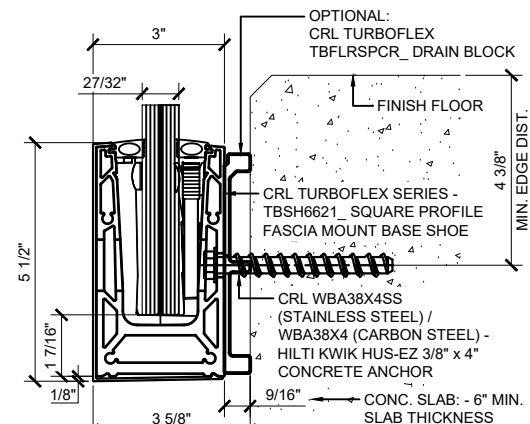
**FASCIA MOUNT DETAIL CONCRETE
SUBSTRATE W/ DRAIN BLOCK**

6" AND 12" (305MM) O.C. SPACING IS STANDARD. ANCHOR SPACING WILL DEPEND ON MOUNTING SUBSTRATE AND REGION OF PROJECT



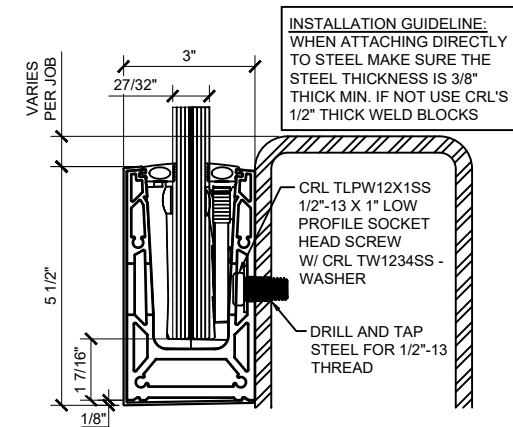
**FASCIA MOUNT DETAIL
CONCRETE SUBSTRATE**

6" AND 12" (305MM) O.C. SPACING IS STANDARD. ANCHOR SPACING WILL DEPEND ON MOUNTING SUBSTRATE AND REGION OF PROJECT



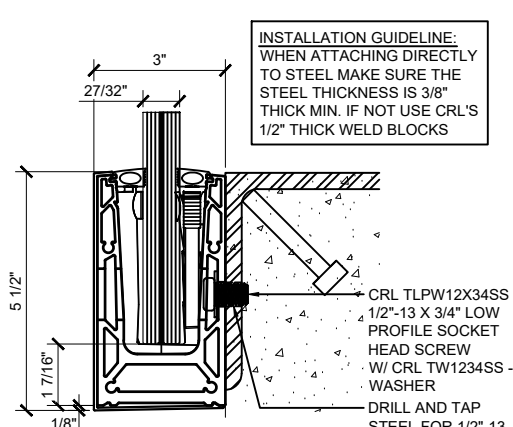
**FASCIA MOUNT DETAIL
CONCRETE SUBSTRATE W/ DRAIN BLOCK**

6" AND 12" (305MM) O.C. SPACING IS STANDARD. ANCHOR SPACING WILL DEPEND ON MOUNTING SUBSTRATE AND REGION OF PROJECT



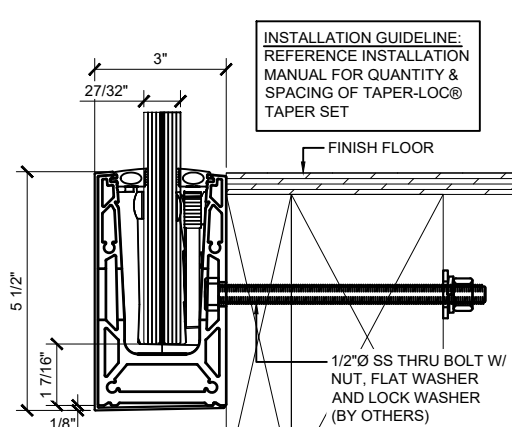
**FASCIA MOUNT DETAIL
STEEL SUBSTRATE**

6" AND 12" (305MM) O.C. SPACING IS STANDARD. ANCHOR SPACING WILL DEPEND ON MOUNTING SUBSTRATE AND REGION OF PROJECT



**FASCIA MOUNT DETAIL
STEEL SUBSTRATE**

6" AND 12" (305MM) O.C. SPACING IS STANDARD. ANCHOR SPACING WILL DEPEND ON MOUNTING SUBSTRATE AND REGION OF PROJECT



**FASCIA MOUNT DETAIL
WOOD SUBSTRATE**

6" AND 12" (305MM) O.C. SPACING IS STANDARD. ANCHOR SPACING WILL DEPEND ON MOUNTING SUBSTRATE AND REGION OF PROJECT

Revisions By:

△	-	-
△	-	-
△	-	-
△	-	-
△	-	-

CRL

CRL LAURENCE CO. ARCHITECTURAL PRODUCTS
2500 E. Vermont Avenue, Los Angeles, CA 90058-1897
PH: (800)-421-6144 FX: (800)-987-7501 www.crlaurence.com

Description:
**TURBOFLEX
GLASS RAILING SYSTEM
FOR TEMPERED MONOLITHIC AND
LAMINATED GLASS**

BASE SHOE OPTIONS
FASCIA MOUNT

Drawn By: EDR
Date: 10/21/25
Scale: AS NOTED
File Name:
SYS0133A_TURBOFLEX_GRS.dwg

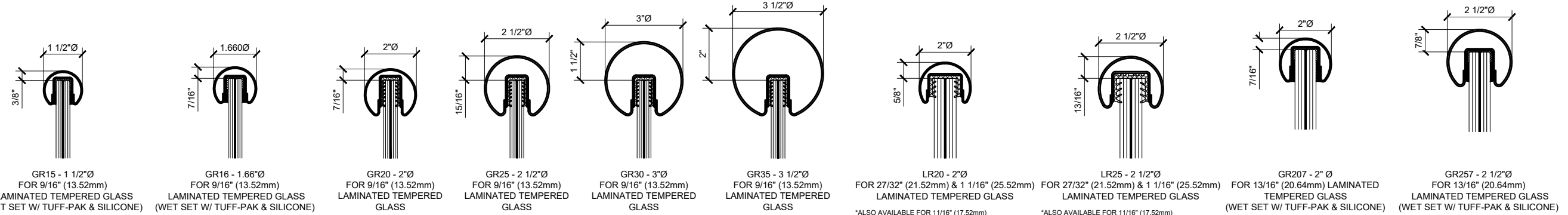
Sheet
24

Revisions By:

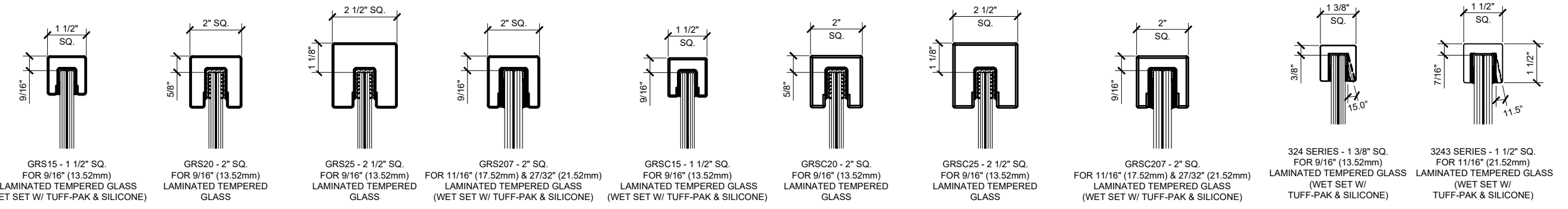
△	-	-
△	-	-
△	-	-
△	-	-

CRL

C.R. LAURENCE CO. ARCHITECTURAL PRODUCTS
2500 E. Vermont Avenue, Los Angeles, CA 90058-1897
PH (800)-421-6144 FX (800)-987-7301 www.crlaurence.com



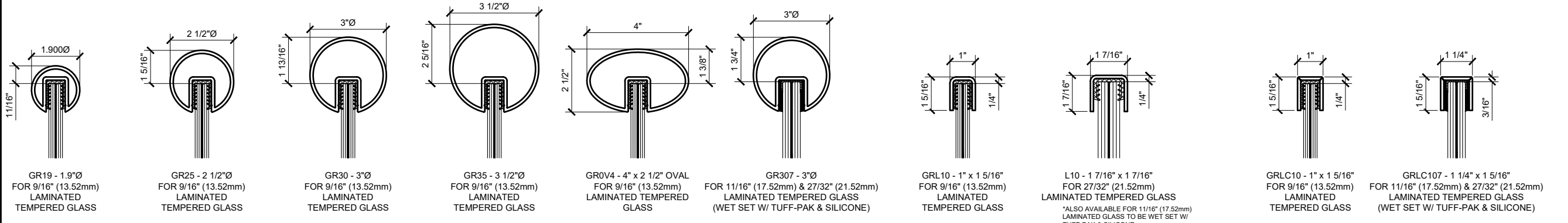
BUMP-FORMED & WELDED PREMIUM RADIUS PROFILE CAP RAIL



BUMP-FORMED & WELDED PREMIUM SQUARE PROFILE CAP RAIL

SQUARE PROFILE CRISP CORNER CAP RAIL

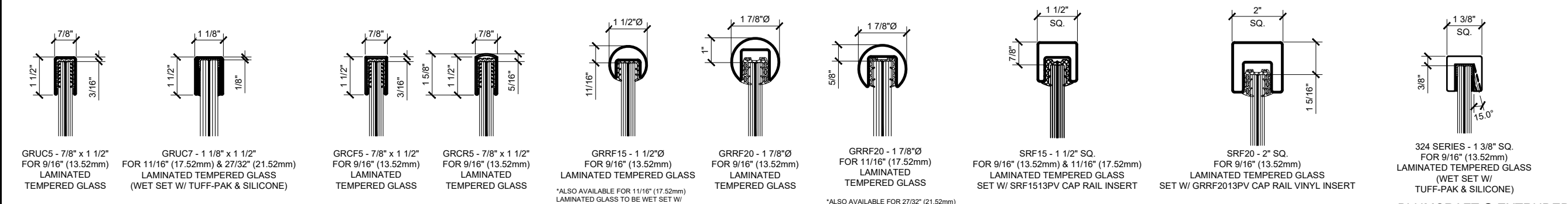
BLUMCRAFT® EXTRUDED SOLID ALUM. CAP RAIL



EXTRUDED ALUMINUM CAP RAIL

LOW PROFILE 11 GAUGE CAP RAIL

LOW PROFILE 11 GAUGE CRISP CORNER CAP RAIL



U-CHANNEL 18 GAUGE CAP RAIL

U-CHANNEL 18 GAUGE CRISP CORNER CAP RAIL

ROLL-FORMED CAP RAIL

BLUMCRAFT® EXTRUDED SOLID ALUM. CAP RAIL

Description:
TURBOFLEX
GLASS RAILING SYSTEM
FOR TEMPERED MONOLITHIC AND
LAMINATED GLASS

CAP RAIL OPTIONS

Drawn By: EDR
Date: 10/21/25
Scale: AS NOTED
File Name:
SYS0133A_TURBOFLEX_GRS.dwg

Sheet