

# Entice® HP+ Entrance and Storefront System



## The Pinnacle of Aesthetics and Performance

Expand design possibilities without sacrificing performance. The award-winning Entice® HP+ Entrance and Storefront System is available with matching sidelites and transom, delivering a cohesive, high-performance solution with stunning visual impact. Monumental glass doors spanning 10 feet tall and 4 feet wide can be specified with ultra-narrow 1- 5/8" stiles to convey a grand entrance and heavy-glass visuals.

As an AAMA CW Performance Class rated system with 1" insulating glass and a distinct full perimeter seal, Entice HP+ offers year-round, all-weather performance that asserts its status as a next-generation glass entrance and storefront system.



# Entice® HP+ Features and Benefits

The cutting edge Entice HP+ Glass Entrance and Storefront System combines visual appeal with a myriad of high-performance details to set the new standard in glass entrance system design. A high OITC rating and no gaps around doors effectively mitigates exterior sound.

### AESTHETICS


- Ultra-narrow 1-5/8" stiles
- Slim 2-7/8" system depth
- Max system height with transom: 12 feet
- Max door height: 10 feet
- Max door width: 4 feet
- Handle hardware mounts onto insulating glass
- Top rail: 4" square
- Bottom rail: 4" or 10" square
- Premium cladding in customizable finishes
- Complementary low-profile sidelites
- Compatible with bird glass

### PERFORMANCE

- AAMA CW-PG30-LW Performance Class rating
- Thermally broken stiles, jambs, and threshold
- Full perimeter seal around panels
- 1" dual-pane insulating glass
- Tested to 1,000,000 cycles
- 760 lb rated continuous gear hinge
- Design Pressure of ±30 psf (4' x 10' door)
- Vertical load resistance: Passes @ 250 lbf (4' x 10')
- Air infiltration: 0.16 cfm/ft2 @ 1.57 psf
- Aluminum 6063-T5/T6 construction
- California Title 24 compliant (glass permitting)

Standard finishes: Satin Anodized, Black Bronze Anodized, Brushed Stainless Steel, Polished Stainless Steel, Polished Brass, Matte Black Powder Coat

## Test Results



### Air Infiltration

Exceeds ASHRAE 90.1-2022 air infiltration requirements

**0.16 cfm/ft²**  
@ 1.57 psf



### Uniform Load Deflection


Meets AAMA 101 L/175 deflection criteria

Design Pressure Differential

Positive Negative

@ **30 psf** **4'x10' Door** @ **30 psf**


Refer to windload diagram and structural report



### Water Penetration

Tested to AAMA 101 in accordance with ASTM E331


**No uncontrolled water entry**  
(Limited Water Test)



### Thermal Performance

U-factor as low as 0.37

Tested in accordance with ANSI/NFRC 100-200-CMA




### Acoustic Performance

ASTM E90 and E1425

**37 STC, 32 OITC**


1/4" monolithic glass  
3/8" airspace  
3/8" laminated glass



### Life Cycle Performance

Meets AAMA 920 criteria

Tested to  
**1,000,000 cycles**



### Forced Entry Resistance

Passes AAMA-1304 @ 300 lbf with no entry

# Entice® HP+ All-Weather Performance

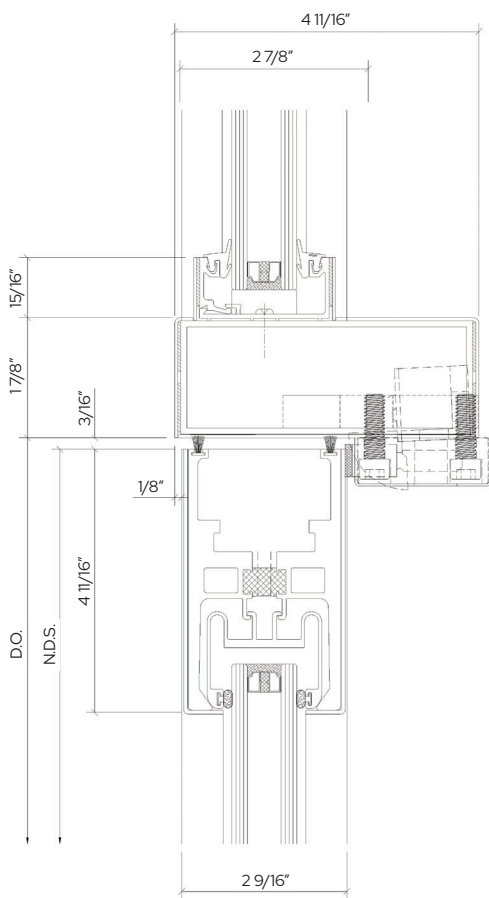
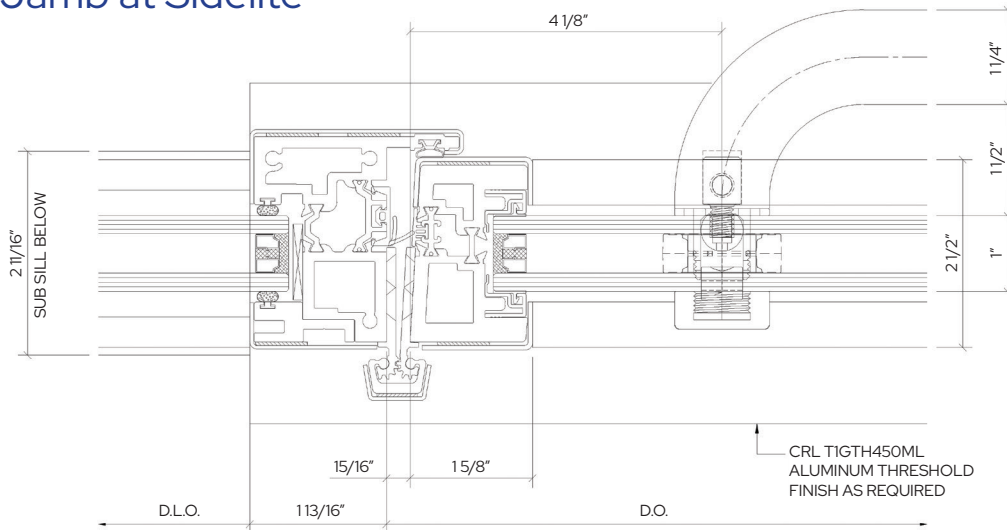


One of the key advantages of the Entice HP+ system is its ability to perform under year-round weather conditions. A full perimeter seal integrated into the framing provides superior air and water infiltration resistance. In addition, thermally broken components coupled with 1-inch insulating glass help keep interiors warm during the winter and cool during the summer to reduce energy consumption from HVAC systems.



- Full perimeter seal around panels prevents air and water infiltration
- Design Pressure of 30 psf to effectively withstand high wind loads
- Exceptional thermal performance helps maintain ideal interior temperatures
- AAMA CW Performance Class rating makes Entice HP+ well-suited for exterior applications where high loads, limits on deflection, and heavy use are expected
- Meets California Title 24 thermal performance requirements (glass permitting)

## Door Jamb at Sidelite



## Door Head at Transom

