

**TURBOFLEX**  
THE FUTURE OF GLASS RAILINGS

**CRL**



# Breakthrough Innovation, Built for the Industry

TURBOFLEX combines the best features of glass railings into one groundbreaking system. Its advanced glass securing technology offers both tilt and height adjustment, while dramatically reducing installation time. The TURBOFLEX base shoe accommodates glass thicknesses from 1/2" to 27/32" which simplifies ordering, reduces jobsite errors, and eliminates the need to stock multiple profiles.

With TURBOFLEX, structural performance is front and center. The system passed Miami-Dade HVHZ testing, which is the most stringent impact test in the nation. **Precision, speed, versatility, and rock-solid stability – that's TURBOFLEX.**

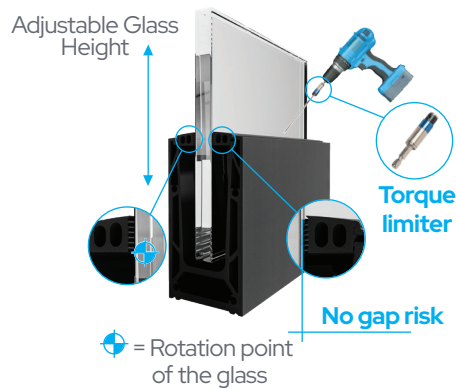


## The Complete Package

- 1. INSTALLATION:** Significantly faster to install than existing dry-glaze railing systems. No costly installation tool kits required, only an innovative mounting drill bit.
- 2. ADJUSTABILITY:** Glass securing system offers  $\pm 2$  degrees of glass tilt adjustment for a precise plumb and level.  $\pm 1/8$ " height adjusters are also available to better align glass.
- 3. VERSATILITY:** A single base shoe accommodates monolithic and laminated glass thicknesses from  $1/2$ " to  $27/32$ ". No need to stock or order multiple base shoes.
- 4. STABILITY:** Unmatched structural performance—passed Miami-Dade HVHZ testing. System features stainless steel—not plastic shims—glass clamping components.
- 5. SAFETY:** TURBOFLEX is installed from the inside, eliminating the need for scaffolding and minimizing the risk of falls.
- 6. GLASS:** Select from a variety of OBE glass options for a true one-stop shop. They include laminated glass, bird glass, tinted glass, and decorative glass.
- 7. SUSTAINABILITY:** Unique hollow-point base shoe design uses 60% less material than standard base shoes while making it much lighter to reduce shipping costs.

## First-of-its-Kind Glass Adjustment and Securing System

- 1 Position the glass to the desired angle
- 2 Secure glass with a single screw
- 3 Ready



See it in Action



# Contents

|                         |    |
|-------------------------|----|
| Installation Components | 6  |
| Top Mount System        | 8  |
| Fascia Mount System     | 14 |
| Replacement Parts       | 19 |



# Installation Components

## Glass Clamp Kits



### Kit Contains:

- 9x TURBOFLEX Clamps
- 1x Drop side gasket 10 ft
- 1x Safe side gasket 10 ft

- For glass thicknesses between 1/2" - 27/32"
- Railing length: 10 ft
- Clamps spaced 13-5/16" apart
- Offers ±2° of precise glass tilt adjustment



Works seamlessly with OBE monolithic and laminated glass options.

| Cat. No.  | Nominal |       | Range thickness |       | Interlayer |       |           |
|-----------|---------|-------|-----------------|-------|------------|-------|-----------|
|           | In.     | mm    | In.             | mm    | In.        | mm    | mm        |
| TBFX916K  | 9/16"   | 12.76 | 0.495           | 0.595 | 12.57      | 15.11 | 0.06 1.50 |
| TBFX2132K | 21/32"  | 16.76 | 0.65            | 0.71  | 16.51      | 18.03 | 0.06 1.50 |
| TBFX1116K | 11/16"  | 17.52 | 0.67            | 0.73  | 17.02      | 18.54 | 0.09 2.29 |
| TBFX1316K | 13/16"  | 20.76 | 0.77            | 0.85  | 19.56      | 21.59 | 0.06 1.50 |
| TBFX2732K | 27/32"  | 21.52 | 0.8             | 0.88  | 20.32      | 22.35 | 0.09 2.29 |

| Cat. No. | Nominal |    | Range thickness |      |       |       |
|----------|---------|----|-----------------|------|-------|-------|
|          | In.     | mm | In.             | mm   | In.   | mm    |
| TBFX12K  | 1/2"    | 12 | 0.47            | 0.51 | 11.94 | 12.95 |
| TBFX58K  | 5/8"    | 15 | 0.59            | 0.64 | 14.99 | 16.26 |
| TBFX34K  | 3/4"    | 19 | 0.73            | 0.76 | 18.54 | 19.30 |

## Torque Limiter



- TURBOFLEX mounting tool
- Limits applied torque to 53.1 in-lb or 6 Nm (+/- 10%)

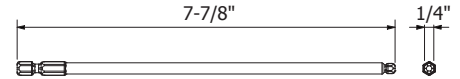
### Cat. No.

TBMTGTORQ

## Mounting Extension Rod



- Torque tool extension, for maneuvering between the glass and base shoe.



### Cat. No.

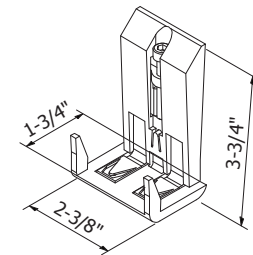
TBMTGROD

## Height Adjuster



- Height adjustment of ± 1/8"
- 1 box includes 2 adjusters

Our height adjuster ensures exact leveling of the glass panels and allows for precise height adjustment of 1/8".



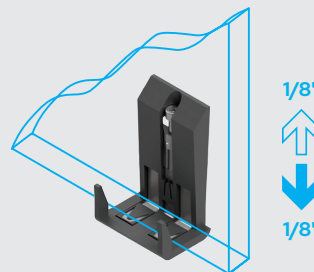
### Cat. No.

TBHTADJ

## TURBOFLEX

### Optional for TURBOFLEX: Height adjustment

- The optional height adjustment allows for precise alignment of the glass surfaces.
- The adjustment range is 1/8" per side, ensuring exact leveling of the glass panels.



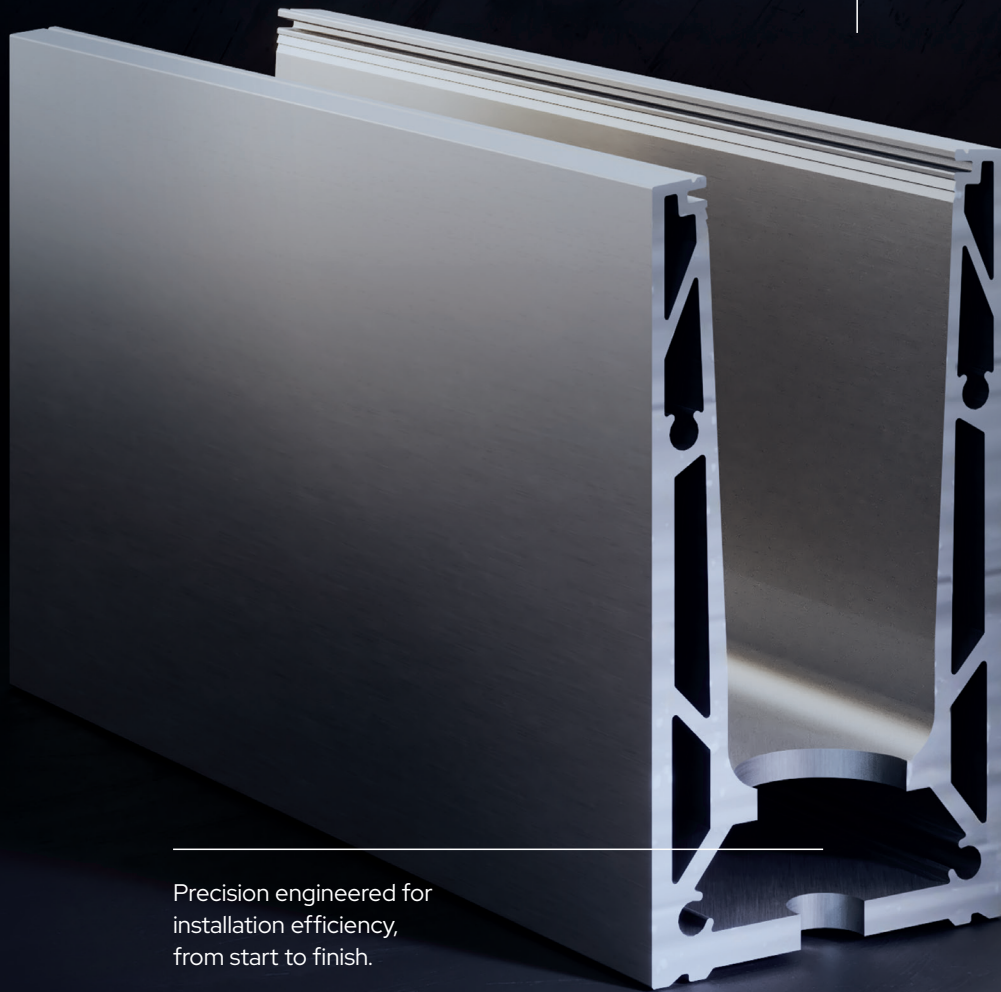


# TBSH6620

## Unparalleled

Flexibility  
Speed  
Accuracy

One shoe fits all  
Glass from 1/2" - 27/32"



Precision engineered for  
installation efficiency,  
from start to finish.



Top mount

# TURBOFLEX

\*Passed Miami-Dade  
impact testing

# Top Mounted Base Shoe

TBSH6620MLD & TBSH6620AD

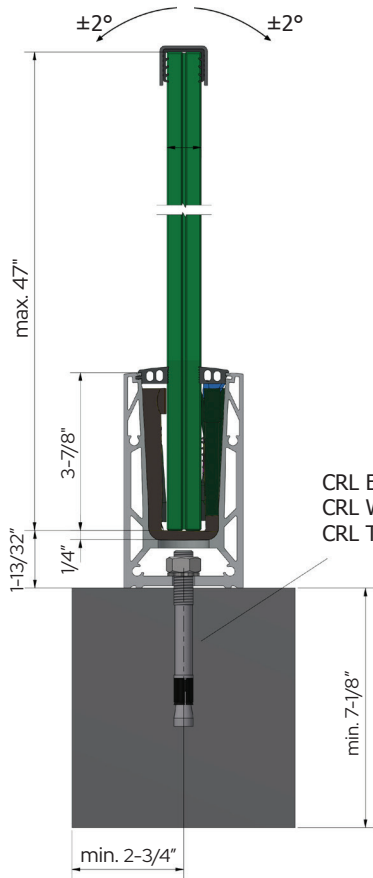
CRL's TBSH6620 Series base shoes have been specifically developed for top mount installations and can be easily secured to concrete and steel substrates with anchors listed in our accessories page below. Thanks to its intelligent design, installation is completed quickly and with perfect alignment in just a few steps. The result is not only visually impressive but also reliably meets all technical requirements.

## Essential features

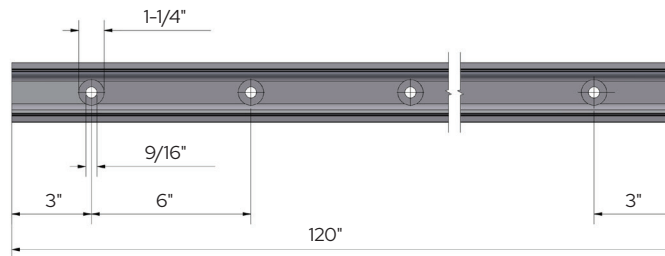
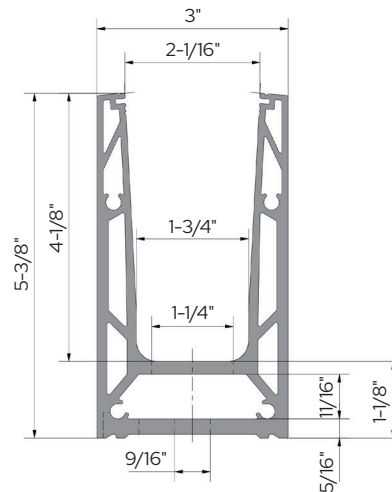
- Slimline, elegant design and low-maintenance
- Alignment pin holes
- Integrated drainage
- Cladding & end caps available in standard CRL finishes
- For glass thicknesses between 1/2" - 27/32"
- Standard installation
- Aligned by hand
- 14 mm anchor holes, with 6" center-to-center spacing
- Channeled profile spacers for quick install



**TESTED**  
according to  
**BS6180**



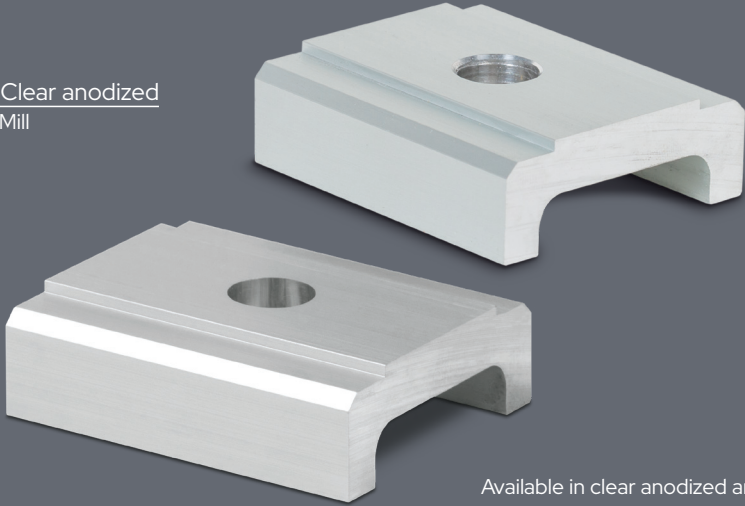
CRL EBA334  
CRL WBA38X4  
CRL TLPW12X34SS



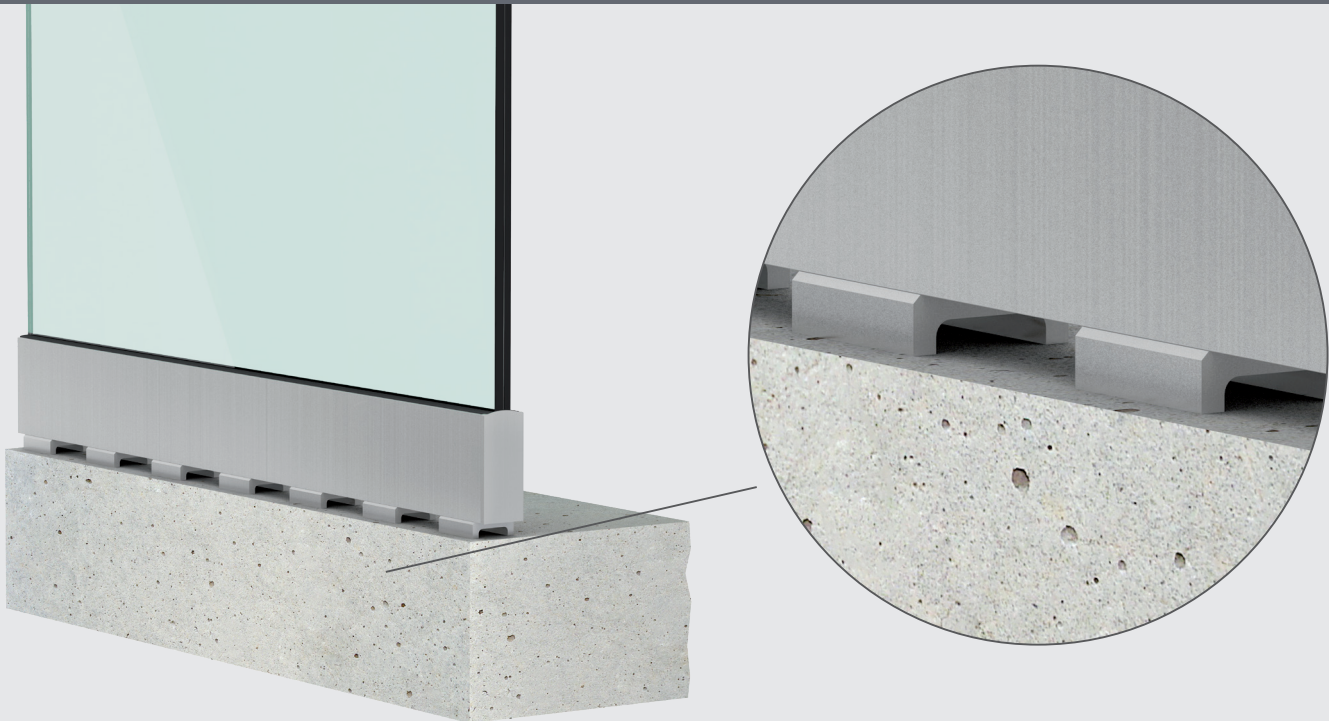
**CRL's TURBOFLEX** is engineered for performance in real-world conditions. In addition to the base shoe's integrated irrigation system, we offer profile spacers for regions that see heavier rainfall, helping promote consistent clearance and water management where you need it most.

Each box includes 10 spacers, designed to support a 10 ft base shoe length in either mill or clear anodized finishes.

TBFLRSPCRA Clear anodized  
TBFLRSPCRM Mill



Available in clear anodized and mill finishes

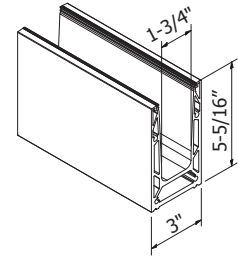


# Top Mounted Base Shoe

TBSH6620MLD & TBSH6620AD

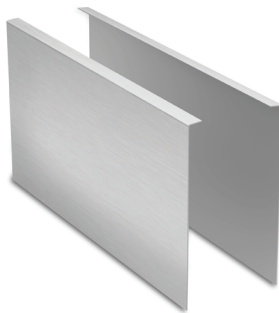


- 6063-T6 heat treated aluminum
- Pair the clear anodized shoe with our cover caps for maximum corrosion resistance

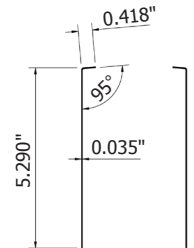


| Cat. No.    | Length | Hole Spacing | Finish         |
|-------------|--------|--------------|----------------|
| TBSH6620MLD | 10 ft  | 6" CTC       | Mill           |
| TBSH6620AD  | 10 ft  | 6" CTC       | Clear anodized |

## Cladding



- Base Shoe requires two pieces for coverage on both sides
- With mounting strips
- End caps must be ordered separately



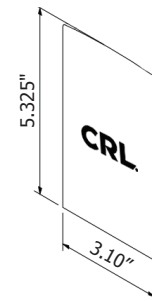
| Cat. No.     | Length | Finish             |
|--------------|--------|--------------------|
| TB6620CLADBS | 10 ft  | Brushed stainless  |
| TB6620CLADBL | 10 ft  | Matte black        |
| TB6620CLADPS | 10 ft  | Polished stainless |
| TB6620CLADPT | 10 ft  | Custom painted     |
| TB6620CLADSB | 10 ft  | Satin brass        |
| TB6620CLADPB | 10 ft  | Polished brass     |

## End Caps Left & Right



- For use with TURBOFLEX Cladding
- Sold individually

| Cat. No.  | Finish             |
|-----------|--------------------|
| TBSHTECBS | Brushed stainless  |
| TBSHTECBL | Matte black        |
| TBSHTECPS | Polished stainless |
| TBSHTECPT | Custom painted     |
| TBSHTECSB | Satin brass        |
| TBSHTECPB | Polished brass     |

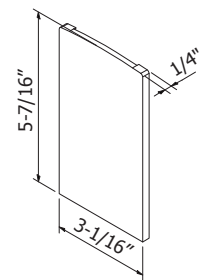


## End Caps - Aluminum



- Each purchase includes 2 end caps

| Cat. No.     | Finish         |
|--------------|----------------|
| TBSH6620ECA  | Clear anodized |
| TBSH6620ECML | Mill           |





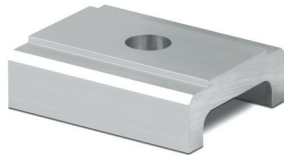
## Customizable Without Limits

Every component in the system can be tailored to your project, ensuring a perfect fit for specialized designs and environments.

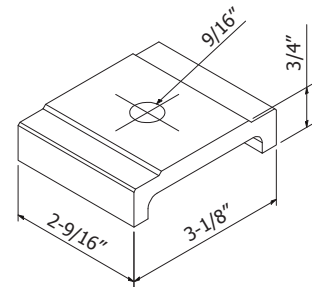
# Top Mounted Base Shoe

TBSH6620MLD & TBSH6620AD

## Profile Spacers



- Mounting hole: 9/16"
- Each box includes 10 spacers

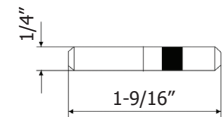


| Cat. No.    | Finish         |
|-------------|----------------|
| TBFLRSPCRML | Mill           |
| TBFLRSPCRA  | Clear anodized |

## Alignment Pins



- 316 grade stainless steel
- Each package includes 8 alignment pins



| Cat. No. |
|----------|
| TBPIN    |

## Concrete & Steel Substrate Anchors

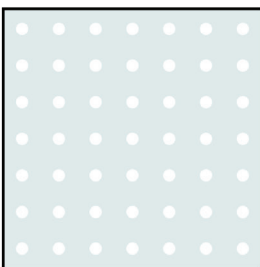


| Cat. No.    | Substrate |
|-------------|-----------|
| EBA334      | Concrete  |
| WBA38X4SS   | Concrete  |
| TLPW12X34SS | Steel     |

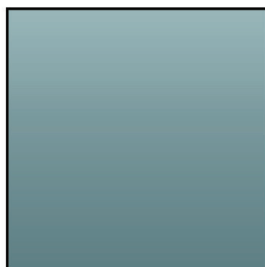
Works seamlessly with OBE monolithic and laminated glass options.



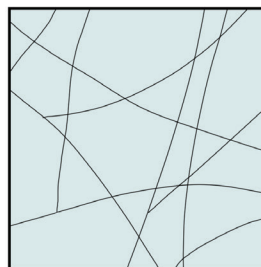
Choose from a range of OBE glass treatments—including bird-friendly patterns, subtle tints, and decorative designs—to achieve the exact aesthetic and performance your project demands.



Bird-Friendly Glass



Tinted Glass



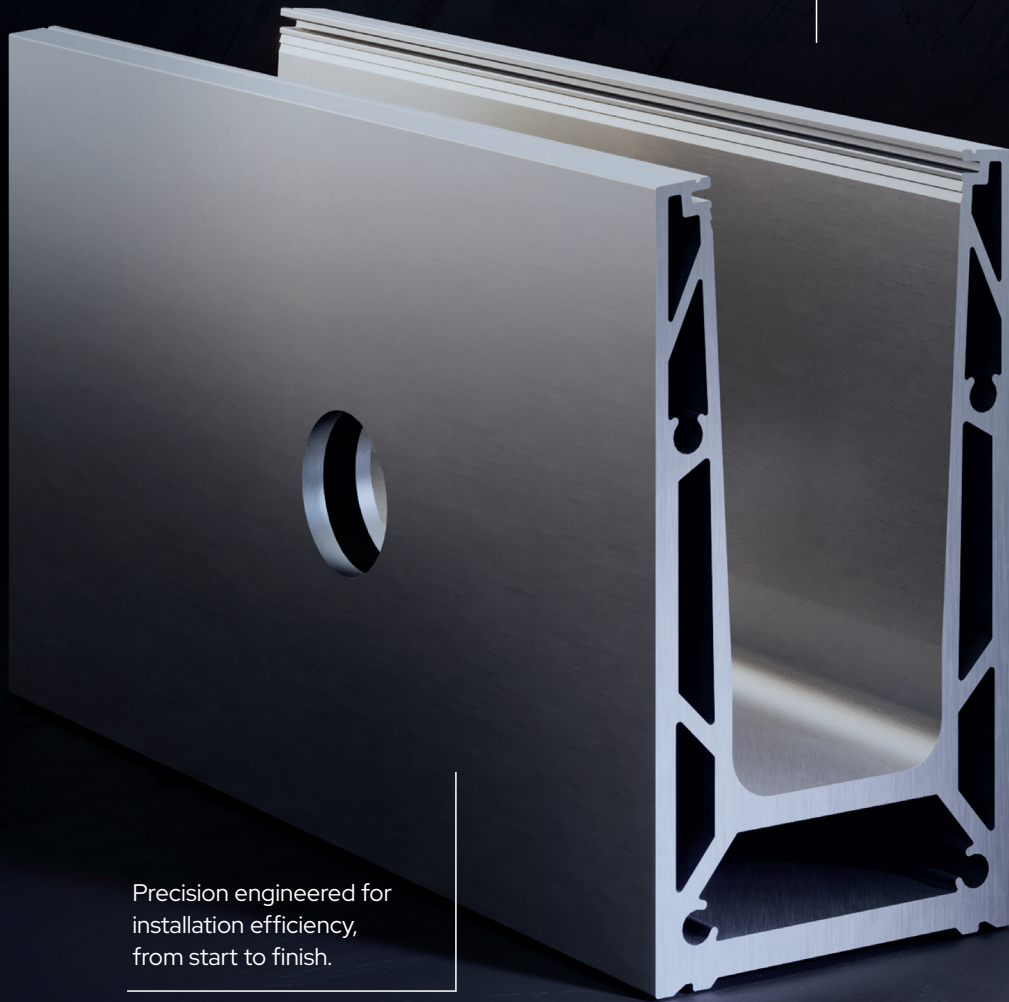
Decorative Glass

# TBSH6621

## Unparalleled

Flexibility  
Speed  
Accuracy

One shoe fits all  
Glass from 1/2" - 27/32"



Fascia

Precision engineered for  
installation efficiency,  
from start to finish.

# TURBOFLEX

\*Passed Miami-Dade  
impact testing

# Fascia Mounted Base Shoe

TBSH6621MLD & TBSH6621AD

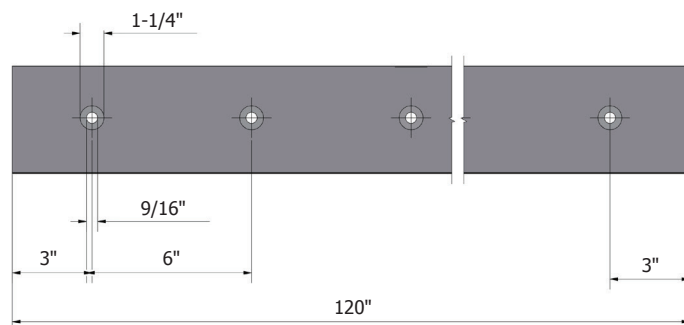
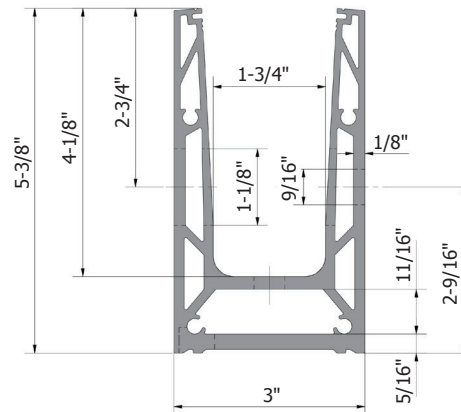
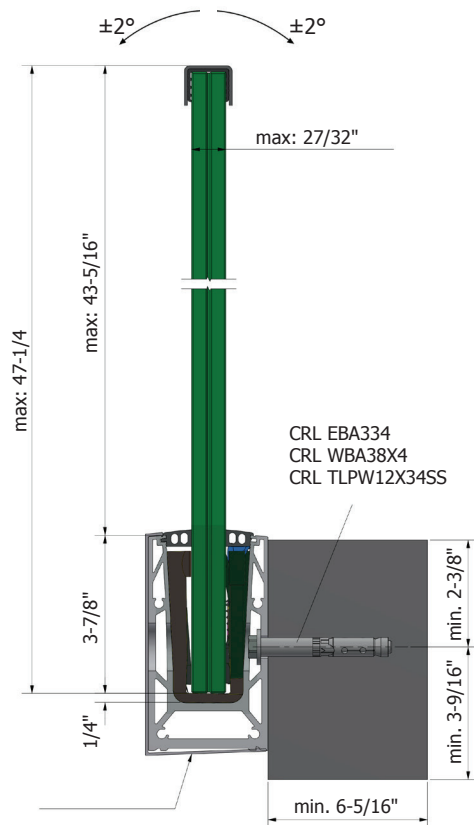
CRL's TBSH6621 Series fascia mounted base shoes have been specifically developed for fascia mounting and can be easily fixed to both concrete and steel substrates. Thanks to its intelligent design, installation is faster and perfectly aligned in just a few steps. The result is not only visually impressive but also reliably meets all technical requirements.

## Essential features

- Alignment pin holes
- Integrated drainage
- Cladding, covers & end caps available in standard CRL finishes
- For glass thicknesses between 1/2" - 27/32"
- Standard installation
- Aligned by hand
- 14 mm anchor holes, with 6" center-to-center spacing
- Innovative profile spacers designed for install after the base shoe is suspended



**TESTED**  
according to  
**BS6180**

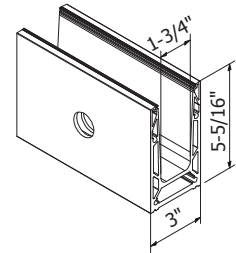


# Fascia Mounted Base Shoe

TBSH6621MLD & TBSH6621AD

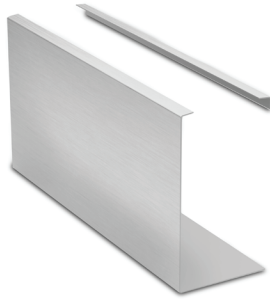


- 6063-T6 heat treated aluminum
- Pair the clear anodized shoe with our cover caps for maximum corrosion resistance



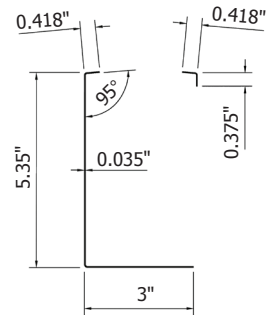
| Cat. No.    | Length | Hole Spacing | Finish         |
|-------------|--------|--------------|----------------|
| TBSH6621MLD | 10 ft  | 6" CTC       | Mill           |
| TBSH6621AD  | 10 ft  | 6" CTC       | Clear anodized |

## Cladding



- Must be ordered separately

| Cat. No.     | Length | Finish             |
|--------------|--------|--------------------|
| TB6621CLADBS | 10 ft  | Brushed stainless  |
| TB6621CLADBL | 10 ft  | Matte black        |
| TB6621CLADPS | 10 ft  | Polished stainless |
| TB6621CLADPT | 10 ft  | Custom painted     |
| TB6621CLADSB | 10 ft  | Satin brass        |
| TB6621CLADPB | 10 ft  | Polished brass     |

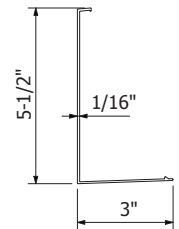


## Cover Cap



- Must be ordered separately

| Cat. No.      | Length | Finish         |
|---------------|--------|----------------|
| TBSH6621CVRML | 10 ft  | Mill           |
| TBSH6621CVRA  | 10 ft  | Clear anodized |



# Fascia Mounted Base Shoe

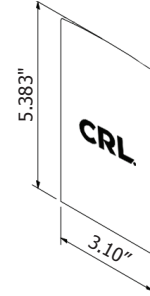
TBSH6621MLD & TBSH6621AD

## End Caps Left & Right



- For use with TURBOFLEX Cladding
- Sold individually

| Cat. No.   | Finish             |
|------------|--------------------|
| TBSHFECBS  | Brushed stainless  |
| TBSHFECBL  | Matte black        |
| TBSHFECPS  | Polished stainless |
| TBSHFECPT  | Custom painted     |
| TBSHFECBSB | Satin brass        |
| TBSHFECPB  | Polished brass     |



## End Caps Left & Right - Aluminum



### End Cap Left

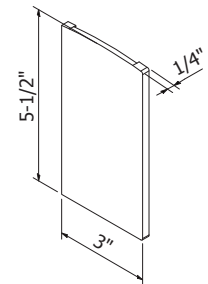
- Left end cap only

| Cat. No.      | Finish         |
|---------------|----------------|
| TBSH662IECLML | Mill           |
| TBSH662IECLA  | Clear anodized |

### End Cap Right

- Right end cap only
- Sold individually

| Cat. No.      | Finish         |
|---------------|----------------|
| TBSH662IECRML | Mill           |
| TBSH662IECRA  | Clear anodized |



## End Caps Left & Right for Cover - Aluminum

### Left End Cap For Cover

- Left end cap only
- Sold individually
- Extended end cap coverage

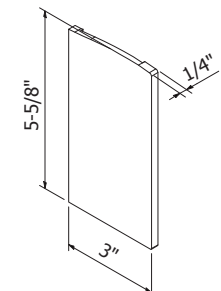
| Cat. No.     | Finish         |
|--------------|----------------|
| TBSHCVRECLML | Mill           |
| TBSHCVRECLA  | Clear anodized |



### Right End Cap For Cover

- Right end cap only
- Extended end cap coverage

| Cat. No.     | Finish         |
|--------------|----------------|
| TBSHCVRECRML | Mill           |
| TBSHCVRECRA  | Clear anodized |



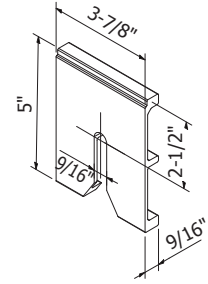
# Fascia Mounted Base Shoe

TBSH6621MLD & TBSH6621AD

## Spacer



- Each purchase includes 10 spacers
- Extended end cap coverage

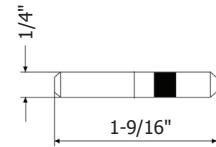


| Cat. No.   | Finish         |
|------------|----------------|
| TBFMSPCRML | Mill           |
| TBFMSPCRA  | Clear anodized |

## Alignment Pins



- 316 grade stainless steel
- Each purchase includes 8 alignment pins



| Cat. No. |
|----------|
| TBPIN    |

## Concrete & Steel Substrate Anchors



| Cat. No.    | Substrate |
|-------------|-----------|
| EBA334      | Concrete  |
| WBA38X4SS   | Concrete  |
| TLPWI2X34SS | Steel     |

# REPLACEMENT PARTS

## Replacement Clamps



- For glass thicknesses between 1/2" - 27/32"
- Clamps spaced 13-5/16" apart
- Offers ±2° of precise glass tilt adjustment

Oldcastle BuildingEnvelope®

Works seamlessly with OBE monolithic and laminated glass options.

| Cat. No. | Laminated Glass |       |                 |       |       |       |            |      |
|----------|-----------------|-------|-----------------|-------|-------|-------|------------|------|
|          | Nominal         |       | Range thickness |       |       |       | Interlayer |      |
|          | In.             | mm    | In.             | mm    | In.   | mm    | In.        | mm   |
| TBFX916  | 9/16"           | 12.76 | 0.495           | 0.595 | 12.57 | 15.11 | 0.06       | 1.50 |
| TBFX2132 | 2 1/32"         | 16.76 | 0.65            | 0.71  | 16.51 | 18.03 | 0.06       | 1.50 |
| TBFX1116 | 1 1/16"         | 17.52 | 0.67            | 0.73  | 17.02 | 18.54 | 0.09       | 2.29 |
| TBFX1316 | 1 3/16"         | 20.76 | 0.77            | 0.85  | 19.56 | 21.59 | 0.06       | 1.50 |
| TBFX2732 | 2 7/32"         | 21.52 | 0.8             | 0.88  | 20.32 | 22.35 | 0.09       | 2.29 |

| Cat. No. | Monolithic Glass |    |                 |      |       |       |  |  |
|----------|------------------|----|-----------------|------|-------|-------|--|--|
|          | Nominal          |    | Range thickness |      |       |       |  |  |
|          | In.              | mm | In.             | mm   | In.   | mm    |  |  |
| TBFX12   | 1/2"             | 12 | 0.47            | 0.51 | 11.94 | 12.95 |  |  |
| TBFX58   | 5/8"             | 15 | 0.59            | 0.64 | 14.99 | 16.26 |  |  |
| TBFX34   | 3/4"             | 19 | 0.73            | 0.76 | 18.54 | 19.30 |  |  |

## Replacement Gaskets



| Cat. No.   | Glass             |
|------------|-------------------|
| TBGSKT12   | 1/2" - 9/16"      |
| TBGSKT58   | 5/8"              |
| TBGSKT2132 | 2 1/32" - 1 1/16" |
| TBGSKT34   | 3/4"              |
| TBGSKT1316 | 1 3/16" - 2 7/32" |





**C.R. Laurence Co. Inc.**  
Corporate Headquarters  
2503 E Vernon Ave.  
Los Angeles, CA 90058

**Architect Support**  
800.458.7535  
[abd@crlaurence.com](mailto:abd@crlaurence.com)

**Purchasing Support**  
800.421.6144  
[railings.archmetals@crlaurence.com](mailto:railings.archmetals@crlaurence.com)