

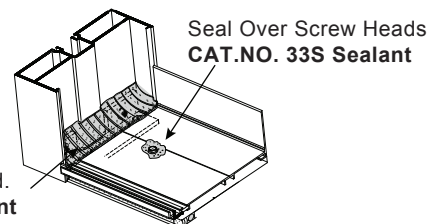
GUIDE TO SEALANTS (7200 Series Window)

WATERPROOFING

- **33S ACETIC CURE SILICONE**

NOTE: Not for use near insulated glass units with butyl sealant.

Fill with Sealant to Create a Water Shed.
CAT.NO. 33S Sealant

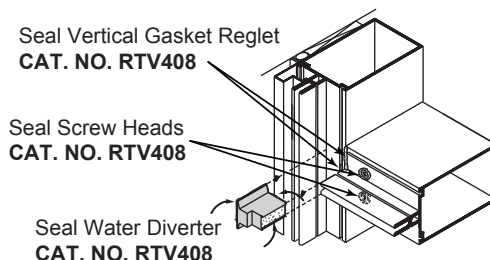
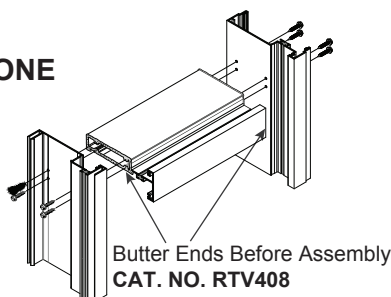


Sill to Subsill, End Dams, Screw Heads and Threshold to Door Frame Sealing.

JOINT ADHESIVE

- **RTV408 NEUTRAL CURE SILICONE**

NOTE: I.G. butyl contact OK.



Small Joints, End Joints and Buttered Surfaces, Water Diverter and Reglet Fills.

PERIMETER

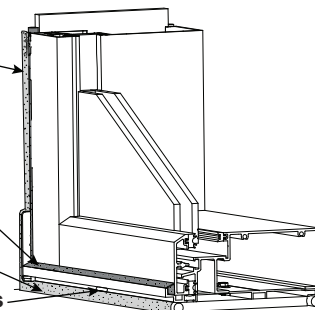
- **95C NEUTRAL CURE SILICONE**
- **M64 (SMOOTH) MODIFIED POLYURETHANE**
- **M66 (TEXTURED) MODIFIED POLYURETHANE**

Exterior Perimeter Caulking
CAT. NO. 95C/M64/M66

Waterproofing
Silicone Sealant
CAT. NO. 33S/RTV408

Exterior Perimeter Caulking
CAT. NO. 95C/M64/M66

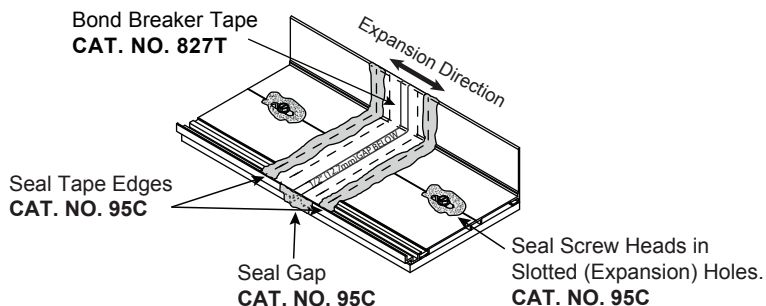
Do Not Block Weepholes



Perimeter Seals, Expansion Joints, Sill and Threshold Beds, Concrete, Wood and Steel Openings.

EXPANSION

- **95C NEUTRAL CURE SILICONE**



Expansion Joints.

STRUCTURAL

- **ALL STRUCTURAL SEALANTS REQUIRE TESTING AND APPROVAL.**

Glass to Glass or Glass to Metal.