

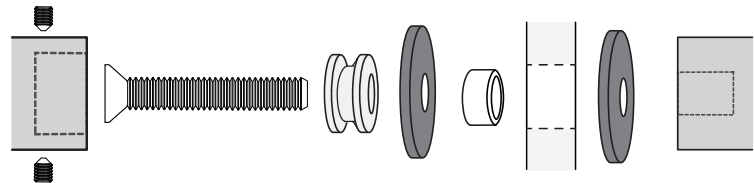
CRL ALUMINUM DOOR MOUNTED STANDARD PULL HANDLES

CRL GLASS MOUNTED SQUARE LADDER STYLE PULL HANDLE WITH SQUARE MOUNTING POSTS



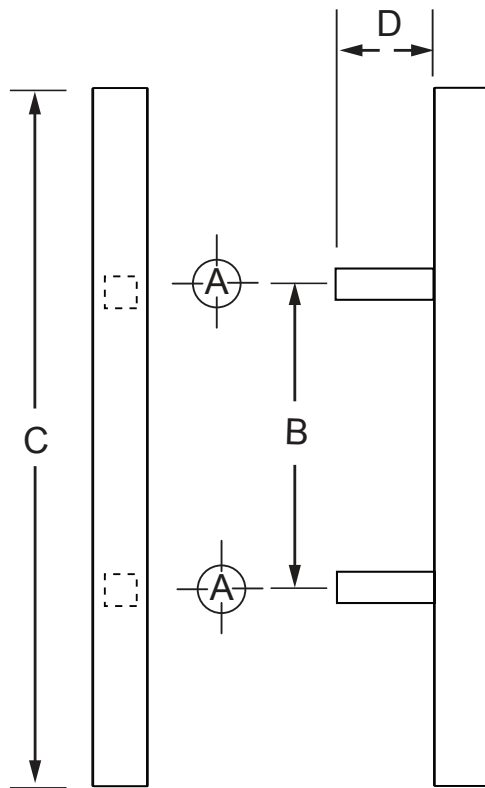
CAT. NO.
 24SQSLP
 36SQSLP
 48SQSLP
 60SQSLP

INCLUDED MOUNTING HARDWARE



5/16"-18 Back-to-Back
 Glass Door Mount Shown

MOUNTING TEMPLATE



ADD TO CAT. NO. FOR FINISH

BS = BRUSHED STAINLESS

PS = POLISHED STAINLESS

CAT. NO.	Hole Size: A	B	C	D
	Glass			
24SQSLP	5/8" (16 mm)	12" (305 mm)	24" (610 mm)	3-1/16" (79 mm)
36SQSLP	5/8" (16 mm)	24 (610 mm)	36" (914 mm)	3-1/16" (79 mm)
48SQSLP	5/8" (16 mm)	36 (914 mm)	48 (1219 mm)	3-1/16" (79 mm)
60SQSLP	5/8" (16 mm)	48" (1219 mm)	60" (1524 mm)	3-1/16" (79 mm)

Mounting Options	Glass 3/8"-3/4" (10-19 mm)	Wood/Aluminum up to 1-3/4" (45 mm)
Mounting Hardware	F40WK Included	Cat. No. TB4CH

NOTE: Optional hardware kits must be purchased separately.

