

## Sliding Door Technology in Motion

690/695 Series doors are the latest advancement in CRL's expansive line of sliding glass panel systems. They offer an improved sliding component with a reduced opening force for smooth, quiet, and effortless operation. Glass panel heights can also be adjusted 1/4" in either direction for easier alignment.

The 695 Series slider utilizes an advanced soft-brake body. By reducing the double soft-brake system from two bodies to one, the sliding mechanism is scaled down to a robust 16-15/16" length. In addition, no extra piston is required to absorb impact, resulting in simplified installation and enhanced durability.



# CRL | 690/695 Features and Benefits

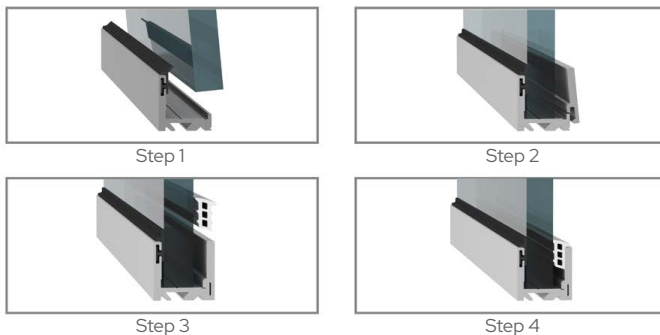
Visually, 690/695 Series sliders feature ultra-narrow 2-1/2" tall headers that reduce visible hardware to create expansive, all-glass aesthetics. An optional grid system is also available for a distinct industrial look and added design flexibility. Other benefits include:

- Reduced opening force on 695 Series
- Easy to install sidelite channel track
- 695 features a single soft-brake body with no extra piston required
- Tested to 200,000 cycles
- 1/4" door height adjustment
- Slim 2-1/2" overhead track height
- No glass drilling required
- 3 activators for height regulation on 695 Series
- 695 min door width: 34-1/4"
- Max door height: 118"
- Max door weight: 330 lb
- For 3/8" to 1/2" monolithic tempered glass
- Wall/glass mount, ceiling mount, and drop ceiling mount kits available



## 695 Soft-Brake Body

A single soft-brake body instead of two for dual closing decreases its length, which improves durability and reduces the minimum glass panel width.



## New Sidelite Channel Track

The new easy-to-install bottom channel track is dry-glazed and uses a smart snap-on system to secure sidelites in place quickly and with minimal labor. Unlike wet-glaze u-channels, the 690/695 snap-on system allows simplified adjustment or replacement of glass panels.



## Premium Grid System

The 690/695 Series is available with a stick-on aluminum grid system for greater design flexibility. Grid strips are cut to desired length and applied to the glass horizontally or vertically.

**Standard Finishes:** Matte Black, Brushed Stainless Anodized, Satin Anodized