



SERIES 400 CENTER / INTERIOR GLAZED SHEAR BLOCK STOREFRONT SYSTEM

Technical drawing of a window unit, likely a curtain wall or large window assembly, showing dimensions and callouts.

Dimensions:

- Overall Width: 151 3/4" RO
- Overall Height: 120 3/8" RO
- Top Section Height: 3/8" MIN JOINT
- Bottom Section Height: 3/4" MIN JOINT
- Left Section Width: 31 1/4" DLO
- Middle Section Width: 48" DLO
- Right Section Width: 48" DLO
- Top Section Width: 151" FD
- Bottom Section Width: 119 1/4" FD
- Vertical Spacing: 82 3/4" DLO, 31 1/4" DLO
- Horizontal Spacing: 1 3/4", 1 3/4", 1 3/4", 1 3/4"

Callouts:

- 1: 1 3/4" x 4 1/2" FRAMING
- 2: 2 PIECE
- 3: HOLLOW
- 4: 1 3/4" x 4 1/2" FRAMING
- 5: 1 3/4" x 4 1/2" FRAMING
- 6: 1 3/4" x 4 1/2" FRAMING
- SUPPORTS 1/4" GLAZING STANDARD

151 3/4" RO

151" FD

3/8" MIN JOINT

48" DLO

48" DLO

48" DLO

1 3/4"

1 3/4"

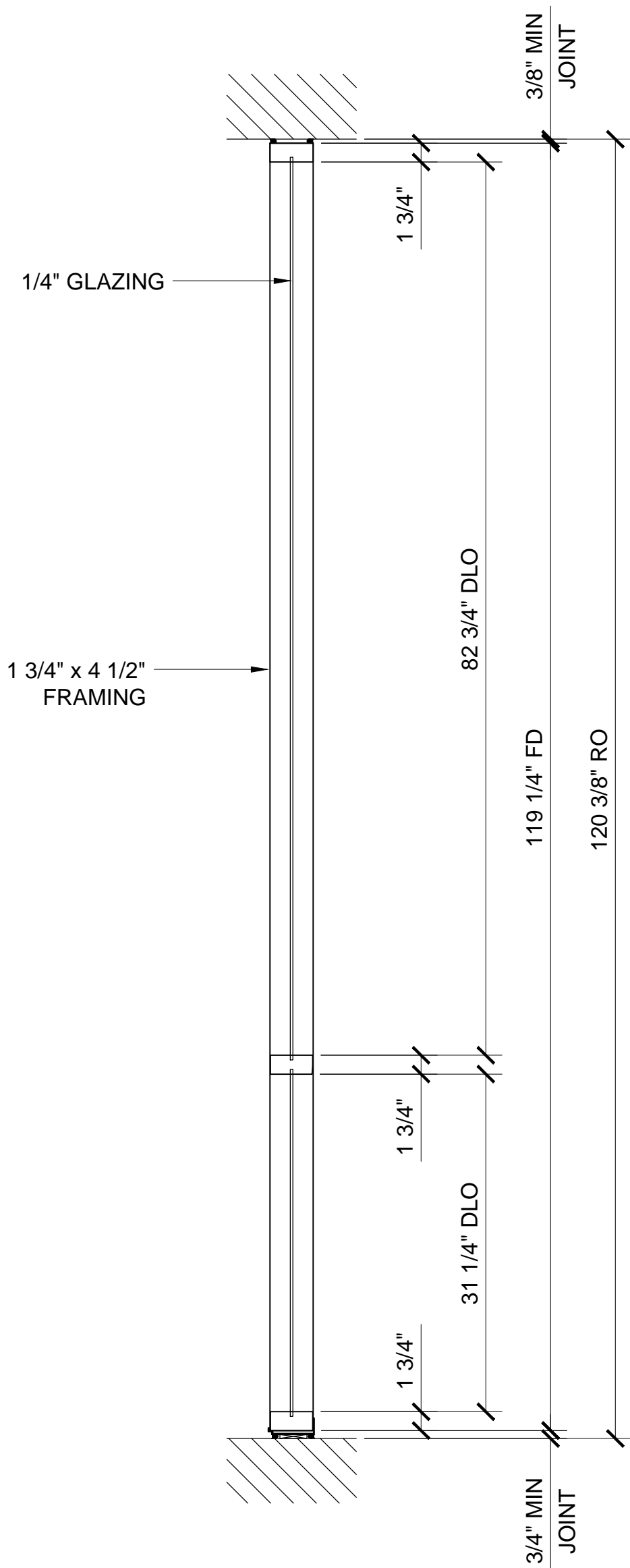
1 3/4"

1 3/4"

1/4" GLAZING

1 3/4" x 4 1/2" FRAMING

1 3/4" x 4" frame
1/4" Glazing infill
Full range of accessory components
Available in an array of architectural coatings and anodized finishes
Screw spline assembly
Shear block assembly (SHOWN)
Stacking installation option
Interior or Exterior Glazed (INTERIOR GLAZED OPTION SHOWN)



RO	ROUGH OPENING
FD	FRAME DIMENSION
DLO	DAYLITE OPENING
DO	DOOR OPENING
DD	DOOR DIMENSION
SMC	SURFACE MOUNTED CLOSER
OHCC	OVERHEAD CONCEALED CLOSER

Revisions By:



Description:
U.S. ALUMINUM
SERIES 400 CENTER GLAZED
STOREFRONT SYSTEM

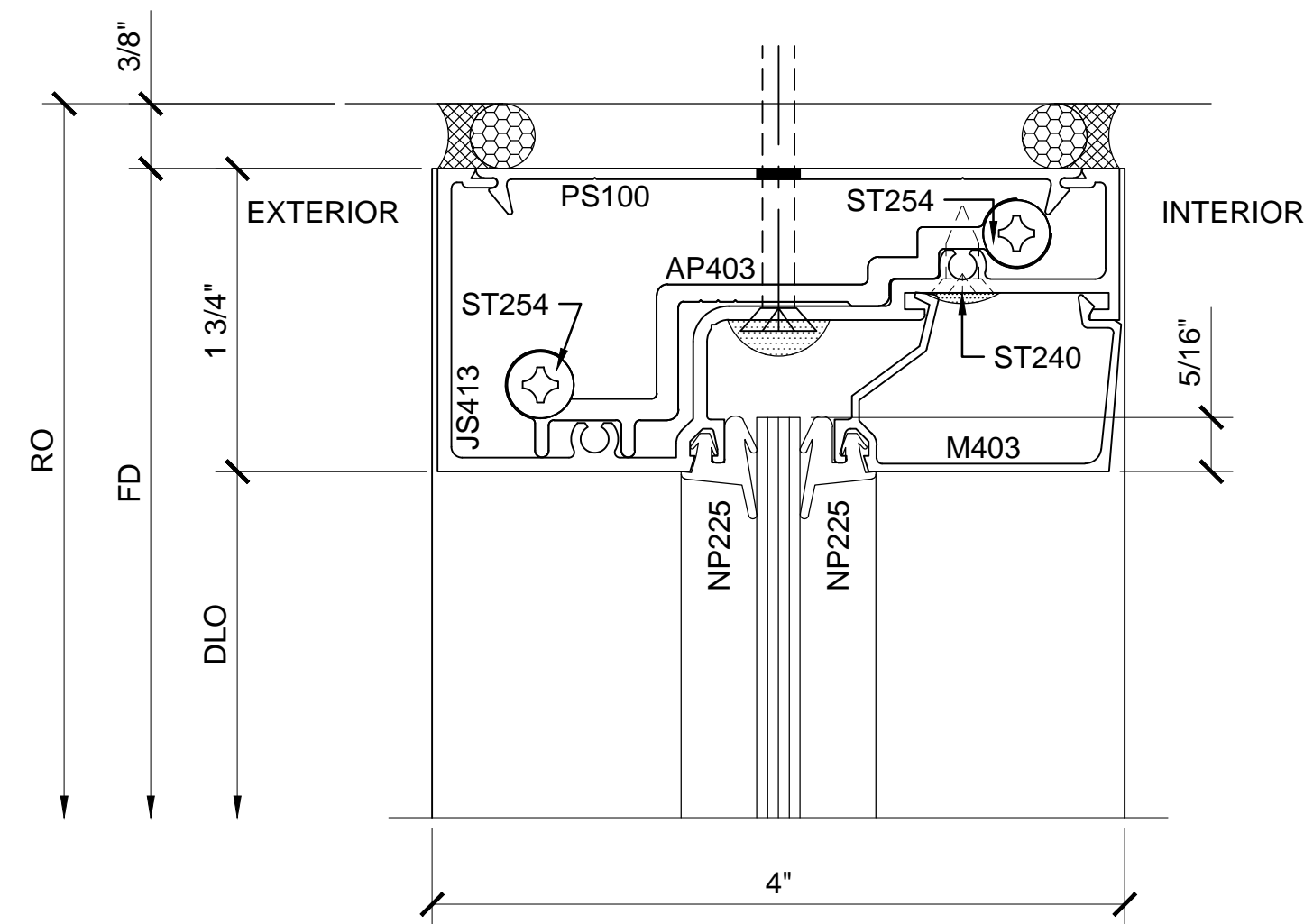
Drawn By: AAD

Date: 12/14/12

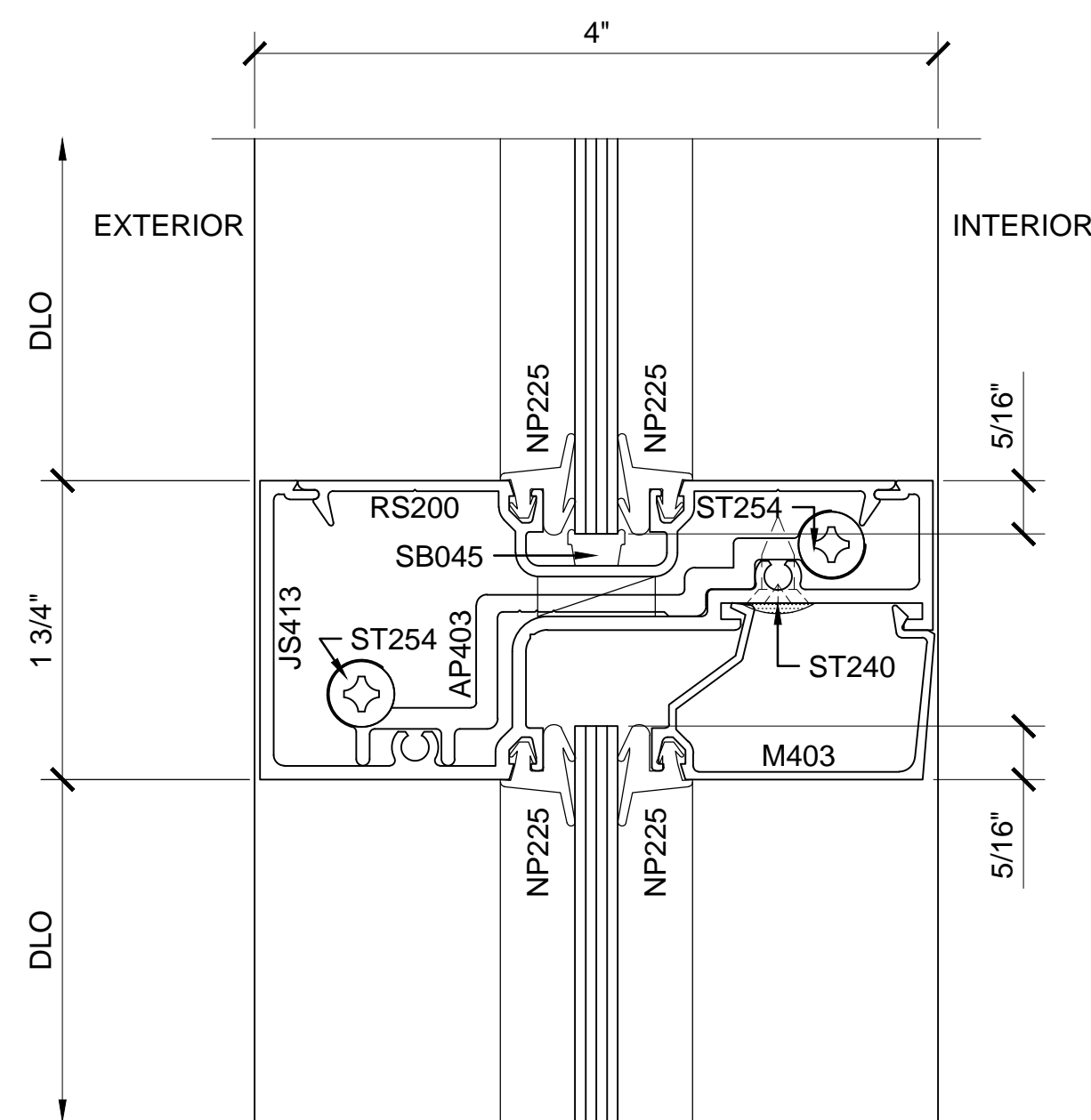
Scale: AS NOTE

File Name: SF 400

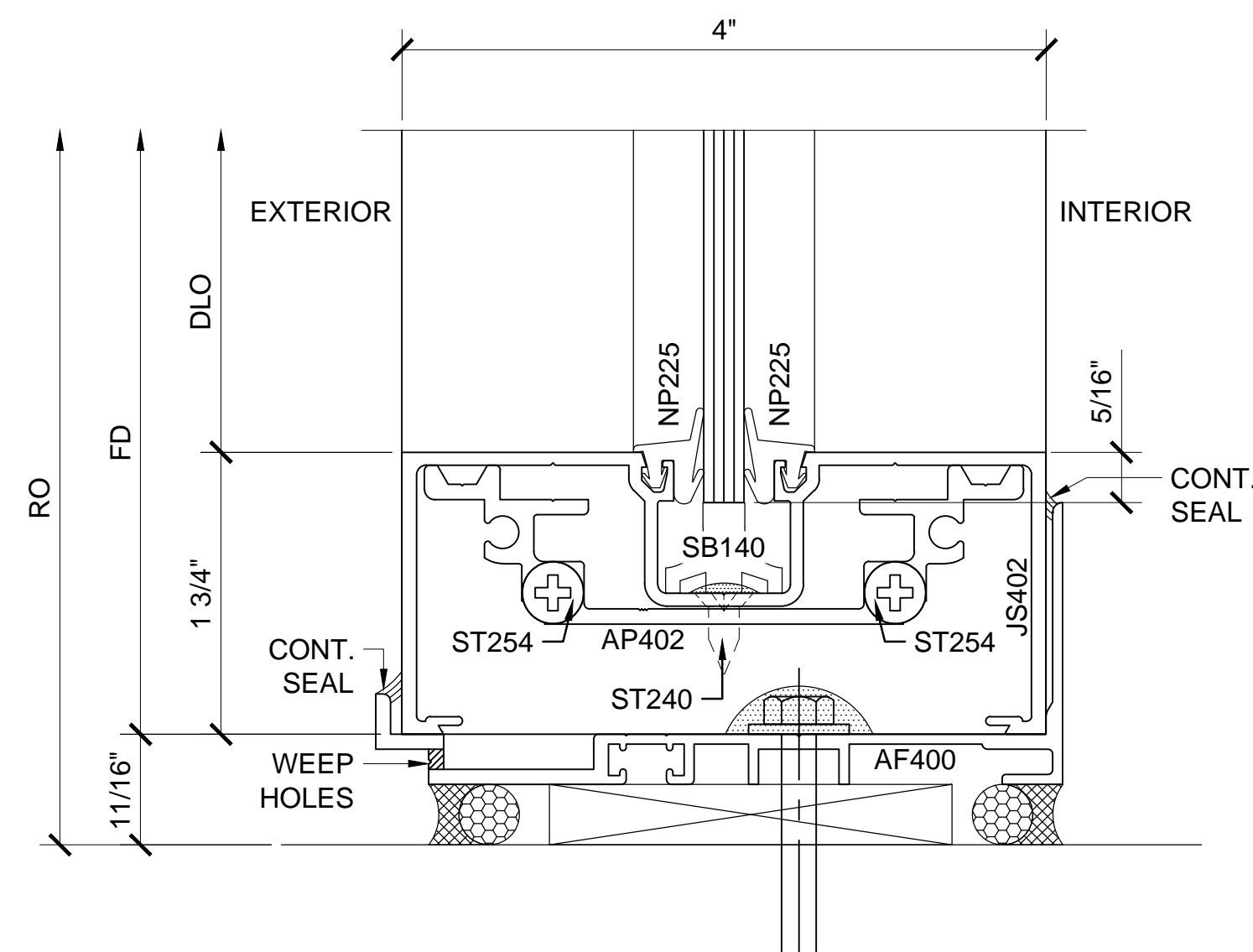
Sheet



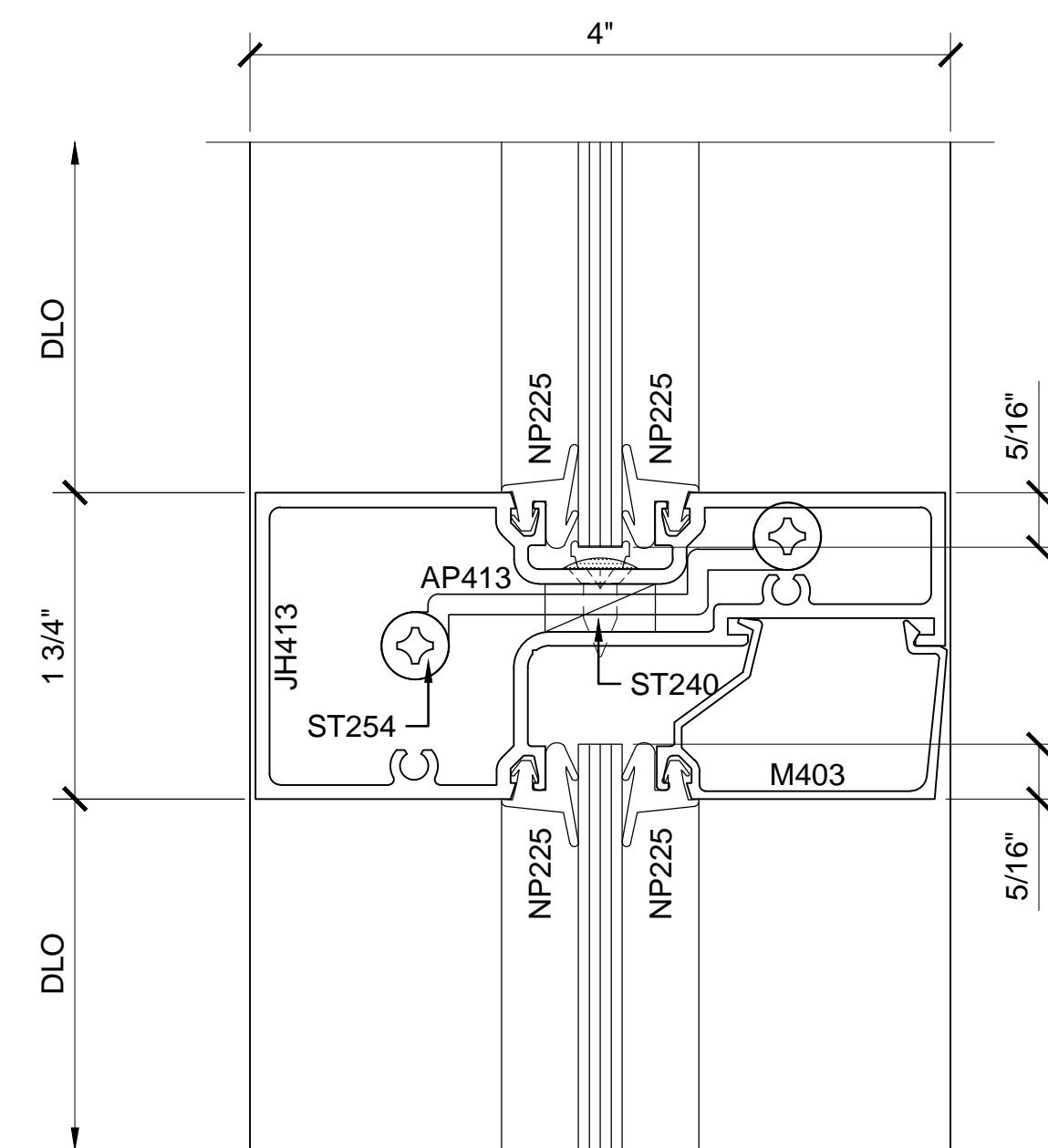
SECTION DETAIL AT HEAD ①



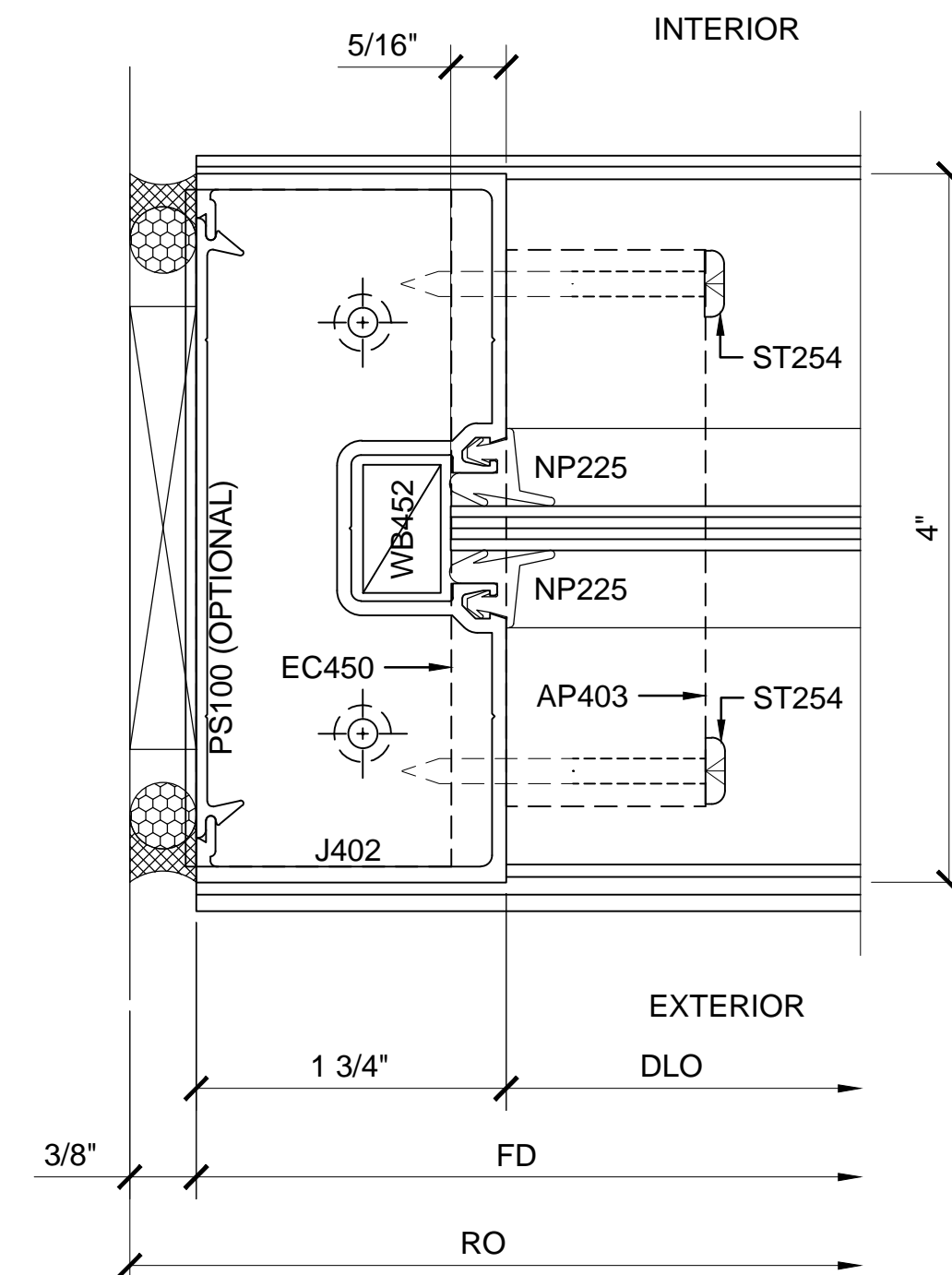
SECTION DETAIL AT INTERMEDIATE HORIZONTAL ②
TYPICAL FOR SHEAR LUG ASSEMBLY



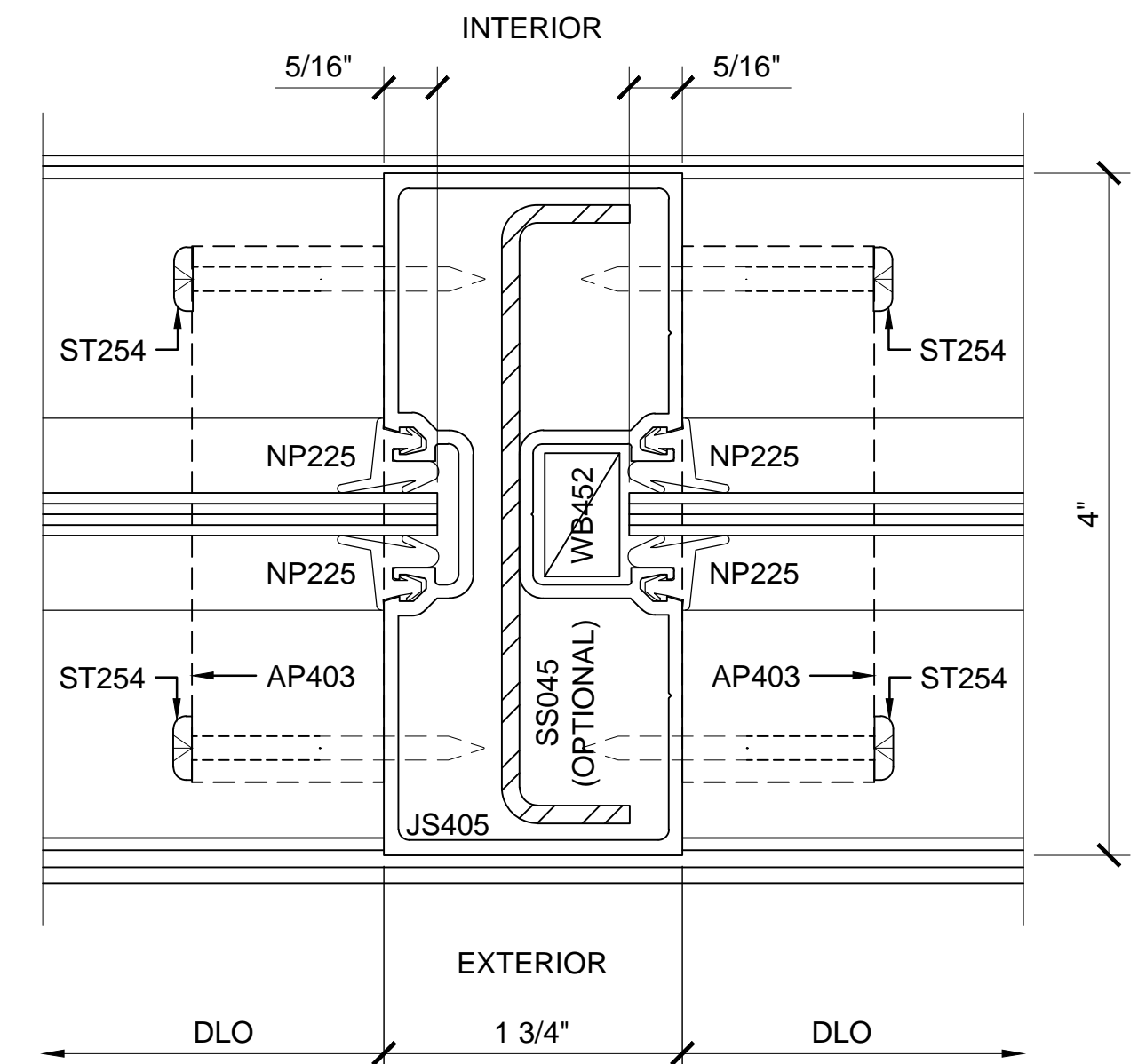
SECTION DETAIL AT SILL ④



SECTION DETAIL AT INTERMEDIATE HORIZONTAL ③
TYPICAL FOR SCREW RACE ASSEMBLY - (SHEAR BLOCK FOR LOAD DISTRIBUTION)



SECTION DETAIL AT JAMB ⑤



SECTION DETAIL AT HOLLOW INTERMEDIATE VERTICAL ⑥
TYPICAL SHEAR BLOCK ASSEMBLY MULLION

SERIES 400 CENTER / INTERIOR GLAZED SHEAR BLOCK STOREFRONT SYSTEM

Revisions By:

U.S. ALUMINUM
C.R. LAURENCE CO. ARCHITECTURAL PRODUCTS
2503 E. Vernon Avenue, Los Angeles, CA 90058-1897
PH (800)-421-6144 FX: 800-597-7501 www.crlaurence.com

Discription:
U.S. ALUMINUM
SERIES 400 CENTER GLAZED
STOREFRONT SYSTEM

Drawn By: AAD
Date: 12/14/12
Scale: AS NOTED
File Name: SF 400
Sheet