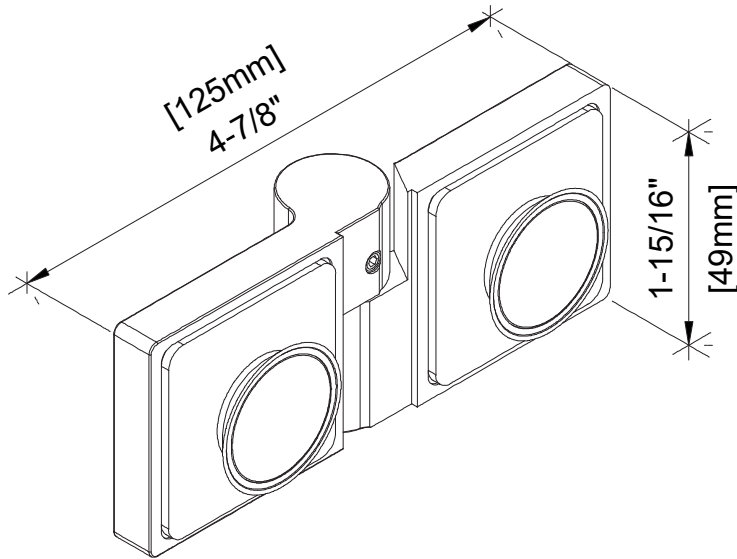


**\* SEE TEMPLATE ON BACK \***  
Refer to Dimensions Shown  
to Ensure Accuracy



## LUGANO

Glass-to-Glass 180° Hinge

CAT. NO. LUG180L/R

**\*NOTE:** Do not exceed either maximum weight or width when choosing proper quantity of hinges.

### Important Information:

- 1). This is a one-direction hinge and is designed for an outswing application only. A door strike is required so the door isn't allowed to swing inward and damage the door glass.
- 2). This hinge comes equipped with a self-centering rise and fall action.

### Specifications:

Glass Sizes:	5/16" (8mm) to 3/8" (10mm) thick tempered safety glass
Construction:	Solid brass
Closing Type:	Outswing only
Cutout Required:	Countersunk Holes
Includes:	Gaskets, screws and template

### Maximum Door Capacities

	Two Hinges
Maximum Door Weight:	99 lbs. (45 kg)
Maximum Door Width:	35" (889mm)

### Use of Gaskets:

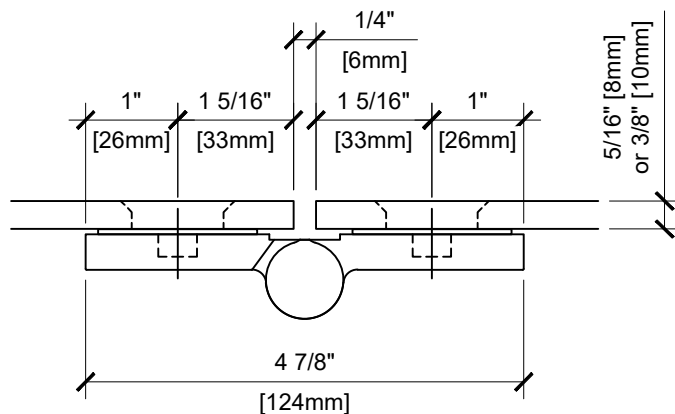
Gasket is integral part of Hinge, no matter the glass thickness.

### Recommendations:

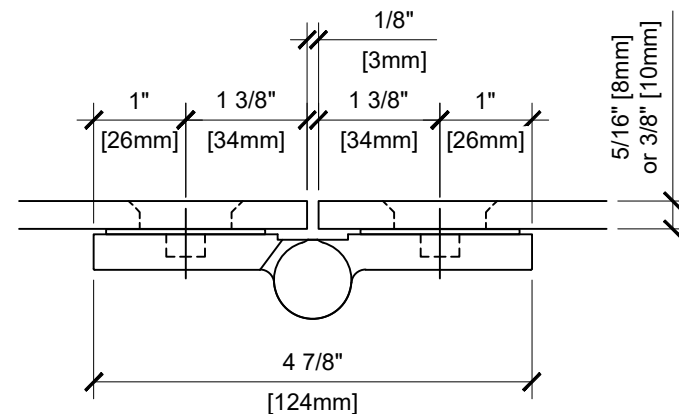
For public safety, we recommend the use of only tempered safety glass. Do not use power tools when installing these hinges.

### Maintenance Guidelines:

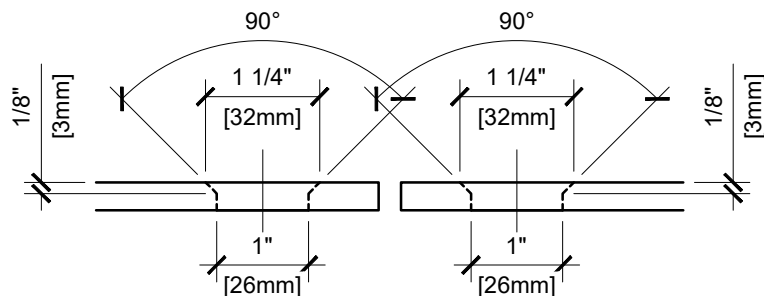
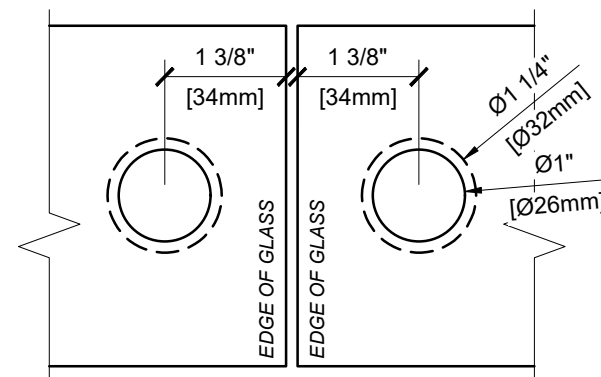
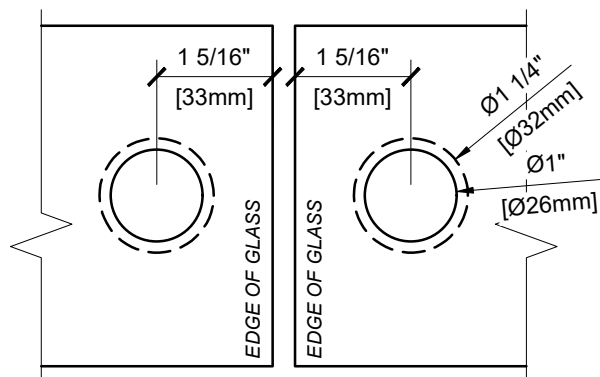
- Never use an abrasive cleaner on the hardware. Many of the components are coated with a clear lacquer that will be irreparably damaged if subjected to harsh, abrasive chemicals. Advise your customer that drying the hardware with a clean, soft towel on a daily basis is the best way to maintain the hardware. If mineral deposits build-up, mix a couple of drops of a mild liquid soap (such as Ivory or a similar product) into a cup of warm water. Using a soft, non-abrasive cloth, clean the hardware. Rinse thoroughly with clean, warm water and dry.



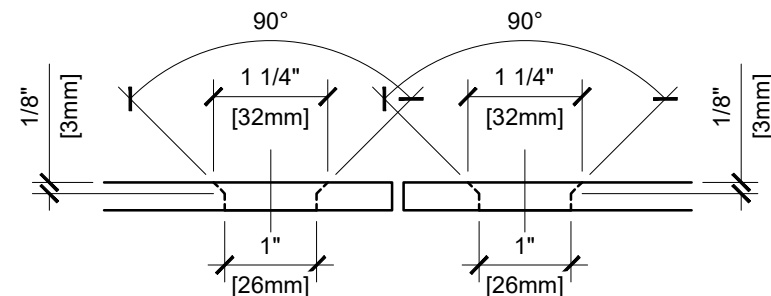
STANDARD GLASS CUTOUT



TIGHT CLEARANCE GLASS CUTOUT



GLASS CUTOUT



GLASS CUTOUT

## LUGANO

Glass-to-Glass 180° Hinge

CAT. NO. LUG180L/R