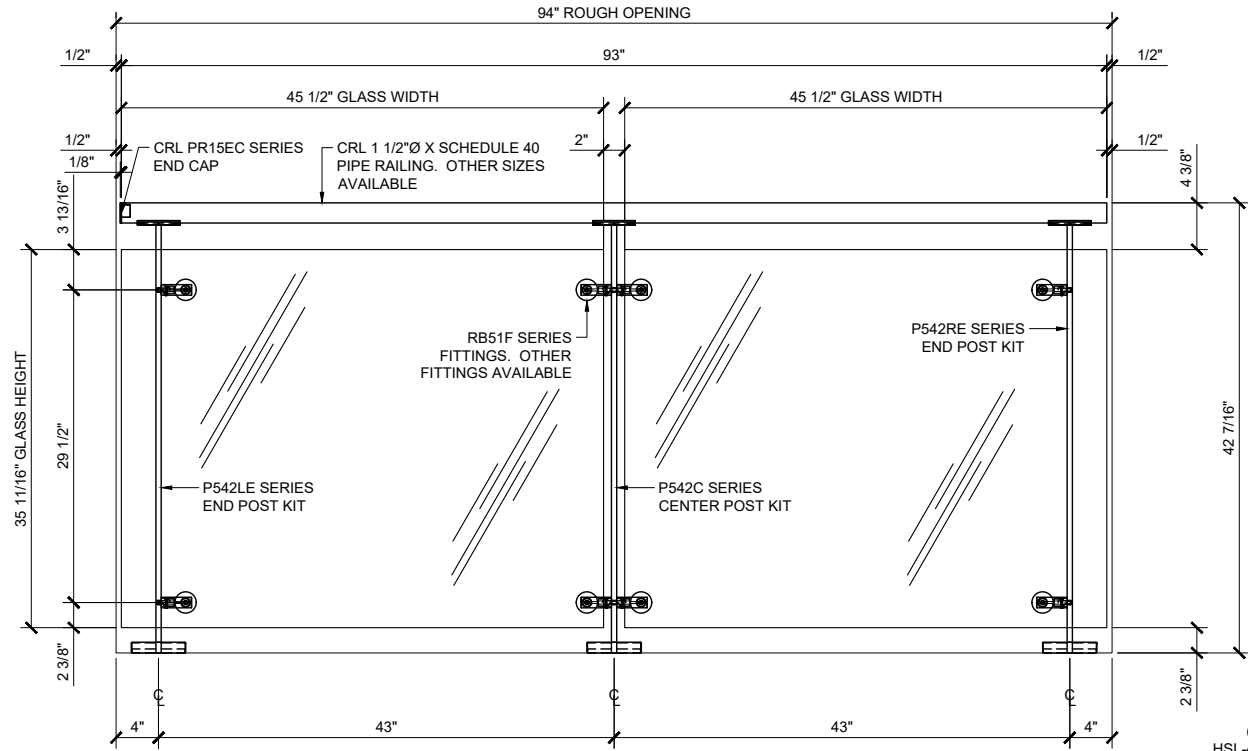


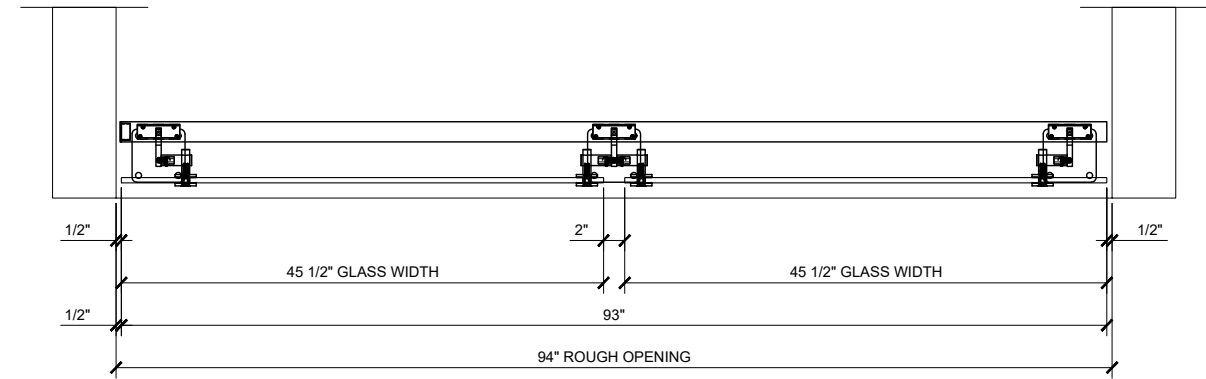
CRL P5 SERIES POST RAILING SYSTEM

- * DESIGNED TO ACCEPT 1/2" TO 27/32" TEMPERED GLASS
- * TOP SADDLE SUPPORTS 1 1/4"Ø & 1 1/2"Ø SCHEDULE 40 PIPE RAILING AND 1 1/2"Ø O.D. TUBE RAILING
- * 36" AND 42" STANDARD POST HEIGHTS WITH CUSTOM HEIGHTS AVAILABLE
- * TWO STANDARD STAINLESS STEEL FINISHES WITH CUSTOM POWDER PAINT FINISHES ALSO AVAILABLE



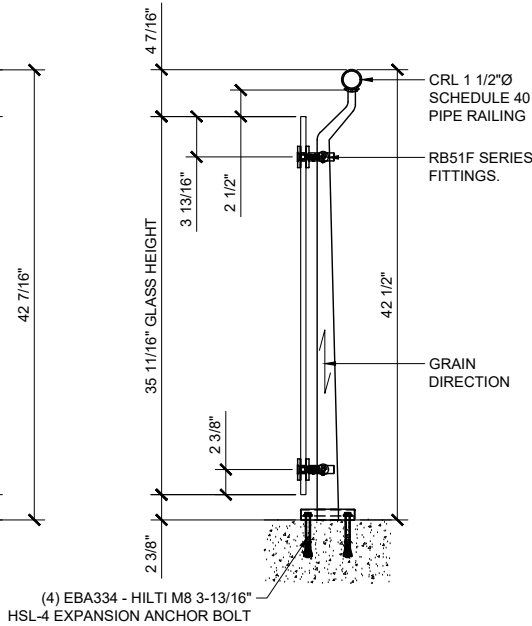
TYPICAL ELEVATION

1 1/2"=1'-0"



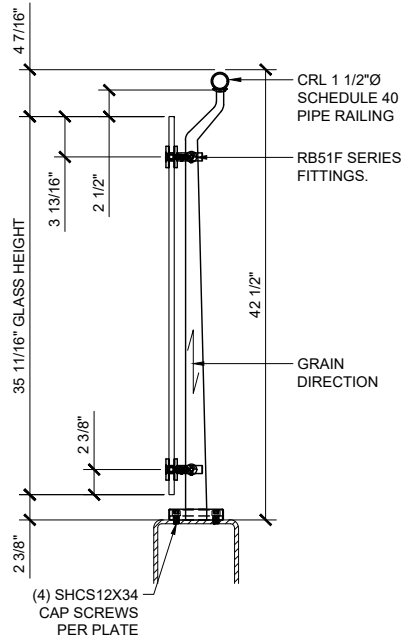
TYPICAL PLAN VIEW

1 1/2"=1'-0"



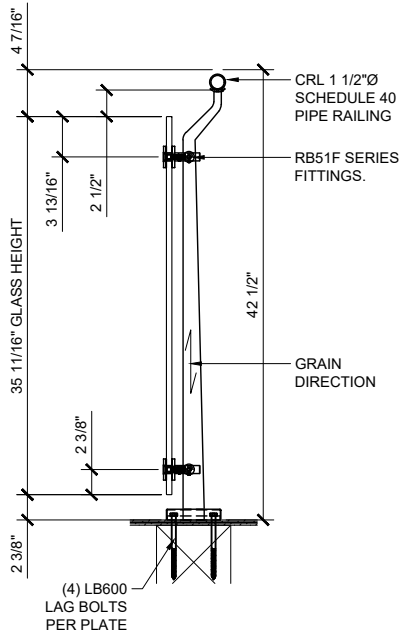
CONCRETE MOUNT

1 1/2"=1'-0"



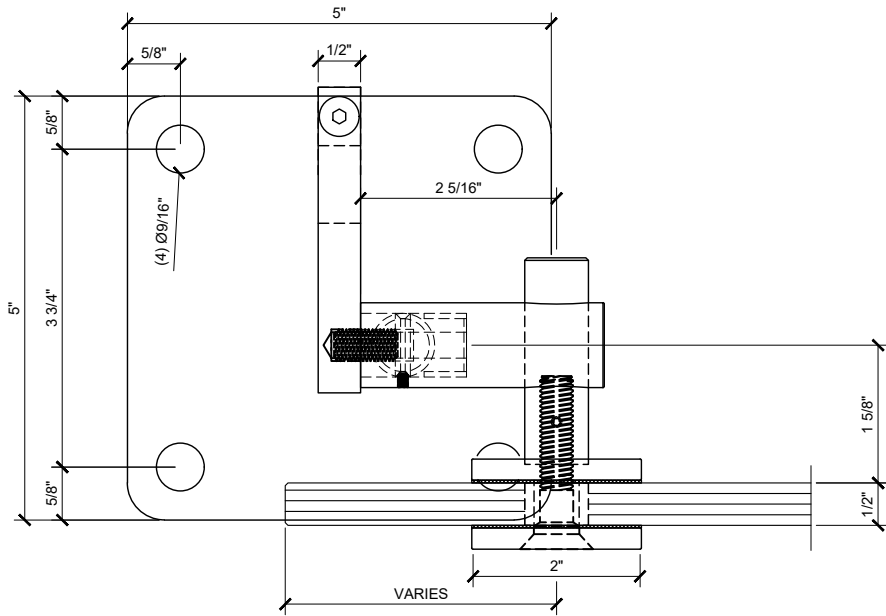
STEEL MOUNT

1 1/2"=1'-0"



WOOD MOUNT

1 1/2"=1'-0"



RB51F FIXED FITTING W/ FLANGE

SCALE: 1'-0"=1'-0"

Revisions By:

CRL

2503 E. Vernon Avenue, Los Angeles, CA 90058-1887
PH (800)-421-6144 FX: 800-587-7501 www.crlaurence.com

Description:

CRL P5 SERIES
POST RAILING SYSTEMS
SYS0071E

Drawn By: SDH

Date: 03/08/2017

Scale: AS NOTED

File Name:
SYS0071E P5 Series Stainless Steel Post Railing Systems

Sheet

1.01