

| | | |
|---------------|----------|-----|
| Revisions By: | | |
| △ | 03-30-26 | RPD |
| △ | 02-25-26 | AB |
| △ | 03/07/25 | JO |
| △ | 01-31-25 | AB |
| △ | 03-07-22 | RPD |

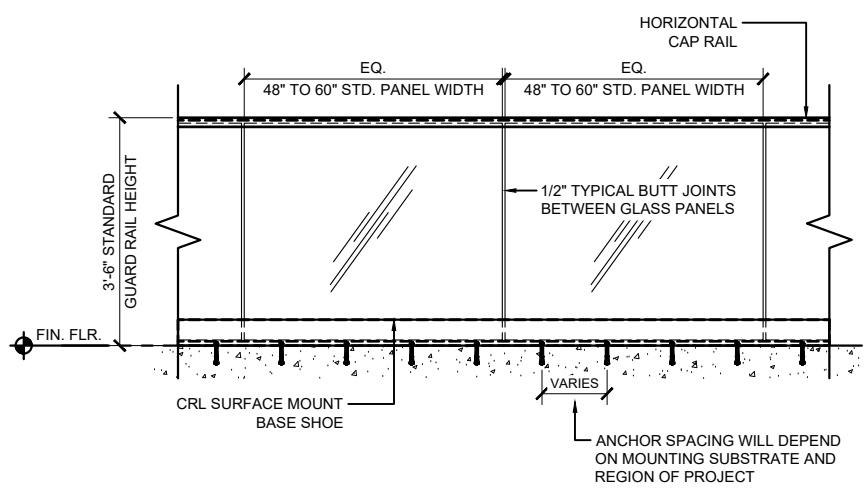
CRL
 C.R. LAURENCE CO. ARCHITECTURAL PRODUCTS
 2500 E. Vernon Avenue, Los Angeles, CA 90058-1897
 PH: (800)-421-6144 FX: (800)-987-7501 WWW: crlaurence.com

ICC ESR-3842

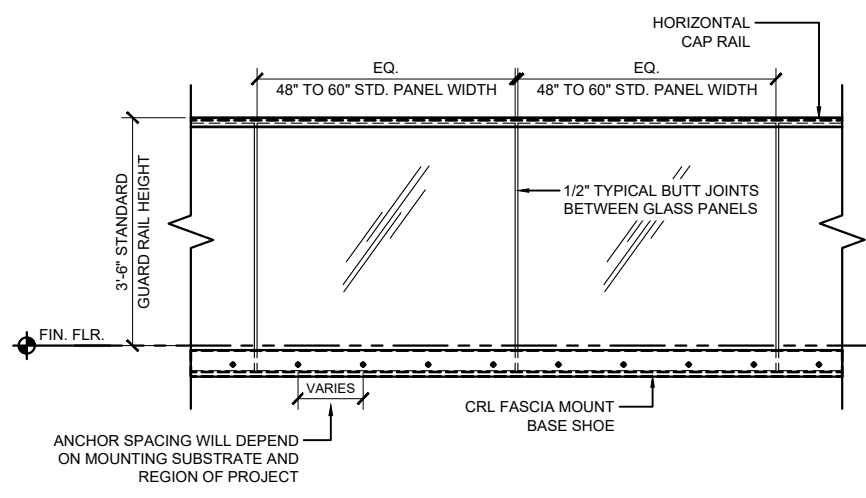
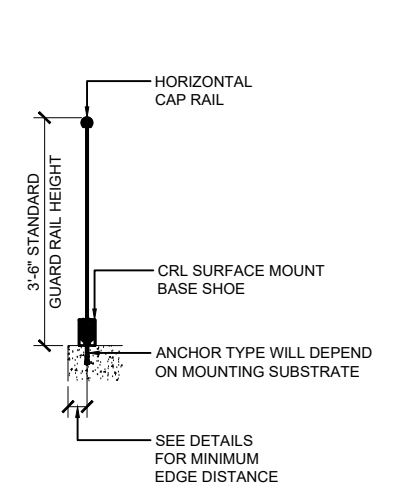
GRS
 GLASS RAILING SYSTEM
 FOR TEMPERED LAMINATED
 9/16" (13.52mm), 1 1/16" (17.52mm),
 1 3/16" (20.64mm) & 1 1/2" (25.52mm)
 THK. GLASS

ELEVATIONS AND SECTIONS
 SURFACE MOUNT AND
 FASCIA MOUNT OPTIONS

Drawn By: JG / RPD
 Date: 12/03/2021
 Scale: AS NOTED
 File Name:
 CRL GRS Laminated Glass Railing System.dwg
 Sheet

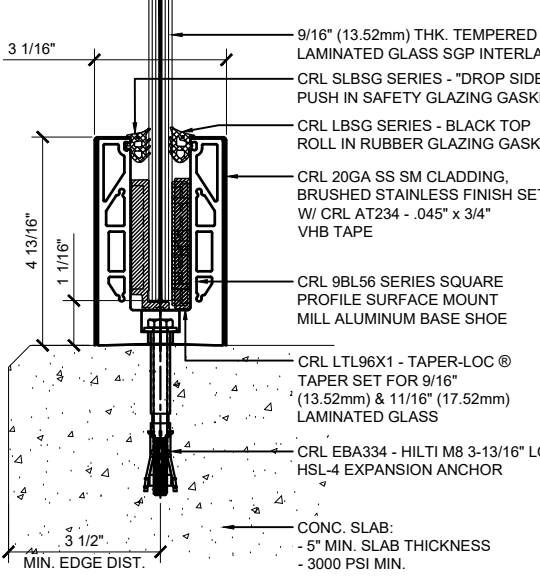


TYPICAL GRS LAMINATED GLASS RAILING ELEVATION VIEW - SURFACE MOUNT



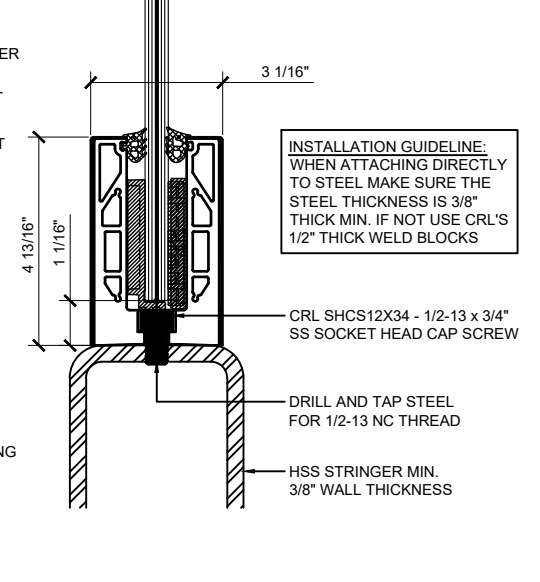
TYPICAL GRS LAMINATED GLASS RAILING ELEVATION VIEW - FASCIA MOUNT

TYPICAL BASE SHOE ATTACHMENTS USING THE 9BL56 SERIES BASE SHOE WITH TAPER-LOC® SYSTEM



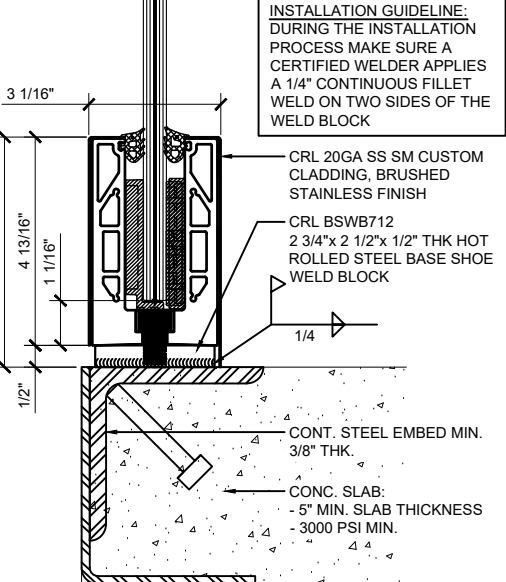
SURFACE MOUNT DETAIL
 CONCRETE SUBSTRATE

ANCHOR SPACING WILL DEPEND ON MOUNTING SUBSTRATE AND REGION OF PROJECT
 12" O.C. SPACING IS STANDARD



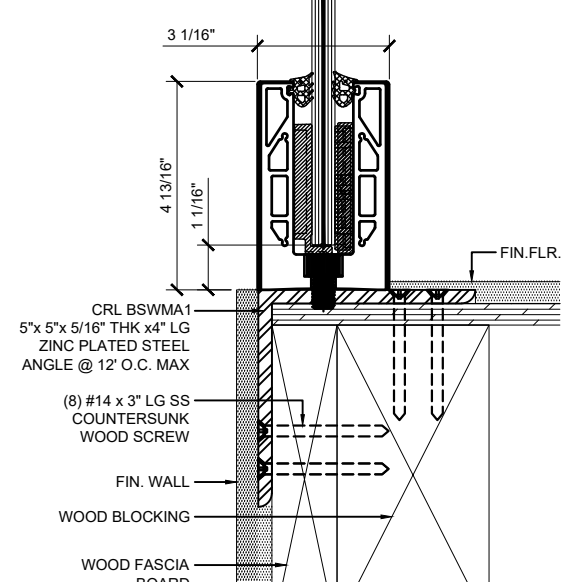
SURFACE MOUNT DETAIL
 STEEL SUBSTRATE

12" ON CENTER ANCHOR SPACING



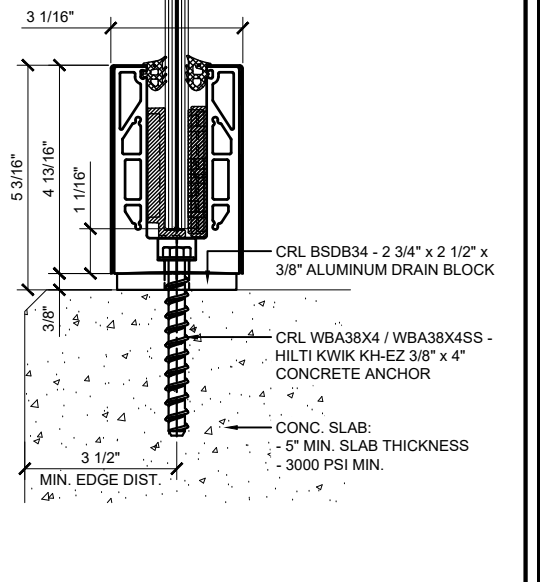
SURFACE MOUNT DETAIL
 STEEL SUBSTRATE W/ WELD BLOCK

12" ON CENTER ANCHOR SPACING



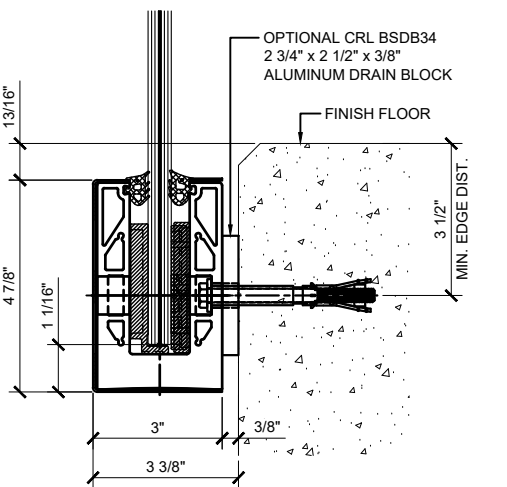
SURFACE MOUNT DETAIL
 WOOD SUBSTRATE

12" ON CENTER ANCHOR SPACING



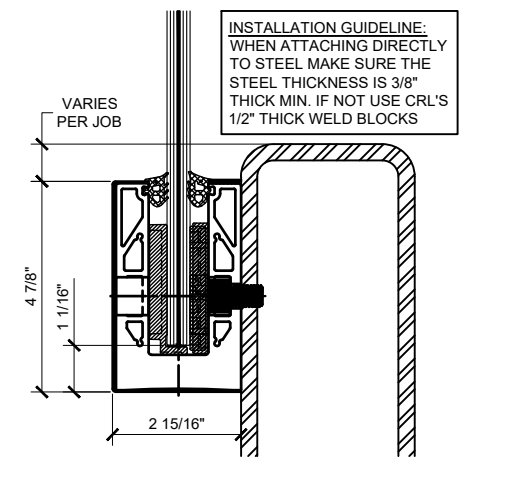
SURFACE MOUNT DETAIL
 CONCRETE SUBSTRATE W/ DRAIN BLOCK

ANCHOR SPACING WILL DEPEND ON MOUNTING SUBSTRATE AND REGION OF PROJECT
 12" O.C. SPACING IS STANDARD



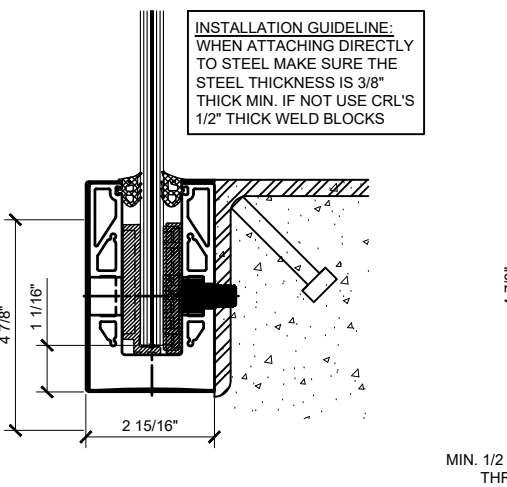
FASCIA MOUNT DETAIL
 CONCRETE SUBSTRATE

ANCHOR SPACING WILL DEPEND ON MOUNTING SUBSTRATE AND REGION OF PROJECT
 12" O.C. SPACING IS STANDARD



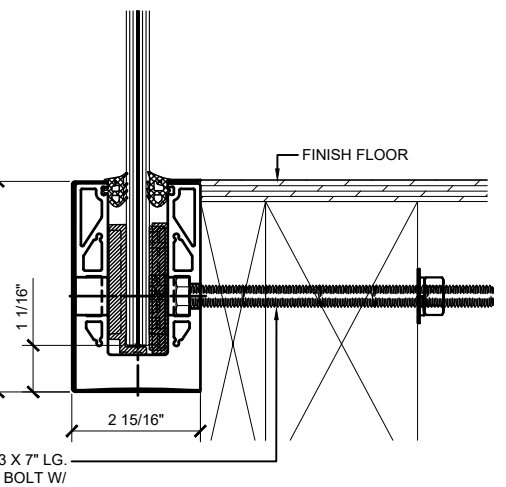
FASCIA MOUNT DETAIL
 STEEL SUBSTRATE

12" ON CENTER ANCHOR SPACING



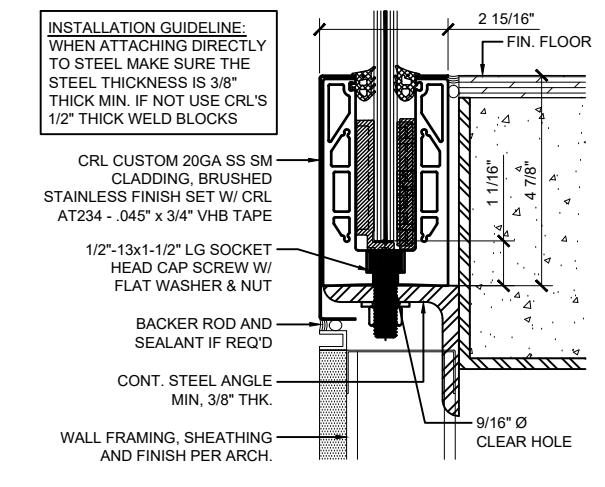
FASCIA MOUNT DETAIL
 STEEL SUBSTRATE

12" ON CENTER ANCHOR SPACING



FASCIA MOUNT DETAIL
 WOOD SUBSTRATE

MIN. 1/2" -13 X 7" LG. THRU BOLT W/ (2) FLAT WASHERS (1) LOCK WASHER (1) HEX NUT
 ANCHOR SPACING WILL DEPEND ON MOUNTING SUBSTRATE AND REGION OF PROJECT
 12" O.C. SPACING IS STANDARD



SURFACE MOUNT DETAIL
 STEEL SUBSTRATE W/ CUSTOM CLADDING

12" ON CENTER ANCHOR SPACING

INSTALLATION GUIDELINE:
 WHEN ATTACHING DIRECTLY TO STEEL MAKE SURE THE STEEL THICKNESS IS 3/8" THICK MIN. IF NOT USE CRL'S 1/2" THICK WELD BLOCKS

CRL CUSTOM 20GA SS SM CLADDING, BRUSHED STAINLESS FINISH SET W/ CRL AT234 - .045" x 3/4" VHB TAPE

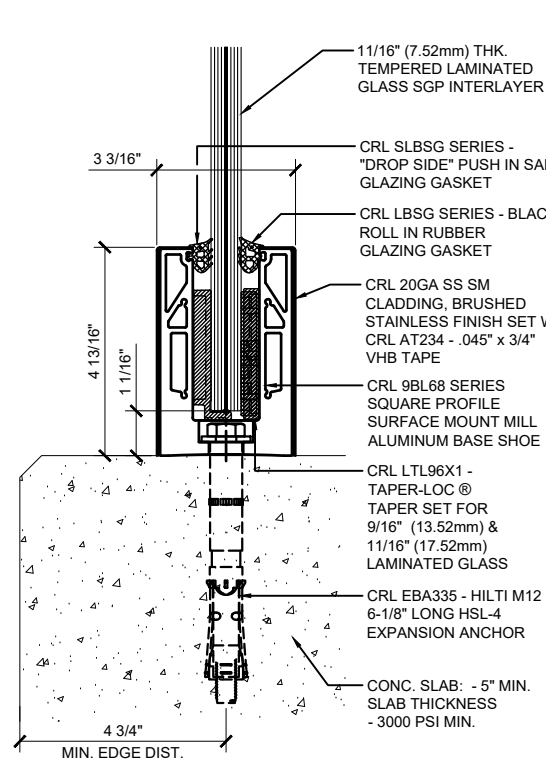
1/2" -13x1-1/2" LG SOCKET HEAD CAP SCREW W/ FLAT WASHER & NUT

BACKER ROD AND SEALANT IF REQ'D

CONT. STEEL ANGLE MIN. 3/8" THK.

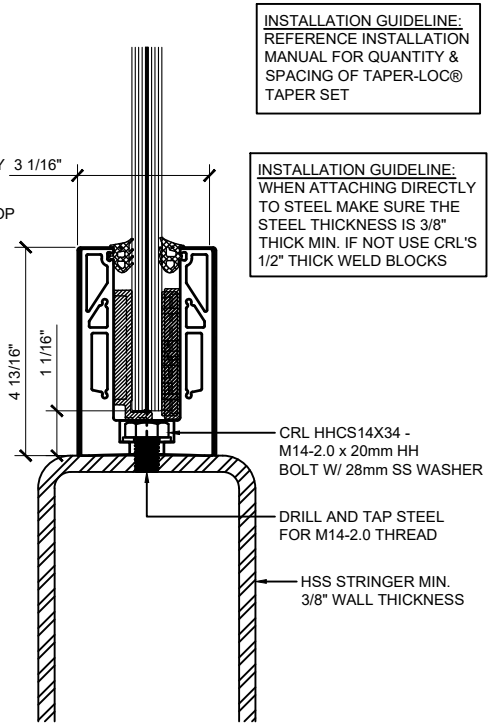
WALL FRAMING, SHEATHING AND FINISH PER ARCH.

TYPICAL BASE SHOE ATTACHMENTS USING THE 9BL68 SERIES BASE SHOE WITH TAPER-LOC® SYSTEM



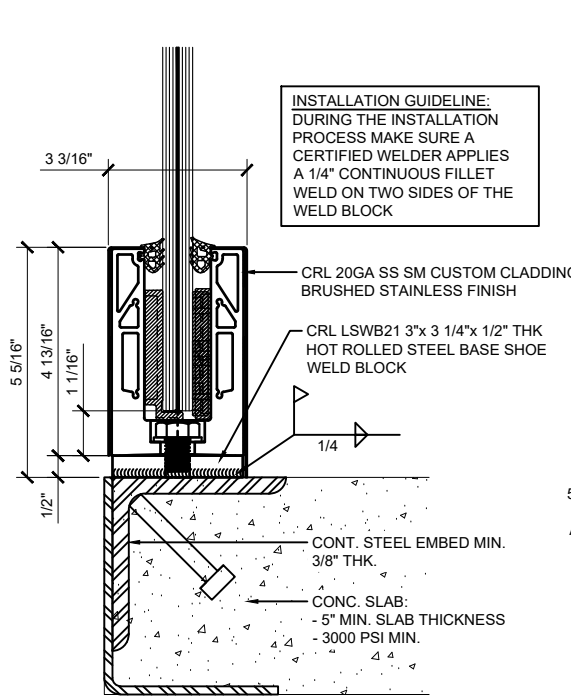
**SURFACE MOUNT DETAIL
CONCRETE SUBSTRATE**

ANCHOR SPACING WILL DEPEND ON MOUNTING SUBSTRATE AND REGION OF PROJECT
11 13/16" (300MM) O.C. SPACING IS STANDARD



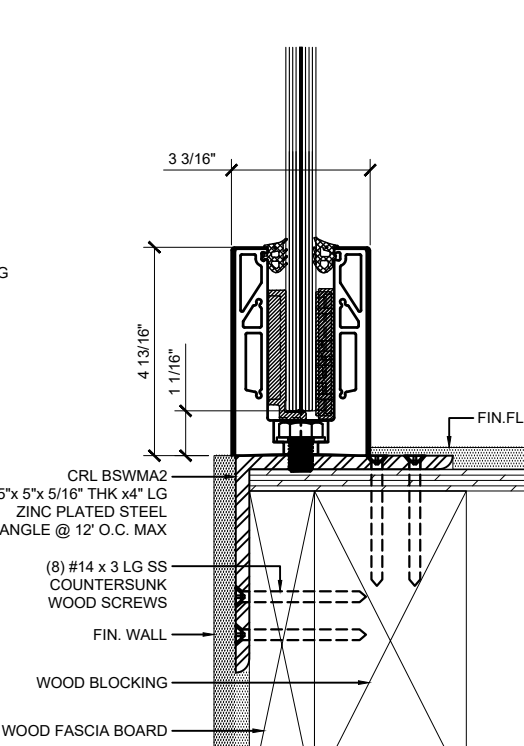
**SURFACE MOUNT DETAIL
STEEL SUBSTRATE**

11 13/16" (300MM) ON CENTER ANCHOR SPACING



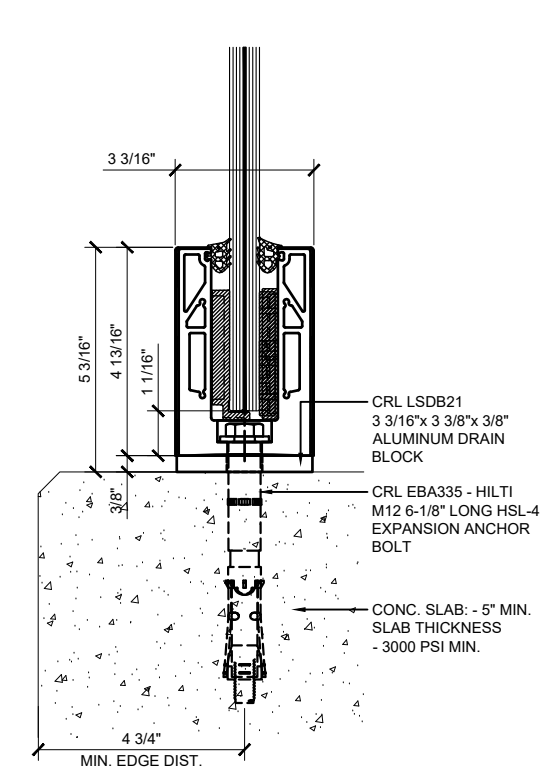
**SURFACE MOUNT DETAIL
STEEL SUBSTRATE W/ WELD BLOCK**

11 13/16" (300MM) ON CENTER ANCHOR SPACING



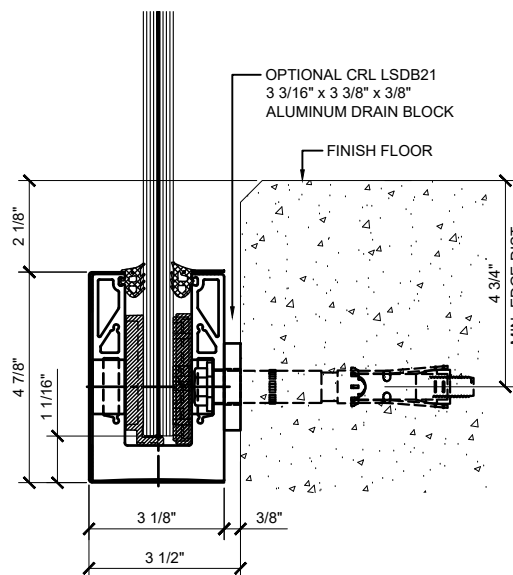
**SURFACE MOUNT DETAIL
WOOD SUBSTRATE**

11 13/16" (300MM) ON CENTER ANCHOR SPACING



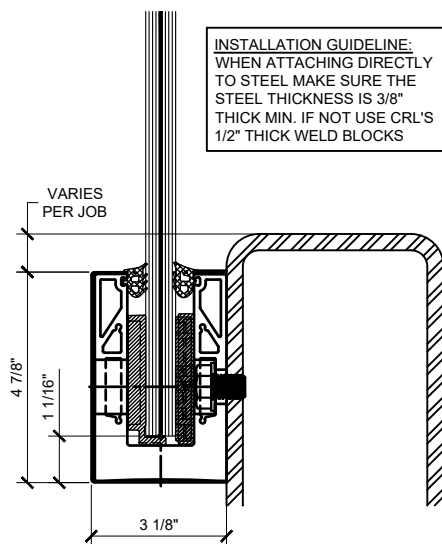
**SURFACE MOUNT DETAIL
CONCRETE SUBSTRATE W/ DRAIN BLOCK**

ANCHOR SPACING WILL DEPEND ON MOUNTING SUBSTRATE AND REGION OF PROJECT
11 13/16" (300MM) O.C. SPACING IS STANDARD



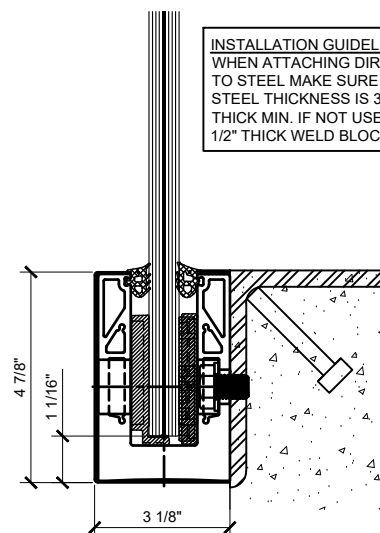
**FASCIA MOUNT DETAIL
CONCRETE SUBSTRATE**

ANCHOR SPACING WILL DEPEND ON MOUNTING SUBSTRATE AND REGION OF PROJECT
11 13/16" (300MM) O.C. SPACING IS STANDARD



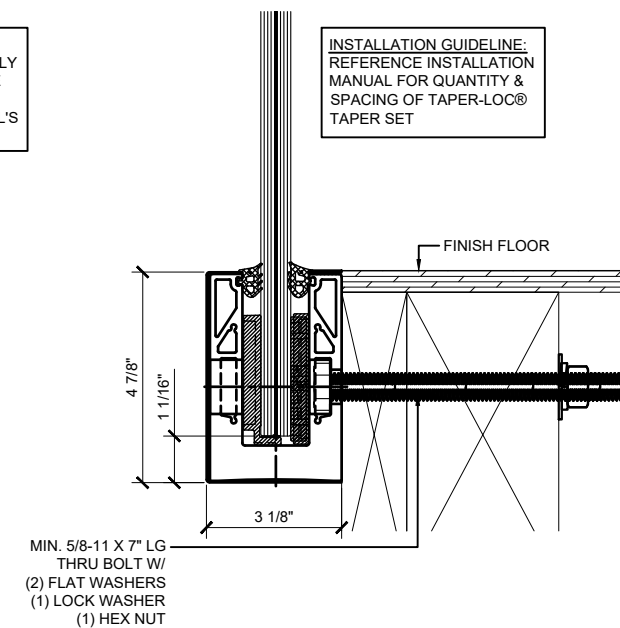
**FASCIA MOUNT DETAIL
STEEL SUBSTRATE**

11 13/16" (300MM) ON CENTER ANCHOR SPACING



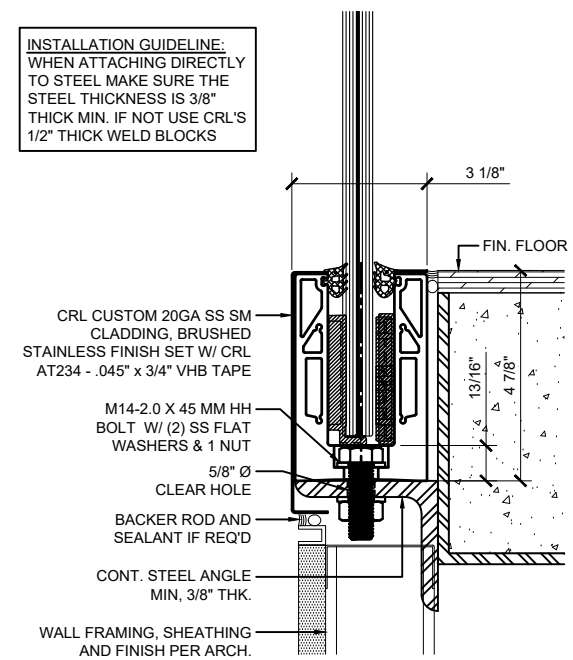
**FASCIA MOUNT DETAIL
STEEL SUBSTRATE**

11 13/16" (300MM) ON CENTER ANCHOR SPACING



**FASCIA MOUNT DETAIL
WOOD SUBSTRATE**

ANCHOR SPACING WILL DEPEND ON MOUNTING SUBSTRATE AND REGION OF PROJECT
11 13/16" (300MM) O.C. SPACING IS STANDARD



**SURFACE MOUNT DETAIL
STEEL SUBSTRATE W/ CUSTOM CLADDING**

11 13/16" (300MM) ON CENTER ANCHOR SPACING

INSTALLATION GUIDELINE:
REFERENCE INSTALLATION
MANUAL FOR QUANTITY &
SPACING OF TAPER-LOC®
TAPER SET

INSTALLATION GUIDELINE:
WHEN ATTACHING DIRECTLY
TO STEEL MAKE SURE THE
STEEL THICKNESS IS 3/8"
THICK MIN. IF NOT USE CRL'S
1/2" THICK WELD BLOCKS

INSTALLATION GUIDELINE:
DURING THE INSTALLATION
PROCESS MAKE SURE A
CERTIFIED WELDER APPLIES
A 1/4" CONTINUOUS FILLET
WELD ON TWO SIDES OF THE
WELD BLOCK

INSTALLATION GUIDELINE:
WHEN ATTACHING DIRECTLY
TO STEEL MAKE SURE THE
STEEL THICKNESS IS 3/8"
THICK MIN. IF NOT USE CRL'S
1/2" THICK WELD BLOCKS

INSTALLATION GUIDELINE:
WHEN ATTACHING DIRECTLY
TO STEEL MAKE SURE THE
STEEL THICKNESS IS 3/8"
THICK MIN. IF NOT USE CRL'S
1/2" THICK WELD BLOCKS

INSTALLATION GUIDELINE:
REFERENCE INSTALLATION
MANUAL FOR QUANTITY &
SPACING OF TAPER-LOC®
TAPER SET

INSTALLATION GUIDELINE:
WHEN ATTACHING DIRECTLY
TO STEEL MAKE SURE THE
STEEL THICKNESS IS 3/8"
THICK MIN. IF NOT USE CRL'S
1/2" THICK WELD BLOCKS

| | | |
|---------------|----------|-----|
| Revisions By: | | |
| △ | 03-30-26 | RPD |
| △ | 02-25-26 | AB |
| △ | 03/07/25 | JO |
| △ | 01-31-25 | AB |
| △ | 03-07-22 | RPD |

CRL

C.R. LAURENCE CO. ARCHITECTURAL PRODUCTS
2509 E. Vernon Avenue, Los Angeles, CA 90058-1897
PH (800)-421-6144 FX (800)-987-7501 www.crlaurence.com

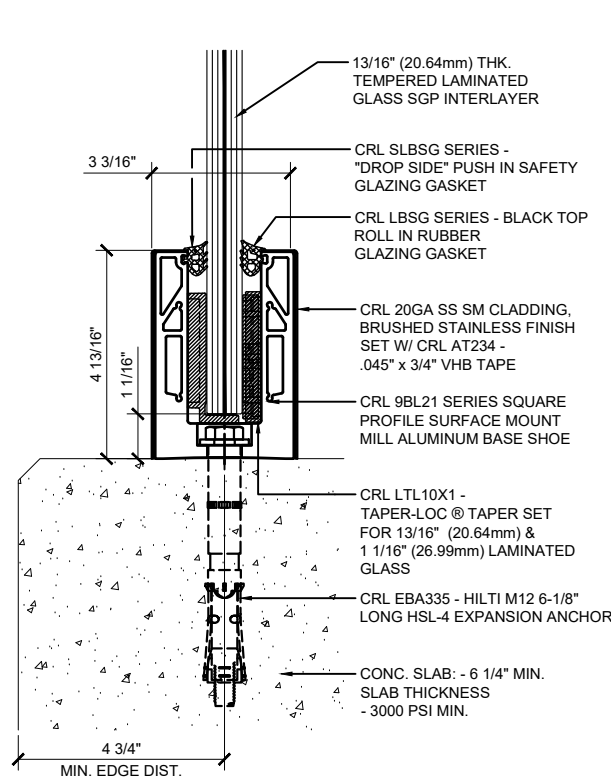
ICG **ES** ESR-3842

GRS
GLASS RAILING SYSTEM
FOR TEMPERED LAMINATED
9/16" (13.52mm), 1 1/16" (17.52mm),
1 3/16" (20.64mm) & 1 1/8" (25.52mm)
THK. GLASS

BASE SHOE OPTIONS
SURFACE & FASCIA MOUNT

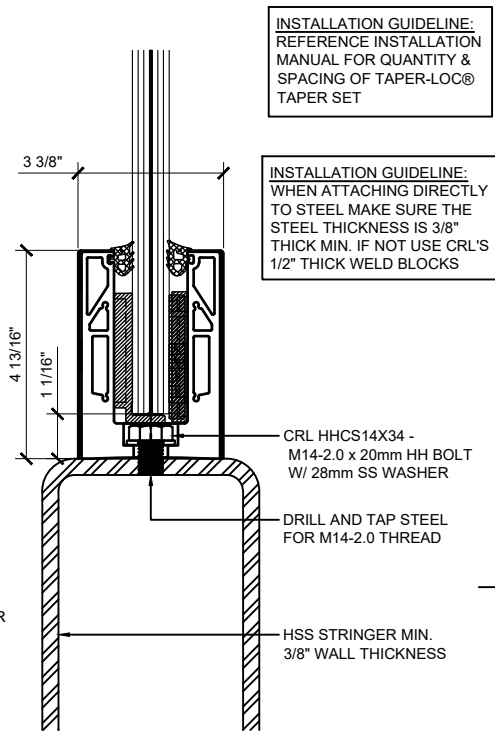
Drawn By: JG / RPD
Date: 12/03/2021
Scale: AS NOTED
File Name:
CRL GRS Laminated Glass Railing System.dwg

TYPICAL BASE SHOE ATTACHMENTS USING THE 9BL21 SERIES BASE SHOE WITH TAPER-LOC® SYSTEM



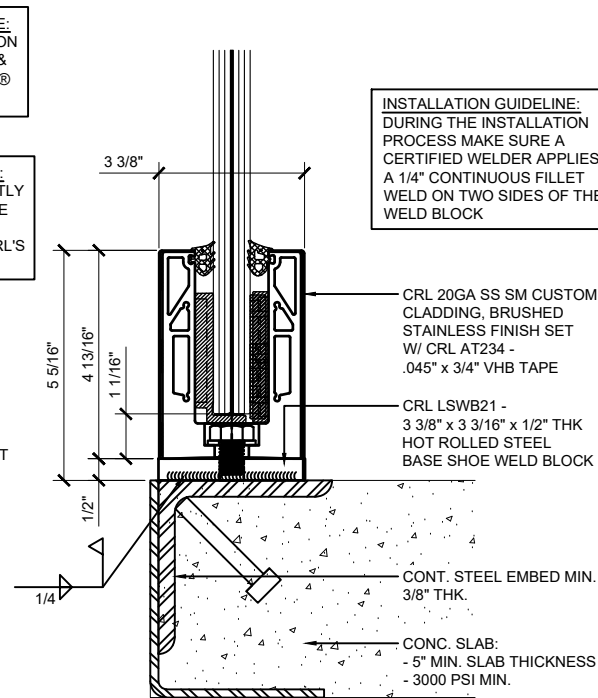
**SURFACE MOUNT DETAIL
CONCRETE SUBSTRATE**

ANCHOR SPACING WILL DEPEND ON MOUNTING SUBSTRATE AND REGION OF PROJECT
11 13/16" (300mm) O.C. IS STANDARD



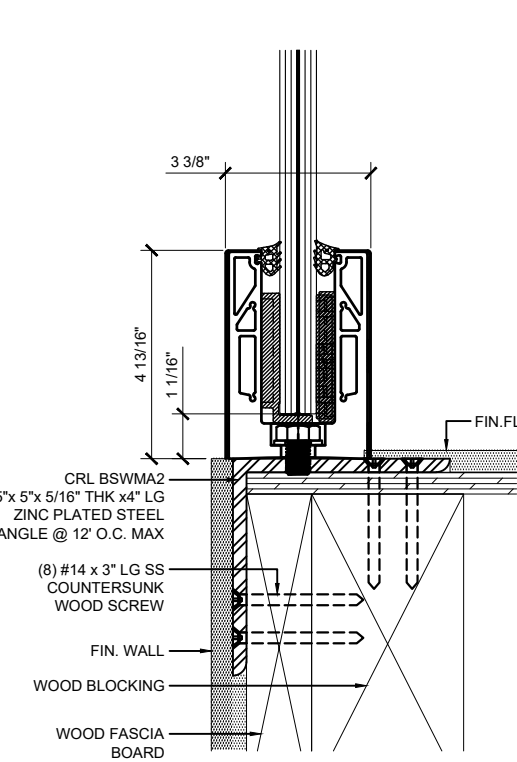
**SURFACE MOUNT DETAIL
STEEL SUBSTRATE**

11 13/16" (300mm) ON CENTER ANCHOR SPACING



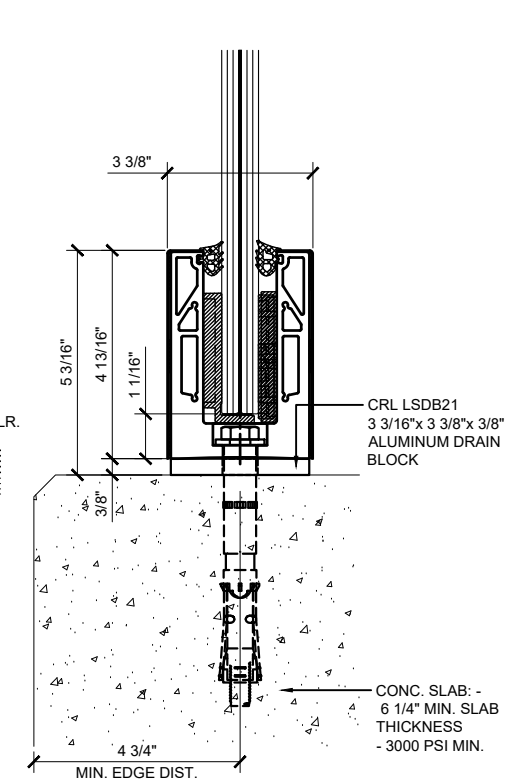
**SURFACE MOUNT DETAIL
STEEL SUBSTRATE W/ WELD BLOCK**

11 13/16" (300mm) ON CENTER ANCHOR SPACING



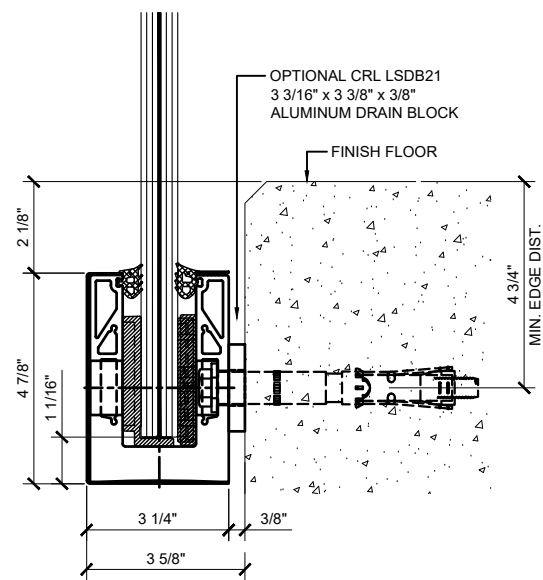
**SURFACE MOUNT DETAIL
WOOD SUBSTRATE**

11 13/16" (300mm) ON CENTER ANCHOR SPACING



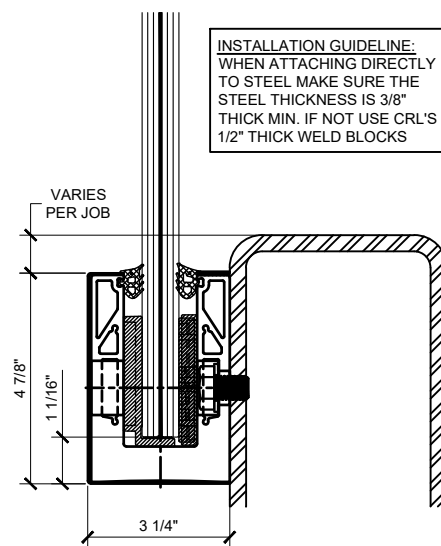
**SURFACE MOUNT DETAIL
CONCRETE SUBSTRATE W/ DRAIN BLOCK**

ANCHOR SPACING WILL DEPEND ON MOUNTING SUBSTRATE AND REGION OF PROJECT
11 13/16" (300mm) O.C. IS STANDARD



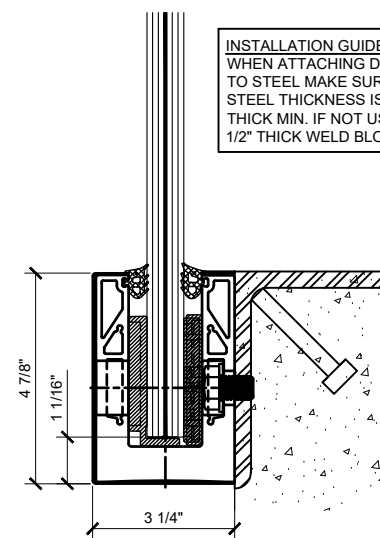
**FASCIA MOUNT DETAIL
CONCRETE SUBSTRATE**

ANCHOR SPACING WILL DEPEND ON MOUNTING SUBSTRATE AND REGION OF PROJECT
11 13/16" (300MM) O.C. SPACING IS STANDARD



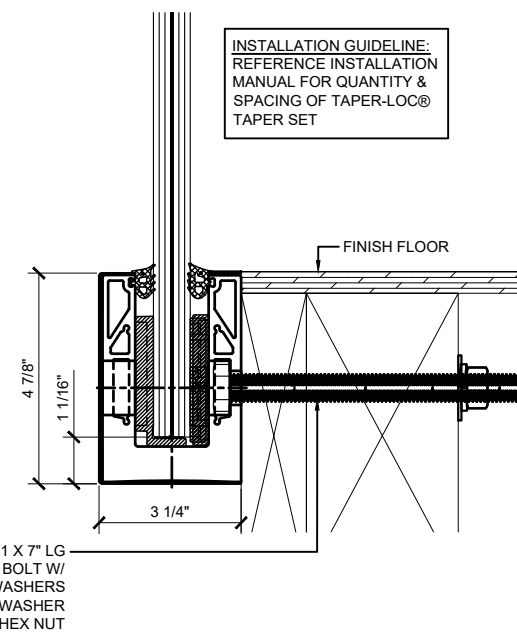
**FASCIA MOUNT DETAIL
STEEL SUBSTRATE**

11 13/16" (300MM) ON CENTER ANCHOR SPACING



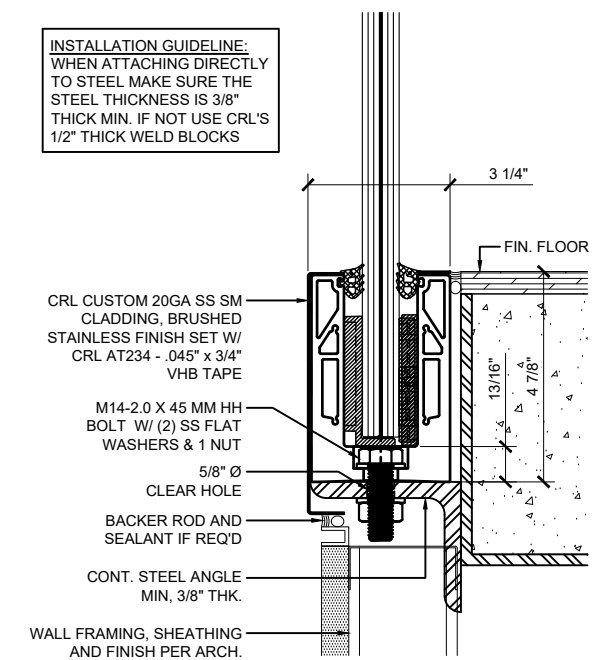
**FASCIA MOUNT DETAIL
STEEL SUBSTRATE**

11 13/16" (300MM) ON CENTER ANCHOR SPACING



**FASCIA MOUNT DETAIL
WOOD SUBSTRATE**

ANCHOR SPACING WILL DEPEND ON MOUNTING SUBSTRATE AND REGION OF PROJECT
11 13/16" (300MM) O.C. SPACING IS STANDARD



**SURFACE MOUNT DETAIL
STEEL SUBSTRATE W/ CUSTOM CLADDING**

11 13/16" (300MM) ON CENTER ANCHOR SPACING

INSTALLATION GUIDELINE:
REFERENCE INSTALLATION MANUAL FOR QUANTITY & SPACING OF TAPER-LOC® TAPER SET

INSTALLATION GUIDELINE:
WHEN ATTACHING DIRECTLY TO STEEL MAKE SURE THE STEEL THICKNESS IS 3/8" THICK MIN. IF NOT USE CRL'S 1/2" THICK WELD BLOCKS

INSTALLATION GUIDELINE:
DURING THE INSTALLATION PROCESS MAKE SURE A CERTIFIED WELDER APPLIES A 1/4" CONTINUOUS FILLET WELD ON TWO SIDES OF THE WELD BLOCK

INSTALLATION GUIDELINE:
WHEN ATTACHING DIRECTLY TO STEEL MAKE SURE THE STEEL THICKNESS IS 3/8" THICK MIN. IF NOT USE CRL'S 1/2" THICK WELD BLOCKS

INSTALLATION GUIDELINE:
WHEN ATTACHING DIRECTLY TO STEEL MAKE SURE THE STEEL THICKNESS IS 3/8" THICK MIN. IF NOT USE CRL'S 1/2" THICK WELD BLOCKS

INSTALLATION GUIDELINE:
REFERENCE INSTALLATION MANUAL FOR QUANTITY & SPACING OF TAPER-LOC® TAPER SET

INSTALLATION GUIDELINE:
WHEN ATTACHING DIRECTLY TO STEEL MAKE SURE THE STEEL THICKNESS IS 3/8" THICK MIN. IF NOT USE CRL'S 1/2" THICK WELD BLOCKS

Revisions By:

| | | |
|---|----------|-----|
| △ | 03-30-26 | RPD |
| △ | 02-25-26 | AB |
| △ | 03/07/25 | JO |
| △ | 01-31-25 | AB |
| △ | 03-07-22 | RPD |

CRL

C.R. LAURENCE CO. ARCHITECTURAL PRODUCTS
2500 E. Vermont Avenue, Los Angeles, CA 90058-1897
PH (800)-421-6144 FX (800)-987-7501 www.crlaurence.com

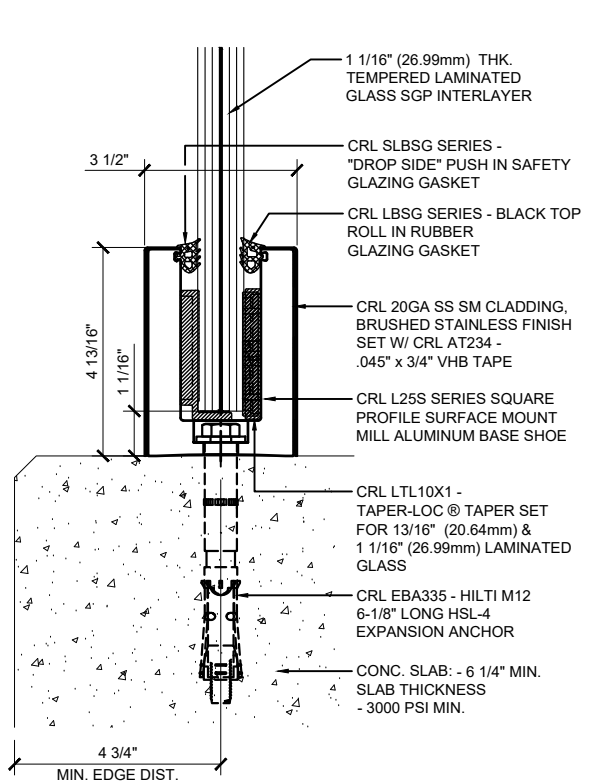
ICG ES ESR-3842

GRS
GLASS RAILING SYSTEM
FOR TEMPERED LAMINATED
9/16" (13.52mm), 1 1/16" (17.52mm),
1 3/16" (20.64mm) & 1 1/8" (25.52mm)
THK. GLASS

**BASE SHOE OPTIONS
SURFACE & FASCIA MOUNT**

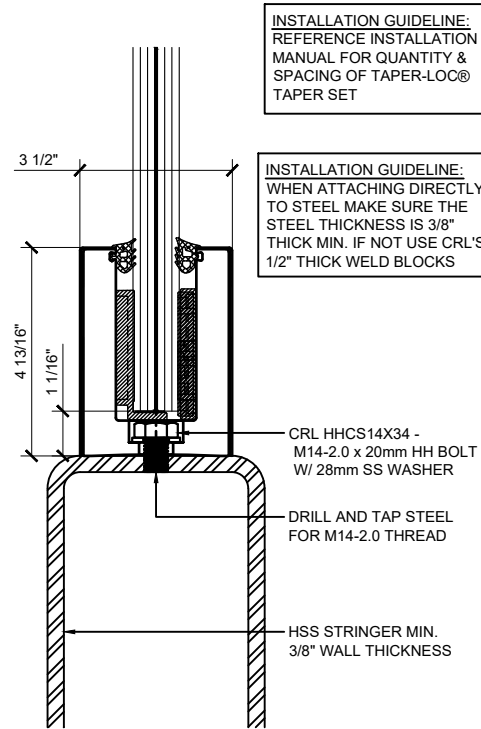
Drawn By: JG / RPD
Date: 12/03/2021
Scale: AS NOTED
File Name: CRL GRS Laminated Glass Railing System.dwg
Sheet

TYPICAL BASE SHOE ATTACHMENTS USING THE L25S SERIES BASE SHOE WITH TAPER-LOC® SYSTEM



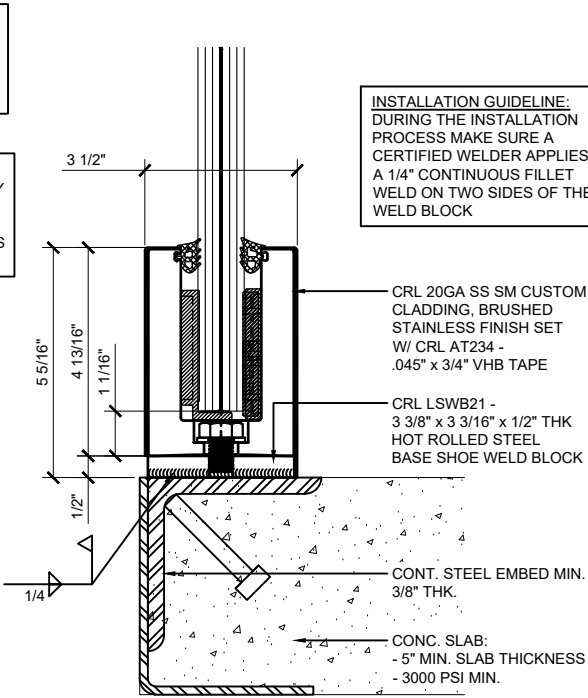
**SURFACE MOUNT DETAIL
CONCRETE SUBSTRATE**

ANCHOR SPACING WILL DEPEND ON MOUNTING
SUBSTRATE AND REGION OF PROJECT
11 13/16" (300mm) O.C. IS STANDARD



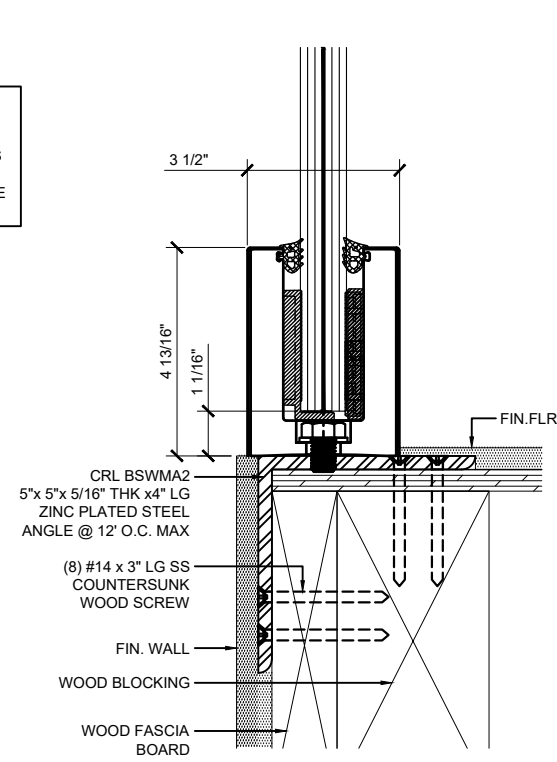
**SURFACE MOUNT DETAIL
STEEL SUBSTRATE**

11 13/16" (300mm) ON CENTER ANCHOR SPACING



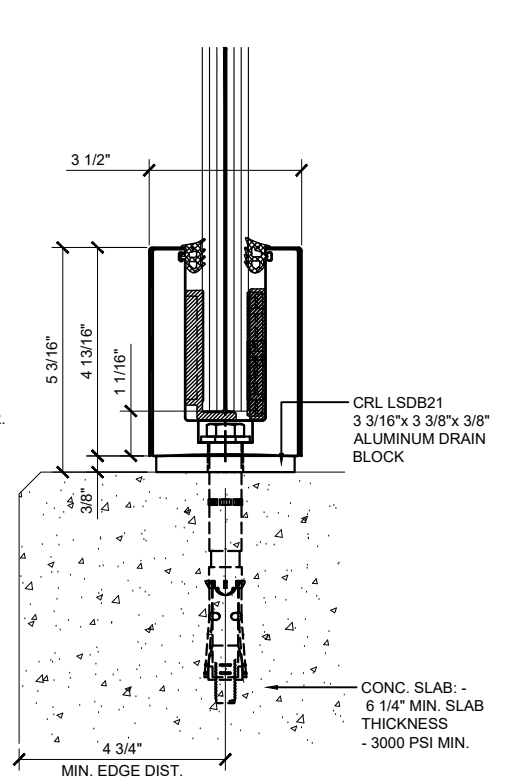
**SURFACE MOUNT DETAIL
STEEL SUBSTRATE W/ WELD BLOCK**

11 13/16" (300mm) ON CENTER ANCHOR SPACING



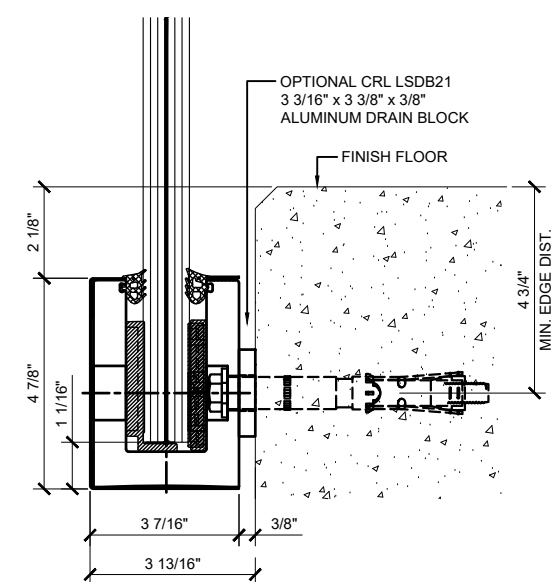
**SURFACE MOUNT DETAIL
WOOD SUBSTRATE**

11 13/16" (300mm) ON CENTER ANCHOR SPACING



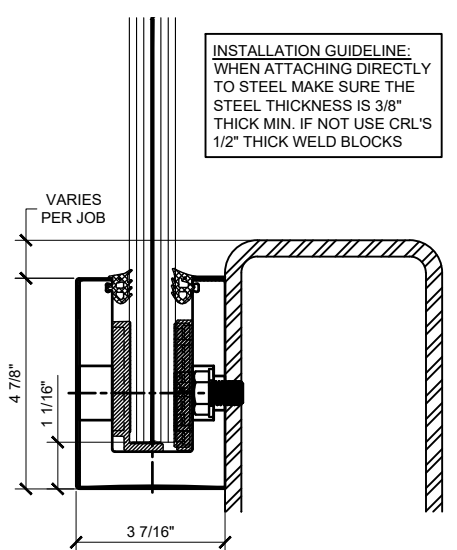
**SURFACE MOUNT DETAIL
CONCRETE SUBSTRATE W/ DRAIN BLOCK**

ANCHOR SPACING WILL DEPEND ON MOUNTING
SUBSTRATE AND REGION OF PROJECT
11 13/16" (300mm) O.C. IS STANDARD



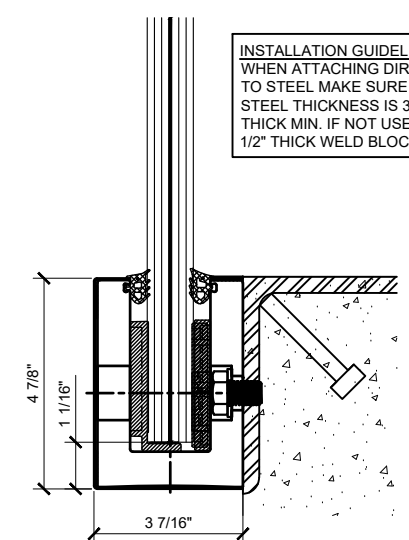
**FASCIA MOUNT DETAIL
CONCRETE SUBSTRATE**

ANCHOR SPACING WILL DEPEND ON MOUNTING
SUBSTRATE AND REGION OF PROJECT
11 13/16" (300MM) O.C. SPACING IS STANDARD



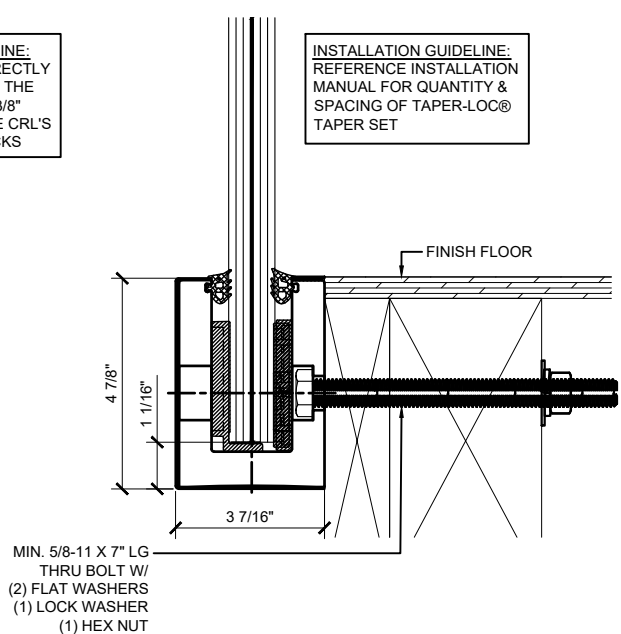
**FASCIA MOUNT DETAIL
STEEL SUBSTRATE**

11 13/16" (300MM) ON CENTER ANCHOR SPACING



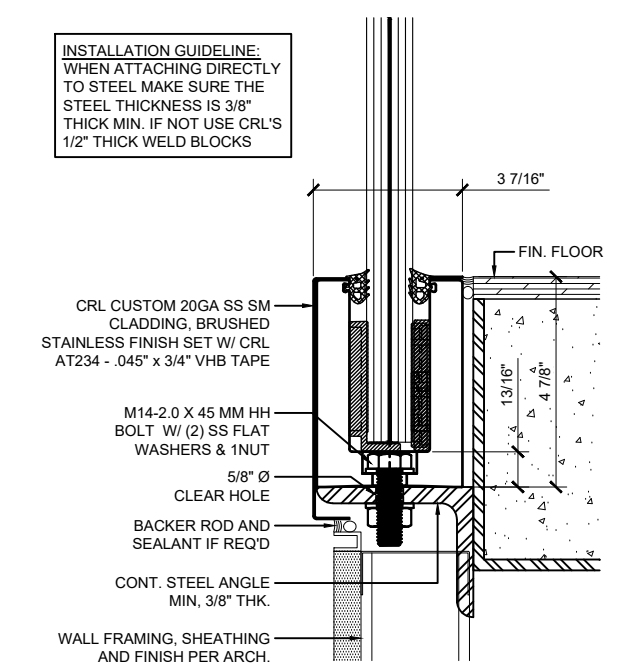
**FASCIA MOUNT DETAIL
STEEL SUBSTRATE**

11 13/16" (300MM) ON CENTER ANCHOR SPACING



**FASCIA MOUNT DETAIL
WOOD SUBSTRATE**

ANCHOR SPACING WILL DEPEND ON MOUNTING
SUBSTRATE AND REGION OF PROJECT
11 13/16" (300MM) O.C. SPACING IS STANDARD



**SURFACE MOUNT DETAIL
STEEL SUBSTRATE W/ CUSTOM CLADDING**

11 13/16" (300MM) ON CENTER ANCHOR SPACING

INSTALLATION GUIDELINE:
REFERENCE INSTALLATION
MANUAL FOR QUANTITY &
SPACING OF TAPER-LOC®
TAPER SET

INSTALLATION GUIDELINE:
WHEN ATTACHING DIRECTLY
TO STEEL MAKE SURE THE
STEEL THICKNESS IS 3/8"
THICK MIN. IF NOT USE CRL'S
1/2" THICK WELD BLOCKS

INSTALLATION GUIDELINE:
DURING THE INSTALLATION
PROCESS MAKE SURE A
CERTIFIED WELDER APPLIES
A 1/4" CONTINUOUS FILLET
WELD ON TWO SIDES OF THE
WELD BLOCK

INSTALLATION GUIDELINE:
WHEN ATTACHING DIRECTLY
TO STEEL MAKE SURE THE
STEEL THICKNESS IS 3/8"
THICK MIN. IF NOT USE CRL'S
1/2" THICK WELD BLOCKS

INSTALLATION GUIDELINE:
WHEN ATTACHING DIRECTLY
TO STEEL MAKE SURE THE
STEEL THICKNESS IS 3/8"
THICK MIN. IF NOT USE CRL'S
1/2" THICK WELD BLOCKS

INSTALLATION GUIDELINE:
REFERENCE INSTALLATION
MANUAL FOR QUANTITY &
SPACING OF TAPER-LOC®
TAPER SET

INSTALLATION GUIDELINE:
WHEN ATTACHING DIRECTLY
TO STEEL MAKE SURE THE
STEEL THICKNESS IS 3/8"
THICK MIN. IF NOT USE CRL'S
1/2" THICK WELD BLOCKS

| | | |
|---------------|----------|-----|
| Revisions By: | | |
| △ | 03-30-26 | RPD |
| △ | 02-25-26 | AB |
| △ | 03/07/25 | JO |
| △ | 01-31-25 | AB |
| △ | 03-07-22 | RPD |

CRL

C.R. LAURENCE CO. ARCHITECTURAL PRODUCTS
2500 E. Vermont Avenue, Los Angeles, CA 90058-1897
PH (800)-421-6144 FX (800)-987-7501 www.crlaurence.com

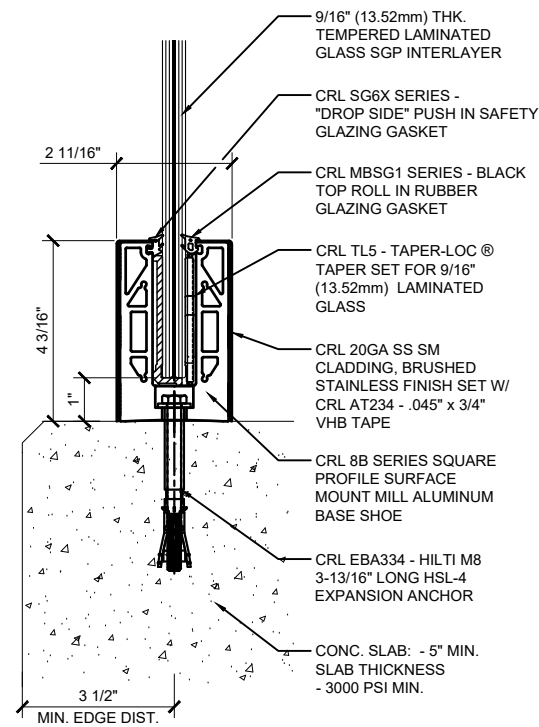
ICG **ES** ESR-3842

GRS
Description:
GLASS RAILING SYSTEM
FOR TEMPERED LAMINATED
9/16" (13.52mm), 1 1/16" (17.52mm),
1 3/16" (20.64mm) & 1 1/16" (25.52mm)
THK. GLASS

BASE SHOE OPTIONS
SURFACE & FASCIA MOUNT

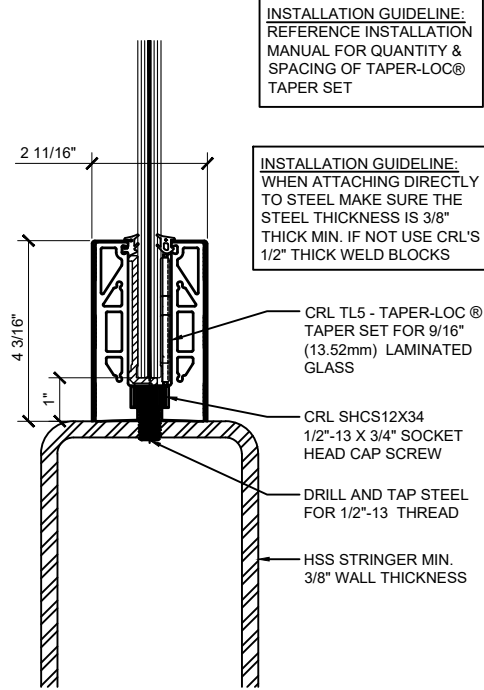
Drawn By: JG / RPD
Date: 12/03/2021
Scale: AS NOTED
File Name:
CRL GRS Laminated Glass Railing System.dwg

TYPICAL BASE SHOE ATTACHMENTS USING THE 8B SERIES BASE SHOE WITH TAPER-LOC® SYSTEM



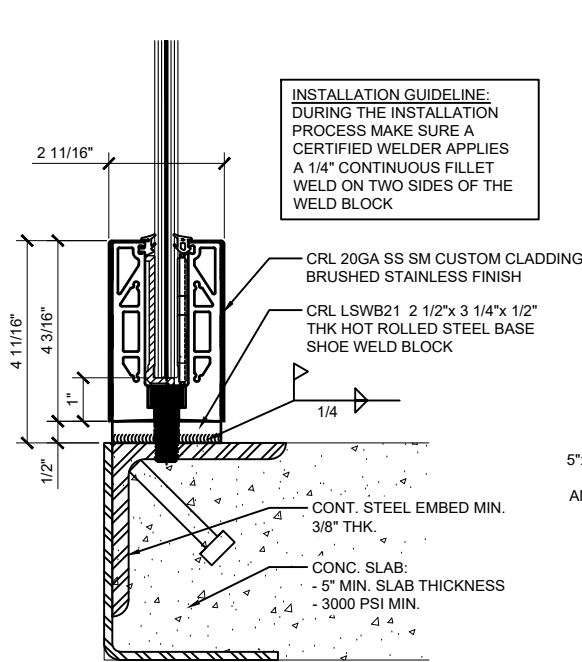
**SURFACE MOUNT DETAIL
CONCRETE SUBSTRATE**

ANCHOR SPACING WILL DEPEND ON MOUNTING
SUBSTRATE AND REGION OF PROJECT
11 13/16" (300MM) O.C. SPACING IS STANDARD



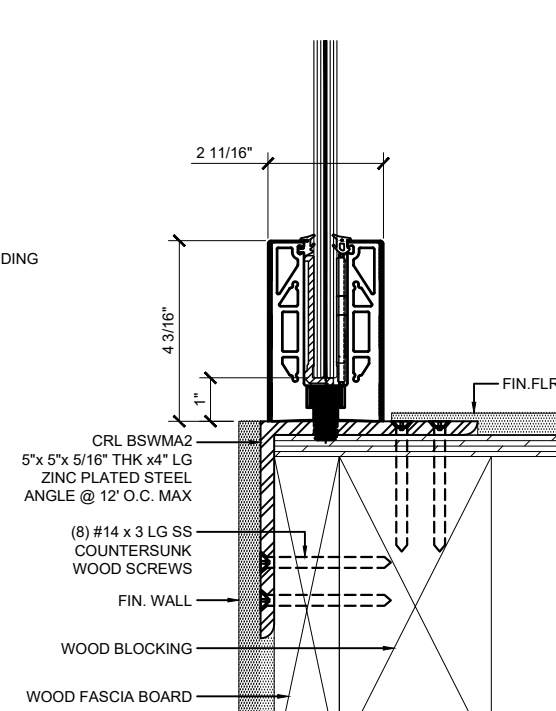
**SURFACE MOUNT DETAIL
STEEL SUBSTRATE**

11 13/16" (300MM) ON CENTER ANCHOR SPACING



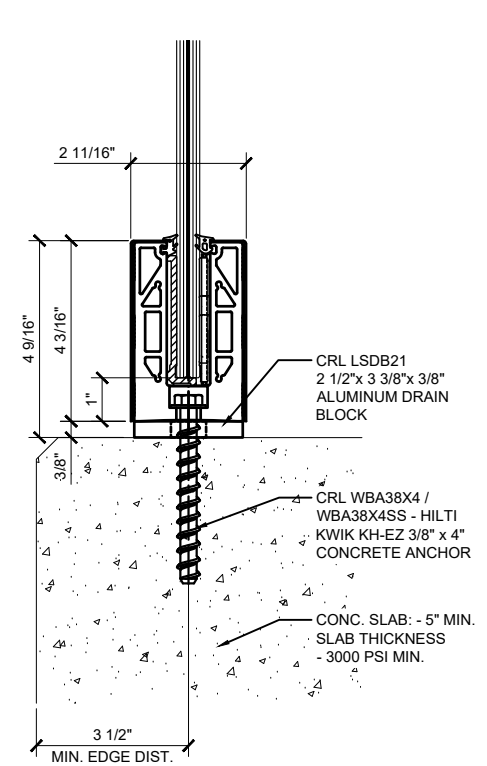
**SURFACE MOUNT DETAIL
STEEL SUBSTRATE W/ WELD BLOCK**

11 13/16" (300MM) ON CENTER ANCHOR SPACING



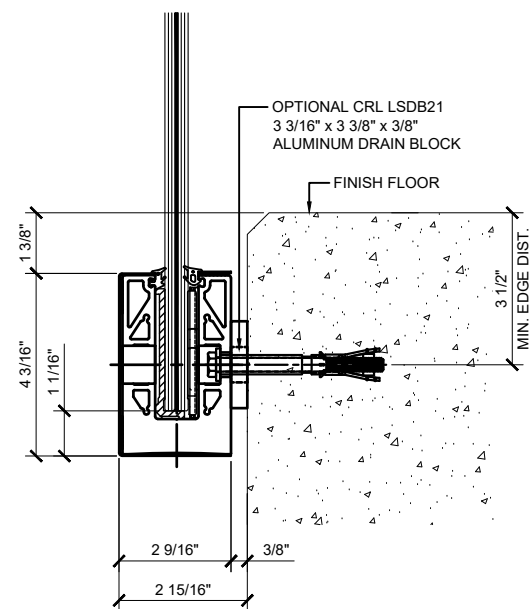
**SURFACE MOUNT DETAIL
WOOD SUBSTRATE**

11 13/16" (300MM) ON CENTER ANCHOR SPACING



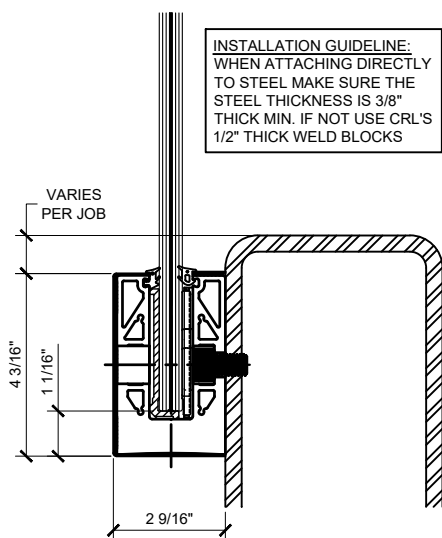
**SURFACE MOUNT DETAIL
CONCRETE SUBSTRATE W/ DRAIN BLOCK**

ANCHOR SPACING WILL DEPEND ON MOUNTING
SUBSTRATE AND REGION OF PROJECT
11 13/16" (300MM) O.C. SPACING IS STANDARD



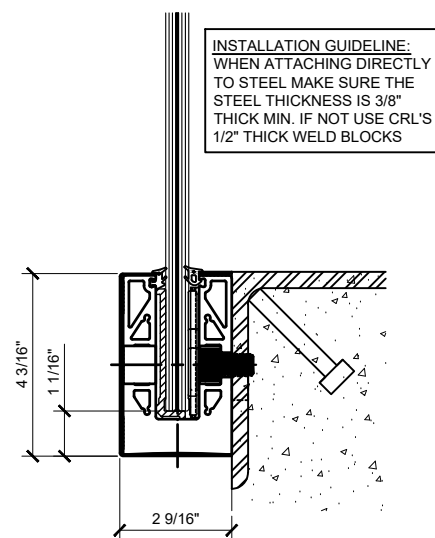
**FASCIA MOUNT DETAIL
CONCRETE SUBSTRATE**

ANCHOR SPACING WILL DEPEND ON MOUNTING
SUBSTRATE AND REGION OF PROJECT
11 13/16" (300MM) O.C. SPACING IS STANDARD



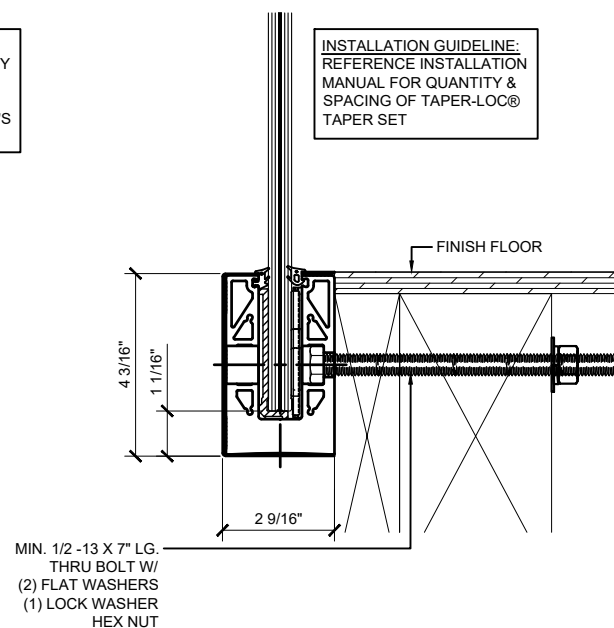
**FASCIA MOUNT DETAIL
STEEL SUBSTRATE**

11 13/16" (300MM) ON CENTER ANCHOR SPACING



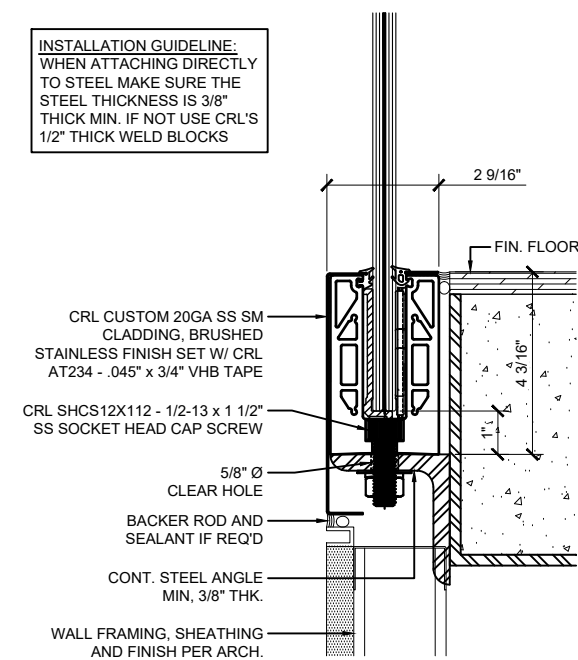
**FASCIA MOUNT DETAIL
STEEL SUBSTRATE**

11 13/16" (300MM) ON CENTER ANCHOR SPACING



**FASCIA MOUNT DETAIL
WOOD SUBSTRATE**

ANCHOR SPACING WILL DEPEND ON MOUNTING
SUBSTRATE AND REGION OF PROJECT
11 13/16" (300MM) O.C. SPACING IS STANDARD



**SURFACE MOUNT DETAIL
STEEL SUBSTRATE W/ CUSTOM CLADDING**

11 13/16" (300MM) ON CENTER ANCHOR SPACING

INSTALLATION GUIDELINE:
REFERENCE INSTALLATION
MANUAL FOR QUANTITY &
SPACING OF TAPER-LOC®
TAPER SET

INSTALLATION GUIDELINE:
WHEN ATTACHING DIRECTLY
TO STEEL MAKE SURE THE
STEEL THICKNESS IS 3/8"
THICK MIN. IF NOT USE CRL'S
1/2" THICK WELD BLOCKS

INSTALLATION GUIDELINE:
DURING THE INSTALLATION
PROCESS MAKE SURE A
CERTIFIED WELDER APPLIES
A 1/4" CONTINUOUS FILLET
WELD ON TWO SIDES OF THE
WELD BLOCK

INSTALLATION GUIDELINE:
WHEN ATTACHING DIRECTLY
TO STEEL MAKE SURE THE
STEEL THICKNESS IS 3/8"
THICK MIN. IF NOT USE CRL'S
1/2" THICK WELD BLOCKS

INSTALLATION GUIDELINE:
WHEN ATTACHING DIRECTLY
TO STEEL MAKE SURE THE
STEEL THICKNESS IS 3/8"
THICK MIN. IF NOT USE CRL'S
1/2" THICK WELD BLOCKS

INSTALLATION GUIDELINE:
REFERENCE INSTALLATION
MANUAL FOR QUANTITY &
SPACING OF TAPER-LOC®
TAPER SET

INSTALLATION GUIDELINE:
WHEN ATTACHING DIRECTLY
TO STEEL MAKE SURE THE
STEEL THICKNESS IS 3/8"
THICK MIN. IF NOT USE CRL'S
1/2" THICK WELD BLOCKS

| | | |
|---------------|----------|-----|
| Revisions By: | | |
| △ | 03-30-26 | RPD |
| △ | 02-25-26 | AB |
| △ | 03/07/25 | JO |
| △ | 01-31-25 | AB |
| △ | 03-07-22 | RPD |

CRL

C.R. LAURENCE CO. ARCHITECTURAL PRODUCTS
2500 E. Vermont Avenue, Los Angeles, CA 90058-1897
PH (800)-421-6144 FX (800)-987-7301 www.crlaurence.com

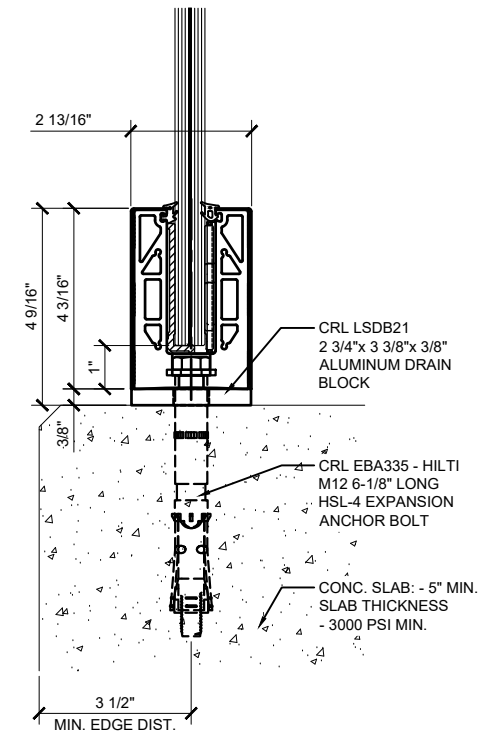
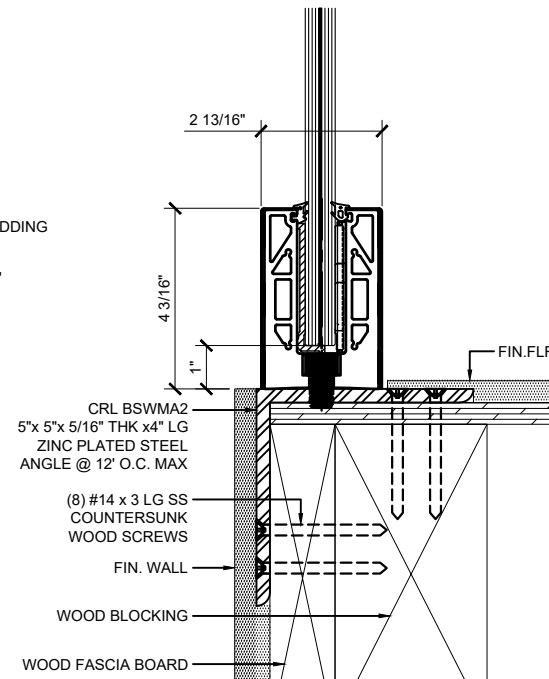
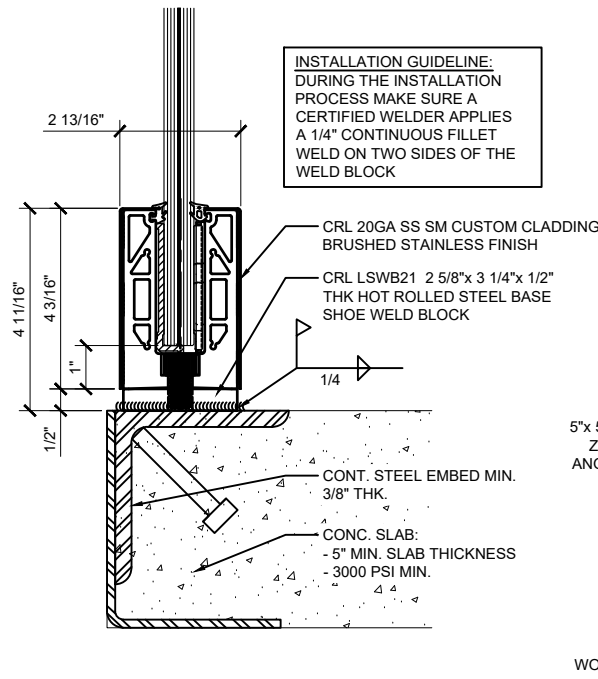
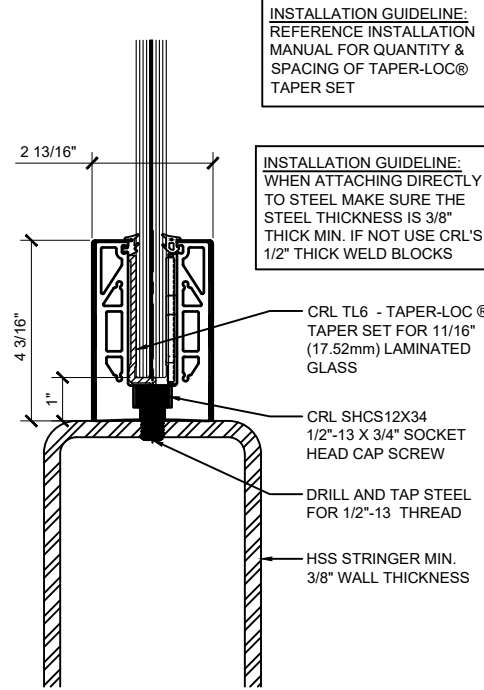
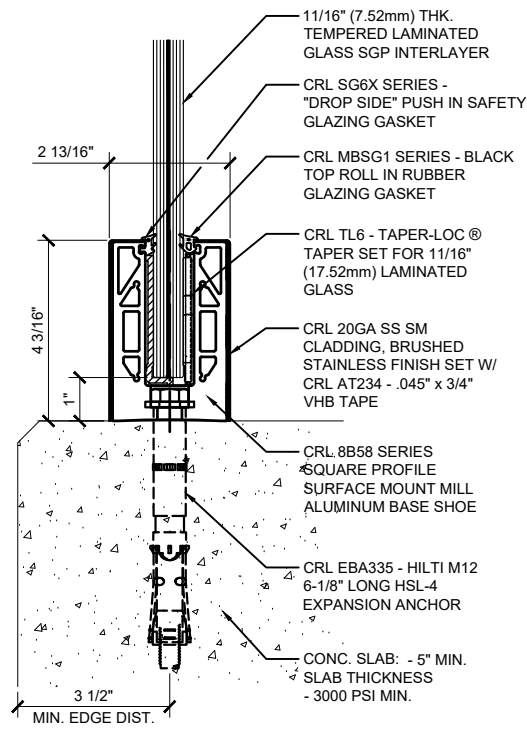
ICC ESR-3842

Description:
GRS
GLASS RAILING SYSTEM
FOR TEMPERED LAMINATED
9/16" (13.52mm), 1 1/16" (17.52mm),
1 3/16" (20.64mm) & 1 1/8" (25.52mm)
THK. GLASS

BASE SHOE OPTIONS
SURFACE & FASCIA MOUNT

Drawn By: JG / RPD
Date: 12/03/2021
Scale: AS NOTED
File Name:
CRL GRS Laminated Glass Railing System.dwg
Sheet

TYPICAL BASE SHOE ATTACHMENTS USING THE 8B58 SERIES BASE SHOE WITH TAPER-LOC® SYSTEM



SURFACE MOUNT DETAIL CONCRETE SUBSTRATE

ANCHOR SPACING WILL DEPEND ON MOUNTING SUBSTRATE AND REGION OF PROJECT
 11 13/16" (300MM) O.C. SPACING IS STANDARD

SURFACE MOUNT DETAIL STEEL SUBSTRATE

11 13/16" (300MM) ON CENTER ANCHOR SPACING

SURFACE MOUNT DETAIL STEEL SUBSTRATE W/ WELD BLOCK

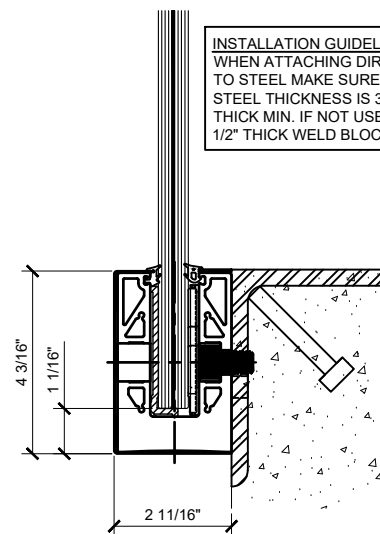
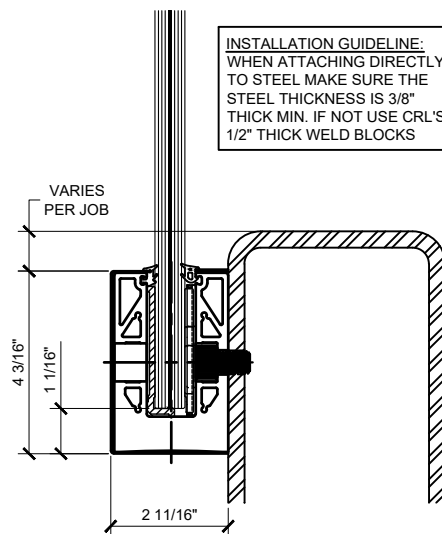
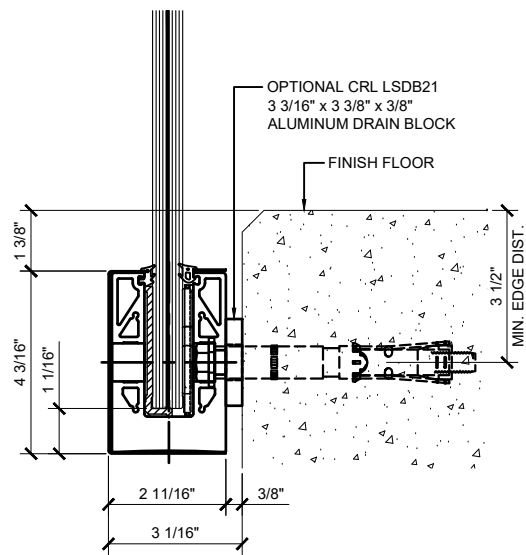
11 13/16" (300MM) ON CENTER ANCHOR SPACING

SURFACE MOUNT DETAIL WOOD SUBSTRATE

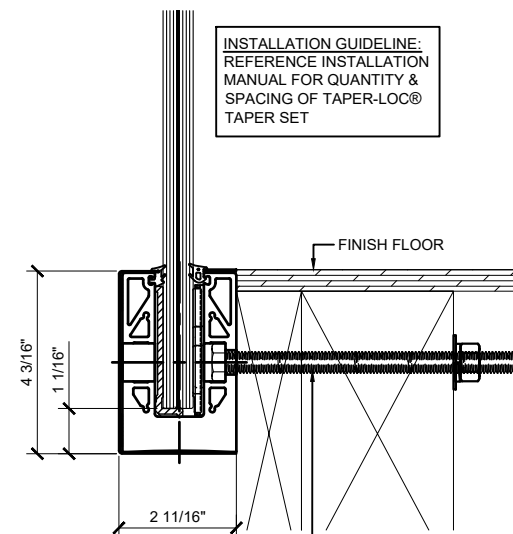
11 13/16" (300MM) ON CENTER ANCHOR SPACING

SURFACE MOUNT DETAIL CONCRETE SUBSTRATE W/ DRAIN BLOCK

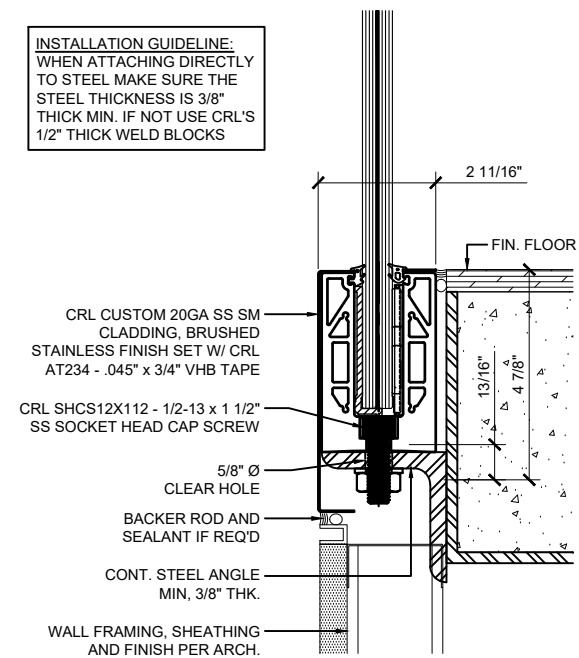
ANCHOR SPACING WILL DEPEND ON MOUNTING SUBSTRATE AND REGION OF PROJECT
 11 13/16" (300MM) O.C. SPACING IS STANDARD



MIN. 1/2 - 13 X 7" LG. THRU BOLT W/ (2) FLAT WASHERS (1) LOCK WASHER HEX NUT



INSTALLATION GUIDELINE: WHEN ATTACHING DIRECTLY TO STEEL MAKE SURE THE STEEL THICKNESS IS 3/8" THICK MIN. IF NOT USE CRL'S 1/2" THICK WELD BLOCKS



FASCIA MOUNT DETAIL CONCRETE SUBSTRATE

ANCHOR SPACING WILL DEPEND ON MOUNTING SUBSTRATE AND REGION OF PROJECT
 11 13/16" (300MM) O.C. SPACING IS STANDARD

FASCIA MOUNT DETAIL STEEL SUBSTRATE

11 13/16" (300MM) ON CENTER ANCHOR SPACING

FASCIA MOUNT DETAIL STEEL SUBSTRATE

11 13/16" (300MM) ON CENTER ANCHOR SPACING

FASCIA MOUNT DETAIL WOOD SUBSTRATE

ANCHOR SPACING WILL DEPEND ON MOUNTING SUBSTRATE AND REGION OF PROJECT
 11 13/16" (300MM) O.C. SPACING IS STANDARD

SURFACE MOUNT DETAIL STEEL SUBSTRATE W/ CUSTOM CLADDING

11 13/16" (300MM) ON CENTER ANCHOR SPACING

| | | |
|---------------|----------|-----|
| Revisions By: | | |
| △ | 03-30-26 | RPD |
| △ | 02-25-26 | AB |
| △ | 03/07/25 | JO |
| △ | 01-31-25 | AB |
| △ | 03-07-22 | RPD |

CRL
 C.R. LAURENCE CO. ARCHITECTURAL PRODUCTS
 2500 E. Vermont Avenue, Los Angeles, CA 90058-1897
 PH: (800)-421-6144 FX: (800)-987-7301 www.crlaurence.com

ICC ESR-3842

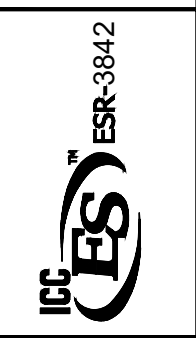
GRS
 GLASS RAILING SYSTEM FOR TEMPERED LAMINATED
 9/16" (13.52mm), 1 1/16" (17.52mm), 1 3/16" (20.64mm) & 1 1/2" (25.52mm) THK. GLASS

BASE SHOE OPTIONS SURFACE & FASCIA MOUNT

Drawn By: JG / RPD
 Date: 12/03/2021
 Scale: AS NOTED
 File Name: CRL GRS Laminated Glass Railing System.dwg
 Sheet

| | | |
|---------------|----------|-----|
| Revisions By: | | |
| △ | 03-30-26 | RPD |
| △ | 02-25-26 | AB |
| △ | 03/07/25 | JO |
| △ | 01-31-25 | AB |
| △ | 03-07-22 | RPD |

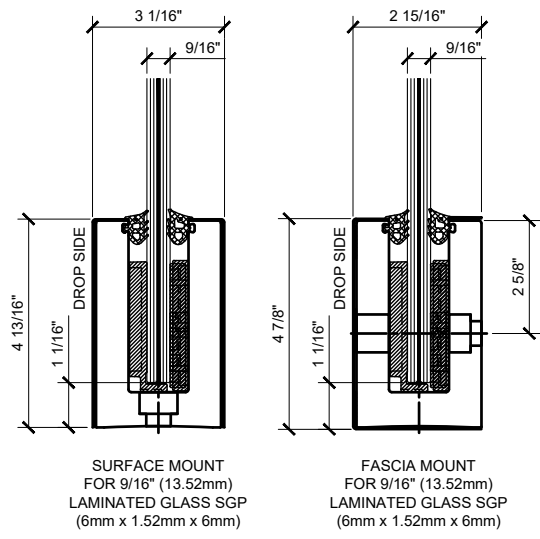
CRL
 C.R. LAURENCE CO. ARCHITECTURAL PRODUCTS
 2500 E. Vermont Avenue, Los Angeles, CA 90058-1897
 PH (800)-421-6144 FX (800)-987-7301 www.crlaurence.com



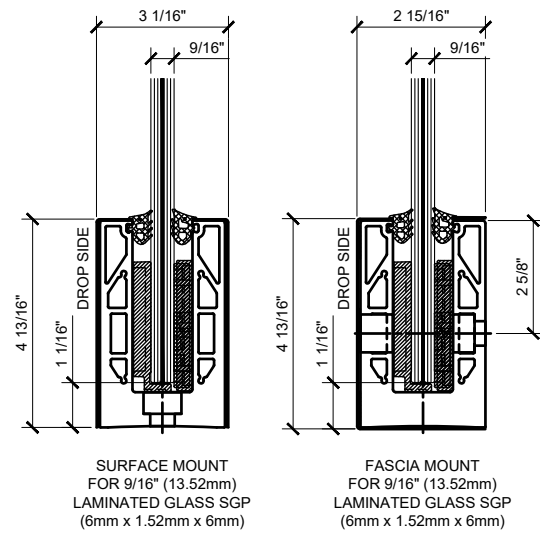
GRS
 Description: GLASS RAILING SYSTEM FOR TEMPERED LAMINATED 9/16" (13.52mm), 1 1/16" (17.52mm), 1 3/16" (20.64mm) & 1 1/8" (25.52mm) THK. GLASS

BASE SHOE OPTIONS

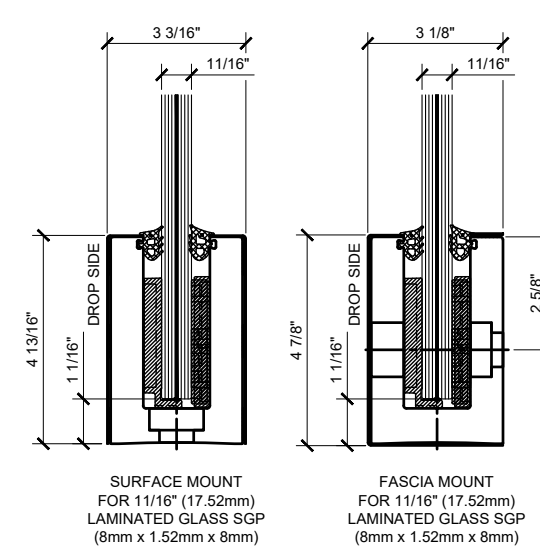
Drawn By: JG / RPD
 Date: 12/03/2021
 Scale: AS NOTED
 File Name: CRL GRS Laminated Glass Railing System.dwg



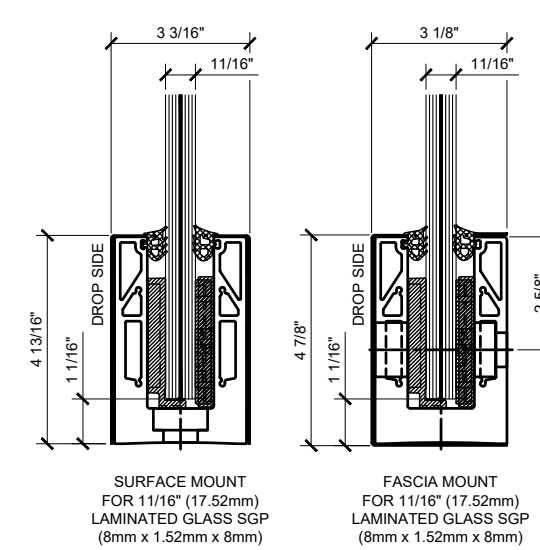
L56S SERIES BASE SHOE
 LTL96X1 TAPER-LOC®



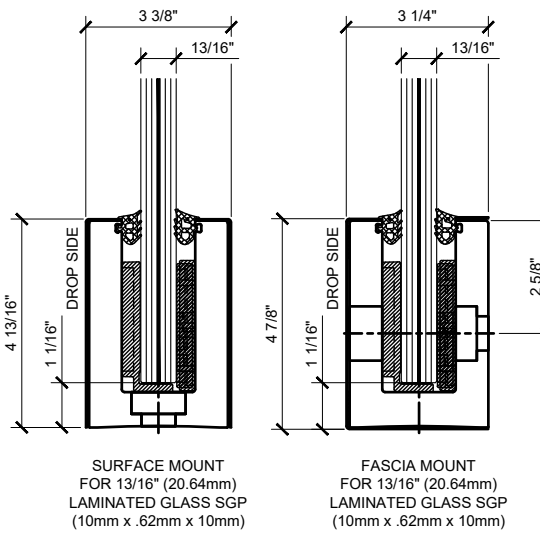
9BL56 SERIES BASE SHOE
 LTL96X1 TAPER-LOC®



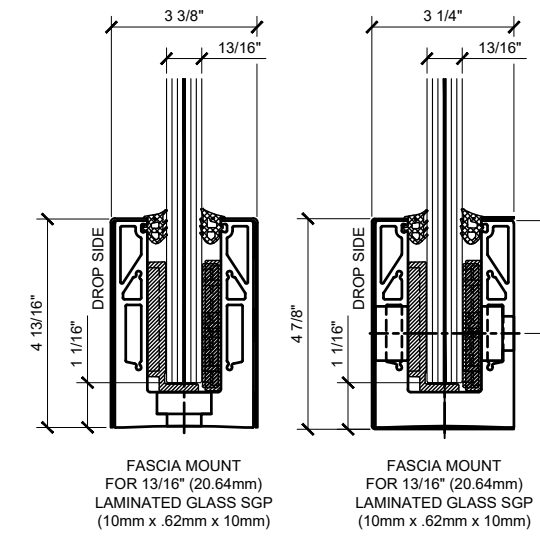
L68S SERIES BASE SHOE
 LTL96X1 TAPER-LOC®



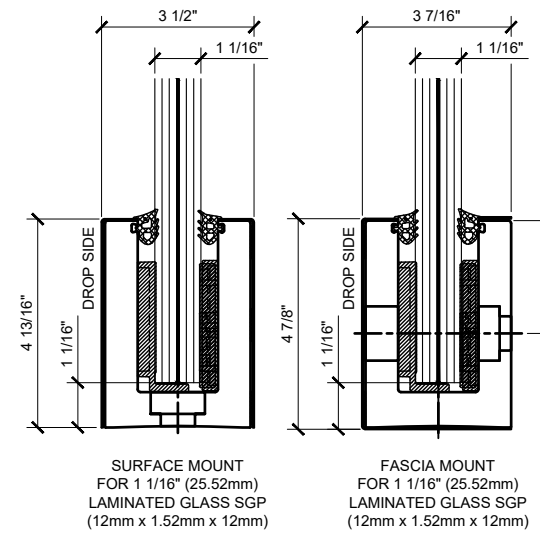
9BL68 SERIES BASE SHOE
 LTL96X1 TAPER-LOC®



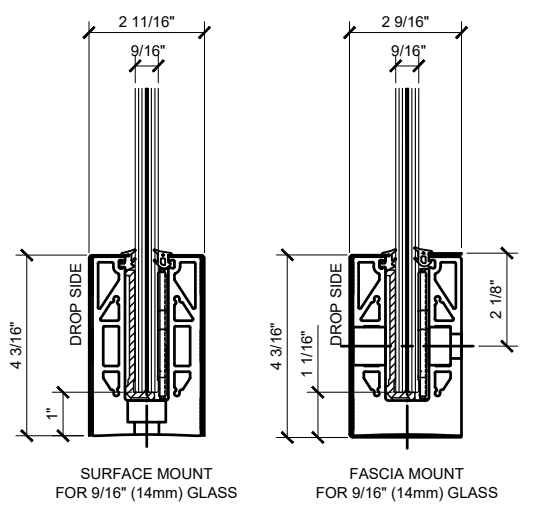
L21S SERIES BASE SHOE
 LTL10X1 TAPER-LOC®



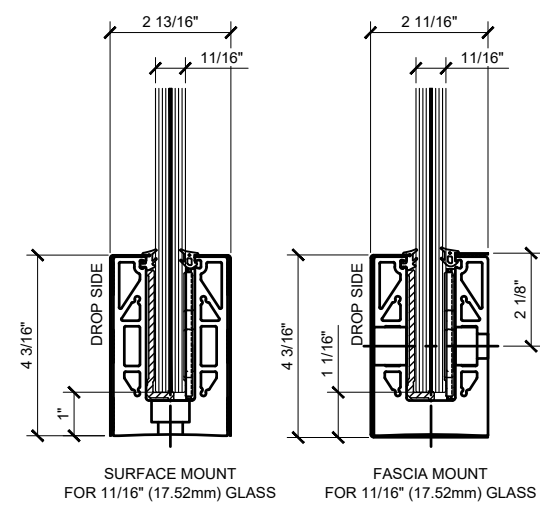
9BL21 SERIES BASE SHOE
 LTL10X1 TAPER-LOC®



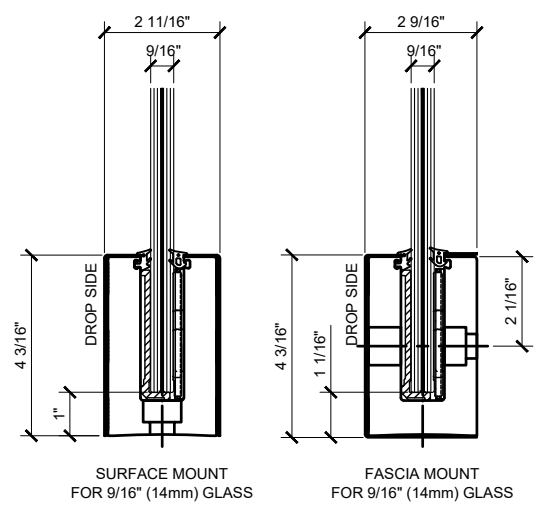
L25S SERIES BASE SHOE
 LTL10X1 TAPER-LOC®



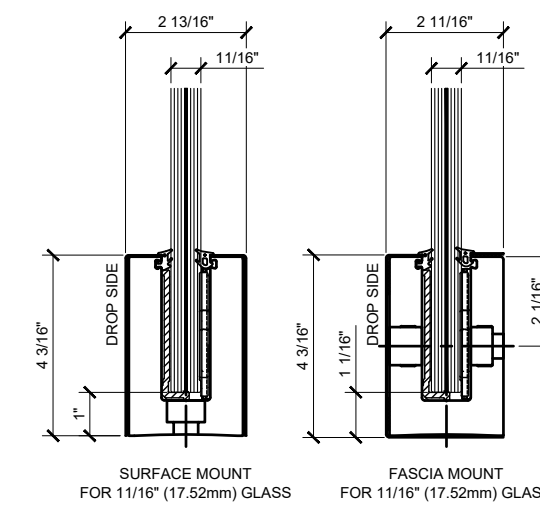
8B SERIES BASE SHOE
 TL5 TAPER-LOC



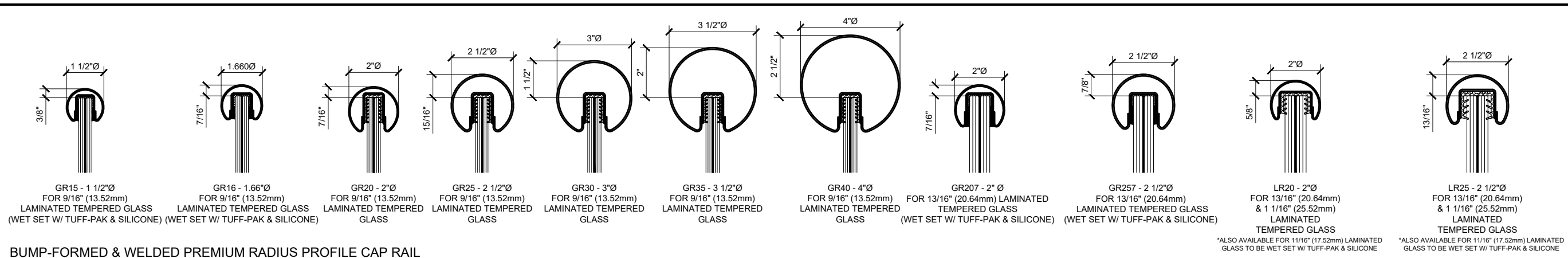
8B58 SERIES BASE SHOE
 TL6 TAPER-LOC



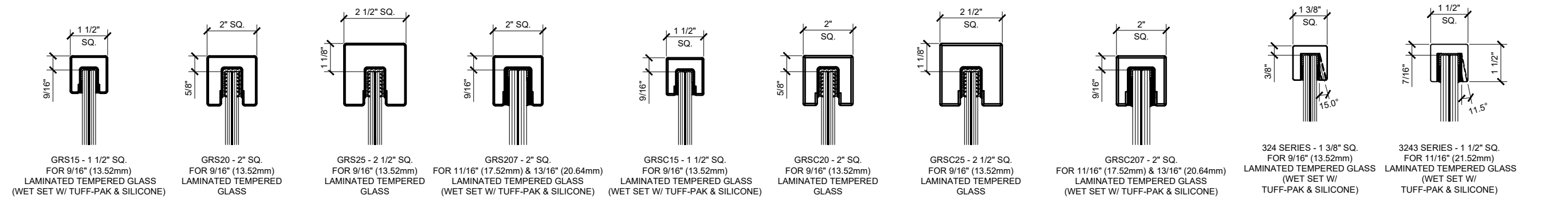
B5S SERIES BASE SHOE
 TL5 TAPER-LOC



B6N SERIES BASE SHOE
 TL6 TAPER-LOC



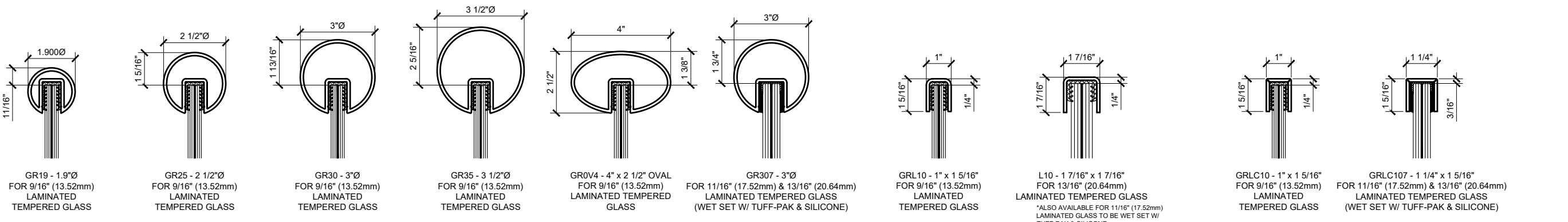
BUMP-FORMED & WELDED PREMIUM RADIUS PROFILE CAP RAIL



BUMP-FORMED & WELDED PREMIUM SQUARE PROFILE CAP RAIL

SQUARE PROFILE CRISP CORNER CAP RAIL

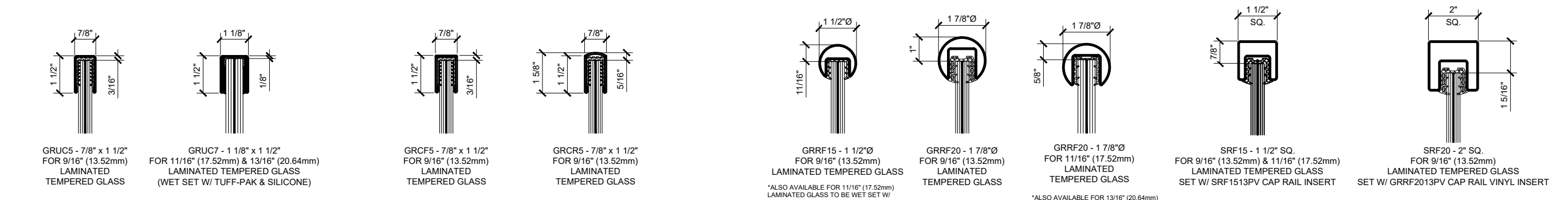
BLUMCRAFT® EXTRUDED SOLID ALUM. CAP RAIL



EXTRUDED ALUMINUM CAP RAIL

LOW PROFILE 11 GAUGE CAP RAIL

LOW PROFILE 11 GAUGE CRISP CORNER CAP RAIL



U-CHANNEL 18 GAUGE CAP RAIL

U-CHANNEL 18 GAUGE CRISP CORNER CAP RAIL

ROLL-FORMED CAP RAIL

Revisions By:

| | | |
|---|----------|-----|
| △ | 03-30-26 | RPD |
| △ | 02-25-26 | AB |
| △ | 03/07/25 | JO |
| △ | 01-31-25 | AB |
| △ | 03-07-22 | RPD |

CRL
C.R. LAURENCE CO. ARCHITECTURAL PRODUCTS
2500 E. Vermont Avenue, Los Angeles, CA 90058-1897
PH: (800)-421-6144 FX: (800)-987-7501 www.crlaurence.com

ICC ESR-3842

GRS
Description:
GLASS RAILING SYSTEM
FOR TEMPERED LAMINATED
9/16" (13.52mm), 1 1/16" (17.52mm),
1 3/16" (20.64mm) & 1 1/16" (25.52mm)
THK. GLASS

CAP RAIL OPTIONS

Drawn By: JG / RPD
Date: 12/03/2021
Scale: AS NOTED
File Name:
CRL GRS Laminated Glass Railing System.dwg