

Shower Door Hinges

BELLAGIO

Glass-to-Glass Bracket	4A -1
Wall Mount Bracket	4A-3
Wall Mount Offset Backplate Hinge	4A-5
Glass-to-Glass 180° Hinge	4A-7

COMO

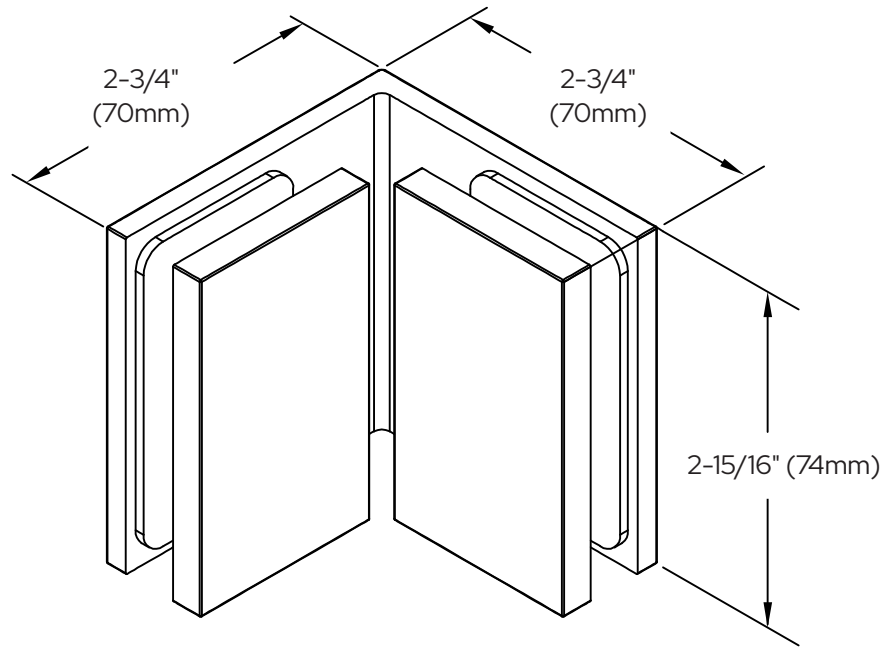
Wall Mount Offset Backplate Hinge	4A-9
90° Glass-to-Glass Bracket	4A-11
Wall Mount Bracket	4A-13
Glass-to-Glass 180° Hinge	4A-15

LUGANO

90° Glass-to-Glass Bracket	4A-17
Glass-to-Glass 180° Hinge	4A-19
Wall Mount Outswing Hinge	4A-21
Wall Mount Bracket	4A-23



*** SEE TEMPLATE ON BACK ***
Refer to Dimensions Shown
to Ensure Accuracy



Specifications:

Material:	Solid brass
Glass Thickness Range:	5/16" (8mm) to 3/8" (10mm)
Hole Size Required:	5/8" (16mm)
Includes:	Mounting, screws and gaskets

BELLAGIO

Glass-to-Glass Bracket

CAT. NO. BEL090

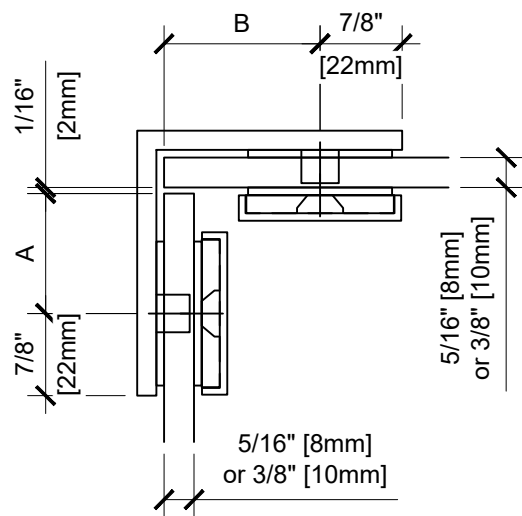
***NOTE:** Do not exceed either maximum weight or width when choosing proper quantity of hinges.

For Technical Assistance in the United States and Canada 1.800.421.6144. Press 2, then option 1

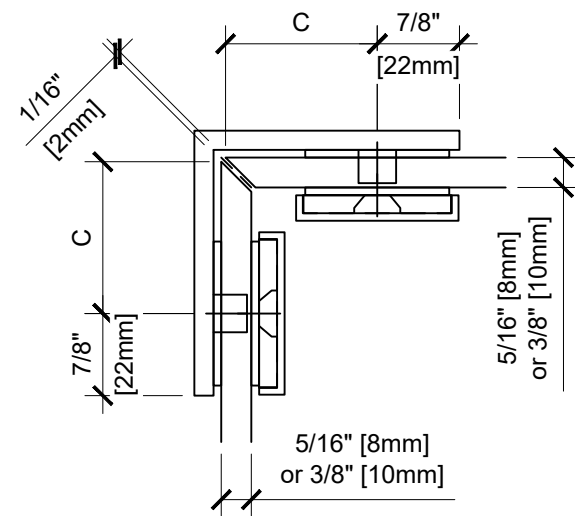
C.R. Laurence Co., Inc. • 2503 E. Vernon Ave., Los Angeles, CA 90058 • 1.800.421.6144 • crlaurence.com

4A-1

© Copyright 2022, C.R. Laurence Co., Inc_SDT22_22

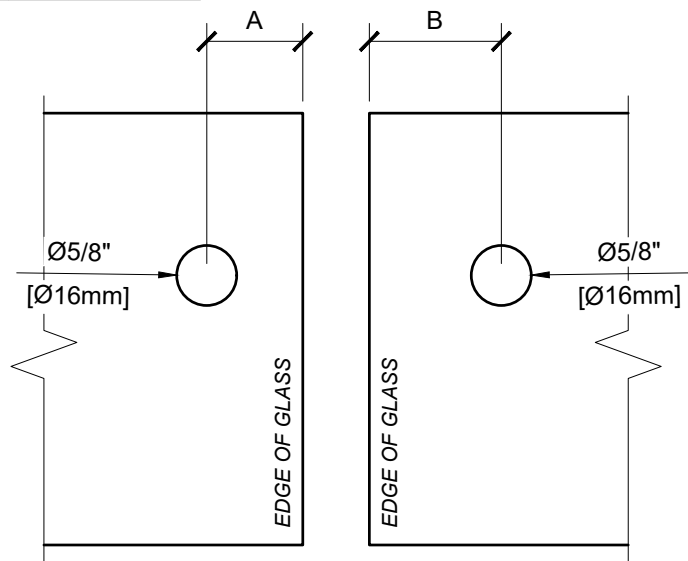


OVERLAP GLASS CUTOUT

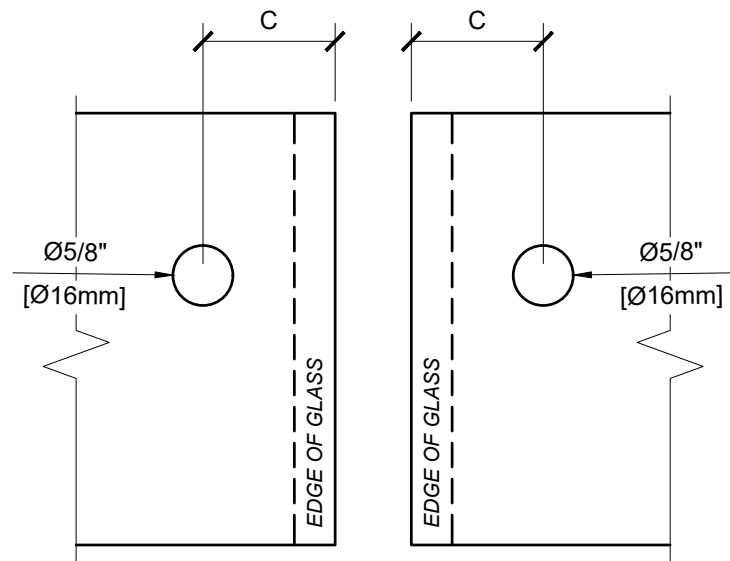


MITER GLASS CUTOUT

GLASS	5/16" [8mm]	3/8" [10mm]
A	1 1/4" [32mm]	1 3/16" [30mm]
B	1 5/8" [41mm]	1 5/8" [41mm]
C	1 9/16" [40mm]	1 9/16" [40mm]



GLASS CUTOUT

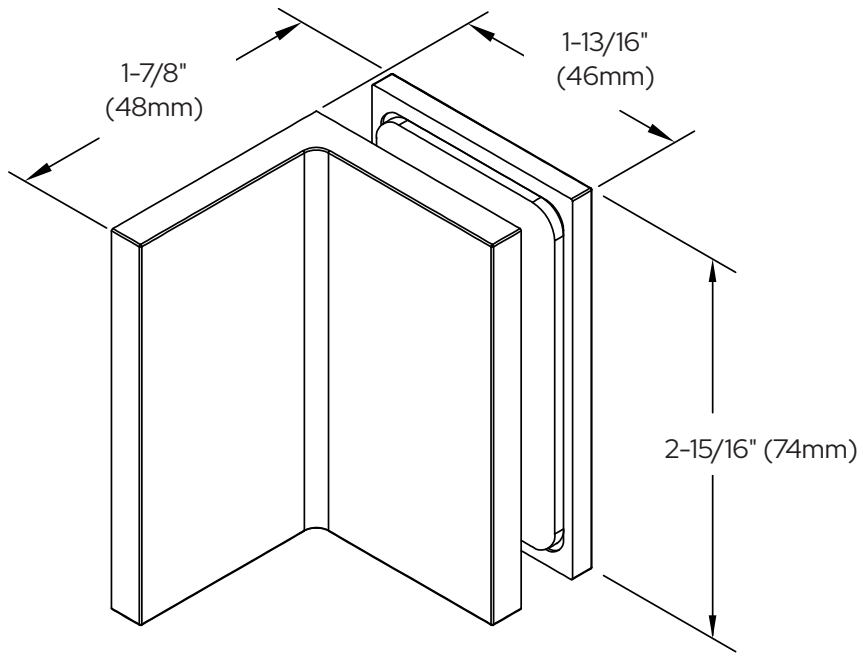


GLASS CUTOUT

BELLAGIO
Glass-to-Glass Bracket
CAT. NO. BEL090



*** SEE TEMPLATE ON BACK ***
Refer to Dimensions Shown
to Ensure Accuracy



Specifications:

Material:	Solid brass
Glass Thickness Range:	5/16" (8mm) to 3/8" (10mm)
Hole Size Required:	5/8" (16mm)
Includes:	Mounting, screws and gaskets

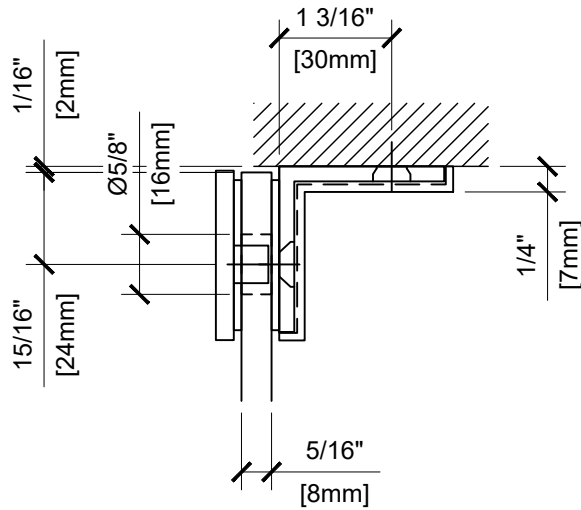
BELLAGIO

Wall Mount Bracket

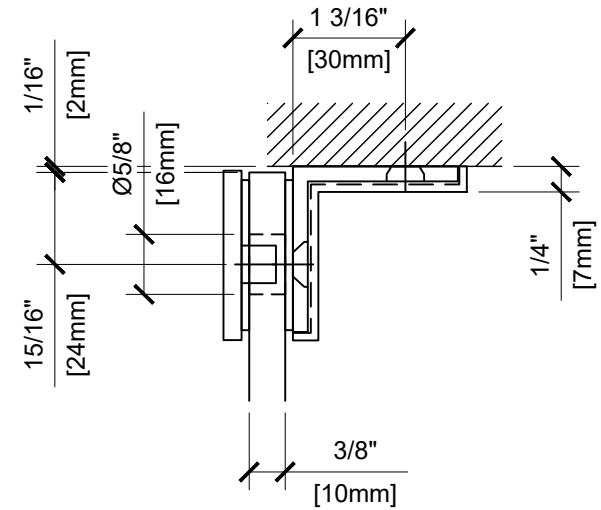
CAT. NO. BEL90S

For Technical Assistance in the United States and Canada 1.800.421.6144. Press 2, then option 1

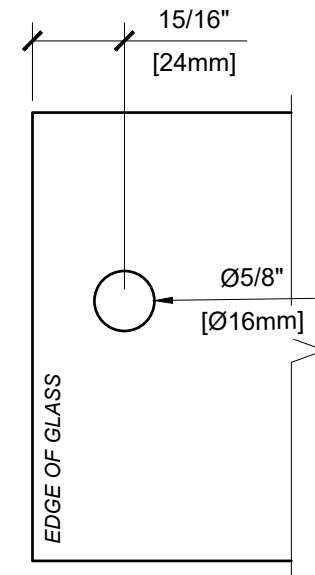
C.R. Laurence Co., Inc. • 2503 E. Vernon Ave., Los Angeles, CA 90058 • 1.800.421.6144 • crlaurence.com



WALL BRACKET (5/16" GLASS)



WALL BRACKET (3/8" GLASS)

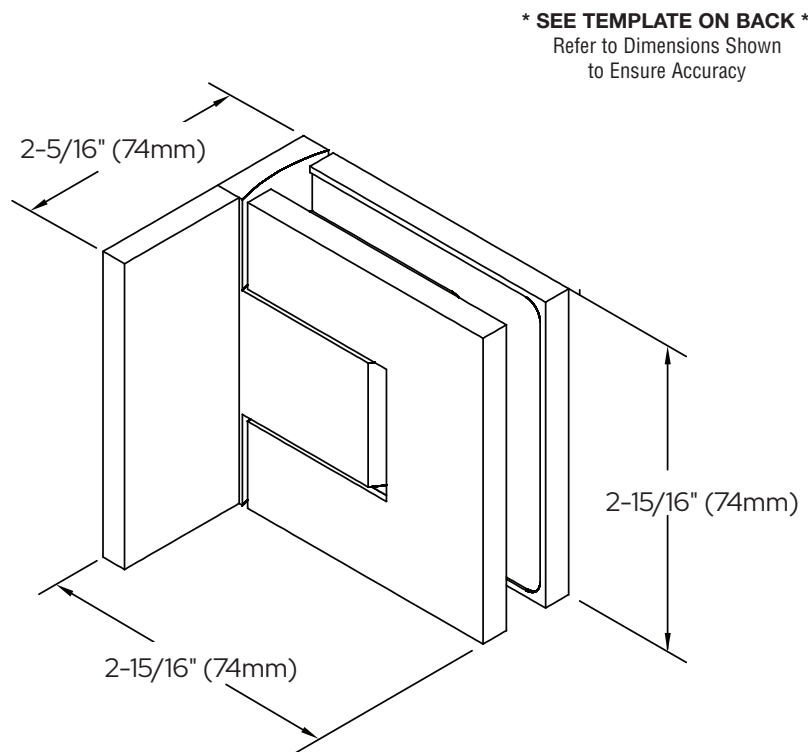


GLASS CUTOUT

BELLAGIO

Wall Mount Bracket

CAT. NO. BEL90S



BELLAGIO

Wall Mount Offset Backplate Hinge

CAT. NO. BEL344

Important Information:

1). This is a double acting self-centering hinge and it adjusts to accommodate a desired door angle up to 90°, after the door is installed. This is achieved by loosening the two Allen set screws (located in the center block), moving the door to the desired position, and then tightening the set screws. The self-centering position has now been changed to the angle you desire.

Specifications:

Glass Sizes:	5/16" (8mm) to 3/8" (10mm) thick tempered safety glass
Construction:	Solid brass
Closing Type:	Self-centering when within 25° of closed position
Cutout Required	
Includes:	Gaskets, screws and template

Maximum Door Capacities

Two Hinges

Maximum Door Weight:	110 lbs.(50 kg)
Maximum Door Width:	39-3/8"(1000mm)

Use of Gaskets:

For 5/16"(8mm) Glass: Use one thick gasket on each side

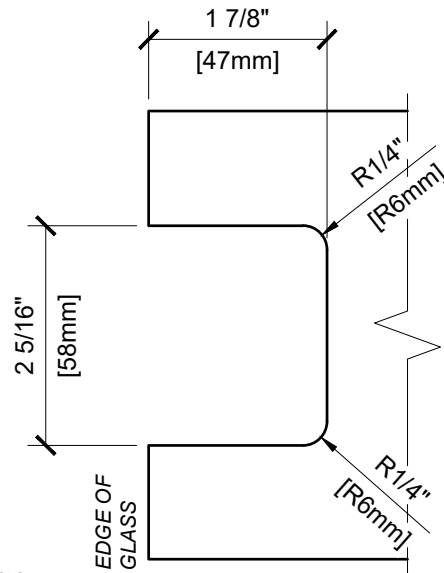
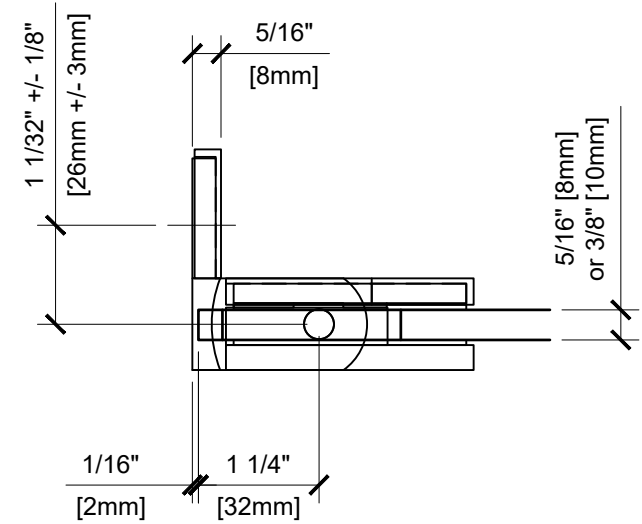
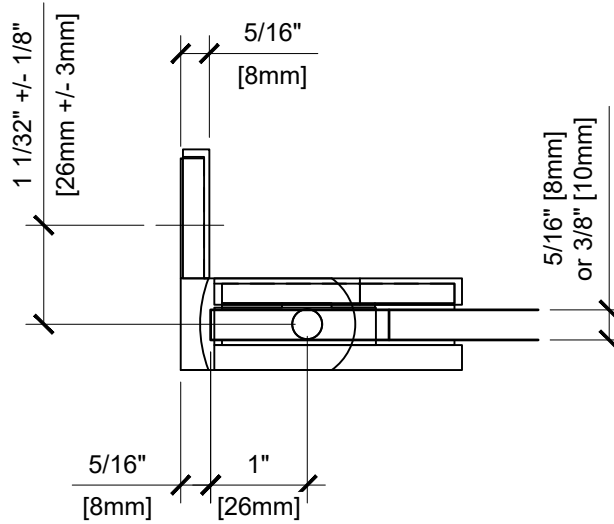
For 3/8"(10mm) Glass: Use one thin gasket on each side

Recommendations:

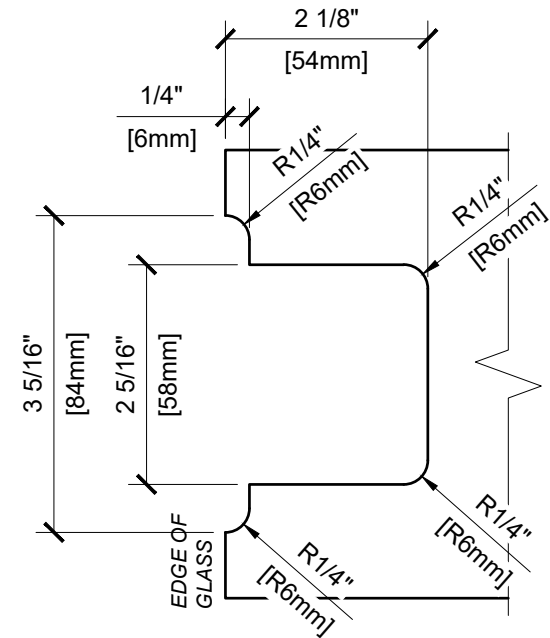
For public safety, we recommend the use of only tempered safety glass. Do not use power tools when installing these hinges.

Maintenance Guidelines:

- Never use an abrasive cleaner on the hardware. Many of the components are coated with a clear lacquer that will be irreparably damaged if subjected to harsh, abrasive chemicals. Advise your customer that drying the hardware with a clean, soft towel on a daily basis is the best way to maintain the hardware. If mineral deposits build-up, mix a couple of drops of a mild liquid soap (such as Ivory or a similar product) into a cup of warm water. Using a soft, non-abrasive cloth, clean the hardware. Rinse thoroughly with clean, warm water and dry.



STANDARD GLASS CUTOUT



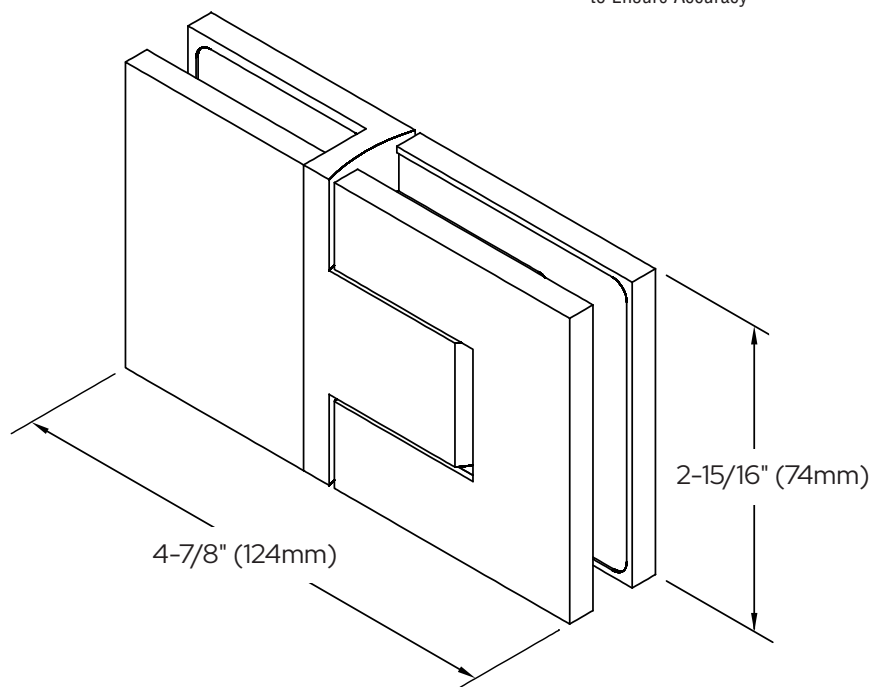
TIGHT CLEARANCE GLASS CUTOUT

BELLAGIO

Wall Mount Offset Backplate Hinge

CAT. NO. BEL344

*** SEE TEMPLATE ON BACK ***
Refer to Dimensions Shown
to Ensure Accuracy



BELLAGIO

Glass-to-Glass 180° Hinge

CAT. NO. BEL380

Important Information:

1). This is a double acting self-centering hinge and it adjusts to accommodate a desired door angle up to 90°, after the door is installed. This is achieved by loosening the two Allen set screws (located in the center block), moving the door to the desired position, and then tightening the set screws. The self-centering position has now been changed to the angle you desire.

Specifications:

Glass Sizes:	5/16" (8mm) to 3/8" (10mm) thick tempered safety glass
Construction:	Solid brass
Closing Type:	Self-centering when within 25° of closed position
Cutout Required	
Includes:	Gaskets, screws and template

Maximum Door Capacities

Two Hinges

Maximum Door Weight:	110 lbs. (50 kg)
Maximum Door Width:	39" (1000mm)

Use of Gaskets:

For 5/16" (8mm) Glass: Use one thick gasket on each side

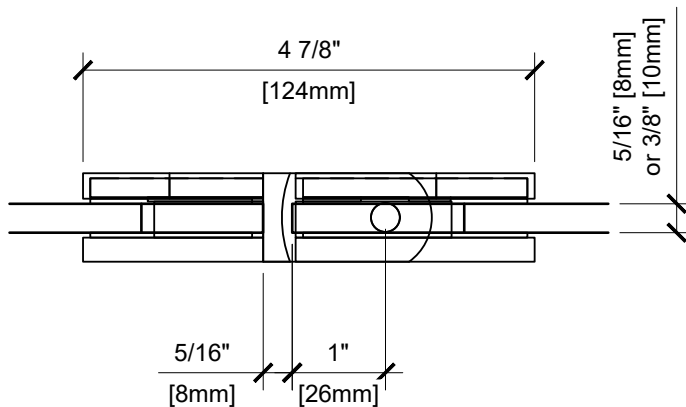
For 3/8" (10mm) Glass: Use one thin gasket on each side

Recommendations:

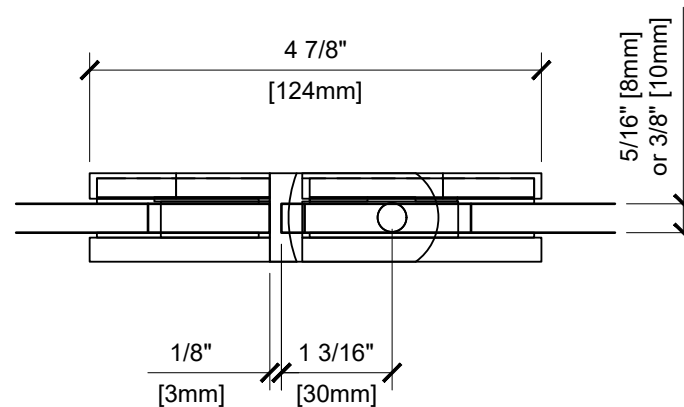
For public safety, we recommend the use of only tempered safety glass. Do not use power tools when installing these hinges.

Maintenance Guidelines:

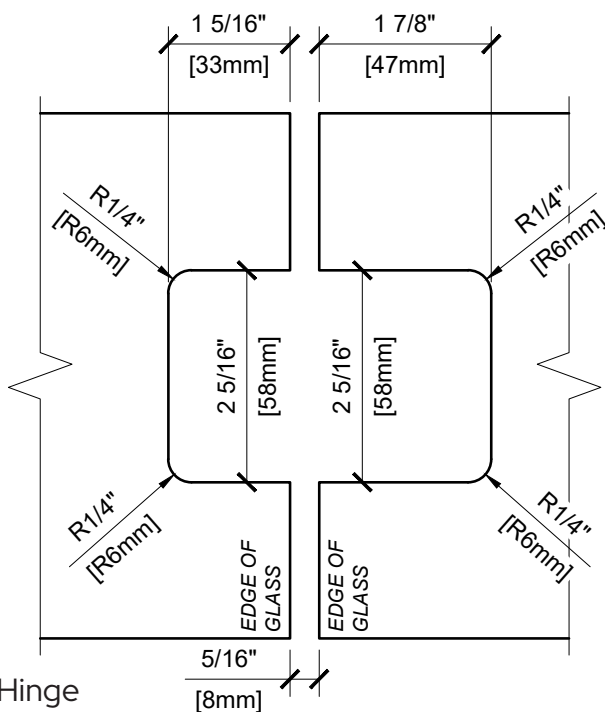
- Never use an abrasive cleaner on the hardware. Many of the components are coated with a clear lacquer that will be irreparably damaged if subjected to harsh, abrasive chemicals. Advise your customer that drying the hardware with a clean, soft towel on a daily basis is the best way to maintain the hardware. If mineral deposits build-up, mix a couple of drops of a mild liquid soap (such as Ivory or a similar product) into a cup of warm water. Using a soft, non-abrasive cloth, clean the hardware. Rinse thoroughly with clean, warm water and dry.



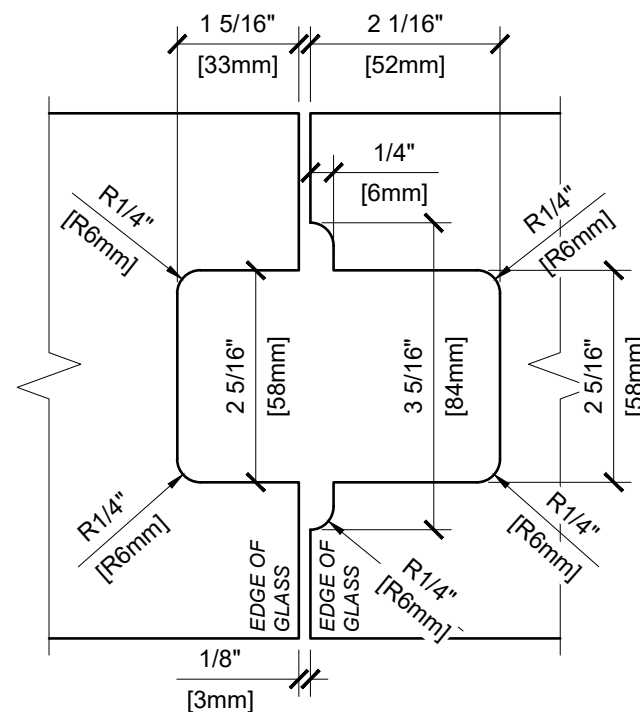
TYP. GLASS CUTOUT



TIGHT CLEARANCE GLASS CUTOUT



STANDARD GLASS CUTOUT



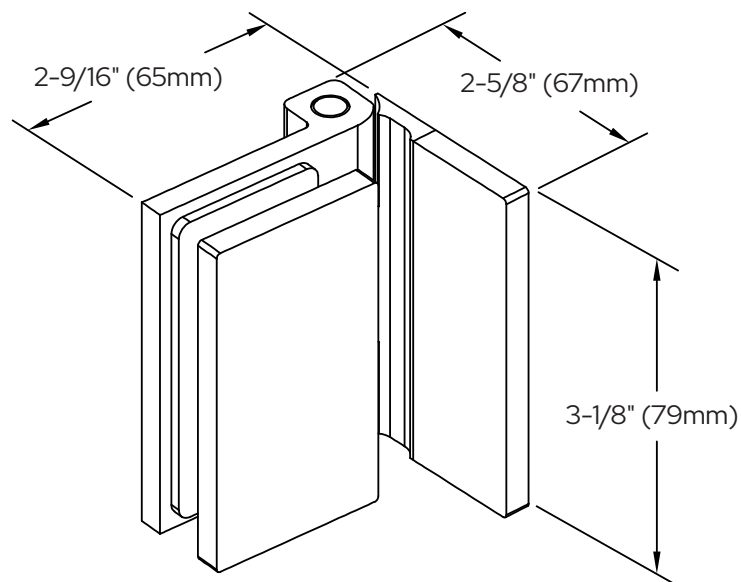
TIGHT CLEARANCE GLASS CUTOUT

BELLAGIO

Glass-to-Glass 180° Hinge

CAT. NO. BEL380

*** SEE TEMPLATE ON BACK ***
Refer to Dimensions Shown
to Ensure Accuracy



COMO

Wall Mount Offset Backplate Hinge

CAT. NO. COM044

Important Information:

1). This is a one-direction hinge and is designed for an outswing application only. A door strike is required so the door isn't allowed to swing inward and damage the door glass.

Specifications:

Glass Sizes:	5/16" (8mm) to 3/8" (10mm) thick tempered safety glass
Construction:	Solid brass
Cutout Required	
Includes:	Gaskets, screws and template

Maximum Door Capacities

Two Hinges

Maximum Door Weight:	110 lbs. (50 kg)
Maximum Door Width:	39" (1000mm)

Use of Gaskets:

For 5/16" (8mm) Glass: Use one thick gasket on each side

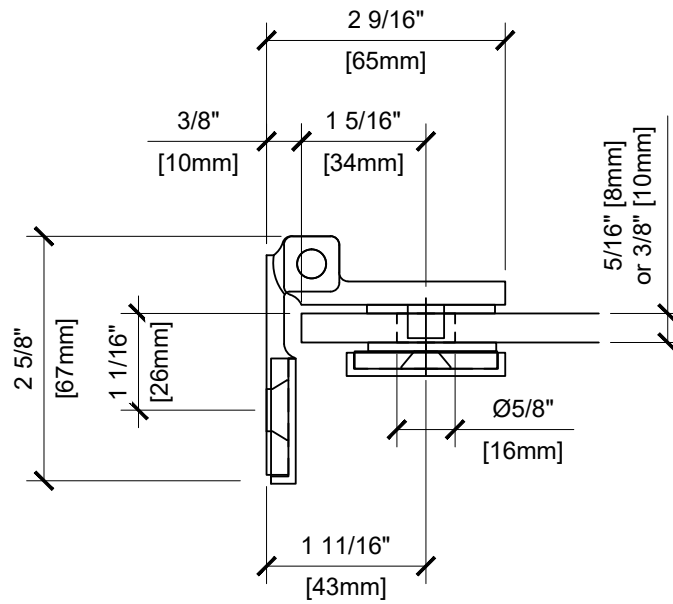
For 3/8" (10mm) Glass: Use one thin gasket on each side

Recommendations:

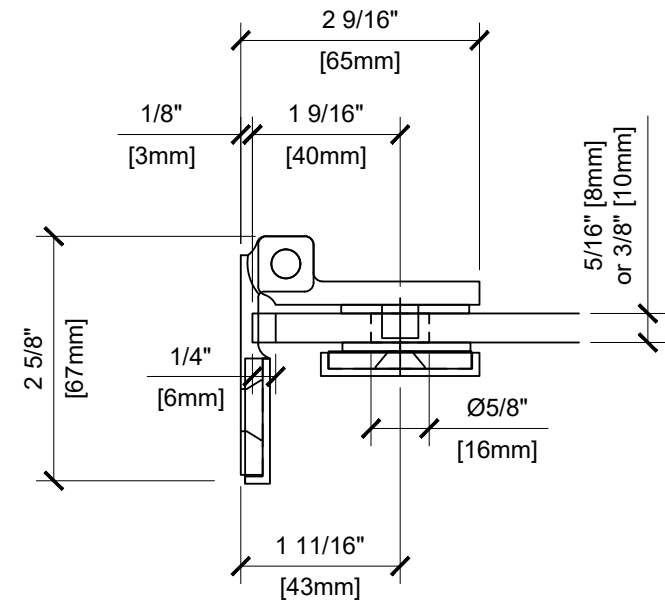
For public safety, we recommend the use of only tempered safety glass. Do not use power tools when installing these hinges.

Maintenance Guidelines:

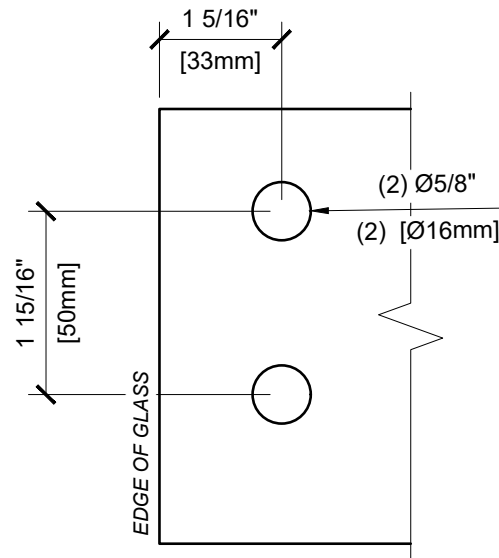
- Never use an abrasive cleaner on the hardware. Many of the components are coated with a clear lacquer that will be irreparably damaged if subjected to harsh, abrasive chemicals. Advise your customer that drying the hardware with a clean, soft towel on a daily basis is the best way to maintain the hardware. If mineral deposits build-up, mix a couple of drops of a mild liquid soap (such as Ivory or a similar product) into a cup of warm water. Using a soft, non-abrasive cloth, clean the hardware. Rinse thoroughly with clean, warm water and dry.



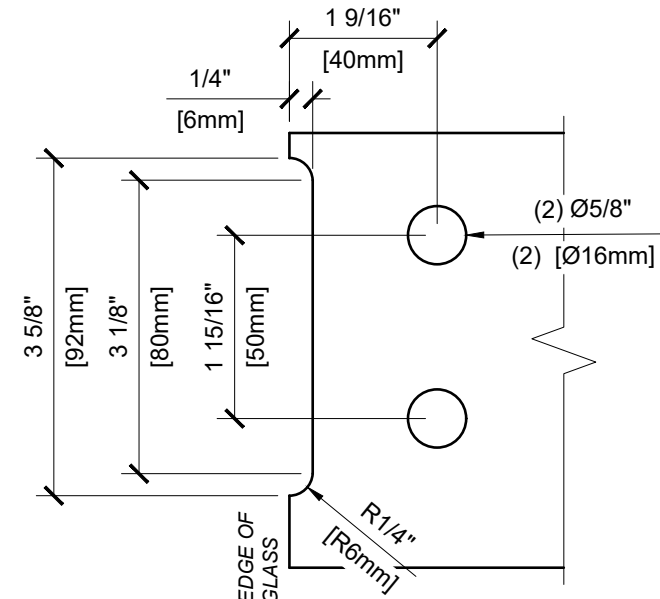
TYP. GLASS CUTOUT



TIGHT CLEARANCE GLASS CUTOUT



GLASS CUTOUT



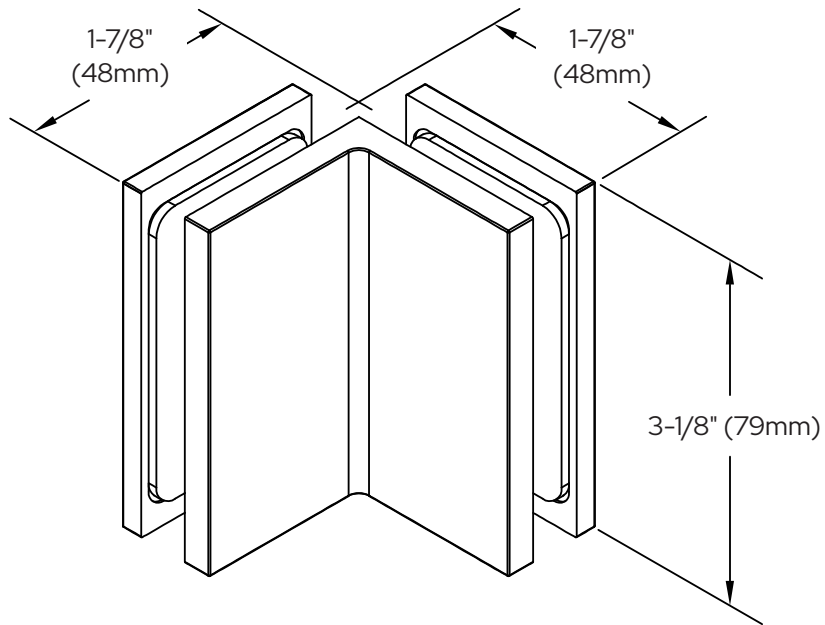
GLASS CUTOUT

COMO

Wall Mount Offset Backplate Hinge
CAT. NO. COM044



*** SEE TEMPLATE ON BACK ***
Refer to Dimensions Shown
to Ensure Accuracy



Specifications:

Material:	Solid brass
Glass Thickness Range:	5/16" (8mm) to 3/8" (10mm)
Hole Size Required:	5/8" (16mm)
Includes:	Mounting, screws and gaskets

COMO

90° Glass-to-Glass Bracket

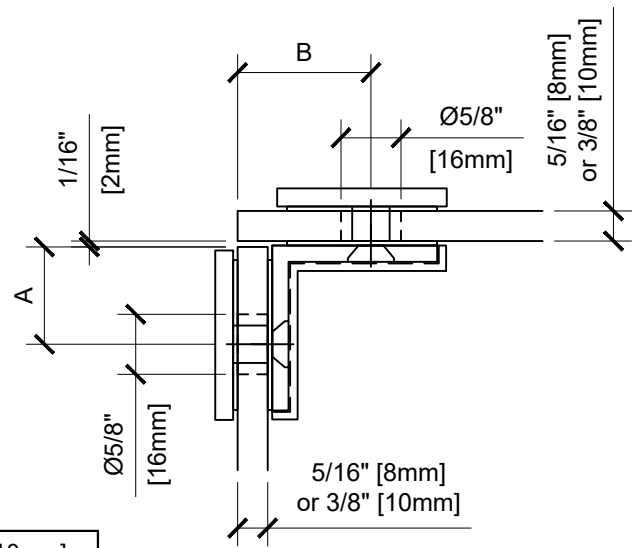
CAT. NO. COM090

For Technical Assistance in the United States and Canada 1.800.421.6144. Press 2, then option 1

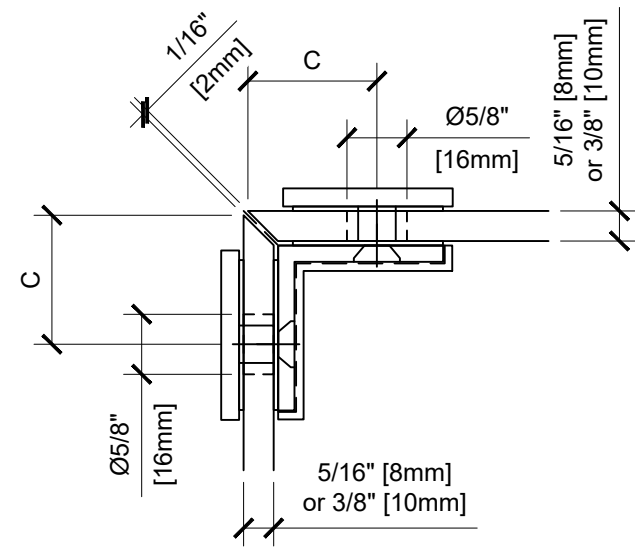
C.R. Laurence Co., Inc. • 2503 E. Vernon Ave., Los Angeles, CA 90058 • 1.800.421.6144 • crlaurence.com

4A-11

© Copyright 2022, C.R. Laurence Co., Inc_SDT22_22

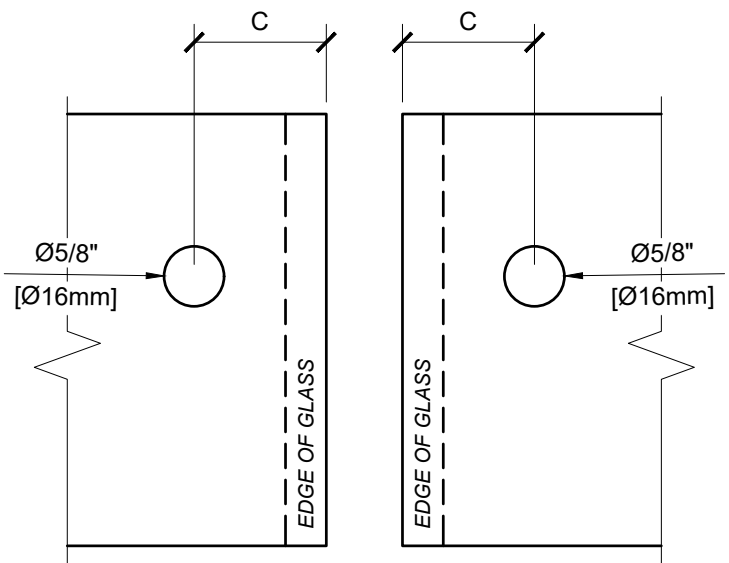
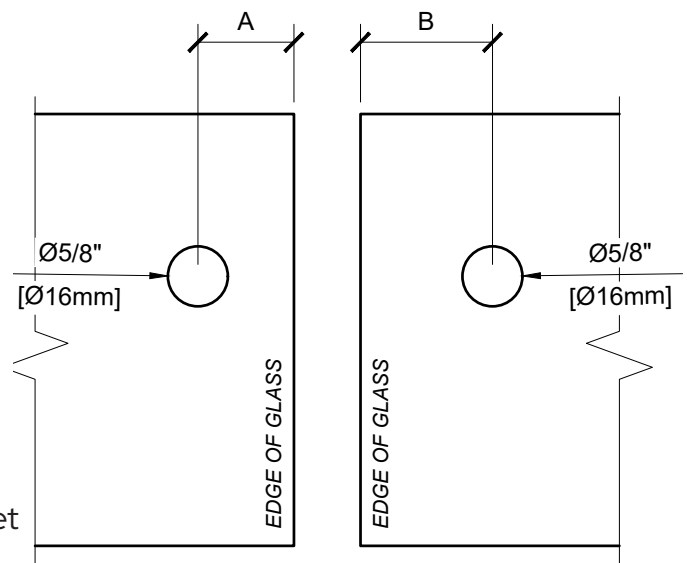


OVERLAP GLASS CUTOUT



MITER GLASS CUTOUT

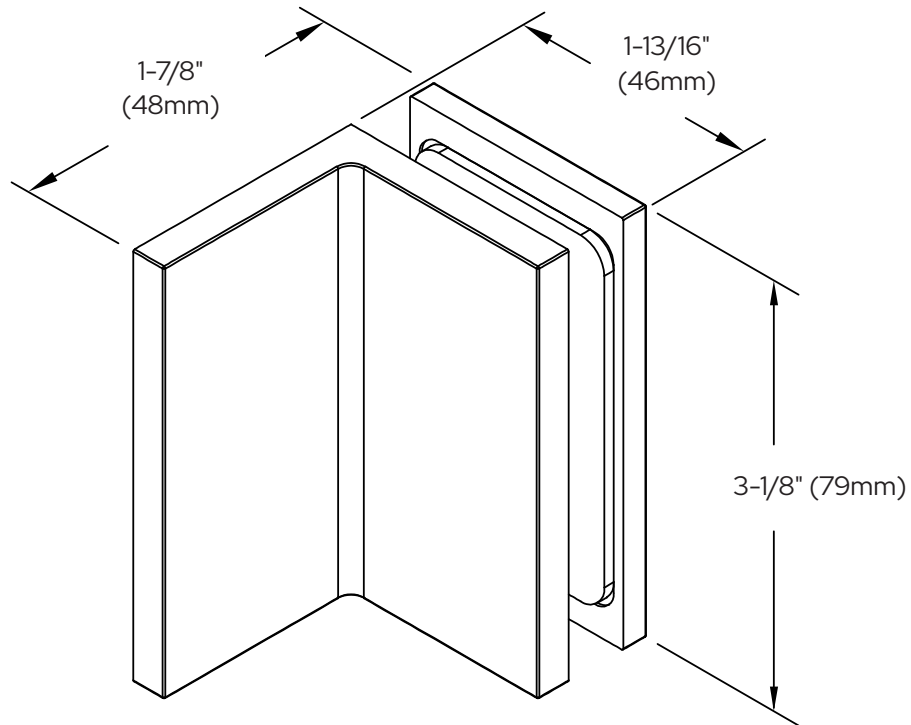
GLASS	5/16" [8mm]	3/8" [10mm]
A	1 1/16" [27mm]	1 1/16" [27mm]
B	1 7/16" [36mm]	1 1/2" [38mm]
C	1 3/8" [35mm]	1 7/16" [37mm]



COMO
90° Glass-to-Glass Bracket
CAT. NO. COM090



*** SEE TEMPLATE ON BACK ***
Refer to Dimensions Shown
to Ensure Accuracy



Specifications:

Material:	Solid brass
Glass Thickness Range:	5/16" (8mm) to 3/8" (10mm)
Hole Size Required:	5/8" (16mm)
Includes:	Mounting, screws and gaskets

COMO

Wall Mount Bracket

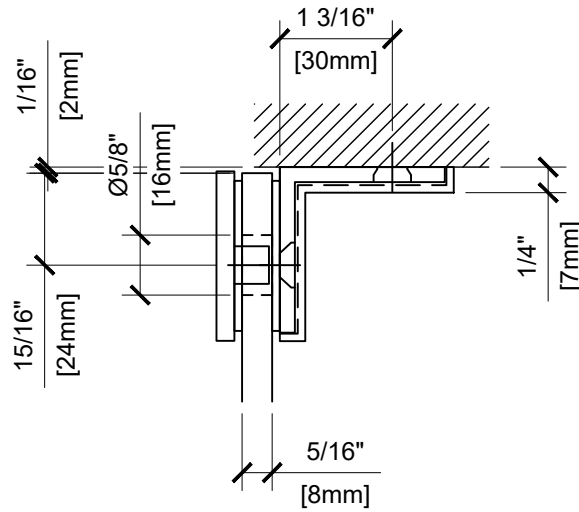
CAT. NO. COM90S

For Technical Assistance in the United States and Canada 1.800.421.6144. Press 2, then option 1

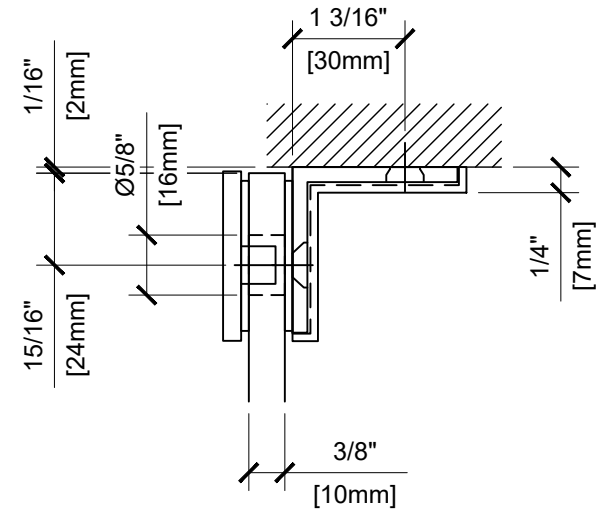
C.R. Laurence Co., Inc. • 2503 E. Vernon Ave., Los Angeles, CA 90058 • 1.800.421.6144 • crlaurence.com

4A-13

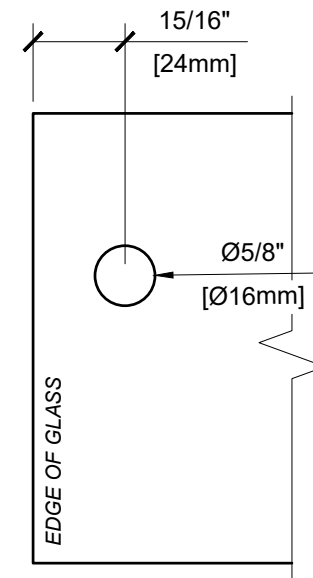
© Copyright 2022, C.R. Laurence Co., Inc_SDT22_22



WALL BRACKET (5/16" GLASS)



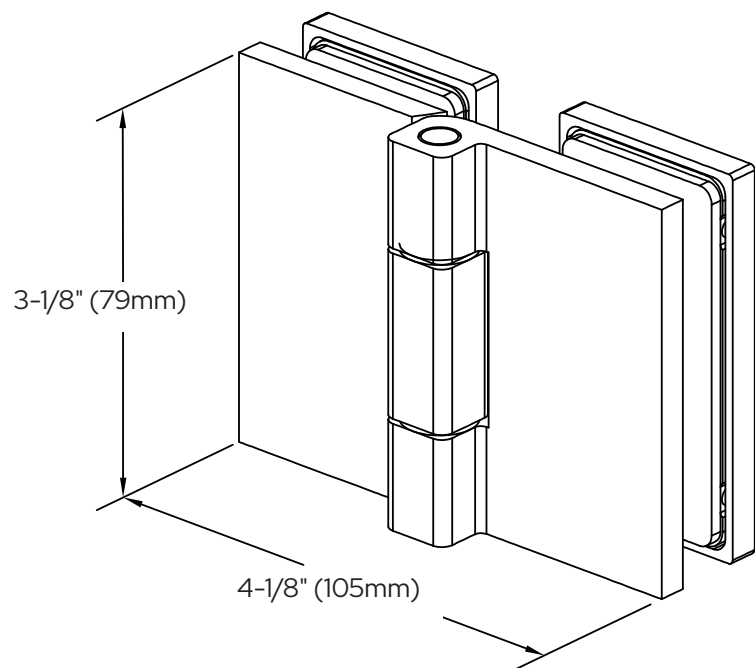
WALL BRACKET (3/8" GLASS)



GLASS CUTOUT

COMO
Wall Mount Bracket
CAT. NO. COM90S

*** SEE TEMPLATE ON BACK ***
Refer to Dimensions Shown
to Ensure Accuracy



COMO

Glass-to-Glass 180° Hinge

CAT. NO. COM180

***NOTE:** Do not exceed either maximum weight or width when choosing proper quantity of hinges.

Important Information:

1). This is a one-direction hinge and is designed for an outswing application only. A door strike is required so the door isn't allowed to swing inward and damage the door glass.

Specifications:

Glass Sizes:	5/16" (8mm) to 3/8" (10mm) thick tempered safety glass
Construction:	Solid brass
Cutout Required	
Includes:	Gaskets, screws and template

Maximum Door Capacities

Two Hinges

Maximum Door Weight:	110 lbs. (50 kg)
Maximum Door Width:	39" (1000mm)

Use of Gaskets:

For 5/16" (8mm) Glass: Use one thick gasket on each side

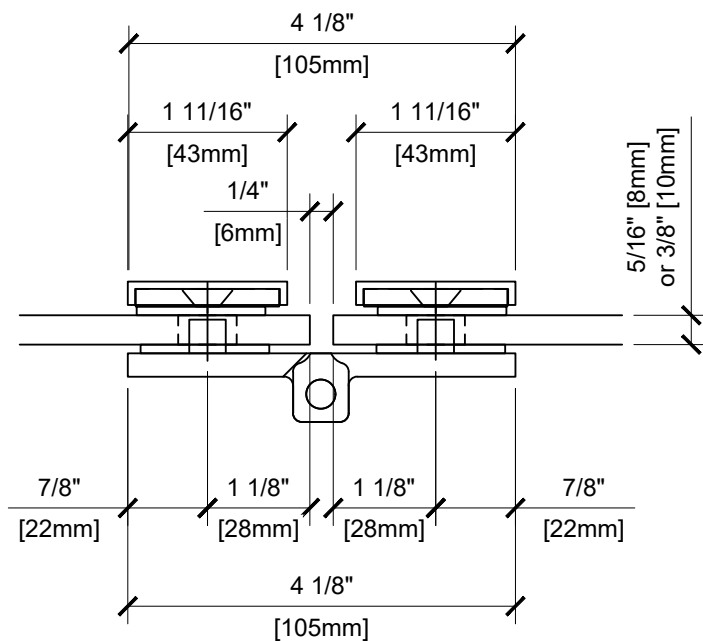
For 3/8" (10mm) Glass: Use one thin gasket on each side

Recommendations:

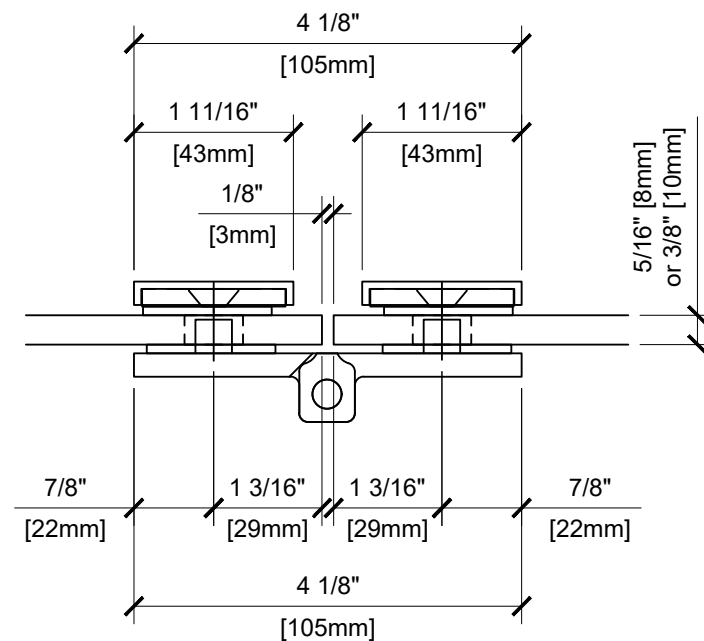
For public safety, we recommend the use of only tempered safety glass. Do not use power tools when installing these hinges.

Maintenance Guidelines:

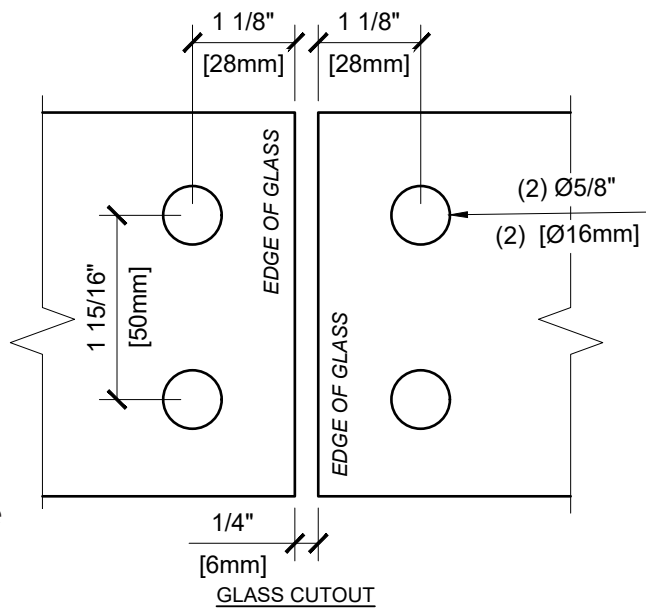
- Never use an abrasive cleaner on the hardware. Many of the components are coated with a clear lacquer that will be irreparably damaged if subjected to harsh, abrasive chemicals. Advise your customer that drying the hardware with a clean, soft towel on a daily basis is the best way to maintain the hardware. If mineral deposits build-up, mix a couple of drops of a mild liquid soap (such as Ivory or a similar product) into a cup of warm water. Using a soft, non-abrasive cloth, clean the hardware. Rinse thoroughly with clean, warm water and dry.



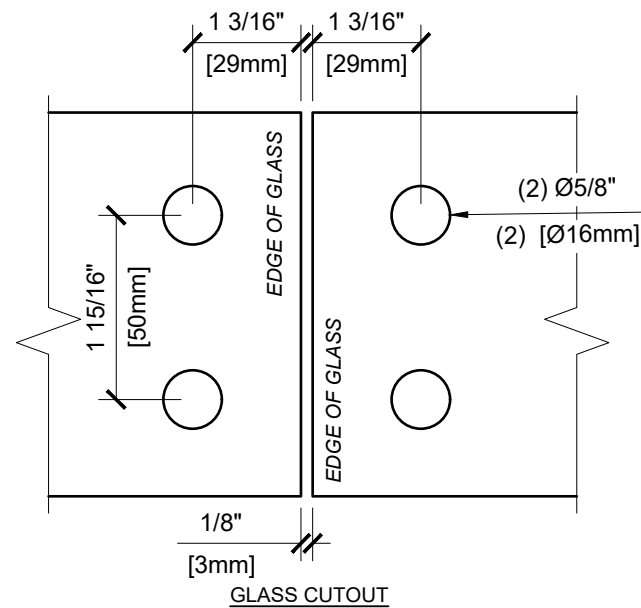
TYP. GLASS CUTOUT



TIGHT CLEARANCE GLASS CUTOUT



GLASS CUTOUT

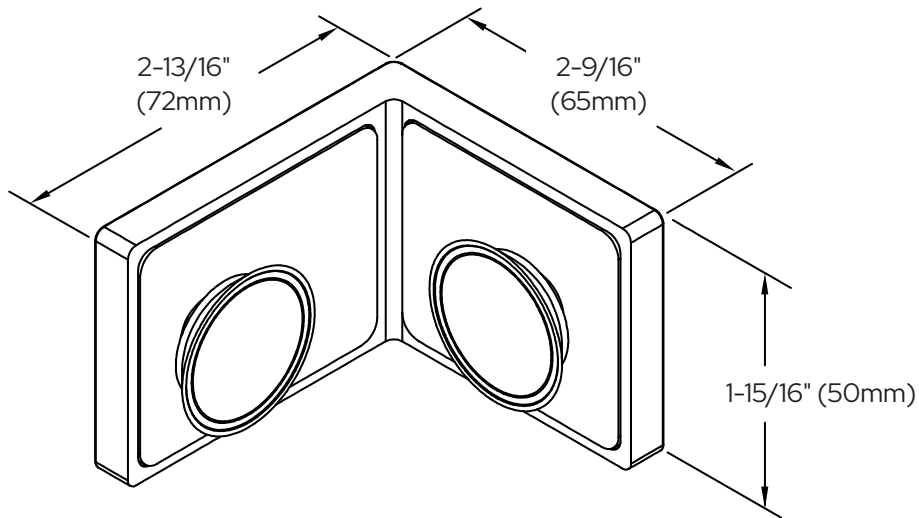


GLASS CUTOUT

COMO

Glass-to-Glass 180° Hinge
CAT. NO. COM180

*** SEE TEMPLATE ON BACK ***
Refer to Dimensions Shown
to Ensure Accuracy



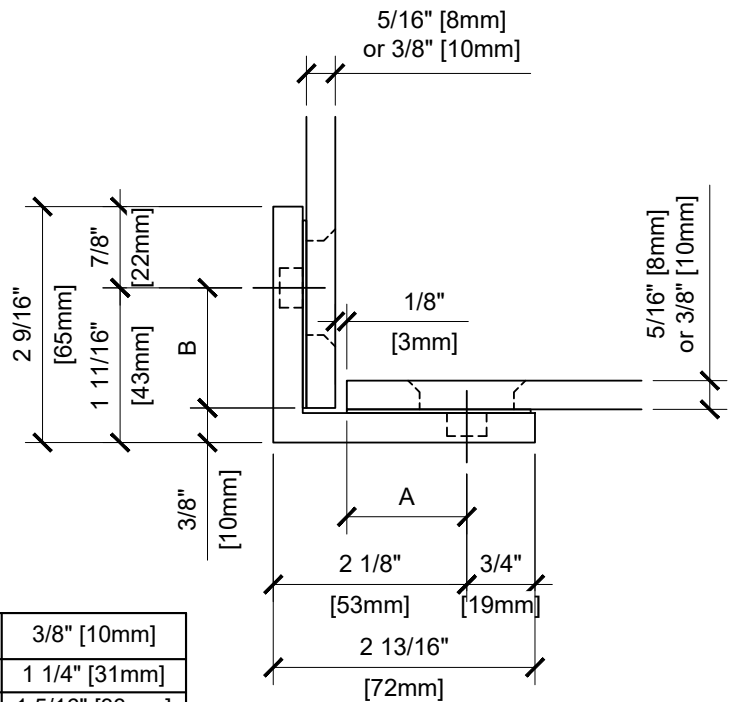
Specifications:

Material:	Solid brass
Glass Thickness Range:	5/16" (8mm) to 3/8" (10mm)
Hole Size Required:	Contersunk Holes
Includes:	Mounting, screws and gaskets

LUGANO

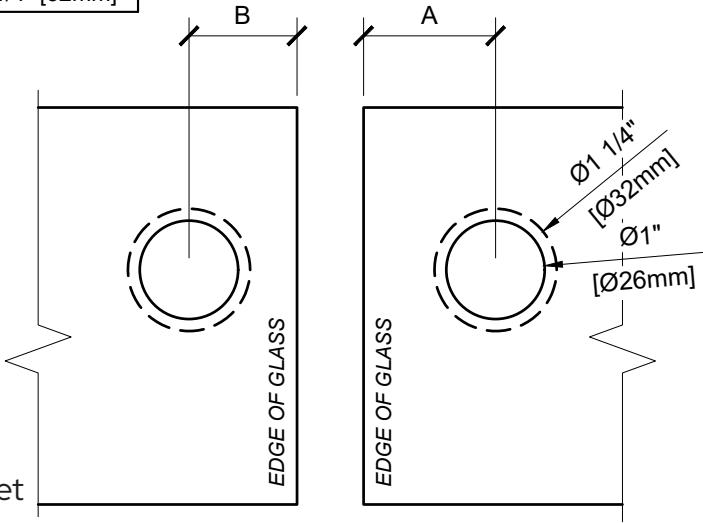
90° Glass-to-Glass Bracket

CAT. NO. LU090

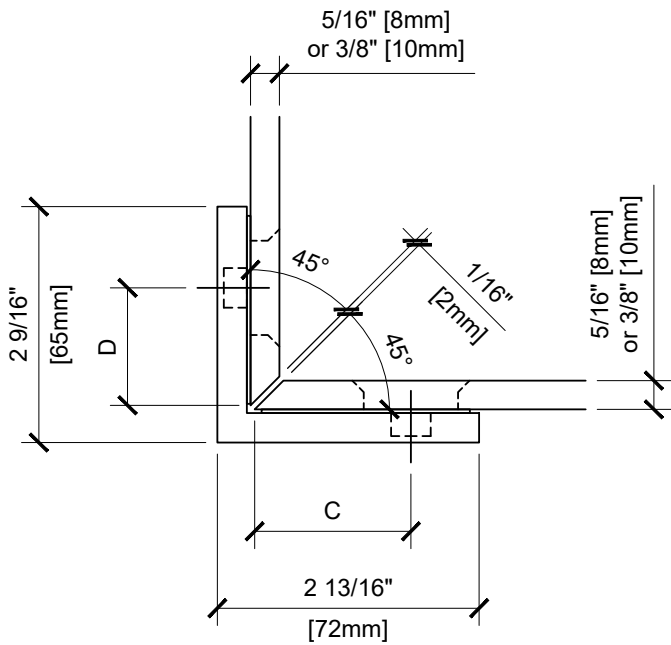


GLASS	5/16" [8mm]	3/8" [10mm]
A	1 5/16" [33mm]	1 1/4" [31mm]
B	1 5/16" [33mm]	1 5/16" [33mm]
C	1 11/16" [43mm]	1 11/16" [43mm]
D	1 1/4" [32mm]	1 1/4" [32mm]

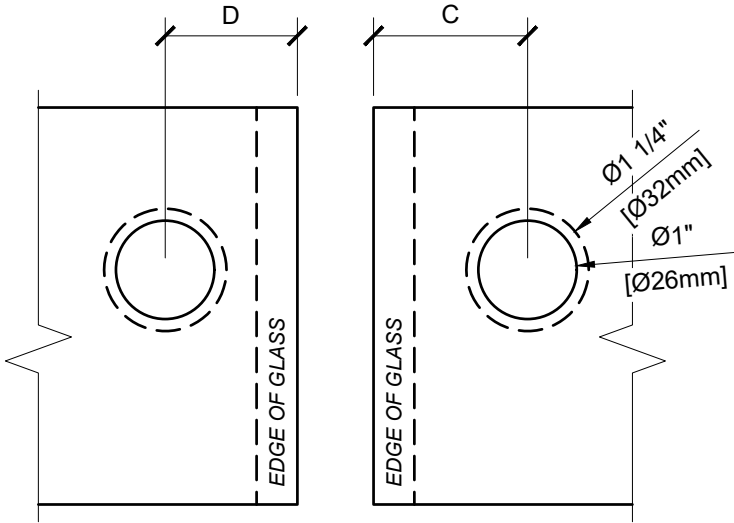
OVERLAP GLASS CUTOUT



GLASS CUTOUT



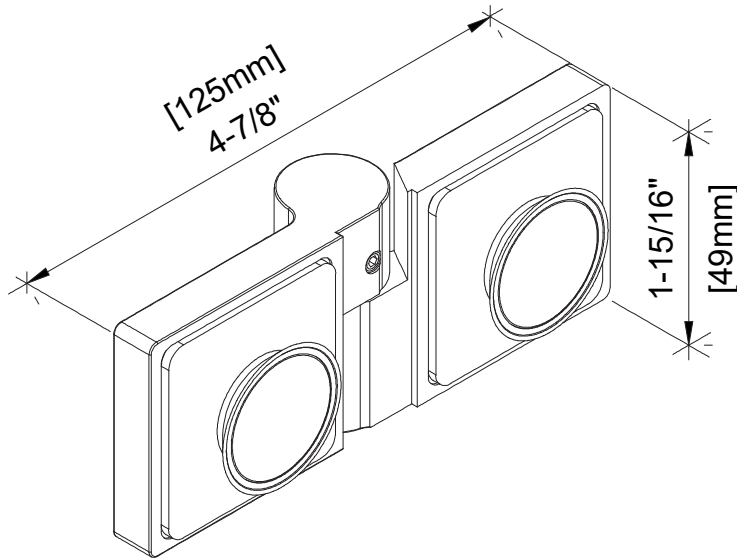
MITER GLASS CUTOUT



GLASS CUTOUT

LUGANO
90° Glass-to-Glass Bracket
CAT. NO. LU090

*** SEE TEMPLATE ON BACK ***
Refer to Dimensions Shown
to Ensure Accuracy



LUGANO

Glass-to-Glass 180° Hinge

CAT. NO. LUG180L/R

***NOTE:** Do not exceed either maximum weight or width when choosing proper quantity of hinges.

Important Information:

- 1). This is a one-direction hinge and is designed for an outswing application only. A door strike is required so the door isn't allowed to swing inward and damage the door glass.
- 2). This hinge comes equipped with a self-centering rise and fall action.

Specifications:

Glass Sizes:	5/16" (8mm) to 3/8" (10mm) thick tempered safety glass
Construction:	Solid brass
Closing Type:	Outswing only
Cutout Required:	Countersunk Holes
Includes:	Gaskets, screws and template

Maximum Door Capacities

Two Hinges

Maximum Door Weight:	99 lbs. (45 kg)
Maximum Door Width:	35" (889mm)

Use of Gaskets:

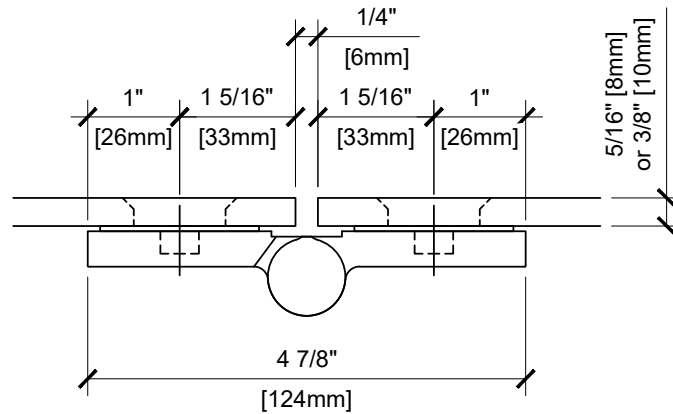
Gasket is integral part of Hinge, no matter the glass thickness.

Recommendations:

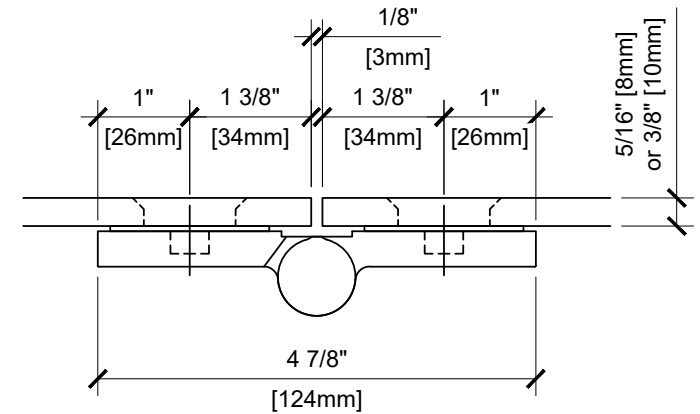
For public safety, we recommend the use of only tempered safety glass. Do not use power tools when installing these hinges.

Maintenance Guidelines:

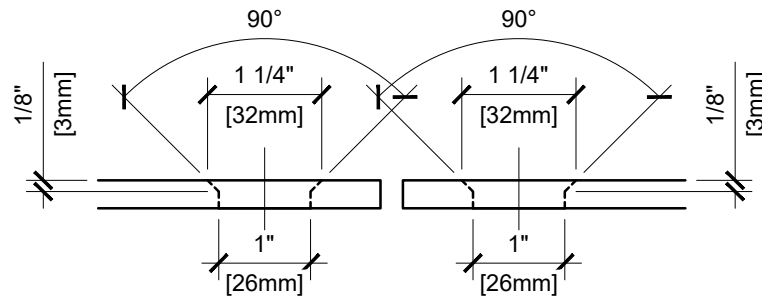
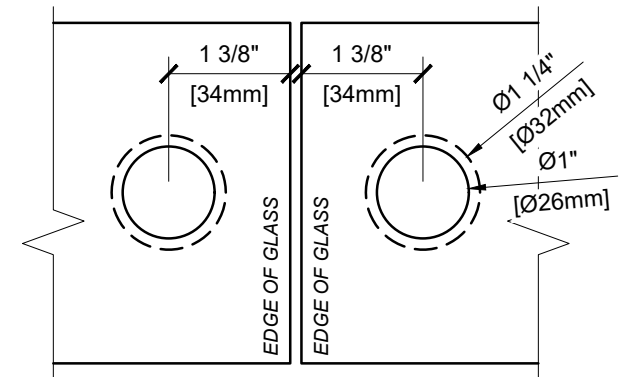
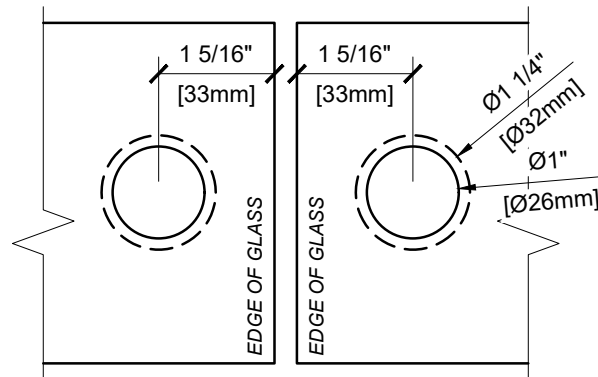
- Never use an abrasive cleaner on the hardware. Many of the components are coated with a clear lacquer that will be irreparably damaged if subjected to harsh, abrasive chemicals. Advise your customer that drying the hardware with a clean, soft towel on a daily basis is the best way to maintain the hardware. If mineral deposits build-up, mix a couple of drops of a mild liquid soap (such as Ivory or a similar product) into a cup of warm water. Using a soft, non-abrasive cloth, clean the hardware. Rinse thoroughly with clean, warm water and dry.



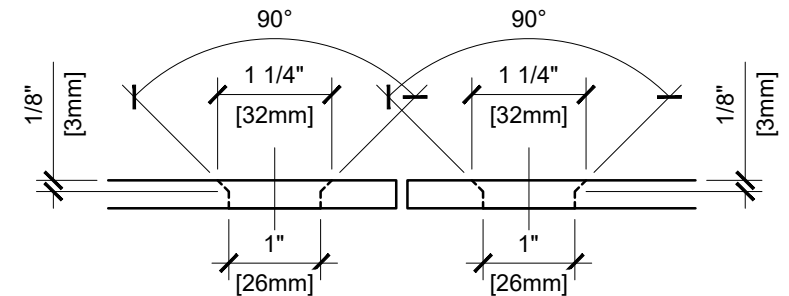
STANDARD GLASS CUTOUT



TIGHT CLEARANCE GLASS CUTOUT



GLASS CUTOUT



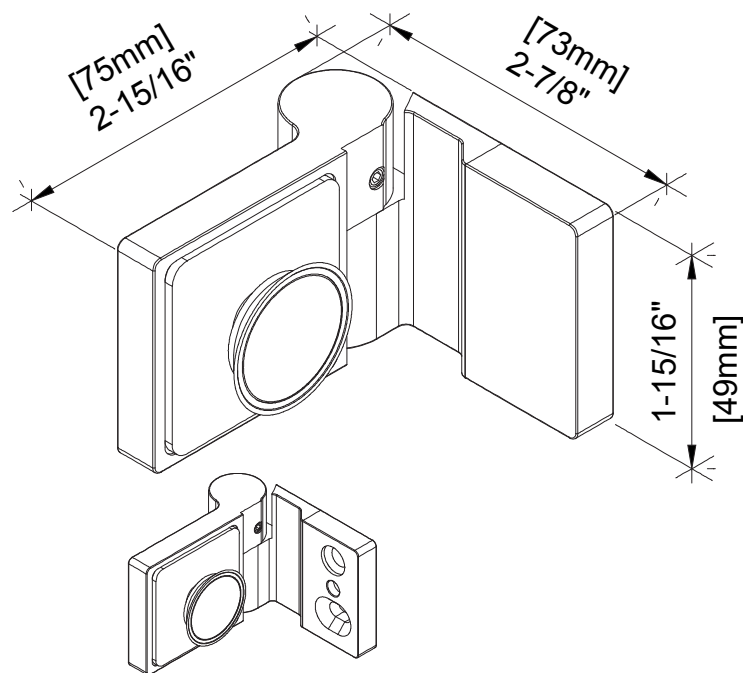
GLASS CUTOUT

LUGANO

Glass-to-Glass 180° Hinge

CAT. NO. LUG180L/R

*** SEE TEMPLATE ON BACK ***
Refer to Dimensions Shown
to Ensure Accuracy



LUGANO

Wall Mount Outswing Hinge

CAT. NO. LUG044L/R

***NOTE:** Do not exceed either maximum weight or width when choosing proper quantity of hinges.

Important Information:

- 1). This is a one-direction hinge and is designed for an outswing application only. A door strike is required so the door isn't allowed to swing inward and damage the door glass.
- 2). This hinge comes equipped with a self-centering rise and fall action.

Specifications:

Glass Sizes:	5/16" (8mm) to 3/8" (10mm) thick tempered safety glass
Construction:	Solid brass
Closing Type:	Self-centering when within 60° of closed position
Cutout Required	
Includes:	Gaskets, screws and template

Maximum Door Capacities

Two Hinges

Maximum Door Weight:	99 lbs. (45 kg)
Maximum Door Width:	35-7/16" (889mm)

Use of Gaskets:

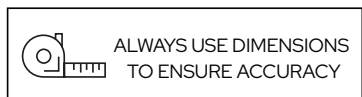
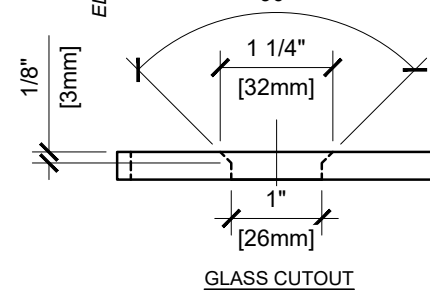
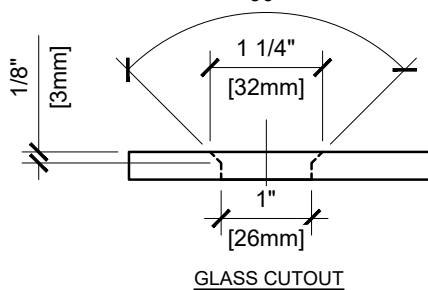
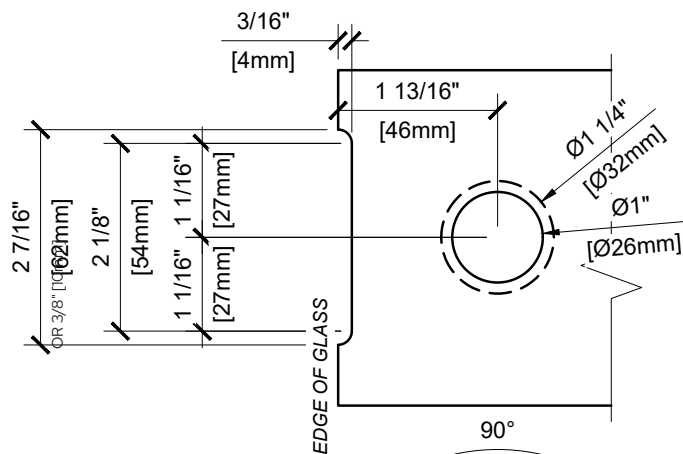
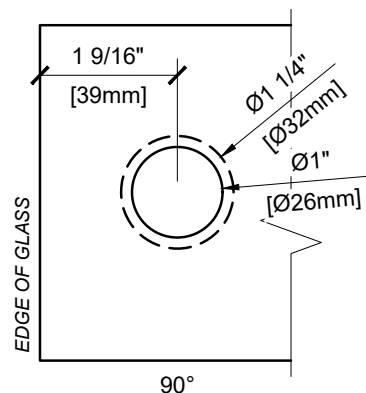
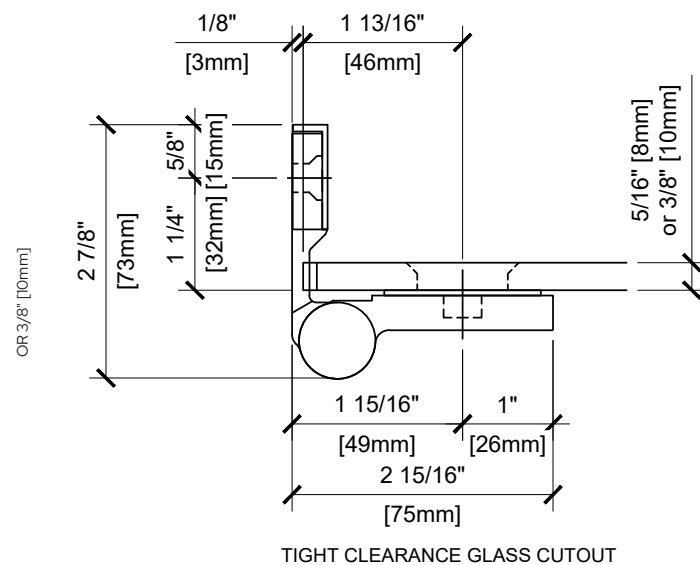
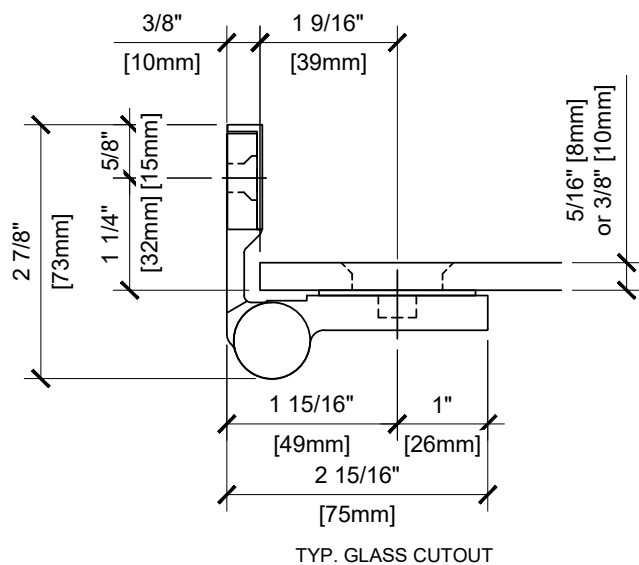
Gasket is intrgal part of Hinge, no matter the glass thickness.

Recommendations:

For public safety, we recommend the use of only tempered safety glass. Do not use power tools when installing these hinges.

Maintenance Guidelines:

- Never use an abrasive cleaner on the hardware. Many of the components are coated with a clear lacquer that will be irreparably damaged if subjected to harsh, abrasive chemicals. Advise your customer that drying the hardware with a clean, soft towel on a daily basis is the best way to maintain the hardware. If mineral deposits build-up, mix a couple of drops of a mild liquid soap (such as Ivory or a similar product) into a cup of warm water. Using a soft, non-abrasive cloth, clean the hardware. Rinse thoroughly with clean, warm water and dry.

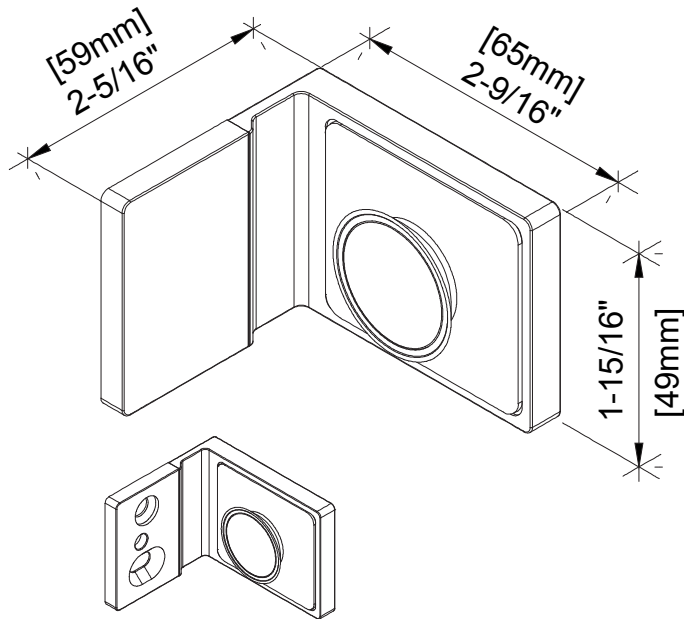


LUGANO

Wall Mount Outswing Hinge
CAT. NO. LUG044L/R



*** SEE TEMPLATE ON BACK ***
Refer to Dimensions Shown
to Ensure Accuracy



Specifications:

Material:

Glass Thickness Range:

Hole Size Required:

Includes:

Solid brass

5/16" (8mm) to 3/8" (10mm)

Countersunk hole

Mounting, screws and gaskets

LUGANO

Wall Mount Bracket

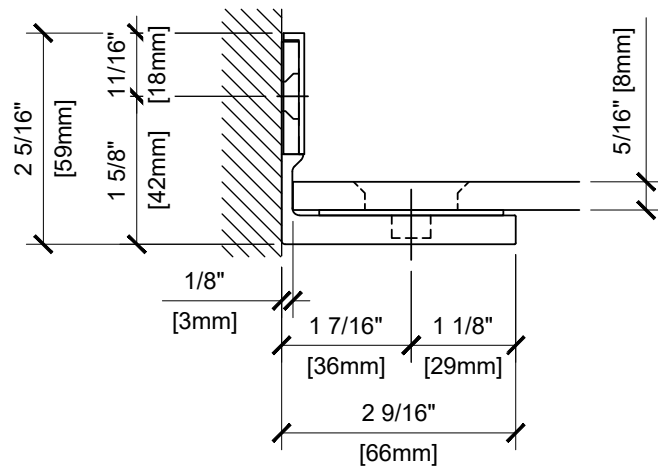
CAT. NO. LU90S

For Technical Assistance in the United States and Canada 1.800.421.6144. Press 2, then option 1

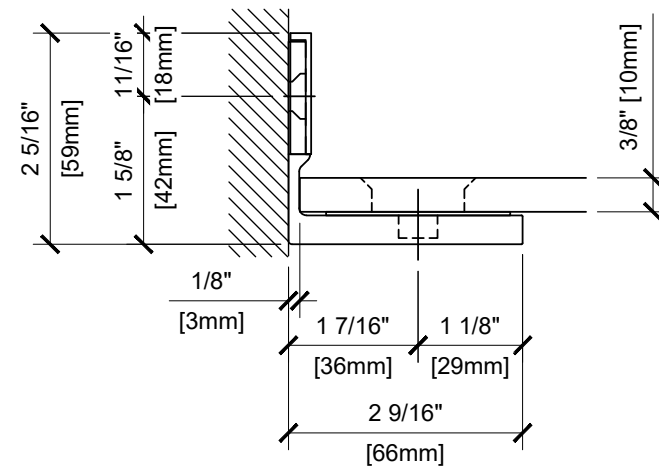
C.R. Laurence Co., Inc. • 2503 E. Vernon Ave., Los Angeles, CA 90058 • 1.800.421.6144 • crlaurence.com

4A-23

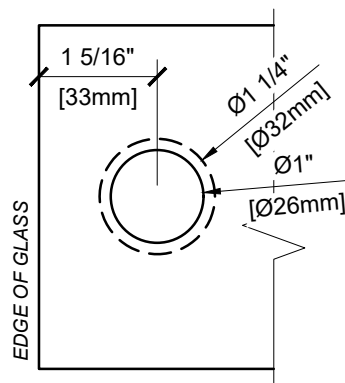
© Copyright 2022, C.R. Laurence Co., Inc_SDT22_22



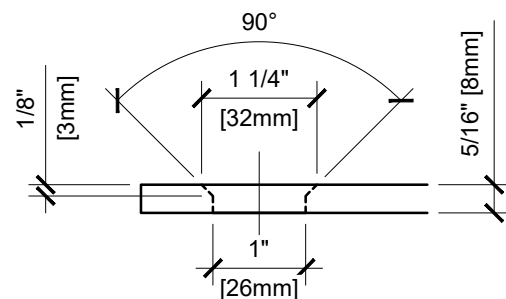
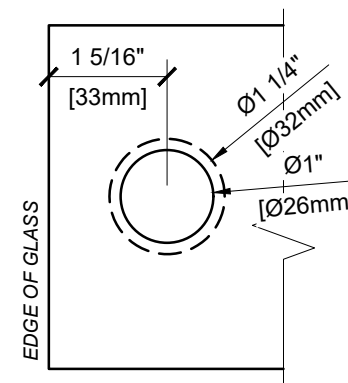
WALL BRACKET (5/16" GLASS)



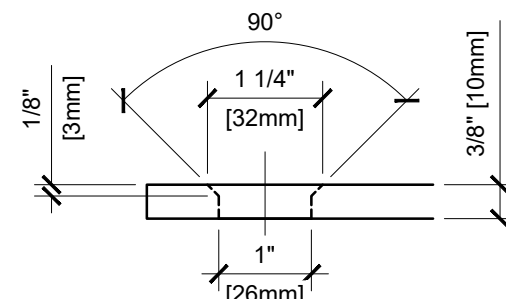
WALL BRACKET (3/8" GLASS)



OR 3/8" [10mm]



GLASS CUTOUT



GLASS CUTOUT

LUGANO

Wall Mount Bracket

CAT. NO. LU90S