



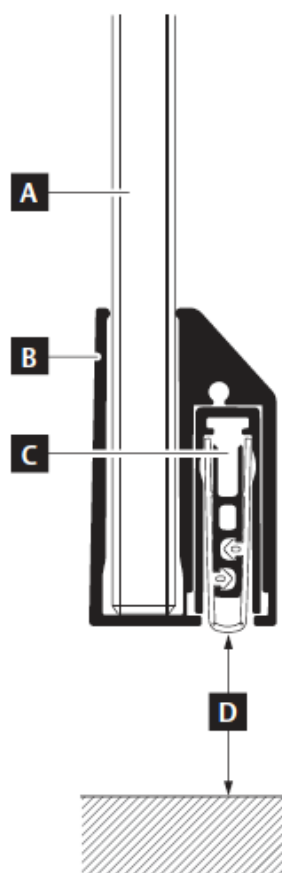
## INSTALLATION INSTRUCTIONS

---

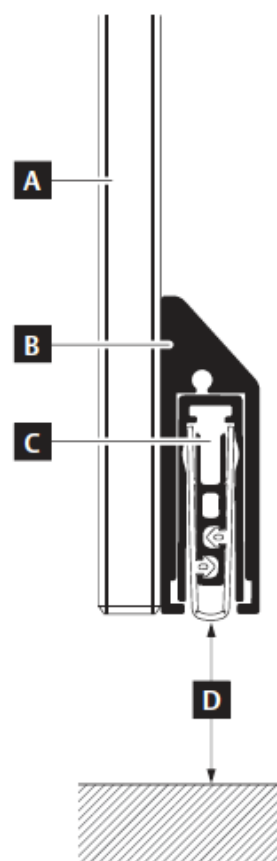
[crlaurence.com](http://crlaurence.com)

# FALLBROOK DROP SEAL





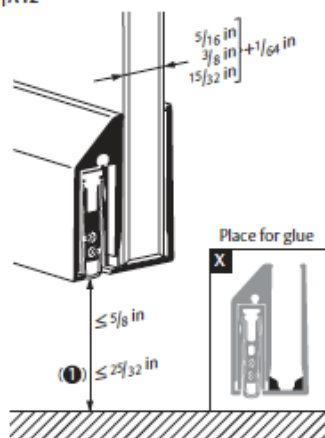
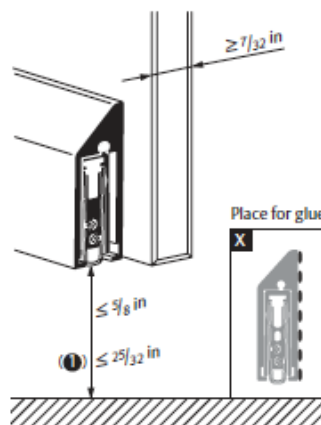
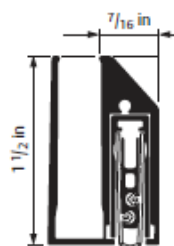
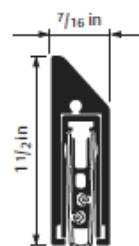
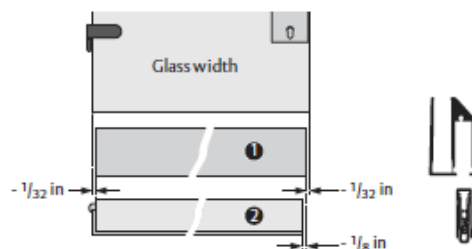
KG-A8 | A10 | A12  
narrow



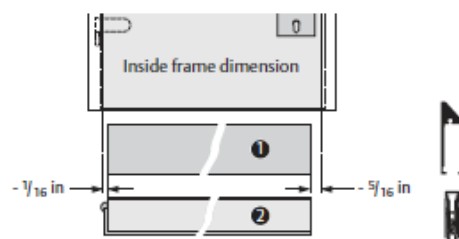
KG-SM-Set  
narrow



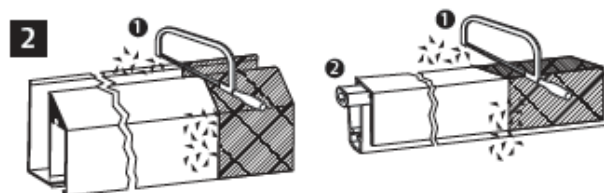
|          |                    |
|----------|--------------------|
| <b>A</b> | Glass              |
| <b>B</b> | Protecting profile |
| <b>C</b> | Drop-down seal     |
| <b>D</b> | Bottom door gap    |

KG-A8 | A10 | A12  
(narrow)KG-SM-Set  
(narrow)KG-A8 | A10 | A12  
(narrow)KG-SM-Set  
(narrow)**1** KG-A8 | A10 | A12  
(narrow)

**Preparation for shortening:** ① length of the protection profile = Glass width minus  $\frac{1}{16}$  in; ② length of the seal = length of the protection profile minus  $\frac{1}{8}$  in

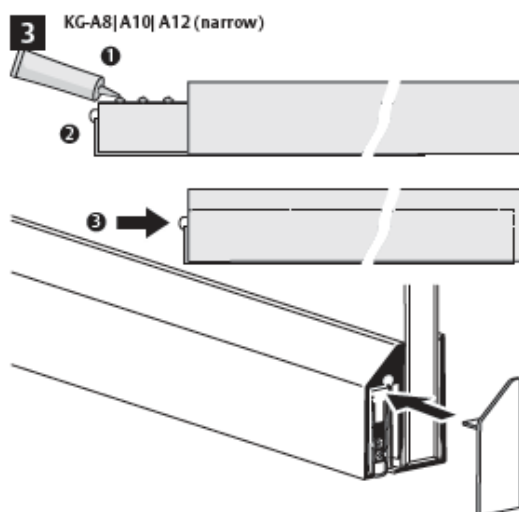
KG-SM-Set  
(narrow)

**Preparation for shortening:** ① length of the protection profile = inside frame dimension minus  $\frac{3}{8}$  in; ② length of the seal = length of the protection profile

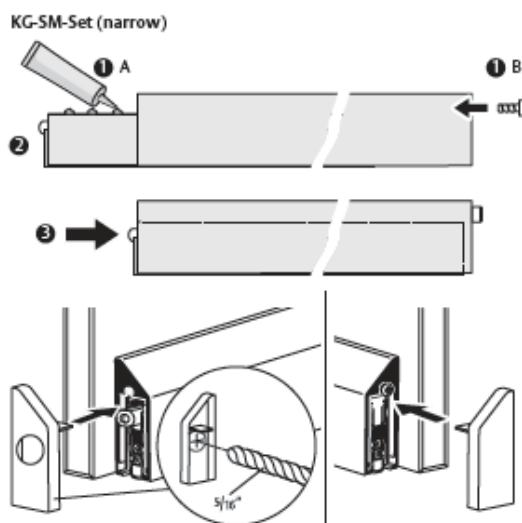


- 1: Shorten the seal / protection profile, remove shavings;  
2: Operational check

Minimum width of the door = 32 7/8"



The inner profile is removable and can be used for DIN L or DIN R.  
1: Superglue or similar; 2: 4-5 glue points on the back of the seal; 3: insert the seal until the protection profile has the same level



The inner profile is removable and can be used for DIN L or DIN R.  
1 A: Superglue or similar; B: with screw; 2: 4-5 glue points on the back of the seal; 3: insert the seal until the protection profile has the same level

**4**  
Fixing: Clean first the surface before you glue according to producer instructions. Place to apply glue on page 2 (X).

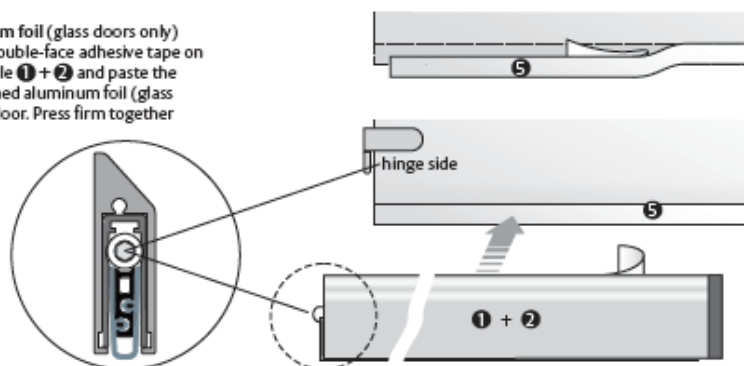
|   |  | KG-A8/A10/A12 | KG-SM-Set |
|---|--|---------------|-----------|
| 2 |  | ✓             | ✗         |
| 3 |  | ✗             | ✓         |

**5** KG-SM-Set (narrow)  
Paste on the aluminum foil (glass doors only)  
Apply the furnished aluminum foil 5 free of bubbles on the cleaned lower edge of the glass door.

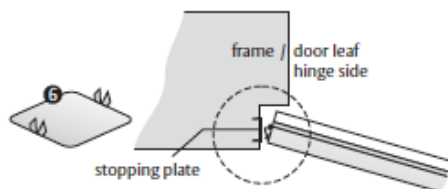


Apply the Planet seal on the aluminum foil (glass doors only)  
Remove now the covering foil of the double-face adhesive tape on the back the prepared protection profile 1 + 2 and paste the profile at the already applied and cleaned aluminum foil (glass doors only) or directly at the cleaned door. Press firm together the whole thing.

Pay attention to the control knob – it must be on the hinge side!

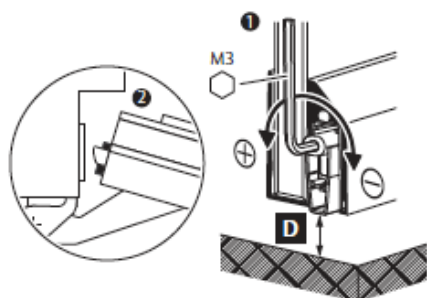


6



**Installation of the stopping plate** (protection of the wooden frame): Mount the stopping plate **6** in the mid of the pressure mark originated from the control knob on the door frame (in case of wooden frame only). The stopping plate is unnecessary in case of a steel frame.

7

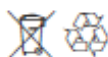


**Lift height adjustment** with allen key (M3), avoid pressing to the floor! (see seal height **D**), operational check

### Maintenance

Check every two years for function (release knob, sealing blade, lift height) and dirt, clean if necessary. Never grease the sealing lip.

### Recycling



Separate the seal according to material types (aluminum, steel, PA) and recycle. The silicon lip is residual waste. Follow the regulations in your country.