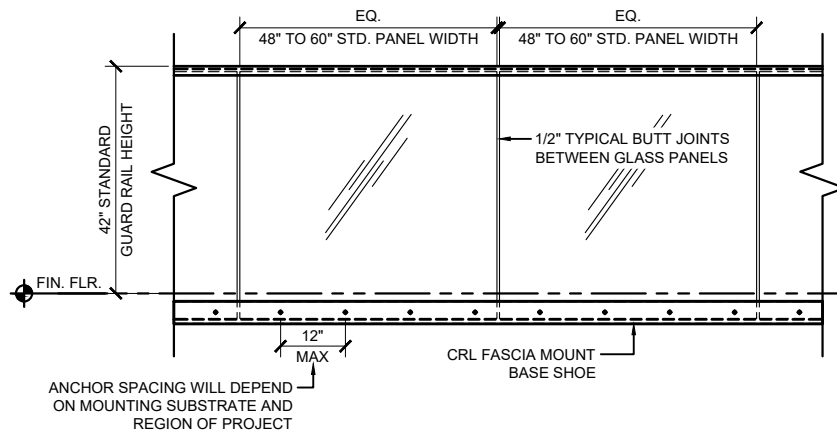
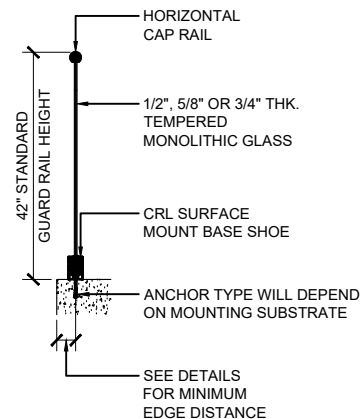
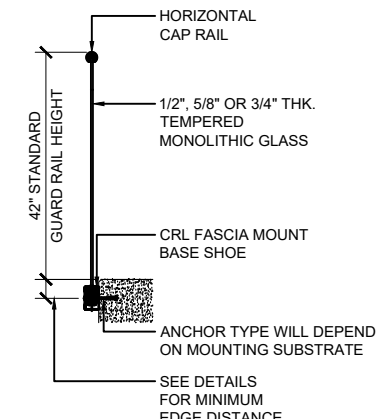


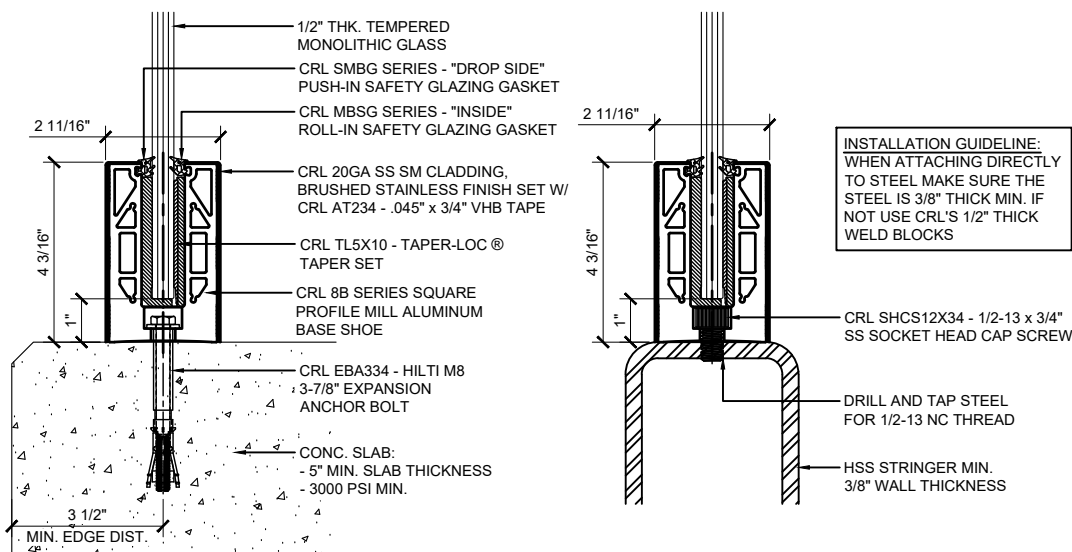
TYPICAL GRS GLASS RAILING ELEVATION VIEW - SURFACE MOUNT



TYPICAL GRS GLASS RAILING ELEVATION VIEW - FASCIA MOUNT

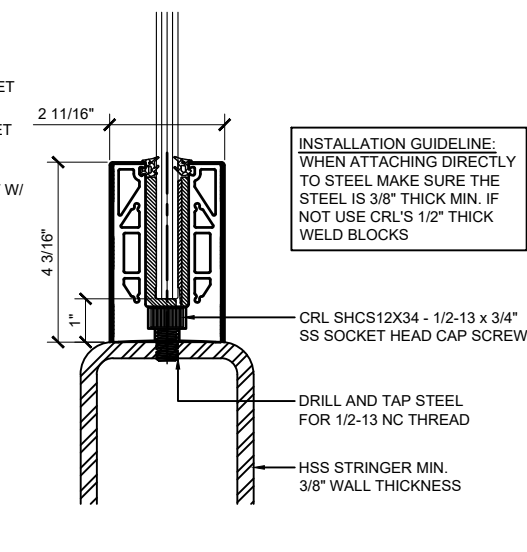


TYPICAL BASE SHOE ATTACHMENTS USING THE 8B SERIES BASE SHOE WITH TAPER-LOC ® SYSTEM



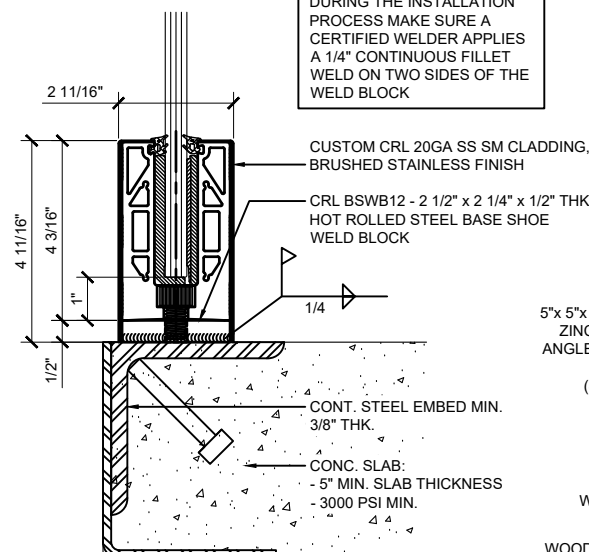
SURFACE MOUNT DETAIL  
CONCRETE SUBSTRATE

ANCHOR SPACING WILL DEPEND ON MOUNTING  
SUBSTRATE AND REGION OF PROJECT



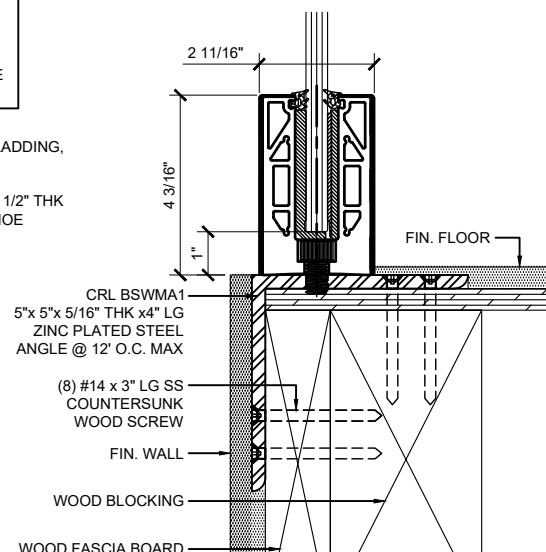
SURFACE MOUNT DETAIL  
STEEL SUBSTRATE

12" ON CENTER ANCHOR SPACING



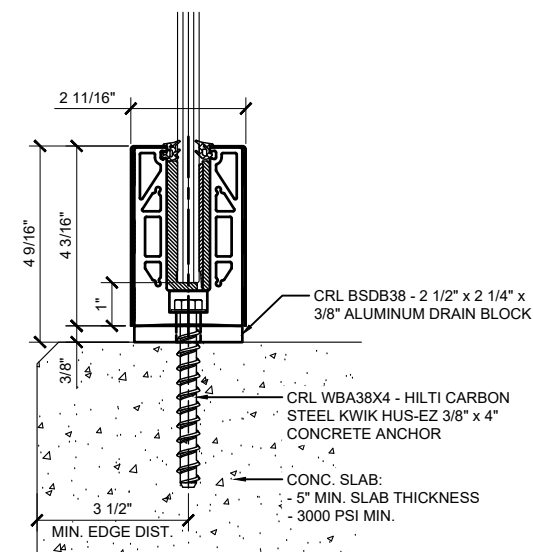
SURFACE MOUNT DETAIL  
STEEL SUBSTRATE W/ WELD BLOCK

12" ON CENTER ANCHOR SPACING



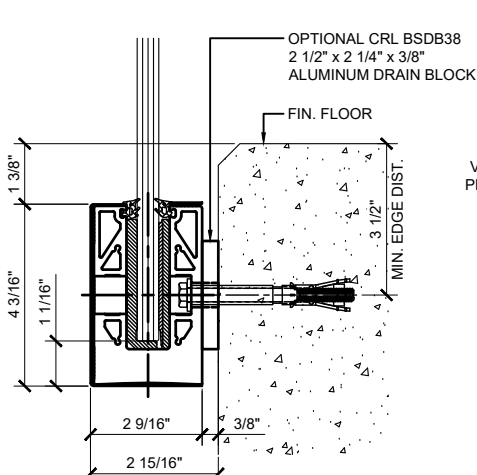
SURFACE MOUNT DETAIL  
WOOD SUBSTRATE

12" ON CENTER ANCHOR SPACING



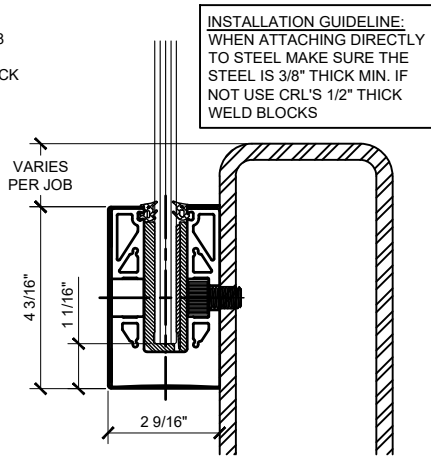
SURFACE MOUNT DETAIL  
CONCRETE SUBSTRATE W/ DRAIN BLOCK

ANCHOR SPACING WILL DEPEND ON MOUNTING  
SUBSTRATE AND REGION OF PROJECT



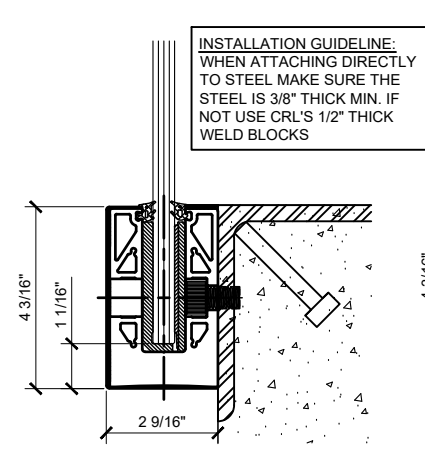
FASCIA MOUNT DETAIL  
CONCRETE SUBSTRATE

ANCHOR SPACING WILL DEPEND ON MOUNTING  
SUBSTRATE AND REGION OF PROJECT



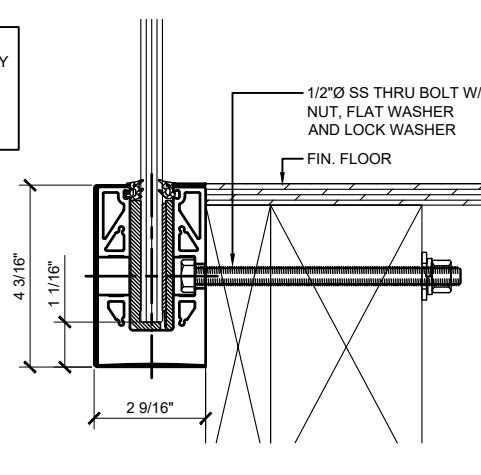
FASCIA MOUNT DETAIL  
STEEL SUBSTRATE

12" ON CENTER ANCHOR SPACING



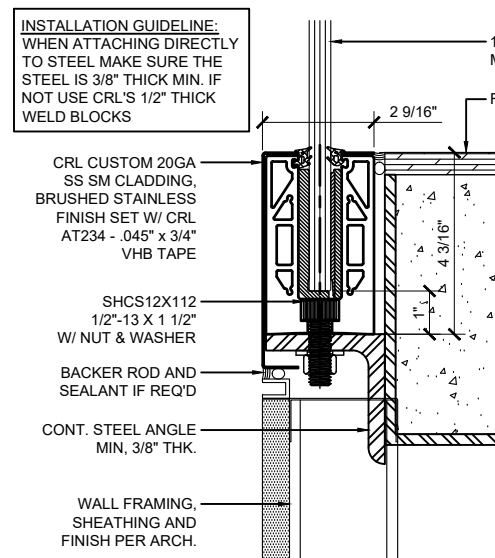
FASCIA MOUNT DETAIL  
STEEL SUBSTRATE

12" ON CENTER ANCHOR SPACING



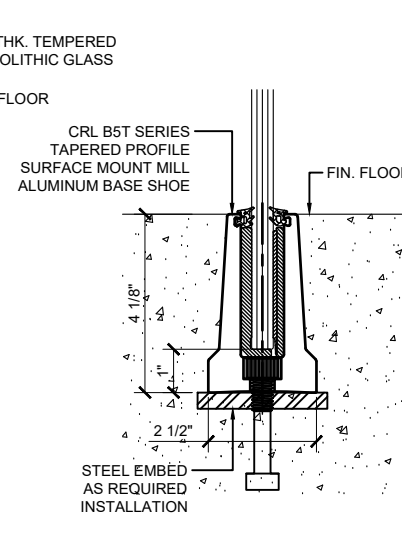
FASCIA MOUNT DETAIL  
WOOD SUBSTRATE

ANCHOR SPACING WILL DEPEND ON MOUNTING  
SUBSTRATE AND REGION OF PROJECT



SURFACE MOUNT DETAIL  
STEEL SUBSTRATE W/ CUSTOM CLADDING

12" ON CENTER ANCHOR SPACING



EMBED MOUNT  
CONCRETE SUBSTRATE

ANCHOR SPACING WILL DEPEND ON MOUNTING  
SUBSTRATE AND REGION OF PROJECT

| Revisions By: |          |    |
|---------------|----------|----|
| 3             | -        | -  |
| 4             | -        | -  |
| 5             | 06/05/18 | VM |
| 6             | 08/12/16 | JG |
| 7             | 02/08/16 | JG |

**CRL**  
ALUMINUM  
C.R. LAURENCE CO. ARCHITECTURAL PRODUCTS  
2503 E. Varian Avenue, Los Angeles, CA 90098-1897  
PH: (800) 421-6144 FX: (800) 887-7501 www.crlence.com

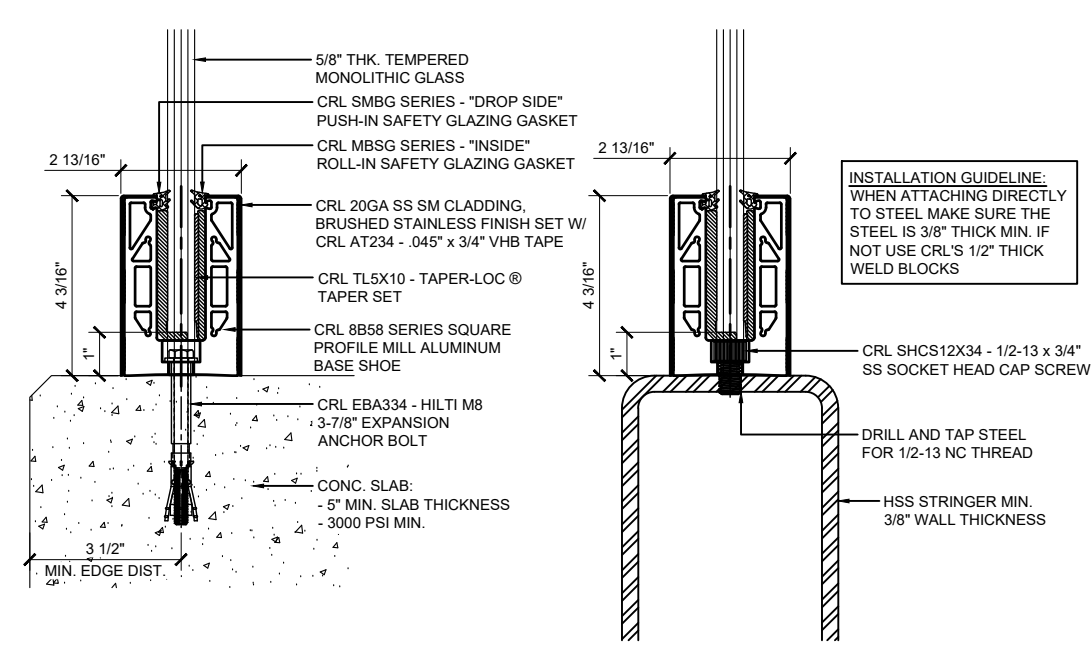
ICC ESR-3269  
ES

GRS  
GLASS RAILING SYSTEM  
FOR TEMPERED MONOLITHIC  
1/2", 5/8" & 3/4" THK. GLASS

ELEVATIONS AND DETAILS  
SURFACE MOUNT AND  
FASCIA MOUNT OPTIONS

Drawn By: JG  
Date: 12/15/2015  
Scale: AS NOTED  
File Name:  
CRL GRS Monolithic Glass Railing System.dwg  
Sheet

TYPICAL BASE SHOE ATTACHMENTS USING THE 8B58 SERIES BASE SHOE WITH TAPER-LOC ® SYSTEM

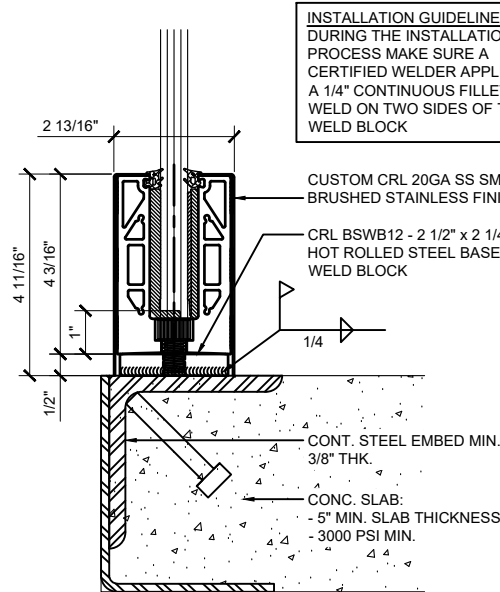


SURFACE MOUNT DETAIL  
CONCRETE SUBSTRATE

ANCHOR SPACING WILL DEPEND ON MOUNTING SUBSTRATE AND REGION OF PROJECT

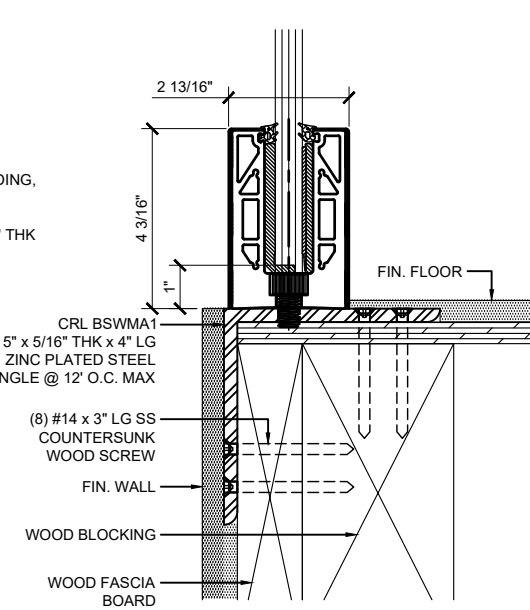
SURFACE MOUNT DETAIL  
STEEL SUBSTRATE

12" ON CENTER ANCHOR SPACING



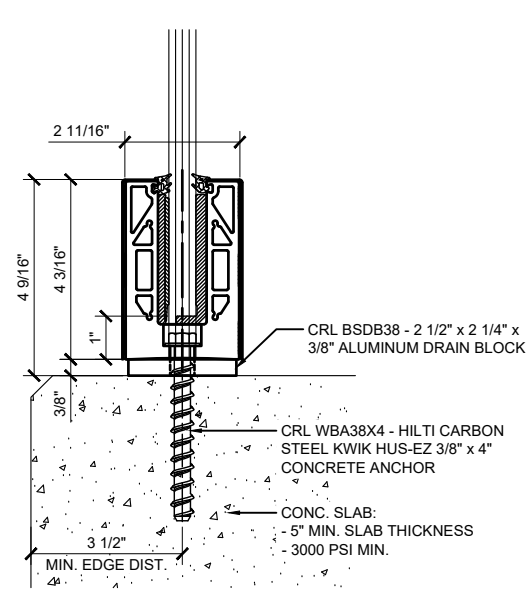
SURFACE MOUNT DETAIL  
STEEL SUBSTRATE W/ WELD BLOCK

12" ON CENTER ANCHOR SPACING



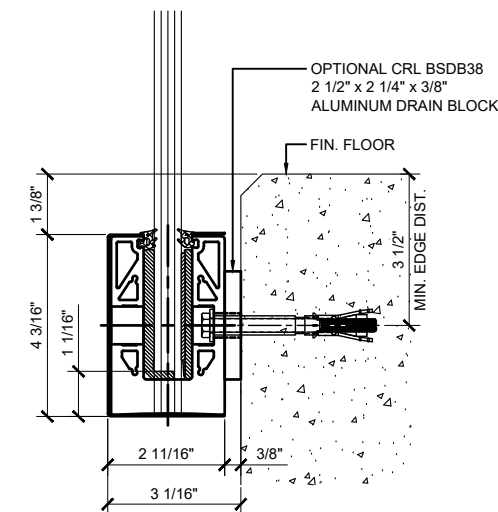
SURFACE MOUNT DETAIL  
WOOD SUBSTRATE

12" ON CENTER ANCHOR SPACING



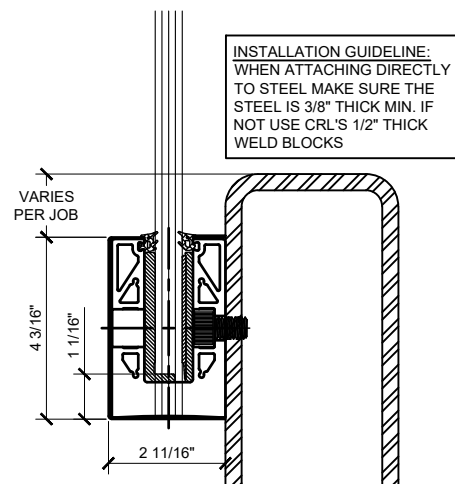
SURFACE MOUNT DETAIL  
CONCRETE SUBSTRATE W/ DRAIN BLOCK

ANCHOR SPACING WILL DEPEND ON MOUNTING SUBSTRATE AND REGION OF PROJECT



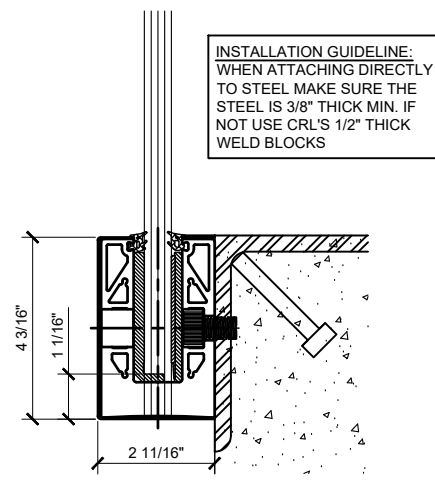
FASCIA MOUNT DETAIL  
CONCRETE SUBSTRATE

ANCHOR SPACING WILL DEPEND ON MOUNTING SUBSTRATE AND REGION OF PROJECT



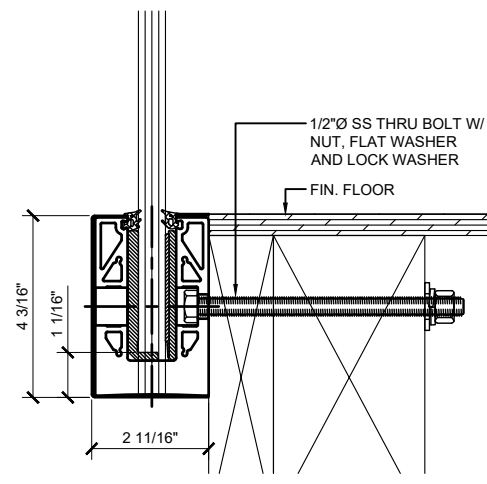
FASCIA MOUNT DETAIL  
STEEL SUBSTRATE

12" ON CENTER ANCHOR SPACING



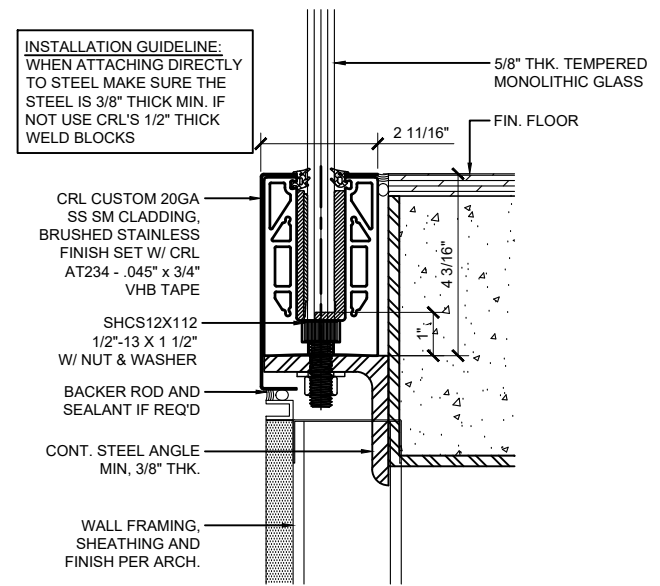
FASCIA MOUNT DETAIL  
STEEL SUBSTRATE

12" ON CENTER ANCHOR SPACING



FASCIA MOUNT DETAIL  
WOOD SUBSTRATE

ANCHOR SPACING WILL DEPEND ON MOUNTING SUBSTRATE AND REGION OF PROJECT



SURFACE MOUNT DETAIL  
STEEL SUBSTRATE W/ CUSTOM CLADDING

12" ON CENTER ANCHOR SPACING

| Revisions By: |          |    |
|---------------|----------|----|
| 5             | -        | -  |
| 4             | -        | -  |
| 3             | 06/05/18 | VM |
| 2             | 08/12/16 | JG |
| 1             | 02/08/16 | JG |

**CRL**  
ALUMINUM

C.R. LAURENCE CO. ARCHITECTURAL PRODUCTS  
2503 E. Vernon Avenue, Los Angeles, CA 90058-1897  
PH: (800) 421-6144 FX: (800) 587-7501 www.crlaurence.com

ICC ESR-3269

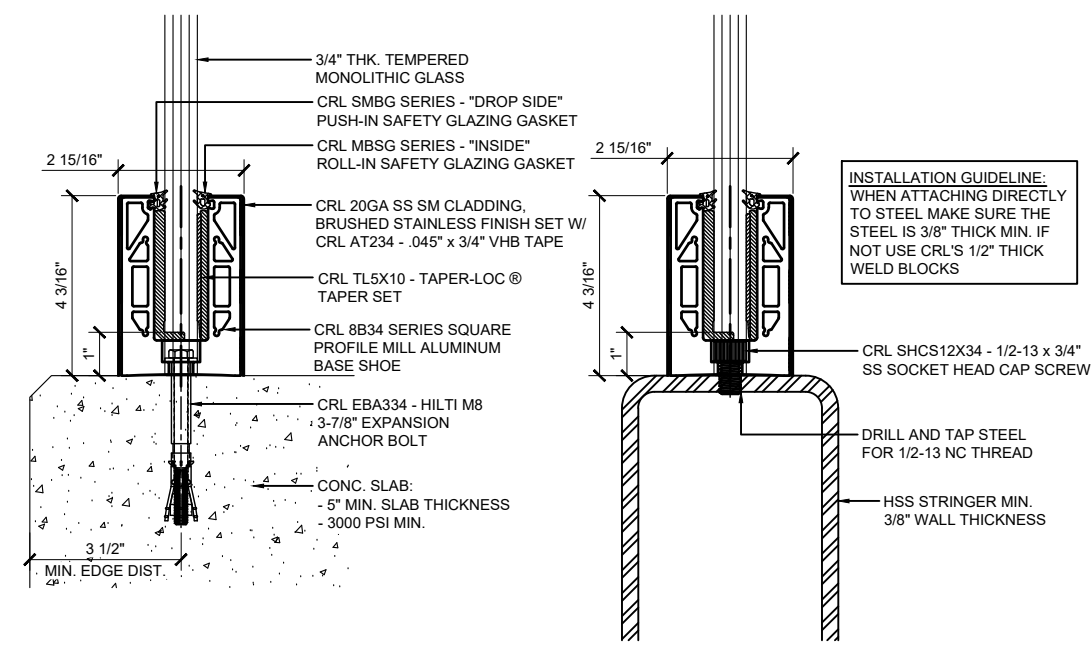
ICC ESR

GRS  
GLASS RAILING SYSTEM  
FOR TEMPERED MONOLITHIC  
1/2", 5/8" & 3/4" THK. GLASS

ELEVATIONS AND DETAILS  
SURFACE MOUNT AND  
FASCIA MOUNT OPTIONS

Drawn By: JG  
Date: 12/15/2015  
Scale: AS NOTED  
File Name:  
CRL GRS Monolithic Glass Railing System.dwg  
Sheet

TYPICAL BASE SHOE ATTACHMENTS USING THE 8B34 SERIES BASE SHOE WITH TAPER-LOC ® SYSTEM

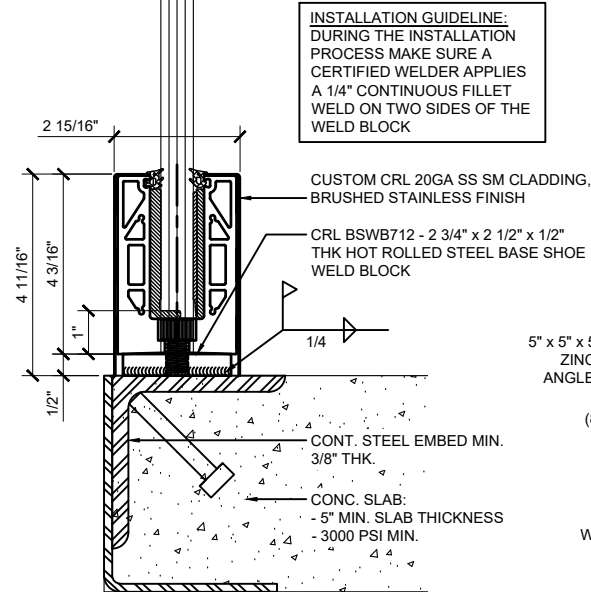


SURFACE MOUNT DETAIL  
CONCRETE SUBSTRATE

ANCHOR SPACING WILL DEPEND ON MOUNTING SUBSTRATE AND REGION OF PROJECT

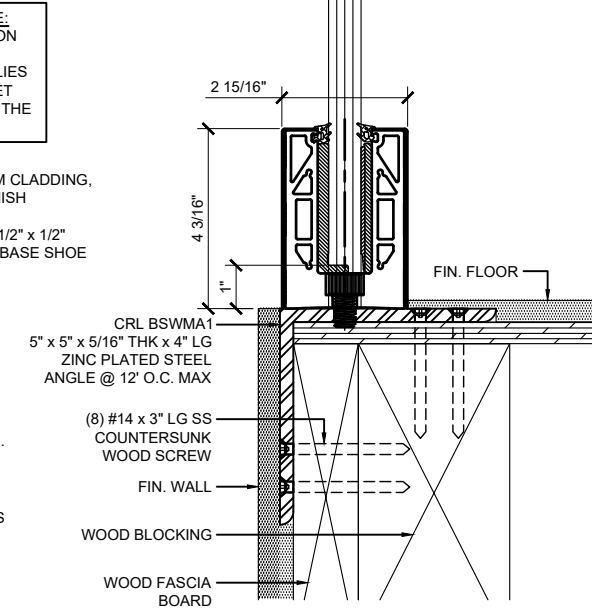
SURFACE MOUNT DETAIL  
STEEL SUBSTRATE

12" ON CENTER ANCHOR SPACING



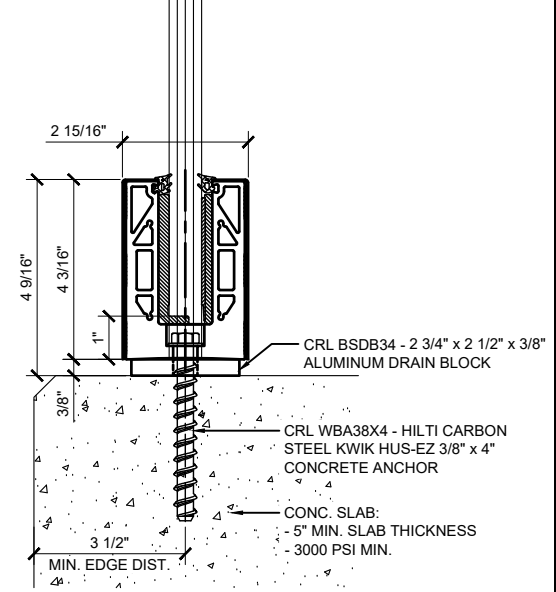
SURFACE MOUNT DETAIL  
STEEL SUBSTRATE W/ WELD BLOCK

12" ON CENTER ANCHOR SPACING



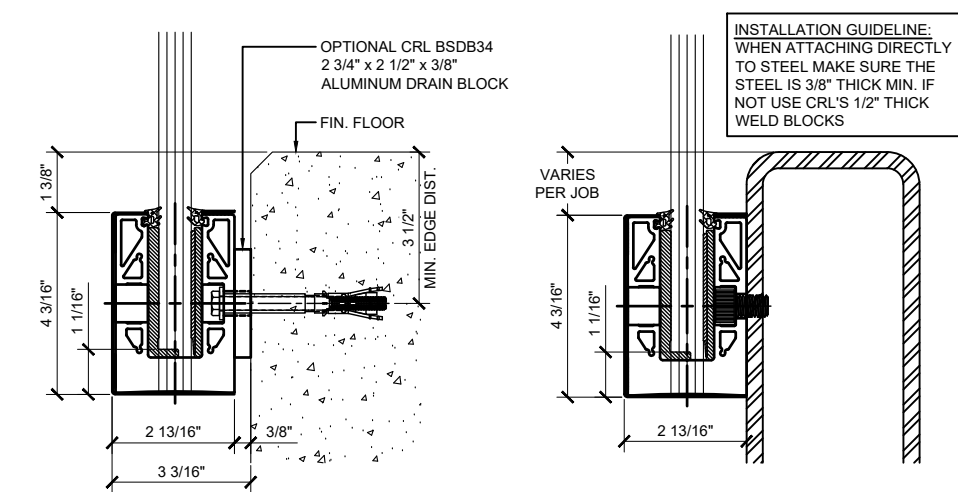
SURFACE MOUNT DETAIL  
WOOD SUBSTRATE

12" ON CENTER ANCHOR SPACING



SURFACE MOUNT DETAIL  
CONCRETE SUBSTRATE W/ DRAIN BLOCK

ANCHOR SPACING WILL DEPEND ON MOUNTING SUBSTRATE AND REGION OF PROJECT

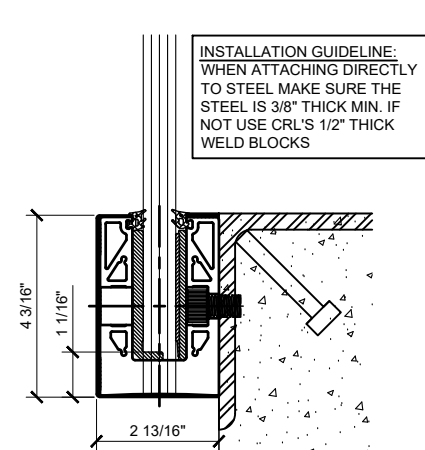


FASCIA MOUNT DETAIL  
CONCRETE SUBSTRATE

ANCHOR SPACING WILL DEPEND ON MOUNTING SUBSTRATE AND REGION OF PROJECT

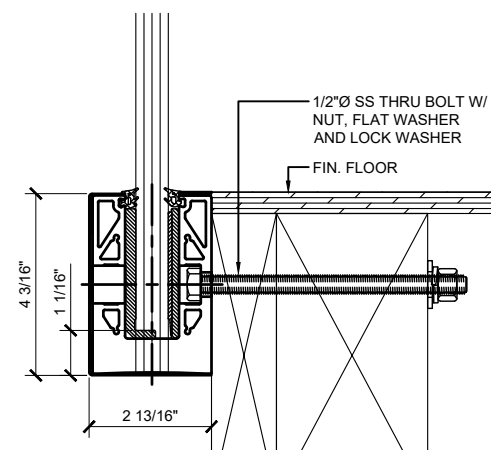
FASCIA MOUNT DETAIL  
STEEL SUBSTRATE

12" ON CENTER ANCHOR SPACING



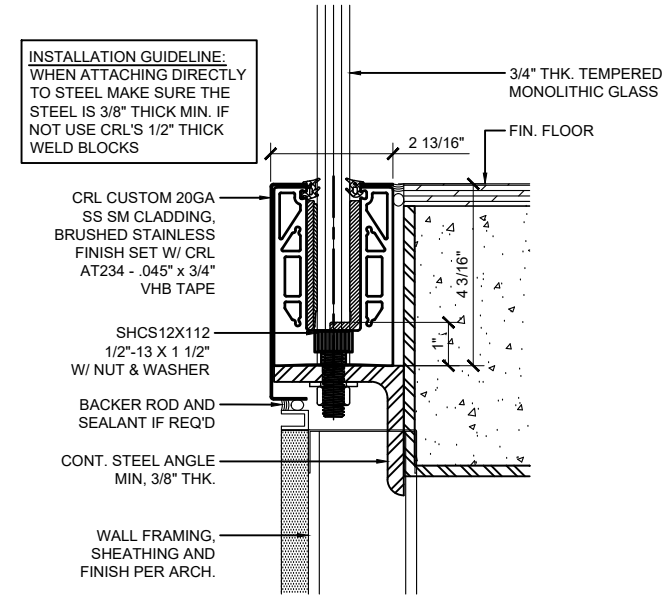
FASCIA MOUNT DETAIL  
STEEL SUBSTRATE

12" ON CENTER ANCHOR SPACING



FASCIA MOUNT DETAIL  
WOOD SUBSTRATE

ANCHOR SPACING WILL DEPEND ON MOUNTING SUBSTRATE AND REGION OF PROJECT



SURFACE MOUNT DETAIL  
STEEL SUBSTRATE W/ CUSTOM CLADDING

12" ON CENTER ANCHOR SPACING

| Revisions By: |          |    |
|---------------|----------|----|
| 3             | -        | -  |
| 4             | -        | -  |
| 3             | 06/05/18 | VM |
| 2             | 08/12/16 | JG |
| 1             | 02/08/16 | JG |

**CRL**  
ALUMINUM

C.R. LAURENCE CO. ARCHITECTURAL PRODUCTS  
2503 E. Vernon Avenue, Los Angeles, CA 90058-1897  
PH: (800) 421-6144 FX: (800) 587-7501 www.crlaurence.com

ICC ESR-3269

ICC ESR

Description:

GRS  
GLASS RAILING SYSTEM  
FOR TEMPERED MONOLITHIC  
1/2", 5/8" & 3/4" THK. GLASS

ELEVATIONS AND DETAILS

SURFACE MOUNT AND  
FASCIA MOUNT OPTIONS

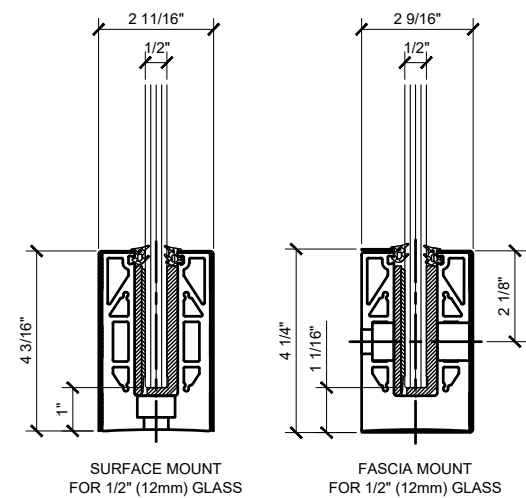
Drawn By: JG

Date: 12/15/2015

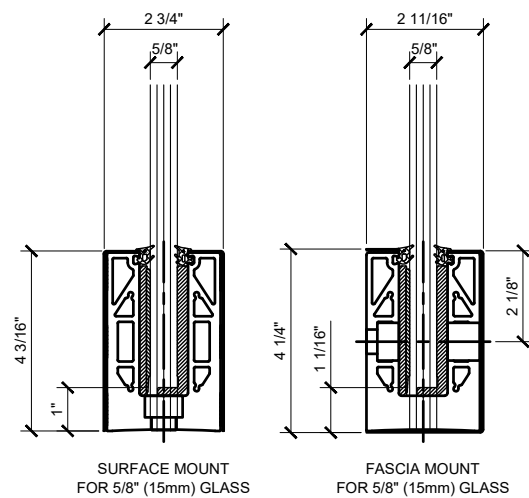
Scale: AS NOTED

File Name:  
CRL GRS Monolithic Glass Railing System.dwg

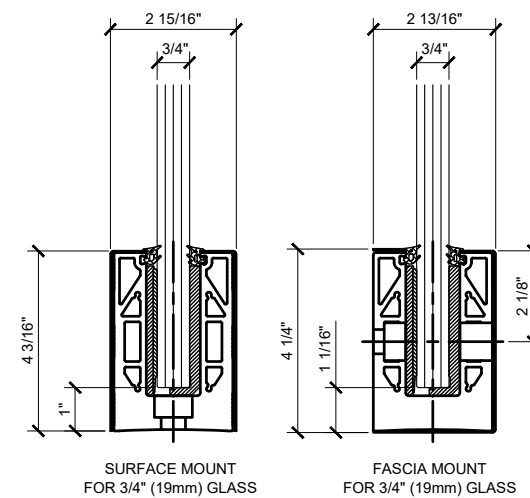
Sheet



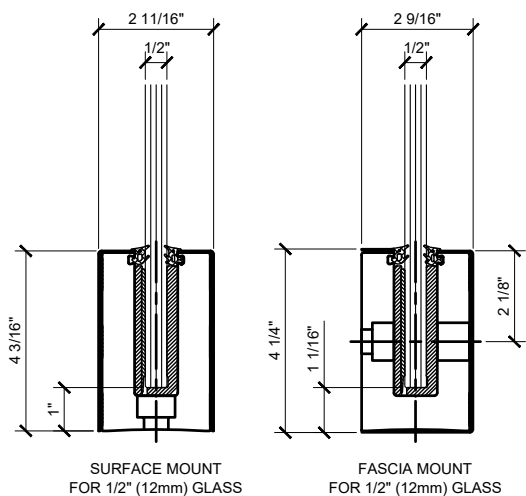
**8B SERIES BASE SHOE**



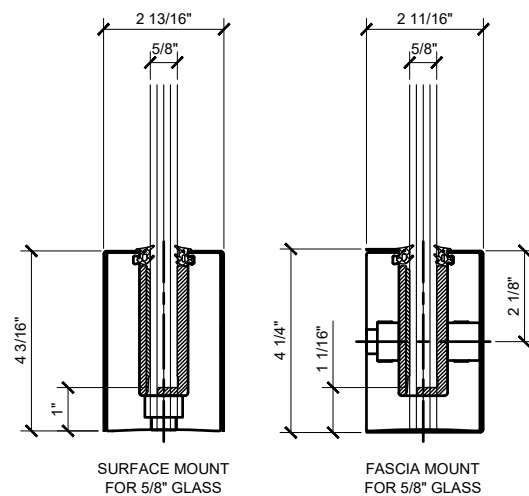
**8B58 SERIES BASE SHOE**



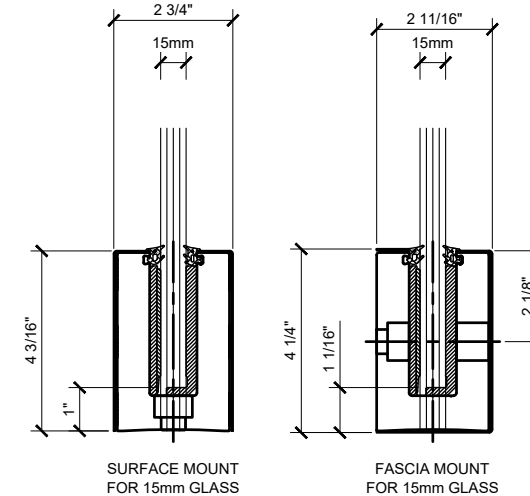
**8B34 SERIES BASE SHOE**



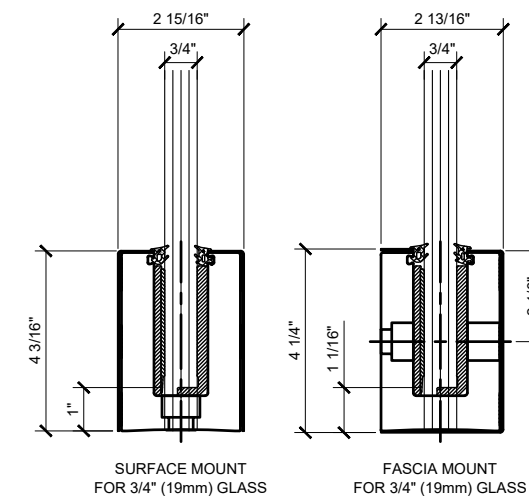
**B5S SERIES BASE SHOE**



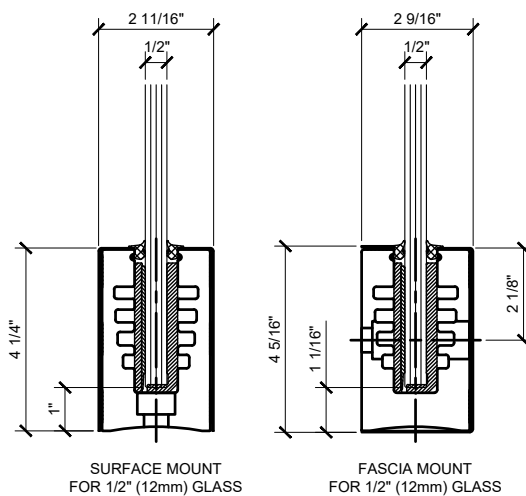
**B6N SERIES BASE SHOE**



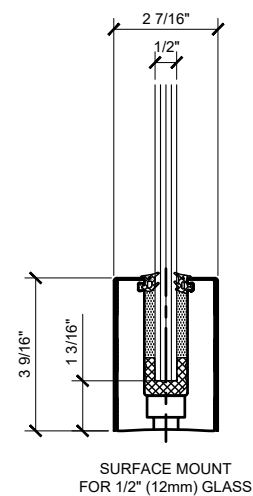
**B6S SERIES BASE SHOE**



**B7S SERIES BASE SHOE**

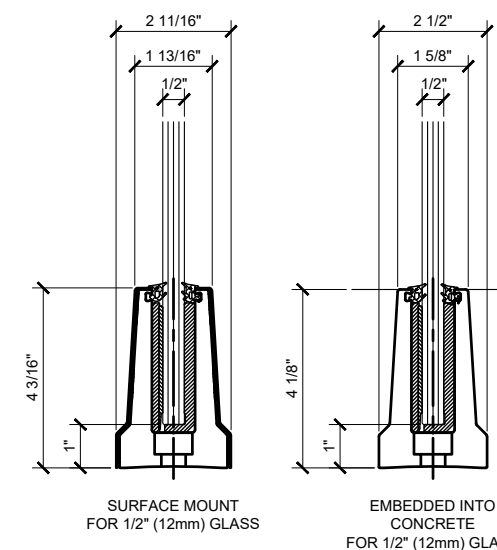


**B5A SERIES BASE SHOE**



**B5L SERIES BASE SHOE**

\*NOTE: B5L BASE SHOE CANNOT BE USED W/ TAPER-LOC ®.



**B5T SERIES BASE SHOE**

| Revisions By: |          |    |
|---------------|----------|----|
| 3             | -        | -  |
| 4             | -        | -  |
| 3             | 06/05/18 | VM |
| 2             | 08/12/16 | JG |
| 1             | 02/08/16 | JG |

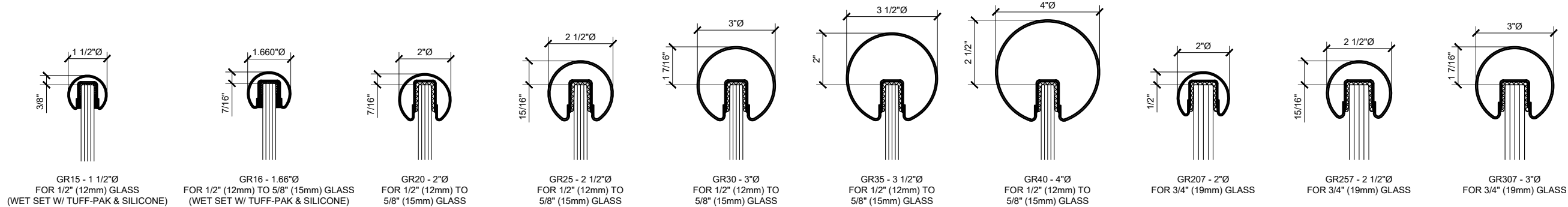
**CRL ALUMINUM**  
C.R. LAURENCE CO. ARCHITECTURAL PRODUCTS  
2503 E. Vernon Avenue, Los Angeles, CA 90058-1897  
PH: (800)-421-6144 FX: (800)-867-7501 www.crlaurence.com

ICC ESR-3269

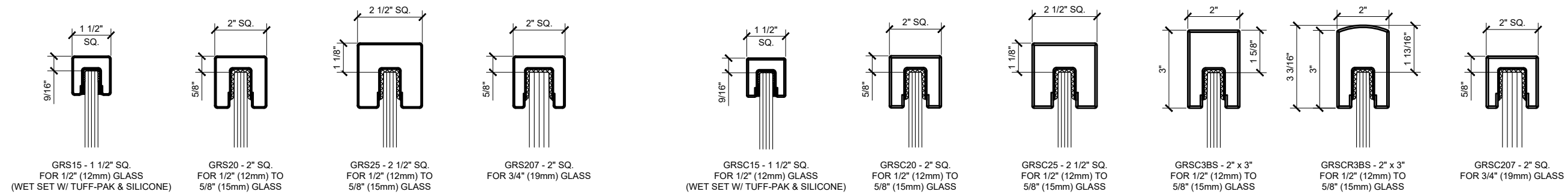
Description: GRS  
GLASS RAILING SYSTEM  
FOR TEMPERED MONOLITHIC  
1/2", 5/8" & 3/4" THK. GLASS

BASE SHOE OPTIONS  
SURFACE & FASCIA MOUNT

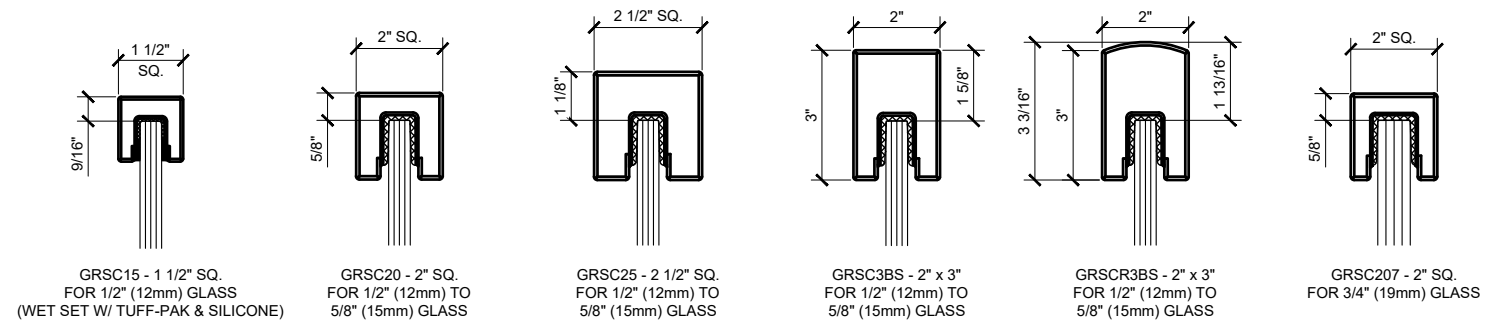
Drawn By: JG  
Date: 12/15/2015  
Scale: AS NOTED  
File Name:  
CRL GRS Monolithic Glass Railing System.dwg  
Sheet



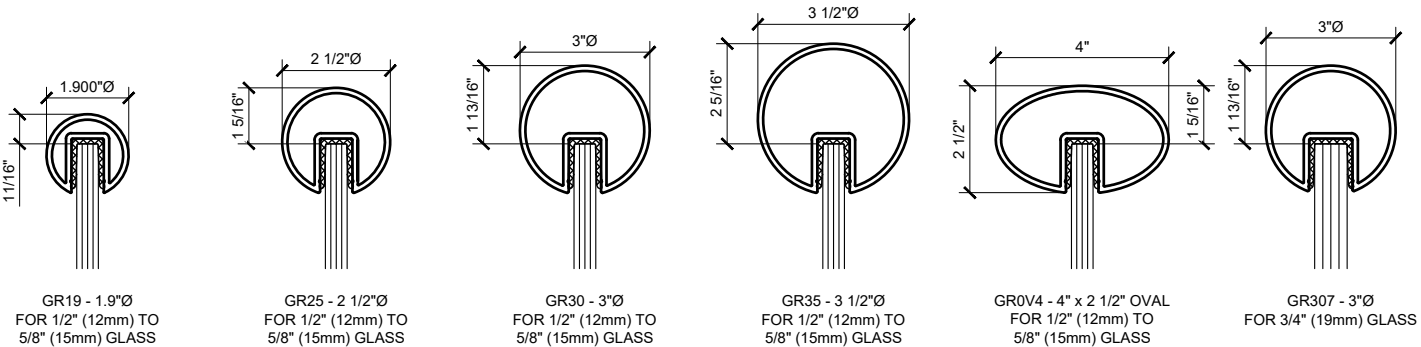
#### BUMP-FORMED & WELDED PREMIUM RADIUS PROFILE CAP RAIL



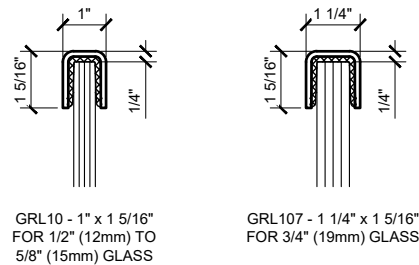
#### BUMP-FORMED & WELDED PREMIUM SQUARE PROFILE CAP RAIL



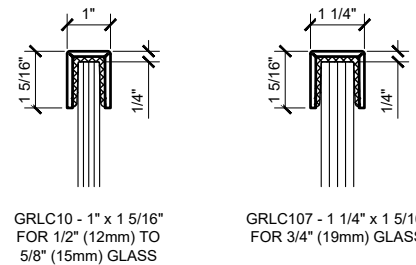
#### SQUARE PROFILE CRISP CORNER CAP RAIL



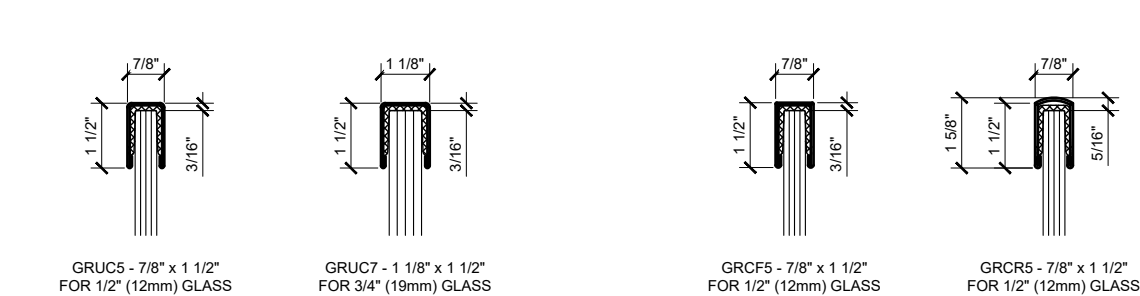
#### EXTRUDED ALUMINUM CAP RAIL



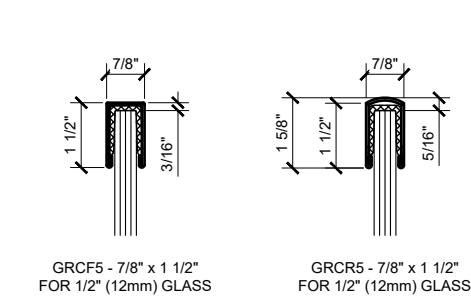
#### LOW PROFILE 11 GAUGE CAP RAIL



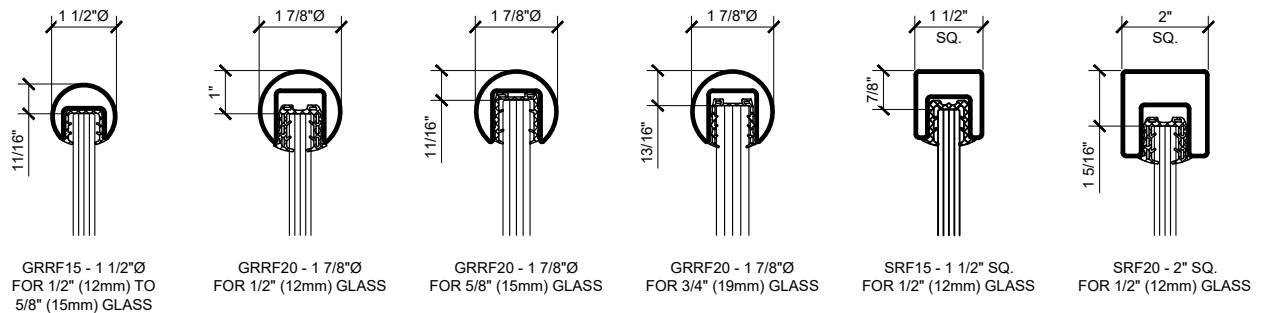
#### LOW PROFILE 11 GAUGE CRISP CORNER CAP RAIL



#### U-CHANNEL 18 GAUGE CAP RAIL



#### U-CHANNEL 18 GAUGE CRISP CORNER CAP RAIL



#### ROLL-FORMED CAP RAIL

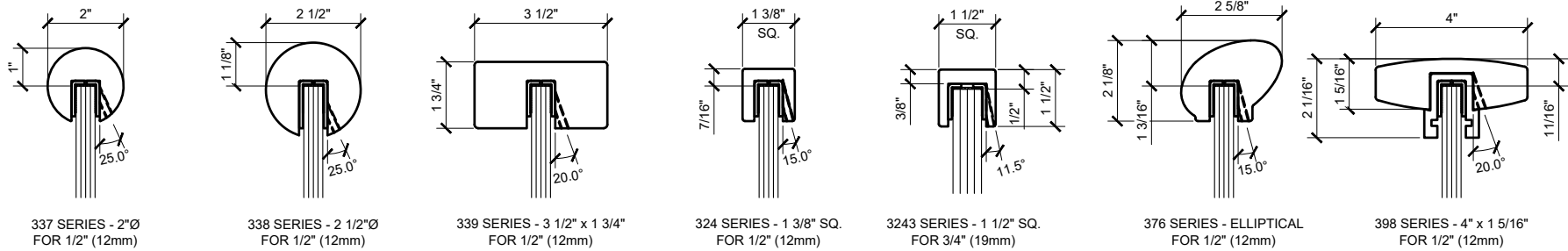
| Revisions By: |          |    |
|---------------|----------|----|
| 3             | -        | -  |
| 4             | -        | -  |
| 3             | 06/05/18 | VM |
| 2             | 08/12/16 | JG |
| 1             | 02/08/16 | JG |



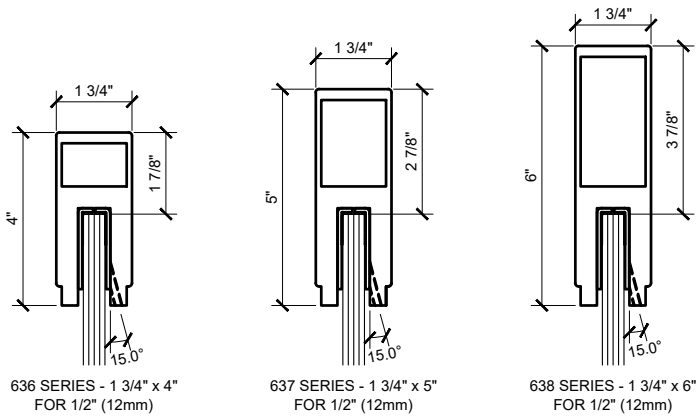
Description: GRS  
GLASS RAILING SYSTEM  
FOR TEMPERED MONOLITHIC  
1/2", 5/8" & 3/4" THK. GLASS

CAP RAIL OPTIONS

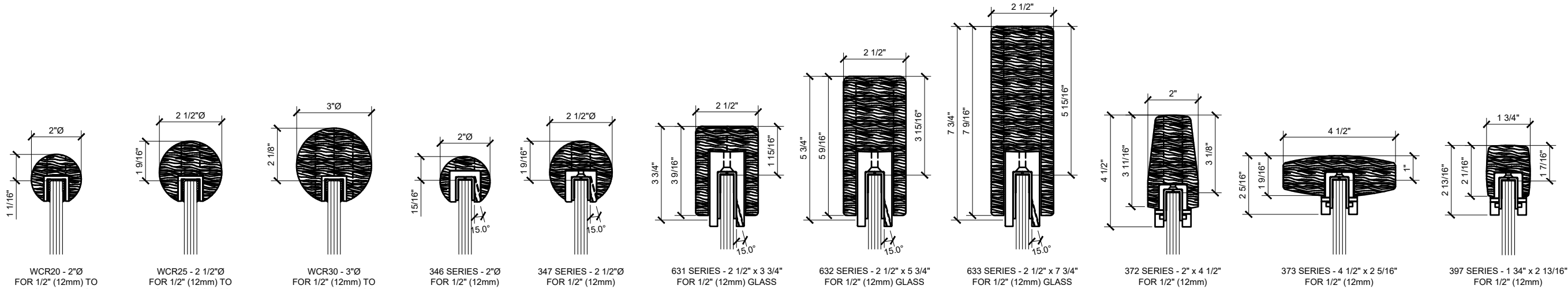
|   |
|---|
| Drawn By: JG                                |
| Date: 12/15/2015                            |
| Scale: AS NOTED                             |
| File Name:                                  |
| CRL GRS Monolithic Glass Railing System.dwg |
| Sheet                                       |



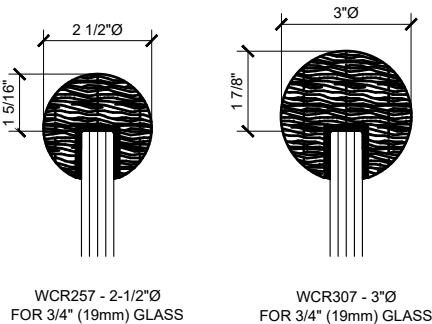
BLUMCRAFT ® EXTRUDED SOLID ALUMINUM CAP RAIL



BLUMCRAFT ® EXTRUDED ALUMINUM CAP RAIL



WOOD CAP RAIL




WOOD CAP RAIL

| Revisions By: |          |    |
|---------------|----------|----|
| 5             | -        | -  |
| 4             | -        | -  |
| 3             | 06/05/18 | VM |
| 2             | 08/12/16 | JG |
| 1             | 02/08/16 | JG |



C.R. LAURENCE CO. ARCHITECTURAL PRODUCTS  
2503 E. Vernon Avenue, Los Angeles, CA 90059-1897  
PH: (800)-421-6144 FX: (800)-587-7501 www.crlaurence.com



ICC ESR-3269

Description: GRS  
GLASS RAILING SYSTEM  
FOR TEMPERED MONOLITHIC  
1/2", 5/8" & 3/4" THK. GLASS

CAP RAIL OPTIONS

|   |
|---|
| Drawn By: JG                                |
| Date: 12/15/2015                            |
| Scale: AS NOTED                             |
| File Name:                                  |
| CRL GRS Monolithic Glass Railing System.dwg |
| Sheet                                       |