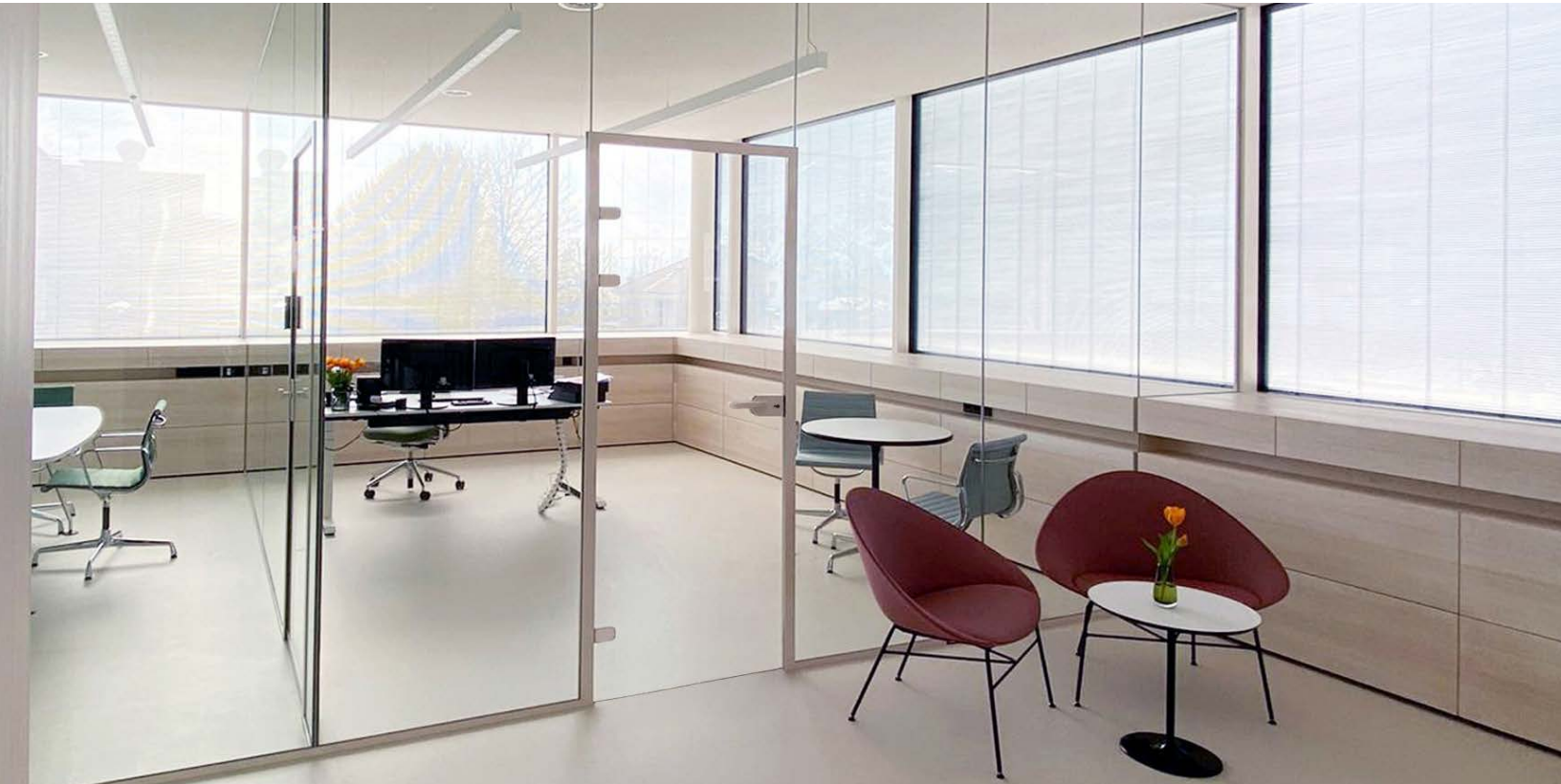


Fallbrook, Fallbrook XL, Fallbrook XL NY
Glass Partition Systems



Fallbrook, Fallbrook XL, Fallbrook XL NY Glass Partition Systems



At a Glance

The Fallbrook Series strikes a compelling balance between framed and frameless interior partition systems. Ideal for office environments, Fallbrook systems seamlessly divide spaces while providing transparency and an attractive, minimalist aesthetic.

Fallbrook

- Unique, ultra-narrow floating door frame
- Round or square door hardware profiles
- Dry-glazed system for easy installation
- Height adjustable hinges, no drilling required
- For 5/16", 3/8", and 1/2" monolithic tempered glass

Fallbrook XL

- Utilizes 1" insulating glass to mitigate sound
- Low-profile 1-7/8" framing
- STC 42 rating for fixed glazing
- Front load, dry-glazed system
- For use with laminated or monolithic glass

Fallbrook XL NY

- Grid system for Fallbrook XL Interior Partition
- Versatile and visually appealing
- Field-applied muntin design
- Free positioning with no drilling required
- Grid clamps and adapters included



Table of Contents



P4-9

Fallbrook Interior Partition

- P4 - Fallbrook Features & Benefits
- P5 - Fallbrook Profiles
- P6 - Fallbrook Top Lite
- P7 - Fallbrook Swing Door
- P8 - Fallbrook Fittings & Accessories
- P9 - Fallbrook Elevations & Details



P10-13

Fallbrook XL Interior Partition

- P10 - Fallbrook XL Features & Benefits
- P11 - Fallbrook XL Profiles & STC Ratings
- P12 - Fallbrook XL Fittings & Accessories
- P13 - Fallbrook XL Elevations & Details



P14-15

Fallbrook XL NY Grid System

- P14 - Fallbrook XL NY Features & Benefits
- P15 - Fallbrook XL NY System Components



P16-21

Hardware & Components

- P16 - Hardware & Components
- P17 - Fallbrook Door & Hinge Limitations
- P18 - Fallbrook Profiles & Part Numbers
- P20 - Fallbrook XL Profiles & Part Numbers
- P21 - Fallbrook XL NY Adapter Profiles & Part Numbers

Fallbrook Interior Partition System

The Fallbrook Interior Partition System offers an imaginative design unique to framed partition systems. A slim floating door frame produces an eye-catching, minimalist aesthetic and all-glass spans that enhance transparency and daylighting. Low-profile door hardware and sidelite u-channels complete the exceptional look.



Features & Benefits

- Unique, ultra-slim floating door frame
- Round or square door hardware profiles
- Dry-glazed system for easy installation
- Height adjustable hinges, no drilling required
- Door-to-wall and door-to-glass frame sets available
- Compatible with pivoting doors
- Maximum door height: 10 feet
- Maximum door width: 36"
- For 5/16", 3/8", and 1/2" monolithic tempered glass

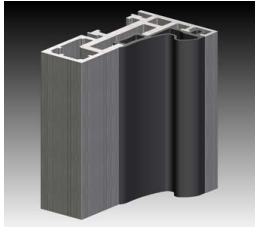


Fallbrook Door Frame Profiles

Door Jamb/Header at Sidelite/Transom



Door Jamb/Header



Glass door: 5/16-1/2" | 8-12 mm

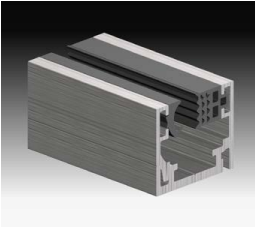
Glass side panel: 5/16-5/8" | 8-16 mm

Stock finishes: matte black, satin anodized

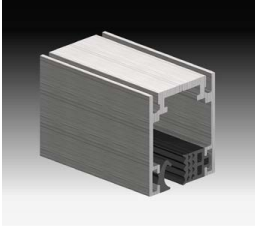
Gasket: TPE in gray or black

Fallbrook Fixed Glass Profiles

Wall and Sill



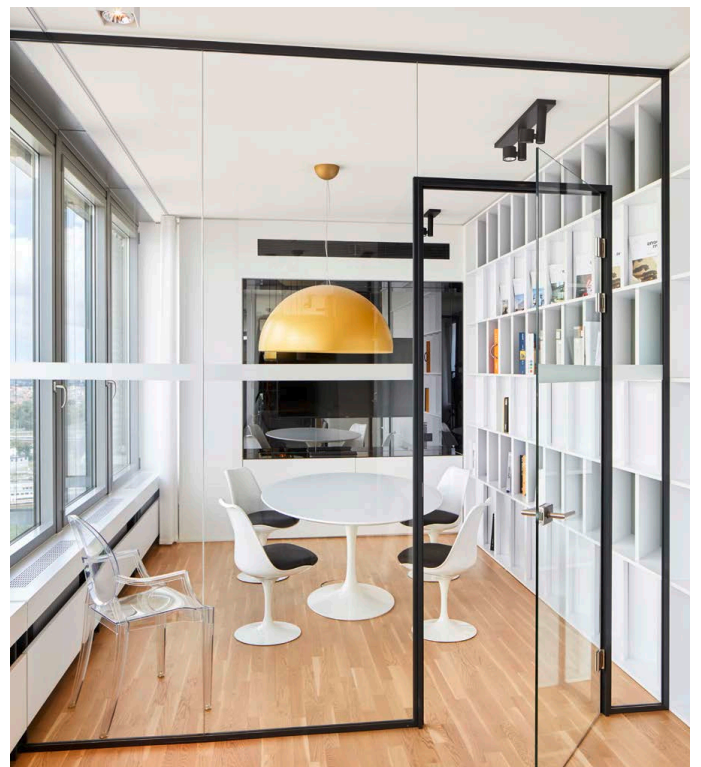
Header



Glass: 5/16-5/8" | 8-16 mm

Stock finishes: matte black, satin anodized

Gasket: TPE in gray or black



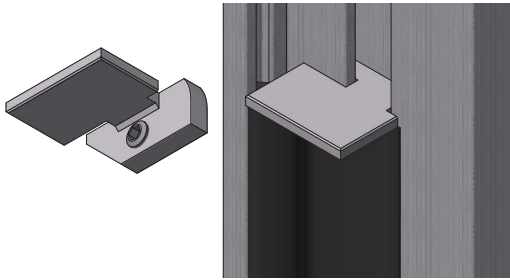
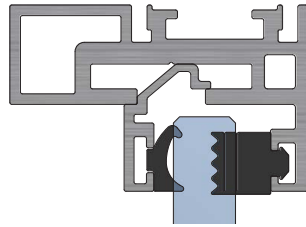
Fallbrook Floating Transom

The Fallbrook system offers a floating transom that creates a unique, floor-to-ceiling doorframe. The transom can accommodate 5/16" and 3/8" monolithic tempered glass and remains stationary as the door pivots. The Fallbrook floating transom produces tall glass spans and provides unobstructed views.

- Unique floor to ceiling frame visual
- Provides unobstructed views
- Glass affixed to frame with special clip bar
- For 5/16" and 3/8" monolithic glass

Installation

1. The top lite is connected with a proprietary CLIP-TL bar and seals are installed.
2. Glass fixing is done effortlessly with sliding blocks and grub screws.



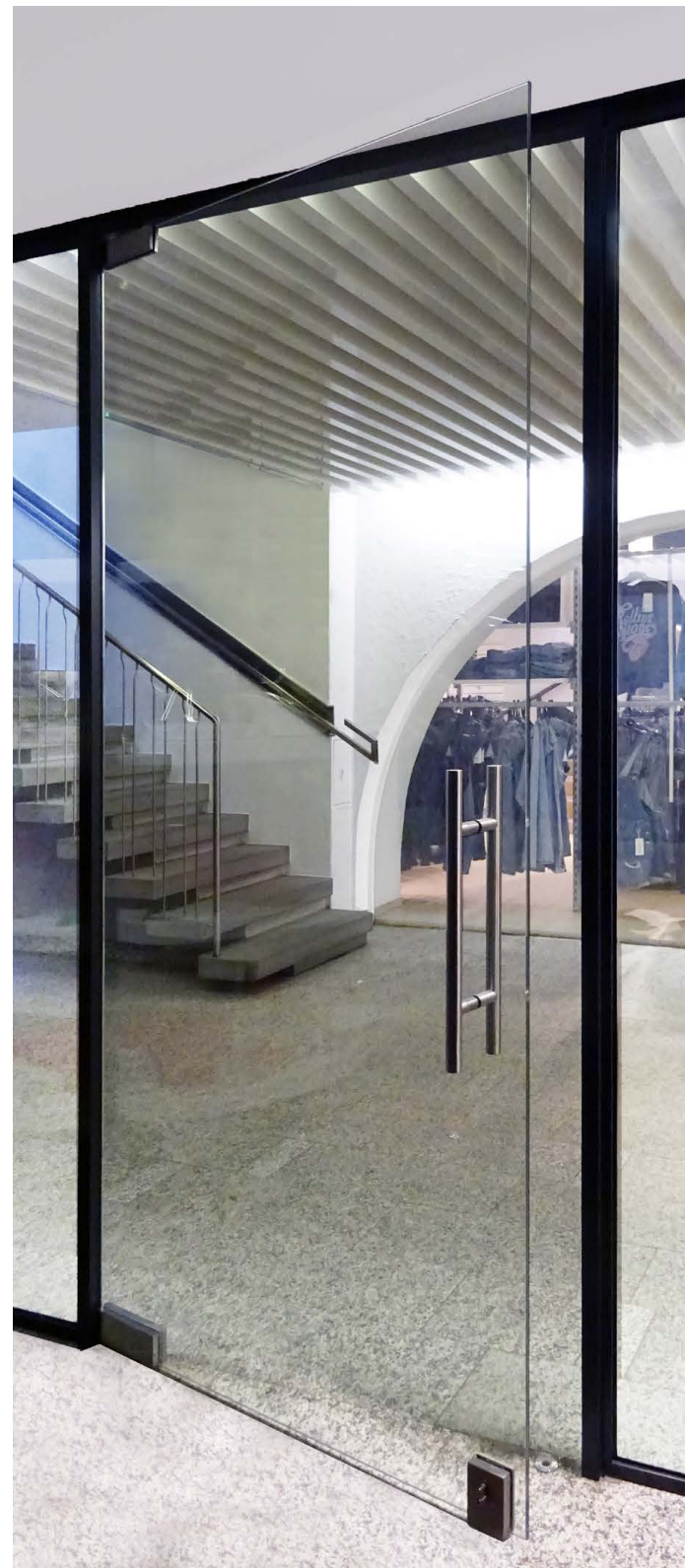
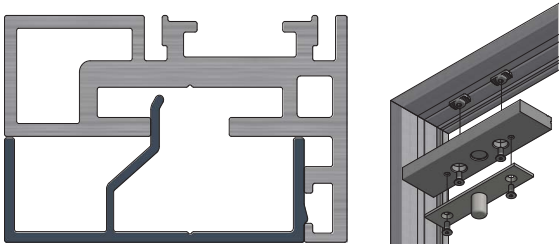
Fallbrook Swing Door

For greater versatility, the Fallbrook Partition System lets you create a self-closing swing door from a single action door using a unique CLIP-RC bar. The door can remain open in either direction at a 90-degree angle and can also accommodate floor locks. The swing door is ideal for heavy traffic and can provide soft closing.

- Self-closing door swings in either direction
- Holds at 90-degree angles
- Full selection of handle hardware
- Accommodates floor locks
- For 3/8" to 1/2" monolithic glass

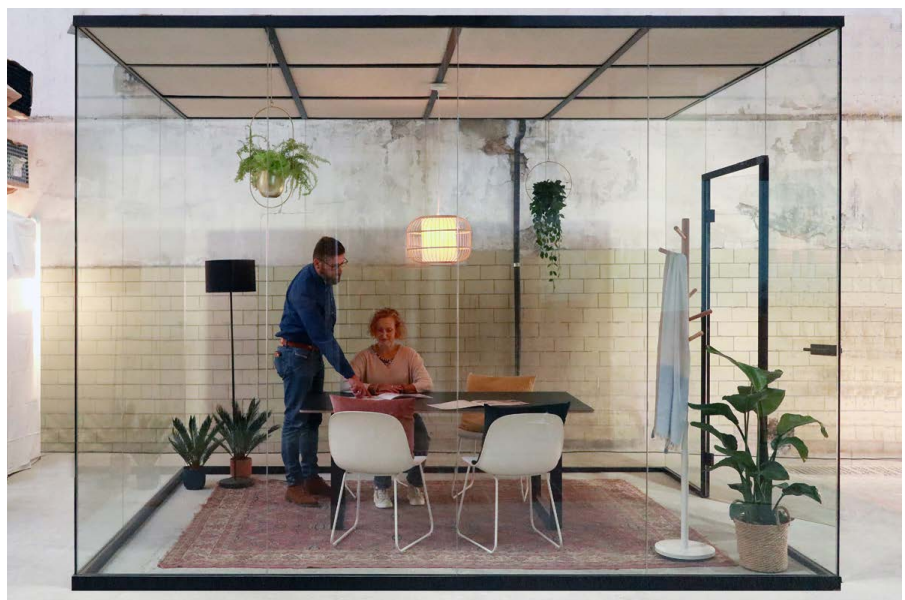
Installation

1. CLIP-RC bar is easily clipped into place
2. Swing door block is mounted with hammerhead nuts
3. Upper pivot is installed

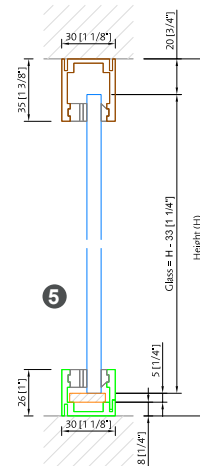
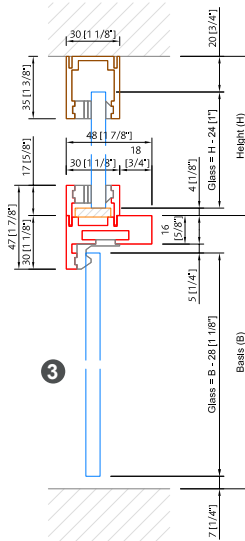
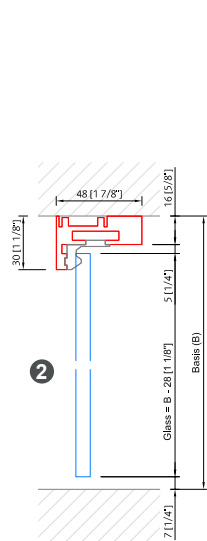
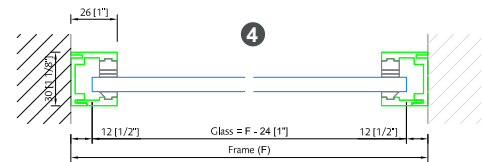
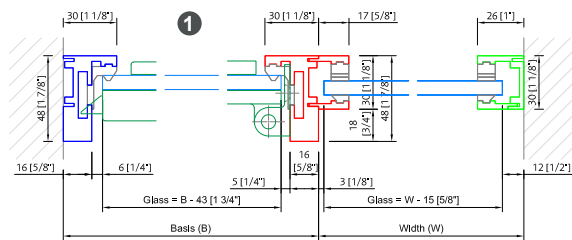
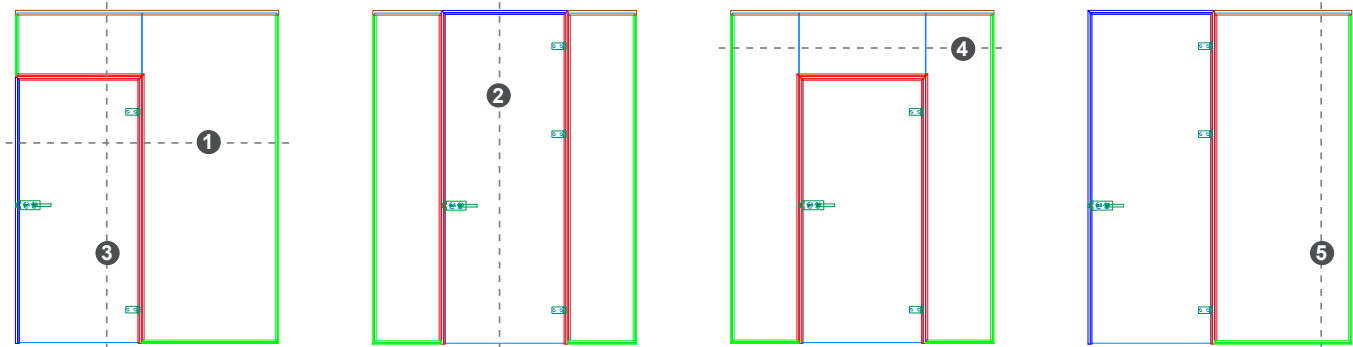


Fallbrook Fittings & Accessories

FHHN	Hammer head nut 5/16-3/8" 8-10 mm glass door		
FHHN12	Hammer head nut 1/2" 12 mm glass door		
FSP	Striking plate 5/16-1/2" 8-12 mm		
FFCC	Floor and corner connector		
FFCCL	Top frame and frame connector		
FTC	Base and top frame connector		
FXCH	90° corner connector (horizontal) for floor and ceiling profile		



Fallbrook Elevations & Details



Maximum door width = 36" (914 mm)
 Maximum door height = 118" (2997 mm)
 Maximum door weight = 190 lbs (86 kg)

Fallbrook XL Interior Partition System

The Fallbrook XL Interior Partition System strikes a balance between acoustic performance and aesthetics. Featuring 1" insulating glass panels, the system provides sound attenuation for enhanced privacy. Visually, Fallbrook XL is designed with a low-profile door frame and vertical extrusions, which sets it apart from traditional framed partition systems. This leads to greater visibility and daylight diffusion.



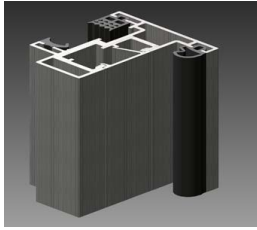
Features & Benefits

- Utilizes 1" insulating glass to mitigate sound
- Low-profile 1-7/8" framing
- STC 42 rating for fixed glazing
- Front load, dry-glazed system
- Maximum door height: 10 feet
- Maximum door width: 36"
- Compatible with wood or glass pivot doors
- Grid system available
- For use with laminated or monolithic glass

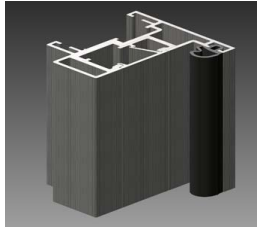


Fallbrook XL Door Frame Profiles

Door Jamb/Header at Sidelite/Transom



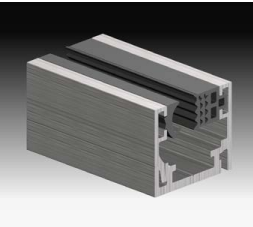
Door Jamb/Header



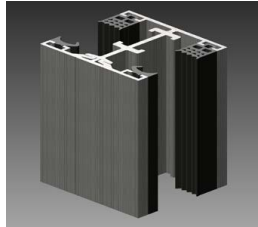
Glass door: 3/8-1/2" | 10-12 mm
Glass side panel: 13/16-11/8" | 20-28 mm
Stock finishes: matte black, satin anodized
Gasket: TPE in gray or black

Fallbrook XL Fixed Glass Profiles

Wall and Sill

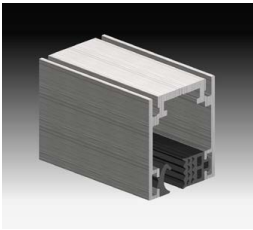


Intermediate Vertical

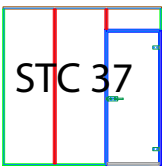


Glass: 5/16-5/8" | 8-16 mm
Stock finishes: matte black, satin anodized
Gasket: TPE in gray or black

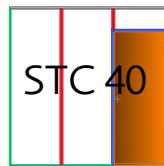
Header



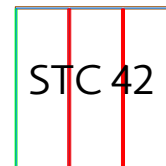
Sound Insulation (STC)



SETUP A - STC 37
 Glass door incl. drop-down seal with glass side panels and transom



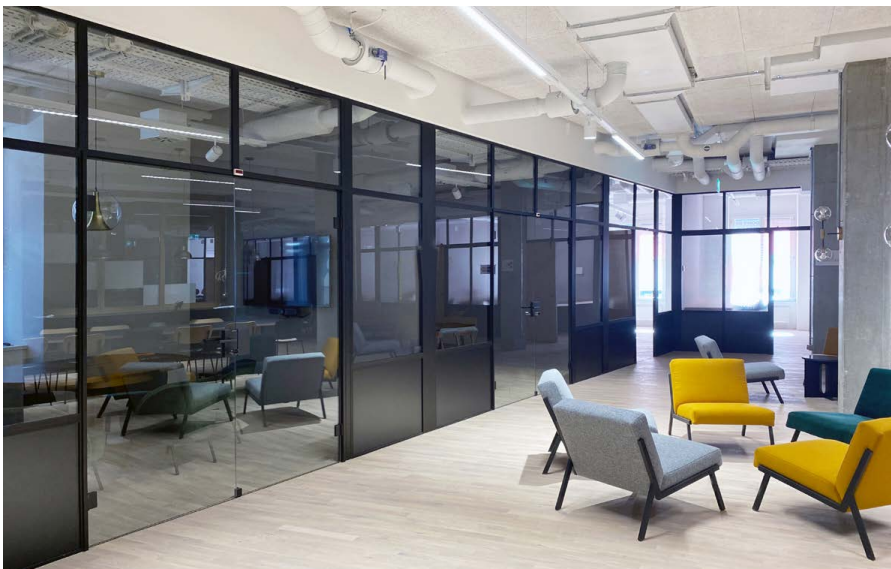
SETUP B - STC 40
 Wooden sound-proof door incl. drop-down seal with glass side panels and transom



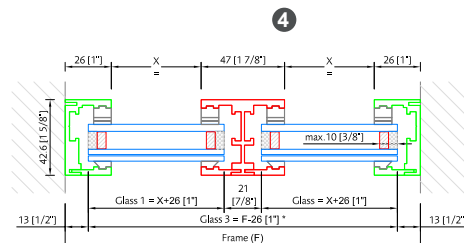
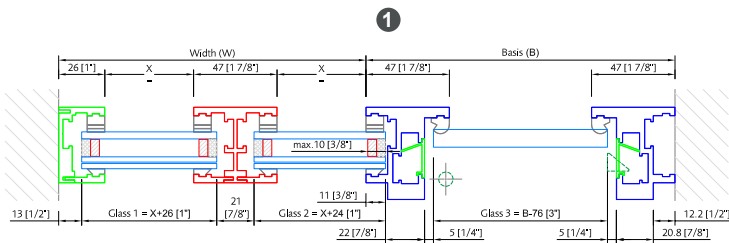
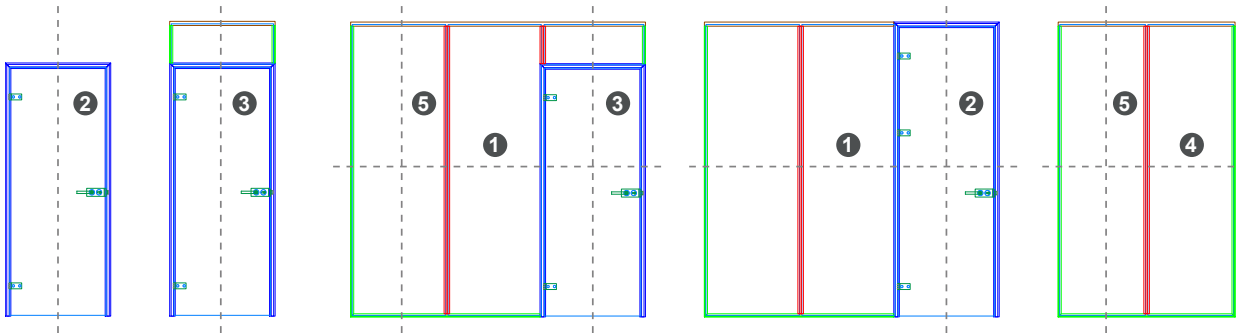
SETUP C - STC 42
 Fixed glazing

Fallbrook XL Fittings & Accessories

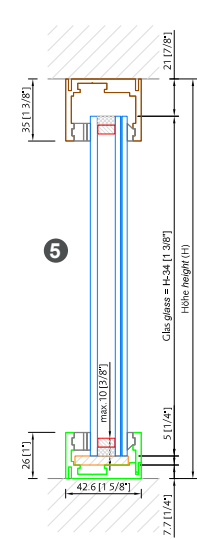
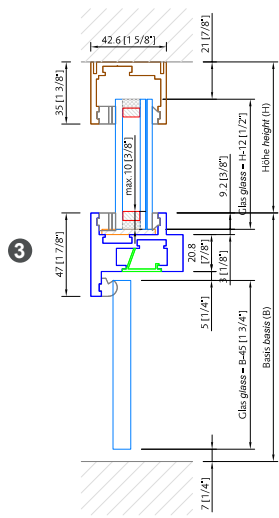
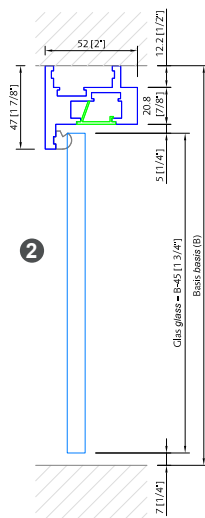
FXHHN	Hammer head nut XL 3/8-1/2" 10-12 mm		
FXSP	Striking plate XL 3/8-1/2" 10-12 mm		
FFCC	Floor and corner connector		
FFCCL	Head channel corner connector		
FXCH	90° corner connector (horizontal) for floor and ceiling profile		
FXCZ	Z connector		



Fallbrook XL Elevations & Details



* without FRAME T XL



Maximum door width = 36" (914 mm)
 Maximum door height = 118" (2997 mm)
 Maximum door weight = 190 lbs (86 kg)

Fallbrook XL NY Grid System

Fallbrook XL NY is a muntin grid system specifically developed as a design option for the Fallbrook XL Interior Partition. The aluminum grid system is highly versatile and can be freely positioned. Glass notching or drilling isn't required, which expedites installation.



Features & Benefits

- Grid system for Fallbrook XL Interior Partition
- Versatile and visually appealing
- Field-applied muntin design
- Free positioning with no glass notching required
- Matte black and satin anodized finishes
- Grid clamps and adapters included

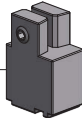


Fallbrook XL NY Grid System Components

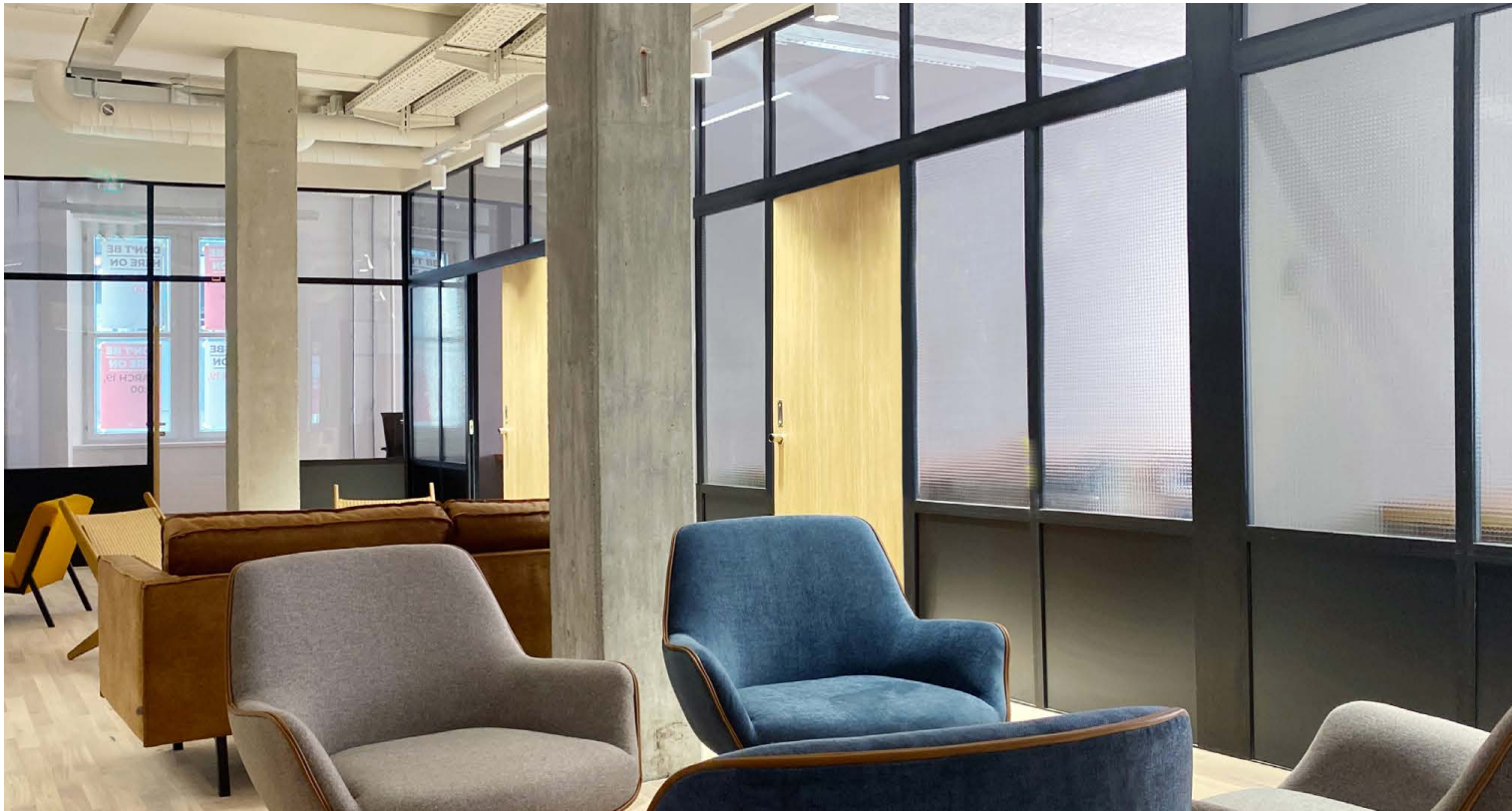
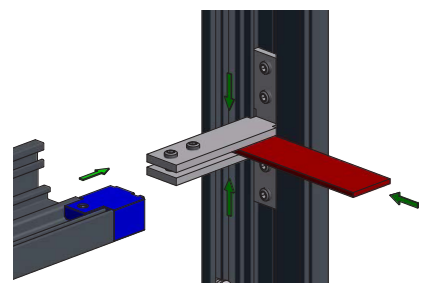
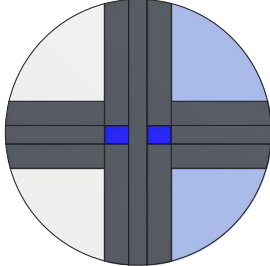
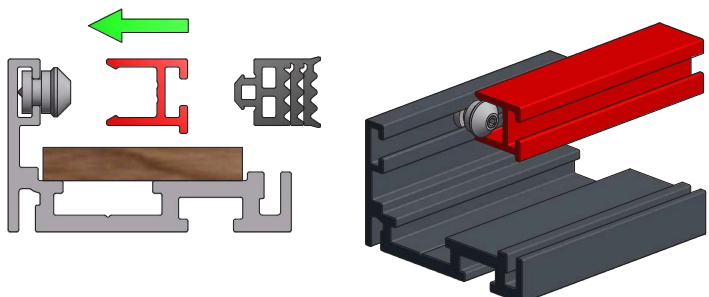
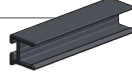
FXNYK Clamping head




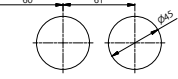

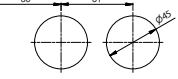

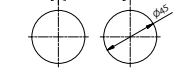

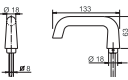
FXNYB Block

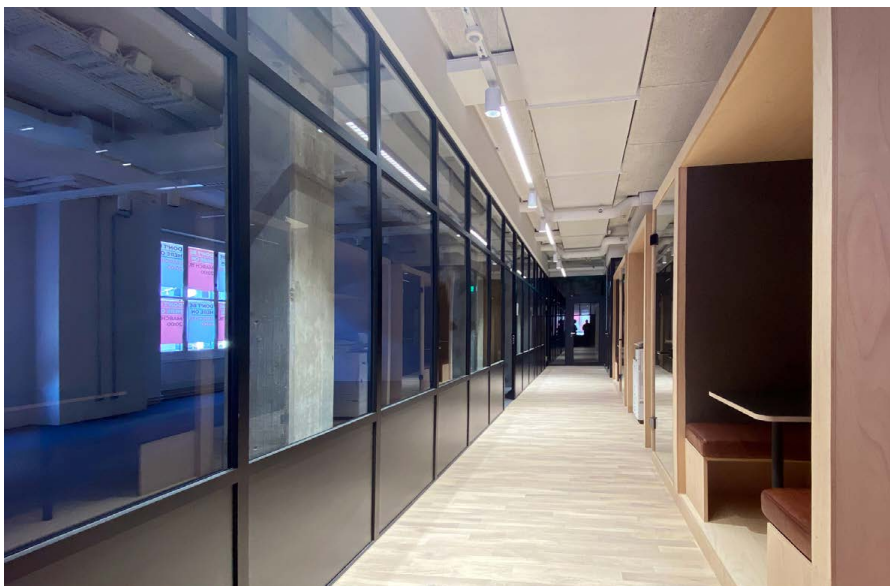


Adapter Profile Frame
Length: 118" or 236"



Door Hardware & Components

Item no.	Finishes	Description - Fittings		
FHSSA FHSMBL	Satin anodized Matte Black	Door hinge, square not self-closing		
FLKSSA FLKSMBL	Satin anodized Matte Black	Lock case, square incl. Europrofile cylinder		
FLKDSA	Satin anodized	Lock case, round incl. Europrofile cylinder		
FLSSA FLSMBL	Satin anodized Matte Black	Lock case, square non-locking		
FLDSA	Satin anodized	Lock case, round non-locking		
FLHSA FLHMBL	Satin anodized Matte Black	Set of levers, square		



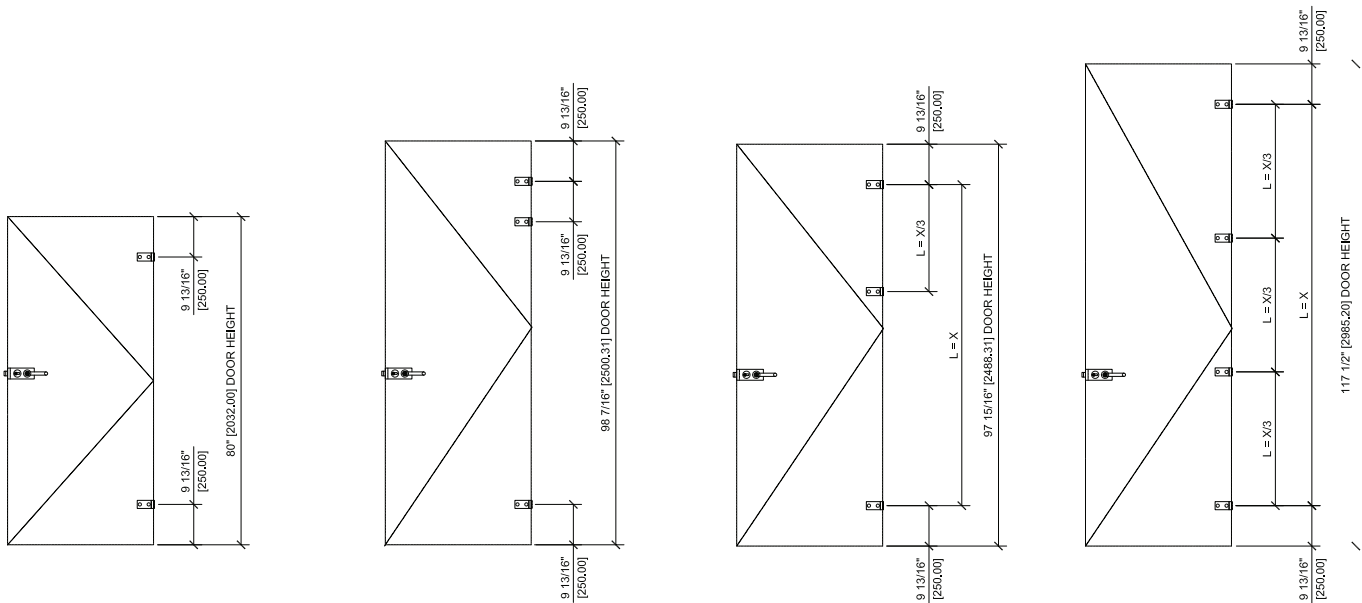
Door and Hinge Limitations

Maximum door width = 36" (914 mm)
 Maximum door height = 118" (2997 mm)
 Maximum door weight = 190 lbs (86 kg)

Number of hinges required:

- 2 hinges - door weight up to 110 lbs (50 kg) OR door height up to 80" (2032 mm)
- 3 hinges - door weight up to 110 lbs (50 kg) and up to 190 lbs (86 kg) OR door height up to 80" to 98-7/16"
- 4 hinges - door height over 98-7/16" to maximum height 118" (3000 mm) regardless of weight.

Recommended hinge locations:



Fallbrook Door Frame Profiles

Wall-to-glass door frame 118" length

FW2GD3SA	Satin anodized
FW2GD3MBL	Matte black

Wall-to-glass door frame 43" length

FW2GD1SA	Satin anodized
FW2GD1MBL	Matte black

Glass-to-glass door frame 118" length

FG2GD3SA	Satin anodized
FG2GD3MBL	Matte black

Glass-to-glass door frame 43" length

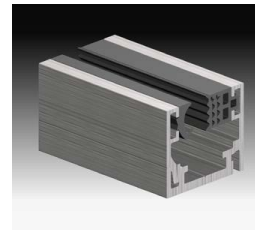
FG2GD1SA	Satin anodized
FG2GD1MBL	Matte black



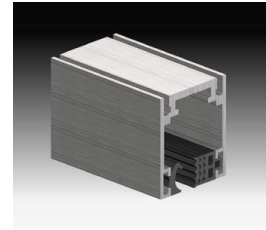
Door Jamb/Header
at Sidelite/Transom



Door Jamb/Header



Wall and Sill



Header

Fallbrook Door Frame Sets

Wall-to-glass

FTW2GDSA	Satin anodized
FTW2GDMBL	Matte black

Glass-to-glass

FTG2GDSA	Satin anodized
FTG2GDMBL	Matte black

Fallbrook Fixed Sidelight Frame Profiles

Wall profile

FW2GF3SA	Satin anodized
FW2GF3MBL	Matte black

Ceiling profile

FC2GF3SA	Satin anodized
FC2GF3MBL	Matte black

Fallbrook Door Profiles & Fixed Glazing

Door frame profile

FBD6SA	Satin anodized
FBD6MBL	Matte black

Fixed profile frame

FRMD6SA	Satin anodized
FRMD6MBL	Matte black

Clip profile

FCLPD6SA	Satin anodized
FCLPD6MBL	Matte black

Top frame fixed profile

FTPD6SA	Satin anodized
FTPD6MBL	Matte black

Fallbrook Gaskets

Door jamb gaskets

FDJBL	Black
FDJBL25	Black
FDJGR	Grey
FDJGR25	Grey

Glazing gaskets

FFPBL	Black
FFPBL25	Black
FFPGR	Grey
FFPGR25	Grey

Push-in glazing gaskets

FRGBL	Black
FRGBL25	Black
FRGGR	Grey
FRGGR25	Grey

Fallbrook XL Door Frame Profiles

Door header/jamb set for wall - 118" length

FXW2GD3SA	Satin anodized
FXW2GD3MBL	Matte black

Door header/jamb set for wall - 43" length

FXW2GD1SA	Satin anodized
FXW2GD1MBL	Matte black

Door header/jamb set for sidelites - 118" length

FXG2GD3SA	Satin anodized
FXG2GD3SMBL	Matte black

Door header/jamb set for sidelites - 43" length

FXG2GD1SA	Satin anodized
FXG2GD3MBL	Matte black

Fallbrook XL Door Frame Sets

Fixed frame channel set - 118" length

FXW2GF3SA	Satin anodized
FXW2GF3MBL	Matte black

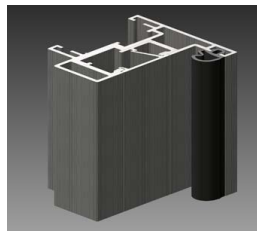
Vertical mullion set - 118" length

FXG2GF3SA	Satin anodized
FXC2GF3MBL	Matte black

Door Frame Profiles

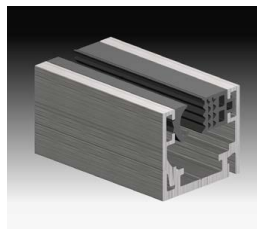


Door Jamb/Header at Sidelite/Transom

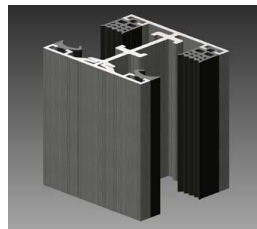


Door Jamb/Header

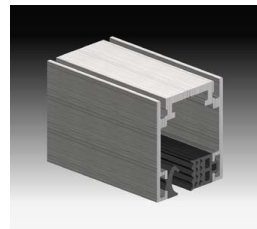
Fixed Glass Profiles



Wall and Sill



Intermediate Vertical



Header

Fallbrook XL Fixed Sidelight Frame Profiles

Door head/jamb

FXBD6SA	Satin anodized
FXBD6MBL	Matte black

Clip profile

FCLPD6SA	Satin anodized
FCLPD6MBL	Matte black

Fixed panel clip

FXCLPD6SA	Satin anodized
FXCLPD6MBL	Matte black

Fixed frame channel base

FXFRMD6SA	Satin anodized
FXFRMD6MBL	Matte black

Intermediate vertical base

FXFRMT6SA	Satin anodized
FXFRMT6MBL	Matte black

Fixed panel head channel

FXTPD6SA	Satin anodized
FXTPD6MBL	Matte black

Fallbrook XL Gaskets

Door jamb gasket

FXDJBL	Black
---------------	-------

Glazing gaskets

FFPBL	Black
FFPBL25	Black
FFPGR	Grey
FFPGR25	Grey

Glazing gaskets for 1" glass

FFP14BL	Black
FFP14GR	Grey

Glazing gaskets for 1-1/18" glass

FFP16BL	Black
FFP16GR	Grey

Push-in glazing gaskets

FRGBL	Black
FRGBL25	Black
FRGGR	Grey
FRGGR25	Grey

Fallbrook XL NY Adapter Profiles

118" length

FXNYF3SA	Satin anodized
FXNYF3MBL	Matte black

236" length

FXNY6SA	Satin anodized
FXNY6MBL	Matte black

Block

FXNYBSA	Satin anodized
FXNYBMBL	Matte black

Fallbrook XL NY Accessories



C.R. Laurence Co., Inc.
Corporate Headquarters
2503 E Vernon Ave.
Los Angeles, CA 90058

(800) 421-6144
crlaurence.com

