

I HEADER PREPARATION

- A. DIM A MUST BE MAINTAINED FROM JAMB TO CENTER LINE OF SPINDLE.
- B. F MUST BE MAINTAINED FROM PIVOT SIDE OF HEADER TO $\frac{1}{8}$ " OF SPINDLE REGARDLESS OF HEADER WIDTH
- C. FOR MORE DETAILS REFER TO TEMPLATE# 10-137

II PIVOT INSTALLATION

- A. REFER TO TEMPLATES REQUIRED.

III DOOR PREPARATION

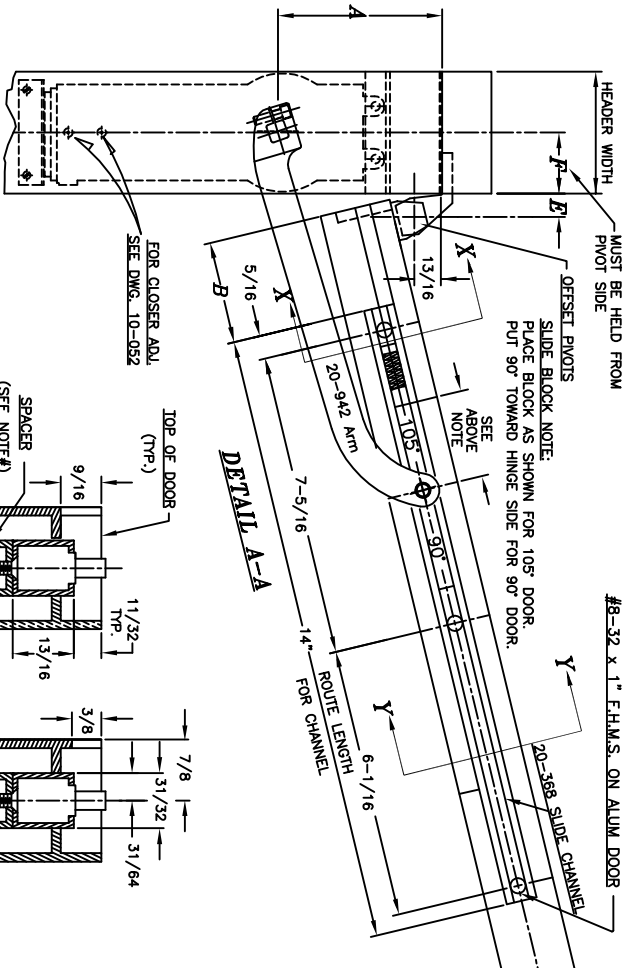
- A. ROUTE TOP OF DOOR FOR SLIDE CHANNEL INSTALLATION. (DETAIL A-A), ON ALUM. DOORS, SPACERS MAY BE NEEDED TO MAINTAIN REQ. 11/32" DIM. SEE X-X
- B. ROUTING IS NEEDED ON STOP SIDE OF DOOR FOR ARM CLEARANCE. SEE B-B

IV DOOR INSTALLATION

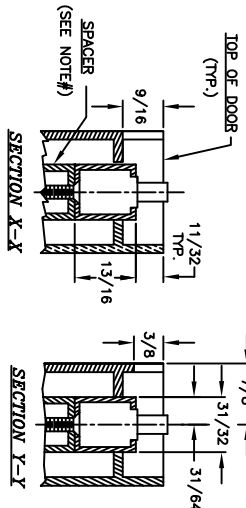
- A. SET ON PIVOTS. ADJUST FOR CLEARANCES.

V COMPLETE INSTALLATION

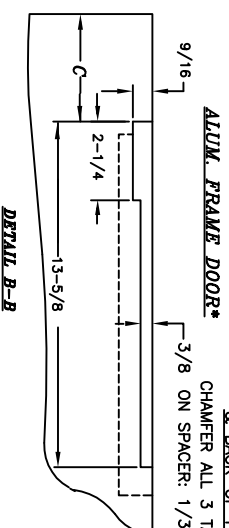
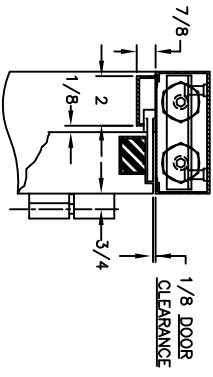
- A. MOUNT ARM ON SPINDLE AND SECURE WITH 1/4"-20 x 7/8" SOC. HD. CAP SCREW PROVIDED.
- B. OPEN DOOR AND ACTUATE ARM INTO OPEN POS. SLIP ARM OVER SLIDE PIN AND SECURE WITH PIN RETAINER.
- C. ADJUST CLOSER TO DESIRED DOOR SPEED. INSTALL ARM COVER WITH SCREWS PROVIDED.



DETAIL A-A



NOTE:
DOOR MFG. TO SUPPLY
APPROPRIATE SPACER
& BACK-UP PLATES



END VIEW - DOOR CLOSED

JED-201-S TYPE SERIES

DOOR FLUSH WITH FRAME HEADERS 4"		DOOR RECESSED 1/8" HEADERS 4" OR OVER			
OFFSET	A	B	C	E	F
90°	3 3/4	5 1/4	2 3/8	5/8	2
105°	4 1/2	5 1/4	3 3/8	5/8	2

FILE NO.	REVISE TABLE LOCATIONS	APPROVALS	DATE
10-947			
21-201-KITS			
DRG. USED 1			

DIMENSIONAL TOLERANCES UNLESS OTHERWISE SPECIFIED	APPROVALS	DATE
DECIMAL DIMENSIONS XX .010	CHECKED	
FRAC. DIMENSIONS XXX 1/32	DRAWN	6/7/97
MIXED	SCALE	NONE

INST ASSY	INSTALLATION GUIDE	SHEET 1 OF 1 SHEETS
21-201-KITS	20-330 CLOSER WITH 20-900 PING ON ALUM. HEADER WITH ALUM. DOOR ON OFFSET PIVOTS	DRWG. NO. 10-947
FINISH		REV. B
HEAT TREAT		



JACKSON CORPORATION
105 AMSTERDAM, CALIF. 90003