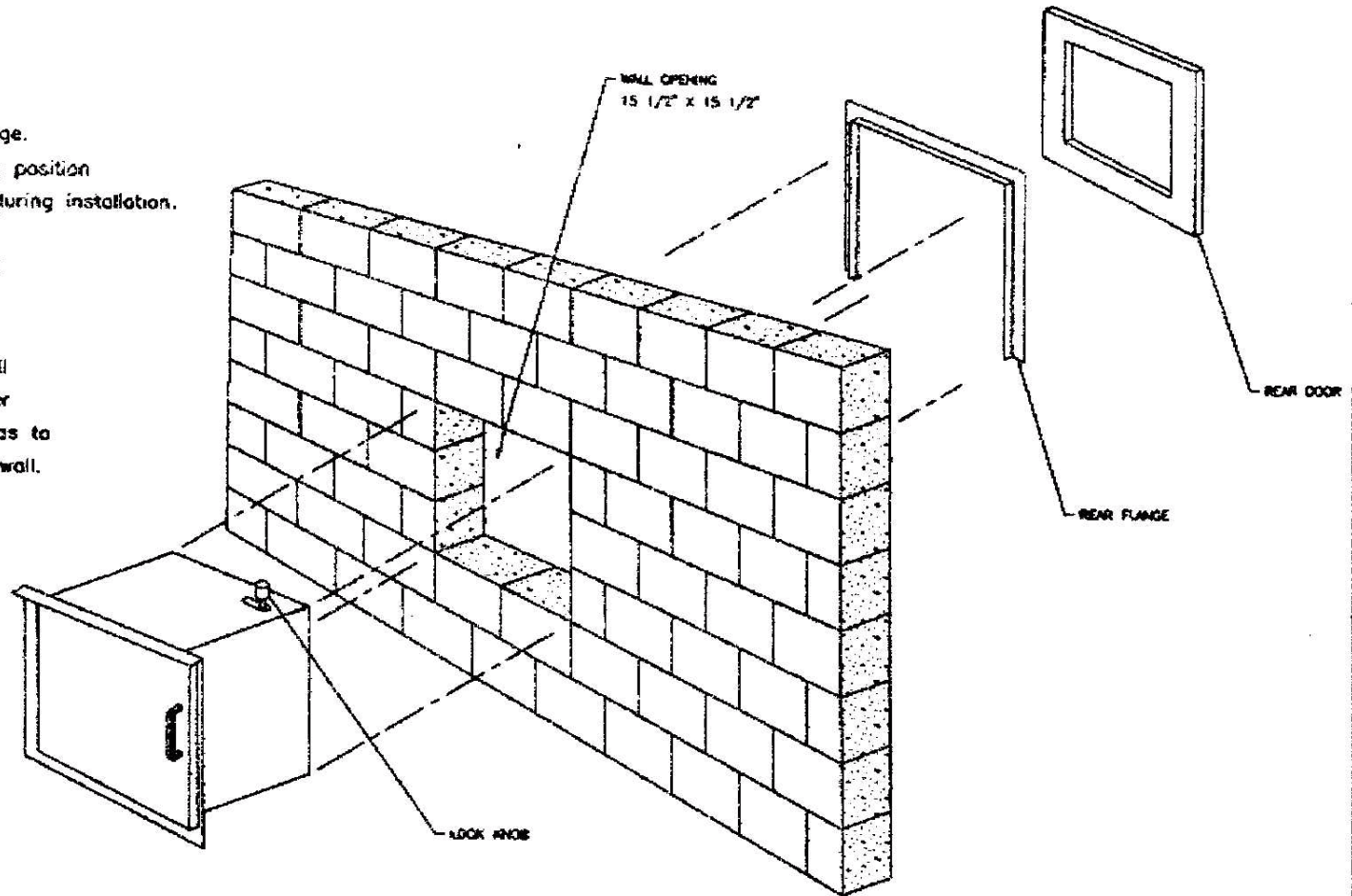


INSTALLATION OF PACKAGE RECEIVER

- 1) Remove door handles from inside of doors and reinstall to the front of the doors.
- 2) Remove rear door at hinge.
- 3) Remove rear adjustable flange. Tighten lock knob in locking position to keep front door closed during installation.
- 4) Set package receiver in wall opening.
- 5) With package receiver in wall slip rear flange over receiver box and attach to box so as to hold receiver box firmly in wall.
- 6) Reassemble rear door.



				C.R. Laurence Co., Inc 15000 S. FIGUEROA ST. GARDENA, CALIFORNIA 90247-7038 PHONE: (310)719-9770 FAX: (310)328-1321			
DESIGNED BY:		SCALE:		DATE:		PART NUMBER:	
R. Hernandez		N/A		11/31/95		PPR/SPR	
PART: PPR/SPR/SPRVP				PRODUCT: PACKAGE RECEIVER			
MATERIAL: INSTALLATION INSTRUCTIONS				DRAWING NUMBER: PPR/SPR			

THE CONTENTS AND THE DESIGN SHOWN THEREIN IS THE PROPERTY OF C.R. LAURENCE COMPANY, AND USE OR COPIES THEREOF WITHOUT WRITTEN CONSENT IS PROHIBITED.