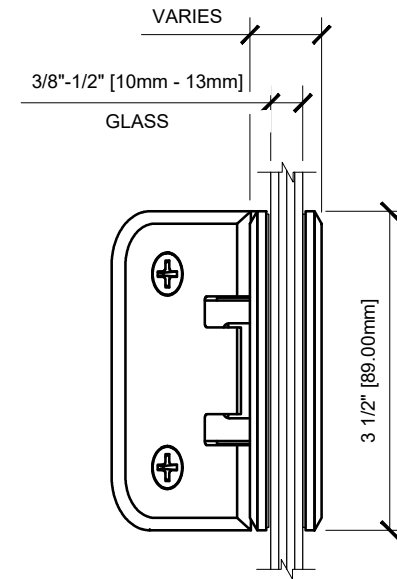
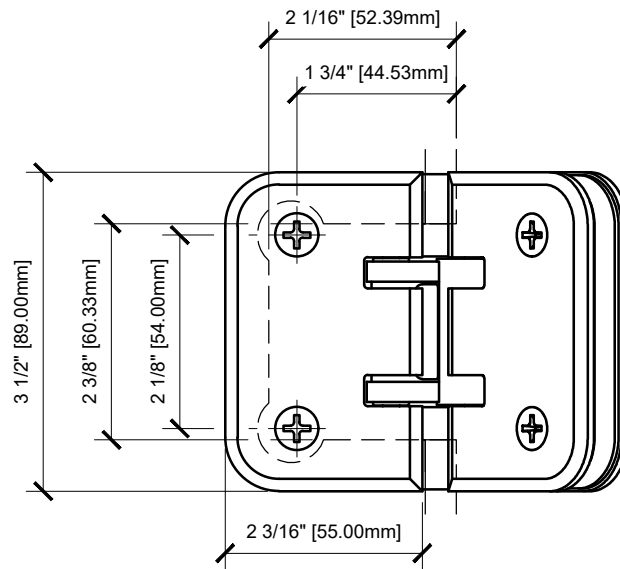
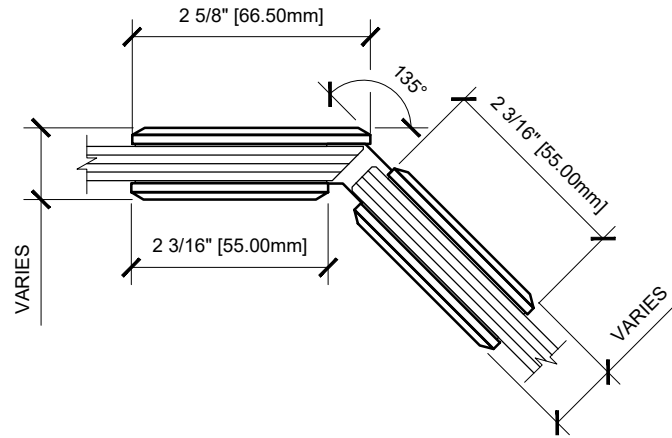


USE OF GASKETS	
FOR 3/8" (10mm) GLASS: USE ONE THICK GASKET ON EACH SIDE	
FOR 1/2" (12mm) GLASS: USE ONE THIN GASKET ON EACH SIDE	



CATALOG NUMBER	FINISH
EST135CH	CHROME
EST135BR	POLISHED BRASS
EST135BN	BRUSHED NICKEL
EST135GP	GOLD PLATED
EST135PN	POLISHED NICKEL
EST135SC	SATIN CHROME

EST135XX - CRL ESTATE SERIES 135 DEGREE GLASS TO GLASS HINGE

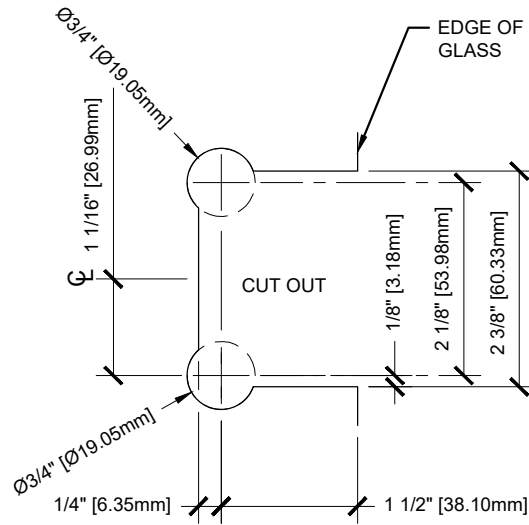
DATE:	1/07/19
SCALE:	6" = 1'-0"
DRAWN BY:	VM

DESCRIPTION: CRL - EST135  
 CRL - ELITE SERIES  
 135° GLASS TO GLASS HINGE

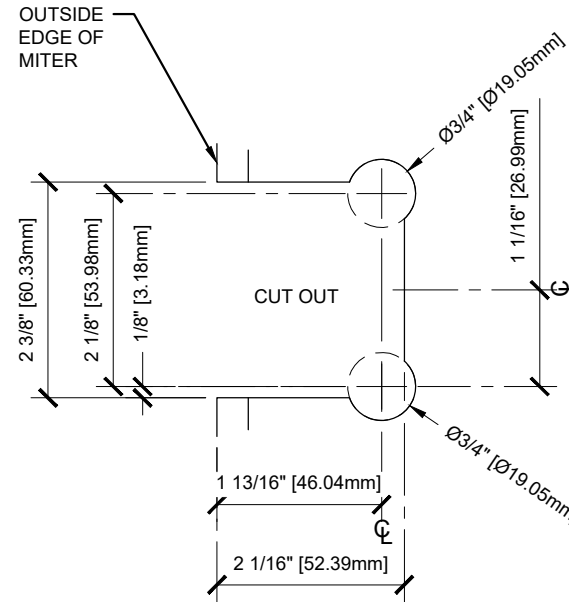
C.R. LAURENCE CO., ARCHITECTURAL PRODUCTS  
 2503 E. Vernon Avenue, Los Angeles, C.A 90058-1897  
 PH (800)-421-6144 FX: 800-587-7301 www.crlaurence.com



USE OF GASKETS	
FOR 3/8" (10mm) GLASS: USE ONE THICK GASKET ON EACH SIDE	
FOR 1/2" (12mm) GLASS: USE ONE THIN GASKET ON EACH SIDE	



GLASS FABRICATION DOOR TEMPLATE SQUARE CUT



GLASS FABRICATION 45° MITERED FIXED PANEL

CATALOG NUMBER	FINISH
EST135CH	CHROME
EST135BR	POLISHED BRASS
EST135BN	BRUSHED NICKEL
EST135GP	GOLD PLATED
EST135PN	POLISHED NICKEL
EST135SC	SATIN CHROME

EST135XX - CRL ESTATE 135 SERIES HINGE TEMPLATES

DATE: 1/07/19  
 SCALE: 6" = 1'-0"  
 DRAWN BY: VM

DESCRIPTION: CRL - EST135  
 CRL - ELITE SERIES  
 135° GLASS TO GLASS HINGE

C.R. LAURENCE CO. ARCHITECTURAL PRODUCTS  
 2503 E. Vernon Avenue, Los Angeles, C.A 90058-1897  
 PH (800)-421-6144 FX: 800-587-7301 www.crlaurence.com

