

**NFRC 102-2010 THERMAL PERFORMANCE  
TEST REPORT**

**Rendered to:**

**UNITED STATES ALUMINUM**

**SERIES/MODEL: 7400 PI**

**TYPE: Projecting (Awning)**

Summary of Results	
Standardized Thermal Transmittance (U-Factor)	
0.46	
Unit Size	23-5/8" x 59" (600 mm x 1499 mm) (Non-Standard Size)
Layer 1	1/4" AFG Comfort Ti-AC36 (e=0.034*, #2)
Gap	0.50" Gap, Super Spacer Standard (OF-S), 100% Air-Filled*
Layer 2	1/4" Clear

Reference must be made to Report No. A4476.01-301-46, dated 12/07/10 for complete test specimen description and data.



## **NFRC 102-2010 THERMAL PERFORMANCE TEST REPORT**

Rendered to:

UNITED STATES ALUMINUM  
200 Singleton Drive  
Waxahachie, Texas 75165

Report Number: A4476.01-301-46

Test Date: 11/26/10

Report Date: 12/07/10

Test Record Retention Date: 11/26/14

### **Test Sample Identification:**

**Series/Model:** 7400 PI

**Type:** Projecting (Awning)

**Overall Size:** 23-5/8" x 59" (600 mm x 1499 mm) (Non-Standard Size)

**NFRC Standard Size:** 59.1" x 23.6" (1500 mm wide x 600 mm high)

**Test Sample Submitted by:** Client

**Test Sample Submitted for:** Validation for Initial Certification (Production Line Unit)  
& Plant Qualification

**Test Procedure:** U-factor tests were performed in a Guarded Hot Box in accordance with NFRC 102-2010, *Procedure for Measuring the Steady-State Thermal Transmittance of Fenestration Systems*.

### **Test Results Summary:**

Standardized U-factor ( $U_{st}$ ): 0.46 Btu/hr·ft<sup>2</sup>·F CTS Method

**Test Sample Description:**

<b>CONSTRUCTION</b>	<b>Frame</b>	<b>Vent</b>
Size (in.) Non-Standard	23-5/8 x 59	19-3/4 x 55-1/8
Daylight Opening (in.)	N/A	16-1/2 x 52
<b>CORNERS</b>	Square Cut	Mitered
Fasteners	Screws	Corner Keys
Sealant	Yes	Yes
<b>MATERIAL</b>	AT (0.36")	AT (0.36")
Color Exterior	Gray	Gray
Finish Exterior	Anodized	Anodized
Color Interior	Gray	Gray
Finish Interior	Anodized	Anodized
<b>GLAZING METHOD</b>	N/A	Interior

**Glazing Information:**

<b>Layer 1</b>	1/4" AFG Comfort Ti-AC36 (e=0.034*, #2)
<b>Gap</b>	0.50" Gap, Super Spacer Standard (OF-S), 100% Air-Filled*
<b>Layer 2</b>	1/4" Clear
<b>Gas Fill Method</b>	N/A*

*\*Stated per Client/Manufacturer*

*N/A Non-Applicable*

*See Description Table Abbreviations*

**Test Sample Description: (Continued)**

<b>COMPONENTS</b>			
	<b>Type</b>	<b>Quantity</b>	<b>Location</b>
<b>WEATHERSTRIP</b>			
	Foam filled vinyl gasket	2 Rows	Vent perimeter.
<b>HARDWARE</b>			
	Lever lock	2	Top rail of the vent.
	Keeper	2	Head.
	Multi arm hinge	2	Jambs.
	Snubber	1	Bottom rail of the vent. Sill.
<b>DRAINAGE</b>			
	1" x 3/16" weephole	2	Sill.

## Thermal Transmittance (U-factor)

### Measured Test Data

#### Heat Flows

1. Total Measured Input into Metering Box ( $Q_{total}$ )	430.69 Btu/hr
2. Surround Panel Heat Flow ( $Q_{sp}$ )	78.61 Btu/hr
3. Surround Panel Thickness	4.00 inches
4. Surround Panel Conductance	0.0437 Btu/hr·ft <sup>2</sup> ·F
5. Metering Box Wall Heat Flow ( $Q_{mb}$ )	9.91 Btu/hr
6. EMF vs Heat Flow Equation (equivalent information)	0.0243*EMF + -1.349
7. Flanking Loss Heat Flow ( $Q_{fl}$ )	14.07 Btu/hr
8. Net Specimen Heat Loss ( $Q_s$ )	328.09 Btu/hr

#### Areas

1. Test Specimen Projected Area ( $A_s$ )	9.68 ft <sup>2</sup>
2. Test Specimen Interior Total (3-D) Surface Area ( $A_h$ )	10.44 ft <sup>2</sup>
3. Test Specimen Exterior Total (3-D) Surface Area ( $A_c$ )	9.47 ft <sup>2</sup>
4. Metering Box Opening Area ( $A_{mb}$ )	36.47 ft <sup>2</sup>
5. Metering Box Baffle Area ( $A_{bl}$ )	32.13 ft <sup>2</sup>
6. Surround Panel Interior Exposed Area ( $A_{sp}$ )	26.79 ft <sup>2</sup>

#### Test Conditions

1. Average Metering Room Air Temperature ( $t_h$ )	69.80 F
2. Average Cold Side Air Temperature ( $t_c$ )	-0.16 F
3. Average Guard/Environmental Air Temperature	72.01 F
4. Metering Room Average Relative Humidity	6.07 %
5. Metering Room Maximum Relative Humidity	6.43 %
6. Metering Room Minimum Relative Humidity	5.72 %
7. Measured Cold Side Wind Velocity (Perpendicular Flow)	15.09 mph
8. Measured Static Pressure Difference Across Test Specimen	0.00" ± 0.04"H <sub>2</sub> O

#### Results

1. Thermal Transmittance of Test Specimen ( $U_s$ )	0.48 Btu/hr·ft <sup>2</sup> ·F
2. Standardized Thermal Transmittance of Test Specimen ( $U_{st}$ )	0.46 Btu/hr·ft <sup>2</sup> ·F

## Thermal Transmittance (U-factor)

### Calculated Test Data

#### CTS Method

1. Warm Side Emittance of Glass ( $e_i$ )	0.84
2. Cold Side Emittance of Glass	0.84
3. Warm Side Frame Emittance	0.80
4. Cold Side Frame Emittance	0.80
5. Warm Side Sash/Panel/Vent Emittance	0.80
6. Cold Side Sash/Panel/Vent Emittance	0.80
7. Warm Side Baffle Emittance ( $e_{bi}$ )	0.92
8. Equivalent Warm Side Surface Temperature	47.01 F
9. Equivalent Cold Side Surface Temperature	6.51 F
10. Warm Side Baffle Surface Temperature	69.83 F
11. Measured Warm Side Surface Conductance ( $h_h$ )	1.49 Btu/hr·ft <sup>2</sup> ·F
12. Measured Cold Side Surface Conductance ( $h_c$ )	5.08 Btu/hr·ft <sup>2</sup> ·F
13. Test Specimen Thermal Conductance ( $C_s$ )	0.84 Btu/hr·ft <sup>2</sup> ·F
14. Convection Coefficient ( $K_c$ )	0.34 Btu/(hr·ft <sup>2</sup> ·F <sup>1.25</sup> )
15. Radiative Test Specimen Heat Flow ( $Q_{r1}$ )	164.75 Btu/hr
16. Conductive Test Specimen Heat Flow ( $Q_{c1}$ )	163.35 Btu/hr
17. Radiative Heat Flux of Test Specimen ( $q_{r1}$ )	17.02 Btu/hr·ft <sup>2</sup> ·F
18. Convective Heat Flux of Test Specimen ( $q_{c1}$ )	16.88 Btu/hr·ft <sup>2</sup> ·F
19. Standardized Warm Side Surface Conductance ( $h_{sth}$ )	1.24 Btu/hr·ft <sup>2</sup> ·F
20. Standardized Cold Side Surface Conductance ( $h_{stc}$ )	5.28 Btu/hr·ft <sup>2</sup> ·F
21. Standardized Thermal Transmittance ( $U_{st}$ )	0.46 Btu/hr·ft <sup>2</sup> ·F

#### Test Duration

1. The environmental systems were started at 16:14 hours, 11/25/10.
2. The test parameters were considered stable for two consecutive four hour test periods from 01:22 hours, 11/26/10 to 09:22 hours, 11/26/10.
3. The thermal performance test results were derived from 05:22 hours, 11/26/10 to 09:22 hours, 11/26/10.

The reported Standardized Thermal Transmittance ( $U_{st}$ ) was determined using CTS Method, per Section 8.2(A) of NFRC 102.

**Glazing Deflection (in):**

	Glazing
Edge Gap Width	0.50
Estimated center gap width upon receipt of specimen in laboratory (after stabilization)	0.48
Center gap width at laboratory ambient conditions on day of testing	0.48
Center gap width at test conditions	0.43

*Glass collapse determined using a digital glass and air space meter*

The sample was inspected for the formation of frost or condensation, which may influence the surface temperature measurements. The sample showed no evidence of condensation/frost at the conclusion of the test.

A full calibration of the Architectural Testing Inc. 'thermal test chamber' (ICN 004287) in Fresno, California was conducted in April 2010 in accordance with Architectural Testing Inc. calibration procedure. A calibration check was performed September 2010.

"This test method does not include procedures to determine the heat flow due to either air movement through the specimen or solar radiation effects. As a consequence, the thermal transmittance results obtained do not reflect performances which may be expected from field installations due to not accounting for solar radiation, air leakage effects, and the thermal bridge effects that may occur due to the specific design and construction of the fenestration system opening. Therefore, it should be recognized that the thermal transmittance results obtained from this test method are for ideal laboratory conditions and should only be used for fenestration product comparisons and as input to thermal performance analyses which also include solar, air leakage and thermal bridge effects."

"Ratings included in this report are for submittal to an NFRC-licensed IA for certification purposes and are not meant to be used for labeling purposes. Only those values identified on a valid Certification Authorization Report (CAR) are to be used for labeling purposes."

The test sample was installed in a vertical orientation, the exterior of the specimen was exposed to the cold side. The direction of heat transfer was from the interior (warm side) to the exterior (cold side) of the specimen.

ANSI/NCSL Z540-2-1997 type B uncertainty for this test was 2.98%.

Detailed drawings, data sheets, representative samples of test specimens, a copy of this report, or other pertinent project documentation will be retained by Architectural Testing, Inc. for a period of four years from the original test date. At the end of this retention period such materials shall be discarded without notice and the service life of this report by Architectural Testing will expire. Results obtained are tested values and were secured by using the designated test methods. This report does not constitute certification of this product nor an opinion or endorsement by this laboratory. Ratings included in this report are for submittal to an NFRC licensed IA for certification purposes and are not meant to be used for labeling purposes. Only those values identified on a valid Certification Authorization Report (CAR) are to be used for labeling purposes. It is the exclusive property of the client so named herein and relates only to the specimen(s) tested. This report may not be reproduced, except in full, without the written approval of Architectural Testing, Inc.

For ARCHITECTURAL TESTING, INC.

Tested By:



Digitally Signed by: William Smeds

Simon Smeds  
Technician

Reviewed By:



Digitally Signed by: Kenny C. White

Kenny C. White  
Laboratory Manager  
Individual-In-Responsible-Charge

WSS:ss

A4476.01-301-46

Attachments (pages): This report is complete only when all attachments listed are included.

- Appendix-A: Description Table Abbreviations (1)
- Appendix-B: CTS Calibration Data (1)
- Appendix-C: Surround Panel Wiring Diagram (1)
- Appendix-D: Baffle Wiring Diagram (1)
- Appendix-E: Submittal Form and Drawings (16)



### Revision Log

<b>Rev. #</b>	<b>Date</b>	<b>Page(s)</b>	<b>Revision(s)</b>
0	12/07/10	All	Original Report Issue. Work requested by Mr. Don Willard of United States Aluminum

## Appendix A: Description Table Abbreviations

CODE	Frame / Sash Types
AI	Aluminum w/ Vinyl Inserts (Caps)
AL	Aluminum
AP	Aluminum w/ Thermal Breaks - Partial
AS	Aluminum w/ Steel Reinforcement
AT	Aluminum w/ Thermal Breaks - All Members ( $\geq 0.21"$ )
AU	Aluminum Thermally Improved - All Members (0.062" - 0.209")
AV	Aluminum / Vinyl Composite
AW	Aluminum-clad Wood
FG	Fiberglass
PA	ABS Plastic w/ All Members Reinforced
PC	ABS Plastic-clad Aluminum
PF	ABS Plastic w/ Foam-filled Insulation
PH	ABS Plastic w/ Horizontal Members Reinforced
PI	ABS Plastic w/ Reinforcement - Interlock
PL	ABS Plastic
PP	ABS Plastic w/ Reinforcement - Partial
PV	ABS Plastic w/ Vertical Members Reinforced
PW	ABS Plastic-clad Wood
ST	Steel
VA	Vinyl w/ All Members Reinforced
VC	Vinyl-clad Aluminum
VF	Vinyl w/ Foam-filled Insulation
VH	Vinyl w/ Horizontal Members Reinforced
VI	Vinyl w/ Reinforcement - Interlock
VP	Vinyl w/ Reinforcement - Partial
VV	Vinyl w/ Vertical Members Reinforced
VW	Vinyl-clad Wood
VY	Vinyl
WA	Aluminum / Wood composite
WD	Wood
WV	Vinyl / Wood composite
WF	Fiberglass/Wood Combination
WC	Composite/Wood Composite (Shaped vinyl/wood composite members)
CW	Copper Clad Wood
CO	Vinyl/Wood Composite Material

CODE	Spacer Types (See sealant)
A1	Aluminum
A2	Aluminum (Thermally-broken)
A3	Aluminum-reinforced Polymer
A4	Aluminum / Wood
A5	Aluminum-reinforced Butyl (Swiggle)
A6	Aluminum / Foam / Aluminum
A7	Aluminum U-shaped
A8	Aluminum-Butyl (Corrugated) (Duraseal)
ER	EPDM Reinforced Butyl
FG	Fiberglass
GL	Glass
OF	Organic Foam
P1	Duralite
PU	Polyurethane Foam
SU	Stainless Steel, U-shaped
CU	Coated Steel, U-shaped (Intercept)
S2	Steel (Thermally-broken)
S3	Steel / Foam / Steel
S5	Steel-reinforced Butyl
S6	Steel U-channel w/ Thermal Cap
SS	Stainless Steel
CS	Coated Steel
TP	Thermo-plastic
WD	Wood
ZE	Elastomeric Silicone Foam
ZF	Silicone Foam
ZS	Silicone / Steel
N	Not Applicable
TS	Thermo-plastic w/ stainless steel substrate

CODE	Tint Codes
AZ	Azurlite
BL	Blue
BZ	Bronze
CL	Clear
EV	Evergreen
GD	Gold
GR	Green
GY	Gray
LE	Low 'e' Coating
OT	Other (use comment field)
RC	Solar or Reflective Coating
RG	Roller Shades between glazing
RS	Silver (reflective coating)
SF	Suspended Polyester Film
SR	Silver
BG	Blinds between the Glazing
DV	Dynamic Glazing-Variable
DY	Dynamic Glazing-NonVariable

CODE	Gap Fill Codes
AIR	Air
AR2	Argon/Krypton Mixture
AR3	Argon / Krypton / Air
ARG	Argon/Air
CO2	Carbon Dioxide
KRY	Krypton/Air
SF6	Sulfur Hexafluoride
XE2	Xenon/Krypton/Air
XE3	Xenon/Argon/Air
XEN	Xenon/Air
N	Not Applicable

DOOR DETAILS	
N	Not Applicable
CODE	Door Type
EM	Embossed
FL	Flush
LF	Full Lite
LH	1/2 - Lite
LQ	1/4 - Lite
LT	3/4 - Lite
RP	Raised Panel
CODE	Skin
AL	Aluminum
FG	Fiberglass
GS	Galvanized Steel
ST	Steel
WD	Wood
VY	Vinyl
CODE	Panel
FG	Fiberglass
PL	Plastic
WP	Wood - Plywood
WS	Wood - Solid
CODE	Sub-Structure
GS	Galvanized Steel
ST	Steel
WD	Wood
VY	Vinyl
CODE	Core Fill
CH	Cellular - Honeycomb
EP	Expanded Polystyrene
PI	Polyisocyanurate
PU	Polyurethane
WP	Wood - Plywood
WS	Wood - Solid
XP	Extruded Polystyrene

CODE	Spacer Sealant
D	Dual Seal Spacer System
S	Single Seal Spacer System

CODE	Grid Description
N	No Muntins
G	Grids between glass
S	Simulated Divided Lites
T	True Muntins

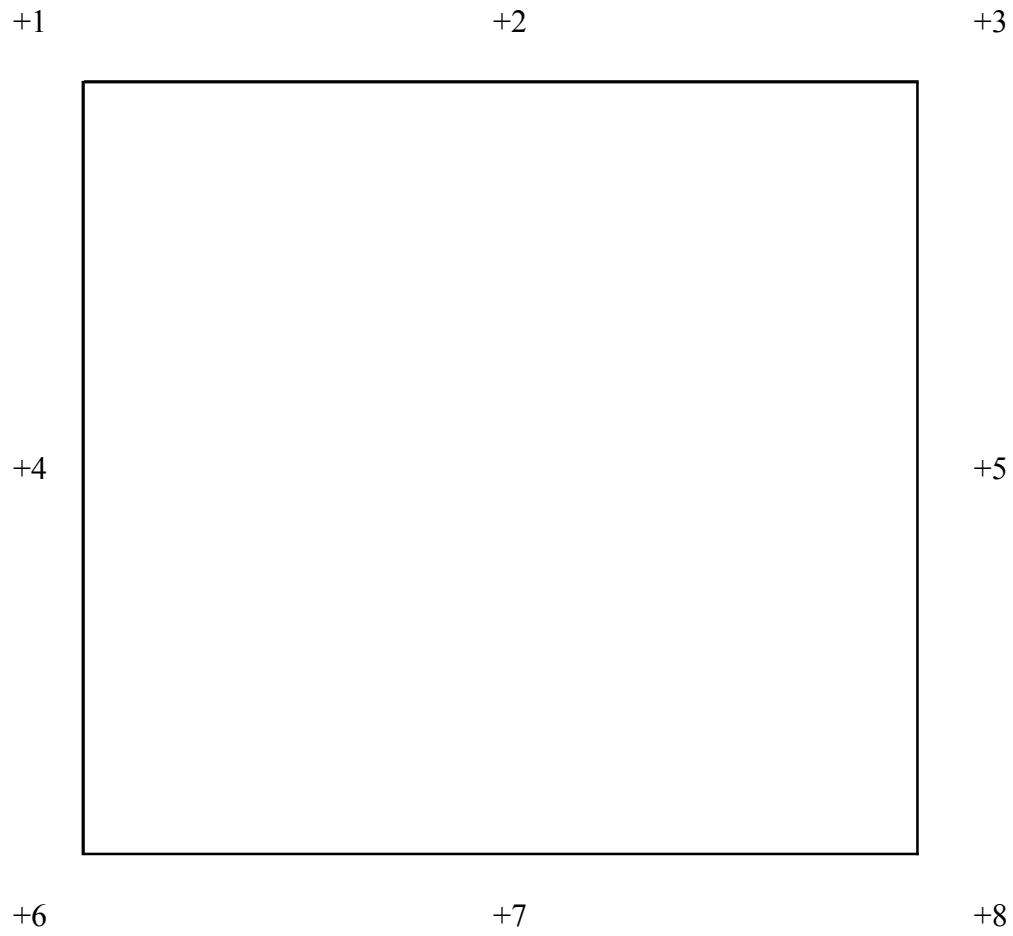
CODE	Grid Size Codes
	Blank for no grids
0.75	Grids < 1"
1.5	Grids $\geq 1"$

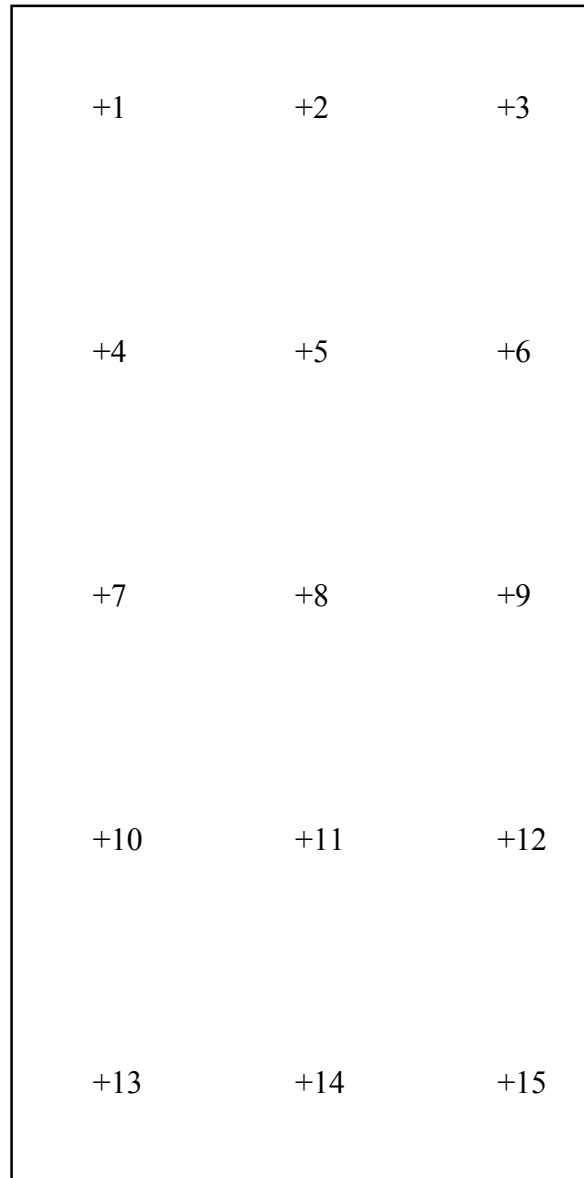
CODE	Thermal Breaks
F	Foam
U	Urethane
V	Vinyl
FB	Fiberglass
O	Other
AB	ABS
NE	Neoprene
AI	Air
N	Not Applicable
P	Polyamide

**Appendix B: CTS Calibration Data**

1. CTS Test Date	02/23/10
2. CTS Size	24.00 ft <sup>2</sup>
3. Glass Conductance	57.78 Btu/hr·ft <sup>2</sup> ·F
4. CTS Core Conductance	0.33 Btu/hr·ft <sup>2</sup> ·F
5. Warm Side Air Temperature	69.80 F
6. Cold Side Air Temperature	-0.33 F
7. Warm Side Average Surface Temperature	56.80 F
8. Cold Side Average Surface Temperature	3.41 F
9. Convection Coefficient (K <sub>c</sub> )	0.34 Btu/(hr·ft <sup>2</sup> ·F <sup>1.25</sup> )
10. Measured Cold Side Surface Conductance (h <sub>c</sub> )	5.08 Btu/hr·ft <sup>2</sup> ·F
11. Measured Thermal Transmittance	0.26 Btu/hr·ft <sup>2</sup> ·F

## Appendix C: Surround Panel Wiring Diagram



**Appendix D: Baffle Wiring Diagram**

## BILL OF MATERIALS

ITEM	U.E.C.	PART NO	DESCRIPTION	QTY	SUPPLIER	PART NO	COMMENT	UNITS
1	T-60923	WN 409	PROJECT-IN FRAME HEAD/STILL INSIDE	2	INEX-TX			LBS
2	T-60922	WN 407	PROJECT-IN FRAME HEAD/STILL OUTSIDE	2	INEX-TX			LBS
3	T-60925	WN 410	PROJECT-IN FRAME JAMB INSIDE	2	INEX-TX			LBS
4	T-60924	WN 409	PROJECT-IN FRAME JAMB OUTSIDE	2	INEX-TX			LBS
5	<del>T-60924</del>	<del>WN 409</del>	14 6 mm THERMOBAR	8		2280		LBS

6	T-60927	WN 412	PROJECT-IN INSIDE SASH	4	INEX-TX			LBS
7	T-60926	WN 411	PROJECT-IN OUTSIDE SASH	4	INEX-TX			LBS
8	T-60929	WN 423	ONE INCH GLASS STOP	4	INEX-TX			LBS
9	T-60972	CC245	CORNER ANGLE FOR INSIDE SASH	4	INEX-TX			LBS
10	T-60972	CC245	CORNER ANGLE FOR OUTSIDE SASH	4	INEX-TX			LBS
11	<del>T-60972</del>	<del>CC245</del>	14 6 mm THERMOBAR	8		2280		LBS

12	<del>ST252</del>	<del>#10 AB X 1" PH PAN HD SMS S.C.</del>	8				FRAME SCREW	PCS
----	------------------	---	---	--	--	--	-------------	-----

13	<del>GL1416</del>	<del>1" GLASS</del>	1					SQ. FT.
14	<del>GL1416</del>	<del>1/8" X 1/2" PRESIM TAP</del>	A/R					FT.
15	<del>GL1416</del>	<del>SILICONE GAP BEAD</del>	A/R		TREMO	SPEC 11		FT.
16	<del>SB 252</del>	<del>SETTING BLOCK 6.250 X 1" X 4"</del>	2					FT.
17	<del>SB 252</del>	<del>SETTING BLOCK 6.250 X 1" X 4"</del>						FT.

18	<del>WH 244</del>	<del>MEDIE GASKET</del>	A/R					FT.
20	<del>WH342</del>	<del>BULB GASKET</del>	A/R		AME-BURY			FT.

VINYL  
AND  
GASKETS

**A** Anderson Window Inc.  
 10000 10th Ave S.E.  
 Kent, WA 98032

A 4 4 7 6

DEC 03 2010

Report #

Tech

Date

UNITED STATES ALUMINUM CORP.

BILL OF MATERIALS FOR  
PROJECT - IN WINDOWDATE  
05/09/207400-CO3D  
1 of 4

**BILL OF MATERIALS**

ITEM	I.E.C. PART NO.	PART NO.	DESCRIPTION	QTY.	SUPPLIER	PART NO.	COMMENTS	UNIT
21			LOCK ASSEMBLY	1	TRUTH HARDWARE			PCS.
			CAM HANDLE	1	TRUTH HARDWARE	27-19		PCS.
			CUSTODIAL LOCK	1	TRUTH HARDWARE	28-23		PCS.
		WH474	STRIKE	1				PCS.
			REG. N. 1/2" PH PLST HD STAINLESS STEEL DWS	2	TRUTH HARDWARE		FOR CAM HANDLE	PCS.
			REG. N. 1/2" PH PLST HD STAINLESS STEEL SHS	2	TRUTH HARDWARE		FOR STRIKE	PCS.
22								PCS.
								PCS.
								PCS.
								PCS.
								PCS.
								PCS.
23			4-BAR HINGES (SEE PARTS LIST FOR HINGE LENGTH AND PART NOS.)	2	INIX	4315		PCS.
		4315	SHIM 1/16" X 1/2" X 200	2				PCS.
			810 X 3/4" PH PAN HD TEK	4	TRUTH HARDWARE		FOR SHIM	PCS.
			810-24 X 1/4" MS	14	TRUTH HARDWARE		FOR HINGES	PCS.

**A** **ALUMINUM** **UNITED STATES ALUMINUM CORP.**

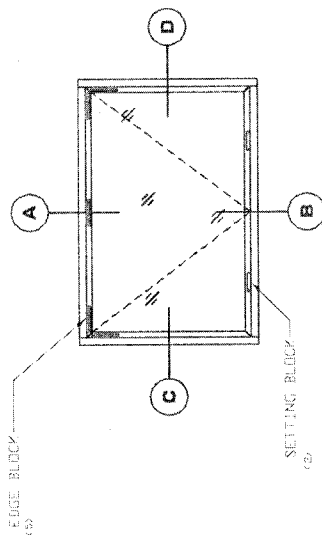
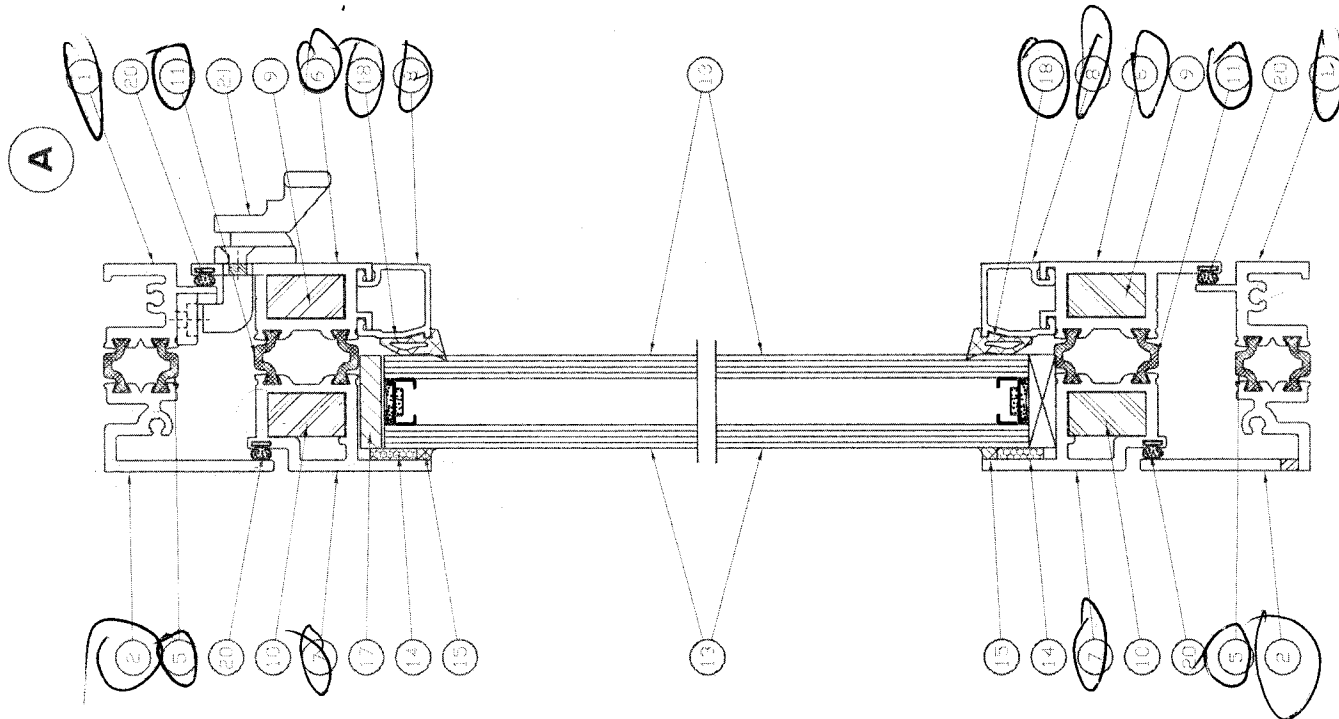
**A 4 4 7 6** **DEC 03 2010**

**Report #** **Date**

**4-BAR HINGE CHARTS**

HINGE LENGTH	STAINLESS STEEL PART NO.
10"	
12"	
14"	
16"	
18"	
20"	
24"	
28"	

UNITED STATES ALUMINUM CORP.	
REVISID AS NOTED REVISID AS NOTED REVISID AS NOTED	35 25 10 100 100 100 100 100 100 100 100 100
BILL OF MATERIALS FOR PROJECT-IN WINDOW	
7400-0000	
2 of 4	



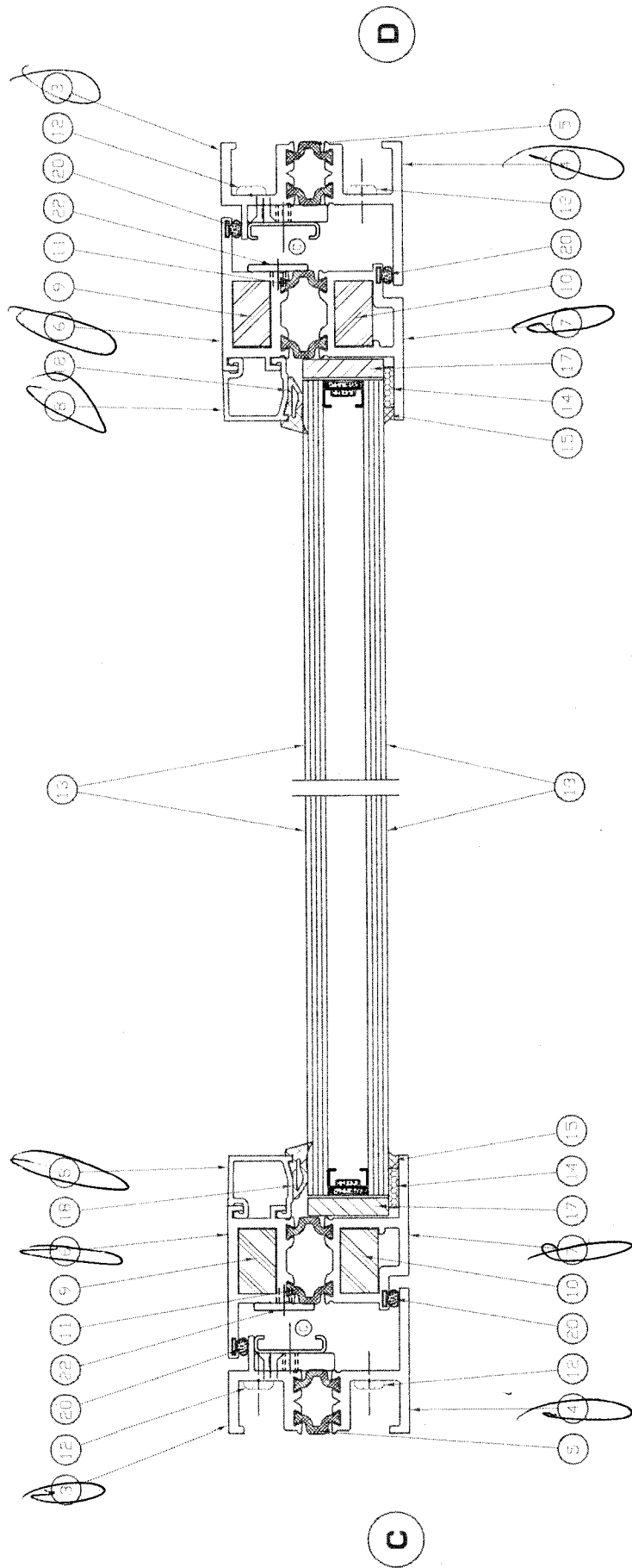
**A** Architectural Testing, Inc.  
Test sample per applicable code frame details  
Generate the test report

**A 4 4 7 6** **DEC 03 2010**

**Report #** Test 225 **Date** \_\_\_\_\_

UNITED STATES ALUMINUM CORP.			
①	REVISED AS NOTED	06/02/09	REV
②	REVISION	10/24/09	REV
③	REVISION	05/09/02	REV
④	REVISED AS NOTED	02/19/02	REV
PROJECT - IN WINDOW LAYOUT			7400-003D
FULL SIZE			3 of 4





**A** Architectural Products, Inc.  
The world's most innovative window solutions  
Commercial and Residential

A 4 4 7 6 DEC 03 2010

Report # Tech                      Date                     

UNITED STATES ALUMINUM CORP.			
①	REVISED AS NOTED	BY 07/13/09	09/13/09
②	REVISED AS NOTED	BY 07/13/09	09/13/09
③	REVISED AS NOTED	BY 07/13/09	09/13/09
④	REVISED AS NOTED	BY 07/13/09	09/13/09
PROJECT-IN WINDOW LAYOUT		WILLIAM C	05/04/02
FULL SIZE		7400-003D	4 of 4