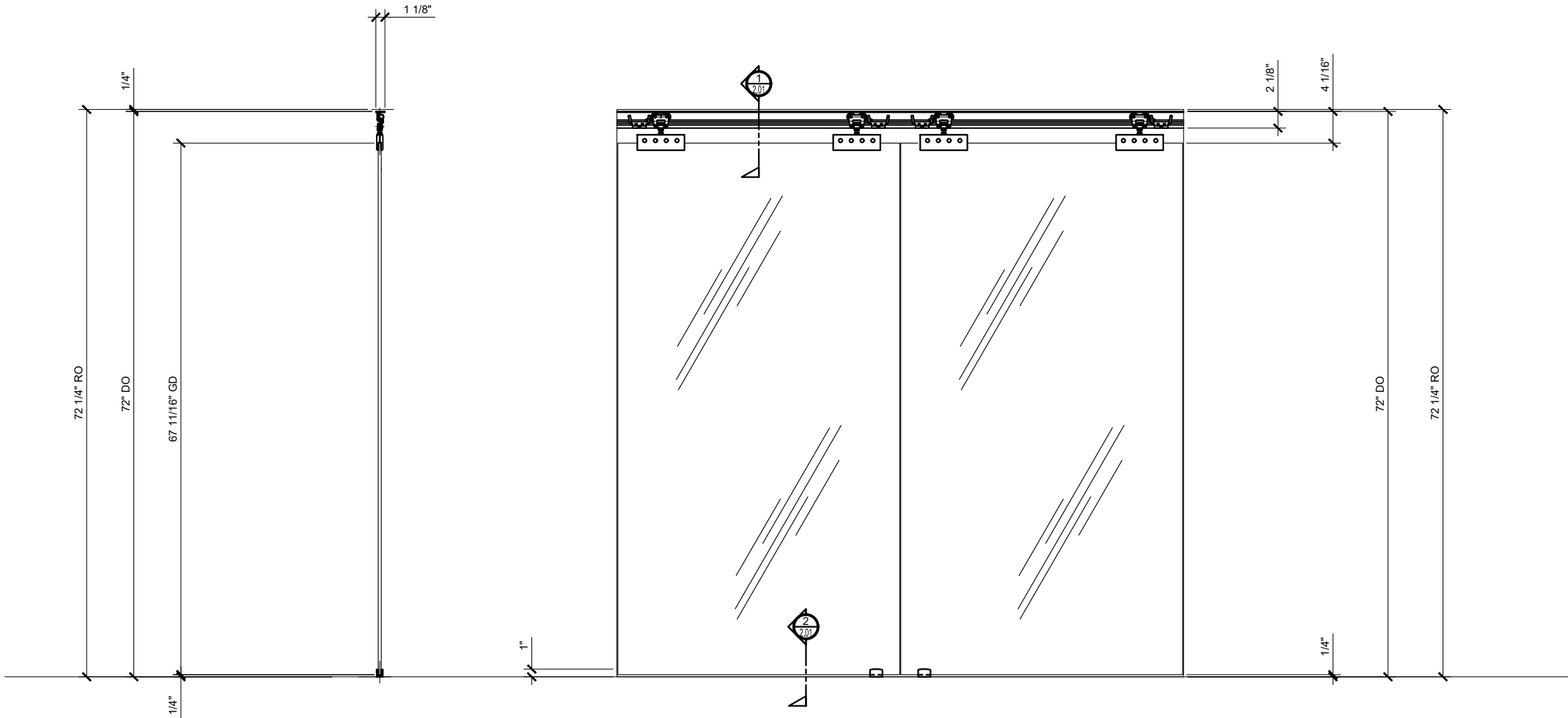


CRL EZ - SLIDE 80 SERIES TOP HUNG SINGLE TRACK SLIDING DOOR

- * 5/16" TO 3/8" (8 TO 10MM) TEMPERED GLASS
- * NO NOTCHES OR HOLES NEEDED IN THE GLASS FOR INSTALLATION
- * RATED FOR PANELS WEIGHING UP TO 176 POUNDS (80 KG)
- * OPTIONAL BREAK METAL COVERS, MODEL THC1 ARE AVAILABLE ON SPECIAL ORDER TO HELP CONCEAL THE OPERATING HARDWARE.

NOTE: THE EZ-SLIDE SYSTEM IS NOT DESIGNED FOR USE IN SHOWER OR STEAM ROOM APPLICATIONS AND SHOULD NOT BE USED WITH LAMINATED GLASS.



① ELEVATION AND SECTION
ARCH REF: NONE 1-1/2\"=1'-0"

STRUCTURAL DISCLAIMER:
ALL CUSTOMERS WHO IN ANY WAY UTILIZE THIS PRODUCT ARE SOLELY RESPONSIBLE TO CONSULT A STRUCTURAL ENGINEER TO DETERMINE THE SUITABILITY OF THE PRODUCT FOR THE INTENDED USE AND SITE CONDITIONS. ALL INSTALLERS MUST BE QUALIFIED AND HAVE PROFESSIONAL KNOWLEDGE ABOUT COMPLIANCE WITH LOCAL, STATE AND FEDERAL REGULATIONS, SAFETY FACTORS, AND THE APPROPRIATE CHOICE OF FIXING MATERIAL AND PROCEDURES.

STANDARD ABBREVIATIONS	
RO	ROUGH OPENING
FD	FRAME DIMENSION
DLO	DAYLIGHT OPENING
DO	DOOR OPENING
DD	DOOR DIMENSION
GD	GLASS DIMENSION
DP	DIMENSION POINT

Revisions By:

CRL

ALUMINUM

A CRL COMPANY

2503 E. Vernon Avenue, Los Angeles, C.A 90058-1897
PH (800)-421-6144 FX 800-587-7501 www.crlaluminum.com

Description:

CRL EZ - SLIDE 80 SERIES
TOP HUNG SINGLE TRACK
SLIDING DOOR
FOR 5/16" AND 3/8" GLASS

Drawn By

TM

Date:

02/28/19

Scale:

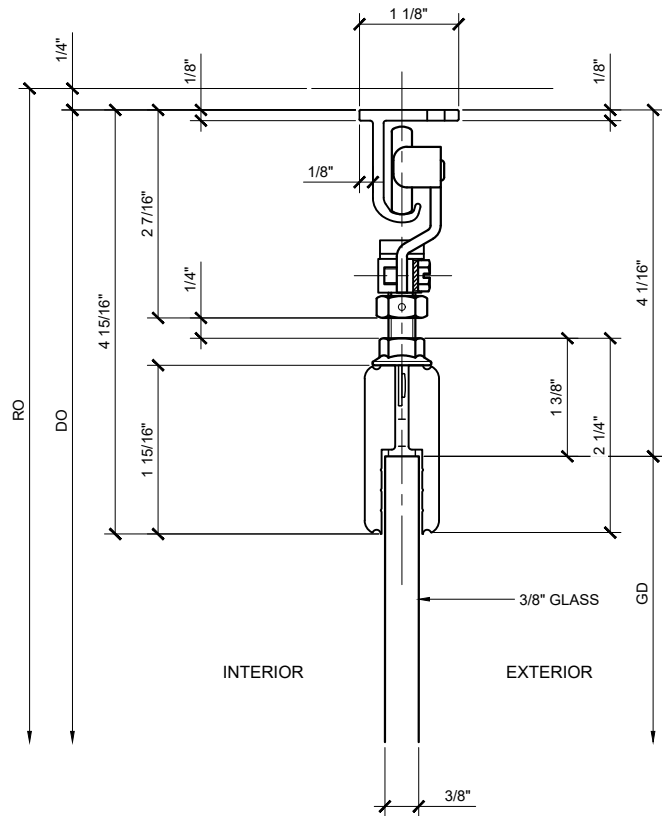
AS NOTED

File Name:

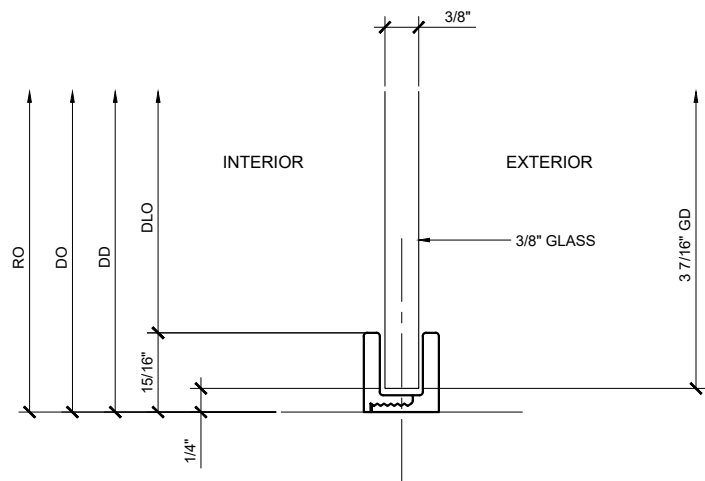
EZ_Slide_80_Top_Hg_Sngl_Track.dwg

Sheet

1.01




① SECTION DETAIL AT HEAD
 ARCH REF: NONE 1'-0"=1'-0"



② SECTION DETAIL AT SILL
 ARCH REF: NONE 1'-0"=1'-0"

CRL EZ SLIDE 80 SERIES TOP HUNG SINGLE TRACK SLIDING DOOR

Revisions By:	
 <p>A CRH COMPANY 2503 E. Vernon Avenue, Los Angeles, C.A 90058-1887 PH (800)-421-6144 FX 800-587-7501 www.crlaurence.com</p>	
Description: CRL EZ – SLIDE 80 SERIES TOP HUNG SINGLE TRACK SLIDING DOOR FOR 5/16" AND 3/8" GLASS	
Drawn By: JGM Date: 02/28/19 Scale: AS NOTED File Name: EZ_Slide_80_Top_Hg_Sngl_Track.dwg	
	Sheet <div>2.01</div>