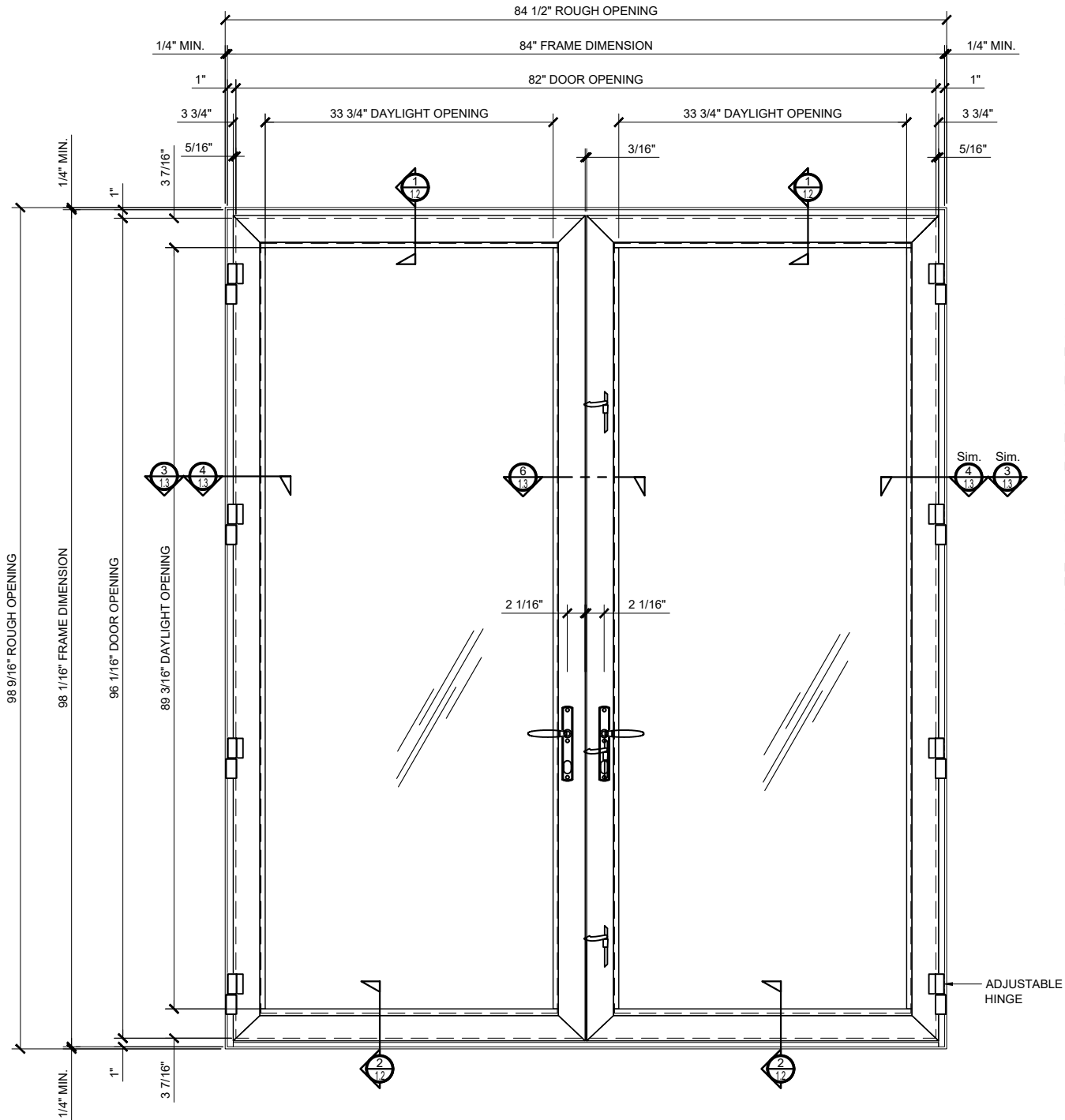
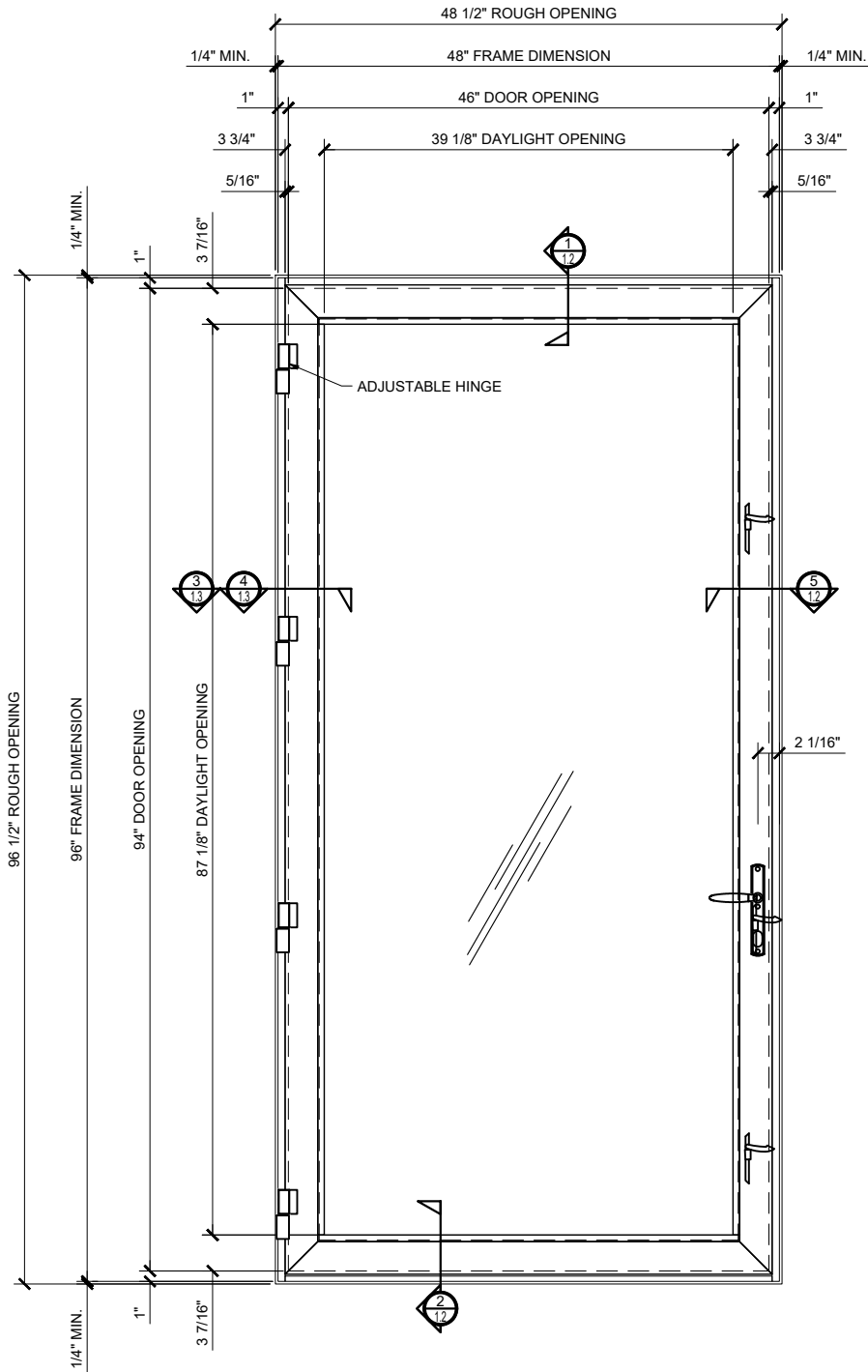




TERRACE DOORS - SERIES 900

**STRUCTURAL DISCLAIMER:**  
ALL CUSTOMERS WHO IN ANY WAY UTILIZE THIS PRODUCT ARE SOLELY RESPONSIBLE TO CONSULT A STRUCTURAL ENGINEER TO DETERMINE THE SUITABILITY OF THE PRODUCT FOR THE INTENDED USE AND SITE CONDITIONS. ALL INSTALLERS MUST BE QUALIFIED AND HAVE PROFESSIONAL KNOWLEDGE ABOUT COMPLIANCE WITH LOCAL, STATE AND FEDERAL REGULATIONS, SAFETY FACTORS, AND THE APPROPRIATE CHOICE OF FIXING MATERIAL AND PROCEDURES.



THE SERIES 900 IS A HIGH PERFORMANCE TERRACE DOOR FOR USE IN CONDOMINIUMS, LOFTS, HOTELS, AND HIGH-RISE APARTMENTS WITH ALL THE BENEFITS YOU ARE LOOKING FOR IN A FRENCH DOOR LOOK. THE SERIES 900 TERRACE DOOR WILL WITHSTAND HEAVY TRAFFIC AND THE WORSE OF WEATHER CONDITIONS WHILE MAINTAINING ITS ELEGANT STYLING. THE 2-1/4" (57.2) THICK DOOR WITH A 1" X 4-1/2" (25 X 114.3) FRAME FEATURES DOUBLE POLYAMIDE GLASS STRIPS PROVIDING SUPERIOR INTERIOR TO EXTERIOR THERMAL SEPARATION. FOR MAXIMUM SECURITY, THE SERIES 900 TERRACE DOOR INCLUDES FIVE-POINT LOCKING DEVICE FOR SINGLES, AND SEVEN- POINT DEVICE FOR PAIRS, THREE EACH, FIVE KNUCKLES ADJUSTABLE HINGES WITH NON- REMOVABLE STAINLESS STEEL PINS PER LEAF COMPLETE THE STURDY LOOK AND FEEL OF THE SERIES 900 TERRACE DOOR.

- FINISH:
- \*CLEAR ANODIC COATING
  - \*DARK BRONZE ANODIC COATING
  - \*BLACK ANODIC COATING
  - \*CUSTOM PAINT

4 HINGE FOR 8'  
3 HINGES UNDER 8'

ADJUSTABLE HINGE

① CRL - US ALUMINUM TERRACE DOOR - SERIES 900 - OUT-SWING

1 1/2"=1'-0"

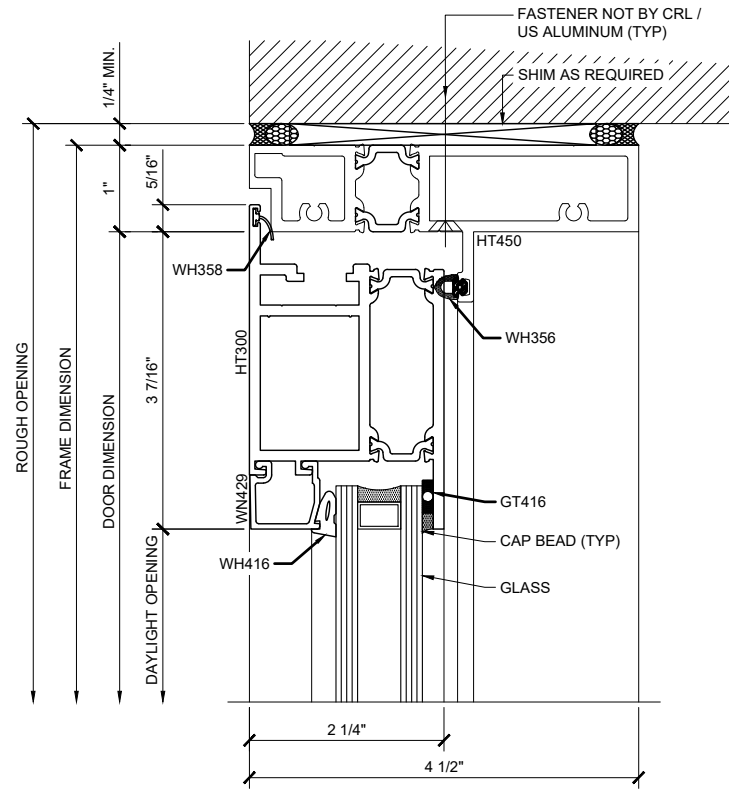
Revisions By:  
TGM 5/17/18

CRL ALUMINUM  
C.R. LAURENCE CO. ARCHITECTURAL PRODUCTS  
2503 E. Vernon Avenue, Los Angeles, CA 90058-1897  
PH: (800)-421-6144 FX: (800)-867-7501 www.crlaurence.com

Description:  
U.S. ALUMINUM  
ENTRANCE  
TERRACE DOORS  
SERIES 900

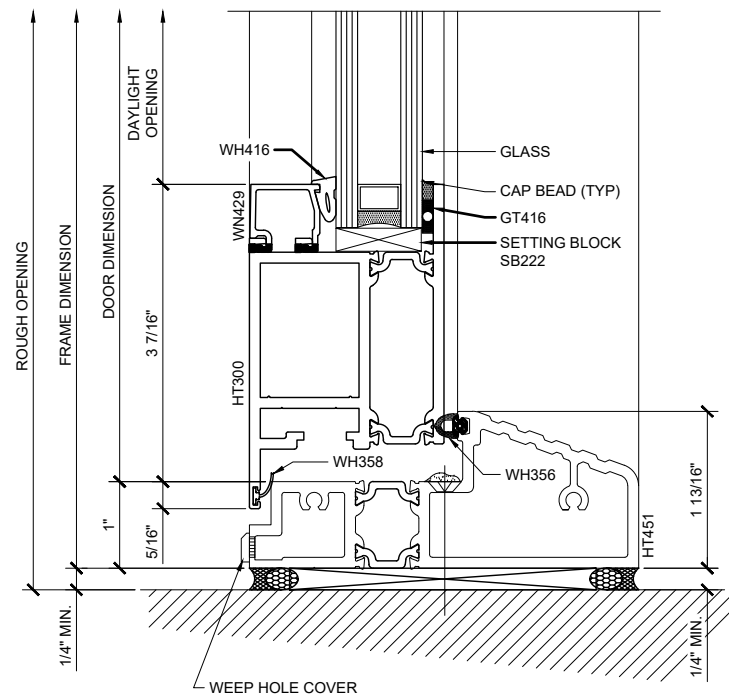
Drawn By: RP  
Date: 5/12/17  
Scale: AS NOTED  
File Name: CRL US ENTRANCE  
- TERRACE DOORS - SERIES 900.dwg

Sheet  
1.1



① OUT-SWING DOOR @ HEAD

1'-0"=1'-0"



② OUT-SWING DOOR @ SILL

1'-0"=1'-0"

## CRL-US ALUMINUM - TERRACE DOOR - SERIES 900 - OUT-SWING DETAILS

Revisions By:

TGM 5/17/18

**CRL**  
**US ALUMINUM**  
C.R. LAURENCE CO. ARCHITECTURAL PRODUCTS  
2503 E. Vernon Avenue, Los Angeles, CA 90058-1897  
PH: (800)-421-6144 FX: 800-587-7501 www.crlaurence.com

Description:  
U.S. ALUMINUM  
ENTRANCE  
TERRACE DOORS  
SERIES 900

Drawn By: RP

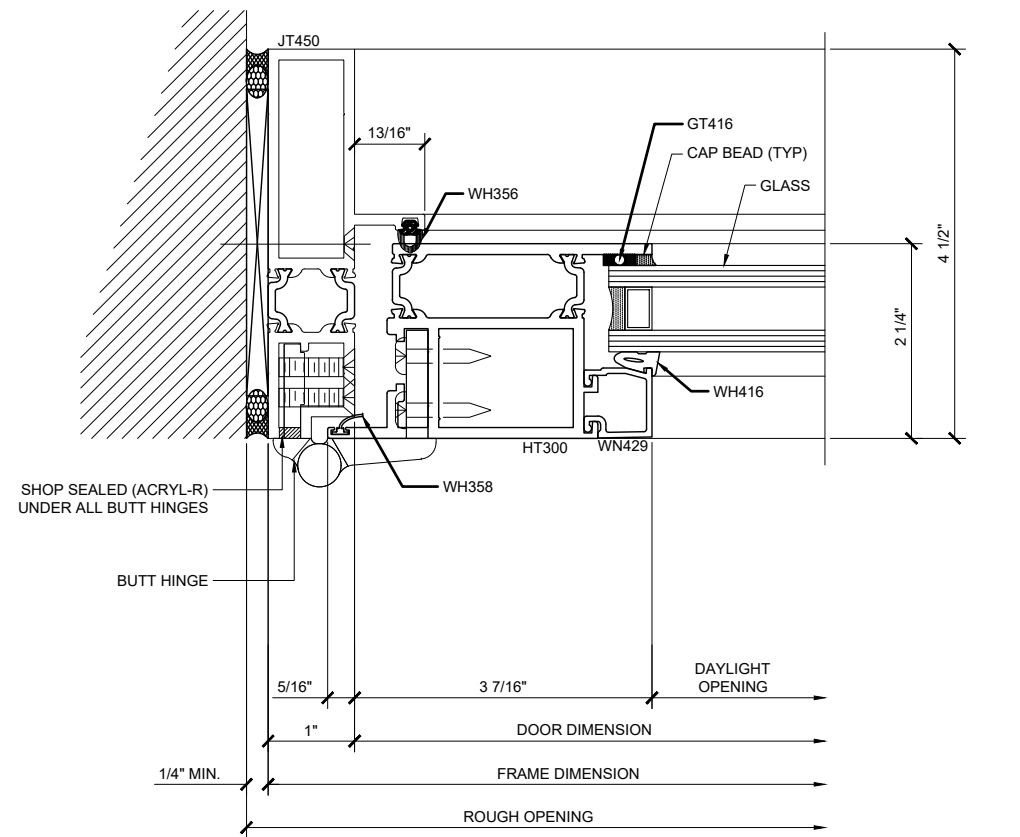
Date: 5/12/17

Scale: AS NOTED

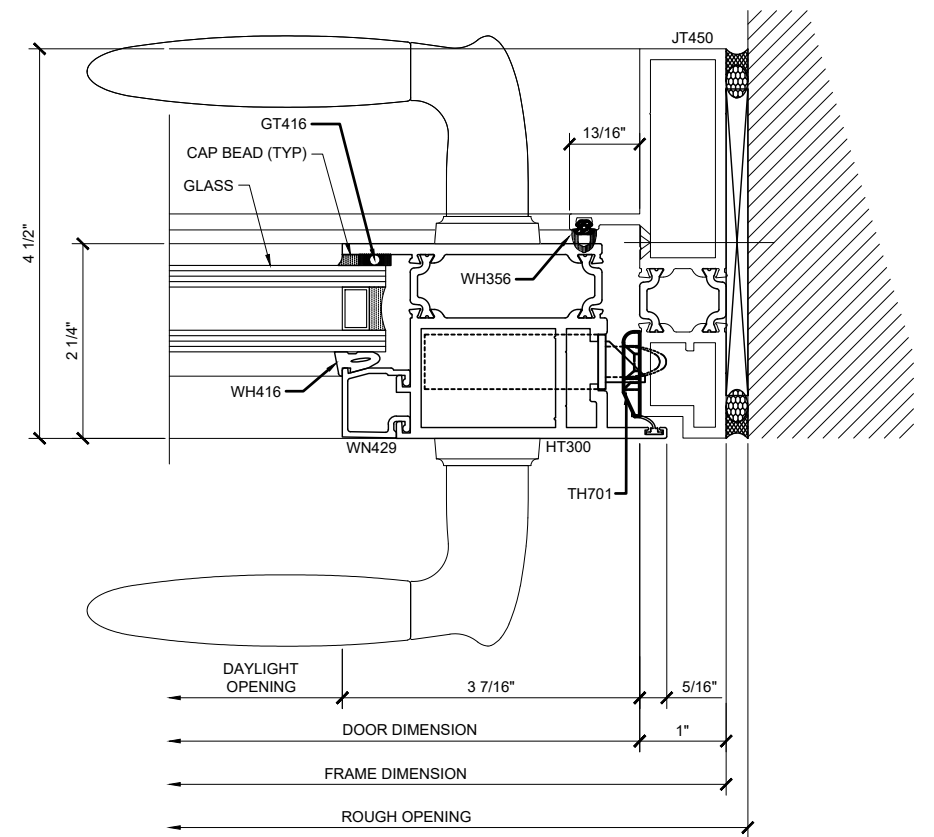
File Name: CRL US ENTRANCE  
- TERRACE DOORS - SERIES 900.dwg

Sheet

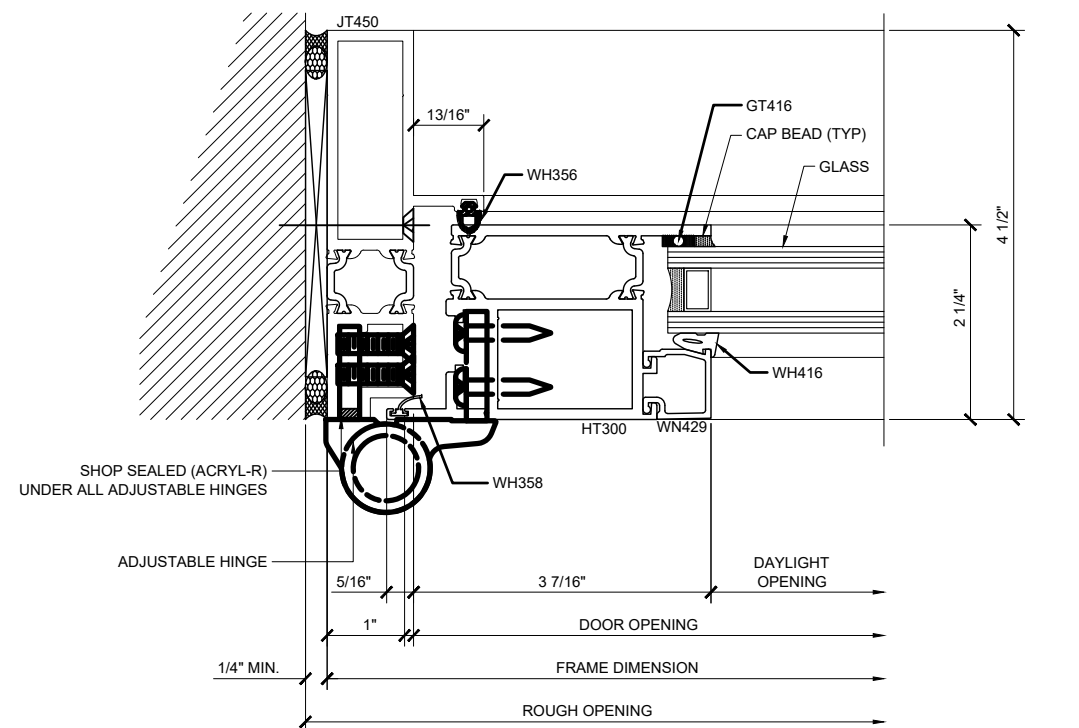
1.2



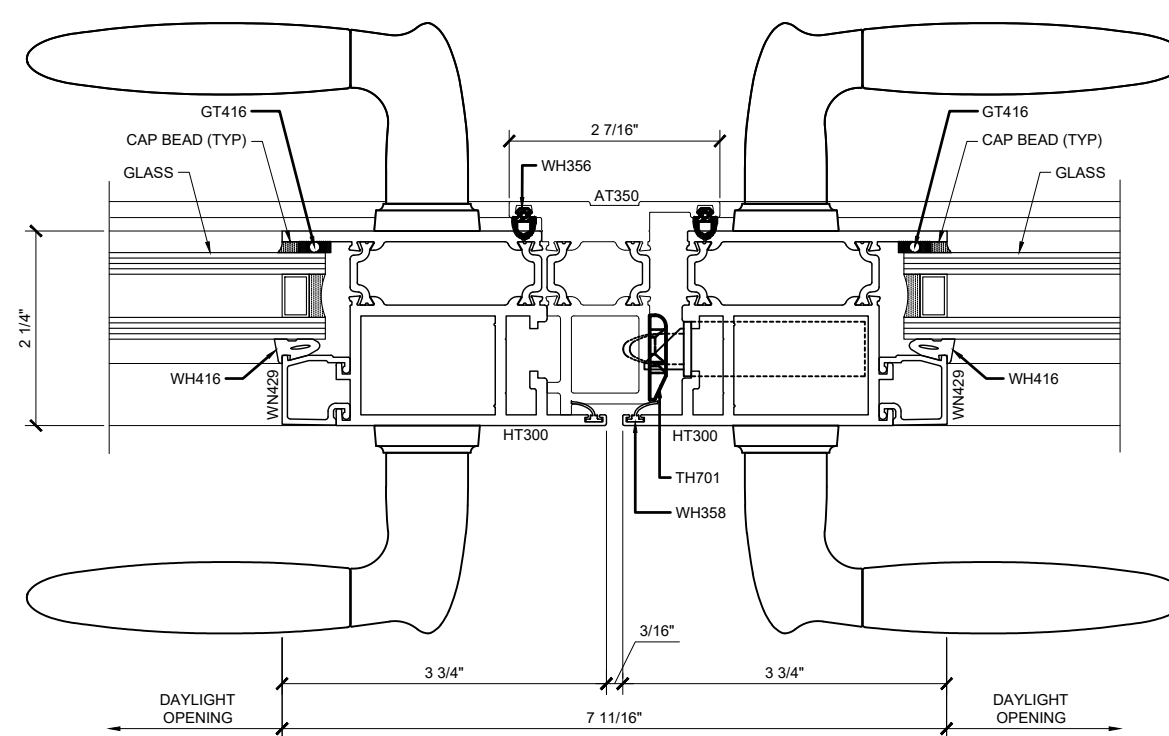
③ OUT-SWING DOOR @ JAMB WITH STANDARD 5 KNUCKLE HINGE  
1'-0"=1'-0"



⑤ OUT-SWING DOOR @ JAMB  
1'-0"=1'-0"



④ OUT-SWING DOOR @ JAMB WITH OPTIONAL ADJUSTABLE HINGE  
1'-0"=1'-0"



⑥ OUT-SWING DOOR @ STILE  
1'-0"=1'-0"

## CRL-US ALUMINUM - TERRACE DOOR - SERIES 900 - OUT-SWING DETAILS

Revisions By:	
TGM	5/17/18

**CRL**  
**ALUMINUM**  
C.R. LAURENCE CO. ARCHITECTURAL PRODUCTS  
2503 E. Vernon Avenue, Los Angeles, CA 90058-1897  
PH: (800) 421-6144 FX: (800) 587-7501 www.crlaurence.com

Description:  
U.S. ALUMINUM  
ENTRANCE  
TERRACE DOORS  
SERIES 900

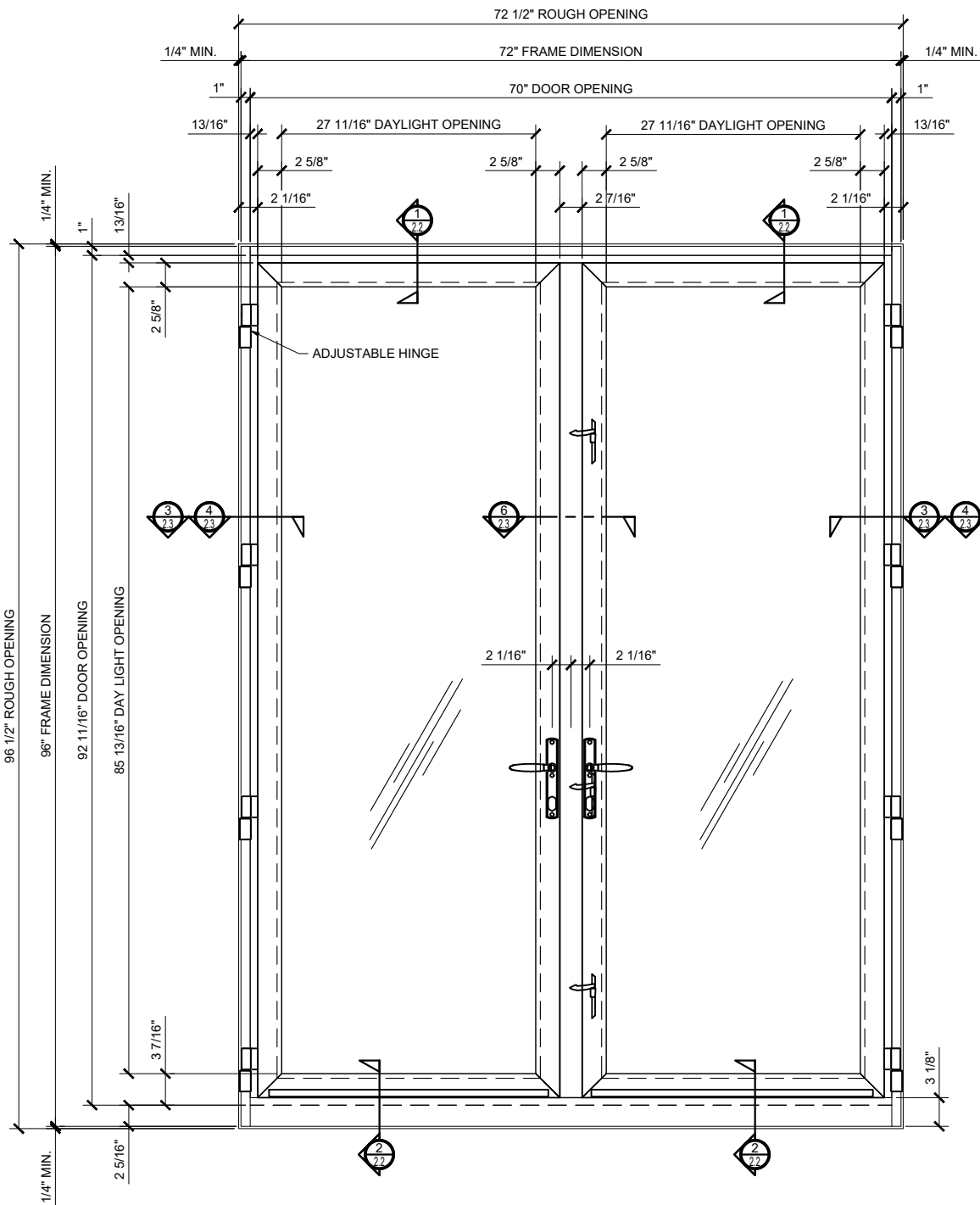
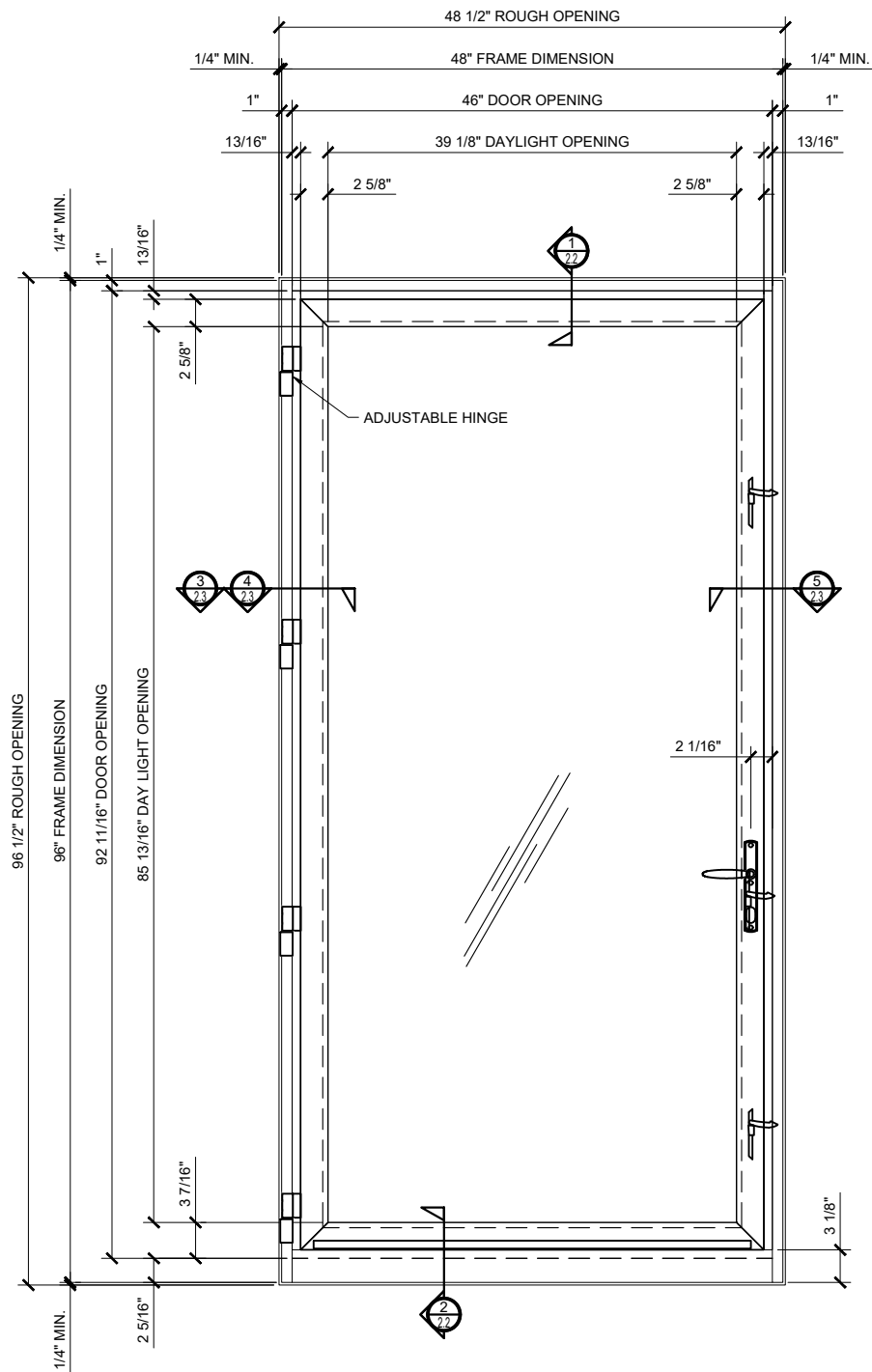
Drawn By: RP  
Date: 5/12/17  
Scale: AS NOTED  
File Name: CRL US ENTRANCE  
- TERRACE DOORS - SERIES 900.dwg

Sheet

1.3



TERRACE DOORS - SERIES 900



THE SERIES 900 IS A HIGH PERFORMANCE TERRACE DOOR FOR USE IN CONDOMINIUMS, LOFTS, HOTELS, AND HIGH-RISE APARTMENTS WITH ALL THE BENEFITS YOU ARE LOOKING FOR IN A FRENCH DOOR LOOK. THE SERIES 900 TERRACE DOOR WILL WITHSTAND HEAVY TRAFFIC AND THE WORSE OF WEATHER CONDITIONS WHILE MAINTAINING ITS ELEGANT STYLING. THE 2-1/4" (57.2) THICK DOOR WITH A 1" X 4-1/2" (25 X 114.3) FRAME FEATURES DOUBLE POLYAMIDE GLASS STRIPS PROVIDING SUPERIOR INTERIOR TO EXTERIOR THERMAL SEPARATION. FOR MAXIMUM SECURITY, THE SERIES 900 TERRACE DOOR INCLUDES FIVE-POINT LOCKING DEVICE FOR SINGLES, AND SEVEN- POINT DEVICE FOR PAIRS, THREE EACH, FIVE KNUCKLES ADJUSTABLE HINGES WITH NON- REMOVABLE STAINLESS STEEL PINS PER LEAF COMPLETE THE STURDY LOOK AND FEEL OF THE SERIES 900 TERRACE DOOR.

FINISH:  
\*CLEAR ANODIC COATING  
\*DARK BRONZE ANODIC COATING  
\*BLACK ANODIC COATING  
\*CUSTOM PAINT

4 HINGES FOR 8'  
3 HINGES UNDER 7'

① CRL - US ALUMINUM TERRACE DOOR - SERIES 900 -IN-SWING

1 1/2"=1'-0"

Revisions By:	
TGM	5/17/18

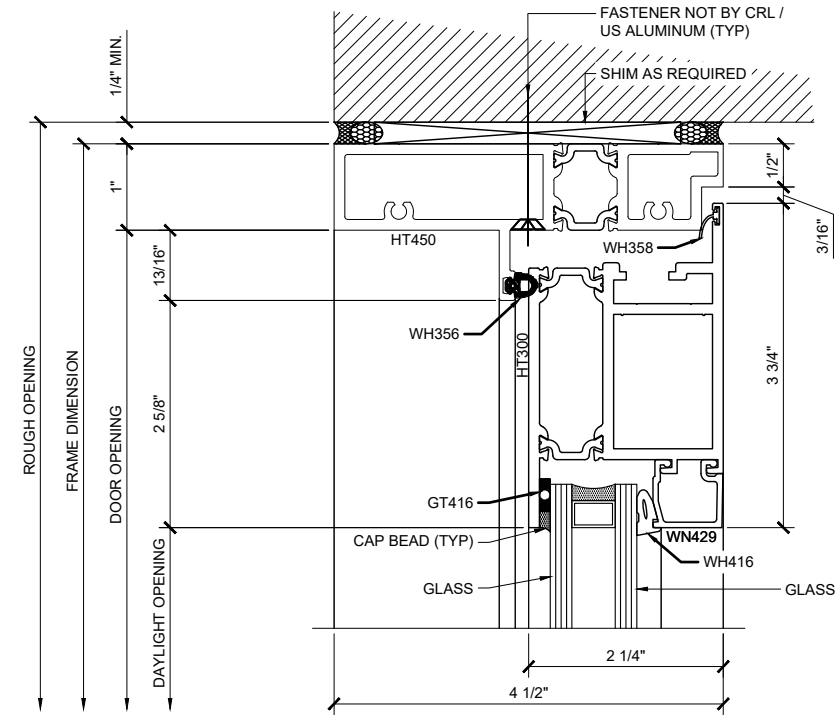


C.R. LAURENCE CO. ARCHITECTURAL PRODUCTS  
2503 E. Vernon Avenue, Los Angeles, CA 90058-1897  
PH: (800)-421-6144 FX: (800)-867-7501 www.crlaurence.com

Description:  
U.S. ALUMINUM  
ENTRANCE  
TERRACE DOORS  
SERIES 900

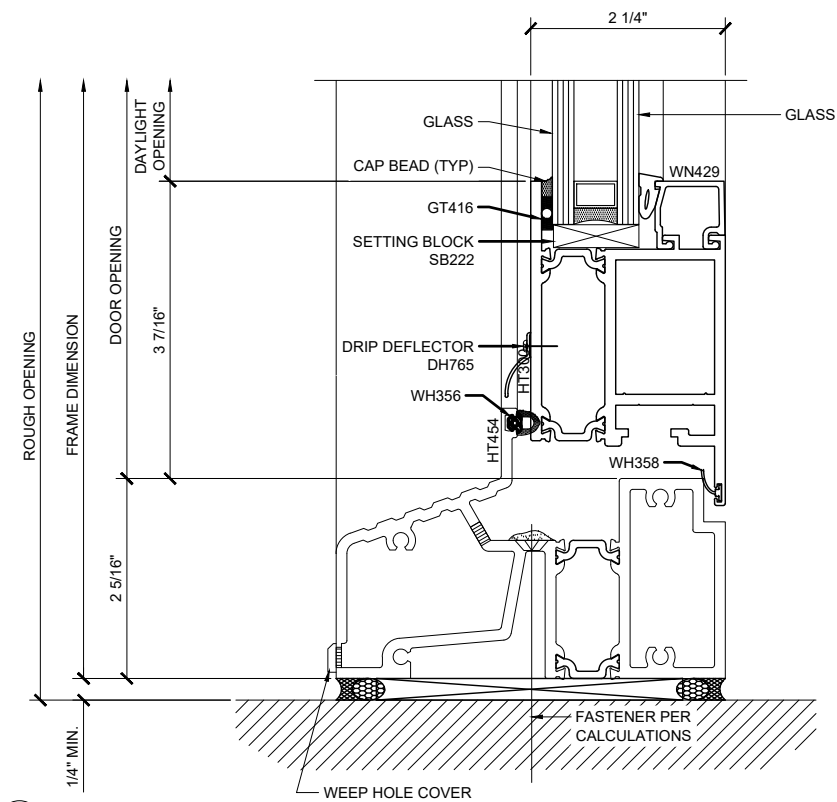
Drawn By:	RP
Date:	5/12/17
Scale:	AS NOTED
File Name: CRL US ENTRANCE - TERRACE DOORS - SERIES 900.dwg	

Sheet



① IN-SWING DOOR @ HEAD

1'-0"=1'-0"



② IN-SWING DOOR @ SILL

1'-0"=1'-0"

## CRL-US ALUMINUM - TERRACE DOOR - SERIES 900 - IN-SWING DETAILS

Revisions By:

TGM 5/17/18

**CRL**  
**US ALUMINUM**  
C.R. LAURENCE CO. ARCHITECTURAL PRODUCTS  
2503 E. Vernon Avenue, Los Angeles, CA 90058-1897  
PH: (800)-421-6144 FX: 800-587-7501 www.crlaurence.com

Description:  
U.S. ALUMINUM  
ENTRANCE  
TERRACE DOORS  
SERIES 900

Drawn By: RP

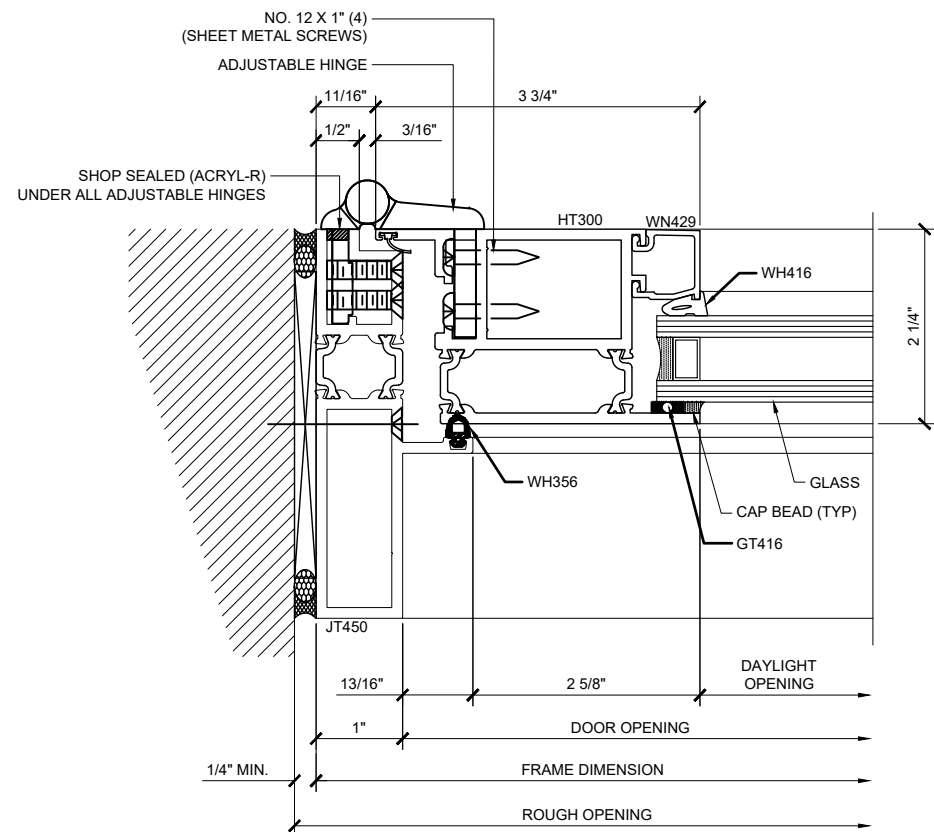
Date: 5/12/17

Scale: AS NOTED

File Name: CRL US ENTRANCE  
- TERRACE DOORS - SERIES 900.dwg

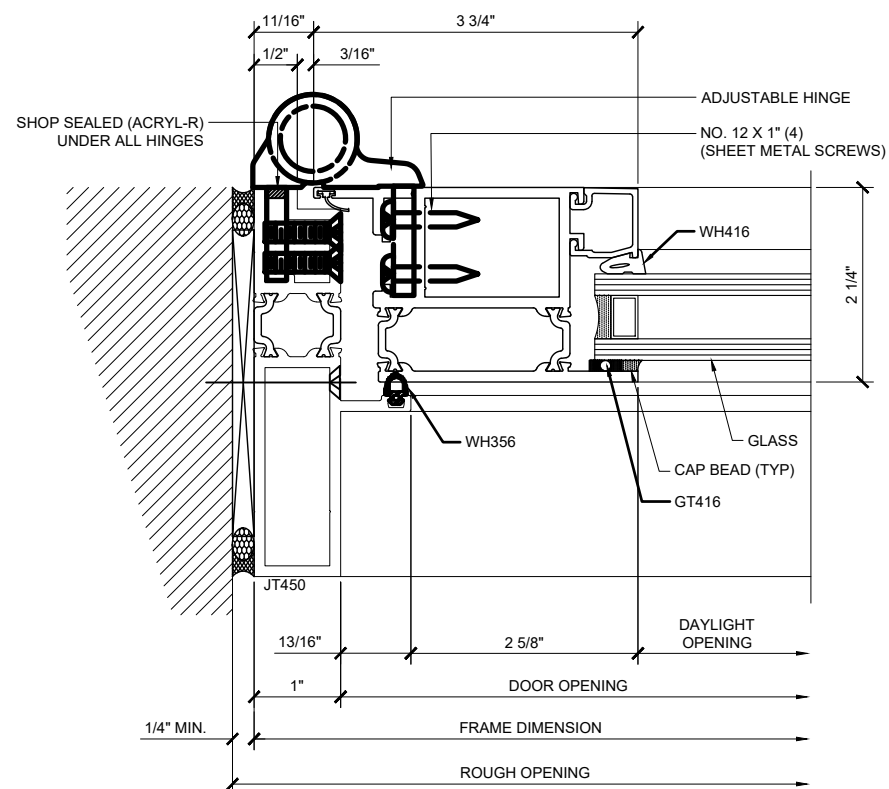
Sheet

2.2



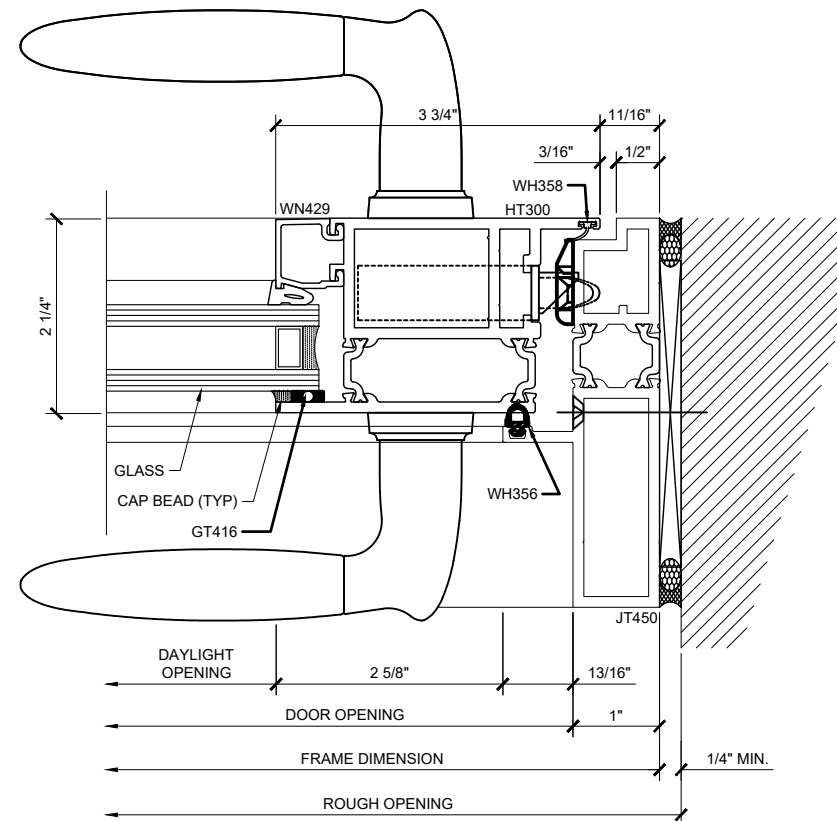
③ IN-SWING DOOR @ JAMB WITH STANDARD 5 KNUCKLE HINGE

1'-0"=1'-0"



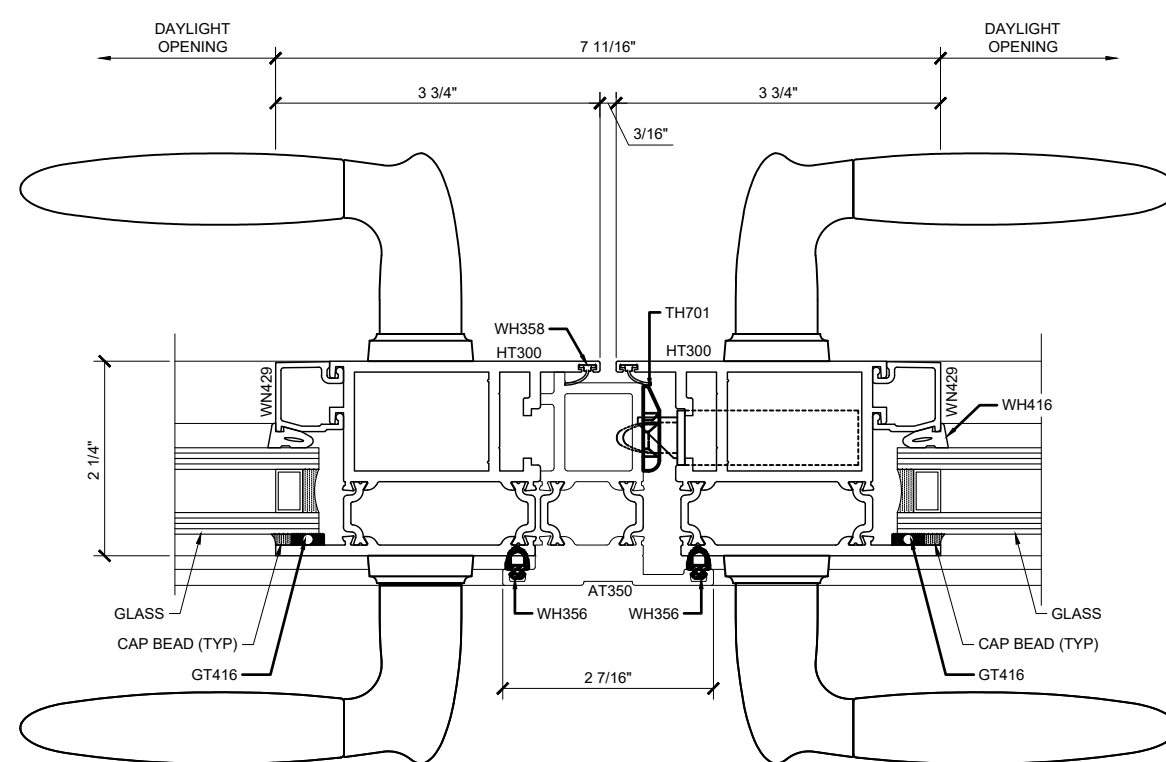
④ IN-SWING DOOR @ JAMB WITH OPTIONAL ADJUSTABLE HINGE

1'-0"=1'-0"



⑤ IN-SWING DOOR @ JAMB

1'-0"=1'-0"



⑥ IN-SWING DOOR @ STILE

1'-0"=1'-0"

## CRL-US ALUMINUM - TERRACE DOOR - SERIES 900 - IN-SWING DETAILS

Revisions By:  
TGM 5/17/18

**CRL**  
**U.S. ALUMINUM**  
C.R. LAURENCE CO. ARCHITECTURAL PRODUCTS  
2503 E. Vernon Avenue, Los Angeles, CA 90058-1897  
PH: (800)-421-6144 FX: (800)-867-7501 www.crlaurence.com

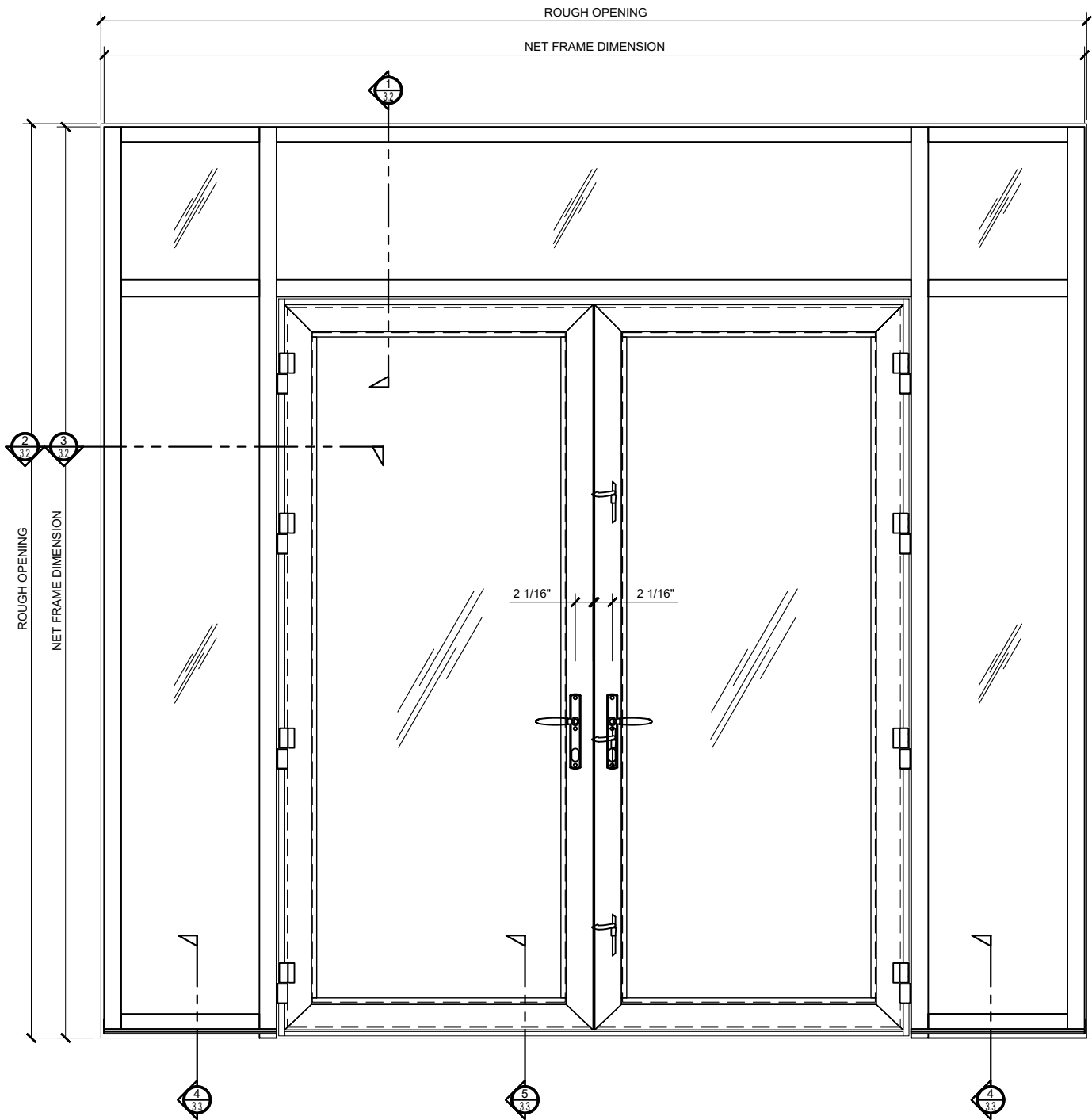
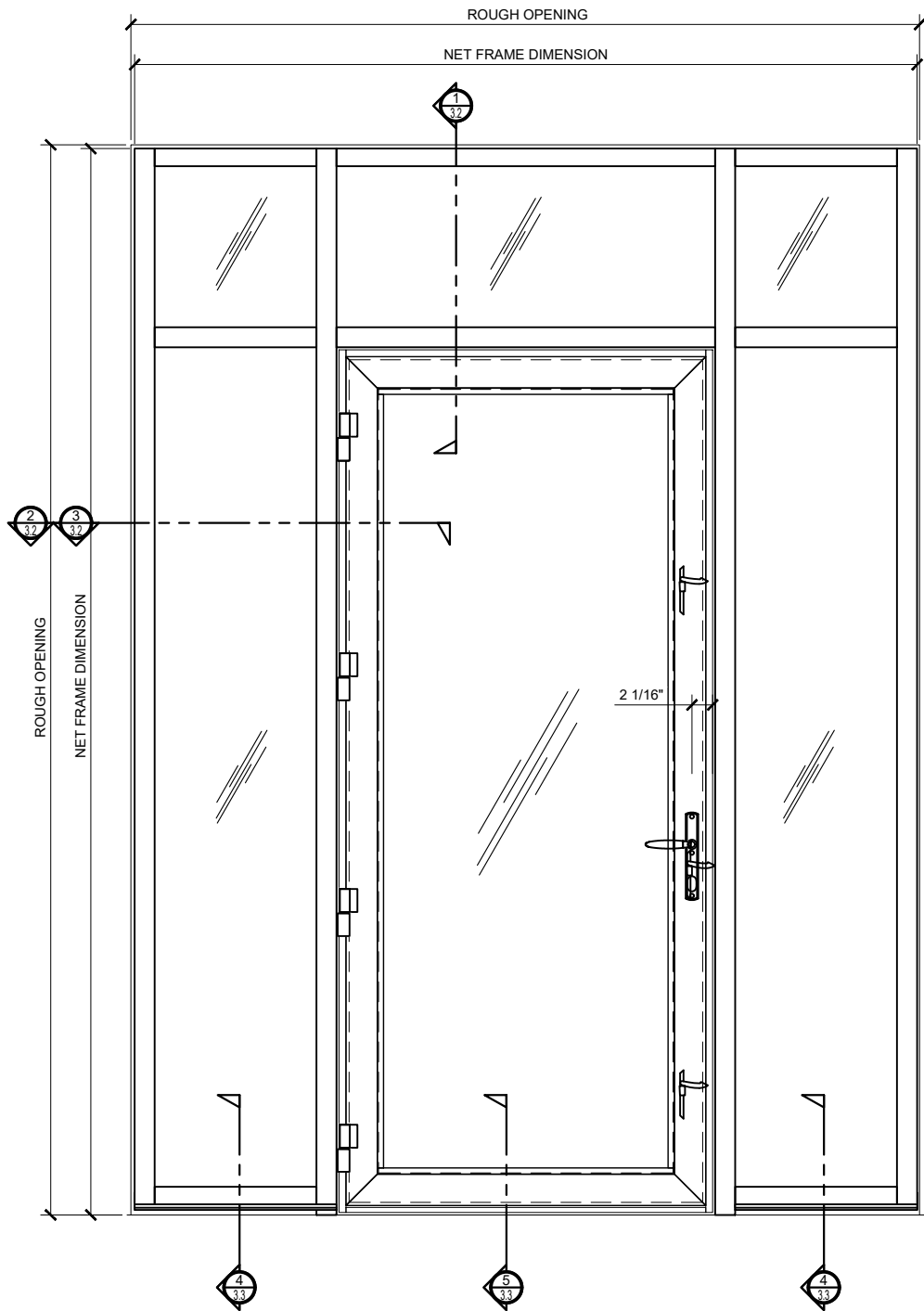
Description:  
U.S. ALUMINUM  
ENTRANCE  
TERRACE DOORS  
SERIES 900

Drawn By: RP  
Date: 5/12/17  
Scale: AS NOTED  
File Name: CRL US ENTRANCE  
- TERRACE DOORS - SERIES 900.dwg

Sheet  
2.3



TERRACE DOORS - SERIES 900



① CRL-US ALUMINUM TERRACE DOOR - SERIES 900 - OUT SWING  
DOOR SHOWN IN SERIES FT451 CENTER GLAZE STOREFRONT - 3250, FT601, FT451, TT601 OR TT451

1 1/2"=1'-0"

Revisions By:	
TGM	5/17/18

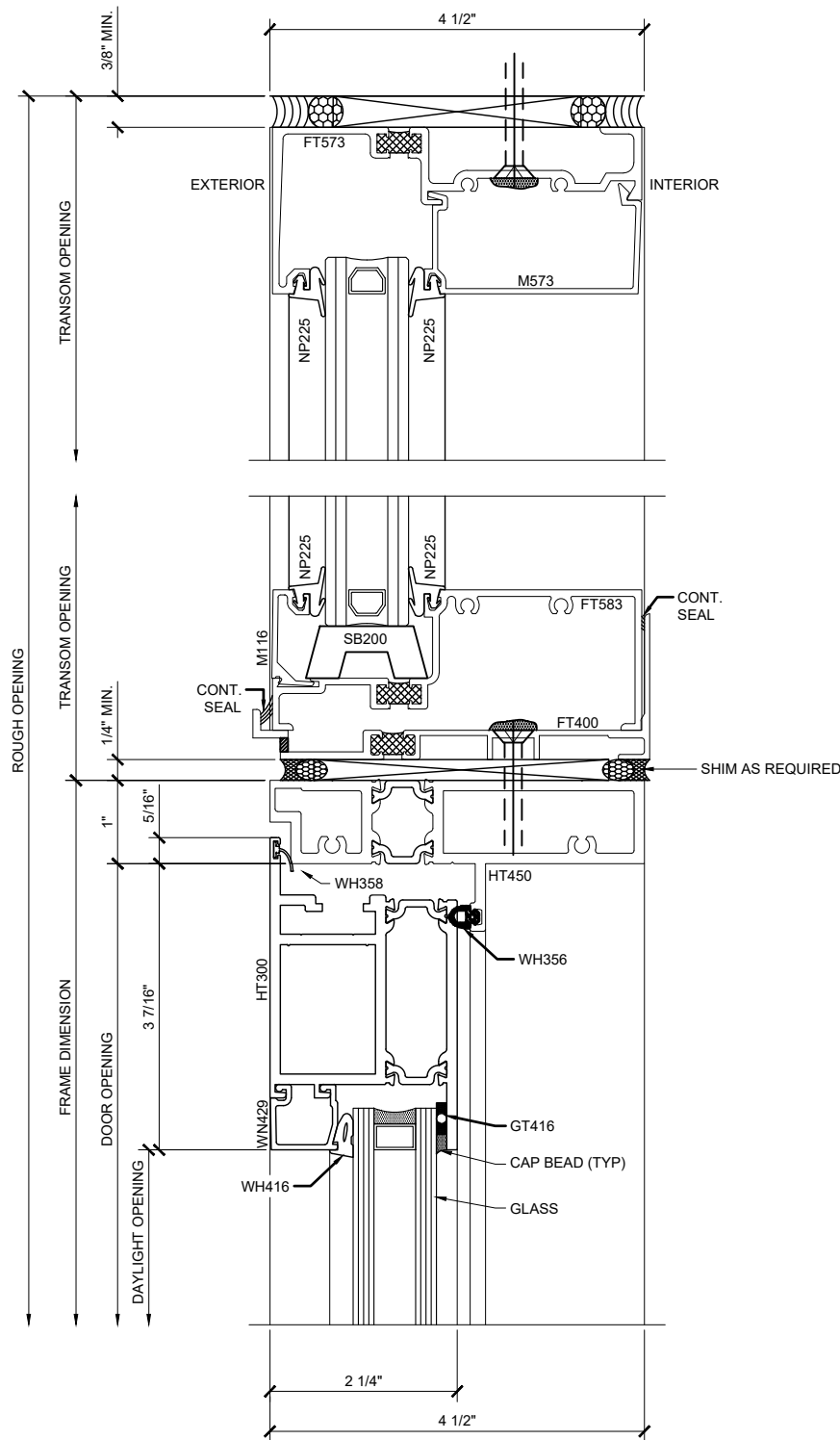
**CRL**  
**ALUMINUM**  
C.R. LAURENCE CO. ARCHITECTURAL PRODUCTS  
2503 E. Vernon Avenue, Los Angeles, CA 90058-1897  
PH: (800)-421-6144 FX: (800)-587-7501 www.crlaurence.com

Description:  
U.S. ALUMINUM  
ENTRANCE  
TERRACE DOORS  
SERIES 900

Drawn By:	RP
Date:	5/12/17
Scale:	AS NOTED
File Name:	CRL US ENTRANCE - TERRACE DOORS - SERIES 900.dwg

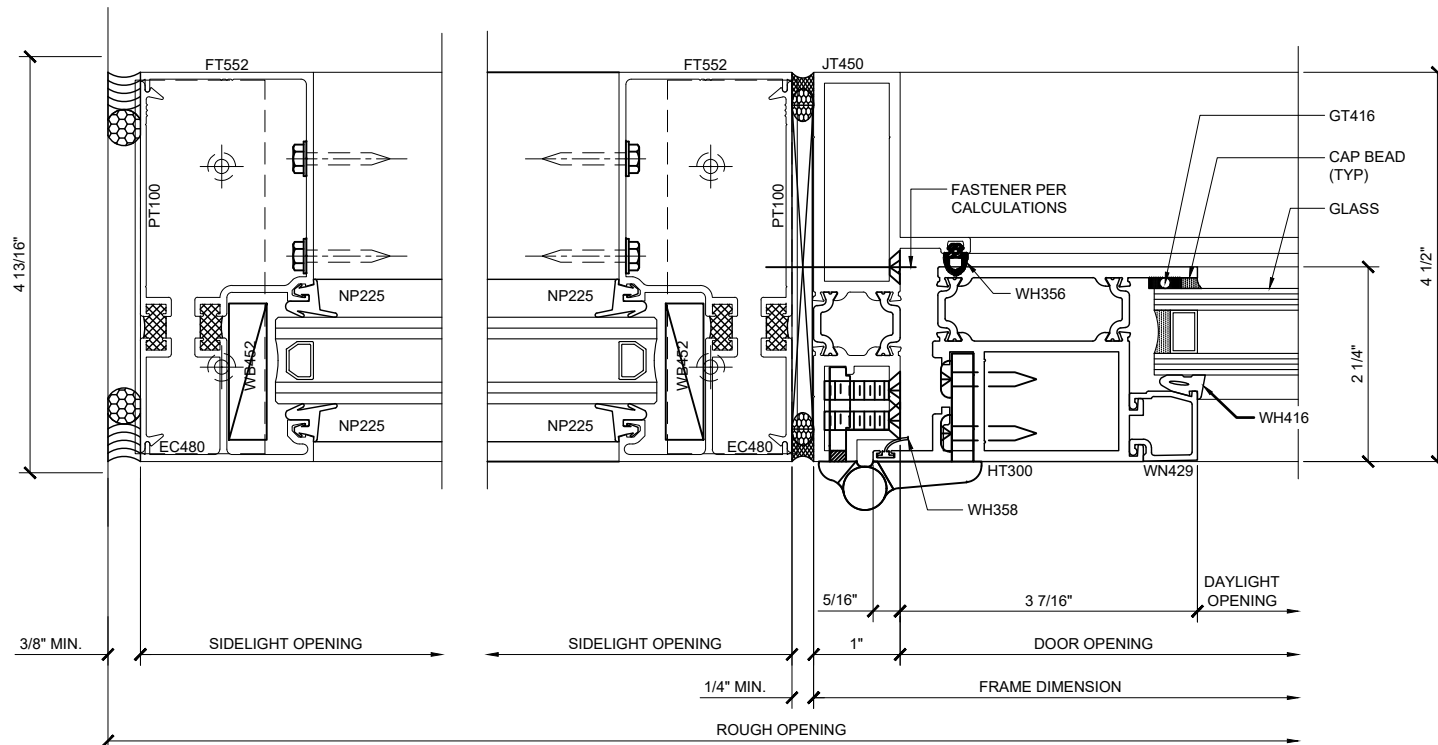
Sheet

3.1



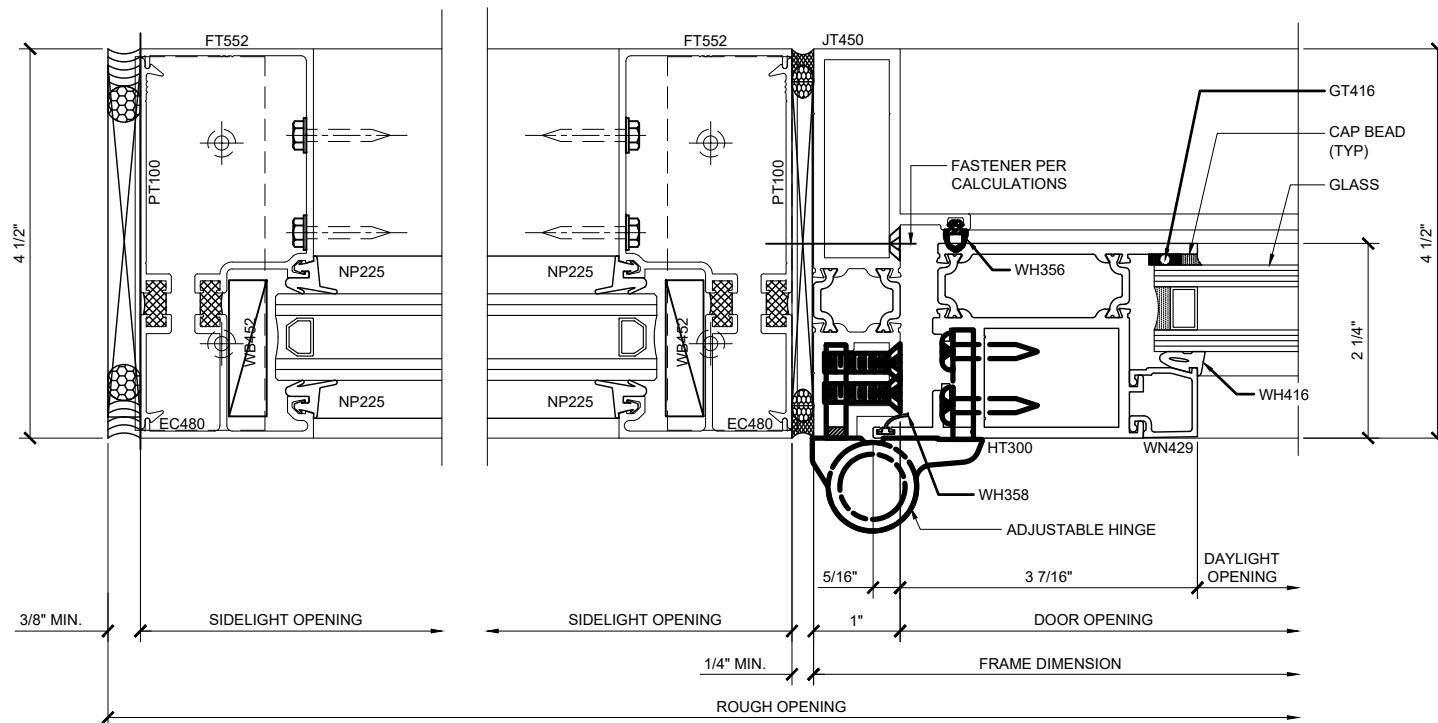
① STOREFRONT - TRANSOM DETAIL

1'-0"=1'-0"



② STOREFRONT - SIDELITE DETAIL JAMB WITH STANDARD 5 KNUCKLE HINGE

1'-0"=1'-0"



③ STOREFRONT - SIDELITE DETAIL JAMB WITH OPTIONAL ADJUSTABLE HINGE

1'-0"=1'-0"

# CRL-US ALUMINUM - TERRACE DOOR - SERIES 900 - OUT- SWING DETAILS DOOR SHOWN IN SERIES FT451 CENTER GLAZE STOREFRONT

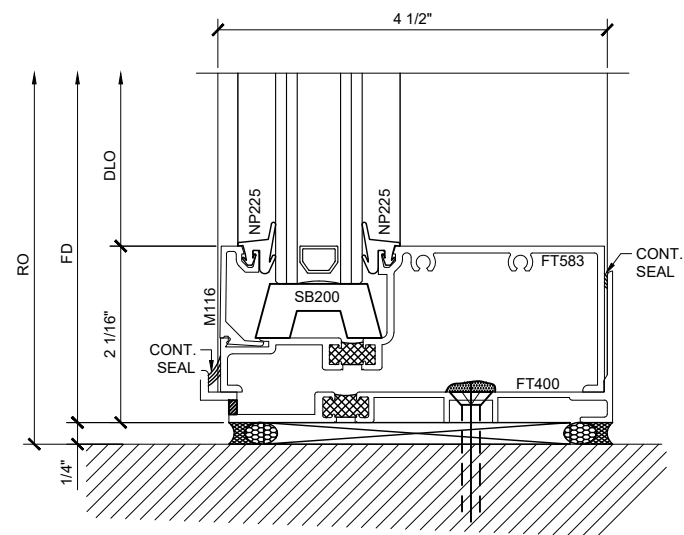
Revisions By:  
TGM 5/17/18

**CRL**  
**ALUMINUM**  
C.R. LAURENCE CO. ARCHITECTURAL PRODUCTS  
2503 E. Vernon Avenue, Los Angeles, CA 90058-1897  
PH: (800) 421-6144 FX: (800) 587-7501 www.crlaluminum.com

Description:  
U.S. ALUMINUM  
ENTRANCE  
TERRACE DOORS  
SERIES 900

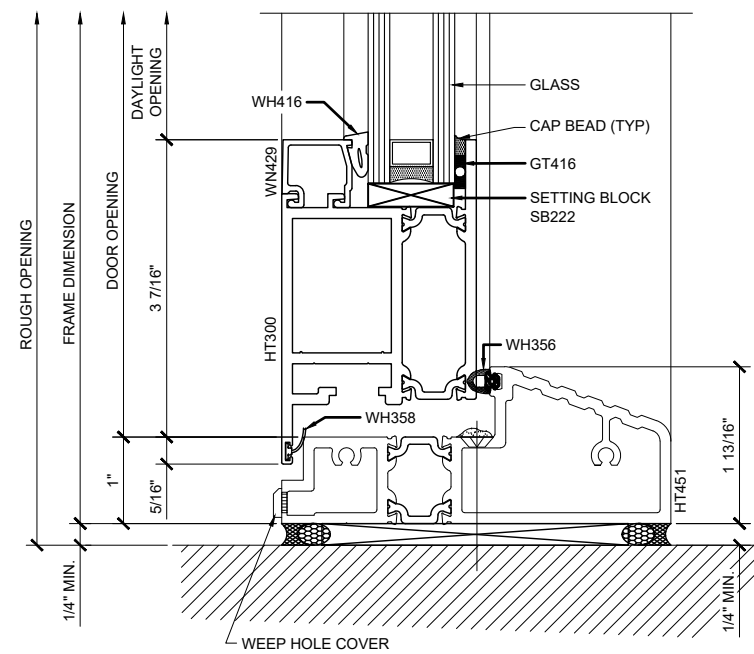
Drawn By: RP  
Date: 5/12/17  
Scale: AS NOTED  
File Name: CRL US ENTRANCE  
- TERRACE DOORS - SERIES 900.dwg





④ STOREFRONT - SILL SIDELITE DETAIL

1'-0"=1'-0"



⑤ OUT-SWING DOOR @ SILL

1'-0"=1'-0"

# CRL-US ALUMINUM - TERRACE DOOR - SERIES 900 - OUT- SWING DETAILS DOOR SHOWN IN SERIES FT451 CENTER GLAZE STOREFRONT

Revisions By:  
TGM 5/17/18

**CRL**  
**ALUMINUM**  
C.R. LAURENCE CO. ARCHITECTURAL PRODUCTS  
2503 E. Vernon Avenue, Los Angeles, CA 90058-1897  
PH: (800)-421-6144 FX: 800-587-7501 www.crlaurence.com

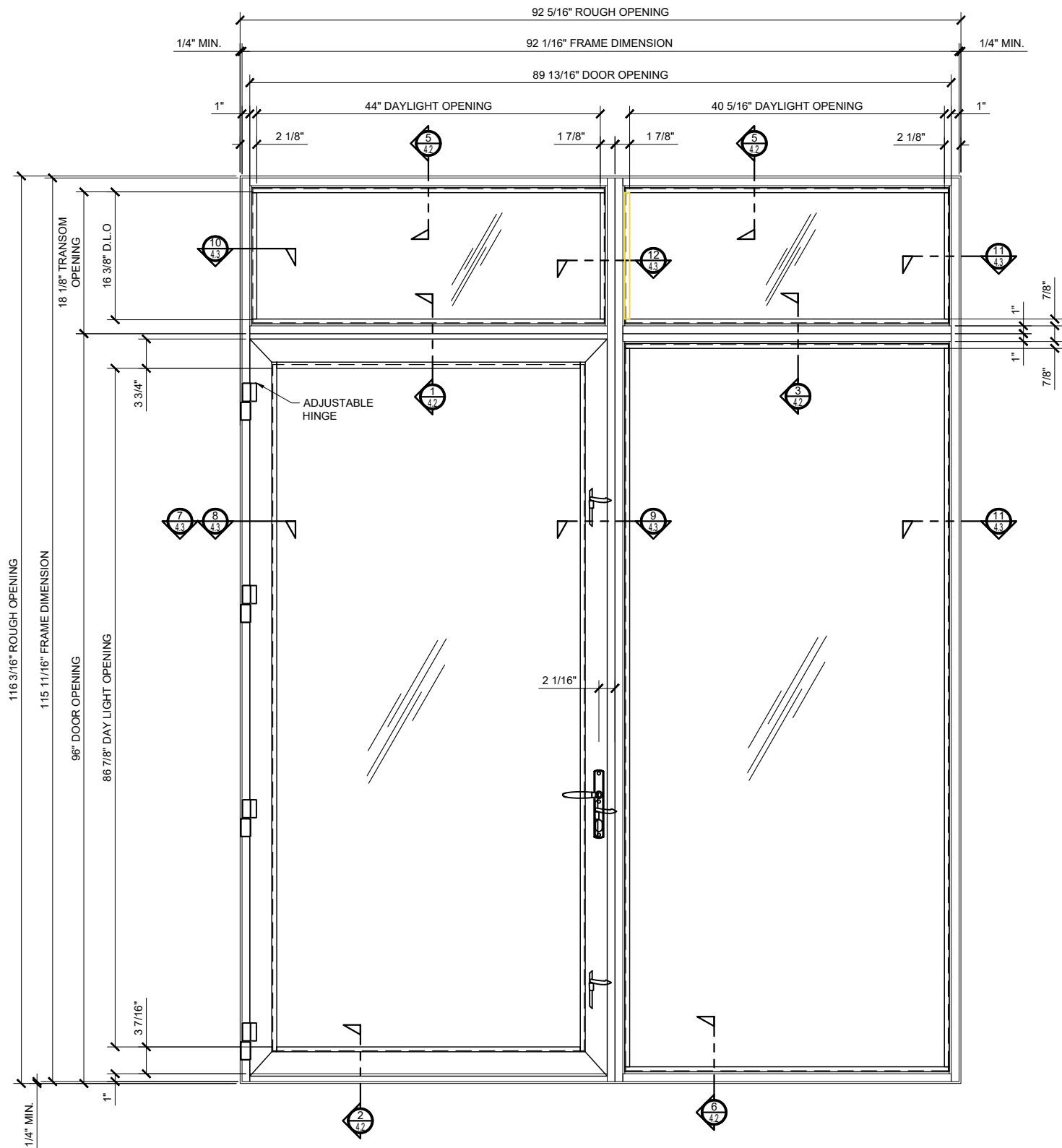
Description:  
U.S. ALUMINUM  
ENTRANCE  
TERRACE DOORS  
SERIES 900

Drawn By: RP  
Date: 5/12/17  
Scale: AS NOTED  
File Name: CRL US ENTRANCE  
- TERRACE DOORS - SERIES 900.dwg

Sheet  
3.3



TERRACE DOORS - SERIES 900



THE SERIES 900 IS A HIGH PERFORMANCE TERRACE DOOR FOR USE IN CONDOMINIUMS, LOFTS, HOTELS, AND HIGH-RISE APARTMENTS WITH ALL THE BENEFITS YOU ARE LOOKING FOR IN A FRENCH DOOR LOOK. THE SERIES 900 TERRACE DOOR WILL WITHSTAND HEAVY TRAFFIC AND THE WORSE OF WEATHER CONDITIONS WHILE MAINTAINING IT'S ELEGANT STYLING. THE 2-1/4\" (57.2) THICK DOOR WITH A 1\" X 4-1/2\" (25 X 114.3) FRAME FEATURES DOUBLE POLYAMIDE GLASS STRIPS PROVIDING SUPERIOR INTERIOR TO EXTERIOR THERMAL SEPARATION. FOR MAXIMUM SECURITY, THE SERIES 900 TERRACE DOOR INCLUDES FIVE-POINT LOCKING DEVICE FOR SINGLES, AND SEVEN- POINT DEVICE FOR PAIRS. THREE EACH, FIVE KNUCKLES ADJUSTABLE HINGES WITH NON- REMOVABLE STAINLESS STEEL PINS PER LEAF COMPLETE THE STURDY LOOK AND FEEL OF THE SERIES 900 TERRACE DOOR.

FINISH:

- \*CLEAR ANODIC COATING
- \*DARK BRONZE ANODIC COATING
- \*BLACK ANODIC COATING

4 HINGES FOR 8'  
3 HINGES UNDER 7'

① CRL-US ALUMINUM TERRACE DOOR - SERIES 900 - OUT SWING - TRANSOME & SIDELITE  
WITH TRANSOM AND SIDELIGHTS

1 1/2"=1'-0"

Revisions By:	
TGM	5/17/18

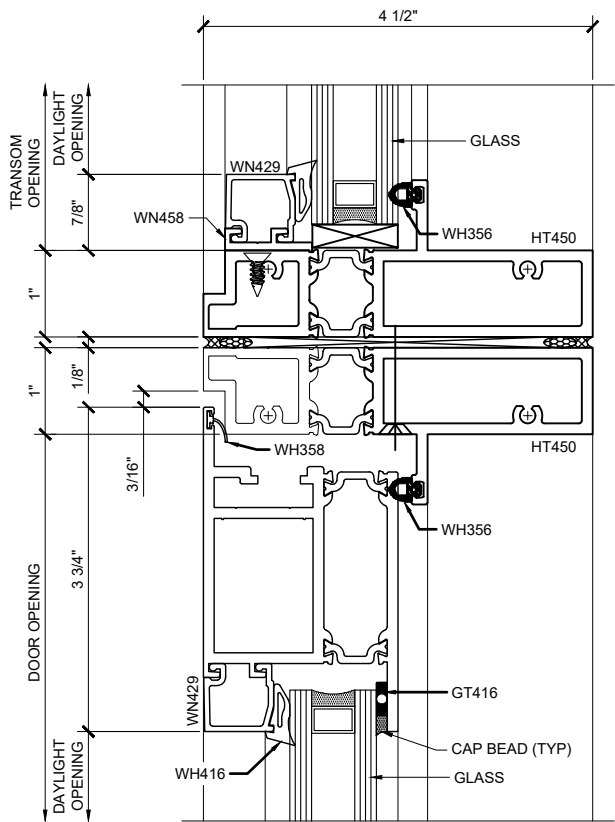


C.R.LAURENCE CO. ARCHITECTURAL PRODUCTS  
2503 E. Vernon Avenue, Los Angeles, CA 90058-1897  
PH: (800)-421-6144 FX: 900-587-7501 www.crlaurence.com

Description:  
U.S. ALUMINUM  
ENTRANCE  
TERRACE DOORS  
SERIES 900

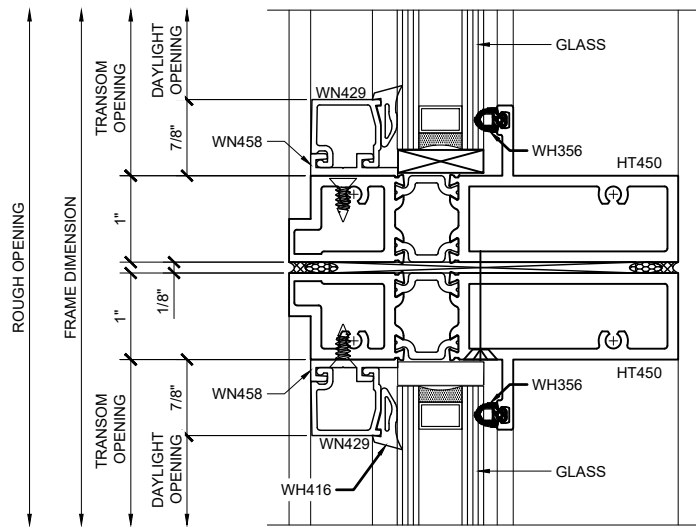
Drawn By:	RP
Date:	5/12/17
Scale:	AS NOTED
File Name: CRL US ENTRANCE - TERRACE DOORS - SERIES 900.dwg	

Sheet



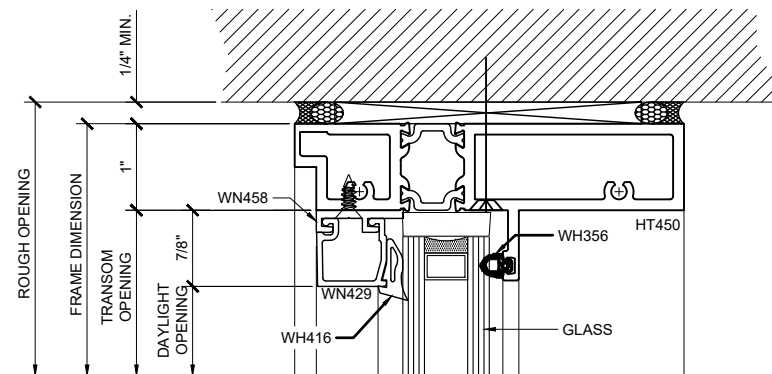
① OUT-SWING DOOR & TRANSOME

1'-0"=1'-0"



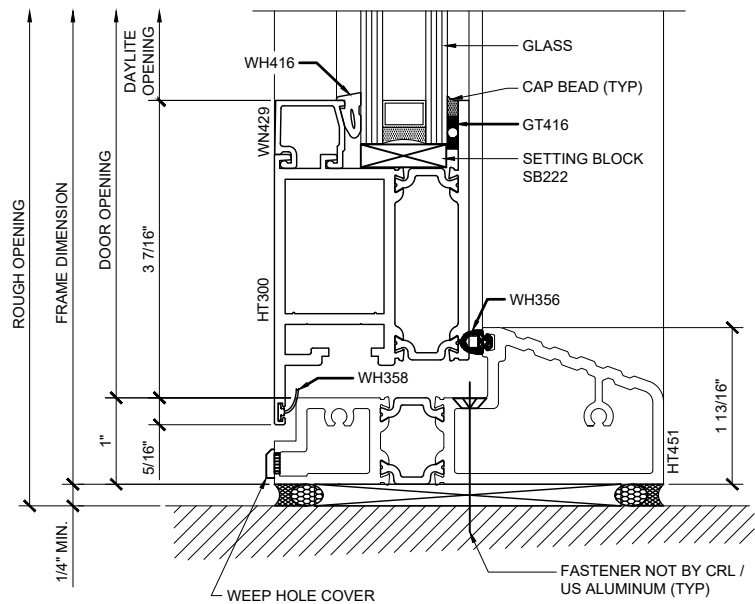
③ SIDELIGHT @ TRANSOME

1'-0"=1'-0"



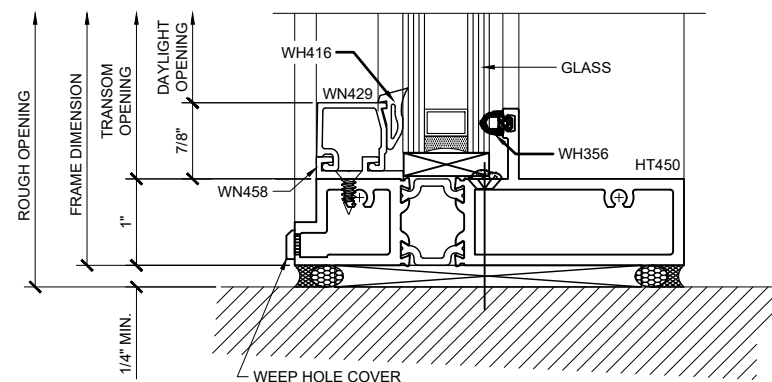
⑤ SIDELIGHT @ HEADER

1'-0"=1'-0"



② OUT-SWING DOOR @ SILL

1'-0"=1'-0"



⑥ SIDELIGHT @ SILL

1'-0"=1'-0"

## CRL-US ALUMINUM - TERRACE DOOR - SERIES 900 - DOOR AND SIDELIGHT DETAILS

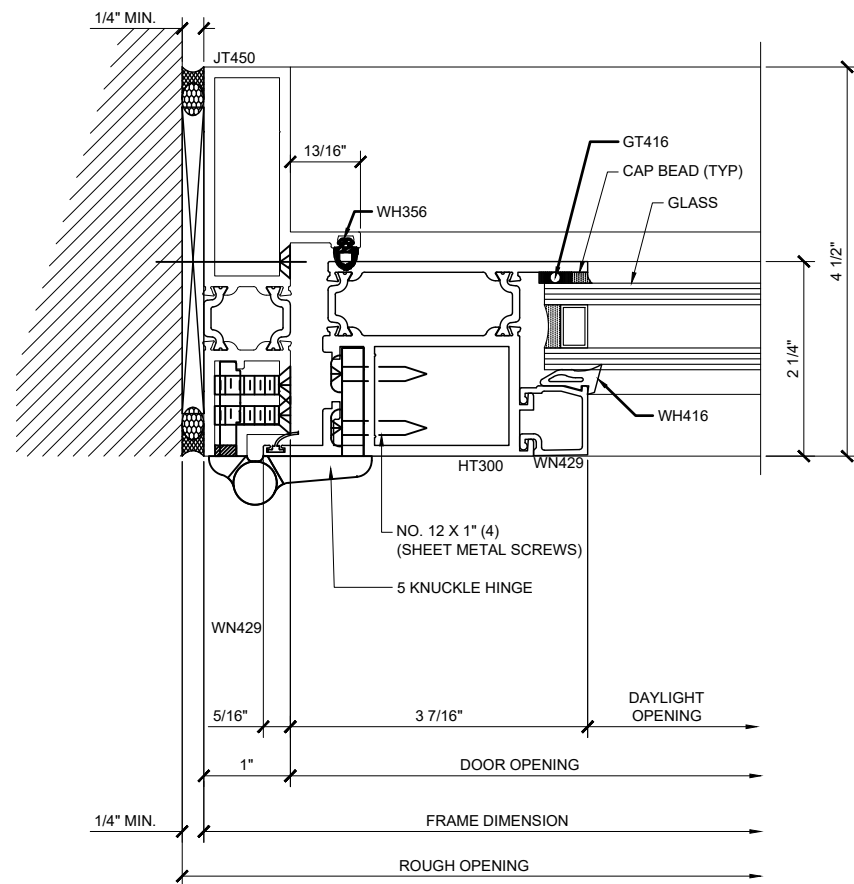
Revisions By:  
TGM 5/17/18

**CRL**  
U.S. ALUMINUM  
C.R. LAURENCE CO. ARCHITECTURAL PRODUCTS  
2503 E. Vernon Avenue, Los Angeles, CA 90058-1897  
PH: (800) 421-6144 FX: (800) 587-7501 www.crlus.com

Description:  
U.S. ALUMINUM  
ENTRANCE  
TERRACE DOORS  
SERIES 900

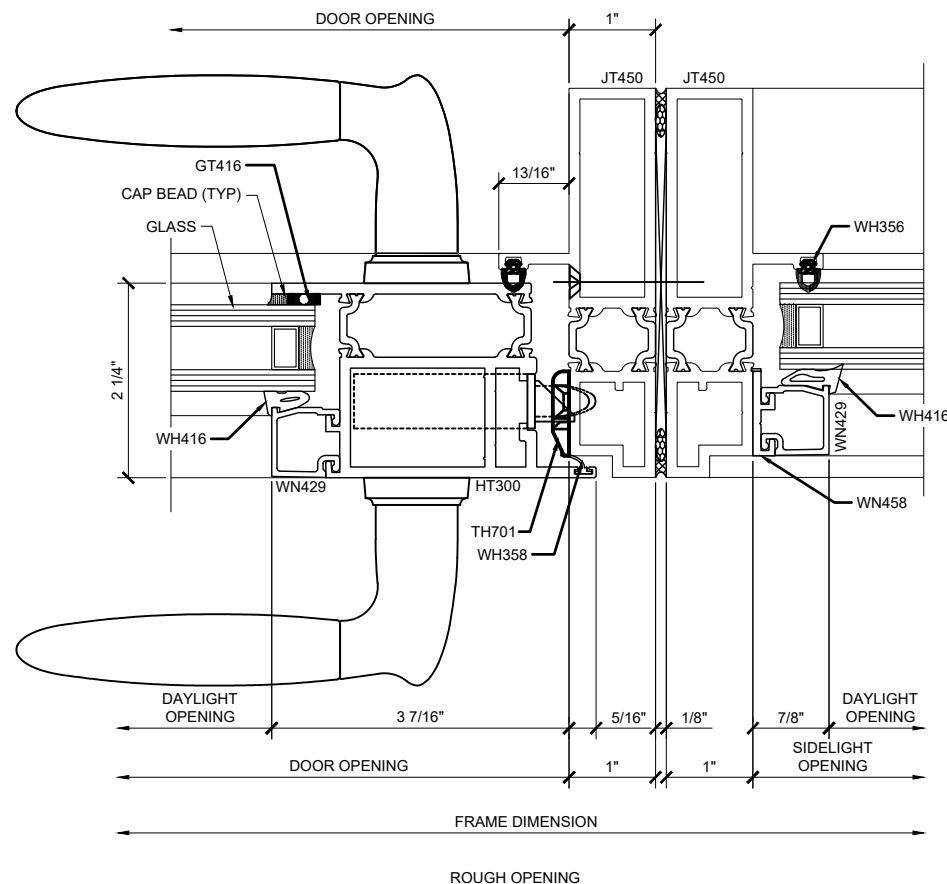
Drawn By: RP  
Date: 5/12/17  
Scale: AS NOTED  
File Name: CRL US ENTRANCE  
- TERRACE DOORS - SERIES 900.dwg

Sheet  
4.2



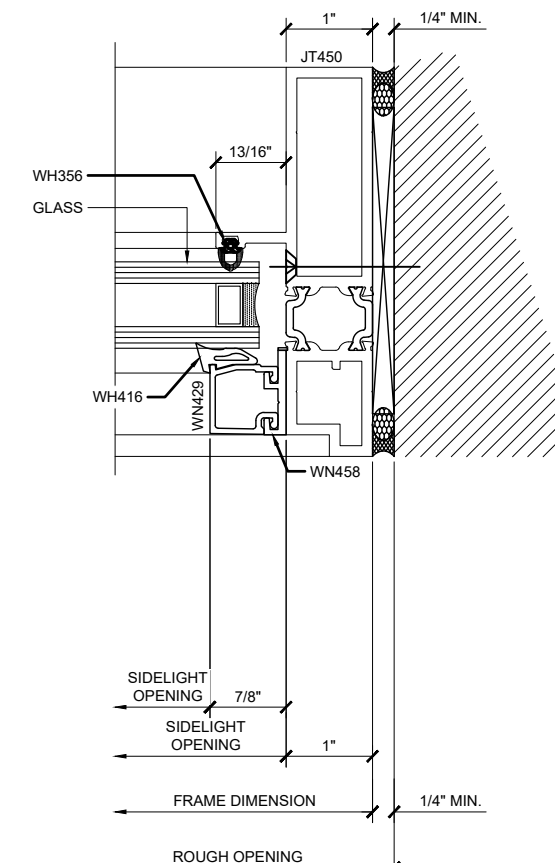
⑦ OUT-SWING DOOR - @ JAMB WITH STANDARD 5 KNUCKLE HINGE

1'-0\"/>



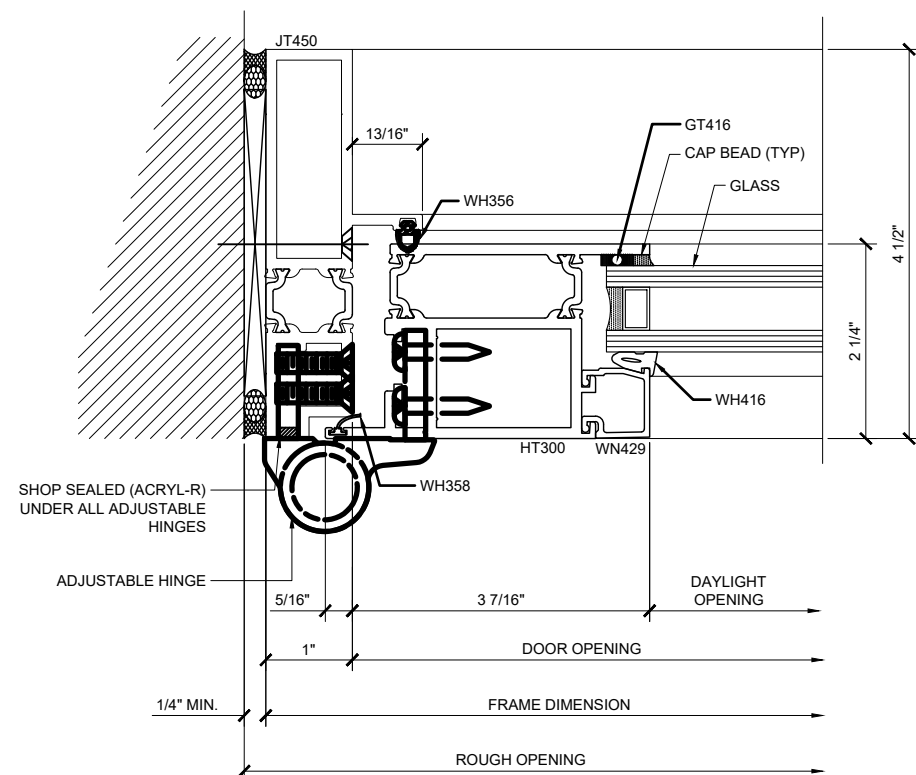
⑨ OUT-SWING DOOR @ JAMB & SIDELIGHT

1'-0\"/>



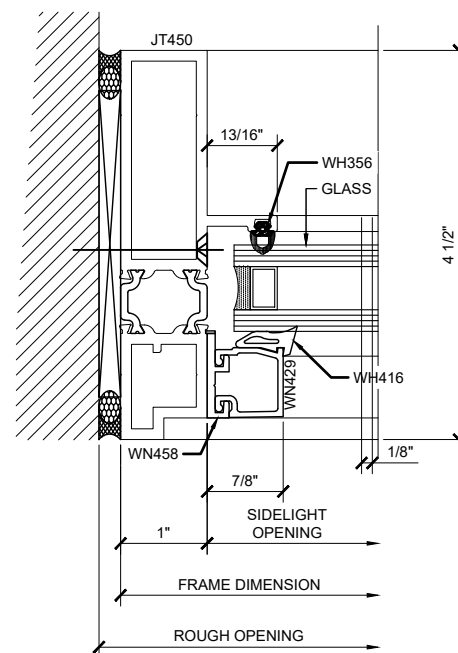
⑪ SIDELIGHT @ JAMB

1'-0\"/>



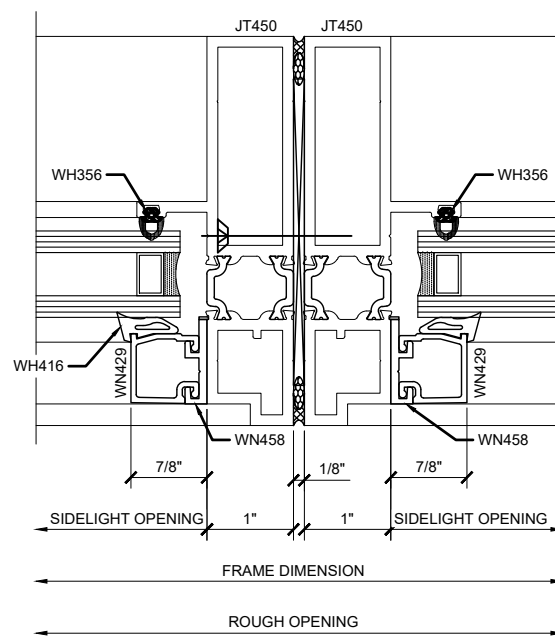
⑧ OUT-SWING DOOR @ JAMB WITH OPTIONAL ADJUSTABLE HINGE

1'-0\"/>



⑩ SIDELIGHT @ JAMB

1'-0\"/>



⑫ SIDELIGHT @ STILE

1'-0\"/>

## CRL-US ALUMINUM - TERRACE DOOR - SERIES 900 - DOOR AND SIDELIGHT DETAILS

Revisions By:  
TGM 5/17/18

**CRL**  
**U.S. ALUMINUM**  
C.R. LAURENCE CO. ARCHITECTURAL PRODUCTS  
2503 E. Vernon Avenue, Los Angeles, CA 90038-1897  
PH: (800)-421-6144 FX: (800)-887-7501 www.crlus.com

Description:  
U.S. ALUMINUM  
ENTRANCE  
TERRACE DOORS  
SERIES 900

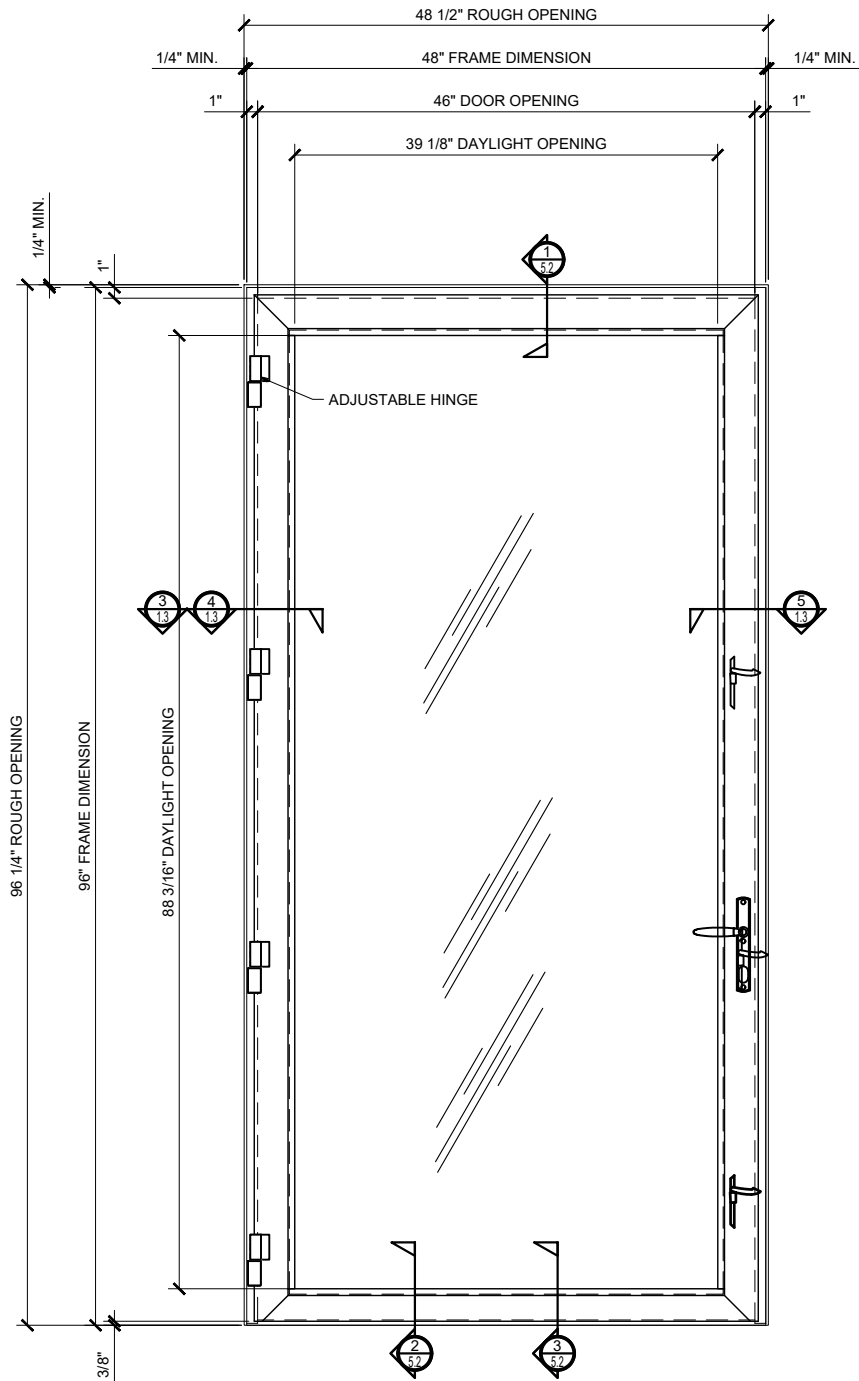
Drawn By: RP  
Date: 5/12/17  
Scale: AS NOTED  
File Name: CRL US ENTRANCE  
- TERRACE DOORS - SERIES 900.dwg

Sheet

4.3



TERRACE DOORS - SERIES 900



THE SERIES 900 IS A HIGH PERFORMANCE TERRACE DOOR FOR USE IN CONDOMINIUMS, LOFTS, HOTELS, AND HIGH-RISE APARTMENTS WITH ALL THE BENEFITS YOU ARE LOOKING FOR IN A FRENCH DOOR LOOK. THE SERIES 900 TERRACE DOOR WILL WITHSTAND HEAVY TRAFFIC AND THE WORSE OF WEATHER CONDITIONS WHILE MAINTAINING ITS ELEGANT STYLING. THE 2-1/4" (57.2) THICK DOOR WITH A 1" X 4-1/2" (25 X 114.3) FRAME FEATURES DOUBLE POLYAMIDE GLASS STRIPS PROVIDING SUPERIOR INTERIOR TO EXTERIOR THERMAL SEPARATION. FOR MAXIMUM SECURITY, THE SERIES 900 TERRACE DOOR WITH AN 1/2" LOW PROFILE THRESHOLD INCLUDES FOUR-POINT LOCKING DEVICE FOR SINGLES. THREE EACH, FIVE KNUCKLES ADJUSTABLE HINGES WITH NON-REMOVABLE STAINLESS STEEL PINS PER LEAF COMPLETE THE STURDY LOOK AND FEEL OF THE SERIES 900 TERRACE DOOR.

FINISH:

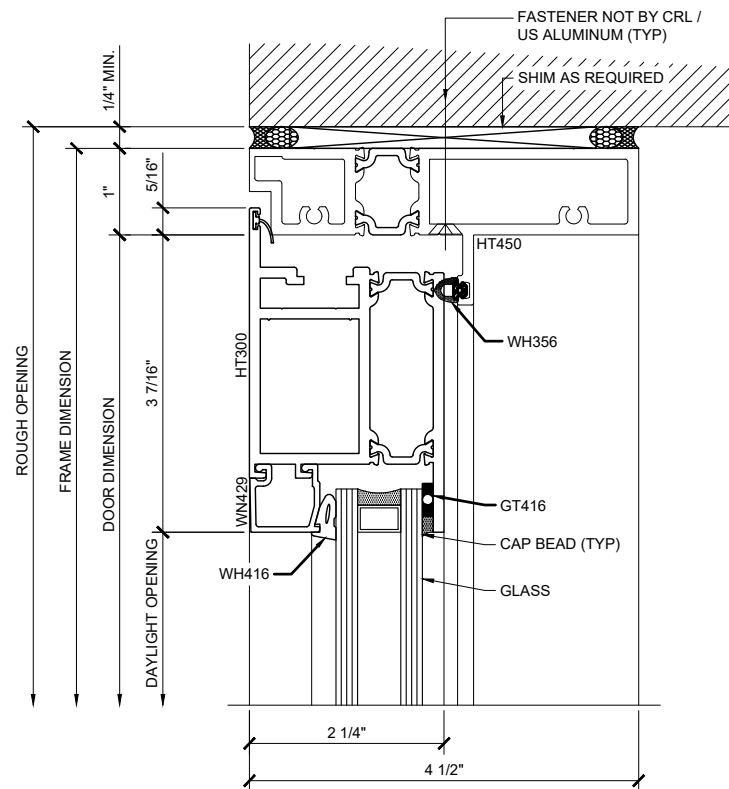
- \*CLEAR ANODIC COATING
- \*DARK BRONZE ANODIC COATING
- \*BLACK ANODIC COATING
- \*CUSTOM PAINT

4 HINGE FOR 8'  
3 HINGES UNDER 8'

① CRL - US ALUMINUM TERRACE DOOR - SERIES 900 - 1/2" LOW PROFILE THRESHOLD - OUT-SWING

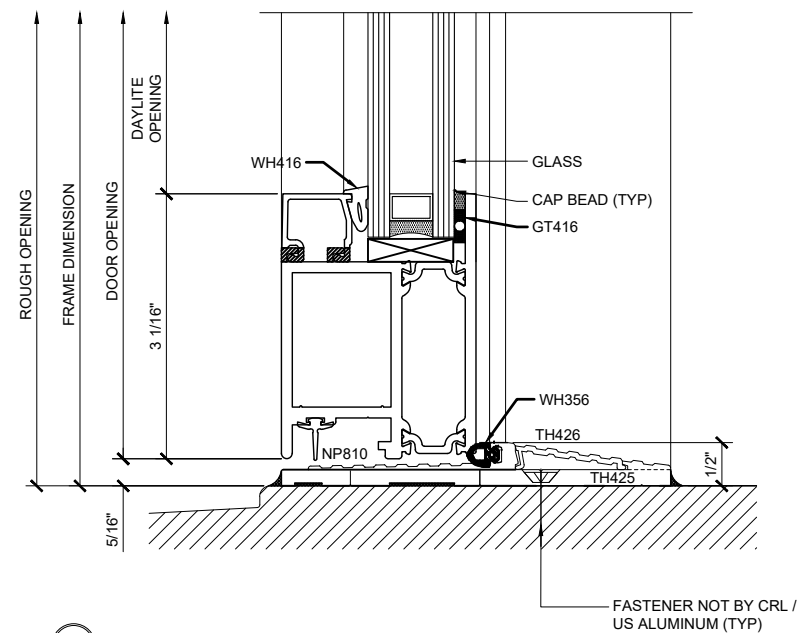
1 1/2"=1'-0"

Revisions By:	
TGM	5/17/18
<div><div>CRLALUMINUM</div><div>C.R. LAURENCE CO. ARCHITECTURAL PRODUCTS 2503 E. Vernon Avenue, Los Angeles, CA 90058-1897 PH: (800)-421-6144 FX: 800-587-7501 www.crlaurence.com</div></div>	
Description: <div>U.S. ALUMINUM ENTRANCE TERRACE DOORS SERIES 900</div>	
Drawn By: RP	
Date: 5/12/17	
Scale: AS NOTED	
File Name: CRL US ENTRANCE - TERRACE DOORS - SERIES 900.dwg	
Sheet	
5.1	



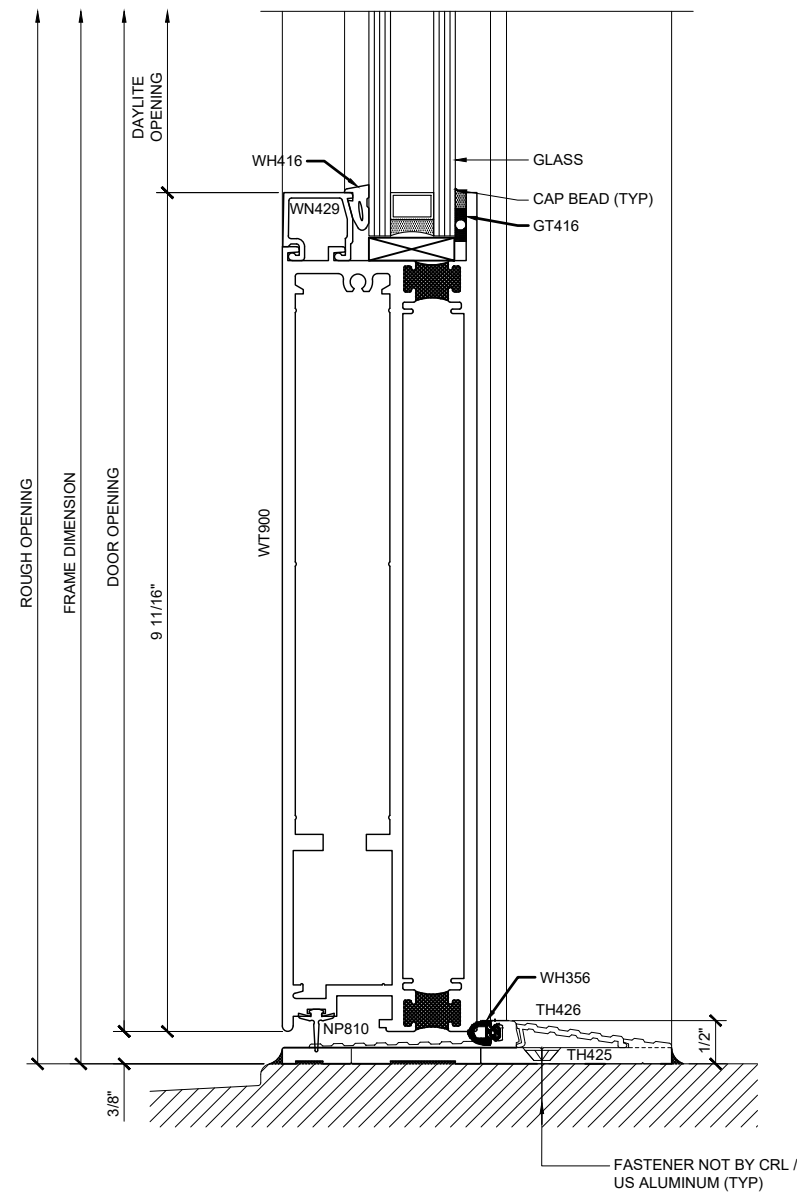
① OUT-SWING DOOR @ HEAD

1'-0"=1'-0"



② OUT-SWING DOOR @ SILL

1'-0"=1'-0"



③ OUT-SWING DOOR @ SILL WITH 10" BOTTOM RAIL

1'-0"=1'-0"

## CRL-US ALUMINUM - TERRACE DOOR - SERIES 900 - 1/2" LOW PROFILE THRESHOLD - OUT-SWING DETAILS

Revisions By:  
TGM 5/17/18

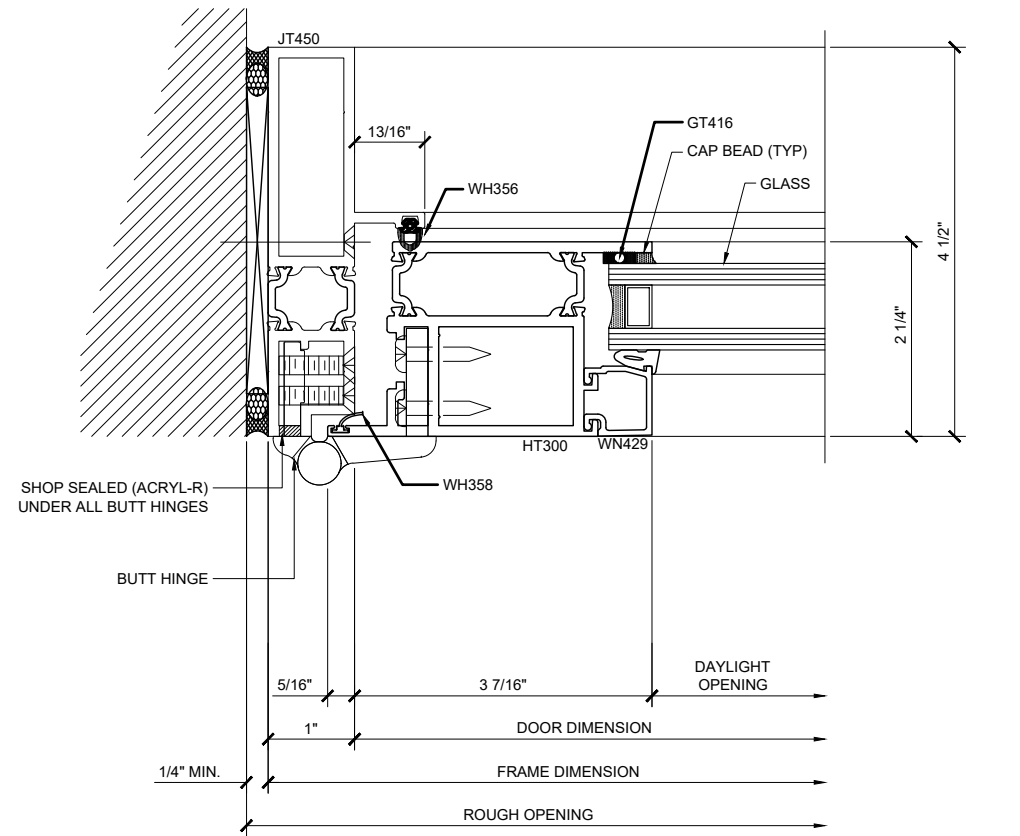
**CRL**  
**U.S. ALUMINUM**  
C.R. LAURENCE CO. ARCHITECTURAL PRODUCTS  
2503 E. Vernon Avenue, Los Angeles, CA 90058-1897  
PH: (800)-421-6144 FX: 900-587-7501 www.crlaurence.com

Description:  
U.S. ALUMINUM  
ENTRANCE  
TERRACE DOORS  
SERIES 900

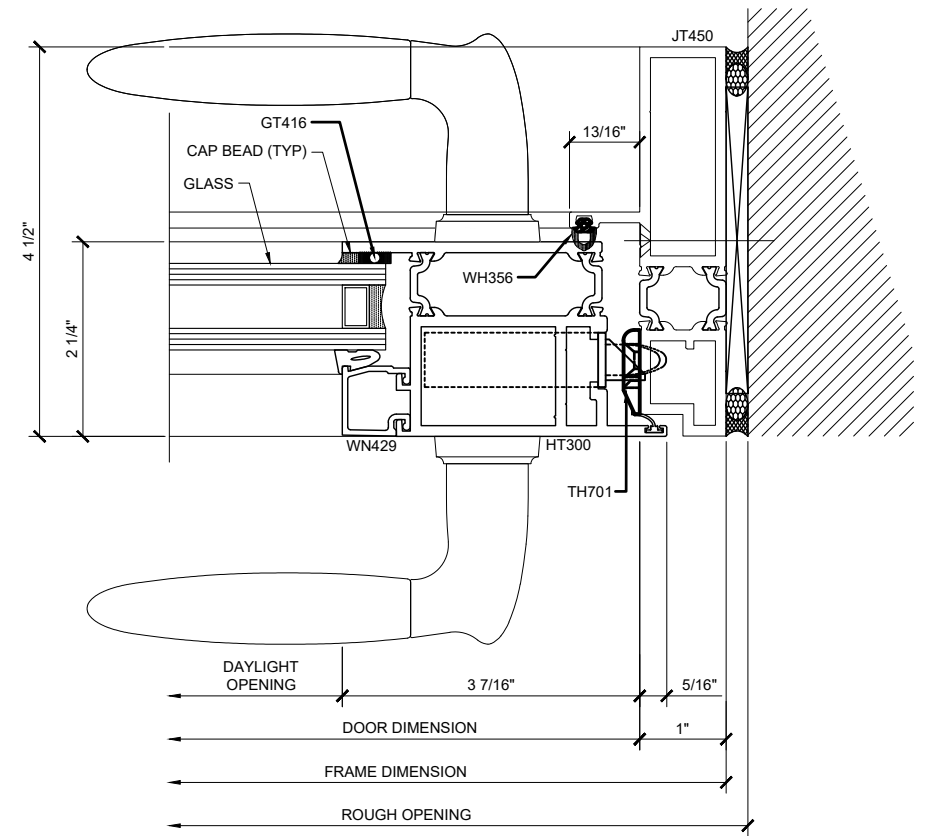
Drawn By: RP  
Date: 5/12/17  
Scale: AS NOTED  
File Name: CRL US ENTRANCE  
- TERRACE DOORS - SERIES 900.dwg

Sheet

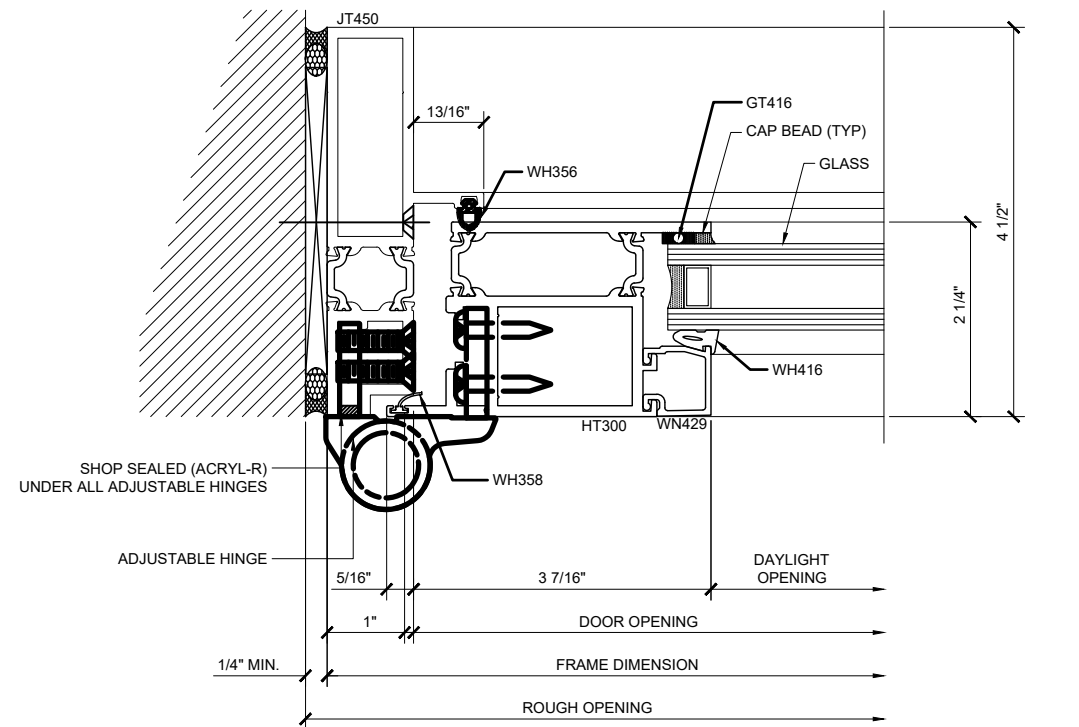
5.2



③ OUT-SWING DOOR @ JAMB WITH STANDARD 5 KNUCKLE HINGE  
1'-0"=1'-0"



⑤ OUT-SWING DOOR @ JAMB  
1'-0"=1'-0"



④ OUT-SWING DOOR @ JAMB WITH OPTIONAL ADJUSTABLE HINGE  
1'-0"=1'-0"

## CRL-US ALUMINUM - TERRACE DOOR - SERIES 900 - 1/2" LOW PROFILE THRESHOLD - OUT-SWING DETAILS

Revisions By:

TGM 5/17/18

**CRL**  
**U.S. ALUMINUM**  
C.R. LAURENCE CO. ARCHITECTURAL PRODUCTS  
2503 E. Vernon Avenue, Los Angeles, CA 90058-1897  
PH: (800)-421-6144 FX: (800)-587-7501 www.crlus.com

Description:  
U.S. ALUMINUM  
ENTRANCE  
TERRACE DOORS  
SERIES 900

Drawn By: RP

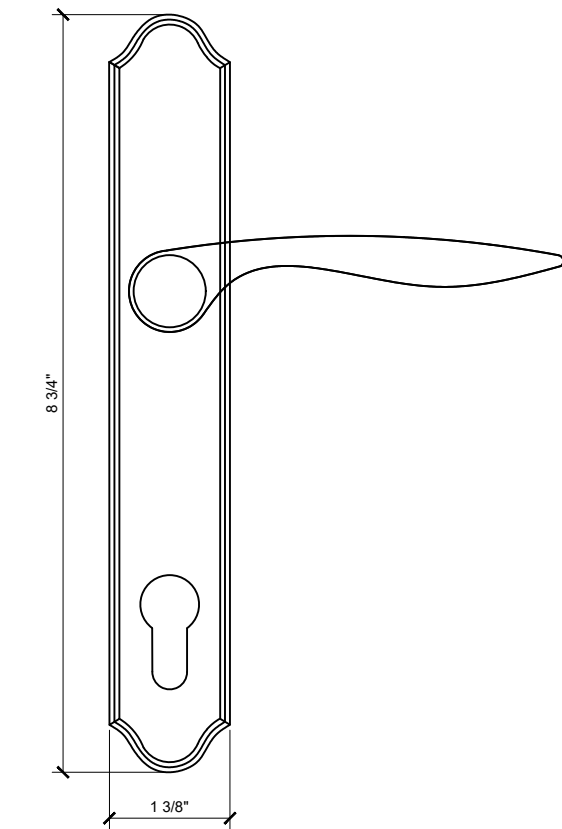
Date: 5/12/17

Scale: AS NOTED

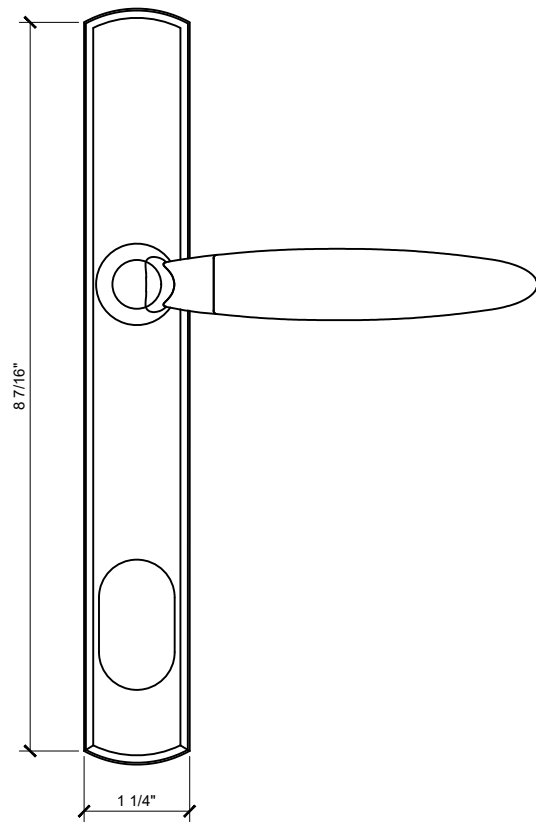
File Name: CRL US ENTRANCE  
- TERRACE DOORS - SERIES 900.dwg

Sheet

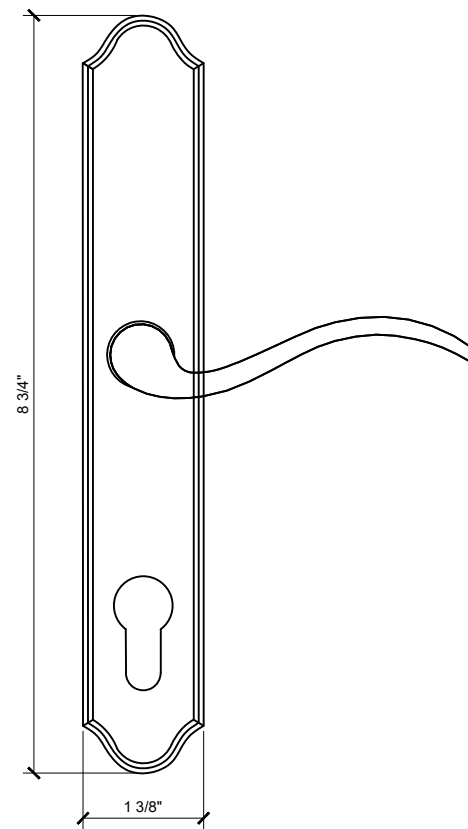
5.3



① HANDLE - MANOR



② HANDLE - HERITAGE



③ HANDLE - ESTATE

CRL-US ALUMINUM - TERRACE DOOR - SERIES 900 - HANDLE OPTIONS

STYLE	POLISHED BRASS	ANTIQUE BRASS	POLISHED CHROME	SATIN NICKEL	ANTIQUE NICKEL	BRUSHED CHROME	OIL RUBBED	RUSTIC UMBER	WHITE	MATTE BLACK
MANOR	■		■	■		■	■	■		■
HERITAGE	■			■			■			
ESTATE	■	■	■	■	■	■		■	■	■

Revisions By:	
TGM	5/17/18



C.R. LAURENCE CO. ARCHITECTURAL PRODUCTS  
2503 E. Vernon Avenue, Los Angeles, CA 90058-1897  
PH: (800)-421-6144 FX: 800-587-7501 www.crlaurence.com

Description:  
U.S. ALUMINUM  
ENTRANCE  
TERRACE DOORS  
SERIES 900

Drawn By:	RP
Date:	5/12/17
Scale:	AS NOTED
File Name: CRL US ENTRANCE - TERRACE DOORS - SERIES 900.dwg	