

CRL[®]

SD21 Catalog

Frameless Shower Door Hardware





Cover: Prima Hinges - Polished Chrome
This page: Melbourne Hinges - Polished Chrome

Table of Contents

Finishes

2 Hardware Finishes

Shower Door Hinges

4 Hinges At A Glance

6 Geneva Hinges

7 Adjustable Geneva Hinges

8 Pinnacle Hinges

9 Adjustable Pinnacle Hinges

10 Vienna Hinges

11 Adjustable Vienna Hinges

12 Cologne Hinges

13 Adjustable Cologne Hinges

14 Victoria Hinges

14 Plymouth Hinges

15 Melbourne Hinges

16 Vernon Hinges

17 Zurich Hinges

18 Prima Hinges

19 Senior Prima Hinges

19 Junior Prima Hinges

20 Cardiff Hinges

20 Senior Cardiff Hinges

21 Palermo Hinges

21 Scala Hinges

Sliding Shower Door Systems

23 Deluxe Serenity Series

25 Deluxe Serenity V-Corner Series

27 Senior Deluxe Serenity Series

29 Cambridge Series

31 Crescent Series

33 Hydroslide Series

35 Bristol Series

37 Contempo Series

39 Clear Space Series

41 Essence Series

43 Cabo Soft Slide Series

45 Cottage CK Series

47 Cottage DK Series

49 Suite EK Series

51 MK Series

Shower Door Pull Handles & Knobs

53 Pull Handles

57 Knobs

Towel Bars & Grab Bars

59 Towel Bars

65 Handle/Towel Bar Combinations

69 Grab Bars

Glass Clamps, Brackets & U-Channels

71 Square Clamps

72 Beveled Clamps

73 Traditional Clamps

73 Adjustable Clamps

74 Glass Brackets

74 Sleeve Over Clamps

75 U-Channels

Shower Door Headers & Support Bars

77 Deluxe Shower Door Headers

79 EZ-Adjust Shower Door Headers

79 Shower Door Thresholds

81 Support Bars

Water Seals & Sweeps

85 Water Seals & Sweeps

Complete Design and Estimating Program for Shower Enclosures

88 Showers Online®

Unmatched Quality and Selection

CRL Frameless Shower Door Hardware is designed to enhance the beauty and function of today's residential and commercial shower enclosures. Every component is meticulously engineered to provide premium aesthetics and lasting durability. A complete selection of hinges, knobs, pull handles, towel/grab bars, headers, u-channels, and sliding shower door systems offers one-stop shop convenience. As the industry leader, CRL stays on top of the latest trends and innovations.

CRL offers a large selection of shower door hardware finishes. Our extensive options can complement the look and feel of virtually any interior.



Polished
Chrome



Satin Chrome
(Matte)



Brushed
Satin Chrome



Polished
Stainless Steel



Brushed
Stainless Steel



Polished
Nickel



Satin
Nickel



Brushed
Nickel



Antique
Brushed Nickel



Gold
Plated



Polished
Brass



Satin
Brass



Unlaquered
Brass



Ultra
Brass



Antique
Brass



Polished
Copper



Brushed
Copper



Antique
Brushed Copper



Antique
Bronze



Brushed
Bronze



Oil Rubbed
Bronze



Matte
Black



Black



Gun
Metal



Hinges At A Glance

Each hinge series is designed and engineered for a unique style and function. Here's a quick look.



Geneva



Pinnacle



Vienna



Melbourne



Vernon



Cologne



Victoria



Plymouth



Zurich



Prima



Cardiff



Palermo



Scala

Geneva Series Hinges

The Geneva Series of professional hinges accommodates 1/2", 3/8", or 5/16" (12, 10, or 8 mm) glass. A variety of styles provide design flexibility, including three wall mount and four glass-to-glass types. Geneva Hinges are self-centering and contain a reversible 5° Pivot Pin (select styles). In addition, Custom Pivot Pins are available to accommodate "off-angle" installations (see below). The hinges are made of solid brass with all moving parts (pins and springs) in stainless steel. Several Geneva Hinges offer the choice of Standard Model, or a 5° Pre-Set Model that allows the door to press in snugly against a jamb.

Geneva Series



Cat. No. GEN037
Wall Mount
Full Back Plate



Cat. No. GEN074
Wall Mount
Short Back Plate



Cat. No. GEN044
Wall Mount
Offset Back Plate



Cat. No. GEN180
180° Glass-to-Glass



Cat. No. GEN537
5° Pre-Set Model
Full Back Plate



Cat. No. GEN574
5° Pre-Set Model
Short Back Plate



Cat. No. GEN544
5° Pre-Set Model
Offset Back Plate



Cat. No. GEN580
5° Pre-Set Model
180° Glass-to-Glass



Cat. No. GEN092
90° Glass-to-Glass



Cat. No. GENT90
"T" Configuration
Glass-to-Glass



Cat. No. GEN045
135° Glass-to-Glass



Cat. No. GEN545
5° Pre-Set Model
135° Glass-to-Glass

Pony Wall Mount Geneva Series



Cat. No. GEN280
Pony Wall Mount
for 180° Application



Cat. No. GEN245
Pony Wall Mount
for 135° Application

Adjustable Geneva Series Hinges

The Adjustable Geneva Series can be adjusted to accommodate the desired angle (up to 90°) after the door is installed. Once the door is hung, simply loosen the Allen set screws and move the door to the desired closed position. By tightening the Allen screws, the door will self-center to the desired closing position. The door can swing 90° inward and 90° outward (adjusting angle from factory set position will reduce 90° swing in that direction). For doors pulling outwards only (using a clear door jamb), the hinge adjusts to close 5° inside the shower area, allowing the door to close snugly against the jamb.

Adjustable Geneva Series



Cat. No. GEN337
Adjustable Wall Mount
Full Back Plate



Cat. No. GEN344
Adjustable Wall Mount
Offset Back Plate



Cat. No. GEN380
Adjustable
180° Glass-to-Glass



Cat. No. GEN345
Adjustable
135° Glass-to-Glass

Geneva Series Specifications

Glass Thicknesses	1/2", 3/8", or 5/16" (12, 10, or 8 mm) Tempered Safety Glass
Special Feature	Offers choice of Standard Model factory set at standard 0° closing position, or 5° Pre-Set Model for tighter closure into shower interior so the door can press snugly against a jamb
Construction	Solid Brass
Hinge Swings	Approximately 90° in and 90° out
Closing Type	Self-Centering when within 15° of closed position
Cut-Out Required Includes	Gaskets, Screws, and Glass Fabrication Dimensions

	Two Hinges	Three Hinges
Maximum Door Weight	80 lbs/36 kg	120 lbs/54 kg
Maximum Door Width	28"/711 mm	32"/813 mm



Pinnacle Series Hinges

The Pinnacle Series has radius corners and beveled edges for a sleek appearance. Pinnacle Hinges accommodate 1/2", 3/8", or 5/16" (12, 10, or 8 mm) thick tempered safety glass, and are self-centering when within 15° of the closed position. Pinnacle hinges are constructed of solid brass, and have stainless steel plunger tips, pins, and springs to ensure a long service life and reliable door closure. The Pinnacle Hinge also contains the same Reversible 5° Pivot Pin featured in our Geneva, Cathedral, Roman, Ultimate, and Elite Series Hinges. A Custom Pivot Pin is also available for "off-angle" installations.

Pinnacle Series



Cat. No. P1N037
Wall Mount
Full Back Plate



Cat. No. P1N074
Wall Mount
Short Back Plate



Cat. No. P1N044
Wall Mount
Offset Back Plate



Cat. No. P1N180
180° Glass-to-Glass



Cat. No. P1N537
5° Pre-Set Model
Full Back Plate



Cat. No. P1N574
5° Pre-Set Model
Short Back Plate



Cat. No. P1N544
5° Pre-Set Model
Offset Back Plate



Cat. No. P1N580
5° Pre-Set Model
180° Glass-to-Glass



Cat. No. P1N045
135° Glass-to-Glass



Cat. No. P1N092
90° Glass-to-Glass

Pony Wall Mount Pinnacle Series Hinges



Cat. No. P1N280
Pony Wall Mount
for 180° Application

Adjustable Pinnacle Series Hinges

Adjustable Pinnacle Series Hinges are designed to accommodate the desired angle (up to 90°) after the door is installed. Once the door is hung, simply loosen the Allen set screws and move the door to the desired closed position. By tightening the Allen screws, the door will self-center to the desired closed position. The door can swing approximately 90° inward and also 90° outward (adjusting angle from factory set position will reduce 90° swing in that direction).

Adjustable Pinnacle Series



Cat. No. P1N337
Adjustable Wall Mount
Full Back Plate



Cat. No. P1N344
Adjustable Wall Mount
Offset Back Plate



Cat. No. P1N380
Adjustable
180° Glass-to-Glass



Cat. No. P1N345
Adjustable
135° Glass-to-Glass

Pinnacle Series Specifications

Glass Thicknesses	1/2", 3/8", or 5/16" (12, 10, or 8 mm) Tempered Safety Glass
Special Feature	Offers choice of Standard Model factory set at standard 0° closing position, or 5° Pre-Set Model for tighter closure into shower interior so the door can press snugly against a jamb
Construction	Solid Brass
Hinge Swings	Approximately 90° in and 90° out
Closing Type	Self-Centering when within 15° of closed position
Cut-Out Required Includes	Gaskets, Screws, and Glass Fabrication Dimensions

	Two Hinges	Three Hinges
Maximum Door Weight	80 lbs/36 kg	120 lbs/54 kg
Maximum Door Width	28"/711 mm	32"/813 mm



Vienna Series Hinges

Vienna Hinges are designed for wider, heavier doors. Two strategically placed steel pins inside the hinge provide template options. For the safety of “mouse-ears” type cut-outs, the two steel pins should be left in place. This allows the Vienna Hinge to be used with its own CRL “mouse-ears” cut-out. For increased adjustability, the two pins can be removed.

Vienna Series



Cat. No. V1E037
Wall Mount
Full Back Plate



Cat. No. V1EH037
“H” Wall Plate Hinge



Cat. No. V1E074
Wall Mount
Short Back Plate



Cat. No. V1E044
Wall Mount
Offset Back Plate



Cat. No. V1E180
180° Glass-to-Glass



Cat. No. V1E537
5° Pre-Set Model
Full Back Plate



Cat. No. V1E544
5° Pre-Set Model
Offset Back Plate



Cat. No. V1E580
5° Pre-Set Model
180° Glass-to-Glass



Cat. No. V1E045
135° Glass-to-Glass



Cat. No. V1E092
90° Glass-to-Glass

“Positive Close” Vienna Series Hinges



Cat. No. V1E067
Full Back Plate



Cat. No. V1E780
180° Glass-to-Glass

Adjustable Vienna Series Hinges

The Adjustable Vienna Series is designed to accommodate the desired angle (up to 90 degrees) after the door is hung. Simply loosen the Allen set screws and move the door to the desired closed position. By tightening the Allen screws, the door will self-center to the desired closed position. The door can swing 90 degrees inward and 90 degrees outward (adjusting angle from factory set position will reduce 90 degree swing in that direction).

Adjustable Vienna Series



Cat. No. VIE337
Adjustable Wall Mount
Full Back Plate



Cat. No. VIE344
Adjustable Wall Mount
Offset Back Plate



Cat. No. VIE380
Adjustable
180° Glass-to-Glass

Vienna Series Specifications

Glass Thicknesses	1/2" or 3/8" (12 or 10 mm) Tempered Safety Glass
Construction	Solid Brass
Hinge Swings	Approximately 90° in and 90° out
Closing Type	Self-Centering when within 15° of closed position
Cut-Out Required Includes	Gaskets, Screws, and Glass Fabrication Dimensions

Except VIE074, VIE044 and VIE544 Models

	Two Hinges	Three Hinges
Maximum Door Weight	110 lbs/50 kg	140 lbs/63 kg
Maximum Door Width	36"/914 mm	36"/914 mm

For VIE074, VIE044 and VIE544 Models Only

	Two Hinges	Three Hinges
Maximum Door Weight	100 lbs/45 kg	130 lbs/59 kg
Maximum Door Width 3/8" (10 mm) Glass	34"/864 mm	34"/864 mm
Maximum Door Width 1/2" (12 mm) Glass	32"/813 mm	32"/813 mm



Cologne Series Hinges

Cologne Hinges have radius corners and beveled edges. Cologne Hinges are designed for wider, heavier doors. Two strategically placed steel pins inside the hinge provide template options, and satisfy two schools of thought for mounting shower door hinges. For the safety of "mouse-ears" type cut-outs, the two steel pins should be left in place. This allows the Cologne Hinge to be used with its own CRL "mouse-ears" cut-out. For increased adjustability, the two pins can be removed.

Cologne Series



Cat. No. COL037
Wall Mount
Full Back Plate



Cat. No. COL044
Wall Mount
Offset Back Plate



Cat. No. COL180
180° Glass-to-Glass



Cat. No. COL045
135° Glass-to-Glass



Cat. No. COL537
5° Pre-Set Model
Full Back Plate



Cat. No. COL544
5° Pre-Set Model
Offset Back Plate



Cat. No. COL092
90° Glass-to-Glass

"Positive Close" Cologne Series Hinges



Cat. No. COL067
Wall Mount Full Plate



Cat. No. COL780
180° Glass-to-Glass

Adjustable Cologne Series Hinges

The Adjustable Cologne Series is designed to accommodate the desired angle (up to 90°) after the door is installed. Once the door is hung, simply loosen the Allen set screws and move the door to the desired closed position. By tightening the Allen screws, the door will self-center to the desired angle. The door can swing 90° inward and also 90° outward (adjusting angle from factory set position will reduce 90° swing in that direction).

Adjustable Cologne Series



Cat. No. COL337
Adjustable Wall Mount
Full Back Plate



Cat. No. COL380
Adjustable
180° Glass-to-Glass

Cologne Series Specifications

Glass Thicknesses	1/2" or 3/8" (12 or 10 mm) Tempered Safety Glass
Construction	Solid Brass
Hinge Swings	Approximately 90° in and 90° out
Closing Type	Self-Centering when within 15° of closed position
Cut-Out Required Includes	Gaskets, Screws, and Glass Fabrication Dimensions

Except COL044 and COL544 Models

	Two Hinges	Three Hinges
Maximum Door Weight	110 lbs/50 kg	140 lbs/63 kg
Maximum Door Width	36"/914 mm	36"/914 mm

For COL044 and COL544 Models Only

	Two Hinges	Three Hinges
Maximum Door Weight	100 lbs/45 kg	130 lbs/59 kg
Maximum Door Width 3/8" (10 mm) Glass	34"/864 mm	34"/864 mm
Maximum Door Width 1/2" (12 mm) Glass	32"/813 mm	32"/813 mm



Victoria Series Hinges

Victoria Series Hinges are designed to support heavier, wider doors using two hinges instead of three. Victoria Series Hinges utilize an integrated stiffening beam to minimize clamping plate flex, resulting in exceptional holding power. They also deliver increased self-centering force, and heat-treated stainless steel springs produce enhanced durability. Do not exceed two hinges per door.



Cat. No. VCT037
Wall Mount

Victoria Series Specifications

Glass Thicknesses	1/2" or 3/8" (12 or 10 mm) Tempered Safety Glass
Construction	Solid Brass
Hinge Swings	Approximately 90° in and 90° out
Closing Type	Self-Centering when within 15° of closed position
Cut-Out Required Includes	Gaskets, Screws, and Glass Fabrication Dimensions



Cat. No. VCT180
180° Glass-to-Glass

Maximum Door Weight	Two Hinges
Maximum Door Width	140 lbs/64 kg
	39"/1 m



Plymouth Series Hinges

Plymouth Series Hinges are designed to support heavier, wider doors using two hinges. This produces a frameless aesthetic by reducing the amount of hardware needed. Plymouth Series Hinges utilize an integrated stiffening beam to minimize clamping plate flex, resulting in exceptional holding power. They also deliver increased self-centering force, and heat-treated stainless steel springs produce enhanced durability.



Cat. No. PLY037
Wall Mount

Plymouth Series Specifications

Glass Thicknesses	1/2" or 3/8" (12 or 10 mm) Tempered Safety Glass
Construction	Solid Brass
Hinge Swings	Approximately 90° in and 90° out
Closing Type	Self-Centering when within 15° of closed position
Cut-Out Required Includes	Gaskets, Screws, and Glass Fabrication Dimensions



Cat. No. PLY180
180° Glass-to-Glass

Maximum Door Weight	Two Hinges
Maximum Door Width	140 lbs/64 kg
	39"/1 m



Melbourne Series Hinges

Melbourne Series Hinges feature large hinge plates that provide more clamping force. The required simple rectangular cut-out and inset style gasket system allow ease of installation. Constructed of forged solid brass, the Melbourne Series offers five versions of Wall Mount Models, a 180 Degree Glass-to-Glass Model (with or without Cover Plates), a 180 Degree Glass-to-Glass Adjustable Model, and Replacement Cover Plates (for MEL024 and MEL182 only) to conceal rear hinge screws and wall mount screws (MEL024 only). Melbourne Hinges contain the same 5 degree reversible pivot pin used in our Geneva Series Hinges..



Cat. No. MEL037
Wall Mount
Full Back Plate



Cat. No. MEL044
Wall Mount
Offset Back Plate



Cat. No. MEL024
* Wall Mount
Offset Back Plate



Cat. No. MEL054
Face Mount
with Cover Plate



Cat. No. MEL324
Adjustable
Wall Mount Offset Back
Plate with Cover Plate



Cat. No. MEL180
180° Glass-to-Glass
Hinge Only



Cat. No. MEL380
Adjustable
180° Glass-to-Glass



Cat. No. MEL024CP
Replacement
Cover Plates
Only for MEL024



Cat. No. MEL180CP
Replacement
Cover Plates
Only for MEL182



Cat. No. MEL182
Includes Hinge and
MEL180CP Cover Plates

* Includes Hinge and MEL024CP Cover Plate

Melbourne Series Specifications

Glass Thicknesses	1/2", 3/8", or 5/16" (12, 10, or 8 mm) Tempered Safety Glass	
Construction	Solid Brass	
Hinge Swings	Approximately 90° in and 90° out	
Closing Type	Self-Centering when within 15° of closed position	
Cut-Out Required Includes	Gaskets, Screws, and Glass Fabrication Dimensions	

	Two Hinges	Three Hinges
Maximum Door Weight	100 lbs/45 kg	120 lbs/54 kg
Maximum Door Width	30"/762 mm	34"/864 mm



Vernon Series Hinges

The self-closing Vernon Hinge represents the synthesis between automatic mechanical hinges and hydraulic door closers. A choice of Hold Open and No Hold Open models allows for flexibility of installation. A control valve allows for adjust of hinge to the desired closing speed. Vernon is ambidextrous, with positive stops at zero and 90 degrees, providing even more design freedom. The Vernon Hinge features an aluminum body in distinct configurations for Wall Mount and Glass-to-Glass applications.



Cat. No. H8010BT
Hold Open Model
Wall Mount
Full Back Plate



Cat. No. H8011BT
Hold Open Model
Wall Mount
Offset Back Plate



Cat. No. H8060BT
Hold Open Model
Wall Mount
One-Way Swinging



Cat. No. H8015BT
Hold Open Model
180° Glass-to-Glass



Cat. No. H8210BT
No Hold Open Model
Wall Mount
Full Back Plate



Cat. No. H8211BT
No Hold Open Model
Wall Mount
Offset Back Plate



Cat. No. H8260BT
No Hold Open Model
Wall Mount
One-Way Swinging



Cat. No. H8215BT
No Hold Open Model
180° Glass-to-Glass

Vernon Series Specifications

Glass Thicknesses	9/16", 1/2", 3/8", or 5/16" (13.52, 12, 10, or 8 mm)
Construction	Aluminum
Hinge Swings	Approximately 90° in and 90° out
Closing Type	Self-Centering when within 15° of closed position
Cut-Out Required Includes	Snap-In Molded Gaskets; Hex Screws

Wall Mount Models and Glass-to-Glass Models

	Wall Mount	Glass-to-Glass
	Two Hinges	Two Hinges
Maximum Door Weight	220 lbs/100 kg	176 lbs/80 kg
Maximum Door Width	39"/1m	39"/1m



Zurich Series Hinges

The Zurich Series is a bifold Hinge for 3/8" or 5/16" (10 or 8 mm) tempered safety glass. All seven Zurich Hinge models feature stainless steel or brass construction, and are available in up to nine finishes. In addition, screws and washers are interchangeable (see below). Only two holes per Hinge per panel are required, with no cut-out necessary.



Cat. No. ZUR01
180° Glass-to-Glass
Outswing or Bi-Fold
Inswing



Cat. No. ZUR02
180° Glass-to-Glass
Inswing or Bi-Fold
Outswing



Cat. No. ZUR03
Wall Mount Inswing



Cat. No. ZUR04
Glass-to-Glass
90° Inswing



Cat. No. ZUR05
Wall Mount Outswing



Cat. No. ZUR06
Glass-to-Glass
90° Outswing



Cat. No. ZUR07
Glass-to-Glass
Inline Outswing



Cat. No. ZUR70
Screw and Washer
Accent Kits

Zurich Series Specifications

Glass Thicknesses	5/16" or 3/8" (8 or 10 mm) Tempered Safety Glass	
Construction	Stainless Steel or Solid Brass	
Hinge Swings	See descriptions next to photos of hinges	
Closing Type	Self-Centering when within 15° of closed position	
Cut-Out Required Includes	Gaskets, Screws, and Glass Fabrication Dimensions	

	Two Hinges	Three Hinges
Maximum Door Weight	100 lbs/45 kg	150 lbs /68 kg
Maximum Door Width	36"/914 mm	40"/1016 mm



Prima Series Hinges

Prima Series Pivot Hinges are designed for use with 3/8" or 5/16" (10 or 8 mm) tempered safety glass, and provide a wide array of application possibilities. Advantages of pivot type hinges include the fact that they carry the majority of the door weight on the bottom and have the ability to be inset from the wall, enabling clearance for towel bars and other projections.



Cat. No. PPH01
Top or Bottom Mount



Cat. No. PPH08
Top or Bottom Mount
with Rear Drip Plate



Cat. No. PPHWP1
Drip Plate Only for Top
and Bottom Mount Hinge



Cat. No. PPH06
Header Mount Compatible
Only with EZ Adjust Header



Cat. No. PPH05L
Offset Bracket Wall Mount
Left Hand Mount



Cat. No. PPH05R
Offset Bracket Wall Mount
Right Hand Mount



Cat. No. PPH03
L-Bracket
Wall Mount



Cat. No. PPH02
Glass-to-Fixed
Transom Mount



Cat. No. PPH04
Inline Panel Mount



Cat. No. PPH07
Top or Bottom Mount with
Attached Reversible U-Clamp



Cat. No. PPH135L
135° Glass-to-Glass Left



Cat. No. PPH135R
135° Glass-to-Glass Right



Cat. No. PPH0735L
Top or Bottom Mount
135° Glass-to-Glass Left



Cat. No. PPH0735R
Top or Bottom Mount
135° Glass-to-Glass Right



Cat. No. PPH301
Adjustable
Top or Bottom Mount



Prima Series Specifications

Glass Thicknesses	3/8" or 5/16" (10 or 8 mm)
Construction	Solid Brass
Hinge Swings	Full Rotation
Closing Type	Self-Centering when within 15° of closed position
Cut-Out Required Includes	Gaskets, Screws, and Glass Fabrication Dimensions
Maximum Door Weight	Two Hinges 100 lbs/45 kg
Maximum Door Width	31"/787 mm

Senior Prima Series Hinges

Senior and Junior Prima Series Hinges carry the majority of the weight on the bottom, and have the ability to be inset from the wall, enabling clearance for towel bars and other projections. The Glass-to-Fixed Transom Mount Pivot Hinge is used for doors having fixed transoms above them. When placed vertically, either style can be used in movable transom installations.



Cat. No. SRPPH01
Top or Bottom Mount



Cat. No. SRPPH02
Glass-to-Fixed
Transom Mount



Cat. No. SRPPH06
Top Mount with
EZ-Adjust Header



Cat. No. SRPPH07
Top or Bottom Mount
with Attached
Reversible U-Clamp



Cat. No. SRPPH05L
Offset Bracket Wall Mount
Left Hand Mount



Cat. No. SRPPH05R
Offset Bracket Wall Mount
Right Hand Mount

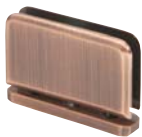
Senior Series Specifications

Glass Thicknesses	1/2" (12 mm)
Construction	Solid Brass
Hinge Swings	Full Rotation
Closing Type	Self-Centering when within 15° of closed position
Cut-Out Required Includes	Gaskets, Screws, and Glass Fabrication Dimensions



Two Hinges	
Maximum Door Weight	145 lbs/66 kg
Maximum Door Width	36"/914 mm

Junior Prima Series Hinges



Cat. No. JRPPH01
Top or Bottom Mount



Cat. No. JRPPH02
Glass-to-Fixed
Transom Mount

Junior Series Specifications

Glass Thicknesses	1/4" (6 mm)
Construction	Solid Brass
Hinge Swings	Full Rotation
Closing Type	Self-Centering when within 15° of closed position
Cut-Out Required Includes	Gaskets, Screws, and Glass Fabrication Dimensions



Two Hinges	
Maximum Door Weight	62 lbs/28 kg
Maximum Door Width	28"/711 mm

Cardiff Series Hinges

Cardiff Series Hinges are designed for use with 3/8" or 5/16" (10 or 8 mm) tempered safety glass, and provide a wide array of application possibilities. Advantages of pivot type hinge include the fact that they carry the majority of the door weight on the bottom hinge, and have the ability to be inset from the wall, enabling clearance for towel bars and other projections.



Cat. No. CAR01
Top or Bottom Mount



Cat. No. CAR02
Glass-to-Fixed
Transom Mount



Cat. No. CAR05L
Offset Bracket Wall Mount
Left Hand Mount



Cat. No. CAR05R
Offset Bracket Wall Mount
Right Hand Mount



Cat. No. CAR07
Top or Bottom Mount with
Attached Reversible U-Clamp

Cardiff and Senior Cardiff Series Specifications

Glass Thicknesses	1/2", 3/8" or 5/16" (12, 10 or 8 mm)
Construction	Solid Brass
Hinge Swings	Full Rotation
Closing Type	Self-Centering when within 15° of closed position
Cut-Out Required Includes	Gaskets, Screws, and Glass Fabrication Dimensions



Maximum Door Weight	100 lbs/45 kg	145 lbs/65 kg
Maximum Door Width	31"/787 mm	36"/914 mm

Cardiff Series

Senior Cardiff Series

Senior Cardiff Series Hinges

Senior Cardiff Series Top and Bottom Mount Pivot Hinges are designed for use with 1/2" (12 mm) thick tempered safety glass. Advantages of the Top and Bottom Mount Pivot Hinges include the fact that they carry the majority of the door weight on the bottom hinge, and have the ability to be inset from the door edge, enabling sufficient clearance for towel bars or other projections. Senior Cardiff Hinges are self-centering, with four strong springs for maximum retention strength.



Cat. No. SRCAR01
Top or Bottom Mount



Cat. No. SRCAR05L
Offset Bracket Wall Mount
Left Hand Mount



Cat. No. SRCAR05R
Offset Bracket Wall Mount
Right Hand Mount

Palermo Series Hinges

The sleek Palermo Series Hinge is unlike any other hinge. The precision lines help shape the unique design of this hinge for 3/8" to 1/2" (10 mm to 12 mm) glass. All fasteners are concealed. The hinge has an adjustable closing position that is accessed when the door is hung. The hinges are self-centering within 30° of the closed position. Using two hinges, a maximum door width of 39" (1 m) and a maximum weight of 110 lb (50 kg) can be achieved.



Cat. No. PAL044
Wall Mount

Palermo Series Specifications

Glass Thicknesses	1/2" or 3/8" (12 or 10 mm) Tempered Safety Glass
Construction	Solid Brass
Hinge Swings	Approximately 90° in and 90° out
Closing Type	Self-Centering when within 15° of closed position
Cut-Out Required Includes	Gaskets, Screws, and Glass Fabrication Dimensions



Cat. No. PAL180
180° Glass-to-Glass

Maximum Door Weight	Two Hinges 140 lbs/64 kg
Maximum Door Width	39"/1 m



Scala Series Hinges

Scala offers a new design in frameless shower door hinges. The body of the hinge remains fixed while the door pivots from a hidden axle. Scala hinges are single-acting and only swing outwards. A stop or strike is required to prevent the door from swinging inward. The Scala hinge works with 5/16" and 3/8" (8 mm and 10 mm) glass. The exterior of the hinge can be customized with a specific design, making it ideal for hospitality applications. Hinges are "handed" (right hand/left hand) when viewed from outside the shower.



Cat. No. SCA044R
Wall Mount Right

Cat. No. SCA044L
Wall Mount Left

Scala Series Specifications

Glass Thicknesses	5/16" or 3/8" (8 or 10 mm) Tempered Safety Glass
Construction	Solid Brass
Hinge Swings	Out Only
Closing Type	Fine Tune Adjustment of up to 1-1/2° in Closed Position
Cut-Out Required Includes	Gaskets, Screws, and Glass Fabrication Dimensions



Cat. No. SCA180R
180° Glass-to-Glass Right

Cat. No. SCA180L
180° Glass-to-Glass Left

Maximum Door Weight	Two Hinges 100 lbs/45 kg
Maximum Door Width	30"/762 mm



CRL | Sliding Door Systems



Deluxe Serenity Series - Polished Stainless

Deluxe Serenity Series Sliding Shower Door System

Our Deluxe Serenity Series Sliding Shower Door System is unique from traditional sliding shower doors. The use of minimal hardware provides a frameless look that gives the enclosure floating appearance. Specially designed roller bearings allow for quiet and easy opening and closing of the door. This unique roller system operates above and below the header bar that spans the top of the enclosure. One sliding and one fixed panel make the 180 Degree Standard Kit beautiful and practical. Units will work with 3/8" or 5/16" (10 or 8 mm) thick tempered glass (not included).



Cat. No. SER90
90 Degree Accessory Kit

Cat. No. SER78 and SER95 Standard 180 Degree Kit Includes

- One - 78-3/4" (2 m) or 95" (2.41 m) Length Header Bar
- Four - Rollers
- One - Stopper
- Two - Track Holder Fittings for Wall
- Two - Track Holder Fittings for Fixed Panel
- One - Thru-Glass Pull
- One - Door Guide
- One - 95" (2.41 m) Clear L-Seal

Deluxe Serenity Series Sliding Shower Door System Kit Components



Cat. No. SERH2
78-3/4" (2 m) Header Bar
Low Profile 1-9/16" (40 mm)
Height



Cat. No. SERNR1
Roller



Cat. No. SERNS1
Stopper



Cat. No. SERAHW2
Track Holder
Fittings for Wall



Cat. No. SERFP2
Track Holder Fittings
for Fixed Panel



Cat. No. SERNHP2
Thru-Glass Pull



Cat. No. SERUG2
Door Guide



Cat. No. DK98L
95" (2489 mm) Clear
L-Seal



Deluxe Serenity Series V-Corner - Polished Stainless

Deluxe Serenity Series V-Corner System

Creating a unique and attractive V-Corner shower enclosure is now easier than ever. Simply purchase two 180 Degree Serenity Series Sliding Systems along with one 90 Degree Double Door Connector Bracket (see below). Combining the two sliding doors in a V-corner allows you to build a beautiful double door sliding enclosure, ideal for smaller bathroom areas. A choice of beautiful and durable polished or brushed stainless steel finishes match most any modern bathroom décor. Matte Black is available on special order. No glass fabrication is required for the Connector Bracket itself.



Cat. No. SERC2
90 Degree Door
Connector Bracket

Purchase two 180 Degree Serenity Series
Sliding Systems (see page 23) along with
90 Degree Door Connector Bracket



Senior Deluxe Serenity Series - Polished Stainless

Senior Deluxe Serenity Series Sliding Door System

Senior Deluxe Serenity Sliding Shower Door System is designed for use with 1/2" (12 mm) thick tempered safety glass (not included). Utilizing many of the attractive and practical features of the Deluxe Serenity, Senior Deluxe Serenity is sure to grab attention with its majestic appearance in an elegant bathroom. The Senior Deluxe Serenity Kit comes with the hardware for installation of a 180 degree door and fixed panel, except U-channel or glass clamps, which are ordered separately. Also purchased separately, our Senior 90 Degree Accessory Kit can be used to construct enclosures having a 90 degree return panel. The Senior Deluxe Serenity Sliding Kit is available in a choice of polished or brushed stainless steel.



Cat. No. SRSER90
90 Degree Accessory Kit

Cat. No. SRSER78
Standard 180 Degree Kit Includes

- One - 78-3/4" (2 m) Length Header Bar
- Four - Rollers
- One - Stopper
- Two - Track Holder Fittings for Wall
- Two - Track Holder Fittings for Fixed Panel
- One - Thru-Glass Pull
- One - Door Guide
- One - 95" (2.41 m) Clear L-Seal

Senior Deluxe Serenity Series Sliding Door System Components



Cat. No. SRSERH2
78-3/4" (2 m) Header Bar
Low Profile 1-9/16" (40 mm)
Height



Cat. No. SRSERR4
Roller



Cat. No. SRSERS4
Stopper



Cat. No. SRSERF4W
Track Holder
Fittings for Wall



Cat. No. SRSERF4FP
Track Holder Fittings
for Fixed Panel



Cat. No. SERNHP2
Thru-Glass Pull



Cat. No. SERDG2
Door Guide



Cat. No. DK98L
95" (2489 mm) Clear
L-Seal



Cambridge Series Two Door Bypass - Brushed Stainless

Cambridge Series Two Door Bypass Sliding Shower Door System

The Cambridge Series Two Door Bypass Sliding Shower Door System utilizes a modern top roller system that features four rollers on each door for ease of sliding. This quiet, smooth sliding system is made of high quality stainless steel, thus ensuring easy opening and closing of the doors. The Cambridge Series is versatile in design, able to adapt to full standing showers or above bathtubs. The Cambridge Series Bypass Sliding Shower Door System accommodates 3/8" or 5/16" (10 or 8 mm) thick tempered safety glass (not included). Offered in polished or brushed stainless steel matte black finish.

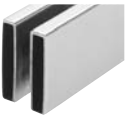


CAM90
90 Degree Accessory Kit

Cat. No. CAM73
Standard 180 Degree Kit Includes

- One - 73" (1854 mm) Length of Header Bar
- Eight - Rollers
- Two - Stoppers
- Two - Track Holder Fittings for the Wall
- One - Bottom Guide
- Two - 40" (1016 mm) Bottom Sweeps With Drip Rail
- Two - 80" (2032 mm) Clear L-Jamb
- Two - 24" (610 mm) Single-Sided Towel Bars
- One - Tool Kit

Cambridge Series Two Door Bypass Sliding Shower Door System Kit Components



Cat. No. CAMH1
73" (1854 mm)
Length of Header Bar



Cat. No. CAMR4
Roller



Cat. No. CAMS1
Stopper



Cat. No. CAMW2
Track Holder
Fittings for the Wall



Cat. No. CAMG1
Bottom Guide



Cat. No. P995WS
Bottom Sweep
with Drip Rail



Cat. No. DK80L
80" (2032 mm) Clear
L-Jamb



Cat. No. BMNW24
Single-Sided Towel Bar



Crescent Series - Brushed Stainless

Crescent Series Sliding Shower Door System

The circular shaped header and the round rollers of the Crescent Series Sliding Door System are the perfect complement to each other. The use of minimal hardware lends itself to the popular modern sliding shower door systems by showing more glass, and less hardware. The high quality rollers ensure quiet door travel, and make the door easy to slide. The Crescent Series Sliding System accommodates 1/2" or 3/8" (12 or 10 mm) thick tempered safety glass (not included), and the system allows that the fixed and sliding panels are reversible for installation as desired. The Crescent Series Sliding Door System is available in a choice of polished stainless steel, brushed stainless steel, or matte black finish.



CRE90

90 Degree Accessory Kit

Cat. No. CRE78

Standard 180 Degree Kit Includes

- One - 78" (1981 mm) Length "I Beam" Header Bar
- Four - Rollers
- One - Stopper
- Two - Wall Mount Fittings
- Two - Track Holder Fittings for Fixed Panel
- One - Bottom Guide
- Two - 40" (1016 mm) Bottom Sweep with Drip Rail
- Two - 80" (2032 mm) Clear L-Jamb

Crescent Series Sliding Shower Door System Kit Components



Cat. No. CREH1
78" (1981 mm) Length
of Header Bar



Cat. No. CRER2
Roller



Cat. No. CRES1
Stopper



Cat. No. CREW1
Wall Mount Fitting



Cat. No. CREF1
Track Holder Fitting
for Fixed Panel



Cat. No. CREG1
Bottom Guide



Cat. No. P995WS
40" Bottom Sweeps
with Drip - 3/8" (10 mm)
Cat. No. P997WS
40" Bottom Sweeps
with Drip - 1/2" (12 mm)



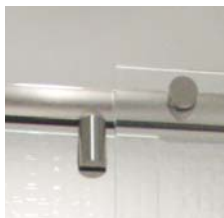
Cat. No. DK80L
80" (2032 mm) Clear
L-Jamb



Hydroslide Series - Chrome

Hydroslide Sliding Shower Door System

Hydroslide Sliding Shower Door Kits are designed for full standing showers or above bathtubs. The Hydroslide System accommodates a wide range of shower designs with fixed glass panels on either end, or both sides at 90 or 180 degrees. The Hydroslide System also accommodates the option of floor-to-near-ceiling glass panels with a sliding door. 180 Degree Hydroslide Sliding Shower Door Kits feature the latest 'all-glass' look. Kits are available in either 60" or 84" (1524 or 2134 mm) widths. Installers can cut the width to size, and height is optional as long as the sliding door glass weighs less than 88 pounds (40 kg). 90 Degree wall-to-glass installations require the 180 Degree Standard Kit, plus the 90 Degree Wall-to-Glass Accessory Kit.



Cat. No. HYDK60
60" 180° Standard Kit

Cat. No. HYDK84
84" 180° Standard Kit

Cat. No. HYDA9
90° Wall-to-Glass
Accessory Kit

Standard 180 Degree Kit Includes

- One – Sliding Glass Door Upper Track
- Two – Rolling Hangers for Sliding Glass Door
- Two – Sliding Glass Door Roller Stops
- One – Sliding Glass Door Floor Guide
- Two – 90 Degree Wall to Upper Track Connector
- Two – 180 Degree Glass to Sliding Track Connector
- One – 36" (914 mm) Half-Round Threshold
- One – 95" (2489 mm) Clear L-Seal

*90 Degree Wall-To-Glass

Accessory Kit consists of:

- One - 90 Degree Glass-to-Sliding Track Connector
- One - 90 Degree Wall-to-Glass Bracket
- *90 Degree Units require that you order one
180 Degree Standard Kit plus one 90 Degree
Wall-to-Wall Accessory Kit

Hydroslide Standard Sliding Shower Door System Kit Components



Cat. No. HYD60
Sliding Glass Door
Upper Track (for 60" Kit)

Cat. No. HYD84
Sliding Glass Door
Upper Track (for 84" Kit)



Cat. No. HYD01
Rolling Hangers for
Sliding Glass Door



Cat. No. HYD02
Sliding Glass Door
Roller Stops



Cat. No. HYD03
Sliding Glass Door
Floor Guide



Cat. No. HYDW90
90 Degree Wall to
Upper Track Connector



Cat. No. HYDG180
180 Degree Glass to
Sliding Track Connector



Cat. No. SDT980
36" (914 mm) Half-Round
Threshold



Cat. No. DK98L
95" (2489 mm) Clear
L-Seal



Bristol Series - Polished Stainless

Bristol Sliding Shower Door System

The Bristol Series Sliding System's use of minimal hardware provides a frameless look that gives the enclosure a floating appearance. Specially designed roller bearings allow for quiet and easy opening and closing of the door. One sliding panel and one fixed panel make the Bristol Series both practical and beautiful.



BR178
180° Standard Kit

Cat. No. BR178 Standard 180 Degree Kit Includes

- One - 78-3/4" (1981 mm) Length Header Bar
- Four - Rollers
- One - Stopper
- Two - Track Holder Fittings for Wall
- One - Thru-Glass Pull
- One - Bottom Door Guide
- Two - 80" (2032 mm) Clear L-Jamb
- Two - Fixed Panel Fittings

Bristol Series Sliding Shower Door System Kit Components



Cat. No. BR1H2
Header Bar



Cat. No. BR1NR1
Roller



Cat. No. BR1NDS1
Door Stop



Cat. No. BR1AHW2
Wall Bracket



Cat. No. BR1FP2
Fixed Panel Fitting



Cat. No. SERNHP2
Thru-Glass Pull



Cat. No. BR1UG2
Door Guide



Cat. No. DK80L
80" (2032 mm) Clear
L-Jamb



Contempo Series - Polished Stainless

Contempo Series Sliding Door System

The Contempo Series "I Beam" Bypass Sliding Shower Door System has the flexibility to be installed either in a full standing shower, or above a bathtub. The Header is clad in polished or brushed stainless steel, or matte black to present an elegant appearance. The Contempo Series has two hangers (four rollers) per door to assure a smooth, gliding opening and closing of the bypassing doors using only fingertip control. The "adjustable height" header allow a wiggle room for installation. The Contempo Series Sliding System accommodates 3/8" or 5/16" (10 or 8 mm) thick tempered safety glass (not included). A 90 Degree Accessory Kit is available for enclosures with a return panel.



Cat. No. CON73 Standard 180 Degree Kit Includes

- One - 73-13/16" (1875 mm) Length "I Beam" Header Bar
- Four - Hangers (Eight Rollers)
- Two - Stoppers
- Two - Track Holder Fittings for the Wall
- One - Bottom Guide
- Two - 95" (2489 mm) Clear L-Seal
- One - 73-13/16" (1875 mm) Threshold

CON73

Standard 180 Degree
Contempo Kit

Contempo Series Sliding Shower Door System Kit Components



Cat. No. CONH1
73-13/16" (1875 mm)
Header Bar



Cat. No. CONR4
Hangers



Cat. No. CONS2
Stoppers



Cat. No. CONW2
Track Holder Fittings



Cat. No. CONG1
Bottom Guide



Cat. No. SDT44
73-13/16" (1875 mm)
Threshold



Cat. No. DK98L
95" (2489 mm) Clear
L-Seal



Clear Space™ Series - Polished Chrome

Clear Space™ Tub and Shower Enclosure System

Clear Space™ is a state-of-the-art shower and bath enclosure system that is as functional as it is beautiful. An industry first elliptical door swing that gets out of the way, creating an open floor space on both sides of the enclosure. Large openings up to 72" (1829 mm) wide can result (based on a double door scenario), as the door projects only 10-1/2" (267 mm) into the enclosure, and 10-1/2" to 16-1/2" (267- 419 mm) out from the enclosure, avoiding sinks, toilets, and shower valves in the open floor space. Natural pivot door operation enhances the user experience, producing door space efficiency, without a header! The Top Door Guide automatically rotates open against the interior wall when the door is operated. Clear Space™ is perfect for assisting physically challenged individuals, because the distance that the door travels toward the wheel chair is drastically reduced, and this is very important when producing wide openings. Natural pivot door operation and assisted opening/closing further enhances ergonomics while ensuring that the door stays put in both positions.



Each Clear Space™ Complete Swinging Kit Includes

- Two – Wall Mount Hinges
- Two – 180° Glass-to-Glass Hinges
- One – Control Arm (Left or Right)
- One – Top Guide

CLSK1

Complete Swinging Kit

Clear Space™ Tub and Shower Enclosure System Kit Components



Cat. No. CLS02
Control Arm
(Left or Right)



Cat. No. CLS01
Top Guide



Cat. No. CLS337
Wall Mount Hinge



Cat. No. CLS181
180° Glass-to-Glass Hinge



Essence Series - Polished Chrome

Essence Series Bottom Rolling Shower

Our Essence Series allows a headerless appearance by utilizing a bottom rolling system that includes an anti-derail/anti-pinch guard feature. The bottom rollers also have an integrated height adjustment for door to vertical jamb alignment. By being completely header-free, a frameless vertical and horizontal appearance is achieved. Smooth and quiet operation of the door is the cornerstone of this bottom rolling unit. At the same time, excellent water management is accomplished at the sill via the bottom track, and vertically with the use of a clear L-shape jamb.



Cat. No. ESS1
Rounded Style



Cat. No. ESS3
Square Style

Basic ESS1 or ESS3 Kits Include the Following

- Two - Bottom Rollers
- One - Spanner Wrench for Roller Adjustment
- One - Top Door Guide
- One - 64" (1.63 m) Bottom Track
- One - 98" (2.49 m) U-Channel
- One - 98" (2.49 m) Plastic L-Seal
- One - SDCEC12 End Cap for Channel
- Two - Shower Door Bumpers
- One - 1/16" (1.6 mm) Neoprene Setting Block

Essence Series Bottom Rolling Shower Specifications

Glass Thickness	1/2" (12 mm) Tempered Safety Glass (Not Included)
Materials	Rollers and Top Guide, Bottom Sliding Track and U-Channel, L-Jamb Stock
Maximum Door Size	Do Not Exceed Either 34" (864 mm) Wide or 127 Pounds (57.6 kg)
Basic Kit Glass Fabrication	Notch Required for Bottom Rollers, Holes Required for Top Guide



Cabo Soft Slide Series - Polished Chrome

Cabo Soft Slide Series

The Cabo Soft Slide Sliding Door System offers the 'Softbrake' Braking System on the door, ensuring smooth operation. 'Softbrake' cushions the opening and closing of the door gently, quietly, and is completely concealed inside the header. 'Softbrake' controls the last 4" (102 mm) of door travel, preventing the glass from impacting the frame or adjacent glass panel. The Cabo Soft Slide Series offers a choice of two clamp cover designs (rounded or square), and is available in five architectural finishes. Each Kit comes complete with a Header, two Top Clamps with Covers, two Wall Mount Brackets, two Top Fixed Glass Fasteners with Covers, and a Bottom Guide.



Cat. No. CABR65
65" (1.65 m)
rounded style

Cat. No. CABR84
84" (2.13 m)
rounded style



Cat. No. CABS65
65" (1.65 m)
square style

Cat. No. CABS84
84" (2.13 m)
square style

Cabo Soft Slide Series Specifications

Glass Thickness	1/2", 3/8", or 5/16" (12, 10, or 8 mm) Tempered Safety Glass (Not Included)
Materials	Aluminum
Maximum Door Weight	176 lbs (80 kg)
Finished Opening Size	Minimum 60" (1.52 m) Wide for 65" (1.65 m) Kit; Minimum 65" (1.65 m) Wide for 84" (2.13 m) Kit
Glass Fabrication	Holes and Notches Required
Includes	Gaskets, Screws, and Glass Fabrication Information



Cottage CK Series - Brushed Nickel

Cottage CK Series

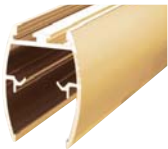
Cottage CK Series Sliders are unique in that they utilize clear polycarbonate side jambs instead of traditional metal side jambs, thus providing an 'all-glass' look. Bolt-Through Top Hangers allow immediate fabrication and installation, with no waiting for messy adhesive to dry. Cottage Series Kits come in Brite Anodized, Brite Gold Anodized, Brushed Nickel, and Oil Rubbed Bronze finishes, with other finishes available on special order.

The top hung stock units include: Header, Top Hangers for 3/8" or 1/4" (10 or 6 mm) glass, Clear Polycarbonate Side Jambs, Bottom Sill, Back-to-Back Knob, 24" (610 mm) Towel Bar, Nylon Rollers, and Bottom Guide. Tempered glass. Since all rollers are overhead, the Bottom Sill and Clear Side Jambs are uncluttered, making cleaning easy. Available in up to six stock sizes. Extrusions, Bottom Guides, Hardware Packages, and other accessories may be ordered separately.

Cat. No. CK386072
For 3/8" (10 mm) Glass

Cat. No. CK146072
For 1/4" (6 mm) Glass

Cottage CK Series Sliding Shower Door System Kit Includes



Cat. No. DK61
One - Header



Cat. No. DK63
One - Bottom Sill



Cat. No. SDKP112
One - Back-to-Back Knob
(With Plastic Sleeve)



Cat. No. DK67
Four - Top Hangers for
1/4" (6 mm) Glass or

Cat. No. DK66
Four - Top Hangers for
3/8" (10 mm) Glass



Cat. No. DK98L
Two - Clear Polycarbonate
Jambs (Tape Pre-Applied
at Factory)



Cat. No. DK6914
One - Bottom Guide
1/4" (6 mm)

Cat. No. DK6938
One - Bottom Guide
3/8" (10 mm)



Cat. No. BMNW24
One - 24" (610 mm) Towel Bar



Cottage DK Series - Brushed Nickel

Cottage DK Series

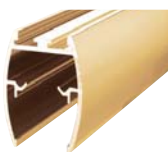
Cottage DK Series Sliders utilize metal side jambs for a traditional frameless sliding shower door appearance. Bolt-Through Top Hangers allow immediate fabrication and installation, with no waiting for messy adhesive to dry. Our DK Series Kits come in Brite Anodized, Brite Gold Anodized, Brushed Nickel, and Oil Rubbed Bronze finishes, with other finishes available on special order.

The top hung stock units include: Extruded Aluminum Header, Side Jambs, and Bottom Sill; Top Hangers for 3/8" or 1/4" (10 or 6 mm) glass, Back-to-Back Knob, 24" (610 mm) Towel Bar, Nylon Rollers, Bottom Guide, Screws, and Bumpers. Tempered glass and silicone sealant complete the installation. Since all rollers are overhead, the Bottom Sill and Side Jambs are uncluttered, making cleaning easy. They are available in up to six stock sizes. Extrusions, Bottom Guides, Hardware Packages, and other accessories may be ordered separately. Custom units are available for special installations.

Cat. No. DK386072
For 3/8" (10 mm) Glass

Cat. No. DK146072
For 1/4" (6 mm) Glass

Cottage DK Series Sliding Shower Door System Kit Includes



Cat. No. DK61
One - Header



Cat. No. DK63
One - Bottom Sill

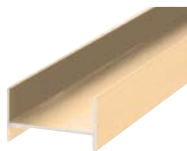


Cat. No. SDKP112
One - Back-to-Back Knob
(With Plastic Sleeve)



Cat. No. DK67
Four - Top Hangers for
1/4" (6 mm) Glass or

Cat. No. DK66
Four - Top Hangers for
3/8" (10 mm) Glass



Cat. No. DK65
Two - Metal Side Jambs



Cat. No. DK6914
One - Bottom Guide
1/4" (6 mm)

Cat. No. DK6938
One - Bottom Guide
3/8" (10 mm)



Cat. No. BMNW24
One - 24" (610 mm) Towel Bar

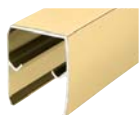
Suite EK Series

The Suite EK Series Frameless Sliding Shower Door Kit for 1/4" (6 mm) thick tempered safety glass provides an alternative design and mounting method to our Deluxe Cottage Series Sliders. The Hanger Bracket is a cost-reducing device, as it clamps directly onto the glass and eliminates the need for drilling holes (set screws only). The brackets allow for smooth, quiet operation and long service life at a lower cost. The specially designed Header is only 2-9/16" (65 mm) tall. This reduces the visibility of the top metal, and allows more of the frameless, 'all-glass' look. It is reversible so the customer has the choice of using the gently curved side, or the flat side with top and bottom edge bevels. The Suite EK Series is available exclusively with metal side jambs, does not offer the clear jamb system, and is available only for inline units. Kits with fixed panels are not available. Two popular stock sizes are available: 60" W x 60" H (1.52 m x 1.52 m) and 60" W x 72" H (1.52 m x 1.83 m). The Suite EK Series comes in four popular finishes. Custom finishes are available upon request. Glass is not included in any Suite EK Series Kit.

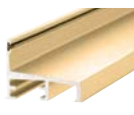
Cat. No. EK146060
60" x 60" (1.52 m x 1.52 m)

Cat. No. EK146072
60" x 72" (1.52 m x 1.83 m)

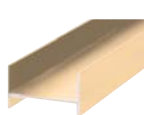
Suite EK Series Sliding Shower Door System Kit Includes



One - Reversible Header



One - Bottom Sill



Two - Side Jamb



Four - 'No Drill' Top Hangers



One - Back-to-Back Knob
(With Plastic Sleeve)



One - Bottom Guide



One - 24" (610 mm) Towel Bar



MK Series - Brite Anodized

MK Series

The MK Series Frameless Slider Kits provide all the extrusions (Header, Top Hanger Rails, Bottom Track, and Side Jamb) necessary for installation, as well as a Towel Bar, Knob, Rollers, Guide, and Installation Hardware. The silicone sealant is supplied by the installer. The easy-to-clean Bottom Track utilizes a center-mounted guide. Available in custom sizes, configurations, and finishes on special order.

Cat. No. S386072
MK Slider Kits for
3/8" (10 mm) Glass

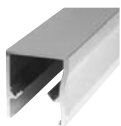
Cat. No. S146072
MK Slider Kits for
1/4" (6 mm) Glass

MK Series Specifications

Materials	Extrusions (Aluminum); Towel Bar and Knob (Solid Aluminum)
For Glass Thickness	3/8" or 1/4" (10 or 6 mm) - Glass not included in Kit
Stock Kits Include	Aluminum Extrusions, 24" (610 mm) Towel Bar, Knob, Hardware Package
Glass Fabrication	Towel Bar - Two 1/2" (12 mm) Diameter Holes 24" (610 mm) Center-to-Center; Knob - One 1/2" (12 mm) Diameter Hole

MK Series Replacement Parts and Accessories

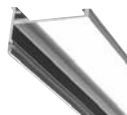
Materials	Extrusions (Aluminum); Towel Bar and Knob (Solid Aluminum)
For Glass Thickness	3/8" or 1/4" (10 or 6 mm) - Glass not included in Kit
Stock Kits Include	Aluminum Extrusions, 24" (610 mm) Towel Bar, Knob, Hardware Package
Glass Fabrication	Towel Bar - Two 1/2" (12 mm) Diameter Holes 24" (610 mm) Center-to-Center; Knob - One 1/2" (12 mm) Diameter Hole



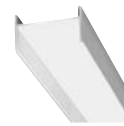
Header
3/8" (10 mm) or
1/4" (6 mm)



Top Hanger Rail
3/8" (10 mm) or
1/4" (6 mm)



Bottom Track
3/8" or 1/4" (10 or 6 mm)



Side Jamb
3/8" or 1/4" (10 or 6 mm)

CRL | Pull Handles



Ladder Series Pull Handle - Brushed Nickel

Pull Handles

CRL offers a variety of pull handles in numerous finishes. Each one is constructed of the finest materials. Custom designs and finishes are also available.



Square Ladder Pull

Cat. No. SLP6X6
6" (152 mm)

Cat. No. SLP8X8
8" (203 mm)



BM Series

Cat. No. BM6X6
6" (152 mm)

Cat. No. BM8X8
8" (203 mm)



BM Series - No Washer

Cat. No. BMNW6X6
6" (152 mm)

Cat. No. BMNW8X8
8" (203 mm)



SQ Series

Cat. No. SQ6X6
6" (152 mm)

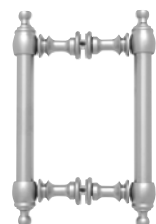
Cat. No. SQ8X8
8" (203 mm)



MT Series

Cat. No. MT6X6
6" (152 mm)

Cat. No. MT8X8
8" (203 mm)



Colonial Series

Cat. No. COL6X6
6" (152 mm)

Cat. No. COL8X8
8" (203 mm)



Ladder Series

Cat. No. LP6X6
6" (152 mm)

Cat. No. LP8X8
8" (203 mm)

Cat. No. LP24
24" (305 mm)

Cat. No. LP36
36" (610 mm)

Cat. No. LP48
48" (914 mm)



Victorian Series

Cat. No. VIC6X6
6" (152 mm)

Cat. No. VIC8X8
8" (203 mm)

Pull Handles



Crescent Style
Cat. No. CSH6X6
 6" (152 mm)
Cat. No. CSH8X8
 8" (203 mm)



Regular Style
Cat. No. SDPR6
 6" (152 mm)



Circular Style
Cat. No. SDPC575
 5-1/8" (130 mm)



Sculptured Style
Cat. No. SSDP6
 6" (152 mm)
Cat. No. CQ10X10
 10" (254 mm)



OR Series
Cat. No. OR6X6
 6" (152 mm)
Cat. No. OR8X8
 8" (203 mm)



RM Series
Cat. No. RM6X6
 6" (152 mm)
Cat. No. RM8X8
 8" (203 mm)



Solid Brass - No Washer
Cat. No. BPD6
 6" (152 mm)
Cat. No. BPD8
 8" (203 mm)



Solid Brass with Washer
Cat. No. SPH6
 6" (152 mm)
Cat. No. SPH8
 8" (203 mm)



**Solid Brass - Single Sided
 No Washer**
Cat. No. BPS6
 6" (152 mm)
Cat. No. BPS8
 8" (203 mm)



**Solid Brass - Single Sided
 with Washer**
Cat. No. SSP6
 6" (152 mm)
Cat. No. SSP8
 8" (203 mm)



Solid Brass - 1" Diameter
Cat. No. SBP81
 8" (203 mm)

Pull Handle Replacement Parts



Cat. No. 30WK
Washer Kit



Cat. No. 30SK
Two End Caps
with Threaded Rod



Cat. No. SQMW10
Metal Washers
for SQ Pulls



Cat. No. SSBM10
Set Screws



Cat. No. BMSK
Washer/Stud Set



Cat. No. BMNWSK
Stud Kit



Cat. No. SQSK
Washers/Stud Kit
for SQ Series



Cat. No. COLSKLP
Low Profile Stud Kit
for Cologne Series



Cat. No. HW058
3/4" Clear Hard Washer



Cat. No. HW059
1/2" O.D. x 1/4" I.D.



Cat. No. DH114GASK
1-1/4" Clear Gasket

Pull Handle Specifications

Material	Brass
Glass Thickness Range	1/2", 3/8", 5/16", or 1/4" (12, 10, 8, or 6 mm)
Hole Diameter Required	1/2" (12 mm) or 5/8" (18 mm)
Center-to-Center Hole Spacing	Varies



Knobs

Knobs can be back-to-back or single-sided. Select from brass, crystal or glass construction.



Traditional Style
Cat. No. SDK100
 Back-to-Back Knob
Cat. No. SDK200
 Single Sided Knob



Contemporary Style
Cat. No. SDK106
 Back-to-Back Knob
Cat. No. SDK206
 Single Sided Knob



Flush Ring Style
Cat. No. SDK118
 Back-to-Back Knob



Junior Contemporary
Cat. No. SDK107
 Back-to-Back Knob



Protruding Ring Style
Cat. No. SDK643
 Back-to-Back Knob



Square Style
Cat. No. SDK160
 Back-to-Back Knob



Single Sided Square
Cat. No. SDK270
 For Mounting on Single-Sided SQ Towel Bars



Ball Style
Cat. No. SDK075
 Back-to-Back Knob



Flair Style
Cat. No. SDK053
 Back-to-Back Knob



Ribbed Bow Tie
Cat. No. SDK046
 Back-to-Back Knob



Standard Bow Tie
Cat. No. SDK109
 Back-to-Back Knob



Crescent Grip
Cat. No. SDK140
 Back-to-Back Knob



Mini Bulb Style
Cat. No. SDK19MK
 Single Sided Knob



Solid Glass Knob
Cat. No. SDK061
 Single Sided Knob



Paddle Style
Cat. No. SDK180
 Back-to-Back Knob



Glass Style
Cat. No. SDK410CR
 Back-to-Back Knob



Crystal Knobs
Cat. No. SDK406CR
 Contemporary
 Single Sided Knob
Cat. No. SDK400CR
 Traditional
 Single Sided Knob



Euro Style
Cat. No. SDK120
 Back-to-Back Knob



Knob Latches
Cat. No. LAT001
 180° Model with J Hook
Cat. No. LAT135
 135° Model with J Hook



Cylinder Style
Cat. No. SDK112
 Back-to-Back Knob
Cat. No. SDKP112
 Back-to-Back Knob
 with Plastic Sleeve
Cat. No. SDK212
 Single Sided Knob

Cat. No. SDKP212
 Single Sided Knob
 with Plastic Sleeve

CRL | Towel Bars



MT Series Round Tubing Mitered Corner Towel Bars - Polished Chrome

Towel Bars

BM Series Single-Sided Towel Bar with Metal Washers



Cat. No. BM12

12" (305 mm) Towel Bar

Cat. No. BM18

18" (457 mm) Towel Bar

Cat. No. BM20

20" (508 mm) Towel Bar

Cat. No. BM24

24" (610 mm) Towel Bar

Cat. No. BM26

26" (660 mm) Towel Bar

Cat. No. BM27

27" (686 mm) Towel Bar

Cat. No. BM28

28" (711 mm) Towel Bar

Cat. No. BM30

30" (762 mm) Towel Bar

BM Series Single-Sided Towel Bar without Metal Washers



Cat. No. BMNW12

12" (305 mm) Towel Bar

Cat. No. BMNW18

18" (457 mm) Towel Bar

Cat. No. BMNW20

20" (508 mm) Towel Bar

Cat. No. BMNW24

24" (610 mm) Towel Bar

Cat. No. BMNW26

26" (660 mm) Towel Bar

Cat. No. BMNW27

27" (686 mm) Towel Bar

Cat. No. BMNW28

28" (711 mm) Towel Bar

Cat. No. BMNW30

30" (762 mm) Towel Bar

BM Series Back-to-Back Towel Bar with Metal Washers



Cat. No. BM12X12

12" (305 mm) Towel Bar

Cat. No. BM18X18

18" (457 mm) Towel Bar

Cat. No. BM20X20

20" (508 mm) Towel Bar

Cat. No. BM24X24

24" (610 mm) Towel Bar

Cat. No. BM30X30

30" (762 mm) Towel Bar

BM Series Back-to-Back Towel Bar without Metal Washers



Cat. No. BMNW12X12

12" (305 mm) Towel Bar

Cat. No. BMNW18X18

18" (457 mm) Towel Bar

Cat. No. BMNW24X24

24" (610 mm) Towel Bar

Cat. No. BMNW30X30

30" (762 mm) Towel Bar

Towel Bars

MT Series Round Tubing Mitered Corner Single-Sided Towel Bar



Cat. No. MT18
18" (457 mm) Towel Bar

Cat. No. MT24
24" (610 mm) Towel Bar

MT Series Round Tubing Mitered Corner Back-to-Back Towel Bar



Cat. No. MT18X18
18" (457 mm) Towel Bar

Cat. No. MT24X24
24" (610 mm) Towel Bar

SQ Series Square Corner Single-Sided Towel Bar



Cat. No. SQ18
18" (457 mm) Towel Bar

Cat. No. SQ24
24" (610 mm) Towel Bar

SQ Series Square Corner Back-to-Back Towel Bar



Cat. No. SQ18X18
18" (457 mm) Towel Bar

Cat. No. SQ24X24
24" (610 mm) Towel Bar

SD Series Single-Sided Towel Bar



Cat. No. SDTBS12
12" (305 mm) Towel Bar
Cat. No. SDTBS18
18" (457 mm) Towel Bar

Cat. No. SDTBS24
24" (610 mm) Towel Bar

SD Series Back-to-Back Towel Bar



Cat. No. SDTB12X12
12" (305 mm) Towel Bar
Cat. No. SDTB18X18
18" (457 mm) Towel Bar

Cat. No. SDTB24X24
24" (610 mm) Towel Bar

Towel Bars

OR Series Oval/Round Single-Sided Towel Bar



Cat. No. OR18
18" (457 mm) Towel Bar

Cat. No. OR24
24" (610 mm) Towel Bar

OR Series Oval/Round Back-to-Back Towel Bar



Cat. No. OR18X18
18" (457 mm) Towel Bar

Cat. No. OR24X24
24" (610 mm) Towel Bar

Crescent Series Single-Sided Towel Bar



Cat. No. CSH18
18" (457 mm) Towel Bar

Cat. No. CSH24
24" (610 mm) Towel Bar

Crescent Series Back-to-Back Towel Bar



Cat. No. CSH18X18
18" (457 mm) Towel Bar

Cat. No. CSH24X24
24" (610 mm) Towel Bar

Colonial Series Single-Sided Towel Bar



Cat. No. COL18
18" (457 mm) Towel Bar

Cat. No. COL24
24" (610 mm) Towel Bar

Colonial Series Back-to-Back Towel Bar



Cat. No. COL18X18
18" (457 mm) Towel Bar

Cat. No. COL24X24
24" (610 mm) Towel Bar

Towel Bars

Ladder Series Single-Sided Towel Bar



Cat. No. LTB18
18" (457 mm) Towel Bar

Cat. No. LTB24
24" (610 mm) Towel Bar

Ladder Series Back-to-Back Towel Bar



Cat. No. LTB18X18
18" (457 mm) Towel Bar

Cat. No. LTB24X24
24" (610 mm) Towel Bar

Victorian Series Single-Sided Towel Bar



Cat. No. VIC18
18" (457 mm) Towel Bar

Cat. No. VIC24
24" (610 mm) Towel Bar

Victorian Series Back-to-Back Towel Bar



Cat. No. VIC18X18
18" (457 mm) Towel Bar

Cat. No. VIC24X24
24" (610 mm) Towel Bar



BM Series Single-Sided with Metal Washers - Matte Black

CRL | Handle / Towel Bar Combinations



Handle/Towel Bar Combinations

BM Series Pull Handle/Towel Bar Combination with Washers



Cat. No. BM6X12

6" (152 mm) Pull/
12" (305 mm) Towel Bar

Cat. No. BM6X18

6" (152 mm) Pull/
18" (457 mm) Towel Bar

Cat. No. BM6X22

6" (152 mm) Pull/
22" (559 mm) Towel Bar

Cat. No. BM6X24

6" (152 mm) Pull/
24" (610 mm) Towel Bar

Cat. No. BM8X18

8" (203 mm) Pull/
18" (457 mm) Towel Bar

Cat. No. BM8X20

8" (203 mm) Pull /
20" (508 mm) Towel Bar

Cat. No. BM8X22

8" (203 mm) Pull /
22" (559 mm) Towel Bar

Cat. No. BM8X24

8" (203 mm) Pull /
24" (610 mm) Towel Bar

Cat. No. BM12X24

12" (305 mm) Pull /
24" (610 mm) Towel Bar

BM Series Pull Handle/Towel Bar Combination without Washers



Cat. No. BMNW6X12

6" (152 mm) Pull/
12" (305 mm) Towel Bar

Cat. No. BMNW6X18

6" (152 mm) Pull /
18" (457 mm) Towel Bar

Cat. No. BMNW6X22

6" (152 mm) Pull/
22" (559 mm) Towel Bar

Cat. No. BMNW6X24

6" (152 mm) Pull/
24" (610 mm) Towel Bar

Cat. No. BMNW8X18

8" (203 mm) Pull /
18" (457 mm) Towel Bar

Cat. No. BMNW8X22

8" (203 mm) Pull /
22" (559 mm) Towel Bar

Cat. No. BMNW8X24

8" (203 mm) Pull /
24" (610 mm) Towel Bar

Cat. No. BMNW12X24

12" (305 mm) Pull /
24" (610 mm) Towel Bar

Ladder Series Pull Handle/Towel Bar Combination Set



Cat. No. LTB6X18

6" (152 mm) Pull/
18" (457 mm) Towel Bar

Cat. No. LTB6X24

6" (152 mm) Pull/
24" (610 mm) Towel Bar

Cat. No. LTB8X18

8" (203 mm) Pull/
18" (457 mm) Towel Bar

Cat. No. LTB8X24

8" (203 mm) Pull /
24" (610 mm) Towel Bar

SD Series Tubular Brass Pull Handle/Towel Bar Combination Set



Cat. No. SDP6TB12

6" (152 mm) Pull/
12" (305 mm) Towel Bar

Cat. No. SDP6TB18

6" (152 mm) Pull/
18" (457 mm) Towel Bar

Cat. No. SDP6TB24

6" (152 mm) Pull/
24" (610 mm) Towel Bar

Cat. No. SDP12TB24

12" (305 mm) Pull /
24" (610 mm) Towel Bar

Handle/Towel Bar Combinations

Colonial Series Pull Handle/Towel Bar Combination Set



Cat. No. COL6X18
6" (152 mm) Pull/
18" (457 mm) Towel Bar

Cat. No. COL6X24
6" (152 mm) Pull/
24" (610 mm) Towel Bar

Victorian Series Pull Handle/Towel Bar Combination Set



Cat. No. V1C6X18
6" (152 mm) Pull/
18" (457 mm) Towel Bar

Cat. No. V1C6X24
6" (152 mm) Pull/
24" (610 mm) Towel Bar

Cat. No. V1C8X18
8" (203 mm) Pull /
18" (457 mm) Towel Bar

Cat. No. V1C8X24
8" (203 mm) Pull /
24" (610 mm) Towel Bar

SQ Series Square Corner Pull Handle/Towel Bar Combination Set



Cat. No. SQ6X18
6" (152 mm) Pull/
18" (457 mm) Towel Bar

Cat. No. SQ6X24
6" (152 mm) Pull/
24" (610 mm) Towel Bar

Cat. No. SQ8X18
8" (203 mm) Pull /
18" (457 mm) Towel Bar

Cat. No. SQ8X24
8" (203 mm) Pull /
24" (610 mm) Towel Bar

MT Series Round Tubing With Mitered Corners Pull Handle/Towel Bar Combination Set



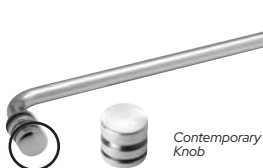
Cat. No. MT6X18
6" (152 mm) Pull/
18" (457 mm) Towel Bar

Cat. No. MT6X24
6" (152 mm) Pull/
24" (610 mm) Towel Bar

Cat. No. MT8X18
8" (203 mm) Pull /
18" (457 mm) Towel Bar

Cat. No. MT8X24
8" (203 mm) Pull /
24" (610 mm) Towel Bar

Towel Bar/Knob Combinations



Cat. No. TBCC18
18" (457 mm) Towel Bar
with Knob

Cat. No. TBCC24
24" (610 mm) Towel Bar
with Knob



Cat. No. TBCT18
18" (457 mm) Towel Bar
with Knob

Cat. No. TBCT24
24" (610 mm) Towel Bar
with Knob

Handle/Towel Bar Combinations

Wall Mount Towel Bar



Cat. No. WTB12
12" (305 mm) Towel Bar

Wall Mount Towel Bar



Cat. No. WTB18
18" (457 mm) Towel Bar

Wall Mount Towel Bar



Cat. No. WTB24
24" (610 mm) Towel Bar

Acrylic Back-to-Back Towel Bar



Cat. No. CAP6X6
6" (152 mm)
Back-to-Back Pull Handle

Cat. No. CAP8X8
8" (203 mm)
Back-to-Back Pull Handle

CRL | Grab Bars



Straight Round Grab Bar - Polished Stainless

Grab Bars

Designer Grab Bars 1-1/4" (35 mm) Diameter



Cat. No. GBA18
18" Straight
Round Grab Bar

Cat. No. GBA24
24" Straight
Round Grab Bar



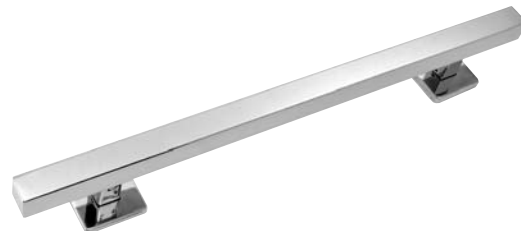
Cat. No. GBB18
18" Mitered
Round Grab Bar

Cat. No. GBB24
24" Mitered
Round Grab Bar



Cat. No. GBC18
18" "S"
Round Grab Bar

Cat. No. GBC24
24" "S"
Round Grab Bar



Cat. No. GBD18
18" Straight
Square Grab Bar

Cat. No. GBD24
24" Straight
Square Grab Bar



Cat. No. GBE18
18" Mitered
Square Grab Bar

Cat. No. GBE24
24" Mitered
Square Grab Bar



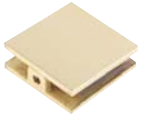
Cat. No. GBF18
18" "S"
Square Grab Bar

Cat. No. GBF24
24" "S"
Square Grab Bar

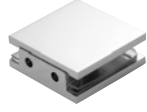
CRL | Glass Clamps, Brackets and U-Channels



Square Style Heavy-Duty Glass Clamps



Cat. No. SCU4
Wall Mount Clamp
(Hole-In-Glass)



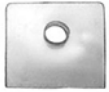
Cat. No. SGCUI
Wall Mount Clamp
(Notch-In-Glass)



Cat. No. SGC037
Fixed Panel Clamp
(with Small Leg)



Cat. No. SGC039
Fixed Panel Clamp
(with Large Leg)



Cat. No. SCU4G
Replacement Gasket
for Hole in Glass



Cat. No. SGCUIG
Replacement Gasket
for Notch in Glass



Cat. No. SGC180
180° Glass-to-Glass



Cat. No. SGC182
"Y" Inline Glass



Cat. No. SGC90
90° Glass-to-Glass



Cat. No. SGC0F90
90° Glass-to-Glass
"Open Face"



Cat. No. SGC135
135° Glass-to-Glass



Cat. No. SGC186
Wall Mount
Movable Transom

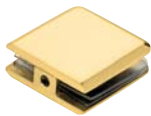


Cat. No. SGC188
180° Glass-to-Glass
Movable Transom



Cat. No. SGC90T
90° Glass-to-Glass
"T" Junction

Beveled Style Heavy-Duty Glass Clamps



Cat. No. BCU4
Wall Mount Clamp
(Hole-In-Glass)



Cat. No. BGCUI1
Wall Mount Clamp
(Notch-In-Glass)



Cat. No. BGC037
Fixed Panel Clamp
(with Small Leg)



Cat. No. BGC039
Fixed Panel Clamp
(with Large Leg)



Cat. No. BCU4G
Replacement Gasket
for Hole in Glass



Cat. No. BGCUIG
Replacement Gasket
for Notch in Glass



Cat. No. BGC182
"Y" Inline Glass



Cat. No. BGC180
180° Glass-to-Glass



Cat. No. BGC135
135° Glass-to-Glass



Cat. No. BGC90
90° Glass-to-Glass



Cat. No. BGC186
Wall Mount
Movable Transom



Cat. No. BGC188
180° Glass-to-Glass
Movable Transom



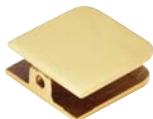
Cat. No. EST111
90° Glass-to-Glass
"Open Face"



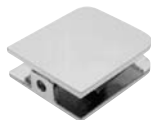
Cat. No. BGC90T
90° Glass-to-Glass
"T" Junction

Traditional Glass Clamps

Traditional Glass Clamps are designed to secure glass panels in contemporary shower enclosures. They assist in maintaining the frameless appearance, and provide a clean looking alternative to U-Channels. All Traditional Clamps feature solid brass construction and a variety of finishes to match our complete line of Shower Door Hinges. Appropriate mounting screws and one set of clear gaskets are included with each Clamp. Extra Cat. No. UCG77 Clear Gaskets (2 per pack) may be ordered separately.



Cat. No. UC77
Standard Fixed Panel
U-Clamp



Cat. No. UC79
Oversized Fixed Panel
U-Clamp



Cat. No. GCB90
Standard
90° Flange Clamp



Cat. No. GCB91
Oversized
90° Flange Clamp



Cat. No. GCB135
Standard
135° Glass Clamp



Cat. No. GCB180
Standard
180° Glass Clamp



Cat. No. GCB184
180° Double Stud
Glass Clamp



Cat. No. GCB182
180° Split Face and
"Y" Inline Clamp

Adjustable Glass Clamps

Solid brass Adjustable Glass Clamps are designed to secure glass panels in contemporary shower enclosures. They assist in maintaining the frameless appearance, and provide a clean-looking alternative when a wall is not at 90° to the fixed panel, or the glass-to-glass application is not a standard angle. This range of glass clamps can accommodate 1/2", 3/8", or 5/16" (12, 10, or 8 mm) glass.



Cat. No. ADJ037
Adjustable
Wall Mount Clamp



Cat. No. ADJ180
Adjustable
Glass-to-Glass Clamp



Cat. No. ADJSQ037
Adjustable Square
Wall Mount Clamp



Cat. No. ADJSQ180
Adjustable Square
Glass-to-Glass Clamp



Cat. No. ADJBEV037
Adjustable Beveled
Wall Mount Clamp



Cat. No. ADJBEV180
Adjustable Beveled
Glass-to-Glass Clamp

Glass Brackets

Wall Mount and 90° Glass-to-Glass Brackets match the look of many of our most popular hinge series. Solid brass brackets come with gaskets; wall mount brackets have gaskets and mounting screws.



Cat. No. GE90S
Geneva
Wall Bracket



Cat. No. GE090
Geneva
90° Glass-to-Glass



Cat. No. GE90SCP
Geneva Cover Plates
for GES Clamp



Cat. No. ME90S
Melbourne
Wall Bracket



Cat. No. P190S
Pinnacle
Wall Bracket



Cat. No. P1090
Pinnacle
90° Glass-to-Glass



Cat. No. R090S
Roman
Wall Mount

“Sleeve Over” Glass Clamps

“Sleeve Over” Glass Clamps provide a mechanical fastener to assist with the shear forces placed on the glass panels. They also hold the glass panels in position while the applied silicone sealant in the joint cures. Clamps are secured in place by nylon tipped Allen set screws.



Cat. No. SOGC37L
Left Hand
Wall Mount Clamp



Cat. No. SOGC37R
Right Hand
Wall Mount Clamp



Cat. No. SOGC01
Ceiling Mount Clamp



Cat. No. SOGC91
Adjustable
90° to 180° Clamp



Cat. No. SOGC90
90° Clamp



Cat. No. SOGC135
135° Clamp



Cat. No. SOGCT90
90° Clamp
“T” Junction

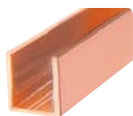
U-Channels

Fixed Panel Regular and Deep U-Channels are used to securing fixed panels of tempered glass to the wall, ceiling or floor. Widths suitable for 3/8" or 1/2" (10 or 12 mm) glass are available in each style, and are individually wrapped to protect the finish.

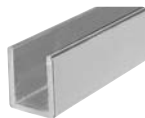
Fixed Panel Deep U-Channel



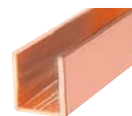
Cat. No. SDCD38
95" (2.41 m) Stock Length
for 3/8" (10 mm) glass



Cat. No. SDCD12
95" (2.41 m) Stock Length
for 1/2" (12 mm) glass



Cat. No. SDCD3812
144" (3.65 m) Stock Length
for 3/8" (10 mm) glass



Cat. No. SDCD1212
144" (3.65 m) Stock Length
for 1/2" (12 mm) glass

Fixed Panel Regular U-Channel



Cat. No. SDCR38
95" (2.41 m) Stock Length
for 3/8" (10 mm) glass



Cat. No. SDCR12
95" (2.41 m) Stock Length
for 1/2" (12 mm) glass



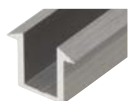
Cat. No. SDCEC38
End Cap
for 3/8" (10 mm) glass



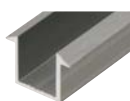
Cat. No. SDCEC12
End Cap
for 1/2" (12 mm) glass

U-Channel End Caps

U-Channel for Recessed Applications



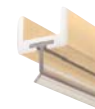
Cat. No. SDCF38
95" (2.41 m) Stock Length
for 3/8" (10 mm) glass



Cat. No. SDCF12
95" (2.41 m) Stock Length
for 1/2" (12 mm) glass



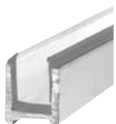
Cat. No. SDW38
95" (2.41 m) Stock Length
for 3/8" (10 mm) glass



Cat. No. SDW12
95" (2.41 m) Stock Length
for 1/2" (12 mm) glass

Shower Door U-Channel Wipe for Door Bottom

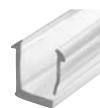
Dry Glaze U-Channel with Vinyls



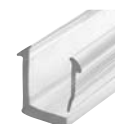
Cat. No. DUC38
95" (2.41 m) Stock Length
for 3/8" (10 mm) glass



Cat. No. SDCEC12
End Cap



Cat. No. FV4DUC
3/8" Flexible Replacement
95" (2.41 m) Vinyl



Cat. No. FV8DUC
5/16" Flexible Replacement
95" (2.41 m) Vinyl

Cat. No. DUC516
95" (2.41 m) Stock Length
for 5/16" (8 mm) glass

Cat. No. RV4DUC
3/8" Rigid Replacement
95" (2.41 m) Vinyl

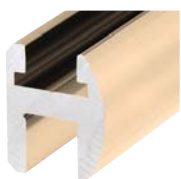
Cat. No. RV8DUC
5/16" Rigid Replacement
95" (2.41 m) Vinyl



Deluxe Shower Door Headers

The Deluxe Shower Header Kit provides additional support and a level of safety while securing glass panels not reaching the ceiling. Deluxe Header Kits are designed to allow installers to do in-house fabrication using a selection of component parts. Sold in 66", 98" or 144" (1.67, 2.49 or 3.65 m) lengths, each header extrusion has a narrow 1-1/4" (32 mm) face to minimize the visible sight line. 90°, 135° or adjustable corners are sold separately for angled installations. BWB2 Brass Wall Brackets are included in each kit.

Deluxe Shower Door Header Kits



SDH660
66" SDH Series Flat/Round



SQH980
95" SQH Series Flat/Flat

SDH980
95" SDH Series Flat/Round

SDH144
144" SDH Series Flat/Round

Each Deluxe Header Kit Contains:

- 1 - 66", 95" or 144" (1.67, 2.49, or 3.65 m) piece of Header Extrusion
- 1 - 36" (914 mm) piece of SIF360 Snap-In Filler for door pocket
- 1 - 95" length of HV380 Vinyl for 3/8" (10 mm) thick glass, and 95" length of HV516 Vinyl for 5/16" (8 mm) thick glass. Vinyl not required for 1/2" (12 mm) thick glass as a tight fit already exists.

Deluxe Header Kit Accessories



Cat. No. HV380
Header Vinyl for
3/8" (10 mm) Glass



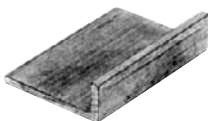
Cat. No. HV516
Header Vinyl for
5/16" (8 mm) Glass



Cat. No. BHC90
90 Degree
Brass Header Corner



Cat. No. BHC135
135 Degree
Brass Header Corner



Cat. No. SHB225
2-1/4" (57 mm)
Aluminum Blank Wall
Mounting Bracket



Cat. No. BWB2
Brass Wall
Mounting Brackets



Cat. No. HAB01
Adapter Block



Cat. No. SRHAB01
Senior Adapter Block



EZ-Adjust Header - Brushed Nickel

EZ-Adjust Shower Door Header

The EZ-Adjust Shower Door Header Kit provides a safe and beautiful frameless shower installation by securing enclosures that do not reach the ceiling. The EZ-Adjust System allows adjustability after installation in that the hinge (PPH06 or SRPPH06 only) can be moved left and right as desired. No drilling through the Header is required for an adaptor block if using Prima Hinge Model PPH06 or Senior Prima Hinge Model SRPPH06, due to a built-in adaptation to the hinges. A choice of 98" and 144" stock lengths can be cut as desired.

EZ-Adjust Shower Door Header Kit



EHK98

95" (2.49 m) Kit

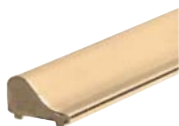
EHK144

144" (3.66 m) Kit

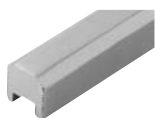
Each EZ-Adjust Header Kit Contains

- 1 - 95" or 144" (2.41 or 3.66 m) Length of Header Extrusion
- 1 - 36" (914 mm) EHF360 Snap-In Filler Insert for Door Pocket
- 1 - BWB2 Deluxe Wall Mount Bracket Kit (Two Brackets Per Pack)
- 1 - V4EHK 95" Length of 5/16" and 3/8" (8 and 10 mm) Clear Vinyl.
Vinyl is not required for 1/2" (12 mm) thick glass.

Shower Door Thresholds



Cat. No. S1L001
Tapered Style



Cat. No. WBCHSQ
Square Style



Cat. No. SDT980
Half Round Style



Cat. No. WBCH
Half Round Style



Cat. No. SDT440
Square Style

CRL | Support Bars



Glass-to-Glass Support Bar - Polished Chrome

Support Bars

Fixed Panel Support Bars stabilize fixed panels of tempered glass in enclosures that do not go all the way up to the ceiling. Nylon-tipped set screws secure the glass and prevent glass-to-metal contact.

Fixed Panel Support Bars



Cat. No. SUP06
Fixed Panel Wall-To-Glass Support Bar
for 1/4" to 5/16" (6 to 8 mm) Glass

Cat. No. SUP10
Fixed Panel Wall-To-Glass Support Bar
for 3/8" to 1/2" (10 to 12 mm) Glass



Cat. No. SUP26
Fixed Panel Glass-To-Glass Support Bar
for 1/4" to 5/16" (6 to 8 mm) Glass

Cat. No. SUP20
Fixed Panel Glass-To-Glass Support Bar
for 3/8" to 1/2" (10 to 12 mm) Glass



Cat. No. SUP07
Fixed Panel Wall-To-Glass Support Bar
for 1/4" to 5/16" (6 to 8 mm) Glass

Support Bar Accessories and Replacement Parts

Cat. No. S1
Support Bar Only
39" (1 m) Bar



Cat. No. S2
Support Bar Only
51" (1.3 m) Bar



Cat. No. S80
Support Bar Only
80" (2.03 m) Bar



Adjustable U-Bracket



Cat. No. S4
For 1/4" and 5/16"
(6 and 8 mm) Glass



Cat. No. S5
For 3/8" and 1/2"
(10 and 12 mm) Glass

Wall/Ceiling Bracket



Cat. No. S3
Wall Mount Support
Bar Bracket



Cat. No. S12
Slim Line Wall Mount
Fitting



Square Support Bar - Polished Chrome

Support Bars

The Square Support Bar complements many CRL square corner style hinges. The bar stabilizes fixed panels of glass in enclosures that do not go to the ceiling. After ordering the bar itself, choose from a number of various fittings to complete the desired application. The fittings come with nylon-tipped set screws that secure the glass and prevent metal-to-metal contact. Finishes are available to match many popular decors. No holes or cut-outs are required in the glass.

Support Bar Accessories and Replacement Parts



Cat. No. SQ39
39" (1 m)
Square Bar Only



Cat. No. SQ59
59-1/16" (1.5 m)
Square Bar Only



Cat. No. SQ41
Swiveling U-Bracket
for 1/4" or 5/16"
(6 or 8 mm) Glass



Cat. No. SQ42
Swiveling U-Bracket
for 3/8" or 1/2"
(10 or 12 mm) Glass



Cat. No. SQ43
Movable Bracket
for 1/4" or 5/16"
(6 or 8 mm) Glass



Cat. No. SQ44
Movable Bracket
for 3/8" or 1/2"
(10 or 12 mm) Glass



Cat. No. SQ45
Adjustable
Corner Bracket



Cat. No. SQ46
Wall Mount Bracket



Cat. No. SQ47
45° Mitered
Wall Mount Bracket



Cat. No. SQ48
22.5° Mitered
Wall Mount Bracket



Cat. No. SQ49
Adjustable
Wall Mount Bracket



Cat. No. SQ50
"T" Junction Bracket



Cat. No. SQ910
Square Cornered Support
Bar Bracket for 3/8" to 1/2"
(10 to 12 mm) Glass



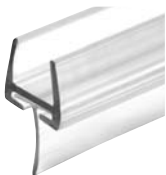
Cat. No. SQ9
Square Cornered Support
Bar Bracket for 1/4" to 5/16"
(6 to 8 mm) Glass

CRL | Water Seals and Sweeps



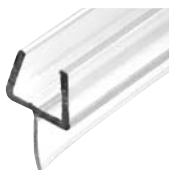
Strike and Door Jamb Seals for 180° Application

Water Seals and Sweeps



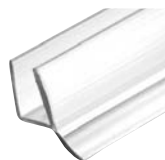
Clear Bottom Rail with Translucent Wipe

- Cat. No. P450BR**
5/16" (8 mm)
- Cat. No. P500BR**
3/8" (10 mm)
- Cat. No. P660BR**
1/2" (12 mm)



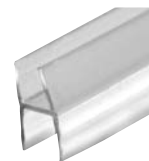
One-Piece Bottom Rail with Clear Wipe

- Cat. No. P501BR**
3/8" (10 mm)
- Cat. No. P661BR**
1/2" (12 mm)



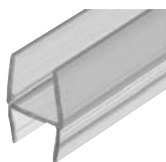
Dual Durometer PVC Seal with Wipe

- Cat. No. P14WS**
1/4" (6 mm)
- Cat. No. P770WS**
5/16" (8 mm)
- Cat. No. P880WS**
3/8" (10 mm)
- Cat. No. P120WS**
1/2" (12 mm)



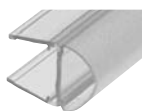
Multi-Purpose "H" Wipe

- Cat. No. P250HW**
1/4" (6 mm)
- Cat. No. P312HW**
5/16" (8 mm)
- Cat. No. P375HW**
3/8" (10 mm)
- Cat. No. P500HW**
1/2" (12 mm)



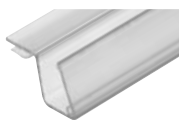
Multi-Purpose "H" Wipe with "Extra Soft" Twin Legs

- Cat. No. P375HWS**
3/8" (10 mm)



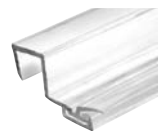
Polycarbonate "U" with Bulb Attachment

- Cat. No. PCR8**
5/16" (8 mm)
- Cat. No. PCR10**
3/8" (10 mm)
- Cat. No. PCR12**
1/2" (12 mm)



90 Degree Strike Side Seal

- Cat. No. PCJ8**
5/16" (8 mm)
- Cat. No. PCJ10**
3/8" (10 mm)



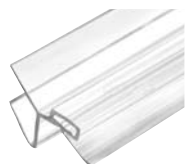
"U" Seal with Leg and Vinyl Insert at 90 Degrees

- Cat. No. P090SJ**
3/8" (10 mm)



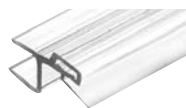
135 Degree Door Jamb Seal

- Cat. No. P045DJ**
5/16" (8 mm)
- Cat. No. P135DJ**
3/8" (10 mm)



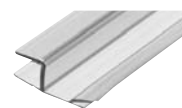
135 Degree Strike Jamb Seal

- Cat. No. P045SJ**
5/16" (8 mm)
- Cat. No. P135SJ**
3/8" (10 mm)



Strike and Door Jamb Seals for 180 Degree Application

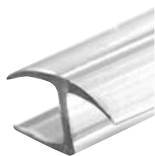
- Cat. No. P180SDJ**
3/8" (10 mm)
- Cat. No. P120SDJ**
1/2" (12 mm)



Strike and Door Jamb Seals for 180 Degree Application

- Cat. No. P1801P**
3/8" (10 mm)

Water Seals and Sweeps



Polycarbonate H-Jamb 180 Degree

- Cat. No. P140HJ**
1/4" (6 mm)
- Cat. No. P516HJ**
5/16" (8 mm)
- Cat. No. P380HJ**
3/8" (10 mm)
- Cat. No. P120HJ**
1/2" (12 mm)



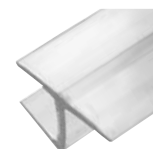
'Y' Jamb Seal with Soft Leg

- Cat. No. PCC8**
5/16" (8 mm)
- Cat. No. PCC10**
3/8" (10 mm)
- Cat. No. PCC12**
1/2" (12 mm)



'H' Jamb Seal with Cushion Fin for 180 Degree Application

- Cat. No. PCK8**
5/16" (8 mm)



Polycarbonate H-Jamb 180 Degree for 10 mm Glass

- Cat. No. P10MMHJ**
10 mm Only



Multi-Purpose Clear 'L' Angle Jamb Seal

- Cat. No. P12LJ**
1/4" to 1/2" (6 to 12 mm)
- Cat. No. P12LJT2**
1/2" (12 mm) with Tape



Translucent Vinyl 'L' Seal

- Cat. No. SDTNL**
5/16" (8 mm)
- Cat. No. SDTL**
3/8" (10 mm)
- Cat. No. SDTNLT2**
5/16" (8 mm) with Tape
- Cat. No. SDTLT2**
3/8" (10 mm) with Tape



Translucent Vinyl Double Fin Seal 5/16" Maximum Gap

- Cat. No. SDTDF**
5/16" (8 mm)
- Cat. No. SDTDFT2**
5/16" (8 mm) with Tape



Clear PVC Vinyl 'T' Seal

- Cat. No. V600CSGFT**
Sold in increments of 100'



Polycarbonate Water Seal and Sweep Profile Set

- Cat. No. PVPS95**
6" (152 mm)



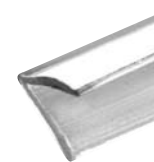
Clear Co-Extruded Bottom Wipe with Drip Rail

- Cat. No. P914WS**
1/4" (6 mm)
- Cat. No. P956WS**
5/16" (8 mm)
- Cat. No. P990WS**
3/8" (10 mm)
- Cat. No. P912WS**
1/2" (12 mm)



Translucent Vinyl Edge 'T' Wipe for 7/16" Maximum Gap

- Cat. No. SDTW**
7/16" (11 mm)
- Cat. No. SDTWT2**
7/16" (11 mm) with Tape



Translucent Vinyl Edge 'V' Seal for 1/4" Maximum Gap

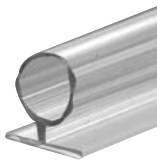
- Cat. No. SDTS**
1/4" (6 mm)
- Cat. No. SDTST2**
1/4" (6 mm) with Tape

Water Seals and Sweeps



Translucent Vinyl Bulb Seal 5/32" Gap

- Cat. No. SDTJ**
5/32" (4 mm)
- Cat. No. SDTB**
7/32" (5.6 mm)
- Cat. No. SDTJT2**
5/32" (4 mm) with Tape
- Cat. No. SDTBT2**
7/32" (5.6 mm) with Tape



Translucent Vinyl Bulb Seal 3/8" Gap

- Cat. No. SDLB**
3/8" (10 mm)



Translucent Silicone Bulb Seal

- Cat. No. S1LB**
3/16" (5 mm)



45 Degree LH Magnetic Profile for Glass-to-Glass fits 1/4" to 5/16" Glass

- Cat. No. PMA8**
1/4" to 5/16" (6 to 8 mm)



45 Degree RH Magnetic Profile for Glass-to-Glass fits 1/4" to 5/16" Glass

- Cat. No. PMB8**
1/4" to 5/16" (6 to 8 mm)



90 Degree Magnetic Profile for Glass-to-Glass fits 1/4" to 5/16" Glass

- Cat. No. PMC8**
1/4" to 5/16" (6 to 8 mm)



45 Degree LH Magnetic Profile for Glass-to-Glass Fits 3/8" to 1/2" Glass

- Cat. No. PMA10**
3/8" to 1/2" (10 to 12 mm)



45 Degree RH Magnetic Profile for Glass-to-Glass fits 3/8" to 1/2" Glass

- Cat. No. PMB10**
3/8" to 1/2" (10 to 12 mm)

Magnetic Profiles



90 Degree Magnetic Profile for Glass-to-Glass fits 3/8" to 1/2" Glass

- Cat. No. PMC10**
3/8" to 1/2" (10 to 12 mm)

For 1/4" to 5/16" (6 to 8 mm) Thick Glass

Angle	Profiles Required	Configuration
180°	PMA8 + PMA8	Door swings in one direction only
180°	PMC8 + PMC8	Door swings in both directions
135°	PMA8 + PMC8	Door swings out only
90°	PMA8 + PMB8	Reverse for polarity-door swings out only

For 3/8" to 1/2" (10 to 12 mm) Thick Glass

Angle	Profiles Required	Configuration
180°	PMC10 + PMA10	Door swings in one direction only
180°	PMA10 + PMC10	Door swings in both directions
135°	PMA10 + PMC10	Door swings out only
90°	PMA10 + PMB10	Reverse for polarity-door swings out only

Showers Online[®]

Complete Design and Estimating Program for Shower Enclosures

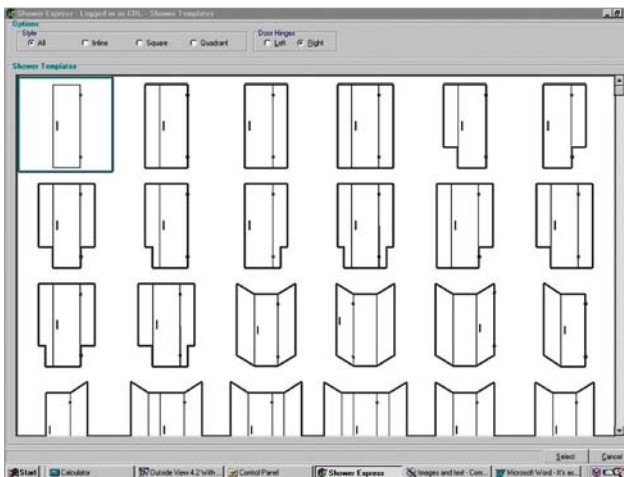
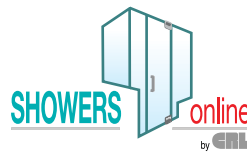
Showers Online is an intuitive, easy-to-use estimating program that lets glaziers design and quote shower enclosures faster than ever. Showers Online determines the glass and hardware required, minimizes errors on estimates, and generates complete quote packages in a matter of clicks. This lets contractors bid more jobs in less time.

Showers Online uses a comprehensive and automated approach to take the guesswork out of designing and quoting. It provides the glass sizes required, a parts list with pricing, 3D enhanced drawings, and a complete set of fabrication and installation instructions. Its user-friendly interface means new team members can become capable estimators in a short amount of time.

Call us at (800) 421-6144 for more information and to start your **30-Day Free Trial**.

Features & Benefits

- Automated software boosts efficiency
- Accurately calculates glass sizes, hardware locations, glass cut-outs and gaps
- Issues warnings when designs are flawed
- Minimizes errors on estimates
- Online software gives you 24-hour access from your laptop or mobile device
- Quickly provide real-time quotes in the field
- Conveniently order glass and hardware from the program
- Creates a complete quote package with company logo





Vienna Hinges & 90° Glass-to-Glass "Open Face" Clamp - Polished Chrome



For more information, contact us at

800.421.6144 • showers.security@crlaurence.com • crlaurence.com