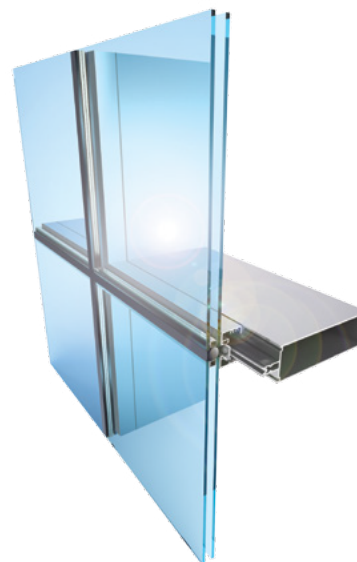


Reliance™ Cassette Curtain Wall

The high-rise, all-glass look now available for low-rise applications

Reliance Cassette Curtain Wall is a **4-sided structurally glazed** system that allows the installer to shop glaze the infill onto "cassette frames" using 3M™ VHB™ structural glazing tape or structural silicone. These **pre-glazed frames** are then taken to the field and applied to a structural grid of standard Reliance or Reliance-SS curtain wall framing providing a 4-sided structurally glazed appearance with an overall system depth of 6-3/4", 8" and 10-7/8". This system can be used in either **new construction or retrofit** onto existing Reliance or Reliance-SS installations.



The system includes **thermally improved door framing adaptors**, which can accommodate Oldcastle BuildingEnvelope® Thermal Entrances to complete a thermal elevation. Reliance Cassette can also accommodate exterior face caps to provide unique architectural framing features or transition to a standard Reliance or Reliance-SS curtain wall installation.

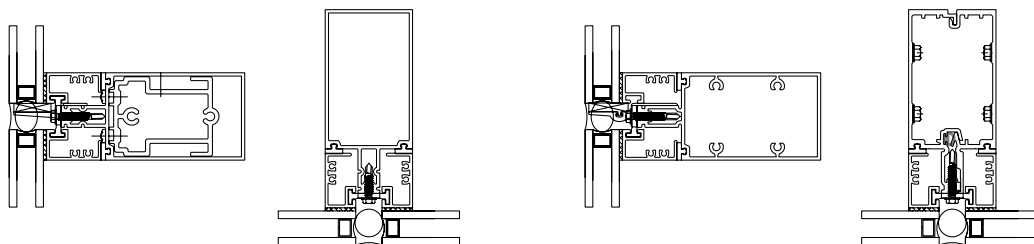


**Monolithic
all-glass look**

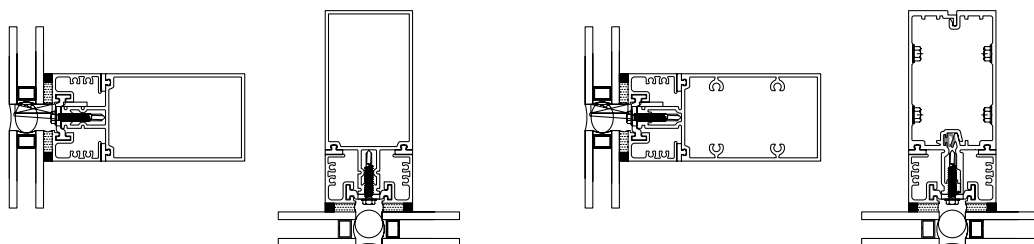
Features

- May be installed using Reliance shear block curtain wall or Reliance-SS screw spline curtain wall
- Captured perimeter or captured intermediate installation options
- Can transition from 4-sided silicone to standard Reliance or Reliance-SS with pre-engineered transition assemblies.
- Accommodates ZS-30 projected and casement vents
- Accommodates low profile door frames for entrance doors
- Factory-painted KYNAR 500/HYLAR 5000 finishes, meeting all provisions of AAMA 2605
- Factory-anodized finishing

Product Details



3M™ VHB™ Structural Tape Glazing



Structural Silicone Glazing

Performance

Air Infiltration	<.06 CFM/sq.ft. (6.24 PSF) per ASTM E283
Static Water	15 PSF per ASTM E331
Dynamic Water:	20 PSF per AAMA 501.1
Deflection Load:	40 PSF per ASTM E330
Structural Load:	60 PSF per ASTM E330
Seismic:	Testing per AAMA 501.4 and AAMA 501.6

STC

35 (1/4" - 1/2" - 1/4" glazing)

38 (1/4" lam - 1/2" - 1/4" lam glazing)

Thermal performance per AAMA 1503:

Clear 1" insulating glass:

U-factor = 0.29 - CRF frame = 80

Low-E insulating glass:

U-factor = 0.30 - CRF frame = 85

NFRC certified

Thermal Performance Characteristics per AAMA 507