



INSTALLATION INSTRUCTIONS

crlaurence.com

CRESCENT SERIES CRE78 SLIDING DOOR KIT



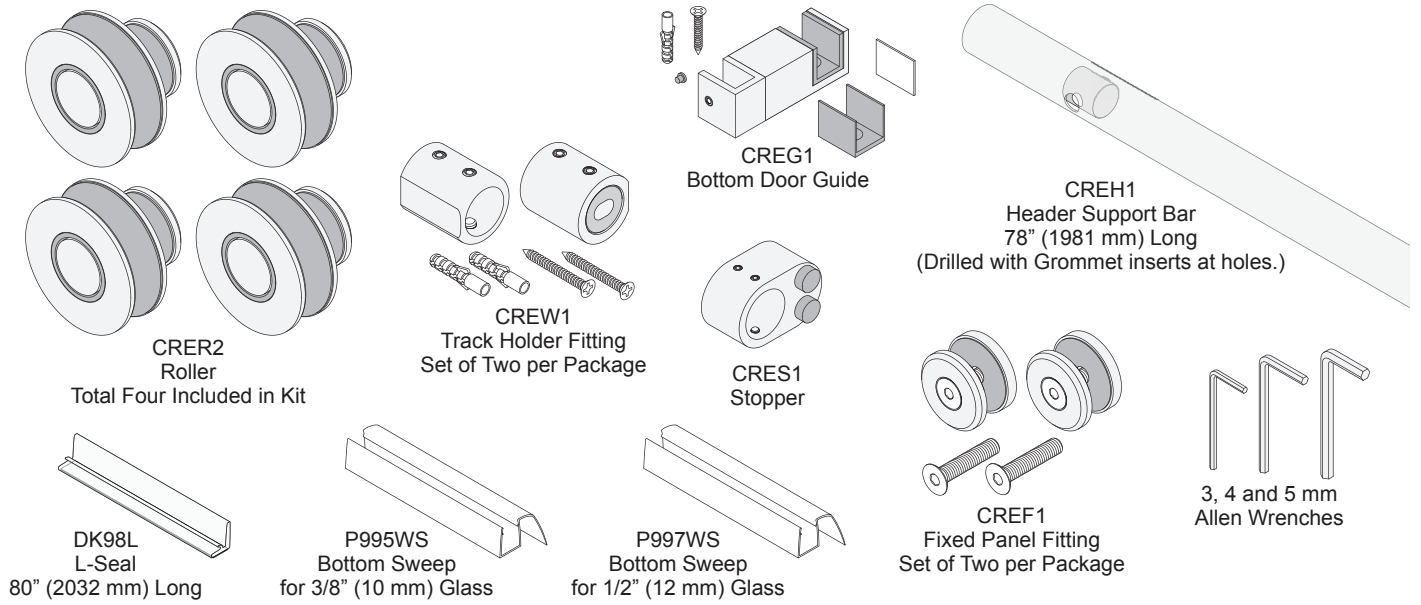
NOTE: Glass and U-Channels not included.

ORDER OF ASSEMBLY AND INSTALLATION

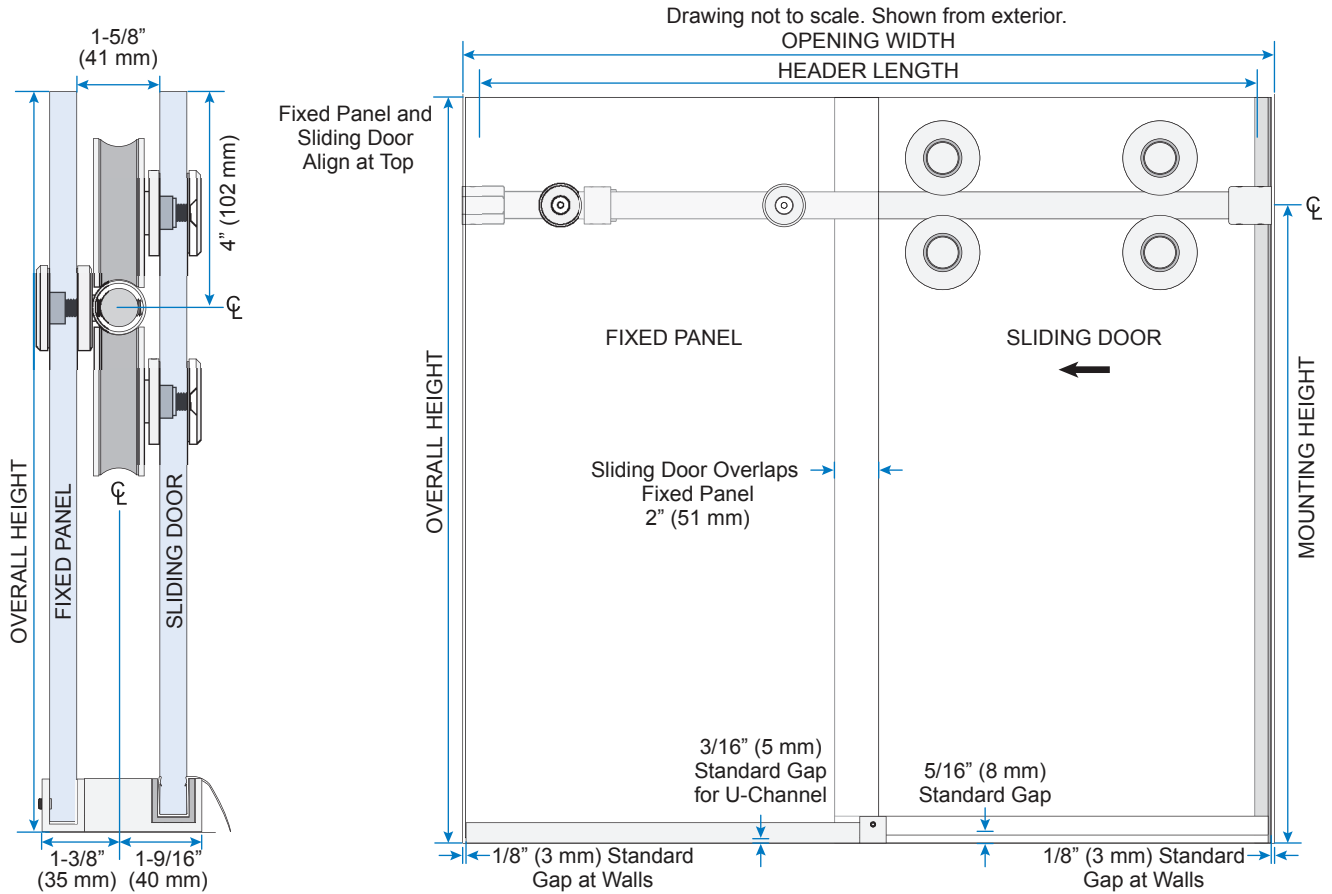
PARTS LIST	3
SPECIFICATIONS	3
GLASS FABRICATION	4
SLIDING DOOR PREPARATION	5
Unpack Rollers	5
Install Top Rollers	5
Install Bottom Sweep	5
SITE PREPARATION	6
Mark Location for Header Support Bar	6
FRAME FABRICATION	6
Prepare Header Bar: Opening Width Greater Than 53-3/4"	6
Prepare Header Bar: Opening Width Less Than 53-3/4"	6
FRAME INSTALLATION	7 - 10
Mount Track Holder Fittings	7
Install Stopper	7
Install Header	7
Bottom Guide Mounting Options and U-Channel Preparation (Optional)	8
Unpack and Prepare Bottom Door Guide	8
Install Fixed Panel Curb Mounts	8
Install Fixed Panels	9
Place Bottom Door Guide	9
Install Bottom Door Guide	10
SLIDING DOOR INSTALLATION	10
Hang Sliding Door	10
Install Bottom Rollers	10
FINISHING	11
Adjust Stopper Position	11
Install L-Seal	11

IMPORTANT: READ THIS MANUAL THOROUGHLY BEFORE BEGINNING INSTALLATION.

PARTS LIST



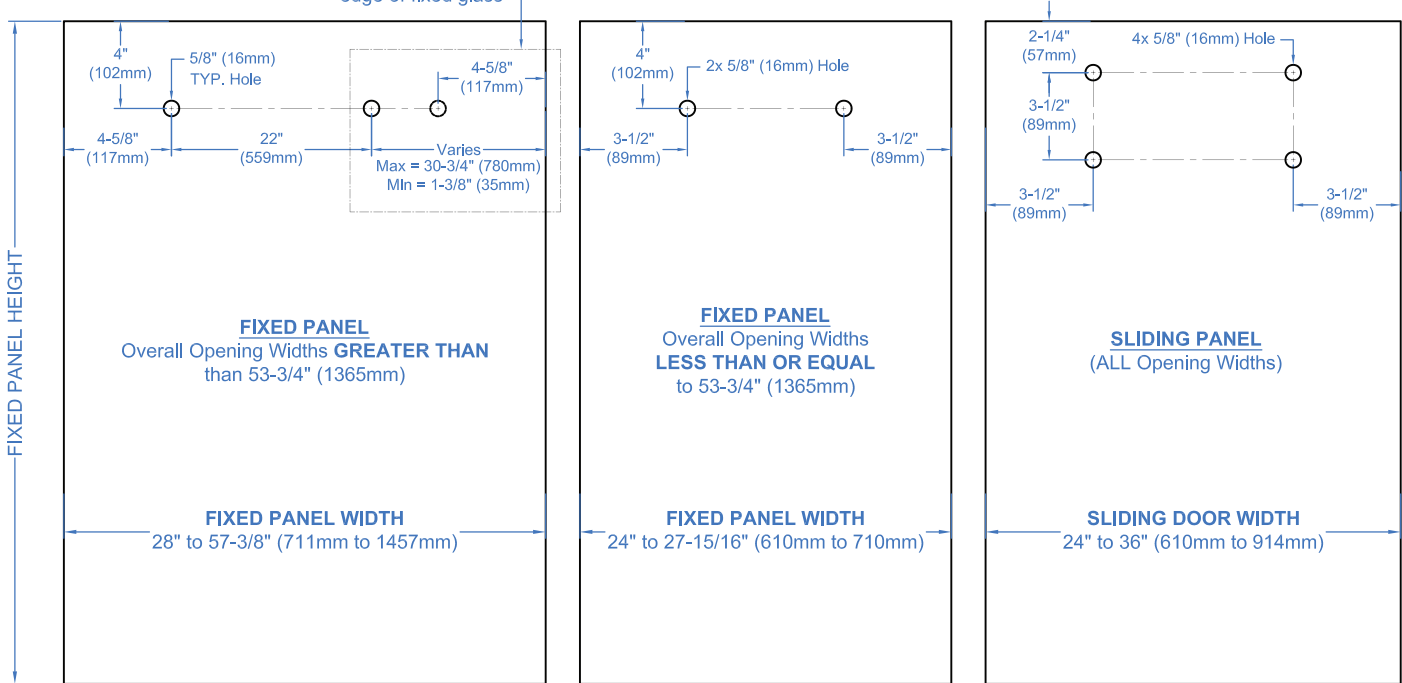
SPECIFICATIONS



GLASS FABRICATION

Use 3/8" or 1/2" (10 or 12 mm) Tempered Glass only. Do not use Laminated Glass.

If Varies is **Greater** than 9-5/8" (245mm), then additional 5/8" (16mm) hole is required at 4-5/8" (117mm) from the edge of fixed glass



NOTE: For Opening Widths less than 53-3/4" we recommend moving the holes for the Fixed Panel closer to the edge of the glass as shown above.

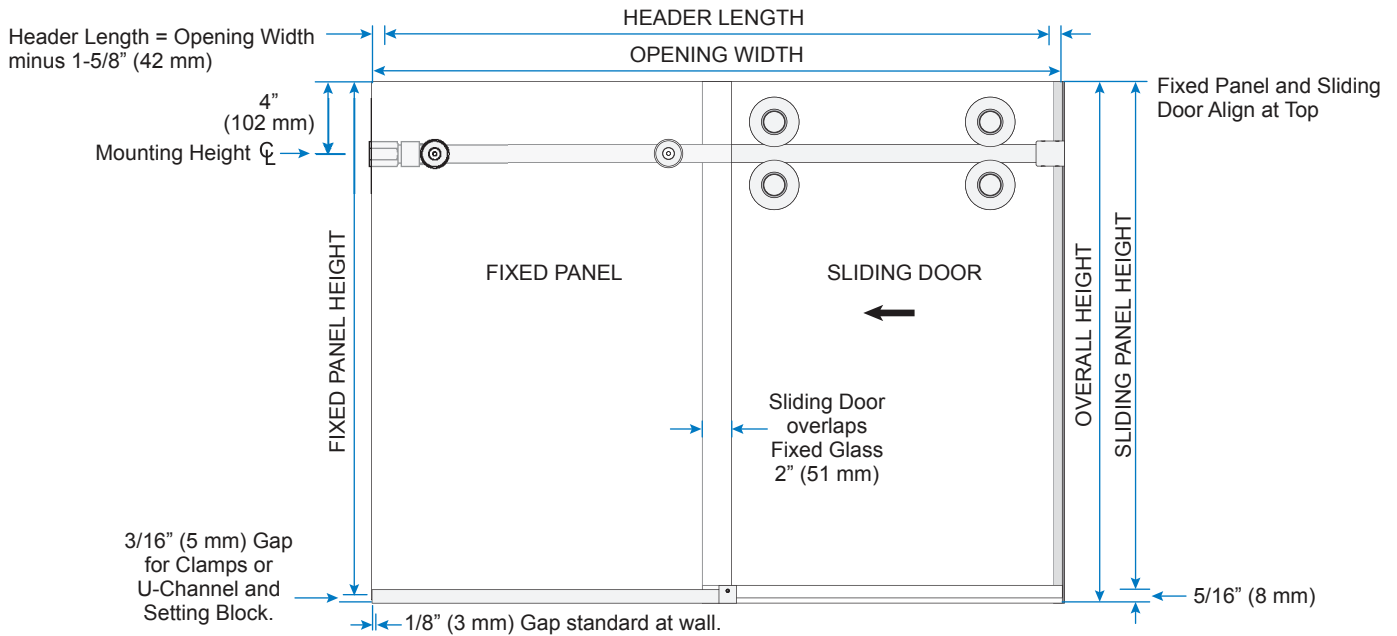
FIXED PANEL AND SLIDING DOOR HEIGHTS

FIXED PANEL: Overall Height minus 3/16" (5 mm)

SLIDING DOOR: Overall Height minus 5/16" (8 mm)

FIXED PANEL AND SLIDING DOOR WIDTHS

2 EVEN PANELS: Overall Width divided by 2, plus 7/8" (22 mm). NOTE: Fixed Glass Fabrication changes for Openings less than 53-3/4".



NOTE: Drawings not shown to scale. Track is cut 1-5/8" (42 mm) less than Opening Width and centered in opening. Overall Height is height from curb/floor to top of glass. Drawings shown from interior.

SLIDING DOOR PREPARATION

Unpack Rollers

- 1 Unpack and partially disassemble two sets of Rollers.

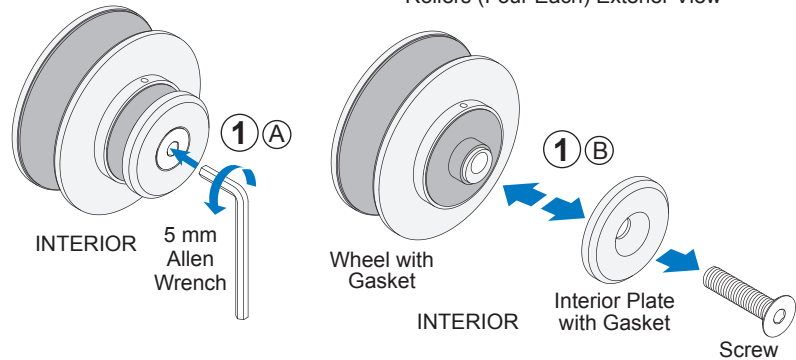
NOTE: Rollers shipped assembled.
5 mm Allen Wrench included.



Install Top Rollers

- 2 Adjust wheel height.
- 3 Install Top Rollers on Sliding Door.

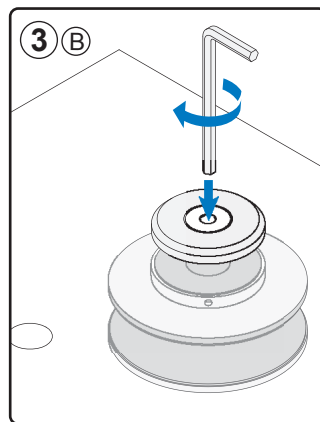
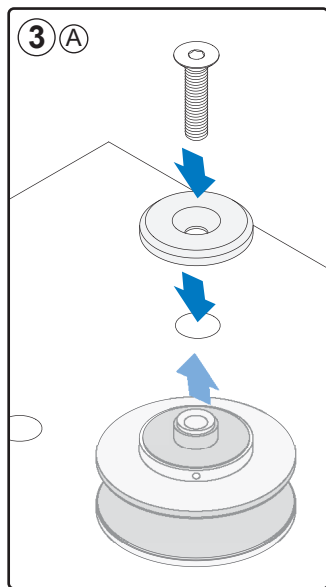
NOTE: Lower Rollers are installed
after door is hung. See Page 10.



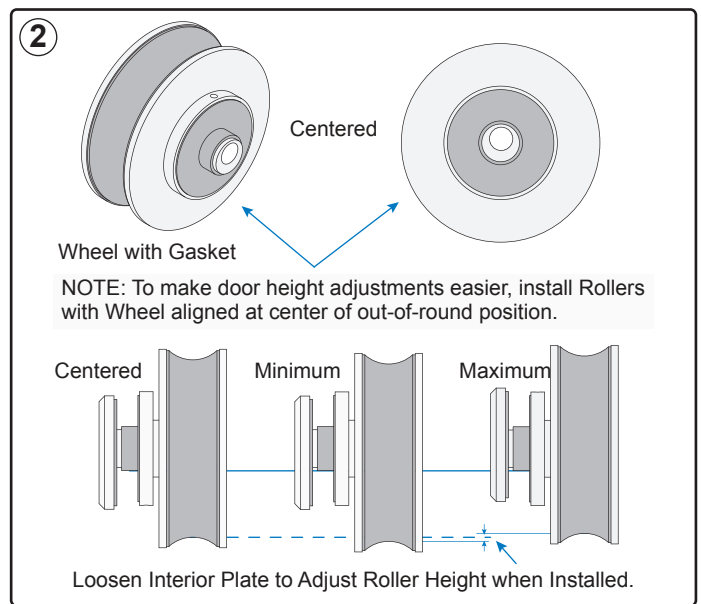
Install Bottom Sweep

- 4 Cut Bottom Sweeps to door width and fit on the bottom of door.

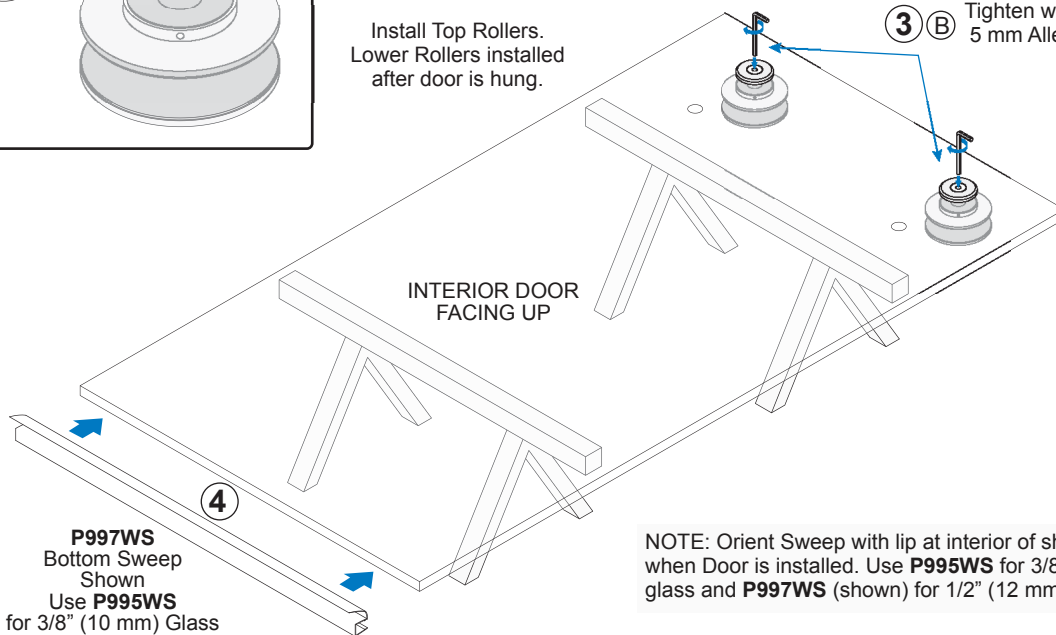
NOTE: Select one of two sizes of included Sweeps.



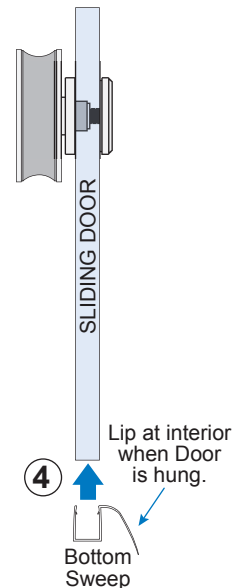
Install Top Rollers.
Lower Rollers installed
after door is hung.



- 3 B Tighten with Included 5 mm Allen Wrench.



NOTE: Orient Sweep with lip at interior of shower
when Door is installed. Use P995WS for 3/8" (10 mm)
glass and P997WS (shown) for 1/2" (12 mm) glass.



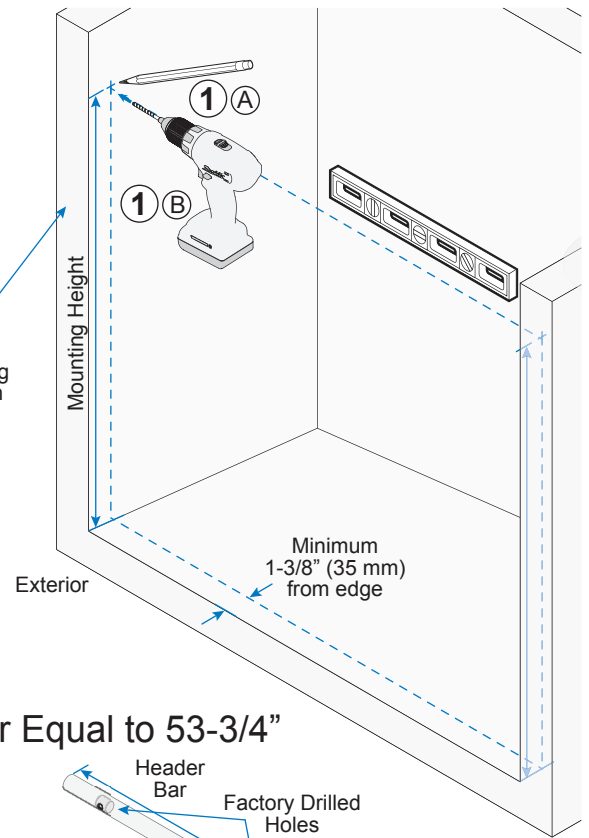
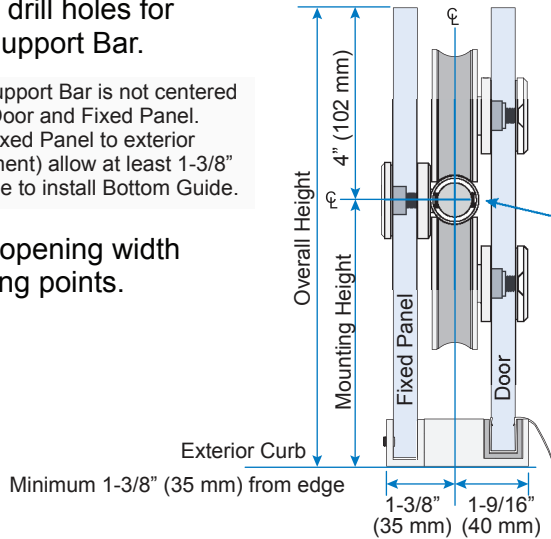
SITE PREPARATION

Mark Location for Header Support Bar

- 1 Mark and drill holes for Header Support Bar.

NOTE: Header Support Bar is not centered between Sliding Door and Fixed Panel. When installing Fixed Panel to exterior (traditional placement) allow at least 1-3/8" (35 mm) from edge to install Bottom Guide.

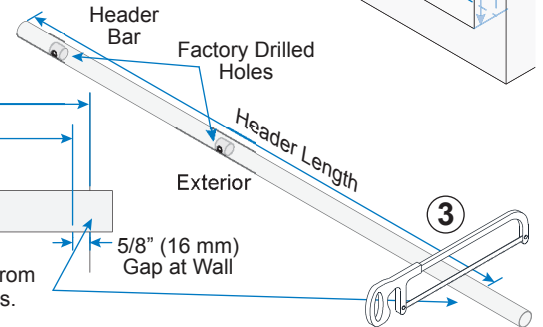
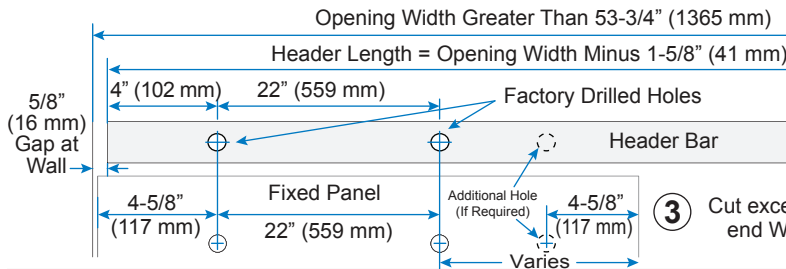
- 2 Measure opening width at mounting points.



FRAME FABRICATION

Prepare Header Bar: Opening Width Greater Than or Equal to 53-3/4"

- 3 Cut CREH1 Header Bar from end without holes.



NOTE: Header Support Bar is cut 1-5/8" (41 mm) short from tight dimension and centered in opening.
NOTE: If Varies is > 9-5/8", additional hole is required @ 4-5/8" from edge of glass

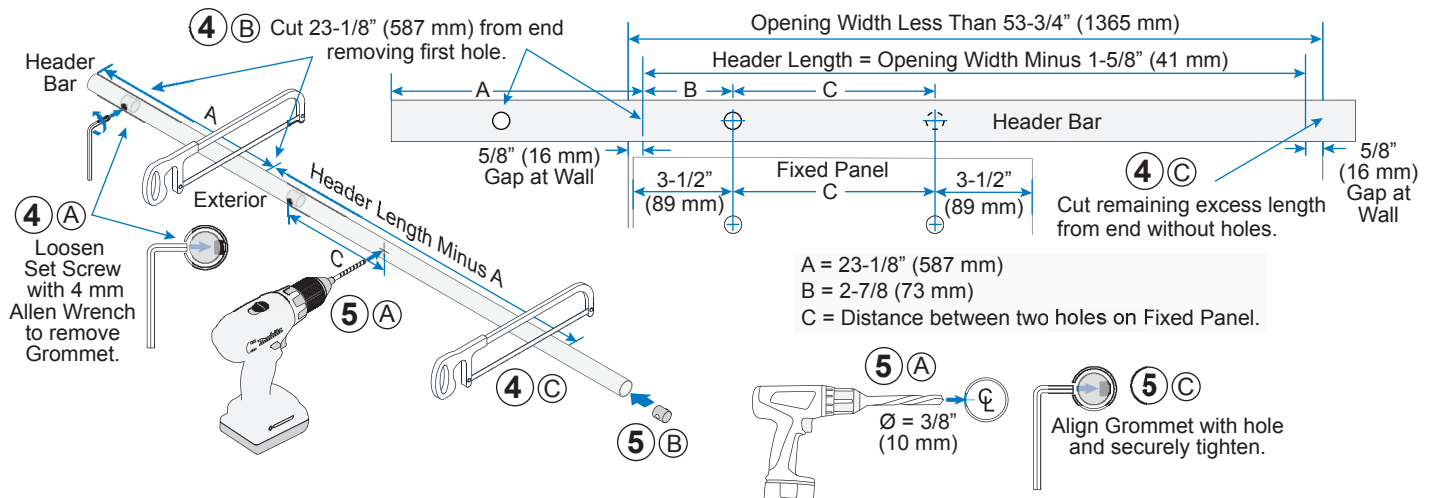
NOTE: Header Bar is made of stainless steel. Use hacksaw or special cutting tool.

Prepare Header Bar: Opening Width Less Than or Equal 53-3/4"

- 4 Cut excess length from CREH1 Header Bar from both ends.

NOTE: Remove Grommet at first hole before cutting. Header Bar is made of stainless steel. Use hacksaw or special cutting tool.

- 5 Drill second hole for Fixed Panel Fitting and reinstall Grommet.



A = 23-1/8" (587 mm)
B = 2-7/8 (73 mm)
C = Distance between two holes on Fixed Panel.

FRAME INSTALLATION

Mount Track Holder Fittings

① Unpack Track Holder Fittings. Loosen Set Screws and remove Mounting Blocks.

② Fasten Mounting Blocks to wall.

Install Stopper

③ Unpack and loosen Set Screws on top and bottom of Stopper.

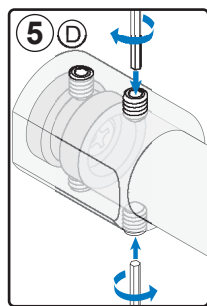
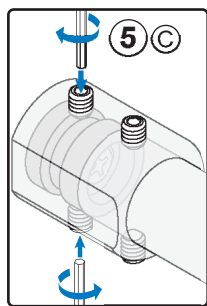
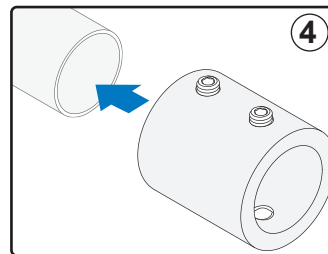
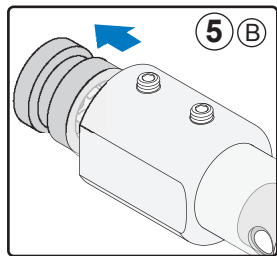
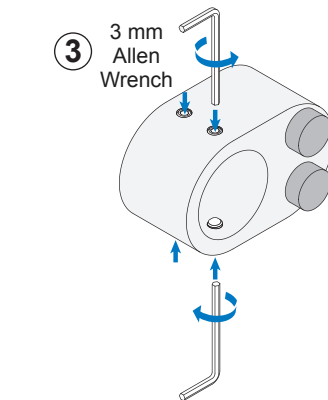
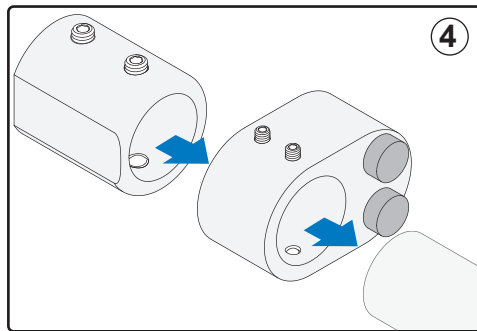
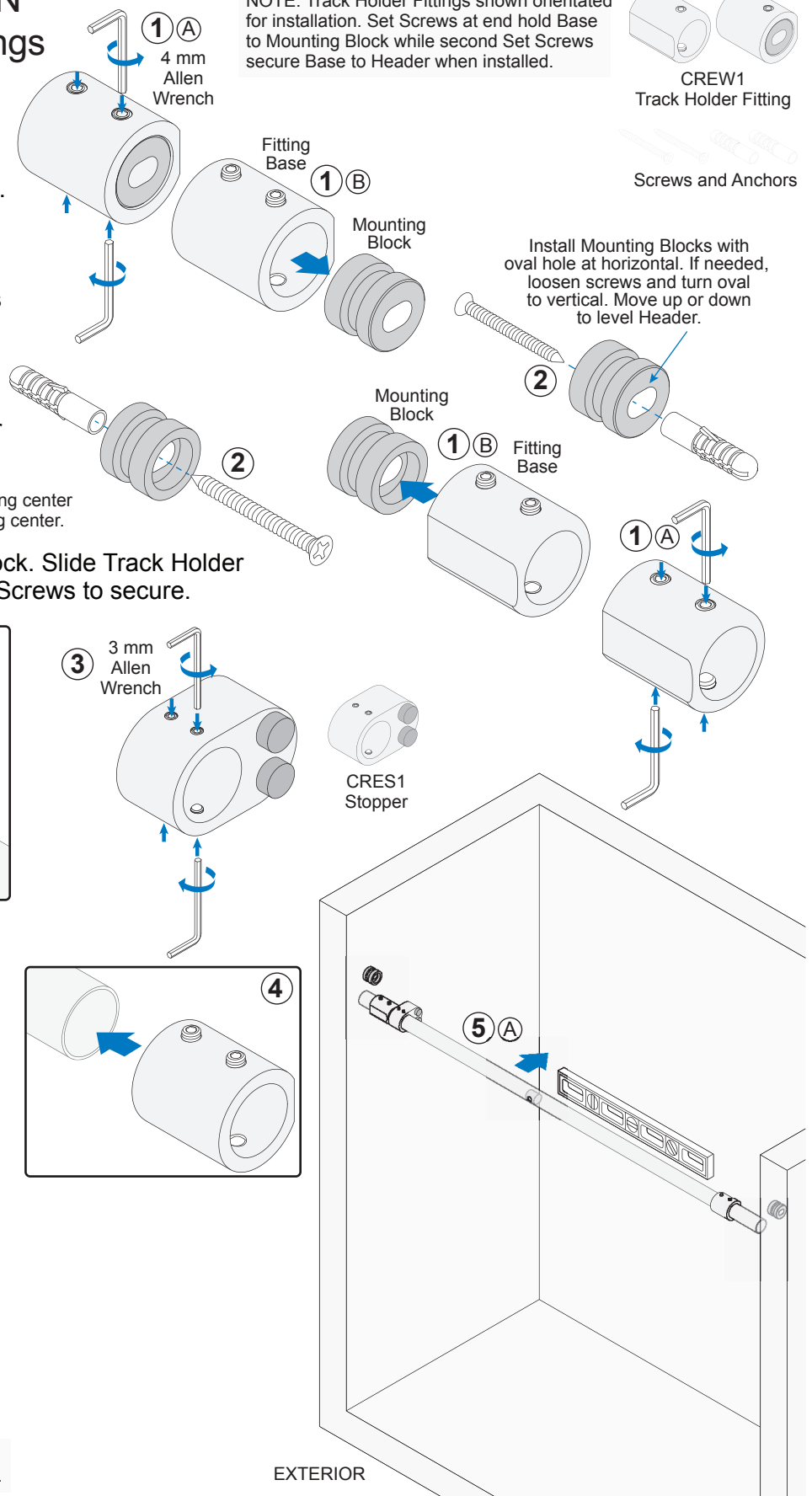
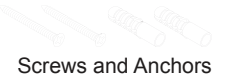
Install Header

④ Slide Stopper and Track Holder Fittings onto Header.

NOTE: Orient Stopper with Rubber Bumpers facing center and Track Holder Fittings with rounded end facing center.

⑤ Align Header with Mounting Block. Slide Track Holder Fittings to wall and tighten Set Screws to secure.

NOTE: Track Holder Fittings shown orientated for installation. Set Screws at end hold Base to Mounting Block while second Set Screws secure Base to Header when installed.



NOTE: Ensure Header is level. If not, loosen screws holding Mounting Blocks to adjust height.

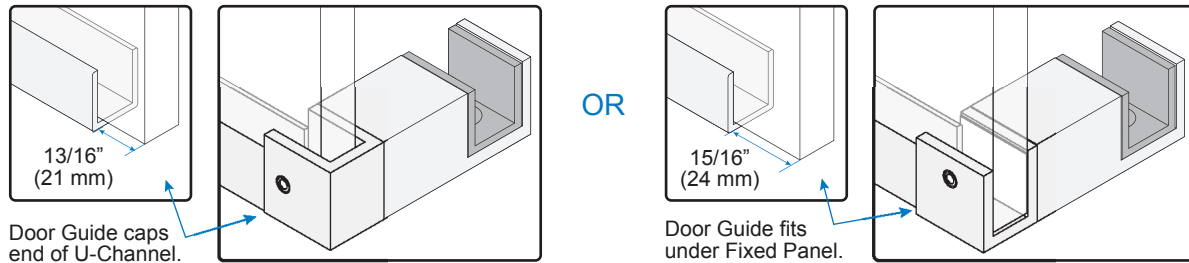
EXTERIOR

FRAME INSTALLATION (CONTINUED)

Bottom Guide Mounting Options and U-Channel Preparation (Optional)

NOTE: Fixed Panel may be fastened to curb with clamps. Use dimensions shown below to calculate length of U-Channel for each mounting option.

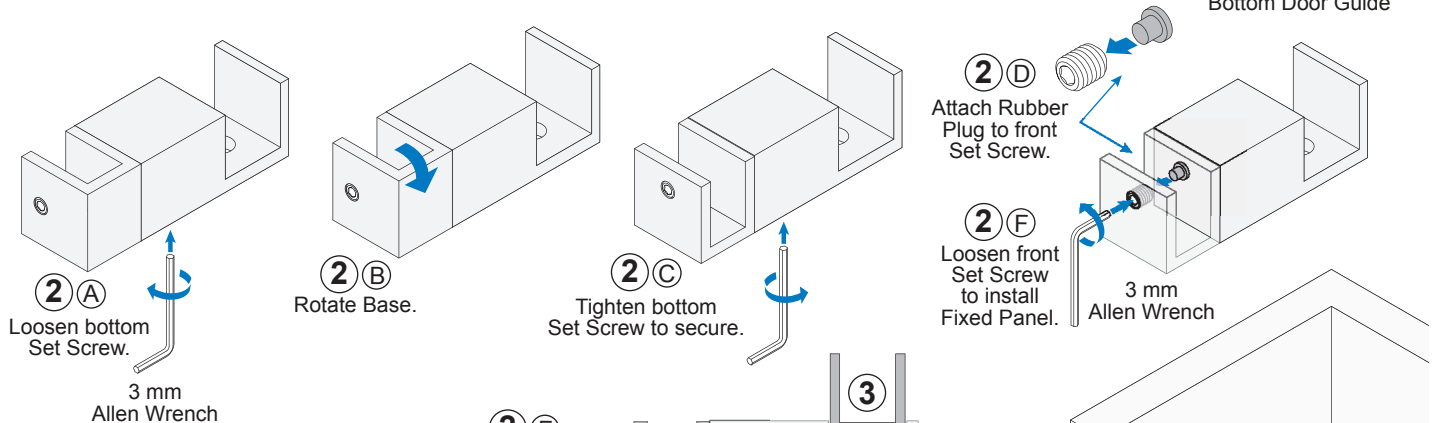
1 Determine Bottom Door Guide mounting option.



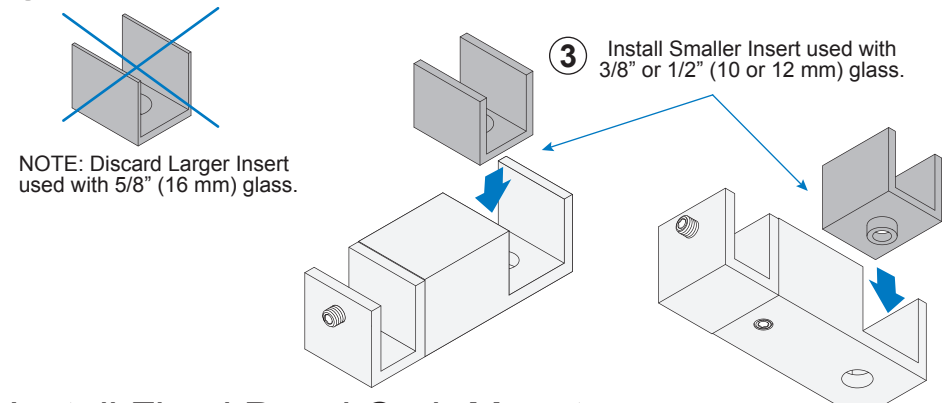
Unpack and Prepare Bottom Door Guide

2 Unpack Bottom Door Guide. Rotate orientation if needed. (Optional)

NOTE: Door Guide shipped oriented to cap Fixed Panel on right. Loosen bottom Set Screw and rotate base to change orientation. Select smaller of two included inserts.



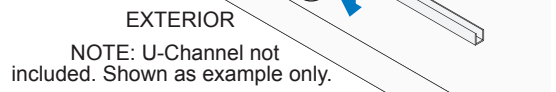
3 Install Glass Insert.



Install Fixed Panel Curb Mounts

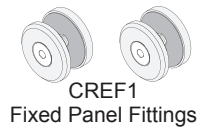
4 Mount Clamps or U-Channel on curb.

NOTE: Door Guide installed after Sliding Door is hung. Door Guide positioned under Fixed Panel shown in installation in this manual.

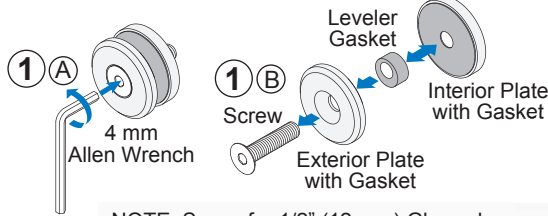


FRAME INSTALLATION (CONTINUED)

Install Fixed Panels

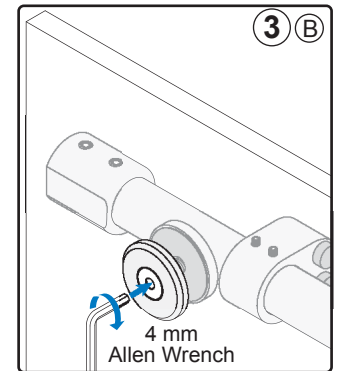
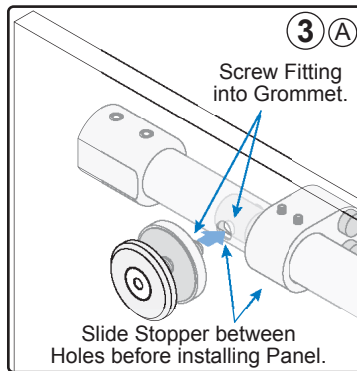
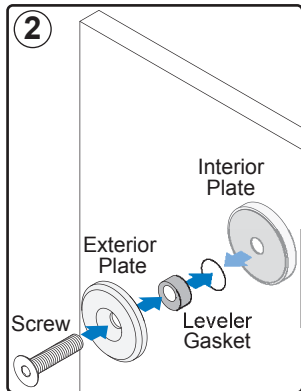


- ① Unpack and disassemble Fixed Panel Fittings.
- ② Attach Fixed Panel Fittings to Fixed Panel.
- ③ Align Fittings with Grommets in Header Bar. Securely fasten.



NOTE: Screw for 1/2" (12 mm) Glass shown. Shorter screw used for 3/8" (10 mm) Glass.

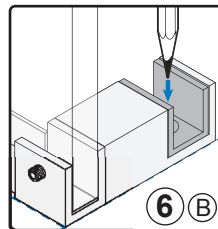
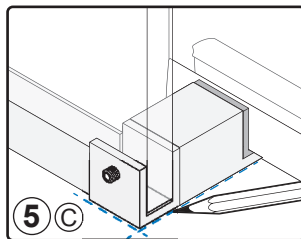
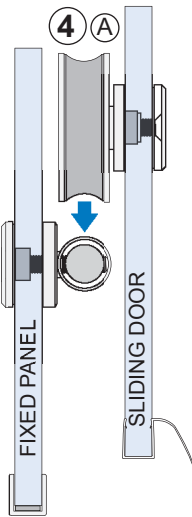
NOTE: If Grommets are not centered, loosen Track Holder Set Screws and rotate Header Bar.



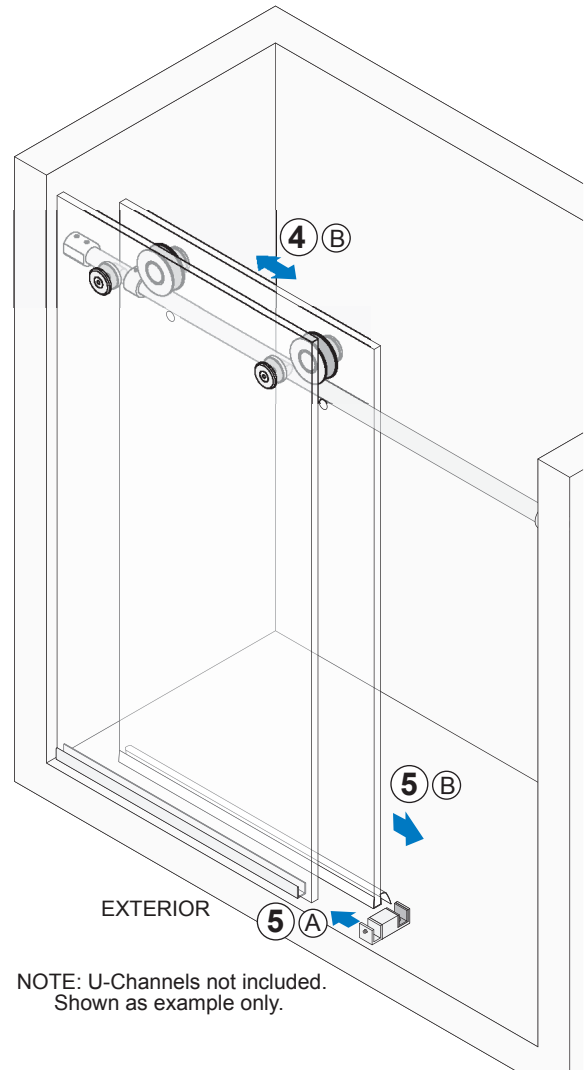
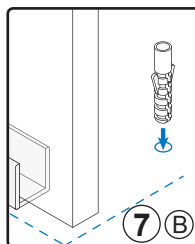
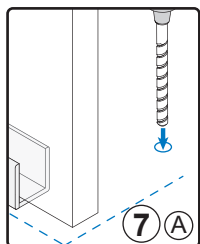
Place Bottom Door Guide

- ④ Hang Sliding Door and carefully slide back and forth to check height.
- ⑤ Place Door Guide to engage with Sliding Door. Close Door, adjust Guide position and outline.

NOTE: See Page 5 to Prepare Door before hanging and to adjust Roller height if needed.



- ⑥ Remove Door to mark hole.
- ⑦ Remove Guide. Drill hole and insert anchor.

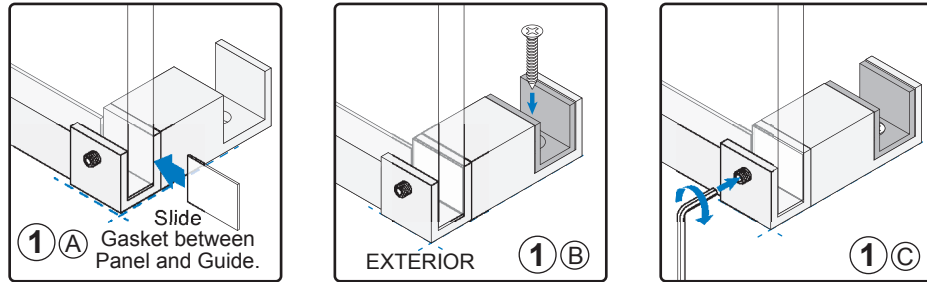


NOTE: U-Channels not included. Shown as example only.

FRAME INSTALLATION (CONTINUED)

Install Bottom Door Guide

① Fasten Bottom Door Guide and tighten Set Screw at Fixed Panel.



SLIDING DOOR INSTALLATION

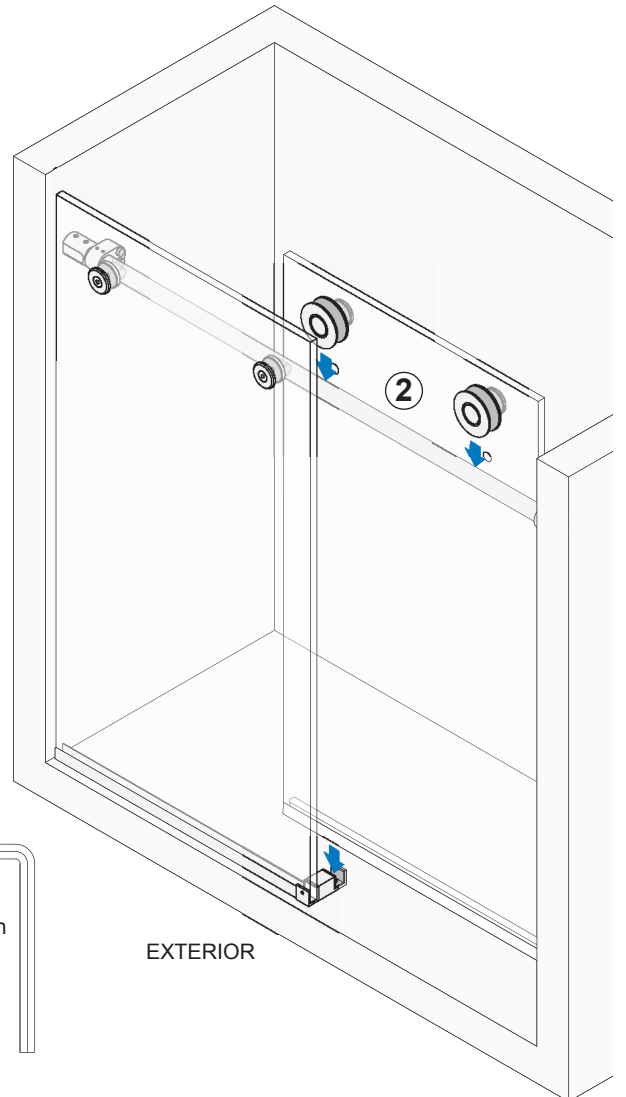
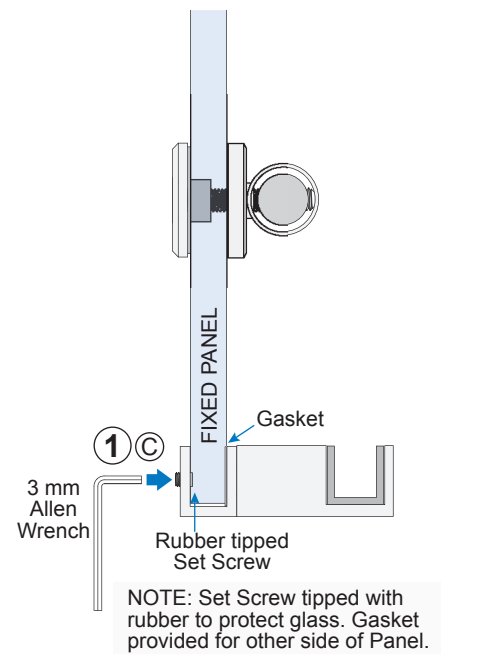
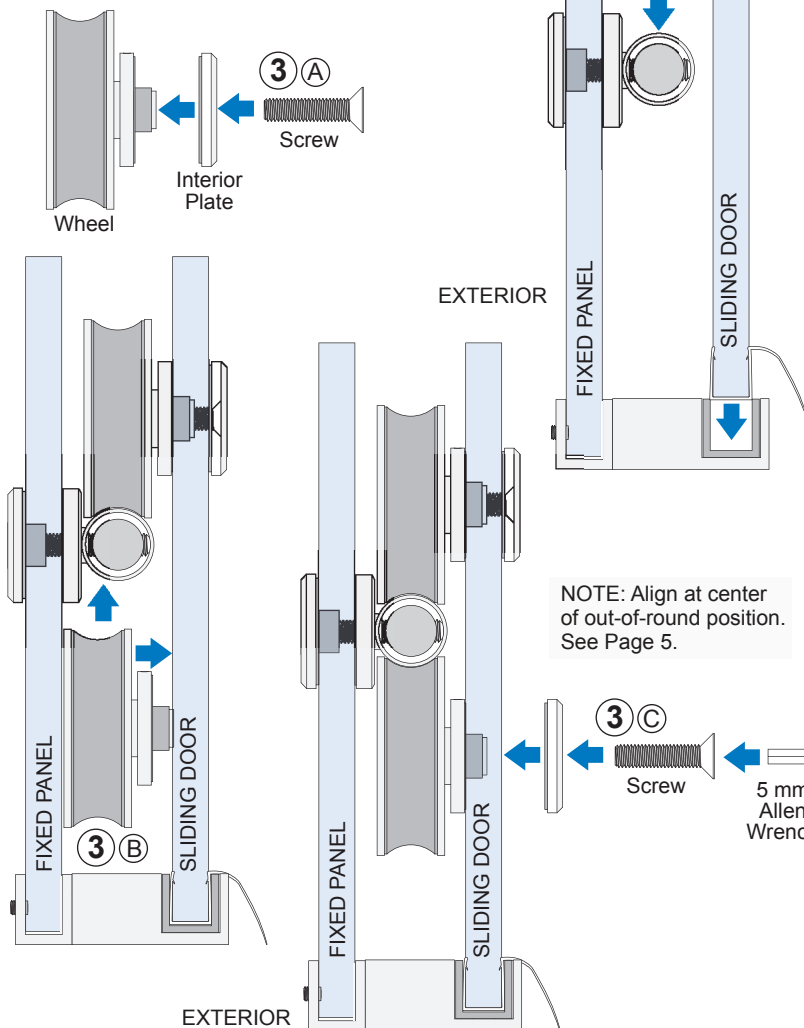
Hang Sliding Door

② Hang Sliding Door placing Glass inside Bottom Guide.

Install Bottom Rollers

③ Prepare and install Bottom Rollers.

NOTE: See Page 5 before installing Rollers.



FINISHING

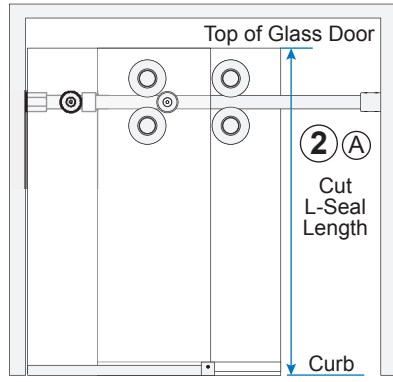
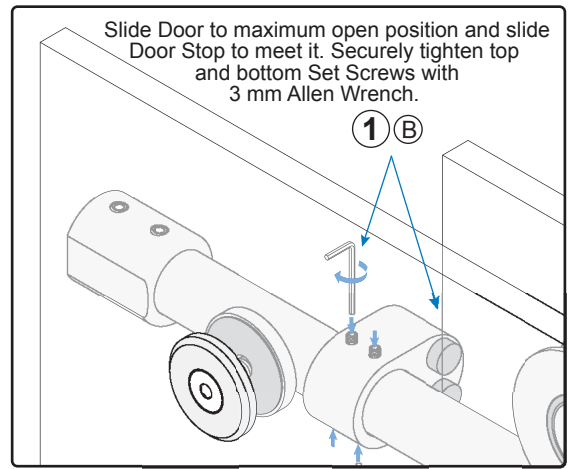
Adjust Stopper Position

- 1 Position Door Stop and secure.

Install L-Seal

- 2 Cut and install L-Seal.

NOTE: Temporarily attach L-Seal to Sliding Door. Use as guide for final position.



VIEW FROM EXTERIOR

