



STOREFRONTS

SERIES 450 CENTER / INTERIOR GLAZED SCREW SPLINE STOREFRONT SYSTEM

450 SERIES SPECIFICATIONS

Fabrication and installation labor costs have always been a decisive factor in selecting framing systems for storefront projects. U.S. Aluminum offers cost efficient versatile Center Glazed Systems with clean lines and superb performance. Series 450 may be interior or exterior glazed. A top load E.P.D.M. gasket is used to position and weatherseal the glass in the aluminum pocket. Center Glazed Systems are compatible with most U.S. Aluminum entrance doors.

- 1 3/4" x 4 1/2" frame
- 1/4" Glazing infill
- Full range of accessory components
- Available in an array of architectural coatings and anodized finishes
- Screw spline assembly (SHOWN)
- Shear block assembly
- Stacking installation option
- Interior or Exterior Glazed (INTERIOR GLAZED OPTION SHOWN)

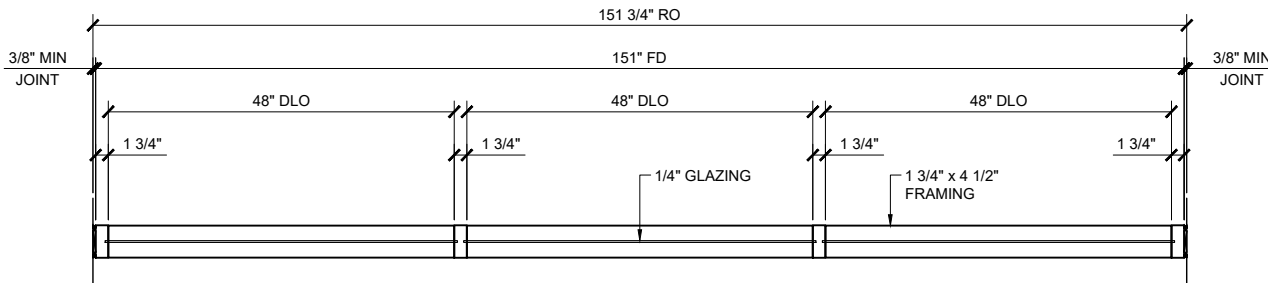
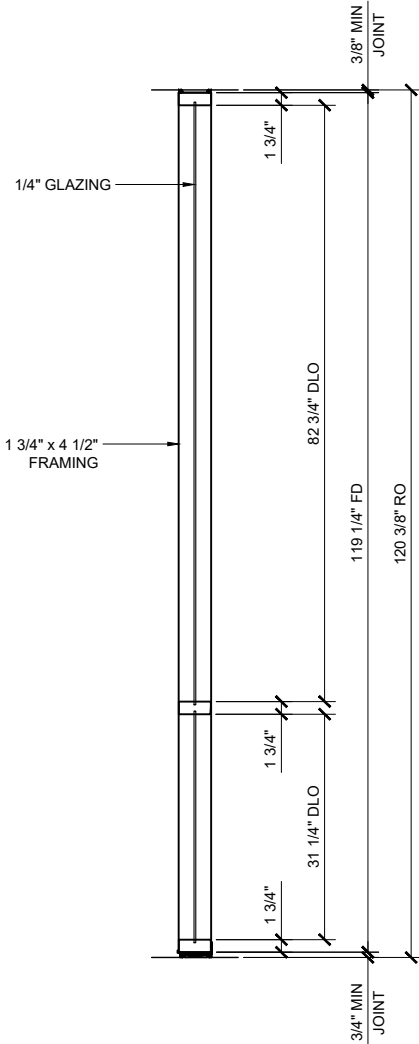
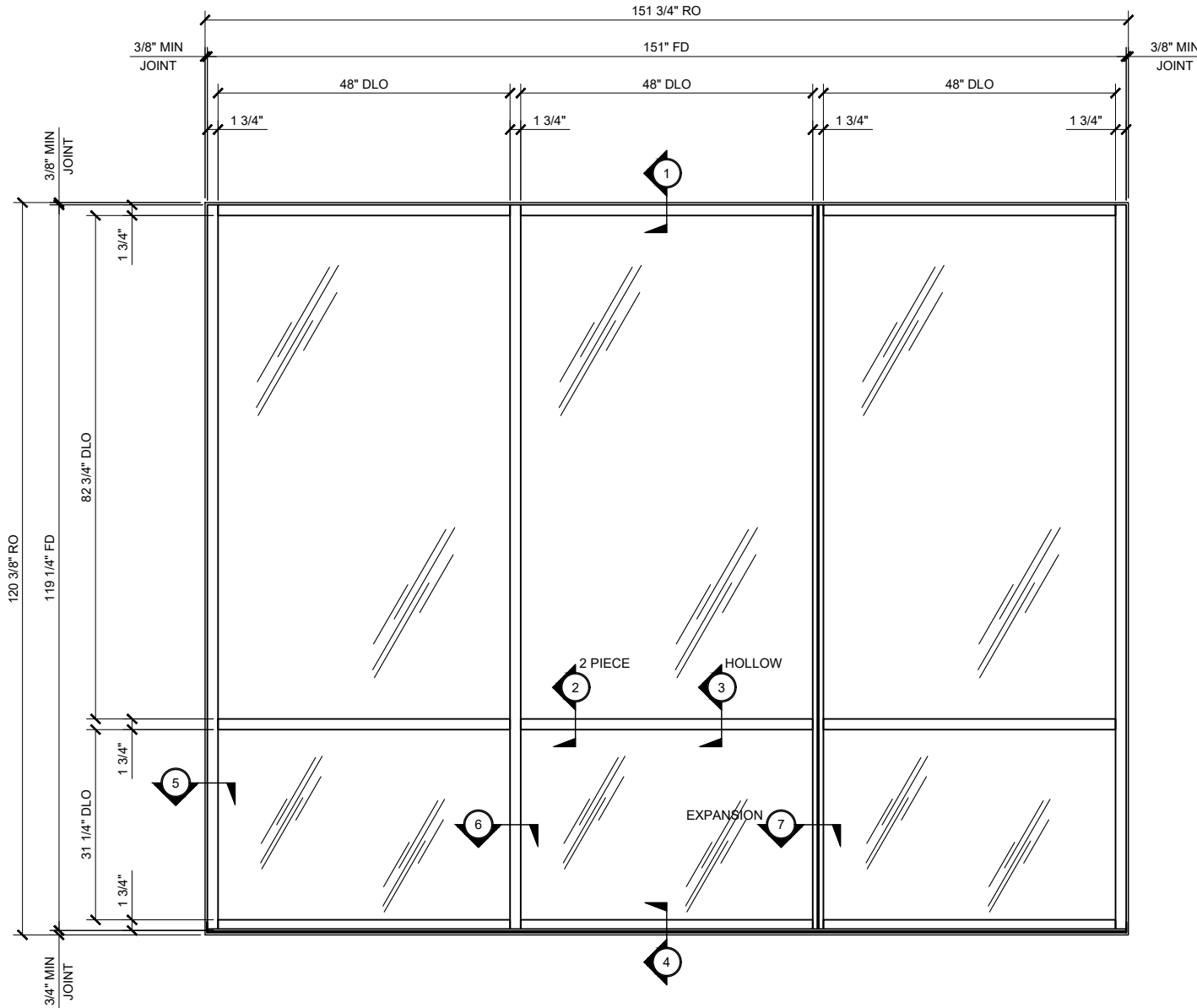
STRUCTURAL DISCLAIMER:

ALL CUSTOMERS WHO IN ANY WAY UTILIZE THIS PRODUCT ARE SOLELY RESPONSIBLE TO CONSULT A STRUCTURAL ENGINEER TO DETERMINE THE SUITABILITY OF THE PRODUCT FOR THE INTENDED USE AND SITE CONDITIONS. ALL INSTALLERS MUST BE QUALIFIED AND HAVE PROFESSIONAL KNOWLEDGE ABOUT COMPLIANCE WITH LOCAL, STATE AND FEDERAL REGULATIONS, SAFETY FACTORS, AND THE APPROPRIATE CHOICE OF FIXING MATERIAL AND PROCEDURES.

STANDARD ABBREVIATIONS

- | | |
|------|---------------------------|
| RO | ROUGH OPENING |
| FD | FRAME DIMENSION |
| DLO | DAYLITE OPENING |
| DO | DOOR OPENING |
| DD | DOOR DIMENSION |
| SMC | SURFACE MOUNTED CLOSER |
| OHCC | OVERHEAD CONCEALED CLOSER |

GLASS SIZING NOTE:
REFERENCE U.S. ALUMINUM
CATALOGS AND WEBSITE'S
LOAD CHARTS FOR SIZING
GUIDELINES.



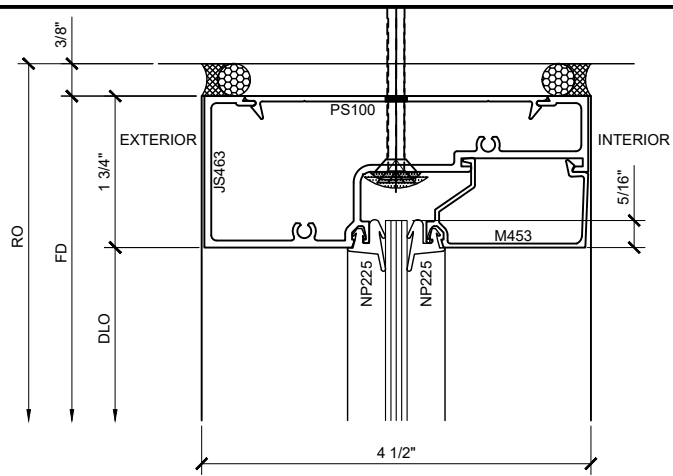
Revisions By:

CRL
U.S. ALUMINUM
C.R. LAURENCE CO. ARCHITECTURAL PRODUCTS
2503 E. Vernon Avenue, Los Angeles, CA 90038-1897
PH: (800)-421-6144 FX: (800)-867-7501 www.crlaurence.com

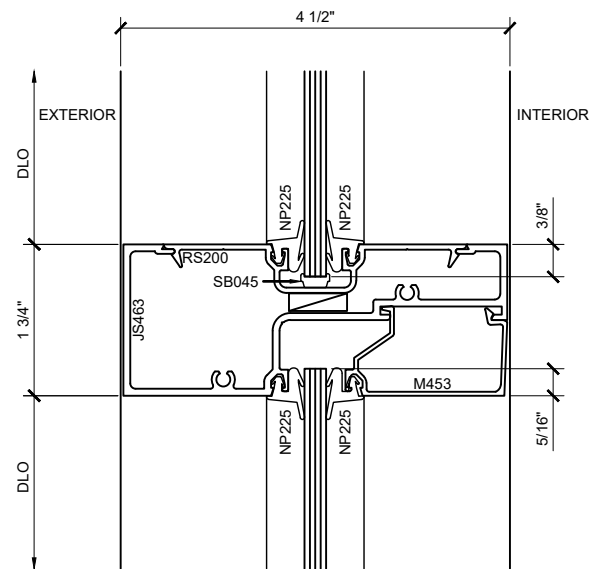
Description:
U.S. ALUMINUM
SERIES 450 CENTER GLAZED
STOREFRONT SYSTEM

Drawn By: AAD
Date: 12/14/12
Scale: AS NOTED
File Name: SF 450

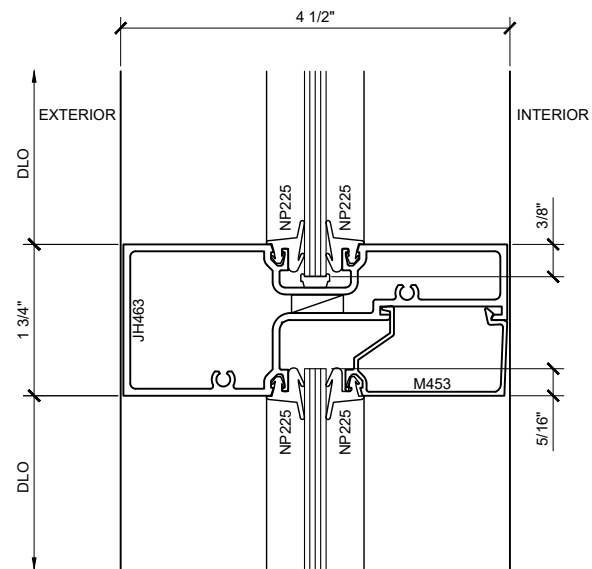
Sheet



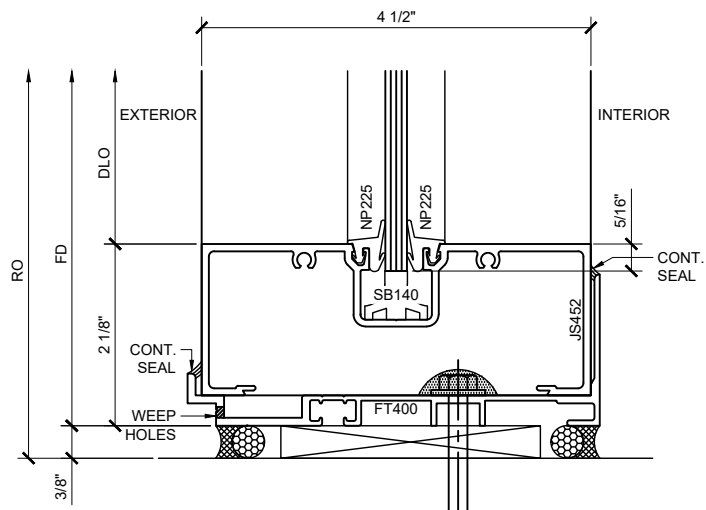
SECTION DETAIL AT HEAD ①



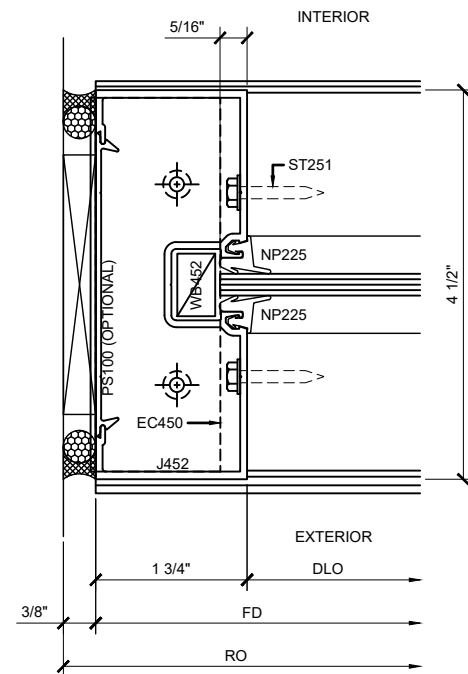
SECTION DETAIL AT INTERMEDIATE HORIZONTAL ②



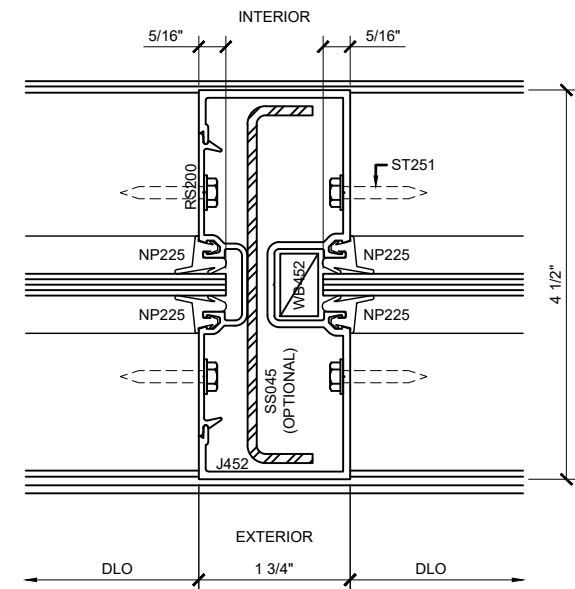
SECTION DETAIL AT INTERMEDIATE HORIZONTAL ③



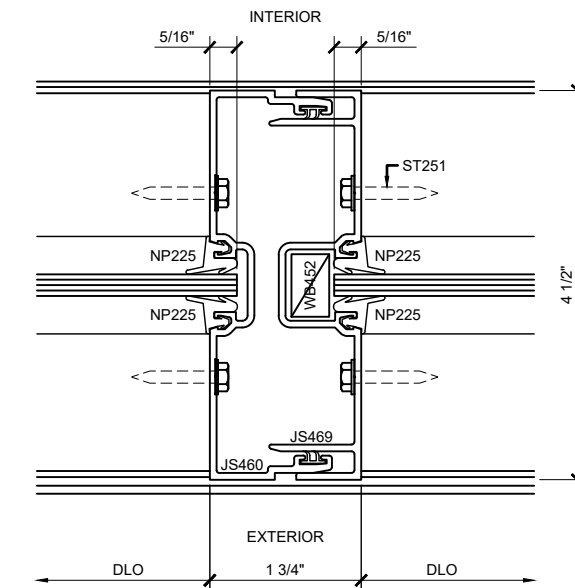
SECTION DETAIL AT SILL ④



SECTION DETAIL AT JAMB ⑤



SECTION DETAIL AT INTERMEDIATE VERTICAL ⑥



SECTION DETAIL AT EXPANSION MULLION ⑦

SERIES 450 CENTER / INTERIOR GLAZED SCREW SPLINE STOREFRONT SYSTEM

Revisions By:

U.S. ALUMINUM
C.R. LAURENCE CO. ARCHITECTURAL PRODUCTS
2503 E. Vernon Avenue, Los Angeles, CA 90058-1897
PH: (800)-421-6144 FX: (800)-867-7501 www.crlaurence.com

Description:
**U.S. ALUMINUM
SERIES 450 CENTER GLAZED
STOREFRONT SYSTEM**

Drawn By: AAD
Date: 12/14/12
Scale: AS NOTED
File Name: SF 450

Sheet