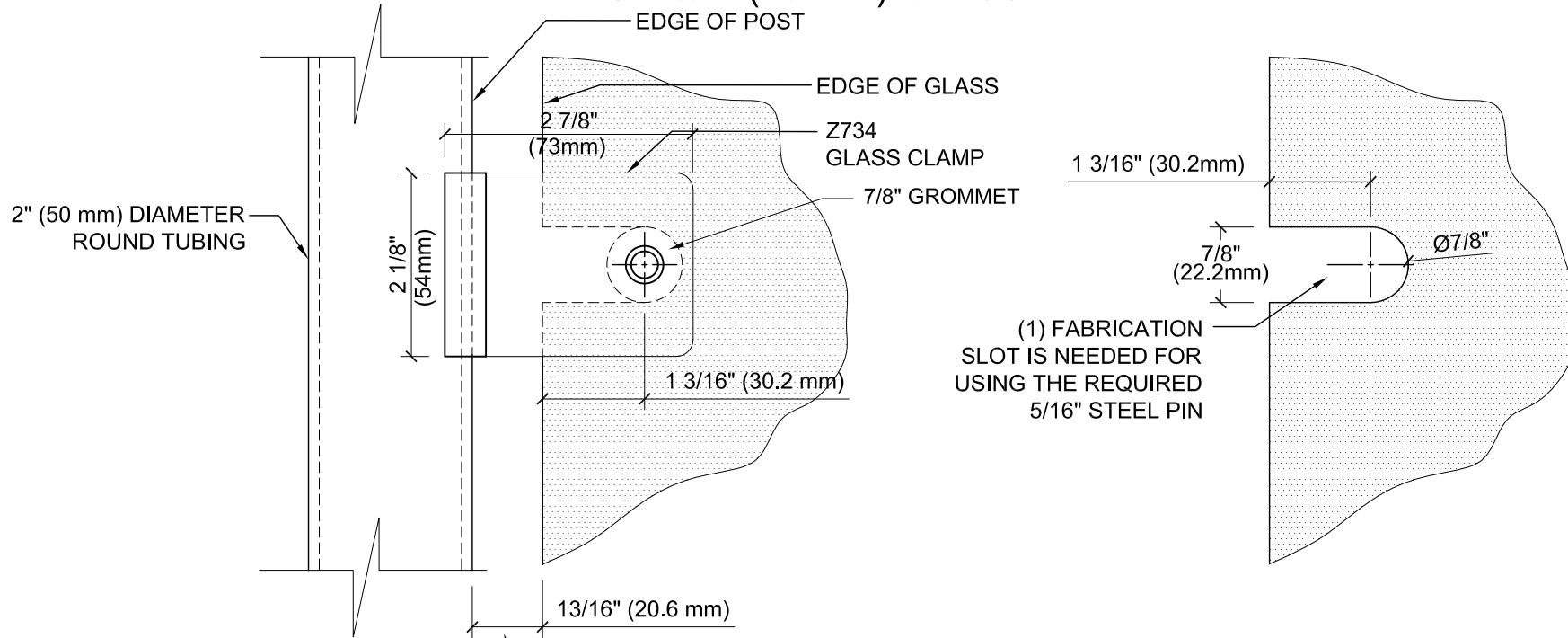


GLASS FABRICATION TEMPLATE FOR THE Z-SERIES SQUARE TYPE RADIUS BASE CLAMPS FOR 3/4" (19 mm) GLASS

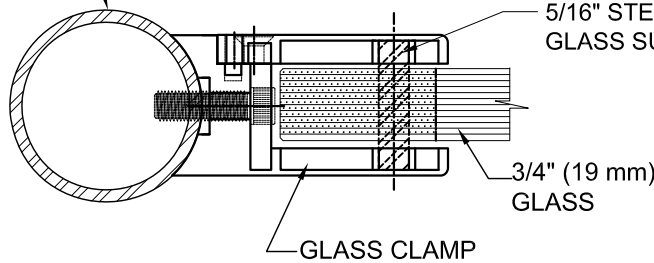


(1) FABRICATION
SLOT IS NEEDED FOR
USING THE REQUIRED
5/16" STEEL PIN

ALWAYS USE DIMENSIONS SHOWN ON THE PLAN.
DO NOT SCALE OR DIMENSION ACTUAL DRAWING
TO ENSURE ACCURACY

2" (50 mm) DIAMETER
ROUND TUBING

CRL'S STANDARD RECOMMENDED
(GLASS GAP) BETWEEN POST AND
EDGE OF GLASS



GLASS FABRICATION TEMPLATE USED FOR:

CATALOG NUMBER	TUBE DIA
Z734BS	2" (50.8 mm)
Z734PS	2" (50.8 mm)

SPECIFICATIONS:

GLASS THICKNESS: MODELS FOR 3/4" (19 mm) GLASS.

BASE DESIGN: RADIUS BACK

FOR USE WITH: 1.9" AND 2" (48.3mm and 50.8mm) DIAMETER ROUND TUBING ONLY.

MATERIAL: 316 STAINLESS STEEL BRUSHED AND POLISHED FINISHES

GLASS FABRICATION: FOR 3/4" (19 mm) THICK GLASS. 7/8" (22mm) DIAMETER FINGER SLOT NEEDED FOR USING REQUIRED STEEL PIN FOR GLASS SUPPORT.

INCLUDES: RUBBER GASKETS AND REQUIRED STEEL PIN WITH GROMMET.

DESCRIPTION:
Z-SERIES SQUARE TYPE RADIUS BASE GLASS CLAMP
FOR 3/4" (19 mm) THICK GLASS

CAT. NO: (SEE CHART)	DATE: 09/16/11
FILE NAME: Z734-Gls Fab	SCALE: 1/2"=1'-0"
DRAWN BY: R.D.	CHECKED BY: C.H.
SHT 1 OF 1	



ARCHITECTURAL PRODUCTS
PH: 800-421-6144 FX: 800-262-3299
WWW.CRLAURENCE.COM