



STOREFRONTS

SERIES 450 CENTER GLAZED STOREFRONT SYSTEM POST COVERS

450 SERIES SPECIFICATIONS

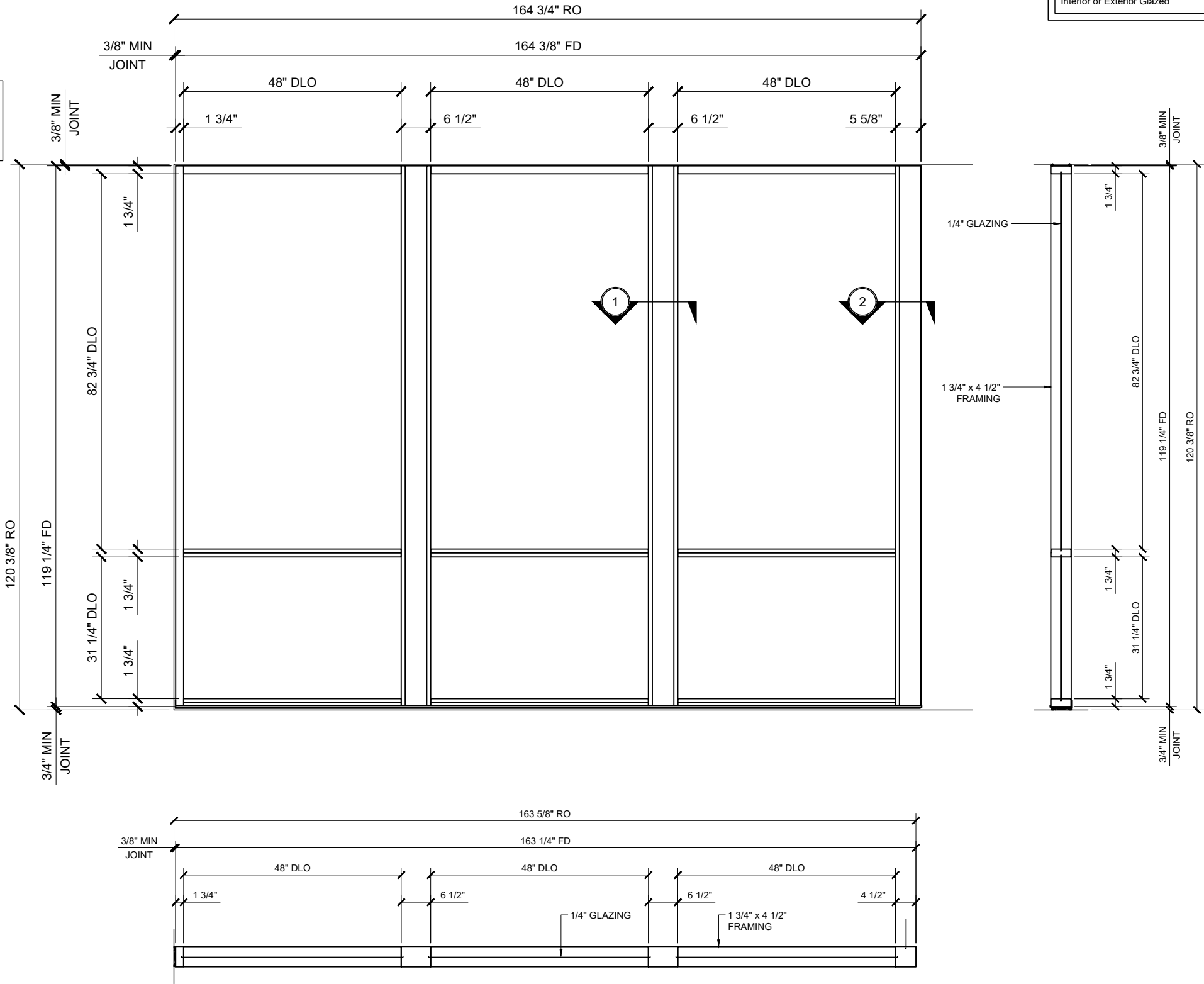
Fabrication and installation labor costs have always been a decisive factor in selecting framing systems for storefront projects. U.S. Aluminum offers cost efficient versatile Center Glazed Systems with clean lines and superb performance. Series 450 may be interior or exterior glazed. A top load E.P.D.M. gasket is used to position and weatherseal the glass in the aluminum pocket. Center Glazed Systems are compatible with most U.S. Aluminum entrance doors.

- 1 3/4" x 4 1/2" frame
- 1/4" Glazing infill
- Full range of accessory components
- Available in an array of architectural coatings and anodized finishes
- Screw spline assembly
- Shear block assembly
- Stacking installation option
- Interior or Exterior Glazed

STRUCTURAL DISCLAIMER:

ALL CUSTOMERS WHO IN ANY WAY UTILIZE THIS PRODUCT ARE SOLELY RESPONSIBLE TO CONSULT A STRUCTURAL ENGINEER TO DETERMINE THE SUITABILITY OF THE PRODUCT FOR THE INTENDED USE AND SITE CONDITIONS. ALL INSTALLERS MUST BE QUALIFIED AND HAVE PROFESSIONAL KNOWLEDGE ABOUT COMPLIANCE WITH LOCAL, STATE AND FEDERAL REGULATIONS, SAFETY FACTORS, AND THE APPROPRIATE CHOICE OF FIXING MATERIAL AND PROCEDURES.

GLASS SIZING NOTE:
REFERENCE U.S. ALUMINUM
CATALOGS AND WEBSITE'S
LOAD CHARTS FOR SIZING
GUIDELINES.



STANDARD ABBREVIATIONS

RO	ROUGH OPENING
FD	FRAME DIMENSION
DLO	DAYLITE OPENING
DO	DOOR OPENING
DD	DOOR DIMENSION
SMC	SURFACE MOUNTED CLOSER
OHCC	OVERHEAD CONCEALED CLOSER

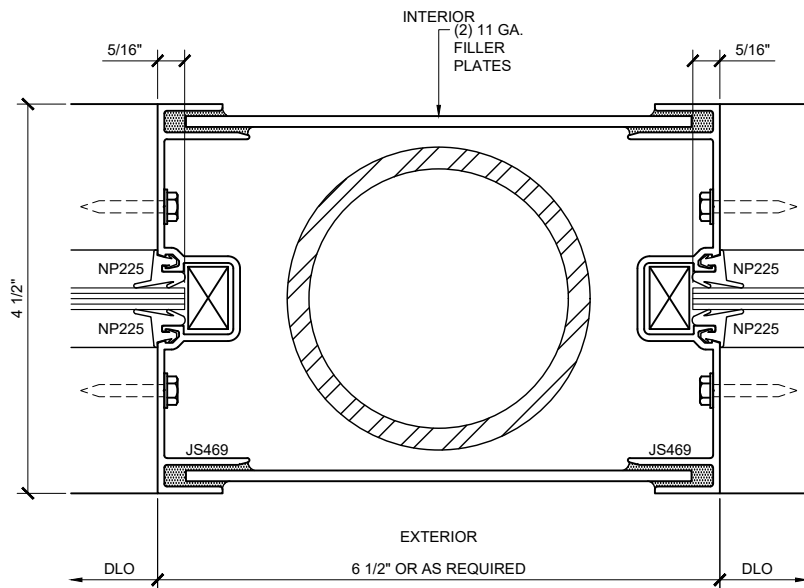
Revisions By:

U.S. ALUMINUM
C.R. LAURENCE CO. ARCHITECTURAL PRODUCTS
2503 E. Vernon Avenue, Los Angeles, CA 90038-1897
PH: (800)-421-1414 FX: (800)-807-7501 www.crlaurence.com

Description:
U.S. ALUMINUM
SERIES 450 CENTER GLAZED
STOREFRONT SYSTEM

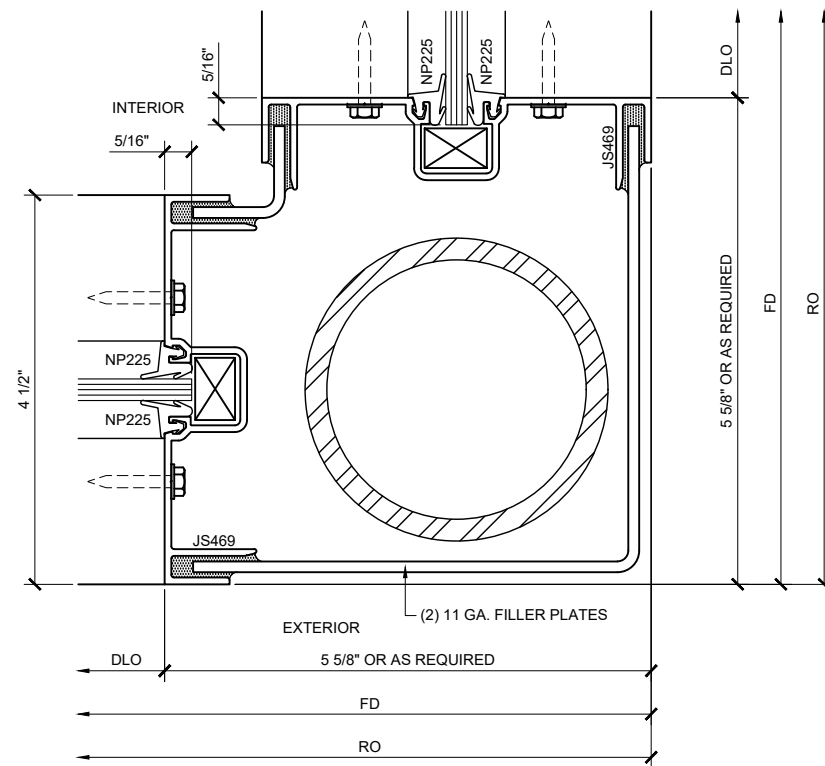
Drawn By: AAD
Date: 12/14/12
Scale: AS NOTED
File Name: SF 450

Sheet



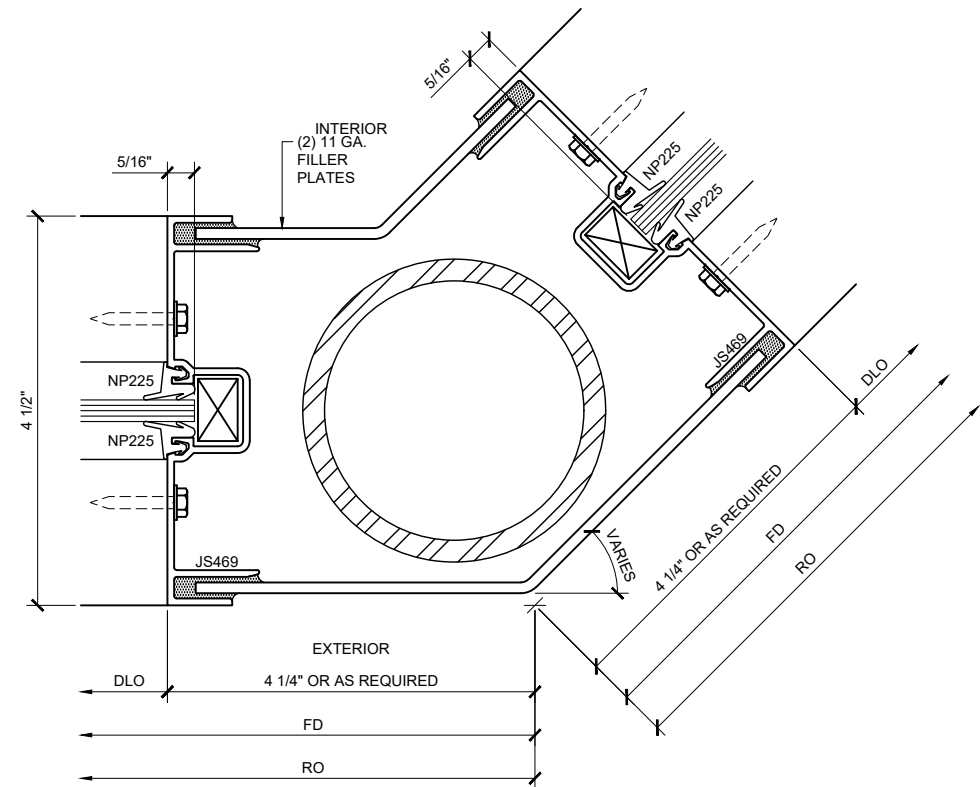
SECTION DETAIL AT INTERMEDIATE POST COVER

1



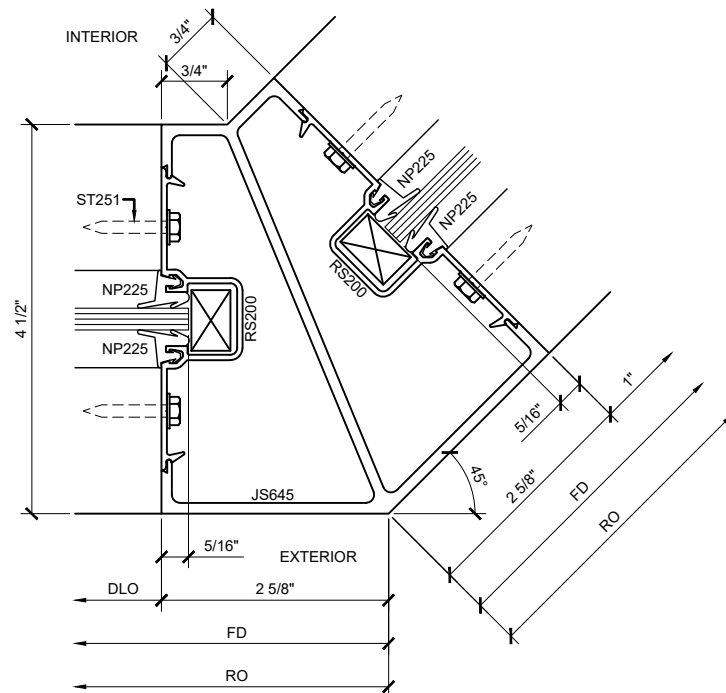
SECTION DETAIL AT 90° CORNER POST COVER

2



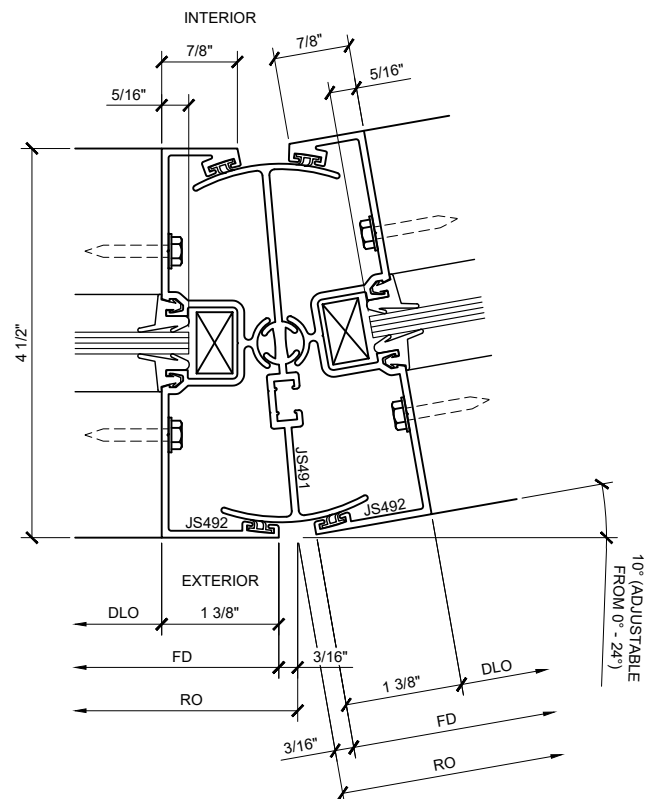
SECTION DETAIL AT ADJUSTABLE ANGLE POST COVER

3



SECTION DETAIL AT 45° CORNER

4



SECTION DETAIL AT ADJUSTABLE ANGLE POST COVER

5

Revisions By:

U.S. ALUMINUM
C.R. LAURENCE CO. ARCHITECTURAL PRODUCTS
2503 E. Vernon Avenue, Los Angeles, CA 90058-1897
PH: (800)-421-6144 FX: (800)-987-7501 www.crlaurence.com

Description:
U.S. ALUMINUM
SERIES 450 CENTER GLAZED
STOREFRONT SYSTEM

Drawn By: AAD
Date: 12/14/12
Scale: AS NOTED
File Name: SF 450

Sheet

6.2