



The Pinnacle of Aesthetics and Performance

The evolution of glass entrances is here. The Entice HP+ Glass Entrance System introduces engineering advancements that surpass industry standards in aesthetics and performance. Monumental glass doors spanning 10 feet tall and 4 feet wide can be specified with ultra-narrow 1-5/8" door stiles to convey a grand entrance and heavy-glass visuals.

As an AAMA CW Performance Class rated system with 1" insulating glass and a distinct full perimeter seal, Entice HP+ offers year-round, all-weather performance that asserts its status as a next-generation glass entrance. Structural enhancements have also given the system greater wind load capacities.

CRL | Entice® HP+ Features and Benefits

The cutting edge Entice HP+ Glass Entrance System combines visual appeal with a myriad of high-performance details to set the new standard in glass entrance system design. A high OITC rating and no gaps around doors effectively mitigates exterior sound.

AESTHETICS

- Ultra-narrow 1-5/8" door stiles
- Slim 2-7/8" system depth
- No glass stop break lines
- Max door height: 10' recommended
- Max door width: 4' recommended
- Handle hardware mounts onto insulating glass
- Top rail: 4" square
- Bottom rail: 4" or 10" square
- Premium cladding in customizable finishes
- Offset continuous gear hinge
- Compatible with bird glass

PERFORMANCE

- AAMA CW-PG30-LW Performance Class rating
- Thermally broken stiles, jambs, and threshold
- Full perimeter seal around doors
- 1" dual-pane insulating glass
- Tested to 1,000,000 cycles
- 760 lb rated continuous gear hinge
- Design Pressure of ± 30 psf (4' x 10' door)
- Vertical load resistance: Passes @ 250 lbf (4' x 10')
- Air infiltration: 0.16 cfm/ft² @ 1.57 psf
- Aluminum 6063-T5/T6 construction
- California Title 24 compliant (glass permitting)

Test Results



Air Infiltration

Exceeds ASHRAE 90.1-2022 air infiltration requirements

0.16 cfm/ft²
@ 1.57 psf



Uniform Load Deflection

Meets AAMA 101 L/175 deflection criteria

Design Pressure Differential

Positive

Negative

@ **30** psf



@ **30** psf

Refer to windload diagram and structural report



Water Penetration

Tested to AAMA 101 in accordance with ASTM E331

No uncontrolled water entry
(Limited Water Test)



Thermal Performance

U-factor as low as 0.37

Tested in accordance with ANSI/NFRC 100-200-CMA



Acoustic Performance

ASTM E90 and E1425

37 STC, **32** OITC

1/4" monolithic glass
3/8" airspace
3/8" laminated glass



Life Cycle Performance

Meets AAMA 920 criteria

Tested to
1,000,000 cycles



Forced Entry Resistance

Passes AAMA-1304 @ 300 lbf
with no entry

CRL | Entice® HP+ All-Weather Performance

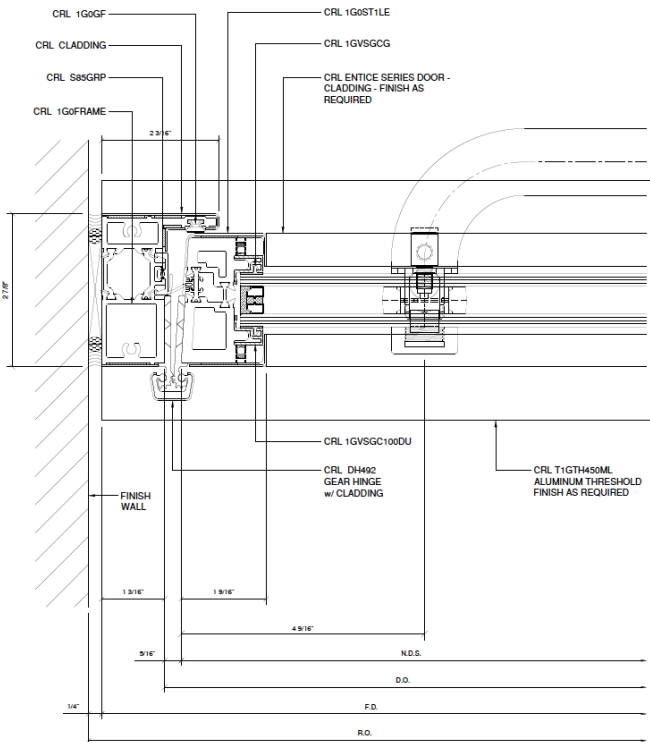
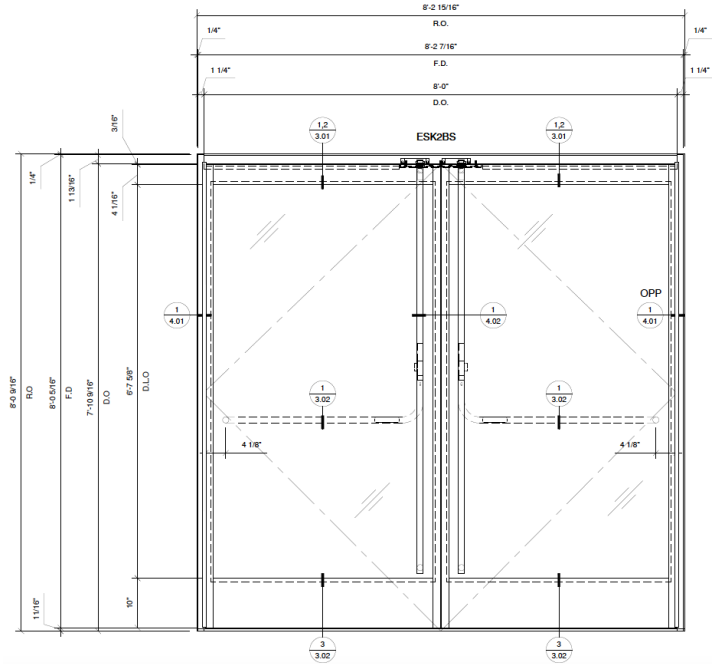
One of the key advantages of the Entice HP+ system is its ability to perform under year-round weather conditions. A full perimeter seal integrated into the framing provides superior air and water infiltration resistance. In addition, thermally broken components coupled with 1-inch insulating glass help keep interiors warm during the winter and cool during the summer to reduce energy consumption from HVAC systems.



- Full perimeter seal around doors prevents air and water infiltration
- Design Pressure of 30 psf to effectively withstand high wind loads
- Exceptional thermal performance helps maintain ideal interior temperatures
- AAMA CW Performance Class rating makes Entice HP+ well-suited for exterior applications where high loads, limits on deflection, and heavy use are expected
- Meets California Title 24 thermal performance requirements (glass permitting)

CRL | Entice® HP+ System Drawings

Exterior Elevation With Full Perimeter Seal



Door Jamb at Wall With Continuous Gear Hinge

Standard Finishes

Satin anodized, black bronze anodized, brushed stainless steel, polished stainless steel, satin brass, polished brass, matte black powder coat

