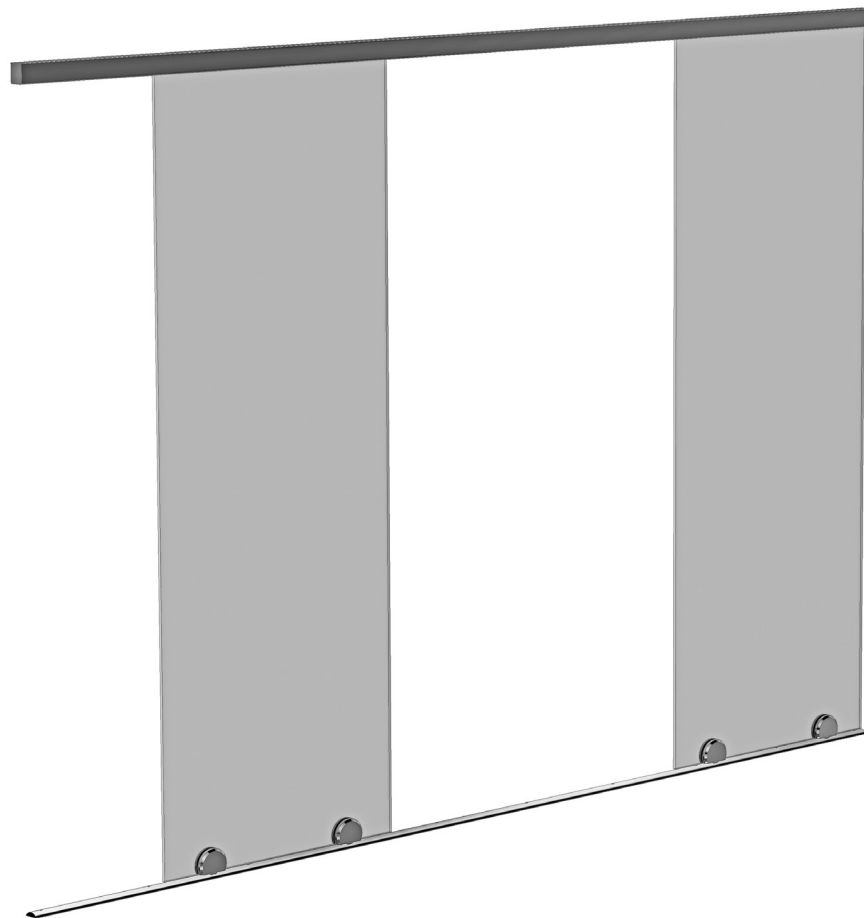
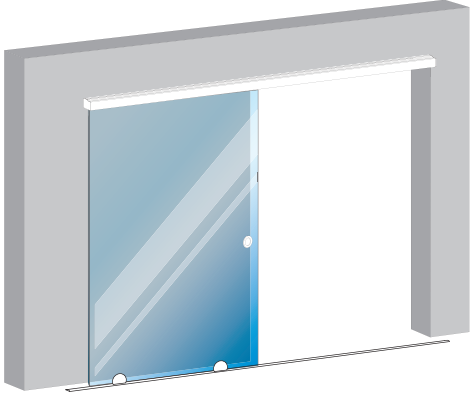
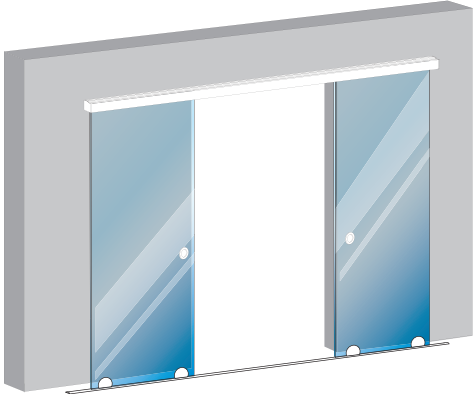
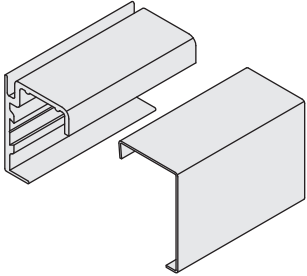
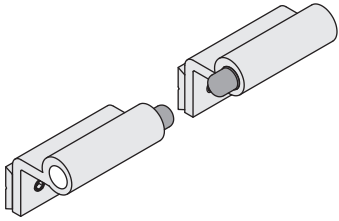
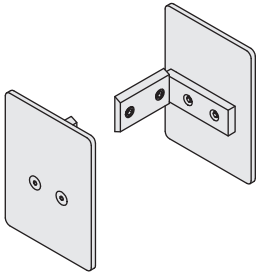
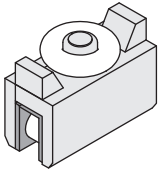
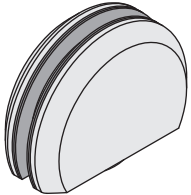
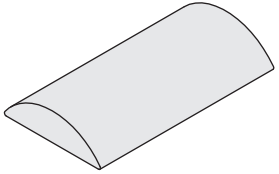


**GSDH SERIES
BOTTOM ROLLING DOOR
SYSTEM**



PARTS LIST

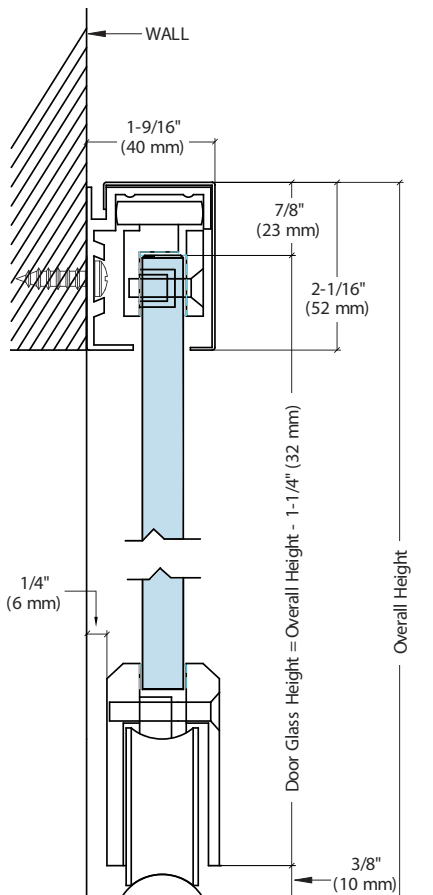
<p style="text-align: center;">GSDH1</p>  <p>Kit Contains: 1 GSDH140, 1 GSDH160, 1 GSDH130, 1 GSDH150, 2 GSDH120, 2 GSDH100</p> <p style="text-align: center;">GSDH1 Series Single Rolling Door Kit</p>	<p style="text-align: center;">GSDH2</p>  <p>Kit Contains: 1 GSDH140, 1 GSDH160, 1 GSDH130, 2 GSDH150, 4 GSDH120, 4 GSDH100</p> <p style="text-align: center;">GSDH2 Series Bi-Parting Rolling Door Kit</p>	
<p style="text-align: center;">GSDH140</p>  <p style="text-align: center;">Top Track with Cover</p>	<p style="text-align: center;">GSDH150</p>  <p style="text-align: center;">Top Track Stop</p>	<p style="text-align: center;">GSDH160</p>  <p style="text-align: center;">Top Track End Cap</p>
<p style="text-align: center;">GSDH120</p>  <p style="text-align: center;">Top Track Roller Guide</p>	<p style="text-align: center;">GSDH100</p>  <p style="text-align: center;">Bottom Roller</p>	<p style="text-align: center;">GSDH130</p>  <p style="text-align: center;">Bottom Track</p>

IMPORTANT: READ THIS MANUAL THOROUGHLY BEFORE BEGINNING INSTALLATION.

ORDER OF ASSEMBLY AND INSTALLATION

PARTS LIST	2
SPECIFICATIONS	3
GLASS FABRICATION	4
DOOR ASSEMBLY	5
Install Top Roller Guides	5
Install Bottom Rollers	5
INSTALLATION	6 - 8
Install Top Track	6
Install Bottom Track	6
Install Interior Stops (Bi-Parting Doors Only)	7
Install Doors	7
Install Exterior Stops	8
Install End Caps and Track Cover	8
CARE AND CLEANING OF STAINLESS STEEL	9
JOB SITE ESSENTIALS	10

SPECIFICATIONS



Single Door

Maximum Weight: 286 pounds (130 kg)

Maximum Width: 60" (1524 mm)

Two Bi-Parting Doors

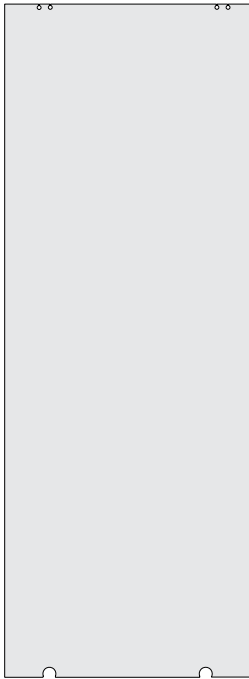
Maximum Weight Each: 143 pounds (65 kg)

Maximum Width Each: 30" (762 mm)

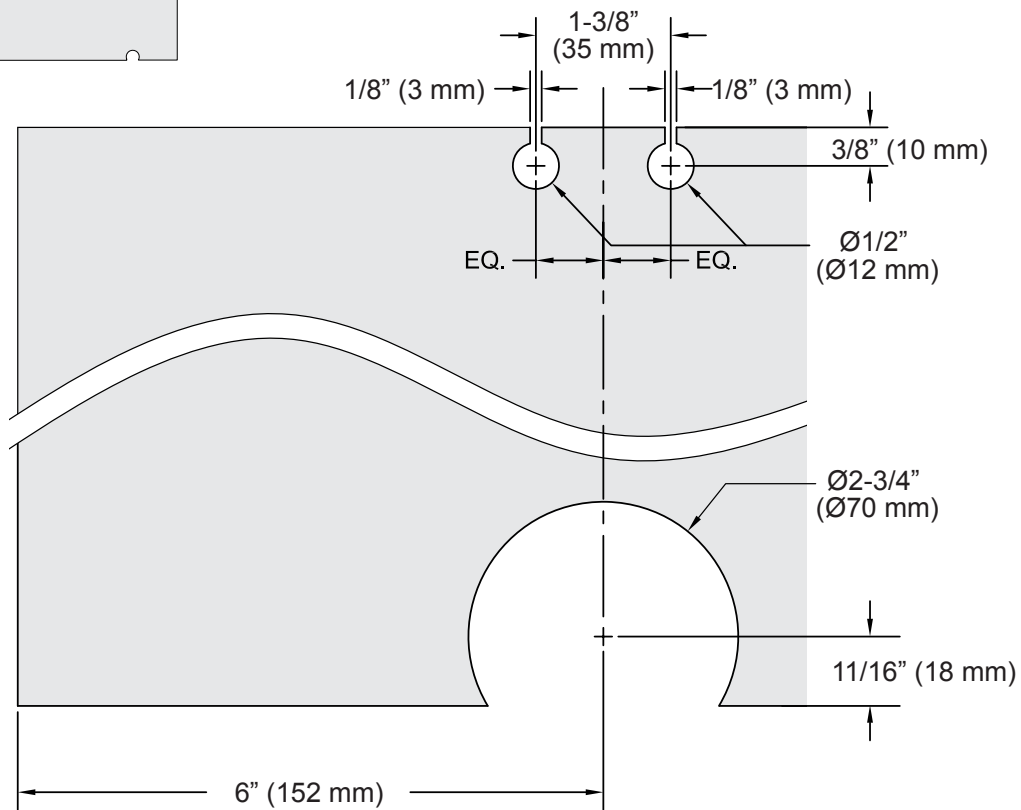
For use with $5/16\text{'}$, $3/8\text{'}$ or $1/2\text{'}$ (8, 10 or 12 mm) Tempered Glass.

NOTE: DO NOT use Laminated Glass.

GLASS FABRICATION

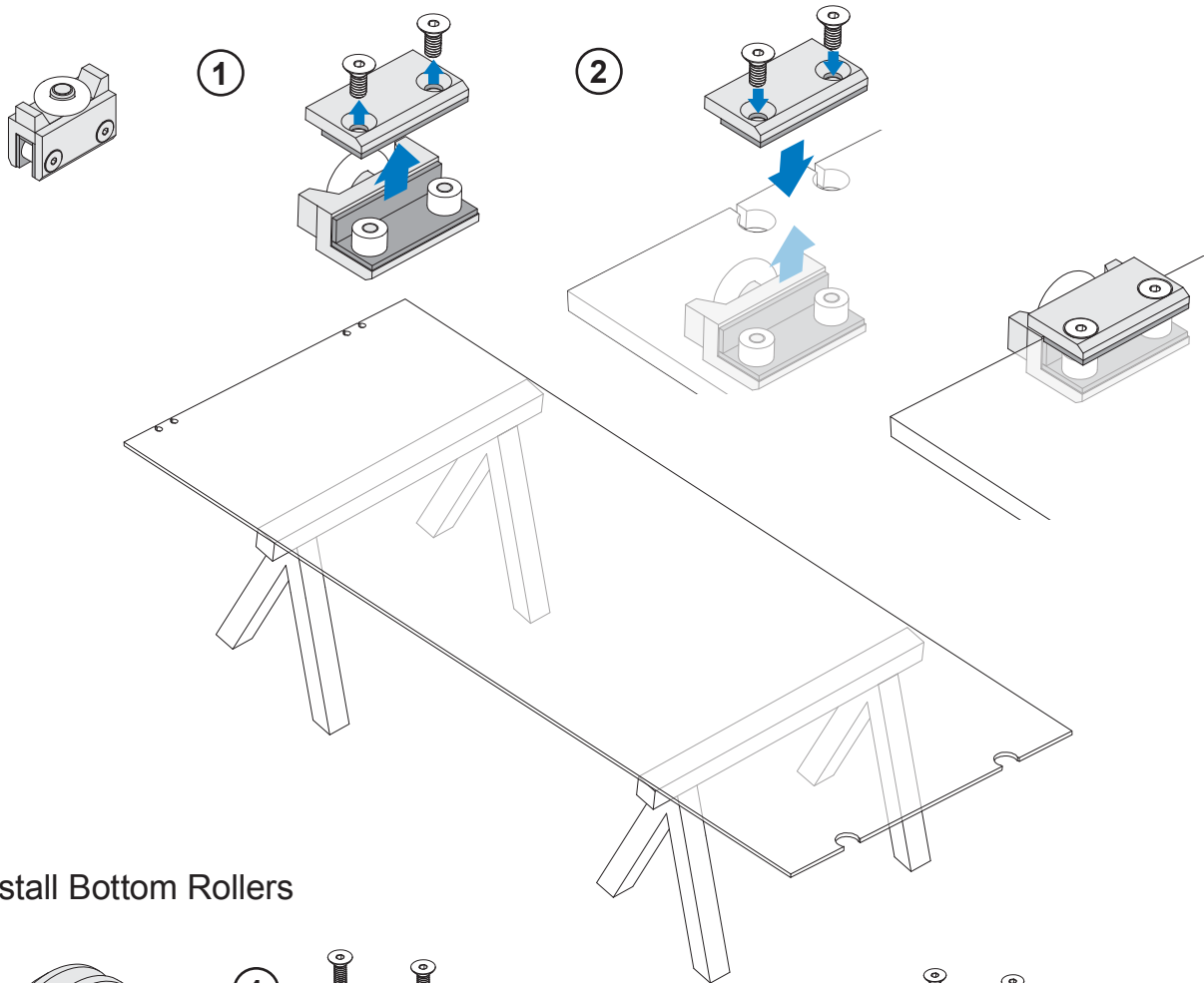


For use with 5/16", 3/8" or 1/2" (8, 10 or 12 mm) Tempered Glass.
 NOTE: DO NOT use Laminated Glass.

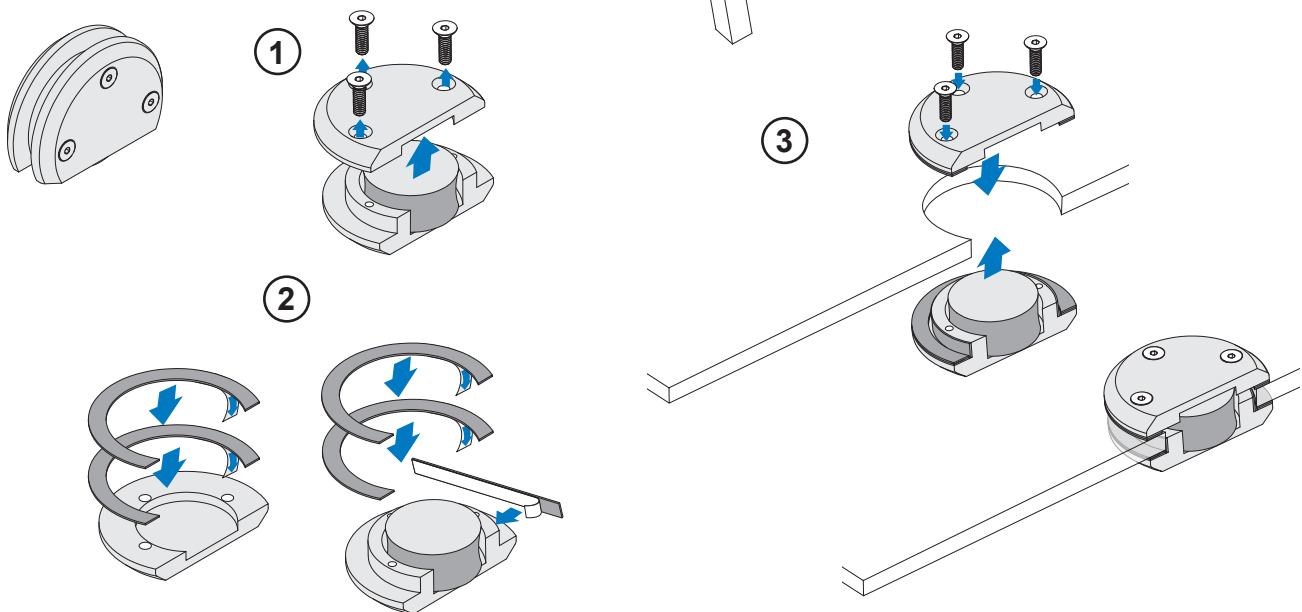


DOOR ASSEMBLY

1. Install Top Roller Guides



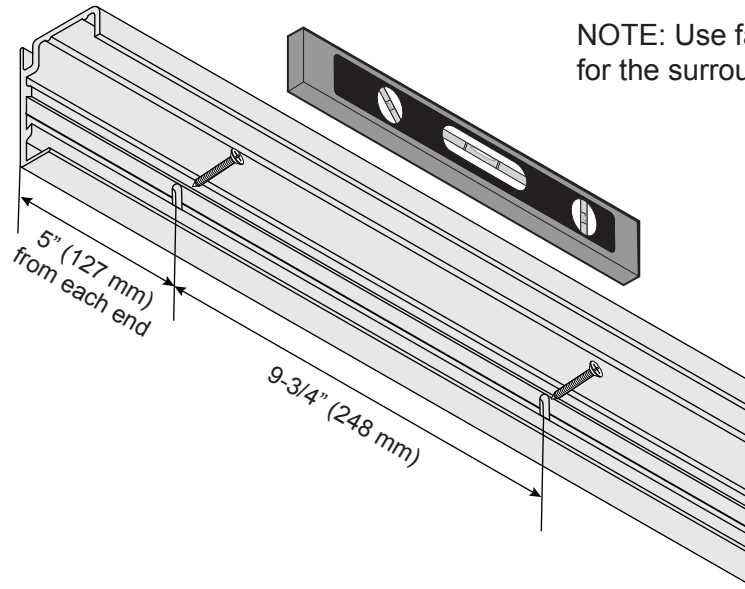
2. Install Bottom Rollers



NOTE: Side with screws will face the inside when the glass is installed.

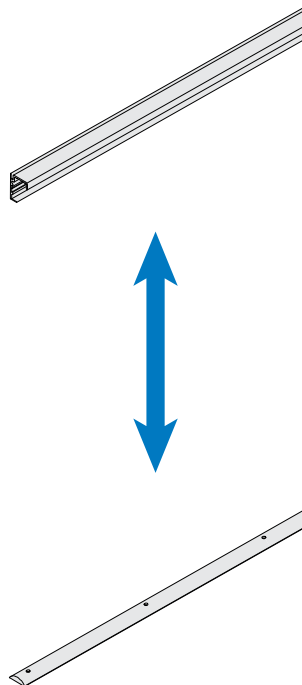
INSTALLATION

1. Install Top Track

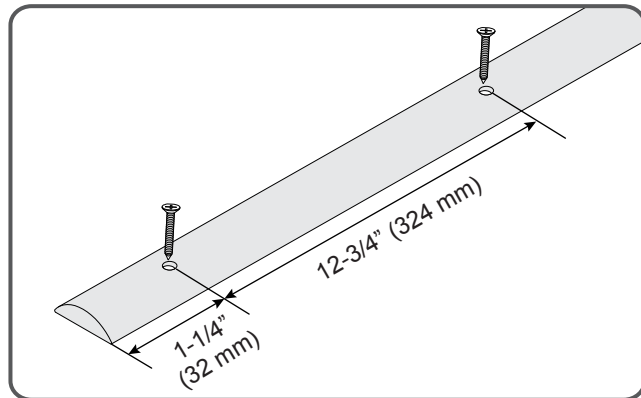


Level Top Track and fasten to wall using included screws in slotted holes. Holes are spaced 5" (127 mm) from each end and 9-3/4" (248 mm) in between.

2. Install Bottom Track



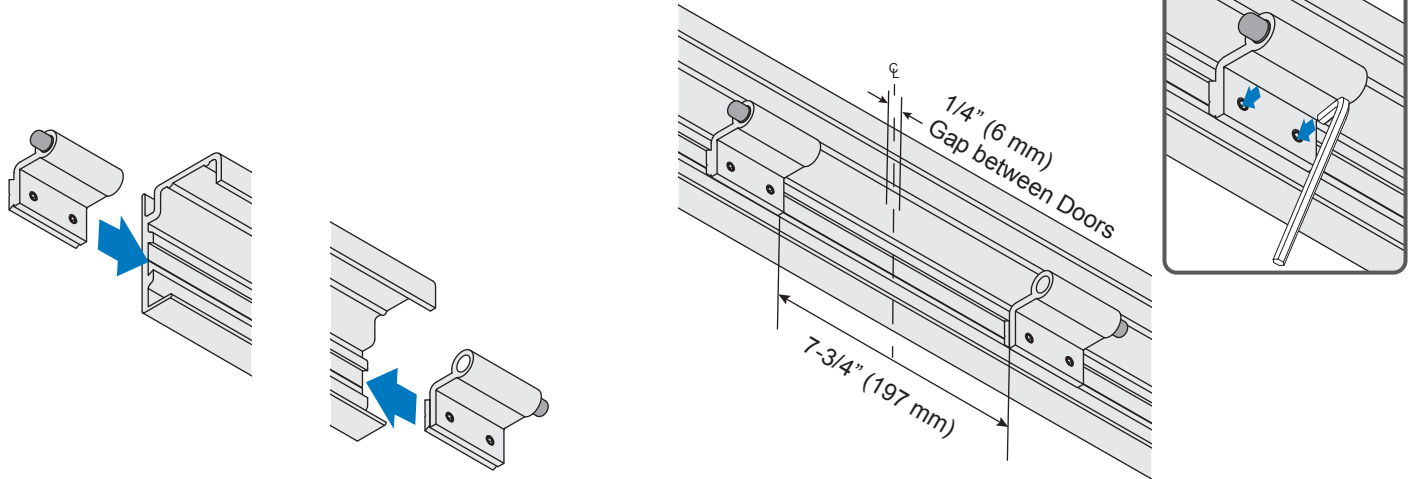
NOTE: Use fasteners appropriate for the surrounding substrate.



Install Bottom Track centered below Top Track. Screw fasteners into predrilled holes to secure.

INSTALLATION (CONTINUED)

3. Install Inboard Stops (Bi-Parting Doors Only)

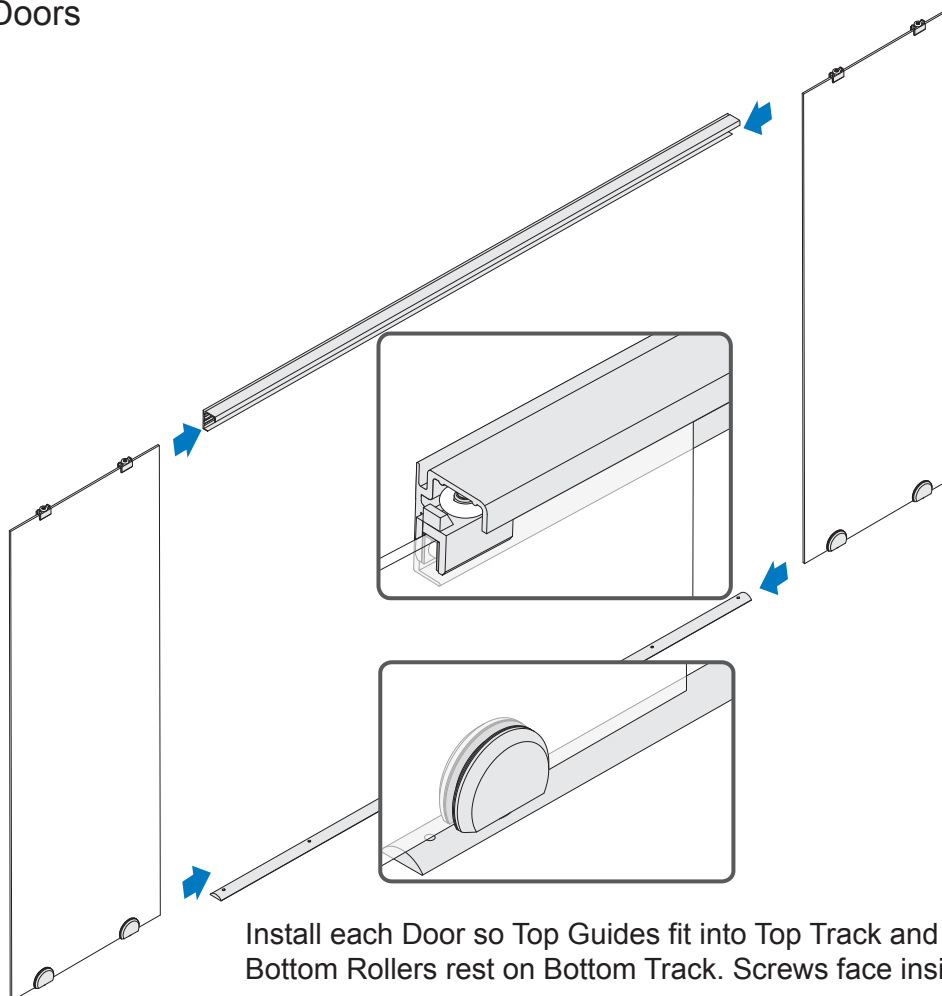


With the rubber bumper facing away from end of Track, slide one Stop into each end of Top Track.

Slide Stops to center of Track where doors meet and position with a 7-3/4" (197 mm) gap between them. Tighten Set Screws to secure.

NOTE: Gap between Stops is based on 1/4" (6 mm) gap between the doors.

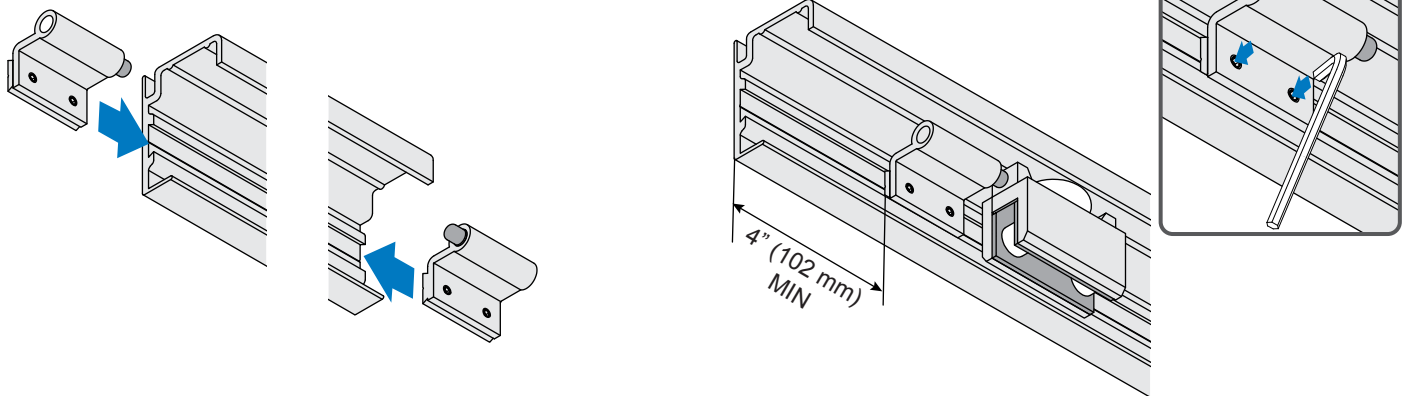
4. Install Doors



Install each Door so Top Guides fit into Top Track and Bottom Rollers rest on Bottom Track. Screws face inside.

INSTALLATION (CONTINUED)

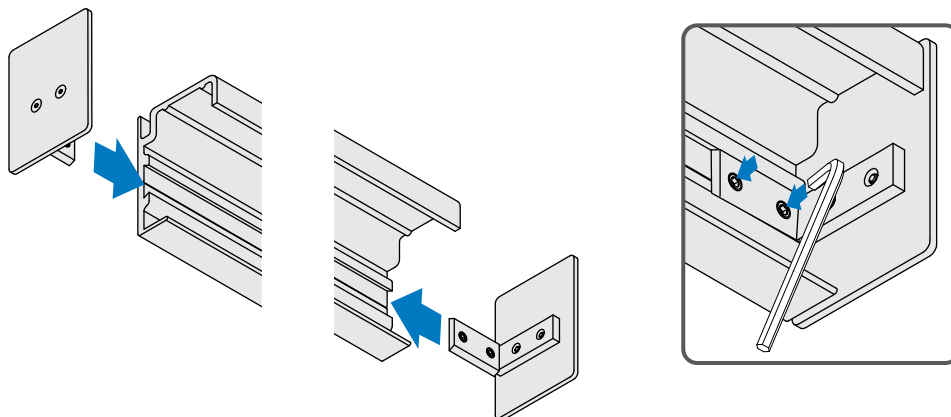
5. Install Outboard Stops



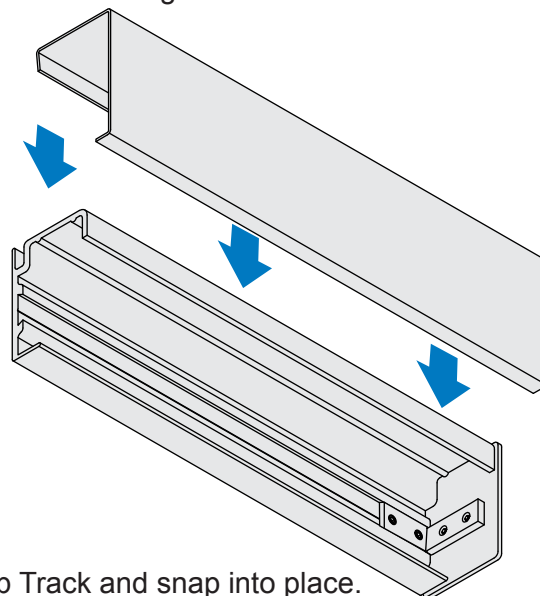
With the rubber bumper facing end of Track, slide one Stop into each end of the Top Track.

Move doors into open position. Slide each Stop next to Top Guide, at least 4" (102 mm) from the end of Track. Tighten Set Screws to secure.

6. Install End Caps and Track Cover



Slide End Cap into Top Track and tighten Set Screws to secure.



Fit Track Cover into Top Track and snap into place.

CARE AND CLEANING OF STAINLESS STEEL

Satin polished Stainless Steel is one of the most durable and easiest finishes to maintain. Although stainless steel is generally resistant to corrosion, the surface is susceptible to cosmetic deterioration by the effects of salt water and air-borne chemicals which may result in small brown spots appearing on its surface (this process is likely to be accelerated in coastal areas). These spots in no way affect the strength, integrity or longevity of the product, they are simply superficial discolorations that require cleaning to restore the stainless steel to its original appearance.

Stainless steel finishes should be cleaned with rubbing motions in the same direction as the grain texture with a foam spray cleaner, such as **CRL Cat. No. CRL841** Stainless Steel Polish & Cleaner, which cleans, polishes and protects stainless steel without hard rubbing and polishing. A coating of CRL841 resists finger prints, grease and water splatter, and helps preserve the factory finish.

Wipe with a clean, dry cloth such as **CRL Cat. No. 1550** Lint-Free Glass Wipes, which are made with four plies of strong, white paper and reinforced in both directions with an extra ply of tough nylon. These highly absorbent rugged wipes will stand up to the most demanding shop work.

For repair of damaged finishes, satin stainless steel can be rubbed with an abrasive pad, such as **CRL Cat. No. SB7447F** - CRL 3M™ Scotch-Brite™ Fine Pad

Stainless steel finishes should be rubbed in the same direction as the grain texture.

For **LONG TERM PROTECTION** and use on **REPAIRED AREAS**, CRL offers an unsurpassed surface treatment system specifically designed to protect both glass and stainless steel.

CRL 6K Hydrophobic Surface Protection product is a two-step system.

Step One: **CRL Cat. No. PC6025** - 6K Pre-Clean Solution (250 ml bottle)

Step Two: **CRL Cat. No. 6K6025** - 6K Protectant Formula (250 ml bottle)

Proper application of the 6K System will offer surface protection for up to three years.

Visit crlaurence.com for more details.

JOB SITE ESSENTIALS

Helpful Tools and Supplies for Installing CRL Architectural Systems



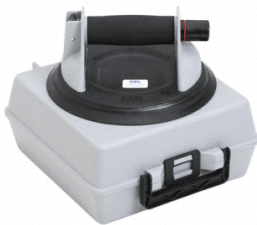
CRL Glass Cleaner
CAT. NO. 1973



CRL Glass Wipes
CAT. NO. 1550



CRL Gloves
CAT. NO. KF1TL



CRL Vacuum Lifter
CAT. NO. S338



CRL Magnetic Level
CAT. NO. LEV9



CRL Tape Measure
CAT. NO. 54225



CRL Stainless Steel Polish and Cleaner
CAT. NO. CRL841



CRL Stainless Steel Sentry Protection Spray
CAT. NO. CRL845



CRL 3M® Scotch-Brite™ Fine Pad
CAT. NO. SB7447F



CRL 6K Hydrophobic Surface Protection System for Glass and Stainless Steel - Pre-Clean Solution
CAT. NO. PC6025



CRL 6K Hydrophobic Surface Protection System for Glass and Stainless Steel - Protect Formula
CAT. NO. 6K6025



CRL 1.69 Fl. Oz. (50 ml) Bottle Loctite® Threadlocker
CAT. NO. 24231