



STOREFRONTS

ARCTIC FRONT SYSTEM 45X DUAL HIGH PERFORMANCE
THERMALLY BROKEN CENTER GLAZED STOREFRONT

45X SERIES SPECIFICATIONS

Series 45X offers improved thermal performance using the Poly-Aluminizer™. United States Aluminum offers cost efficient versatile Center Glazed Systems with clean lines and superb performance. Series 45X may be interior or exterior glazed. A top load EPDM gasket is used to position and weatherseal the glass in the aluminum pocket.

2" x 4 1/2" frame
1" Glazing infill (SHOWN)
Optional snap-in reducers for 1/4" - 3/4" glass are available
Struct-Link™ thermal break
Full range of accessory components
Available in an array of architectural coatings and anodized finishes
Screw spline assembly
Shear block assembly
Interior or Exterior Glazed

STANDARD ABBREVIATIONS

RO ROUGH OPENING
FD FRAME DIMENSION
DLO DAYLIGHT OPENING
DO DOOR OPENING
DD DOOR DIMENSION
SMC SURFACE MOUNTED CLOSER
OHCC OVERHEAD CONCEALED CLOSER

TABLE OF CONTENTS:

#	SHEET	D E S C R I P T I O N
1	COVER	TABLE OF CONTENTS / SPECIFICATIONS / SPECIAL FEATURES
2	1.01	SERIES 45X EXTERIOR GLAZED SHEAR BLOCK STOREFRONT SYSTEM - PLAN, SECTION, ELEVATION
3	1.02	SERIES 45X EXTERIOR GLAZED SHEAR BLOCK STOREFRONT SYSTEM - DETAILS
4	1.03	SERIES 45X EXTERIOR GLAZED SHEAR BLOCK STOREFRONT SYSTEM - DETAILS
5	1.04	SERIES 45X EXTERIOR GLAZED SHEAR BLOCK STOREFRONT SYSTEM - DETAILS
6	2.01	SERIES 45X INTERIOR GLAZED SHEAR BLOCK STOREFRONT SYSTEM - PLAN, SECTION, ELEVATION
7	2.02	SERIES 45X INTERIOR GLAZED SHEAR BLOCK STOREFRONT SYSTEM - DETAILS
8	2.03	SERIES 45X INTERIOR GLAZED SHEAR BLOCK STOREFRONT SYSTEM - DETAILS
9	2.04	SERIES 45X INTERIOR GLAZED SHEAR BLOCK STOREFRONT SYSTEM - DETAILS
10	3.01	SERIES 45X EXTERIOR GLAZED SCREW SPLINE STOREFRONT SYSTEM - PLAN, SECTION, ELEVATION
11	3.02	SERIES 45X EXTERIOR GLAZED SCREW SPLINE STOREFRONT SYSTEM - DETAILS
12	3.03	SERIES 45X EXTERIOR GLAZED SCREW SPLINE STOREFRONT SYSTEM - DETAILS
13	4.01	SERIES 45X INTERIOR GLAZED SCREW SPLINE STOREFRONT SYSTEM - PLAN, SECTION, ELEVATION
14	4.02	SERIES 45X INTERIOR GLAZED SCREW SPLINE STOREFRONT SYSTEM - DETAILS
15	5.01	SERIES 45X THERMAL FLUSH CENTER-GLAZED STOREFRONT SYSTEM - 90° CORNER PLAN, ELEVATIONS
16	5.02	SERIES 45X THERMAL FLUSH CENTER-GLAZED STOREFRONT SYSTEM - 90° CORNER DETAILS
17	6.01	SERIES 45X THERMAL FLUSH CENTER-GLAZED STOREFRONT SYSTEM - 135° CORNER PLAN, ELEVATIONS
18	6.02	SERIES 45X THERMAL FLUSH CENTER-GLAZED STOREFRONT SYSTEM - 135° CORNER DETAILS
19	7.01	SERIES 45X THERMAL FLUSH CENTER-GLAZED STOREFRONT SYSTEM - OPERABLE WINDOW ELEVATION
20	7.02	SERIES 45X THERMAL FLUSH CENTER-GLAZED STOREFRONT SYSTEM - OPERABLE WINDOW DETAILS

SERIES	WIDTH	OVERALL DEPTH	GLAZING INFILL	APPLICATIONS
45X	2" (50.8)	4-1/2" (114.3)	1/4" (25) THRU 1 1/8" (28.575)	Storefronts in Geographic Areas Requiring Thermal Performance

Revisions By:



Description:

U.S. ALUMINUM
SERIES 45X - DUAL
HIGH PERFORMANCE
THERMALLY BROKEN
STOREFRONT SYSTEM

Drawn By: RPD
Date: 12/11/15
Scale: AS NOTED
File Name: 45X.dwg
Sheet

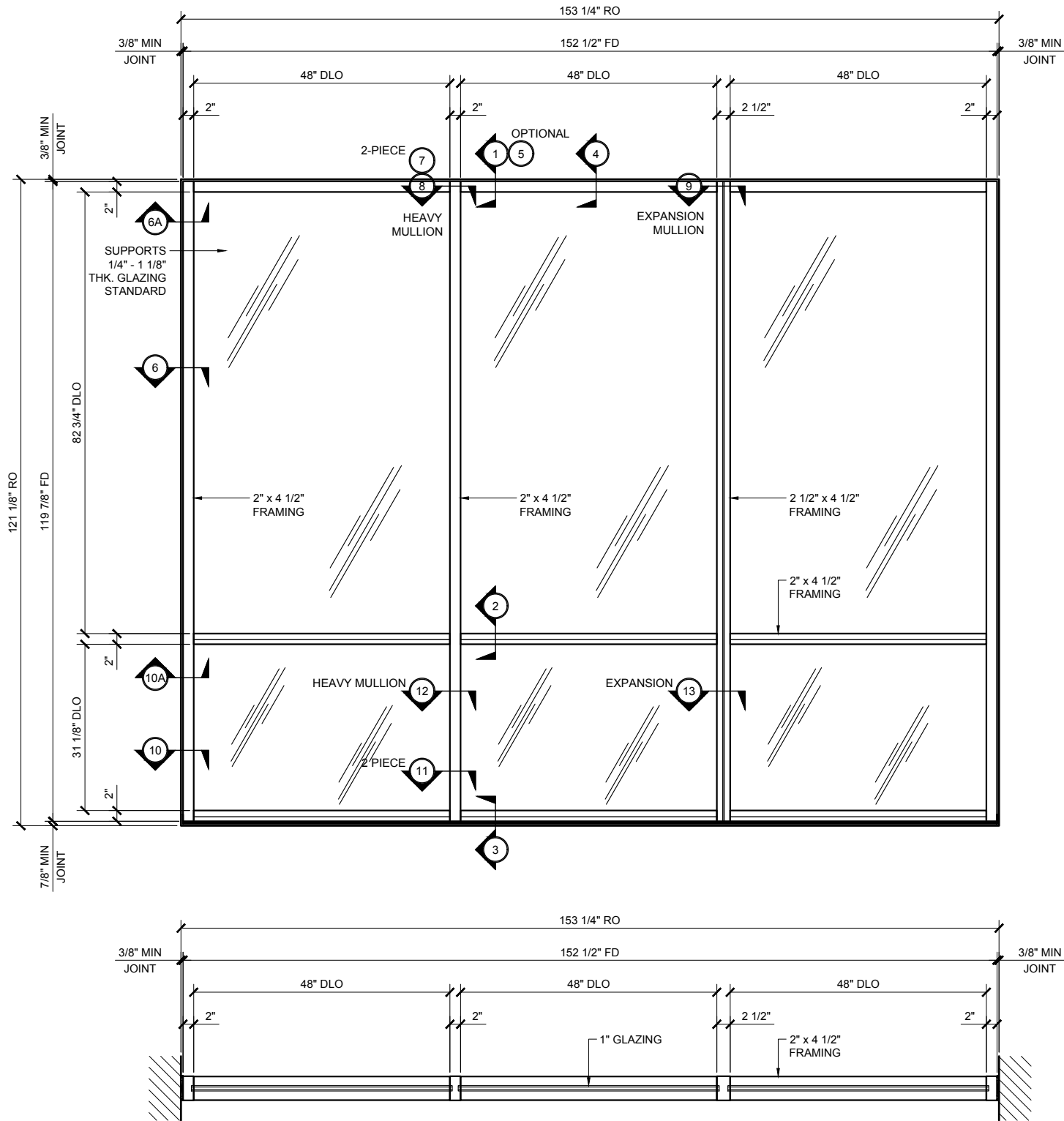
COVER



STOREFRONTS

SERIES 45X CENTER / EXTERIOR GLAZED SHEAR BLOCK STOREFRONT SYSTEM

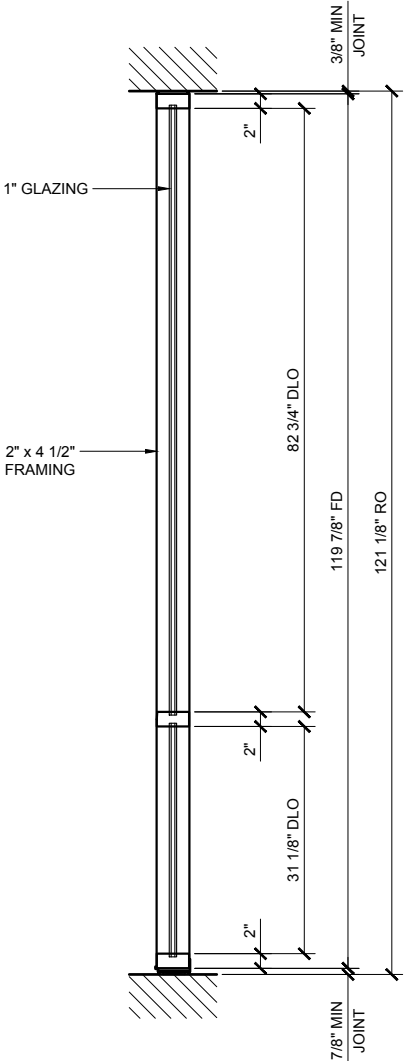
GLASS SIZING NOTE:
REFERENCE U.S. ALUMINUM
CATALOGS AND WEBSITE'S
LOAD CHARTS FOR SIZING
GUIDELINES.



45X SERIES SPECIFICATIONS

Series 45X offers improved thermal performance using the Poly-Aluminizer™. United States Aluminum offers cost efficient versatile Center Glazed Systems with clean lines and superb performance. Series 45X may be interior or exterior glazed. A top load EPDM gasket is used to position and weatherseal the glass in the aluminum pocket.

- 2" x 4 1/2" frame
- 1" Glazing infill (SHOWN) Optional snap-in reducers for 1/4" - 3/4" glass are available
- Struct-Link™ thermal break
- Full range of accessory components
- Available in an array of architectural coatings and anodized finishes
- Screw spline assembly
- Shear block assembly (SHOWN)
- Interior or Exterior Glazed (EXTERIOR GLAZED OPTION SHOWN)



STANDARD ABBREVIATIONS

RO	ROUGH OPENING
FD	FRAME DIMENSION
DLO	DAYLITE OPENING
DO	DOOR OPENING
DD	DOOR DIMENSION
SMC	SURFACE MOUNTED CLOSER
OHCC	OVERHEAD CONCEALED CLOSER

Revisions By:

Description:

U.S. ALUMINUM
SERIES 45X - DUAL
HIGH PERFORMANCE
THERMALLY BROKEN
STOREFRONT SYSTEM

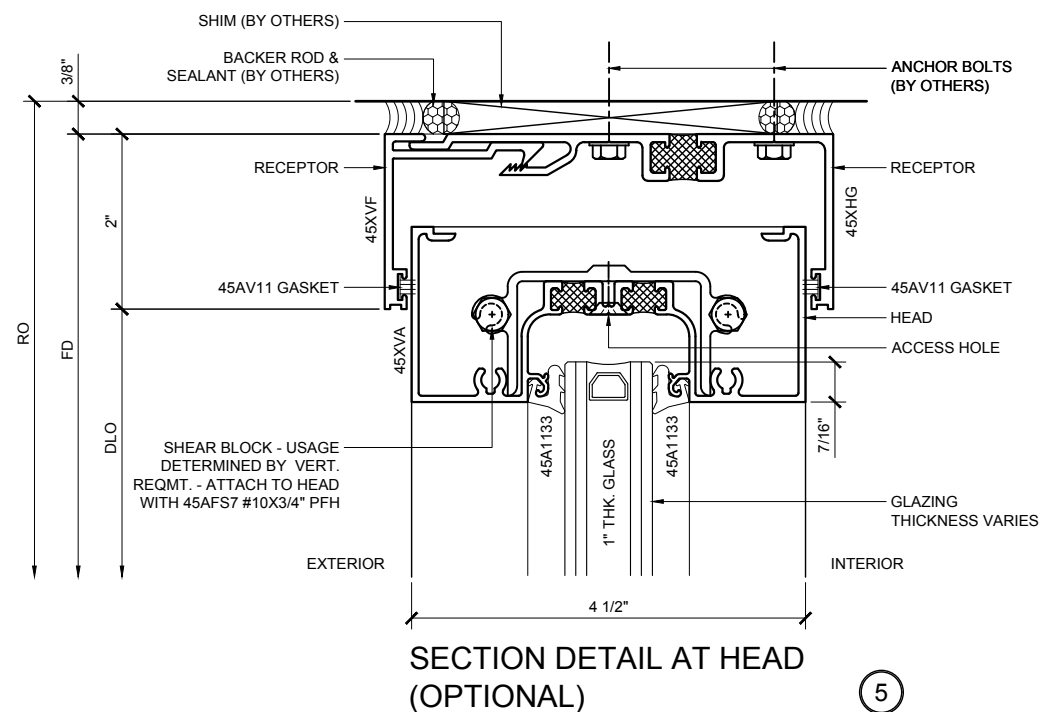
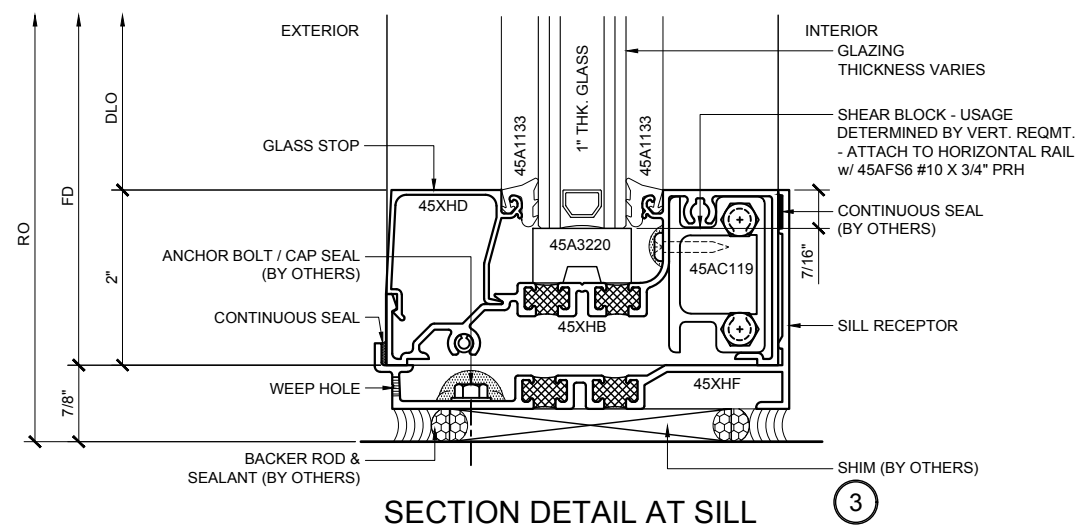
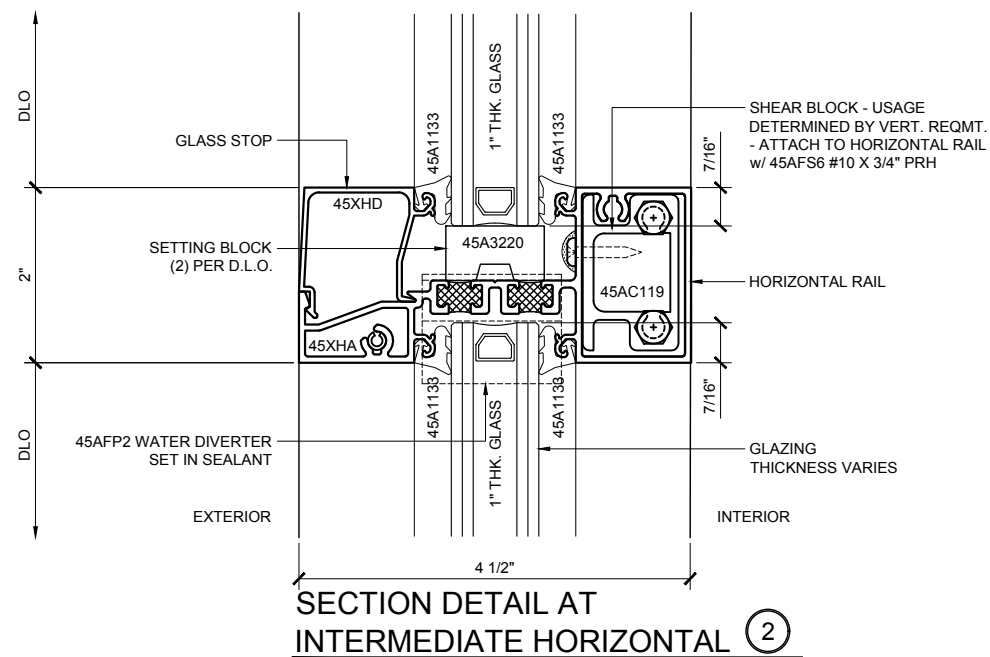
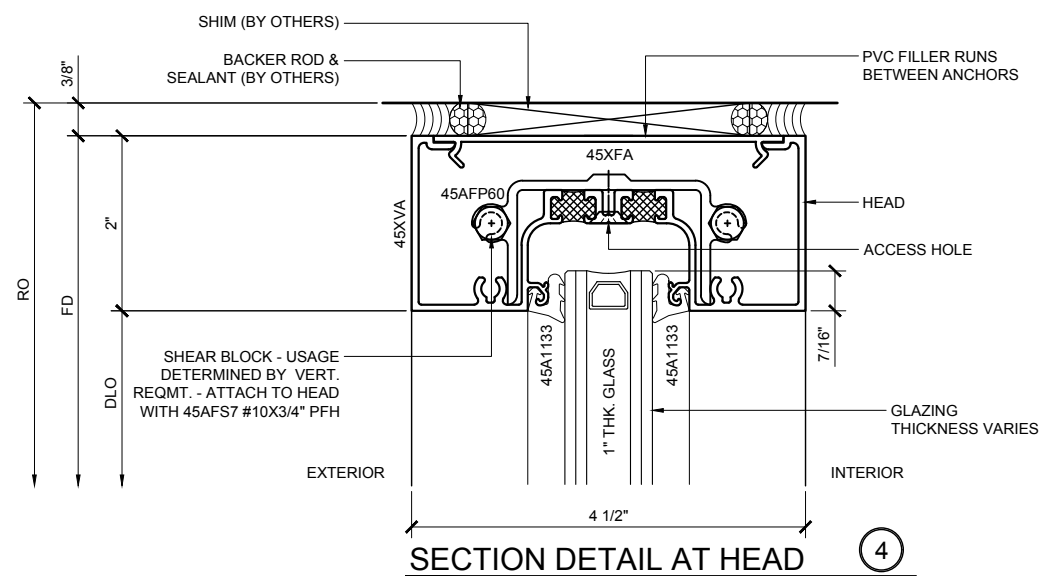
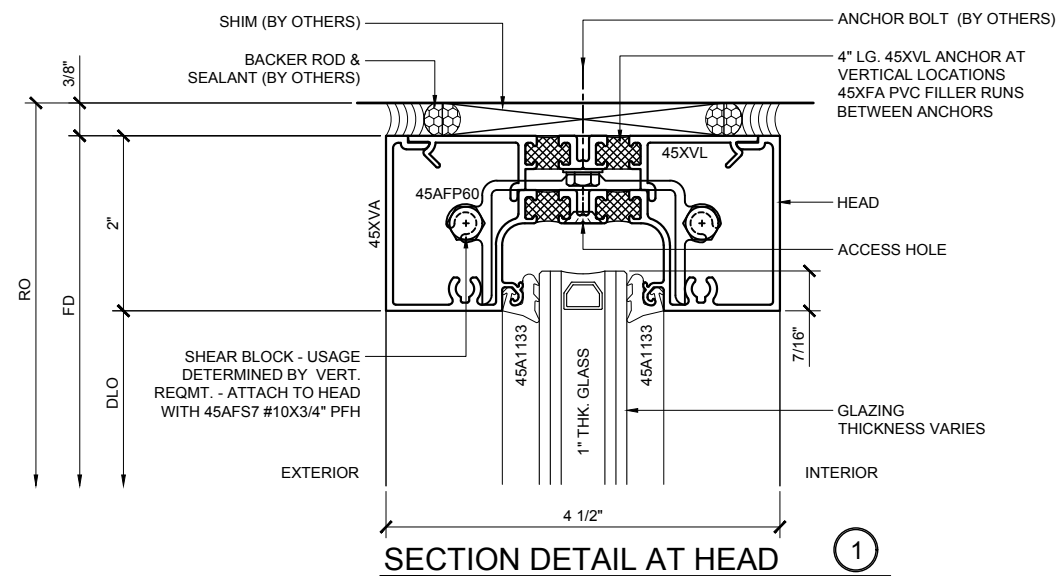
Drawn By: RPD

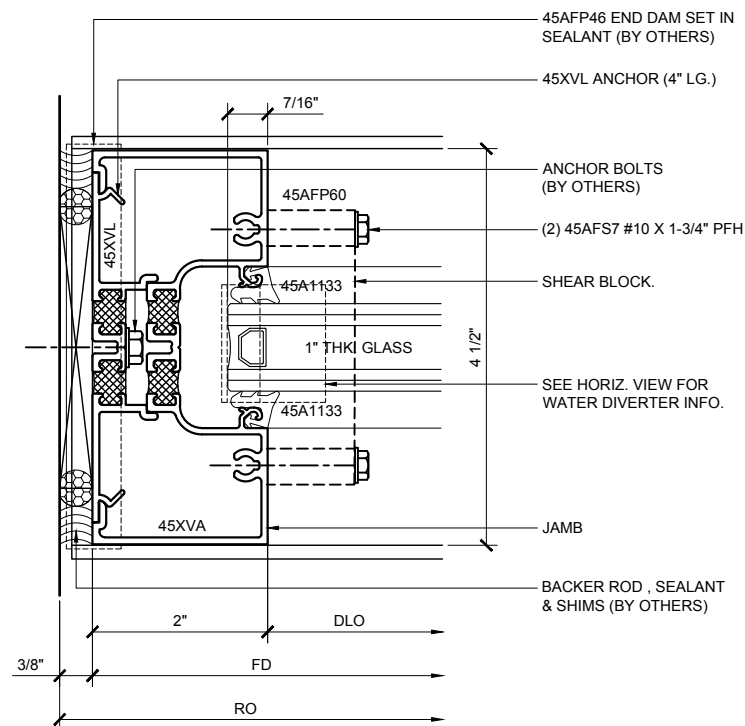
Date: 12/11/15

Scale: AS NOTED

File Name: 45X.dwg

Sheet

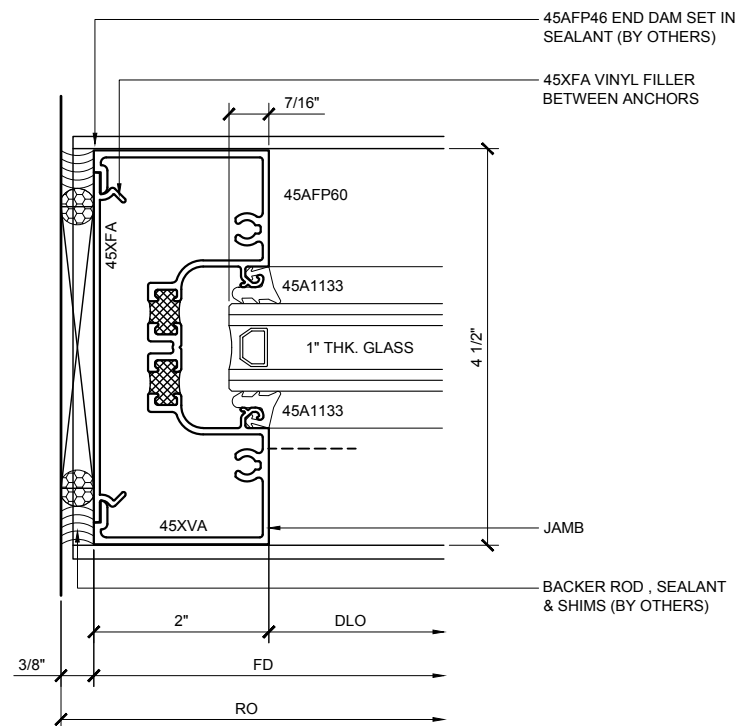




SECTION DETAIL AT JAMB
(@ HEAD)

⑥

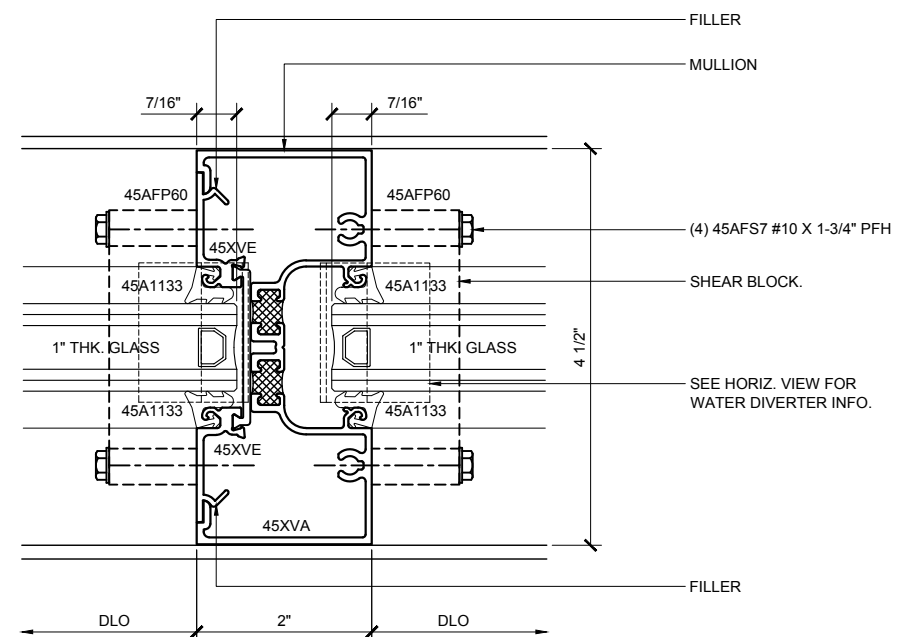
TYPICAL SHEAR BLOCK ASSEMBLY MULLION



SECTION DETAIL AT JAMB
(@ HEAD IN BETWEEN ANCHORS)

⑥A

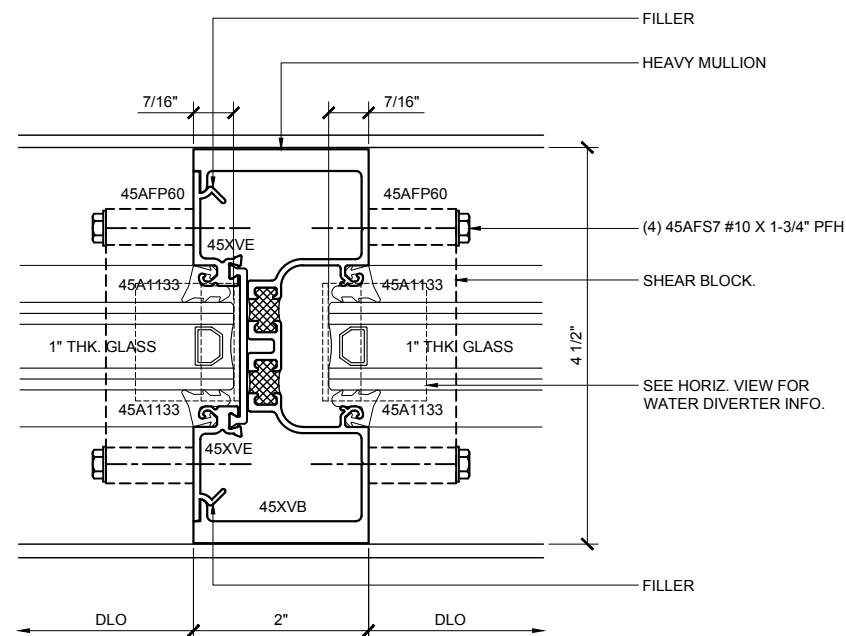
TYPICAL SHEAR BLOCK ASSEMBLY MULLION



SECTION DETAIL AT 2-PIECE
(@ HEAD)

⑦

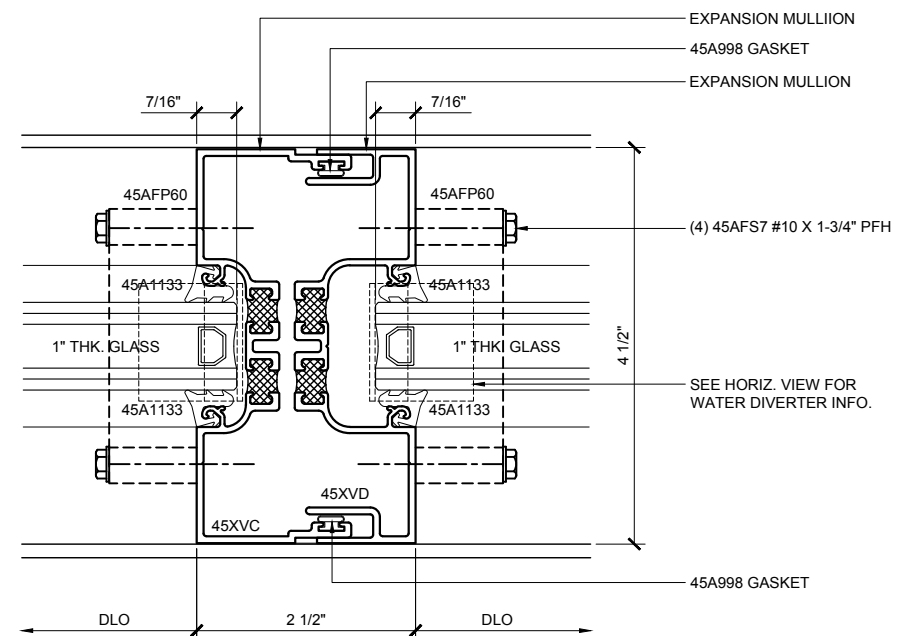
TYPICAL SHEAR BLOCK ASSEMBLY MULLION



SECTION DETAIL AT
HEAVY MULLION (@ HEAD)

⑧

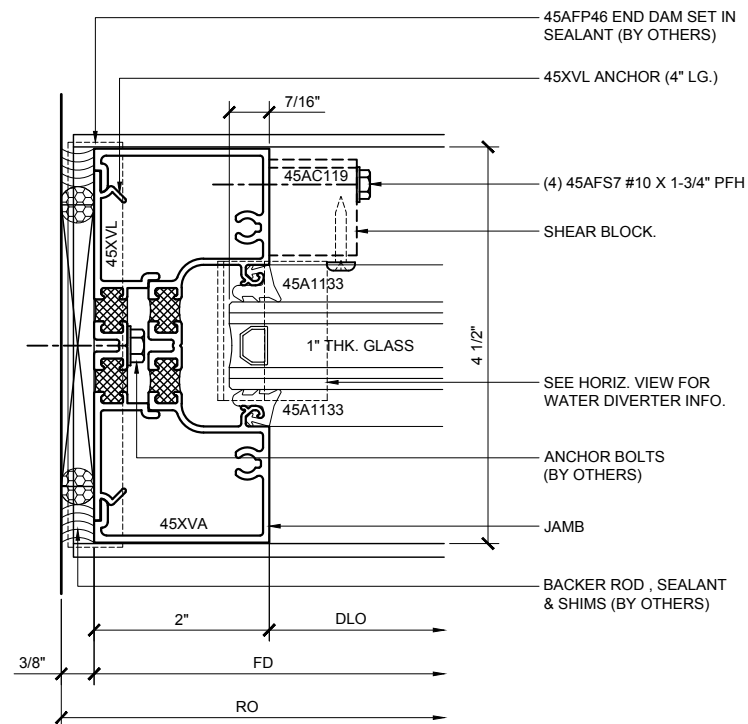
TYPICAL SHEAR BLOCK ASSEMBLY MULLION



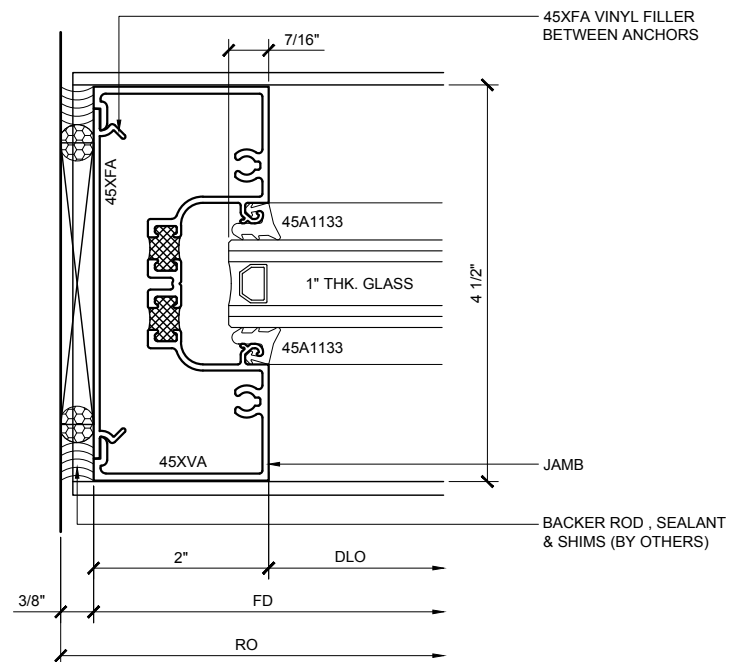
SECTION DETAIL AT
EXPANSION MULLION (@ HEAD)

⑨

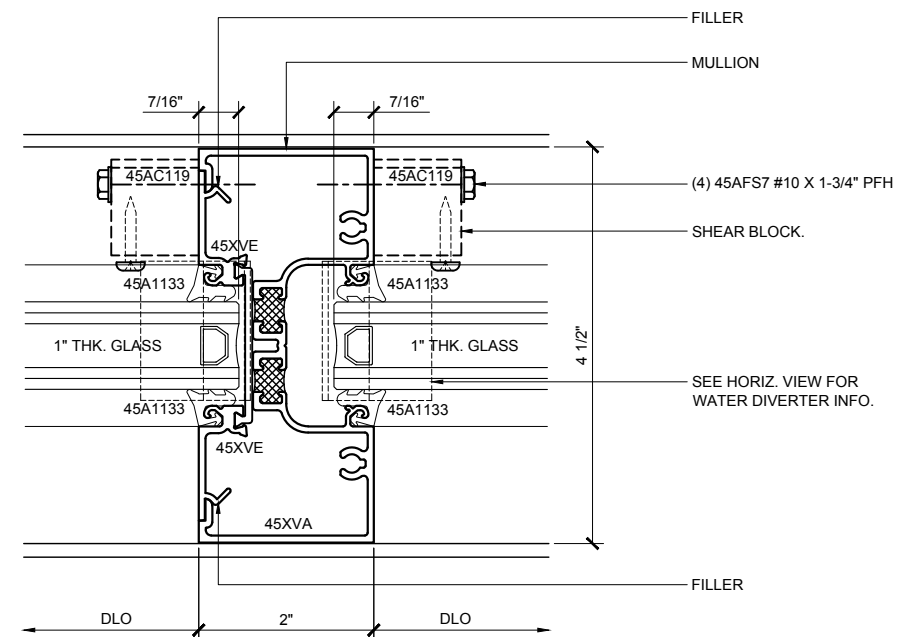
TYPICAL SHEAR BLOCK ASSEMBLY MULLION



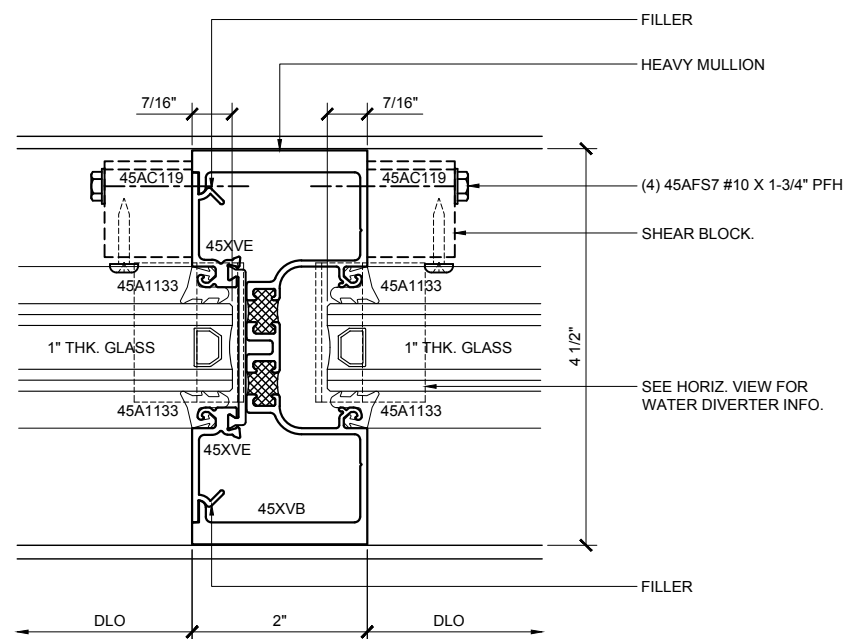
SECTION DETAIL AT JAMB
(@ INTERMEDIATE VERTICAL / SILL) ⑩
TYPICAL SHEAR BLOCK ASSEMBLY MULLION



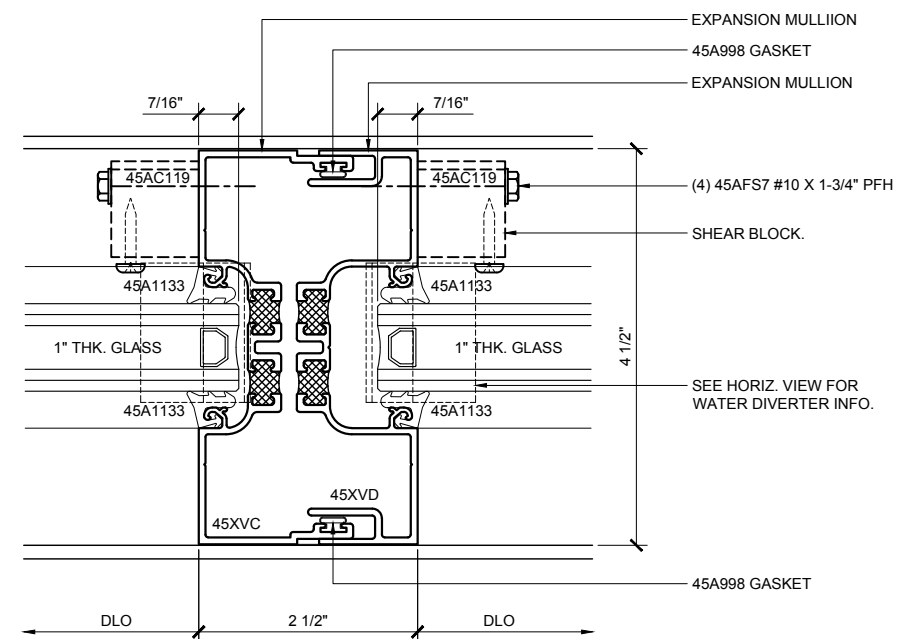
SECTION DETAIL AT JAMB
(@ SILL IN BETWEEN ANCHORS) ⑩A
TYPICAL SHEAR BLOCK ASSEMBLY MULLION



SECTION DETAIL AT 2-PIECE
(@ INTERMEDIATE VERTICAL / SILL) ⑪
TYPICAL SHEAR BLOCK ASSEMBLY MULLION



SECTION DETAIL AT HEAVY MULLION
(@ INTERMEDIATE VERTICAL / SILL) ⑫
TYPICAL SHEAR BLOCK ASSEMBLY MULLION



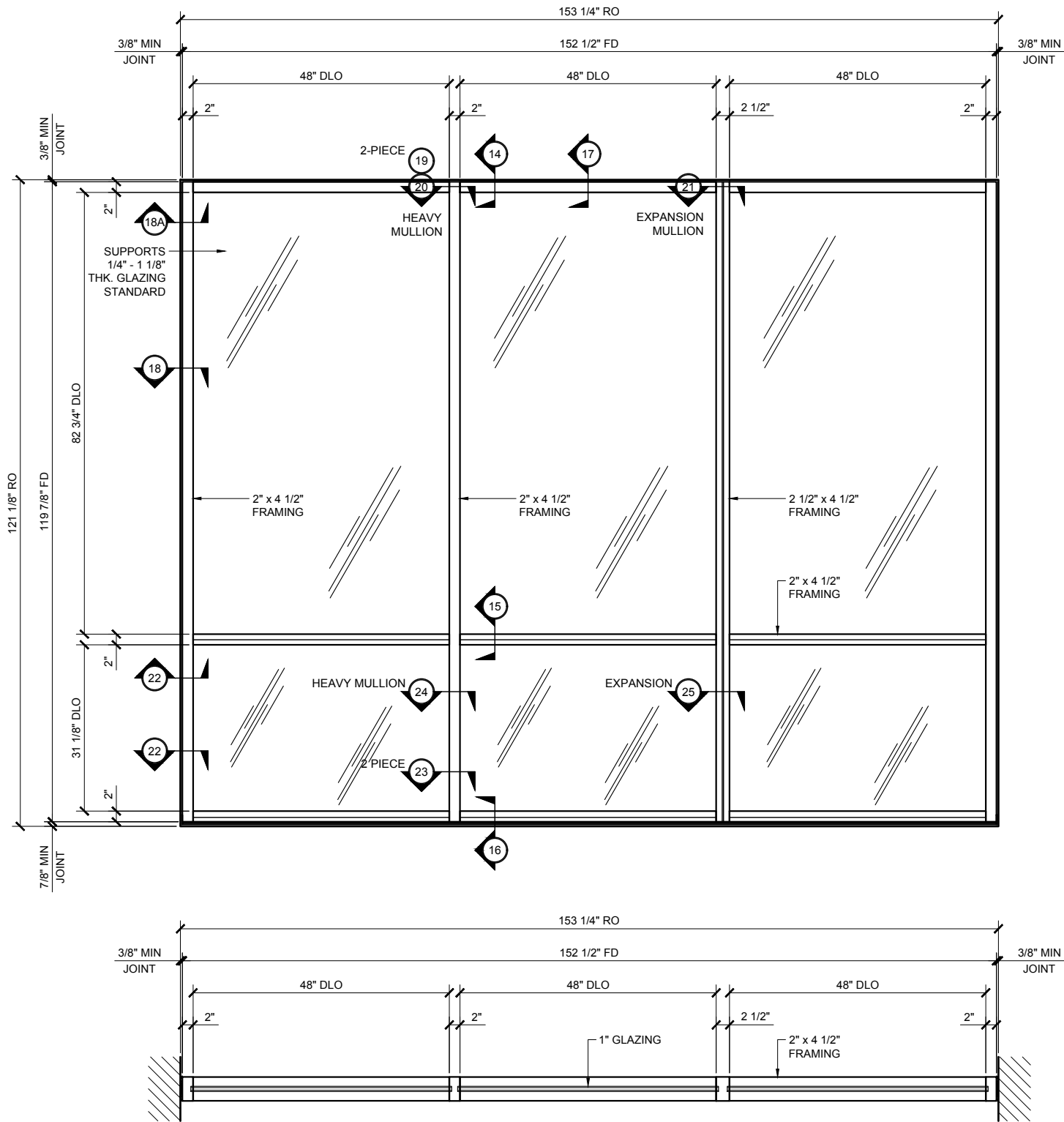
SECTION DETAIL AT EXPANSION MULLION
(@ INTERMEDIATE VERTICAL / SILL) ⑬
TYPICAL SHEAR BLOCK ASSEMBLY MULLION



STOREFRONTS

SERIES 45X CENTER / INTERIOR GLAZED SHEAR BLOCK STOREFRONT SYSTEM

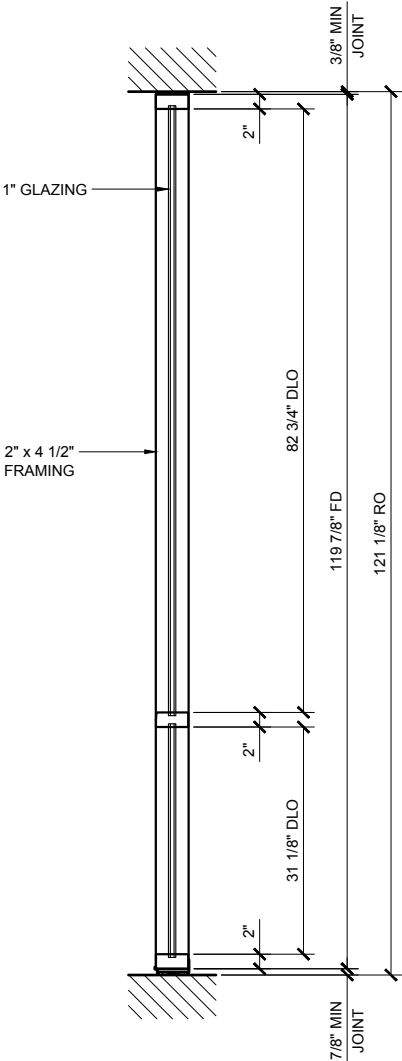
GLASS SIZING NOTE:
REFERENCE U.S. ALUMINUM
CATALOGS AND WEBSITE'S
LOAD CHARTS FOR SIZING
GUIDELINES.



45X SERIES SPECIFICATIONS

Series 45X offers improved thermal performance using the Poly-Aluminizer™. United States Aluminum offers cost efficient versatile Center Glazed Systems with clean lines and superb performance. Series 45X may be interior or exterior glazed. A top load EPDM gasket is used to position and weatherseal the glass in the aluminum pocket.

- 2" x 4 1/2" frame
- 1" Glazing infill (SHOWN) Optional snap-in reducers for 1/4" - 3/4" glass are available
- Struct-Link™ thermal break
- Full range of accessory components
- Available in an array of architectural coatings and anodized finishes
- Screw spline assembly
- Shear block assembly (SHOWN)
- Interior or Exterior Glazed (INTERIOR GLAZED OPTION SHOWN)



STANDARD ABBREVIATIONS

RO	ROUGH OPENING
FD	FRAME DIMENSION
DLO	DAYLITE OPENING
DO	DOOR OPENING
DD	DOOR DIMENSION
SMC	SURFACE MOUNTED CLOSER
OHCC	OVERHEAD CONCEALED CLOSER

Revisions By:

Description:

U.S. ALUMINUM
SERIES 45X - DUAL
HIGH PERFORMANCE
THERMALLY BROKEN
STOREFRONT SYSTEM

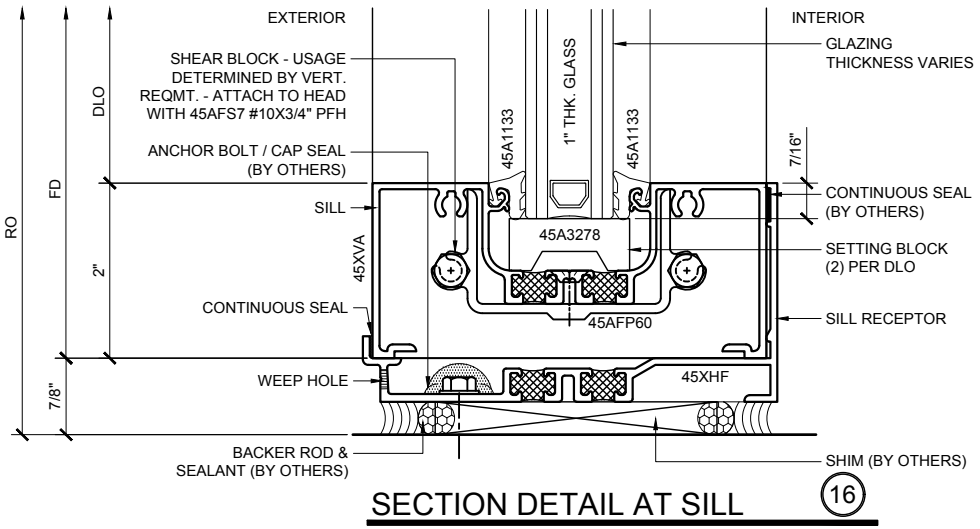
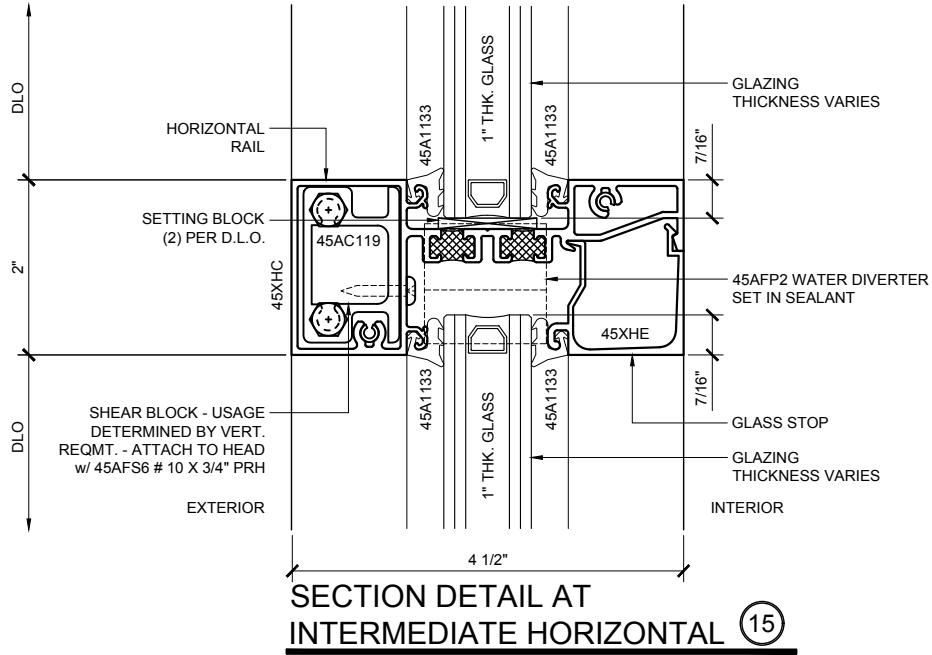
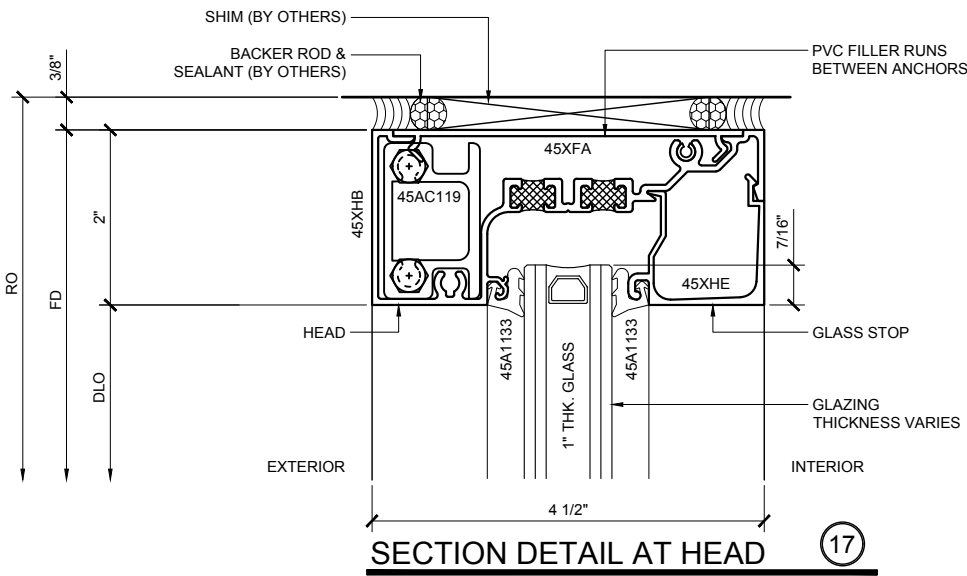
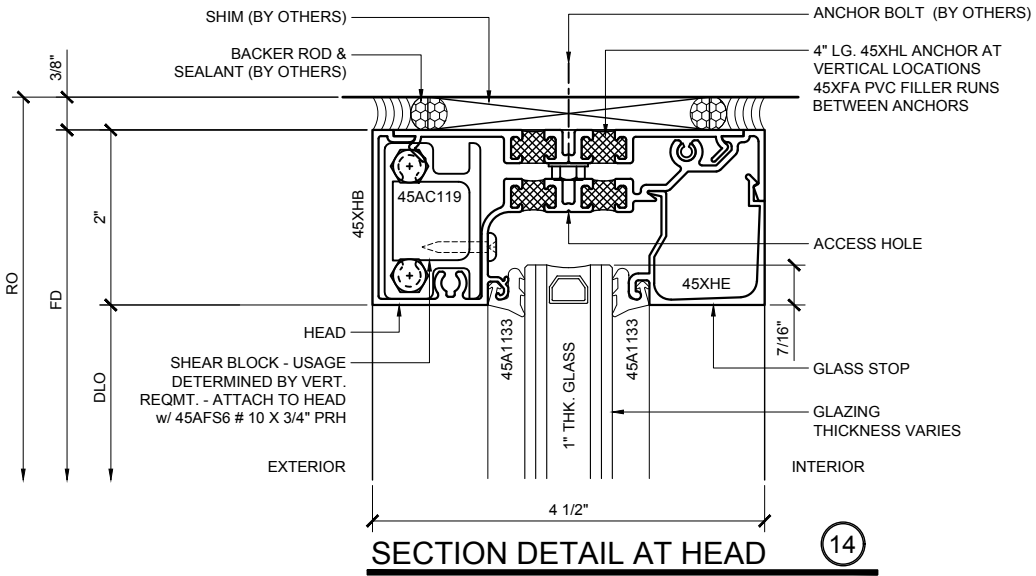
Drawn By: RPD

Date: 12/11/15

Scale: AS NOTED

File Name: 45X.dwg

Sheet



Revisions By:

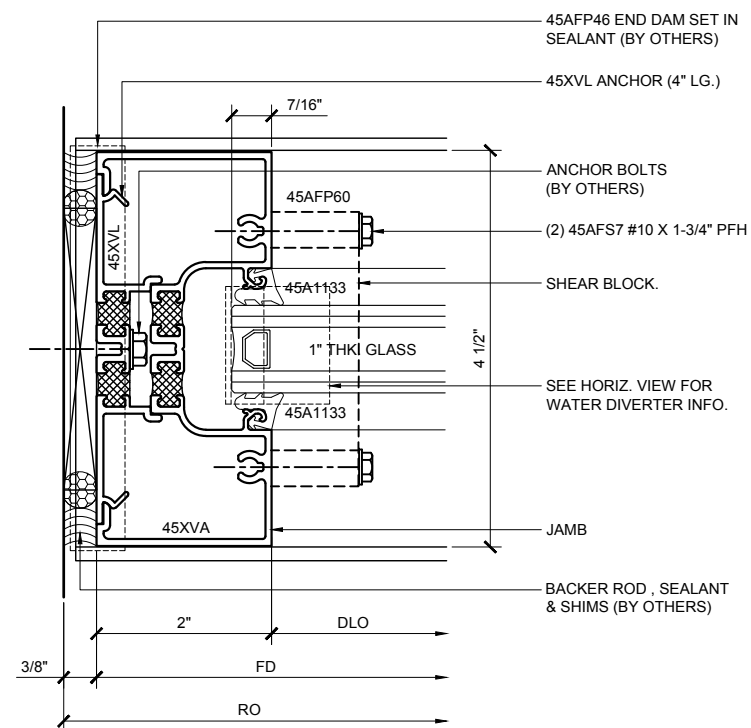
CAL ALUMINUM
C.R. LAURENCE CO. ARCHITECTURAL PRODUCTS
2533 E. Vinton Avenue, Los Angeles, CA 90058-1897
PH (800) 421-6144 FAX (800) 587-7201 www.claluminum.com

Description:

U.S. ALUMINUM
SERIES 45X - DUAL
HIGH PERFORMANCE
THERMALLY BROKEN
STOREFRONT SYSTEM

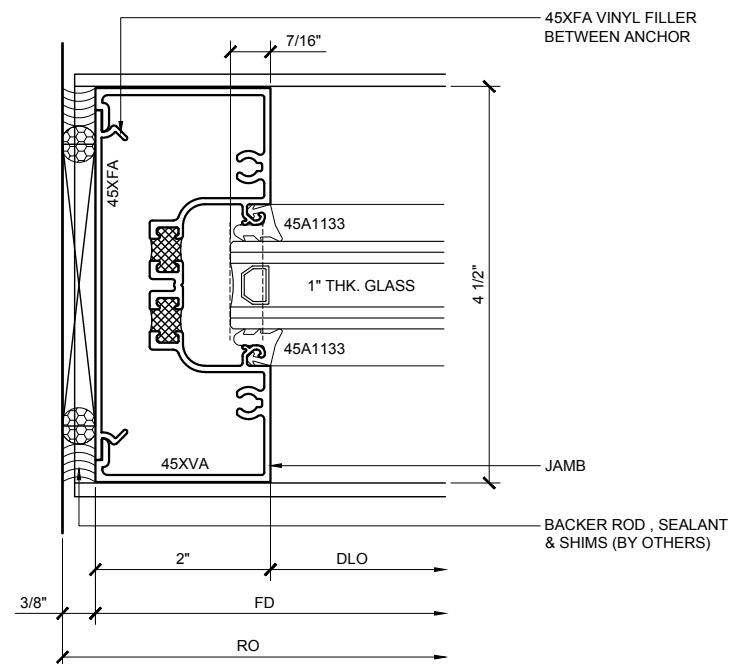
Drawn By: RPD
Date: 12/11/15
Scale: AS NOTED
File Name: 45X.dwg
Sheet

2.03



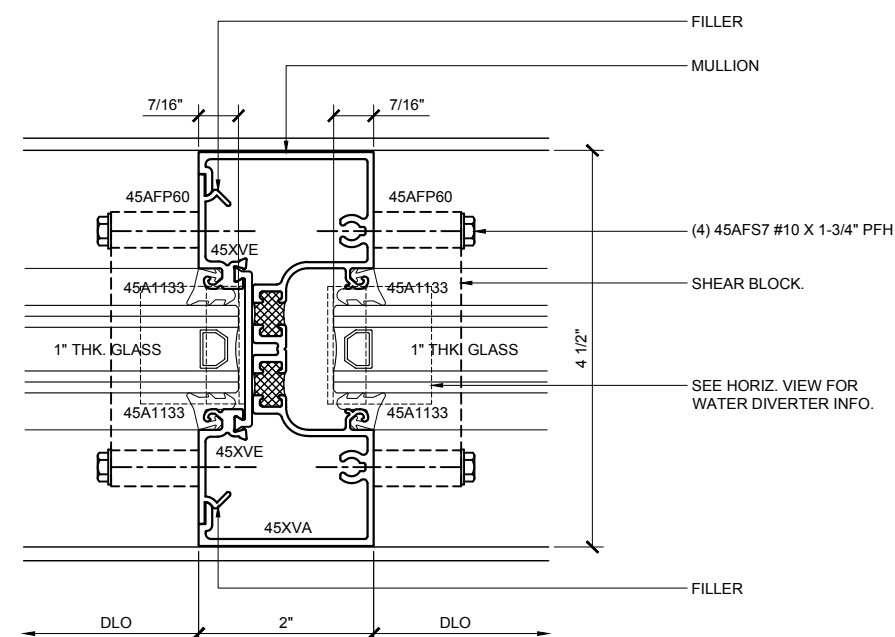
SECTION DETAIL AT JAMB
(@ HEAD)

18



SECTION DETAIL AT JAMB
(@ HEAD IN BETWEEN ANCHORS)

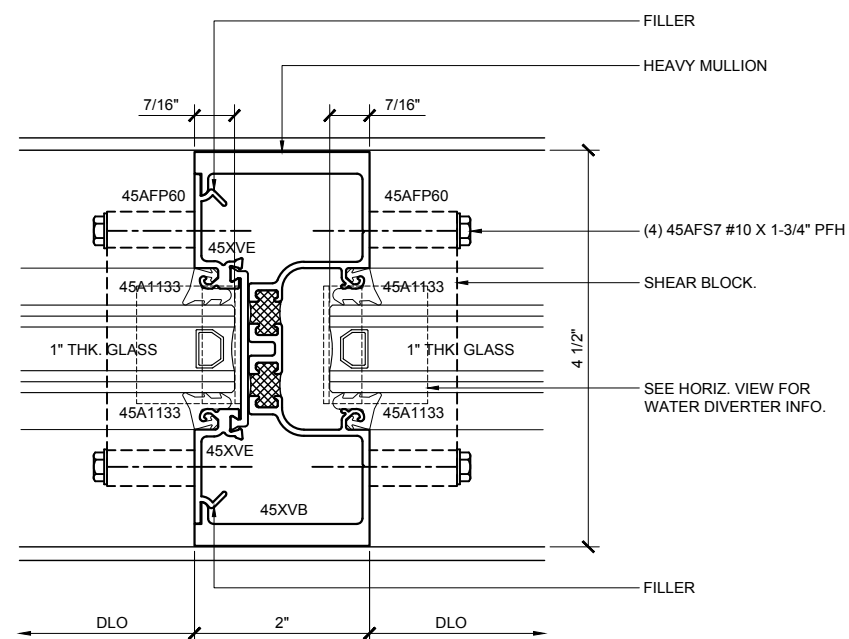
18A



SECTION DETAIL AT 2-PIECE
(@ HEAD)

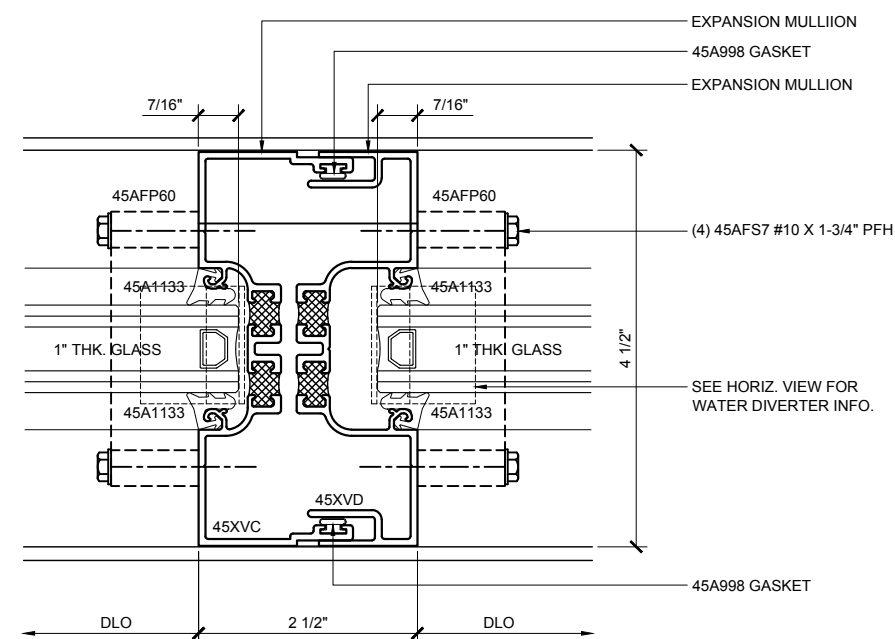
19

TYPICAL SHEAR BLOCK ASSEMBLY MULLION



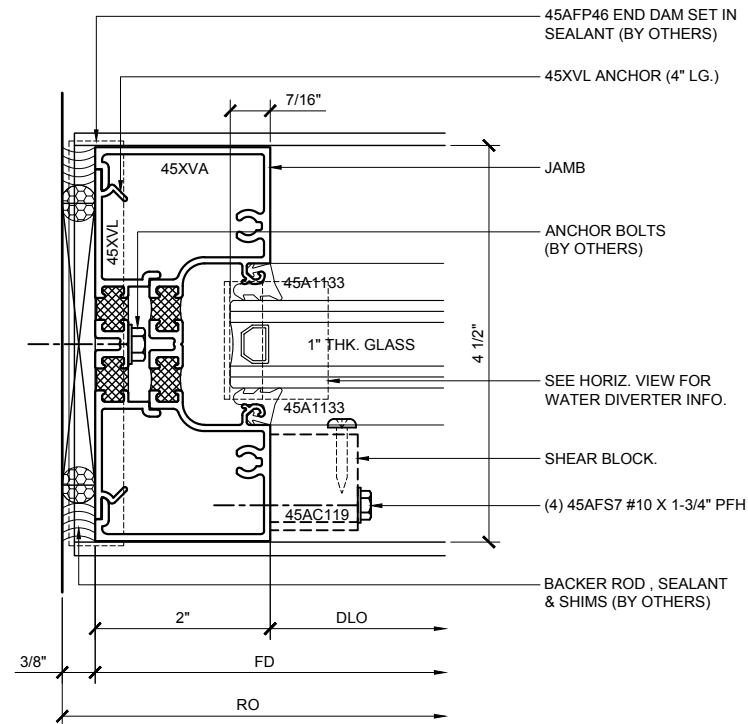
SECTION DETAIL AT
HEAVY MULLION (@ HEAD)

20



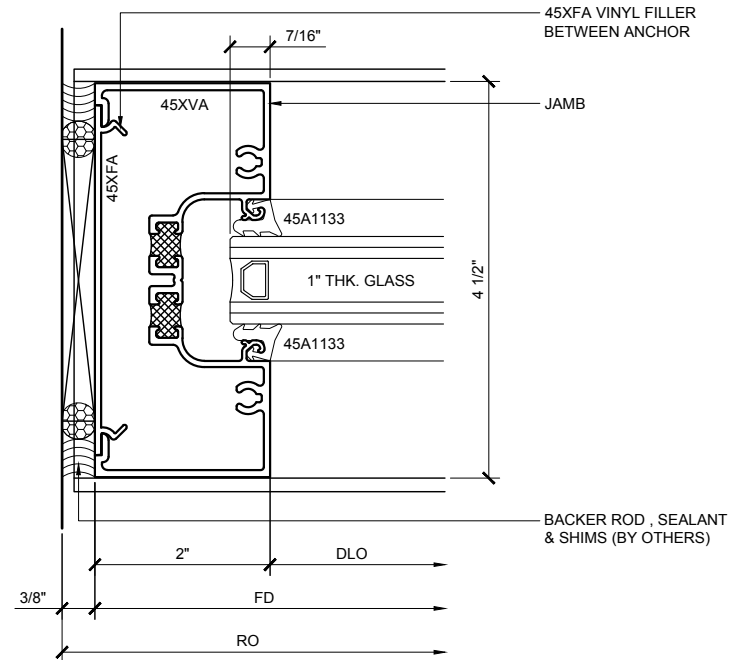
SECTION DETAIL AT
EXPANSION MULLION (@ HEAD)

21



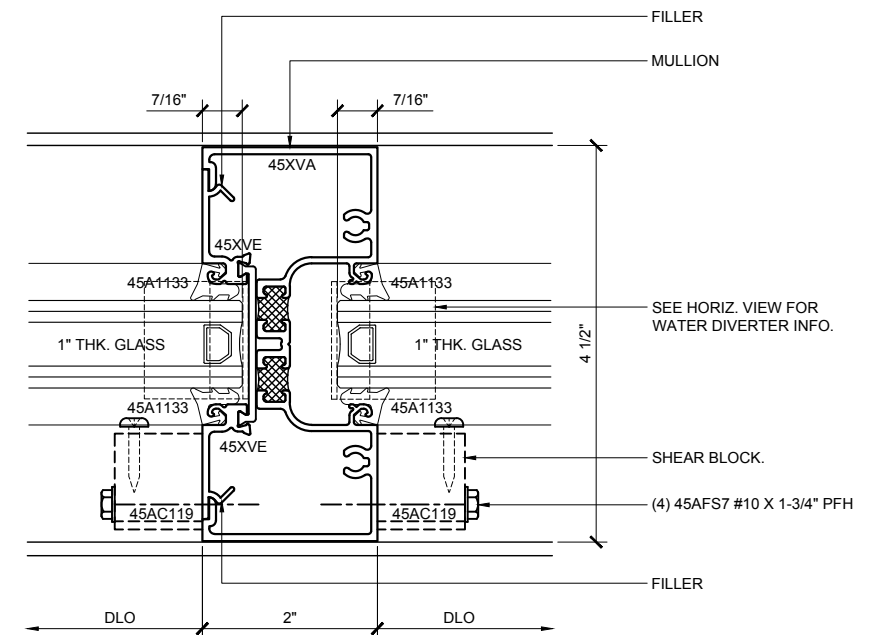
SECTION DETAIL AT JAMB
(@ INTERMEDIATE VERTICAL / SILL) 22

TYPICAL SHEAR BLOCK ASSEMBLY MULLION



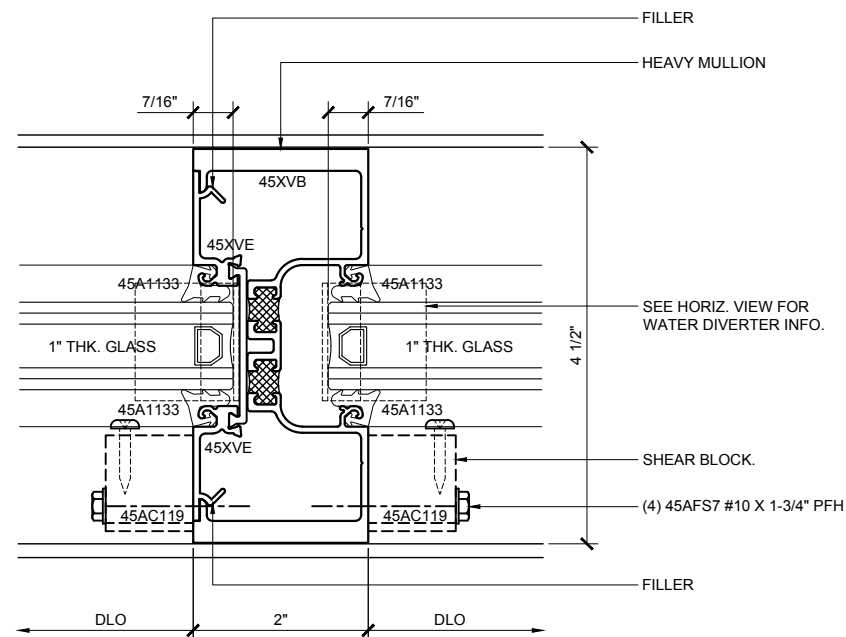
SECTION DETAIL AT JAMB
(@ SILL IN BETWEEN ANCHORS) 22A

TYPICAL SHEAR BLOCK ASSEMBLY MULLION



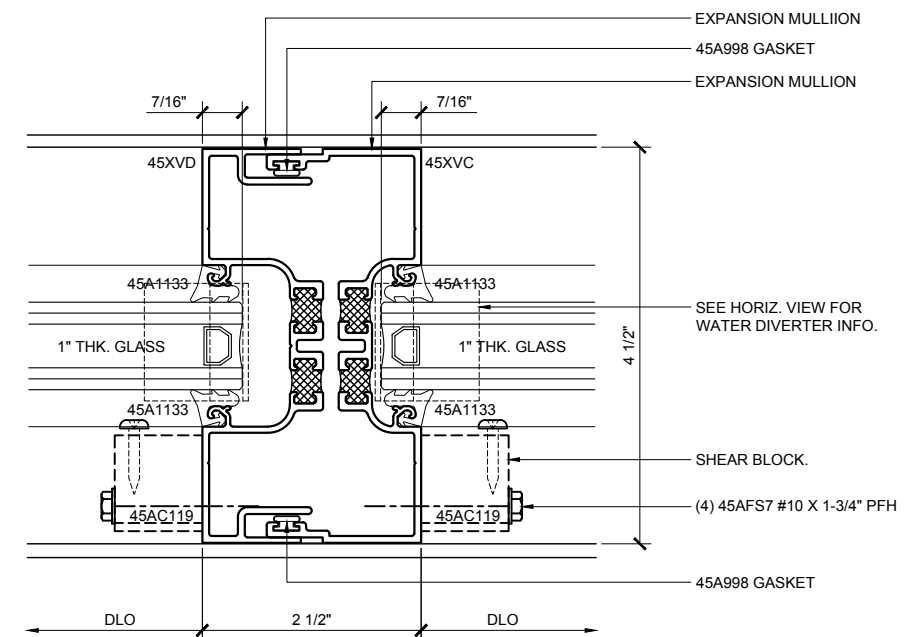
SECTION DETAIL AT 2-PIECE
(@ INTERMEDIATE VERTICAL / SILL) 23

TYPICAL SHEAR BLOCK ASSEMBLY MULLION



SECTION DETAIL AT HEAVY MULLION
(@ INTERMEDIATE VERTICAL / SILL) 24

TYPICAL SHEAR BLOCK ASSEMBLY MULLION



SECTION DETAIL AT EXPANSION MULLION
(@ INTERMEDIATE VERTICAL / SILL) 25

TYPICAL SHEAR BLOCK ASSEMBLY MULLION



STOREFRONTS

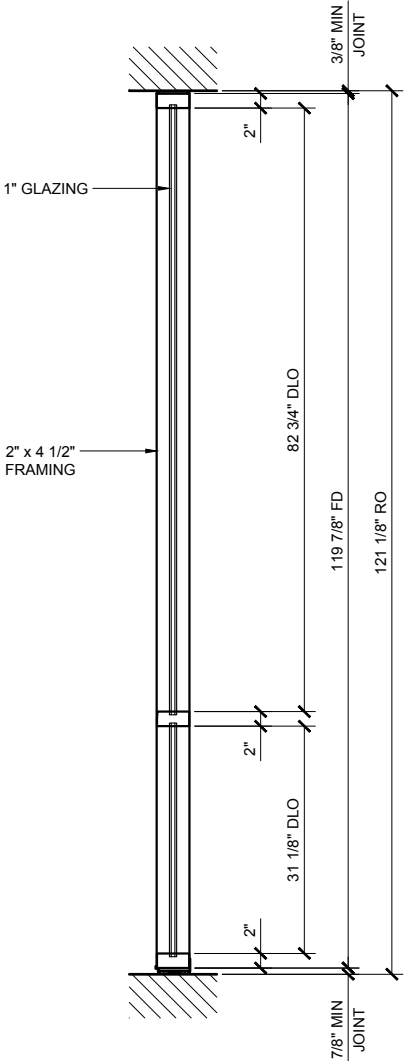
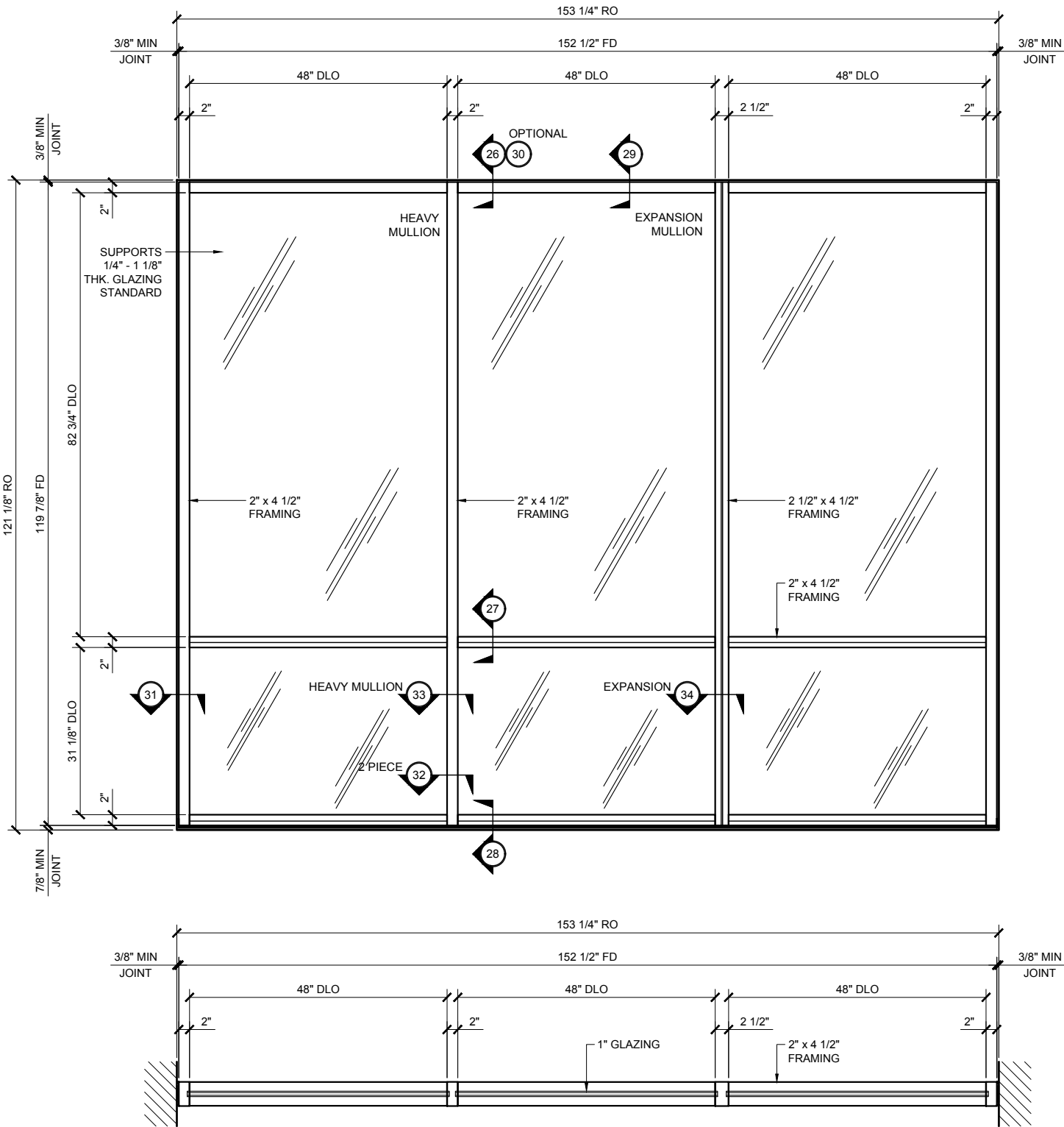
SERIES 45X CENTER / EXTERIOR GLAZED SCREW SPLINE STOREFRONT SYSTEM

45X SERIES SPECIFICATIONS

Series 45X offers improved thermal performance using the Poly-Aluminizer™. United States Aluminum offers cost efficient versatile Center Glazed Systems with clean lines and superb performance. Series 45X may be interior or exterior glazed. A top load EPDM gasket is used to position and weatherseal the glass in the aluminum pocket.

- 2" x 4 1/2" frame
- 1" Glazing infill (SHOWN) Optional snap-in reducers for 1/4" - 3/4" glass are available
- Struct-Link™ thermal break
- Full range of accessory components
- Available in an array of architectural coatings and anodized finishes
- Screw spline assembly (SHOWN)
- Shear block assembly
- Interior or Exterior Glazed (EXTERIOR GLAZED OPTION SHOWN)

GLASS SIZING NOTE:
REFERENCE U.S. ALUMINUM
CATALOGS AND WEBSITE'S
LOAD CHARTS FOR SIZING
GUIDELINES.



STANDARD ABBREVIATIONS

- | | |
|------|---------------------------|
| RO | ROUGH OPENING |
| FD | FRAME DIMENSION |
| DLO | DAYLITE OPENING |
| DO | DOOR OPENING |
| DD | DOOR DIMENSION |
| SMC | SURFACE MOUNTED CLOSER |
| OHCC | OVERHEAD CONCEALED CLOSER |

Revisions By:

Description:

U.S. ALUMINUM
SERIES 45X - DUAL
HIGH PERFORMANCE
THERMALLY BROKEN
STOREFRONT SYSTEM

Drawn By:

RPD

Date:

12/11/15

Scale:

AS NOTED

File Name: 45X.dwg

Sheet

3.01

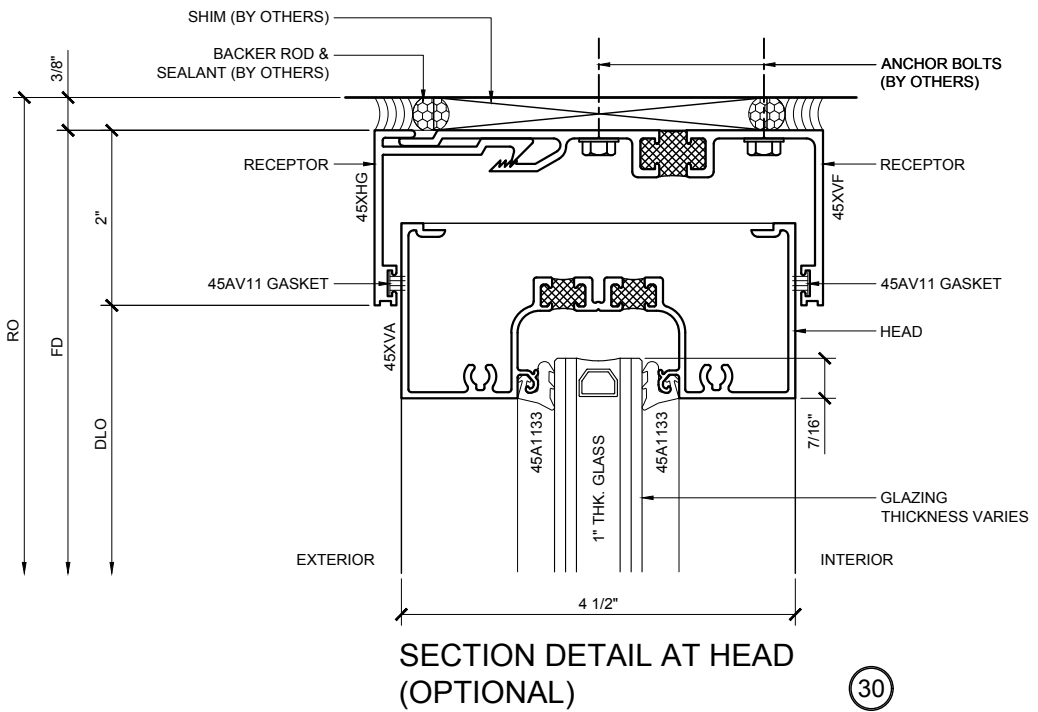
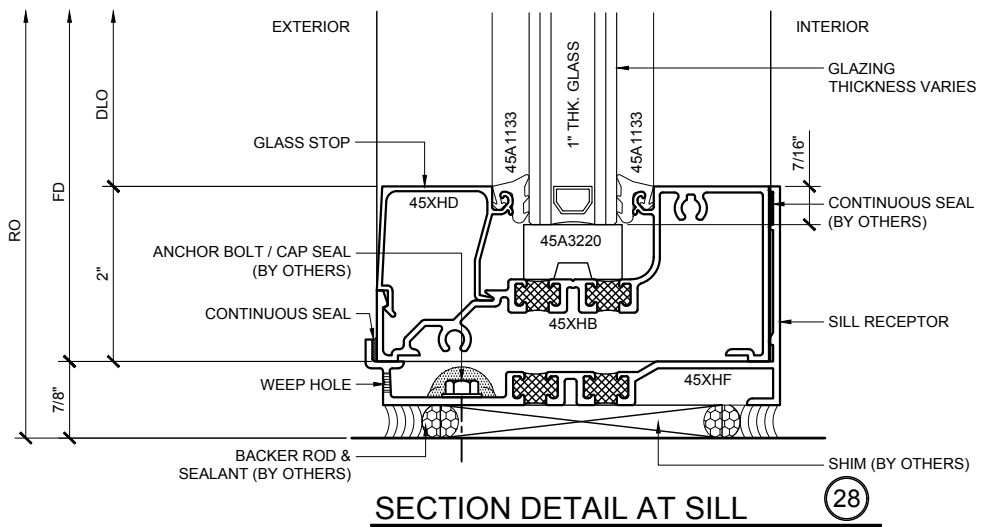
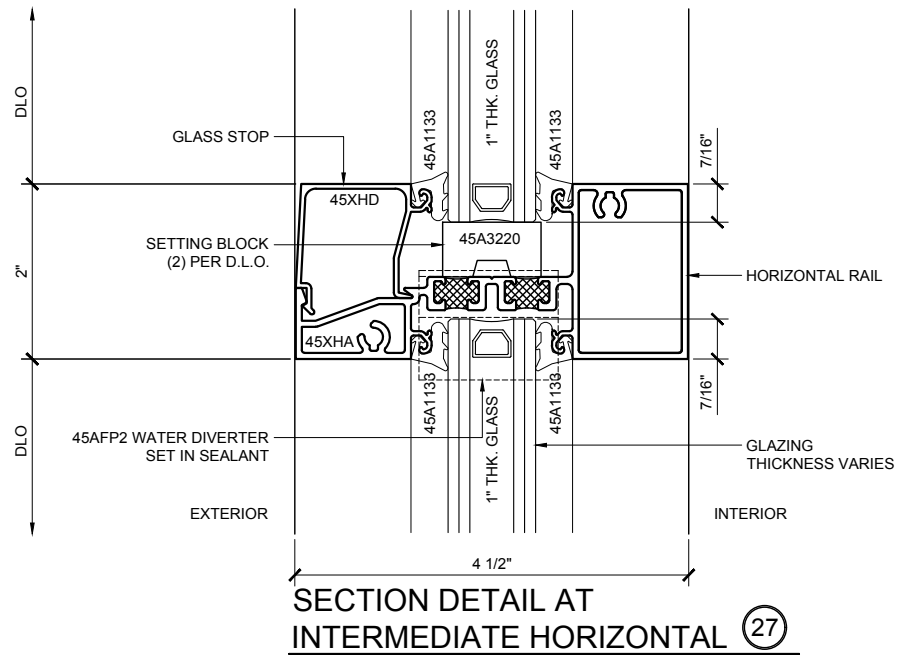
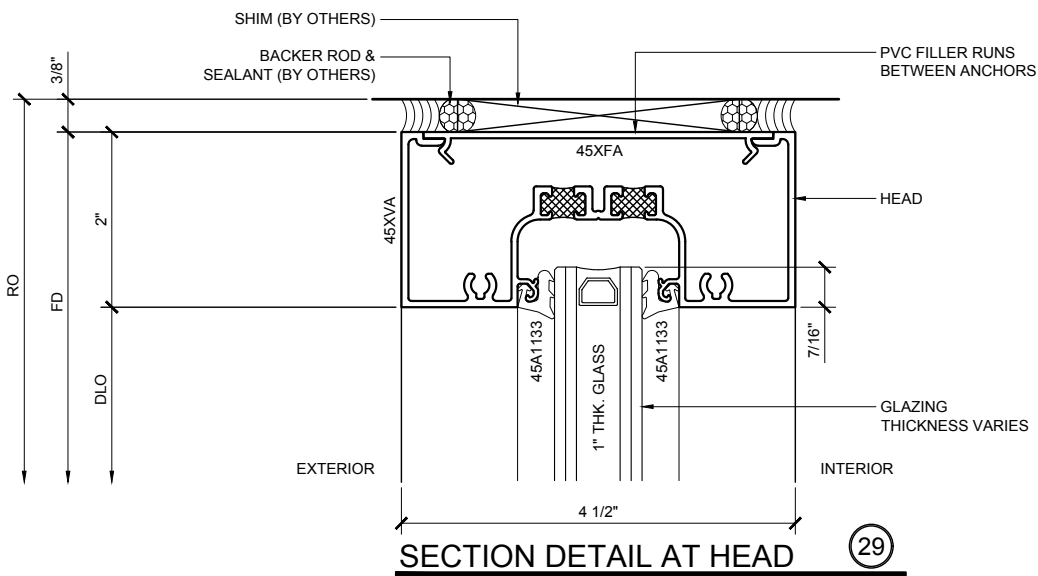
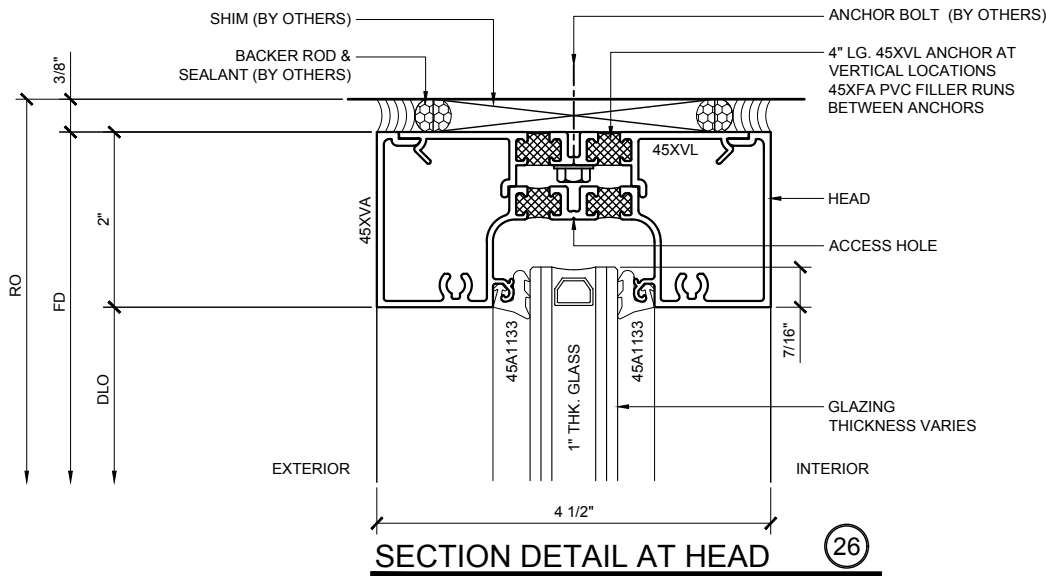
Revisions By:

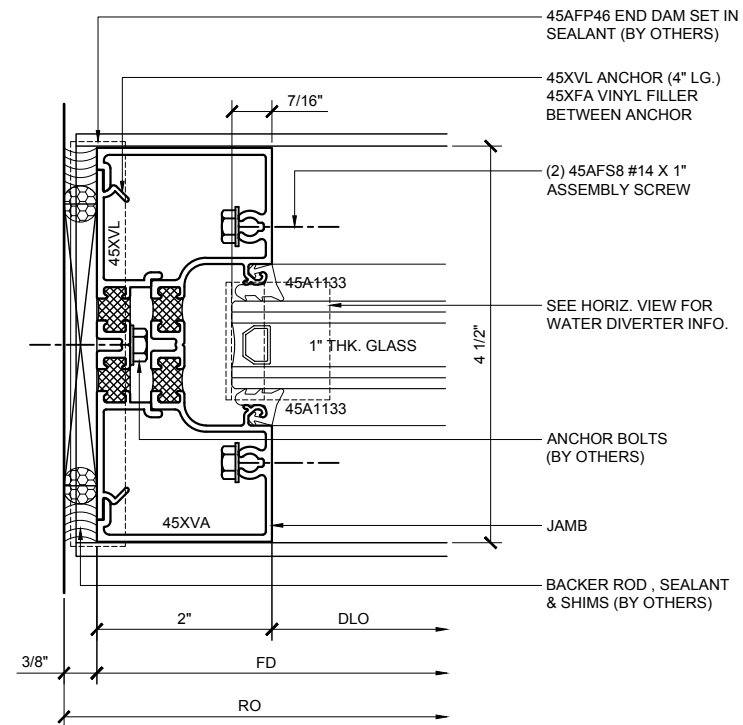


C.R. LAURENCE CO. ARCHITECTURAL PRODUCTS
2503 E. Vernon Avenue, Los Angeles, CA 90058-1897
PH (800) 421-6144 FX (800) 587-7501 www.crlaurence.com

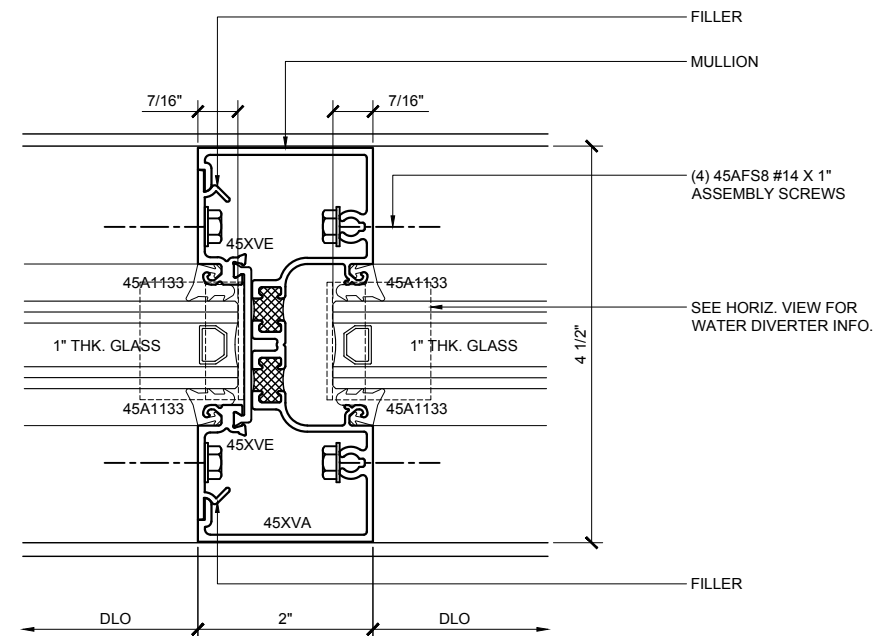
U.S. ALUMINUM
SERIES 45X - DUAL
HIGH PERFORMANCE
THERMALLY BROKEN
STOREFRONT SYSTEM

Drawn By: RPD
Date: 12/11/15
Scale: AS NOTED
File Name: 45X.dwg
Sheet

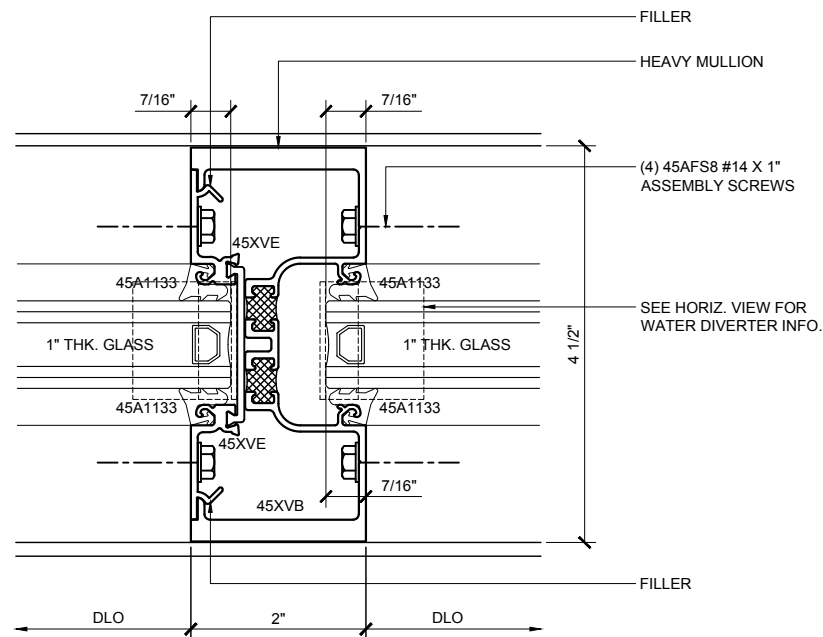




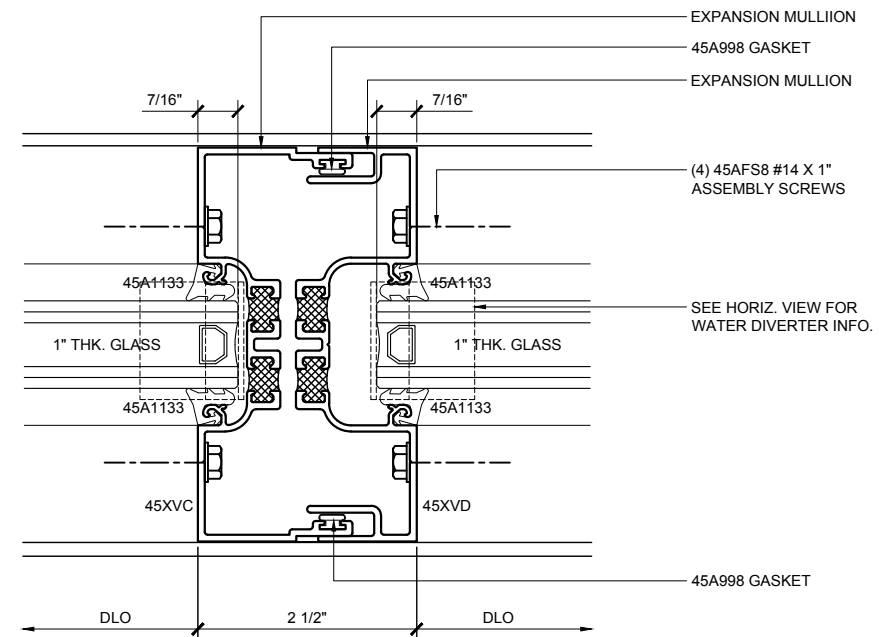
SECTION DETAIL AT JAMB (31)
TYPICAL SCREW SPLINE ASSEMBLY MULLION



SECTION DETAIL AT 2-PIECE (32)
TYPICAL SCREW SPLINE ASSEMBLY MULLION



SECTION DETAIL AT HEAVY MULLION (33)
TYPICAL SCREW SPLINE ASSEMBLY MULLION



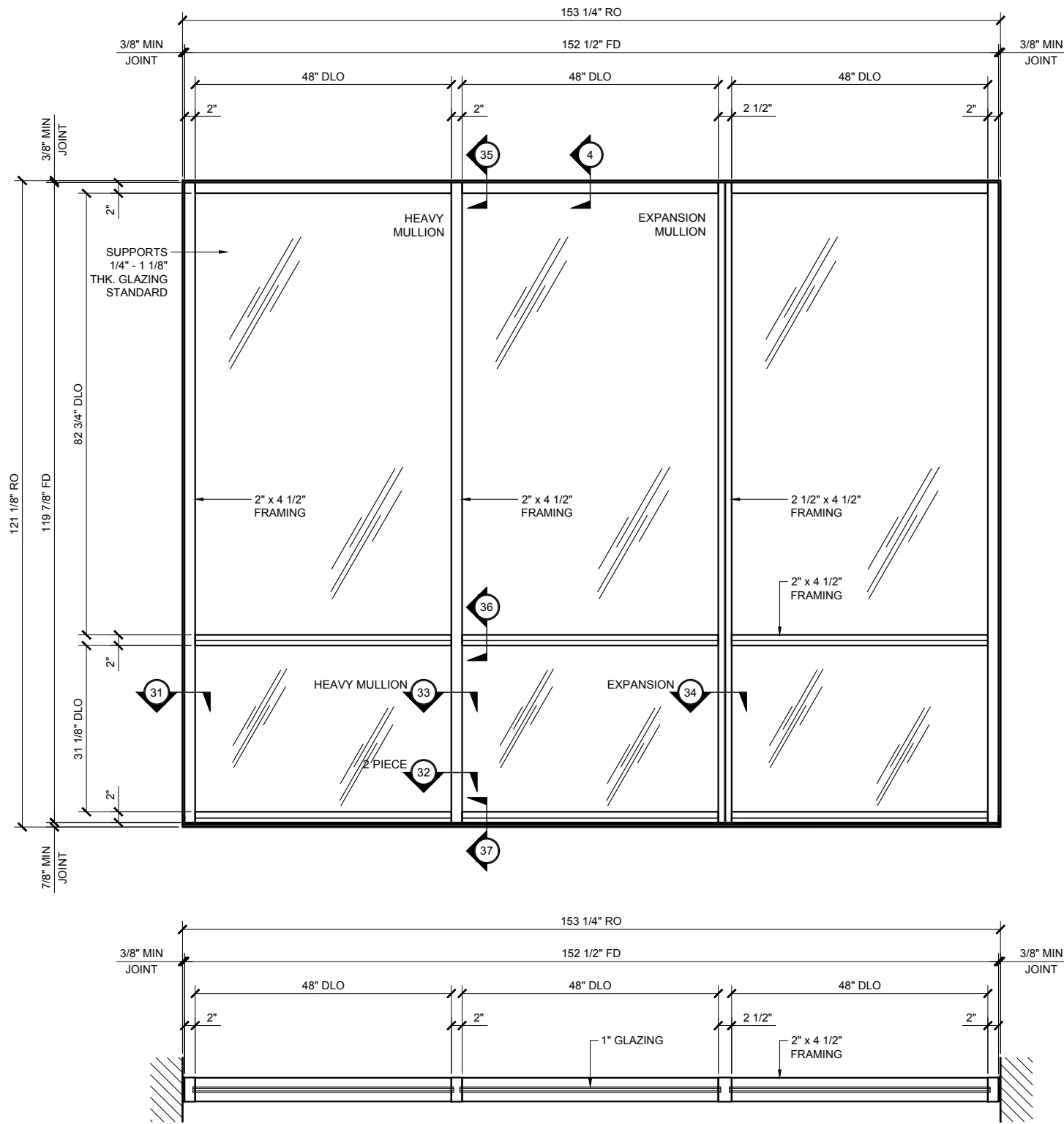
SECTION DETAIL AT EXPANSION MULLION (34)
TYPICAL SCREW SPLINE ASSEMBLY MULLION



STOREFRONTS

SERIES 45X CENTER / INTERIOR GLAZED SCREW SPLINE STOREFRONT SYSTEM

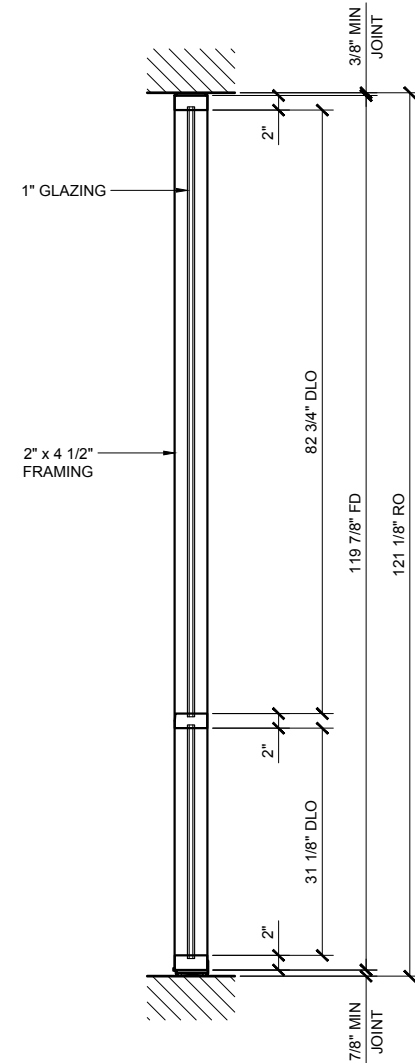
GLASS SIZING NOTE:
REFERENCE U.S. ALUMINUM
CATALOGS AND WEBSITE'S
LOAD CHARTS FOR SIZING
GUIDELINES.



45X SERIES SPECIFICATIONS

Series 45X offers improved thermal performance using the Poly-Aluminizer™. United States Aluminum offers cost efficient versatile Center Glazed Systems with clean lines and superb performance. Series 45X may be interior or exterior glazed. A top load EPDM gasket is used to position and weatherseal the glass in the aluminum pocket.

- 2" x 4 1/2" frame
- 1" Glazing infill (SHOWN) Optional snap-in reducers for 1/4" - 3/4" glass are available
- Struct-Link™ thermal break
- Full range of accessory components
- Available in an array of architectural coatings and anodized finishes
- Screw spline assembly (SHOWN)
- Shear block assembly
- Interior or Exterior Glazed (INTERIOR GLAZED OPTION SHOWN)



STANDARD ABBREVIATIONS

RO	ROUGH OPENING
FD	FRAME DIMENSION
DLO	DAYLITE OPENING
DO	DOOR OPENING
DD	DOOR DIMENSION
SMC	SURFACE MOUNTED CLOSER
OHCC	OVERHEAD CONCEALED CLOSER

Revisions By:

Description:

U.S. ALUMINUM
SERIES 45X - DUAL
HIGH PERFORMANCE
THERMALLY BROKEN
STOREFRONT SYSTEM

Drawn By: RPD

Date: 12/11/15

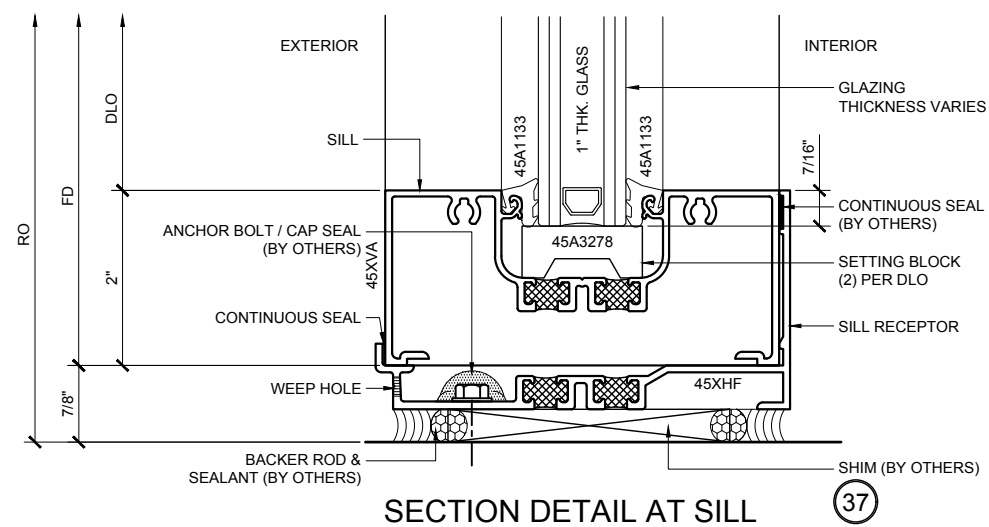
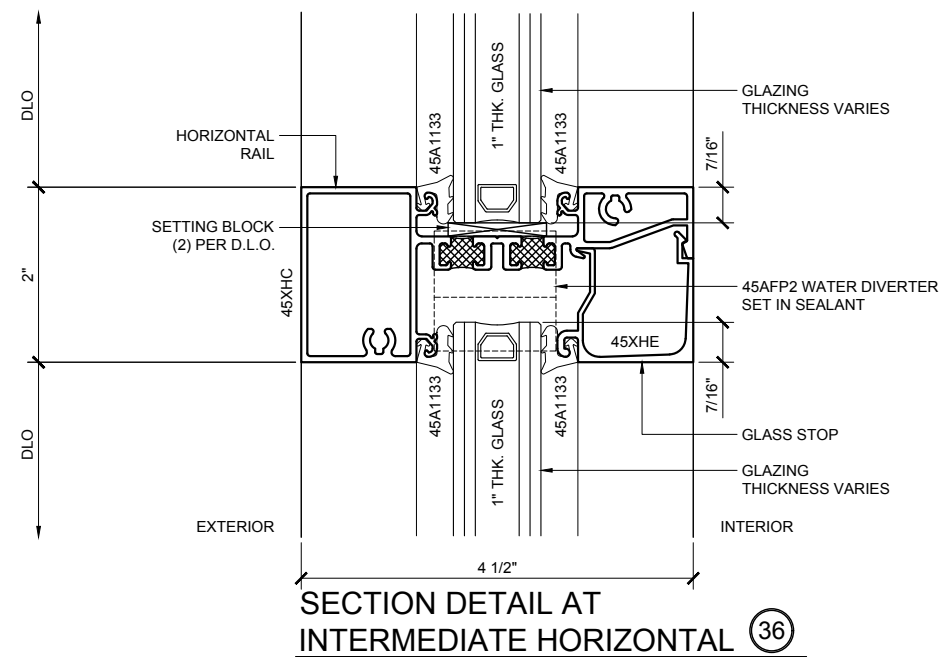
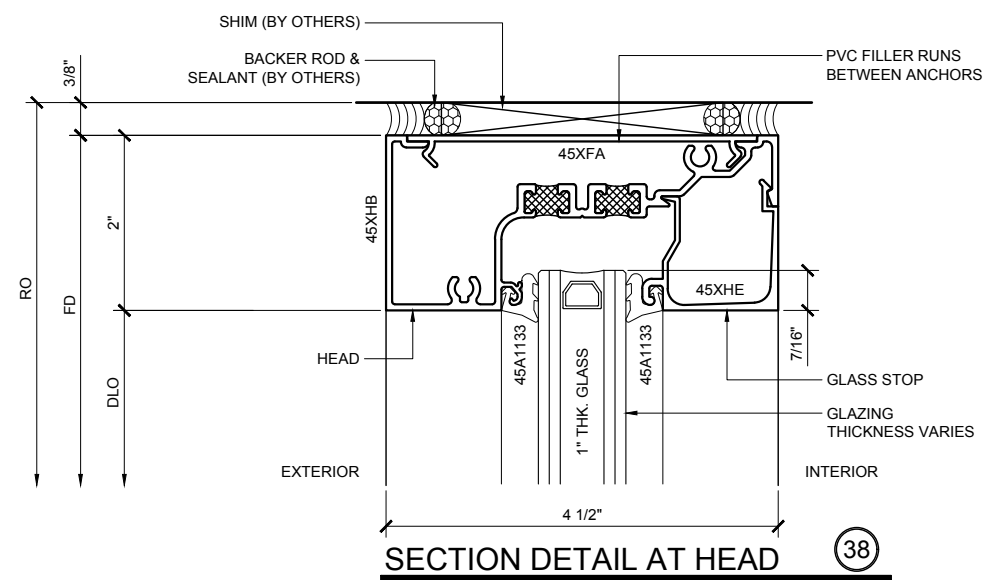
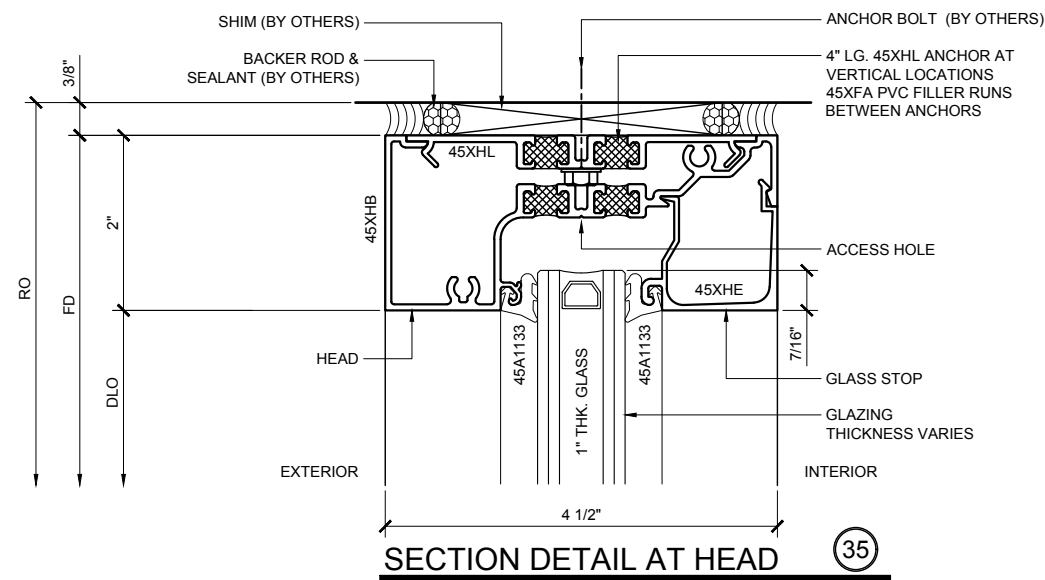
Scale: AS NOTED

File Name: 45X.dwg

Sheet

4.01

U.S. ALUMINUM
C.R. LAURENCE CO. ARCHITECTURAL PRODUCTS
2503 E. Vernon Avenue, Los Angeles, CA 90058-1897
PH (800) 421-6144 FX 800-587-7501 www.crlaurence.com

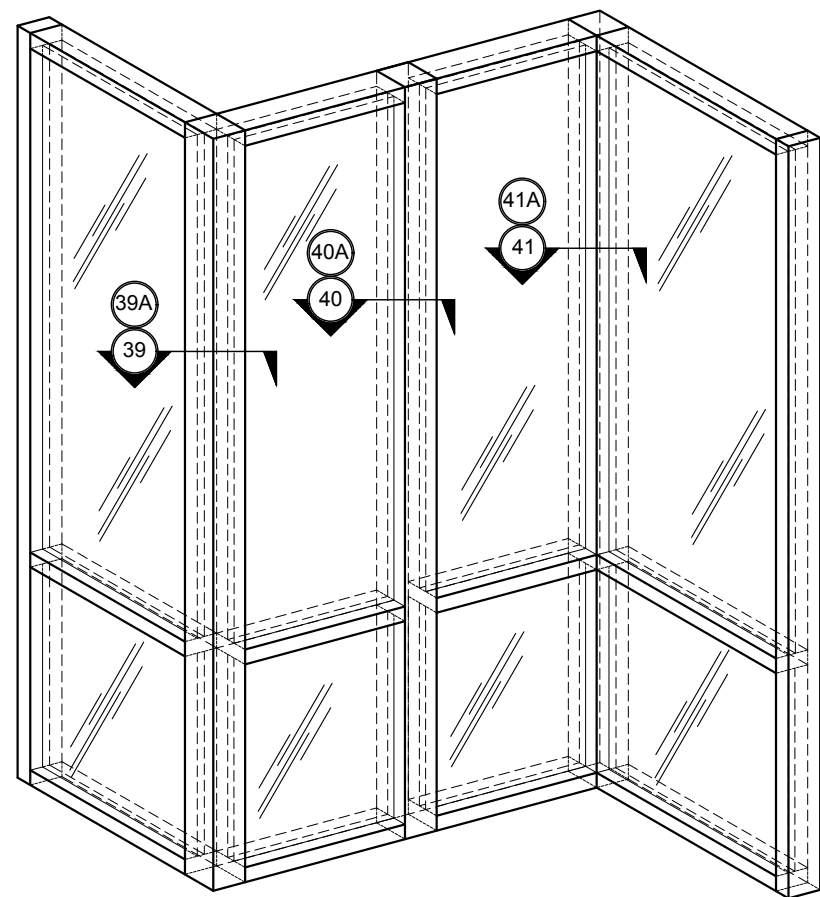




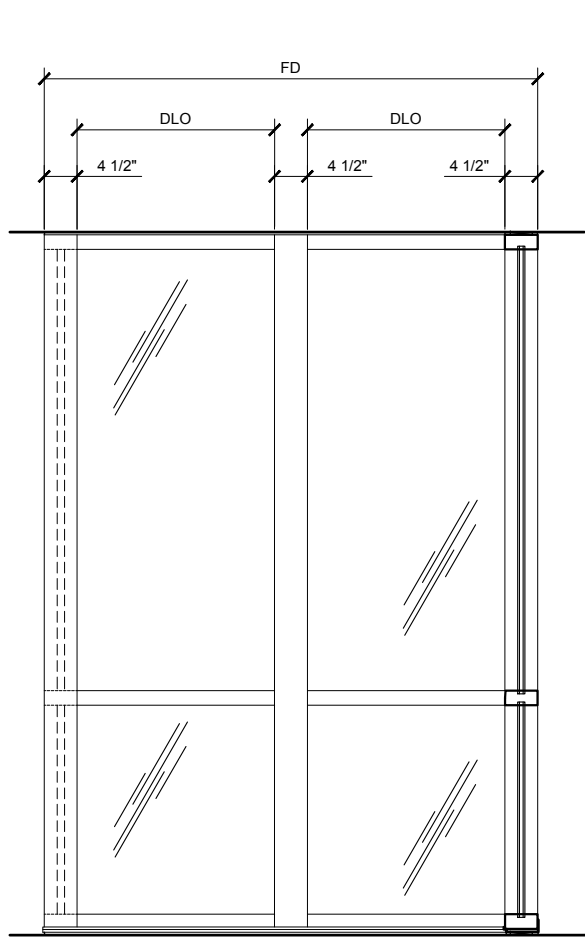
STOREFRONTS

SERIES 45X THERMAL FLUSH
CENTER-GLAZED STOREFRONT SYSTEM

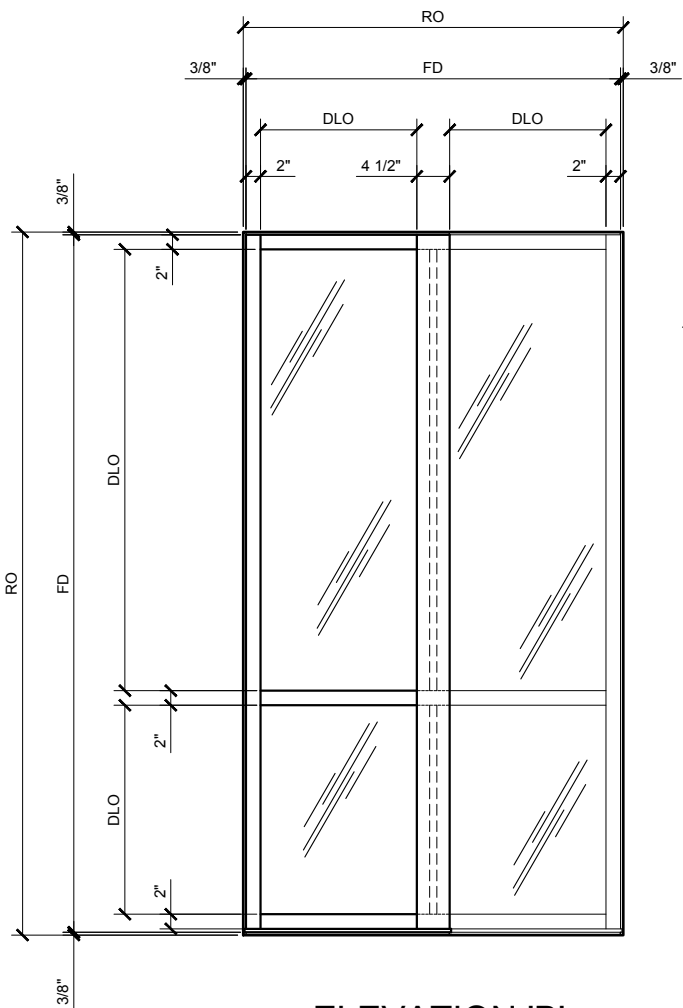
GLASS SIZING NOTE:
REFERENCE U.S. ALUMINUM
CATALOGS AND WEBSITE'S
LOAD CHARTS FOR SIZING
GUIDELINES.



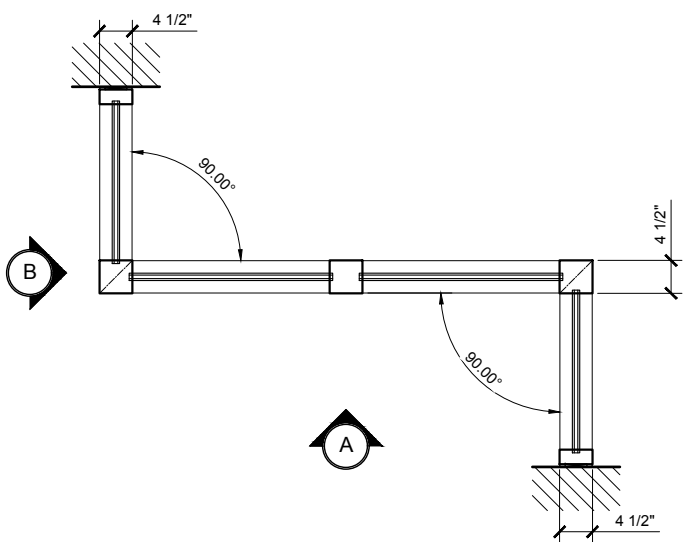
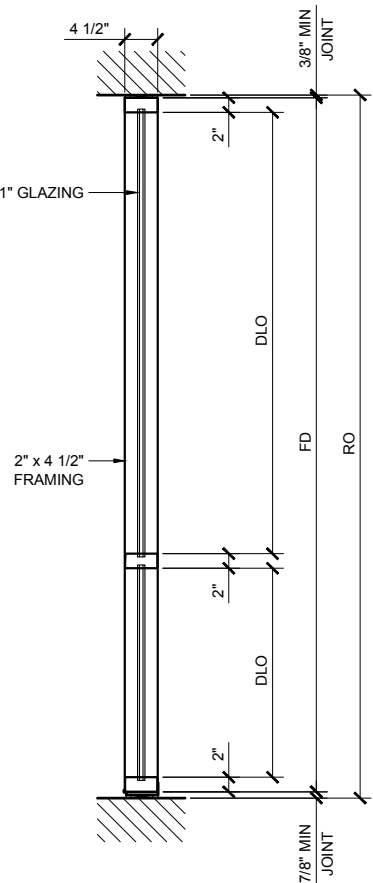
90 DEGREE CORNER ELEVATION



ELEVATION 'A'



ELEVATION 'B'



45X SERIES SPECIFICATIONS

Series 45X offers improved thermal performance using the Poly-Aluminizer™. United States Aluminum offers cost efficient versatile Center Glazed Systems with clean lines and superb performance. Series 45X may be interior or exterior glazed. A top load EPDM gasket is used to position and weatherseal the glass in the aluminum pocket.

- 2" x 4 1/2" frame
- 1" Glazing infill (SHOWN) Optional snap-in reducers for 1/4" - 3/4" glass are available
- Struct-Link™ thermal break
- Full range of accessory components
- Available in an array of architectural coatings and anodized finishes
- Screw spline assembly
- Shear block assembly
- Interior or Exterior Glazed

STANDARD ABBREVIATIONS

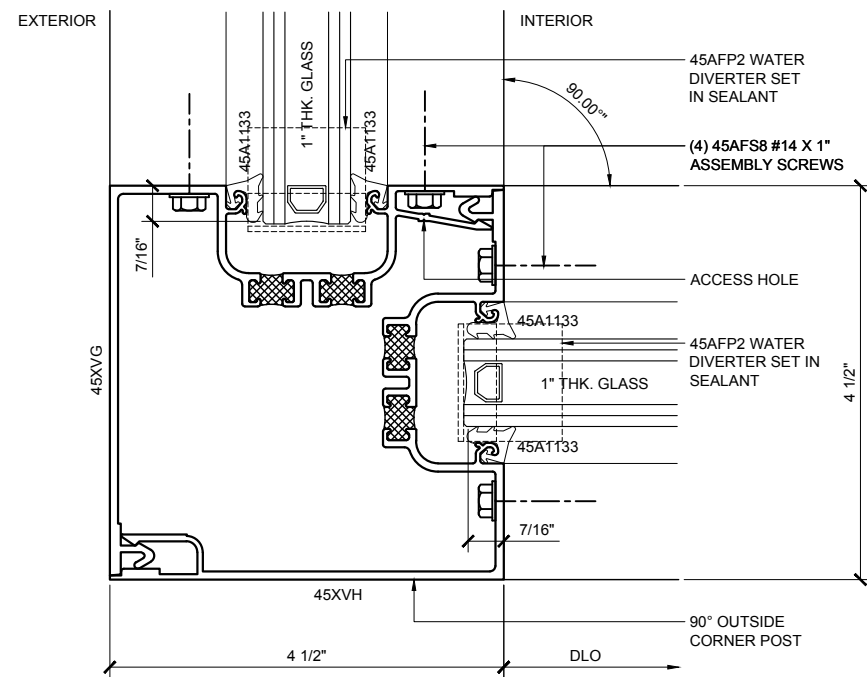
- | | |
|------|---------------------------|
| RO | ROUGH OPENING |
| FD | FRAME DIMENSION |
| DLO | DAYLITE OPENING |
| DO | DOOR OPENING |
| DD | DOOR DIMENSION |
| SMC | SURFACE MOUNTED CLOSER |
| OHCC | OVERHEAD CONCEALED CLOSER |

Revisions By:

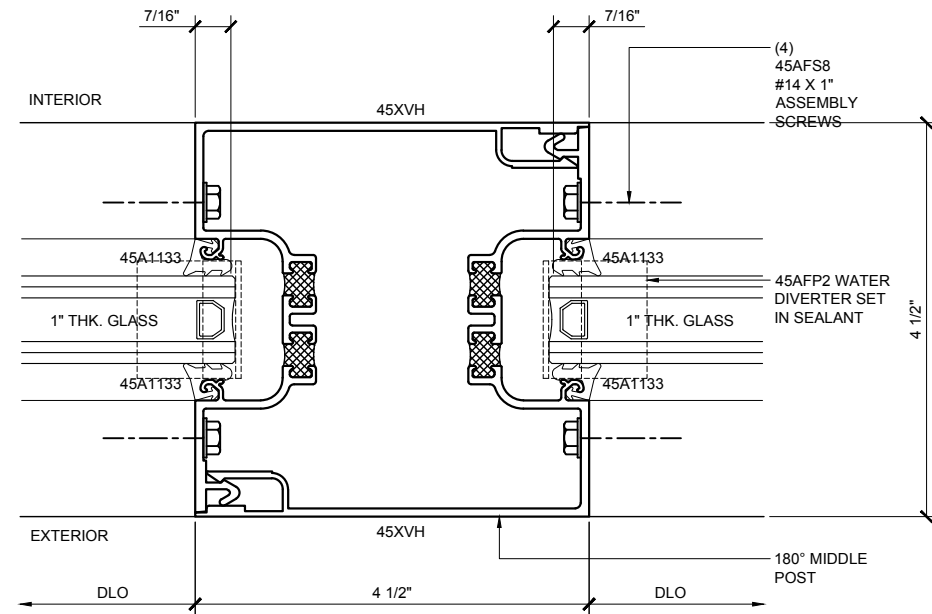


U.S. ALUMINUM
SERIES 45X - DUAL
HIGH PERFORMANCE
THERMALLY BROKEN
STOREFRONT SYSTEM

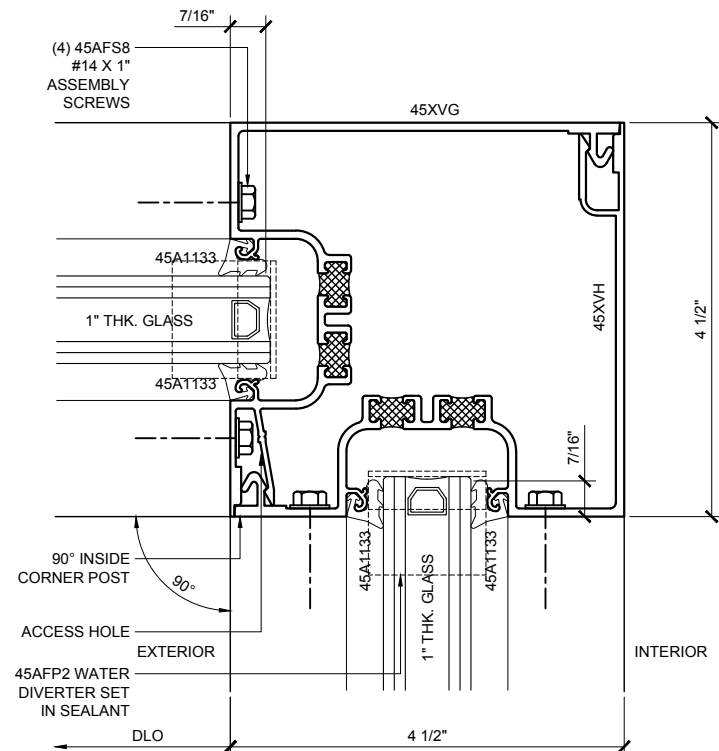
Drawn By: RPD
Date: 12/11/15
Scale: AS NOTED
File Name: 45X.dwg
Sheet



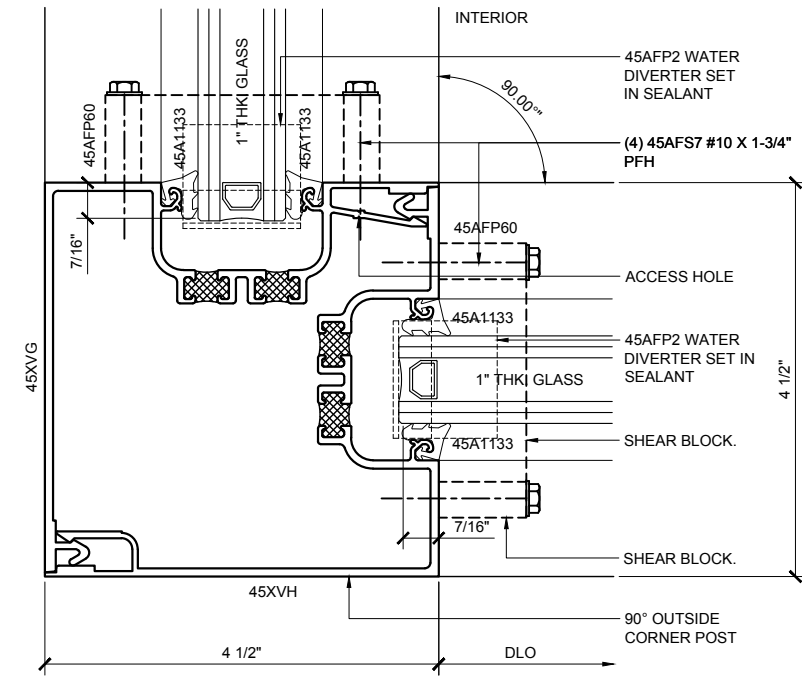
90° OUTSIDE CORNER POST DETAIL (39)
TYPICAL SCREW SPLINE ASSEMBLY MULLION



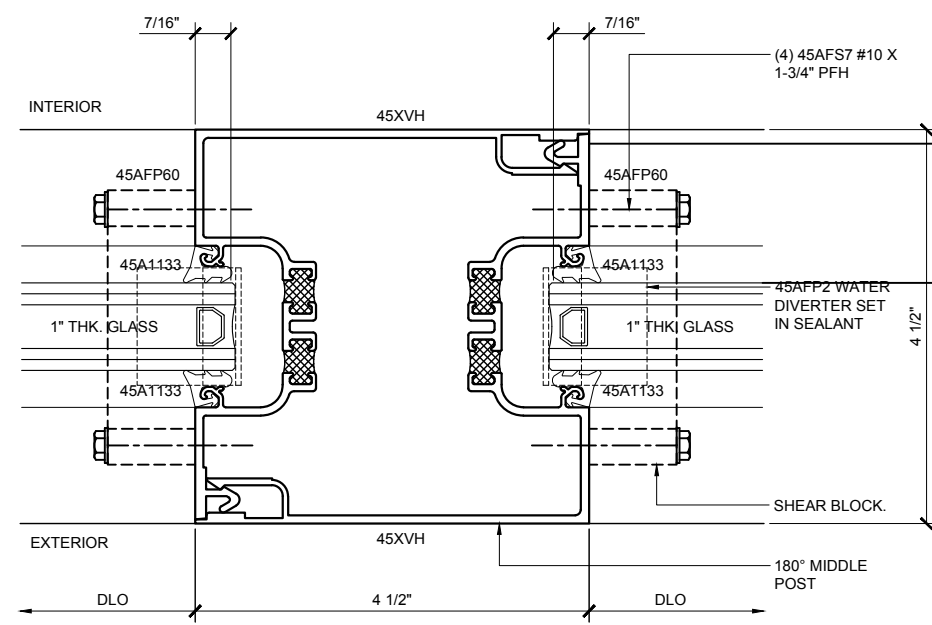
180° MIDDLE POST DETAIL (40)
TYPICAL SCREW SPLINE ASSEMBLY MULLION



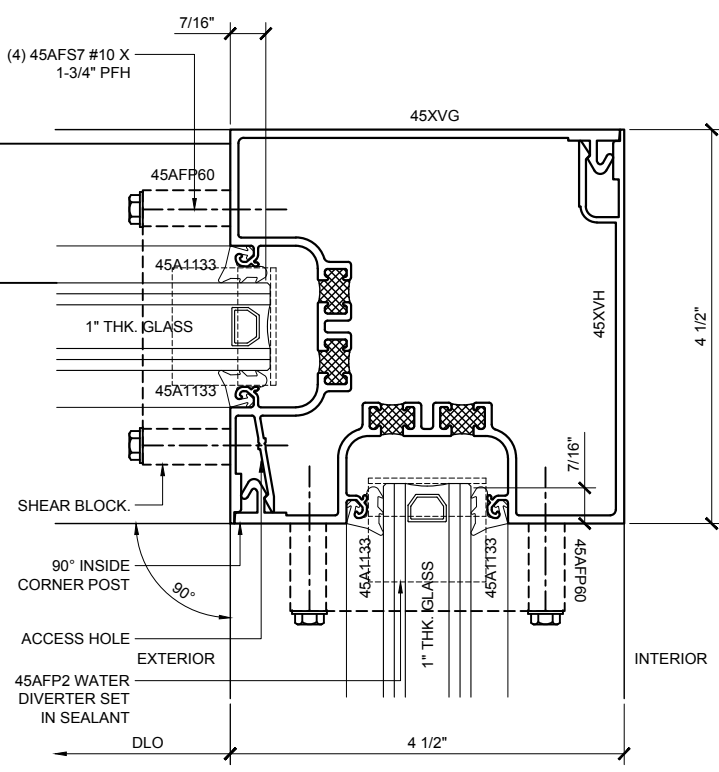
90° INSIDE CORNER POST DETAIL (41)
TYPICAL SCREW SPLINE ASSEMBLY MULLION



90° OUTSIDE CORNER POST DETAIL (39A)
TYPICAL SHEAR BLOCK ASSEMBLY MULLION



180° MIDDLE POST DETAIL (40A)
TYPICAL SHEAR BLOCK ASSEMBLY MULLION



90° INSIDE CORNER POST DETAIL (41A)
TYPICAL SHEAR BLOCK ASSEMBLY MULLION

Revisions By:

C.R. LAURENCE CO. ARCHITECTURAL PRODUCTS
2533 E. Vinton Avenue, Los Angeles, CA 90058-1897
PH: (800) 421-6144 FX: (800) 587-7501 www.crlaurence.com

Description:

U.S. ALUMINUM
SERIES 45X - DUAL
HIGH PERFORMANCE
THERMALLY BROKEN
STOREFRONT SYSTEM

Drawn By: RPD
Date: 12/11/15
Scale: AS NOTED
File Name: 45X.dwg

Sheet

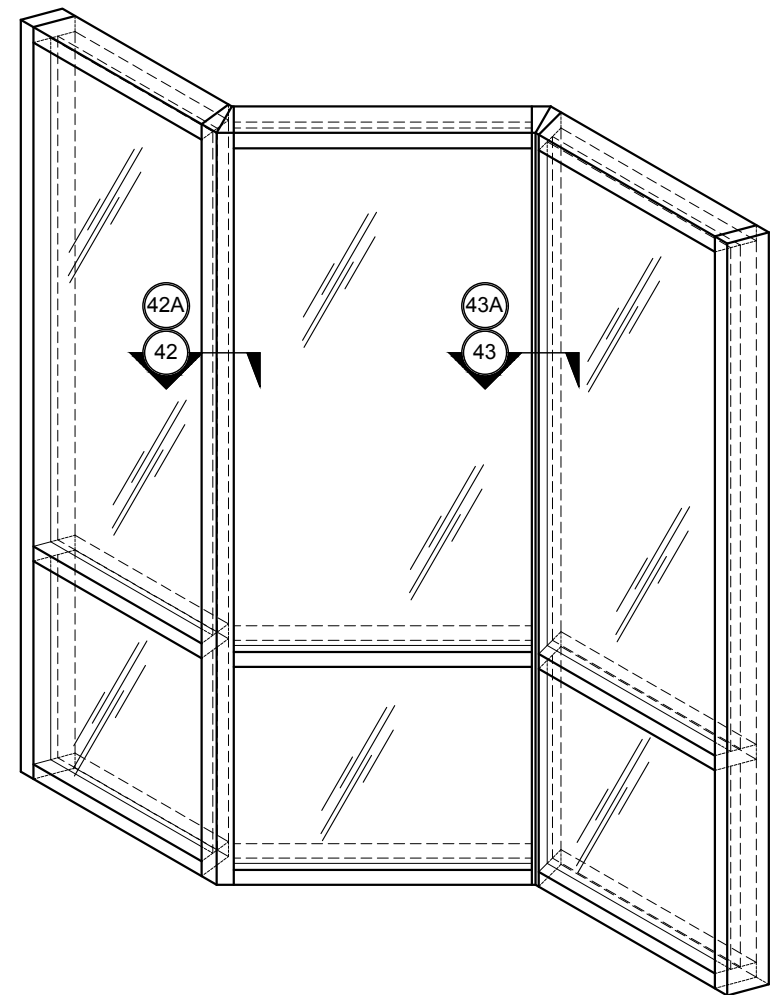
5.02



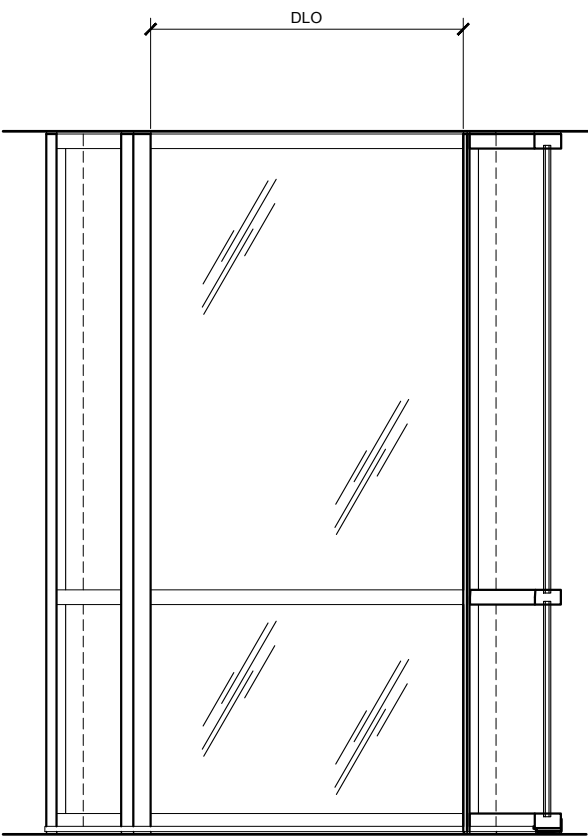
STOREFRONTS

SERIES 45X THERMAL FLUSH
CENTER-GLAZED STOREFRONT SYSTEM

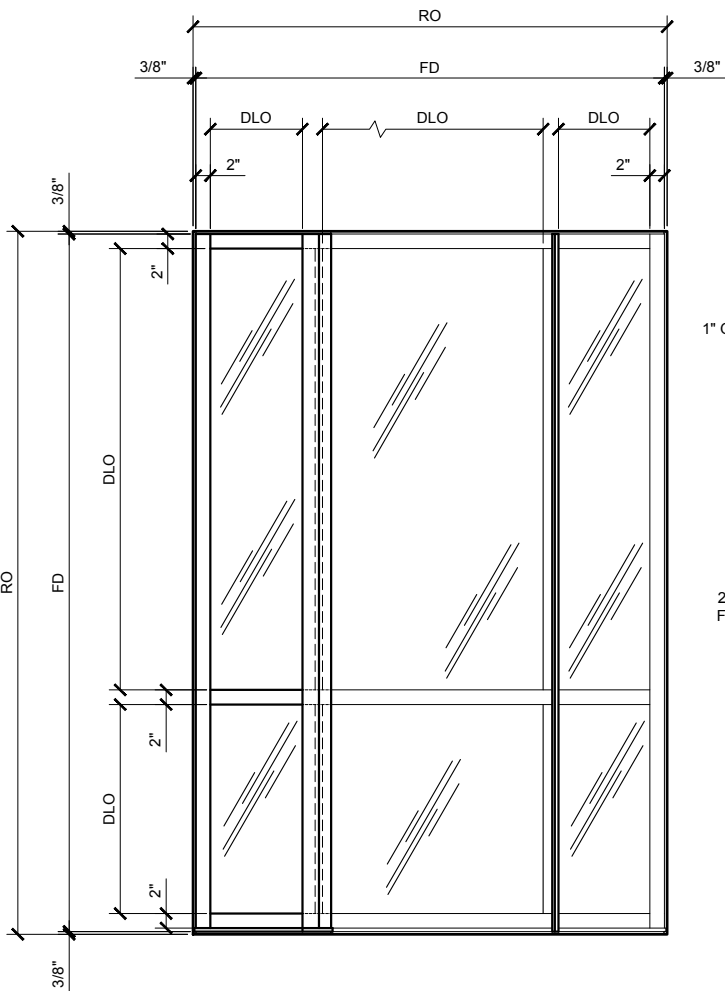
GLASS SIZING NOTE:
REFERENCE U.S. ALUMINUM
CATALOGS AND WEBSITE'S
LOAD CHARTS FOR SIZING
GUIDELINES.



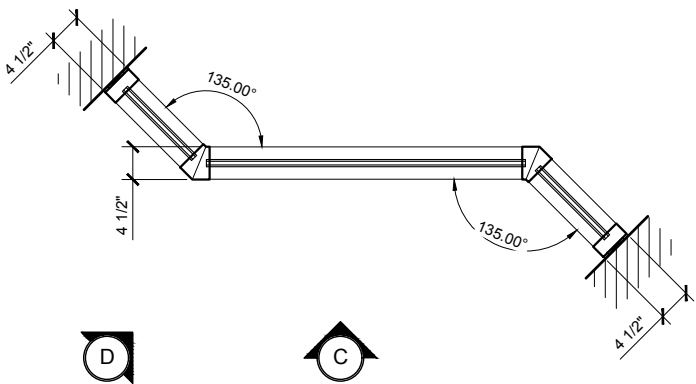
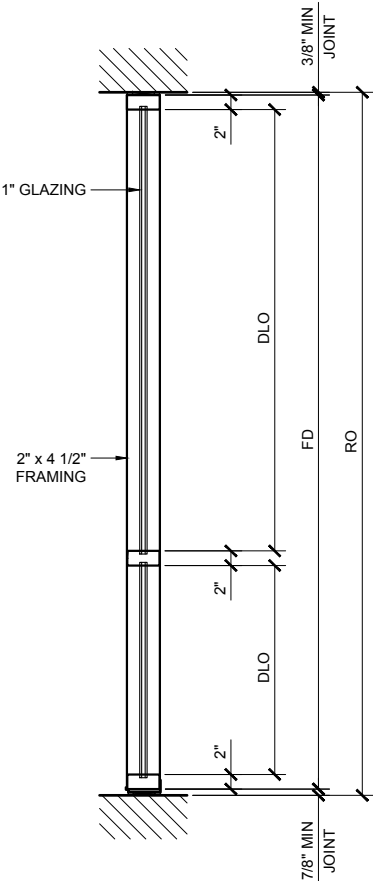
135 DEGREE CORNER ELEVATION



ELEVATION 'C'



ELEVATION 'D'



45X SERIES SPECIFICATIONS

Series 45X offers improved thermal performance using the Poly-Aluminizer™. United States Aluminum offers cost efficient versatile Center Glazed Systems with clean lines and superb performance. Series 45X may be interior or exterior glazed. A top load EPDM gasket is used to position and weatherseal the glass in the aluminum pocket.

- 2" x 4 1/2" frame
- 1" Glazing infill (SHOWN) Optional snap-in reducers for 1/4" - 3/4" glass are available
- Struct-Link™ thermal break
- Full range of accessory components
- Available in an array of architectural coatings and anodized finishes
- Screw spline assembly
- Shear block assembly
- Interior or Exterior Glazed

STANDARD ABBREVIATIONS

- | | |
|------|---------------------------|
| RO | ROUGH OPENING |
| FD | FRAME DIMENSION |
| DLO | DAYLITE OPENING |
| DO | DOOR OPENING |
| DD | DOOR DIMENSION |
| SMC | SURFACE MOUNTED CLOSER |
| OHCC | OVERHEAD CONCEALED CLOSER |

Revisions By:

CRL
ALUMINUM
C.R. LAURENCE CO. ARCHITECTURAL PRODUCTS
2503 E. Vernon Avenue, Los Angeles, CA 90058-1897
PH (800) 421-6144 FAX (800) 587-7261 www.crlaurence.com

Description:

U.S. ALUMINUM
SERIES 45X - DUAL
HIGH PERFORMANCE
THERMALLY BROKEN
STOREFRONT SYSTEM

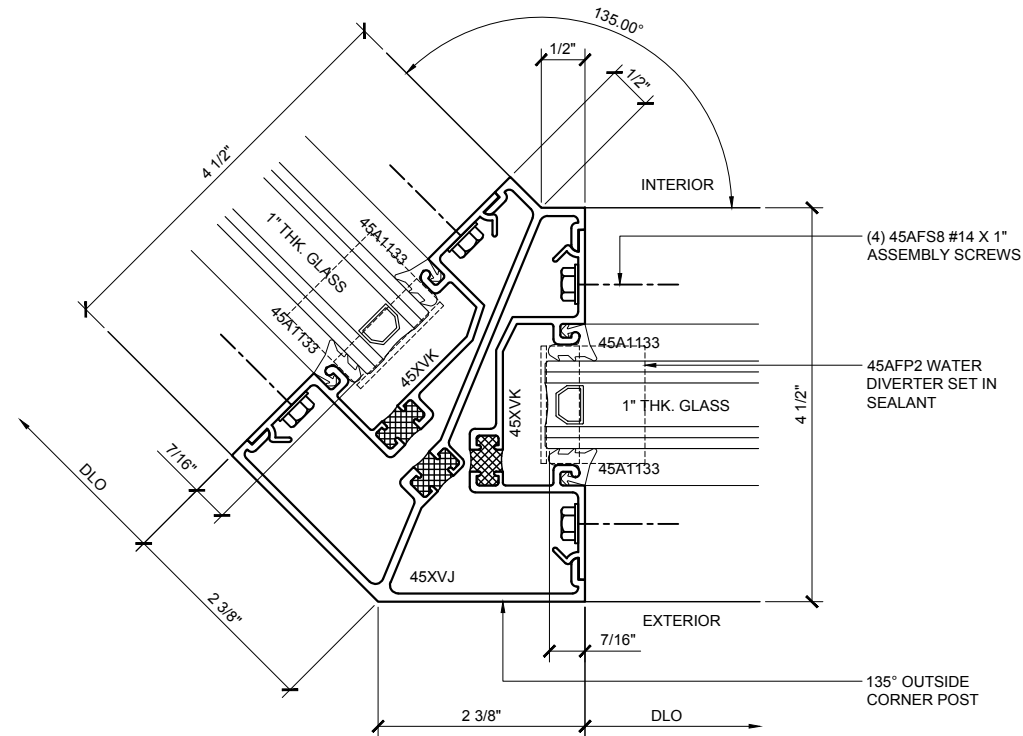
Drawn By: RPD

Date: 12/11/15

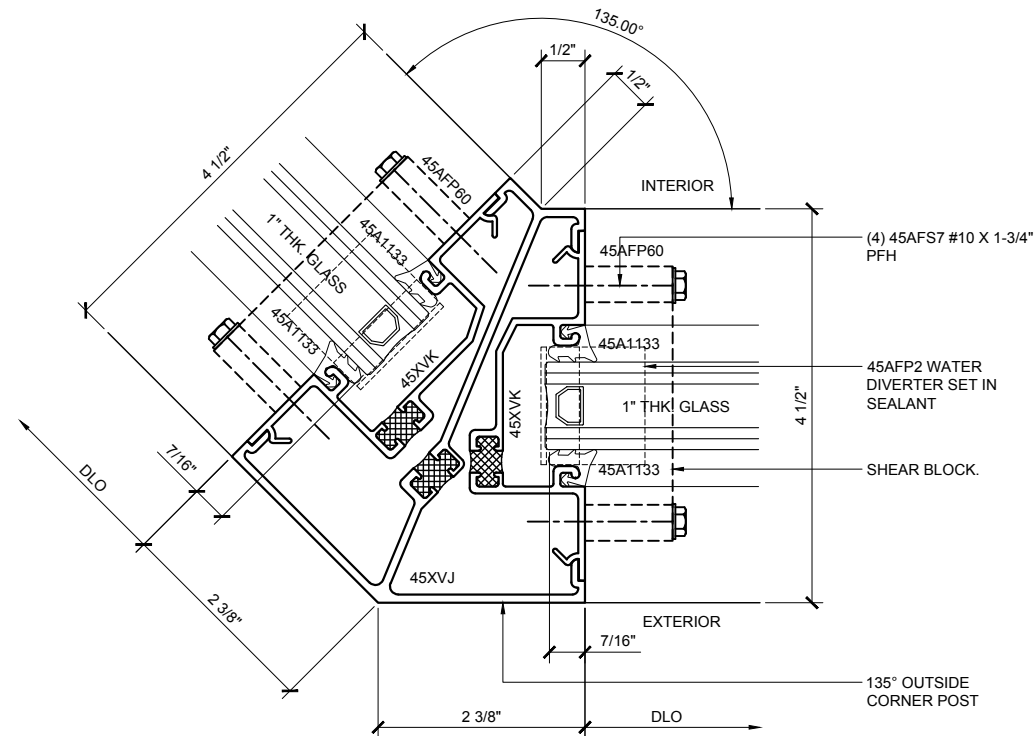
Scale: AS NOTED

File Name: 45X.dwg

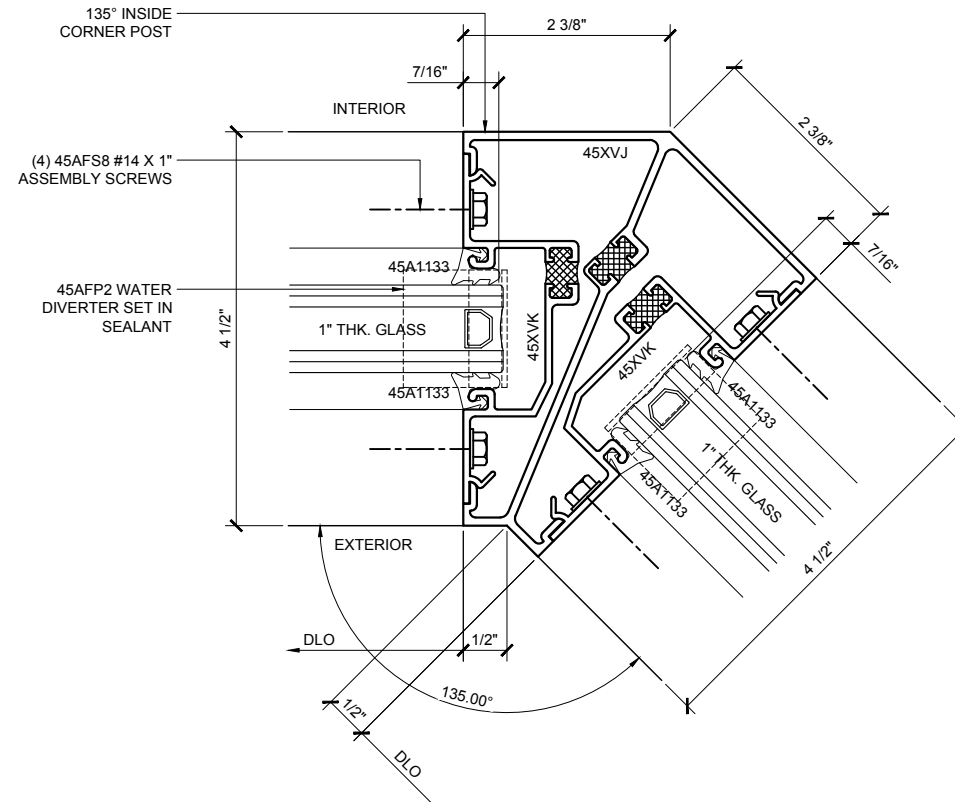
Sheet



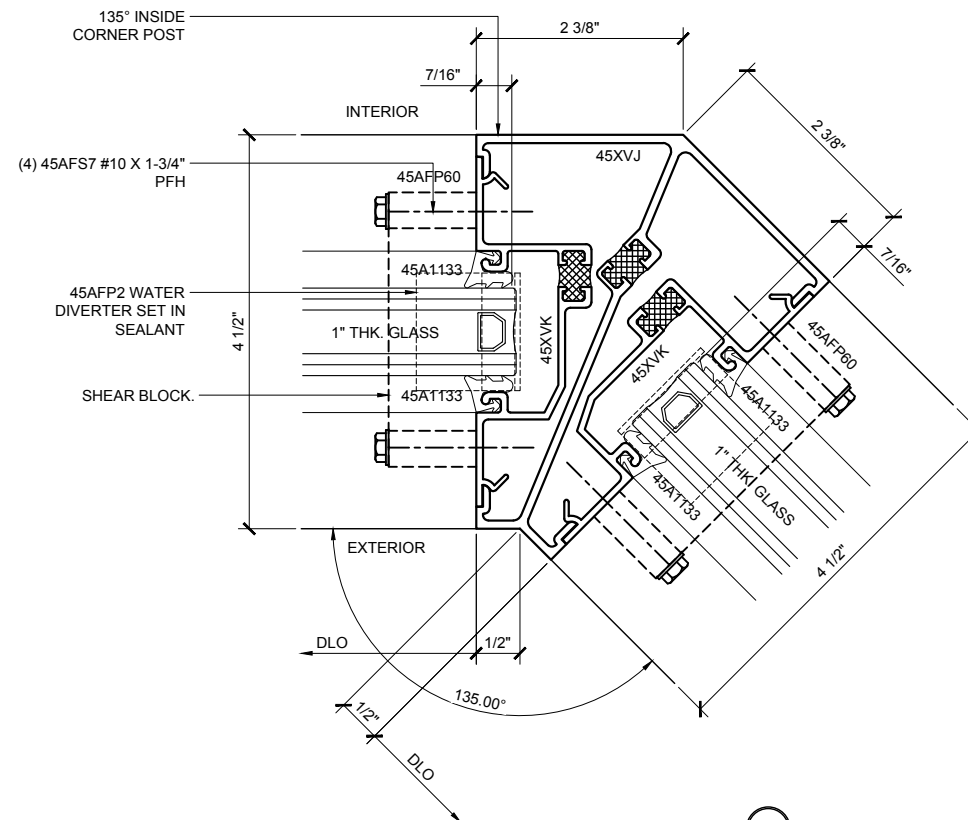
135° OUTSIDE CORNER POST DETAIL (42)
TYPICAL SCREW SPLINE ASSEMBLY MULLION



135° OUTSIDE CORNER POST DETAIL (42A)
TYPICAL SHEAR BLOCK ASSEMBLY MULLION



135° INSIDE CORNER POST DETAIL (43)



135° INSIDE CORNER POST DETAIL (43A)
TYPICAL SHEAR BLOCK ASSEMBLY MULLION

SERIES 45X - 2" X 4 1/2" THERMAL FLUSH CENTER-GLAZED STOREFRONT SYSTEM - OPTIONAL DETAILS - 135° CORNER CONDITIONS

Revisions By:

CAL
ALUMINUM
C.R. LAURENCE CO. ARCHITECTURAL PRODUCTS
2533 E. Vernon Avenue, Los Angeles, CA 90058-1897
PH (800) 421-6144 FAX (800) 587-7201 www.crlaurence.com

Discription:
U.S. ALUMINUM
SERIES 45X - DUAL
HIGH PERFORMANCE
THERMALLY BROKEN
STOREFRONT SYSTEM

Drawn By: RPD
Date: 12/11/15
Scale: AS NOTED
File Name: 45X.dwg
Sheet

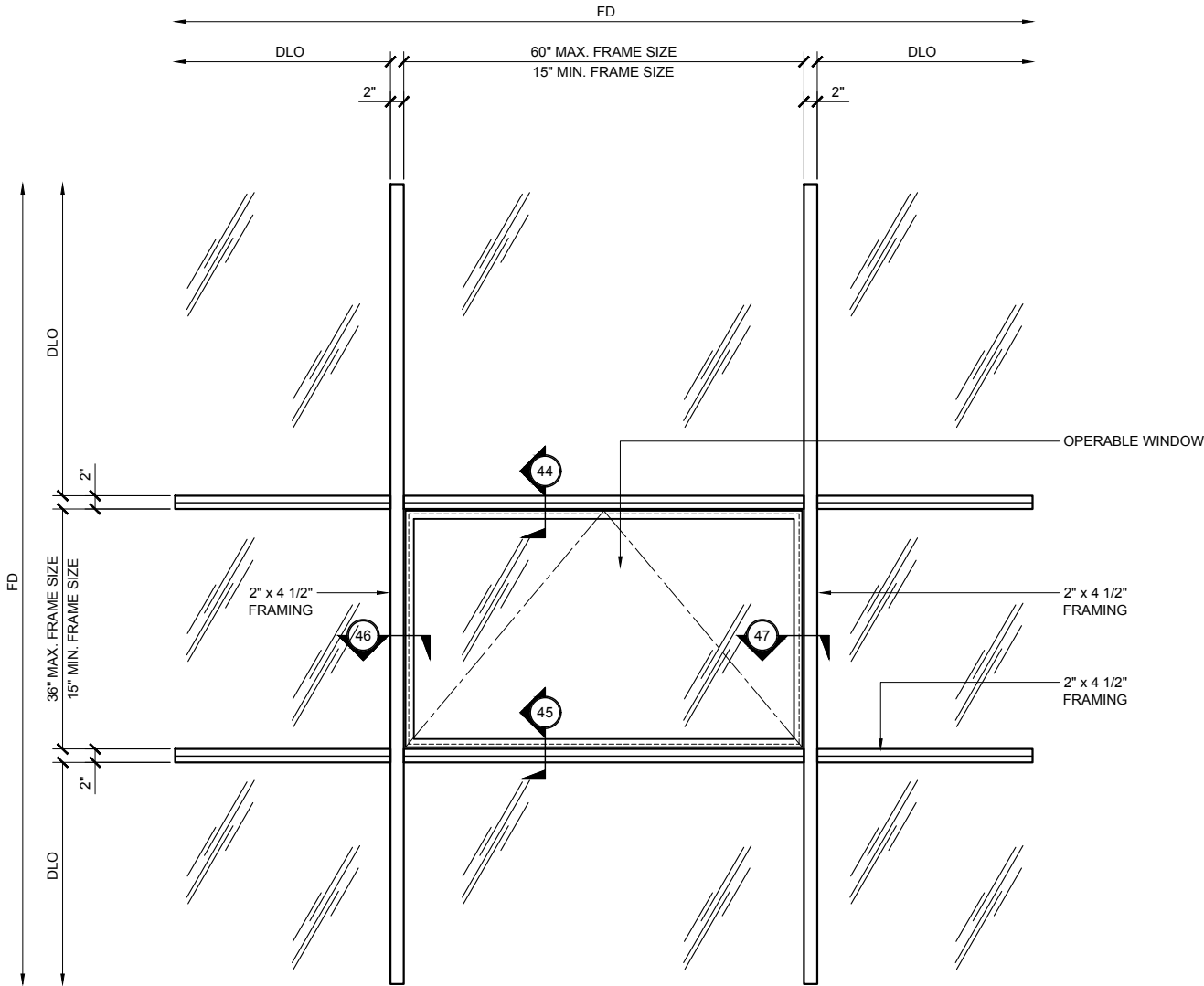
6.02



STOREFRONTS

SERIES 45X THERMAL FLUSH
CENTER-GLAZED STOREFRONT SYSTEM

GLASS SIZING NOTE:
REFERENCE U.S. ALUMINUM
CATALOGS AND WEBSITE'S
LOAD CHARTS FOR SIZING
GUIDELINES.



PROJECT-OUT WINDOW ELEVATION

45X SERIES SPECIFICATIONS

Series 45X offers improved thermal performance using the Poly-Aluminizer™. United States Aluminum offers cost efficient versatile Center Glazed Systems with clean lines and superb performance. Series 45X may be interior or exterior glazed. A top load EPDM gasket is used to position and weatherseal the glass in the aluminum pocket.

- 2" x 4 1/2" frame
- 1" Glazing infill (SHOWN) Optional snap-in reducers for 1/4" - 3/4" glass are available
- Struct-Link™ thermal break
- Full range of accessory components
- Available in an array of architectural coatings and anodized finishes
- Screw spline assembly
- Shear block assembly
- Interior or Exterior Glazed

STANDARD ABBREVIATIONS

RO	ROUGH OPENING
FD	FRAME DIMENSION
DLO	DAYLITE OPENING
DO	DOOR OPENING
DD	DOOR DIMENSION
SMC	SURFACE MOUNTED CLOSER
OHCC	OVERHEAD CONCEALED CLOSER

Revisions By:



Description:

U.S. ALUMINUM
SERIES 45X - DUAL
HIGH PERFORMANCE
THERMALLY BROKEN
STOREFRONT SYSTEM

Drawn By: RPD

Date: 12/11/15

Scale: AS NOTED

File Name: 45X.dwg

Sheet

