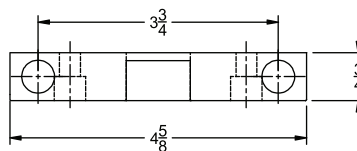
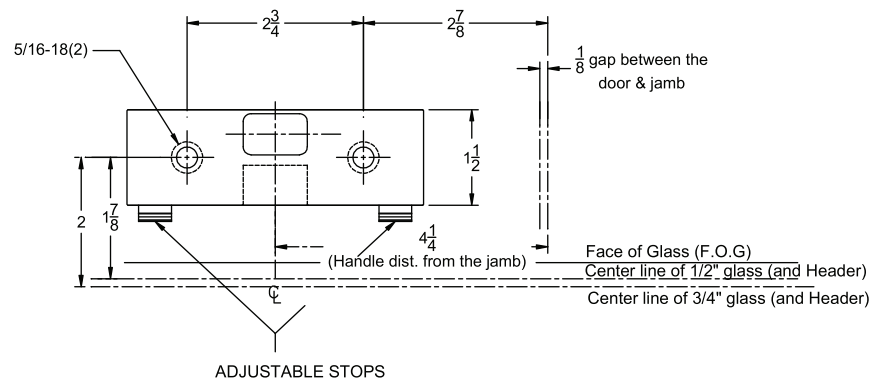


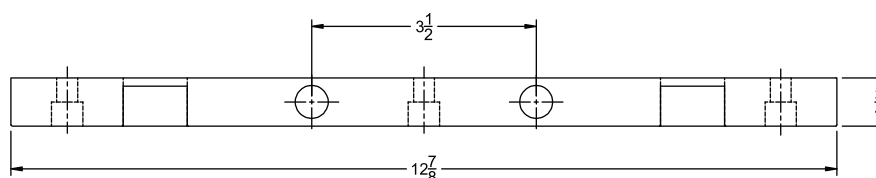
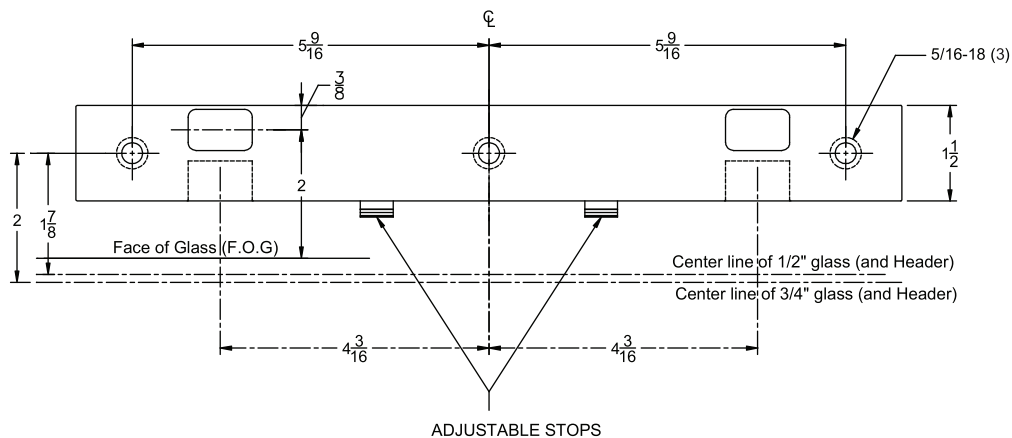
## HEADER PREPARATION FOR SINGLE AND DOUBLE ADJUSTABLE DOOR STOPS WITH MANUAL STRIKE

Prepare Header with threaded holes sized and located as illustrated

### SINGLE DOOR



### DOUBLE DOOR



## Installation and Adjustment of Door Stop/Strike

### Door Stop with MANUAL STRIKE

#### INSTALLATION

Install strike in header using provided socket head cap screws. Apply thread locker to bolt threads prior to tightening with 1/4" Allen wrench.

After door installation, when the door closes and comes to rest on the rubber stop pad(s), the retractable bolt should automatically move upward engaging the strike as illustrated. Distance from the Face of the Glass (F.O.G.) to the center of the handle should be 2".

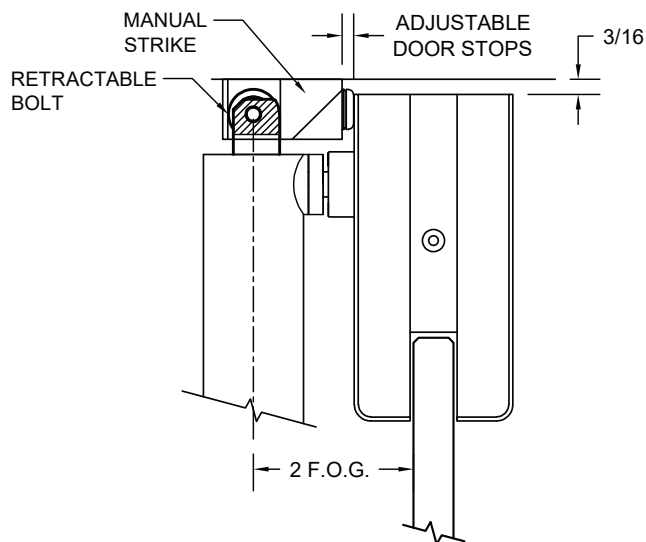
If retractable bolt is not engaging with the strike, adjustable door stops should be moved in, or if retractable bolt is loose inside the strike (doors are rattling), stops should be moved out.

#### ADJUSTMENT

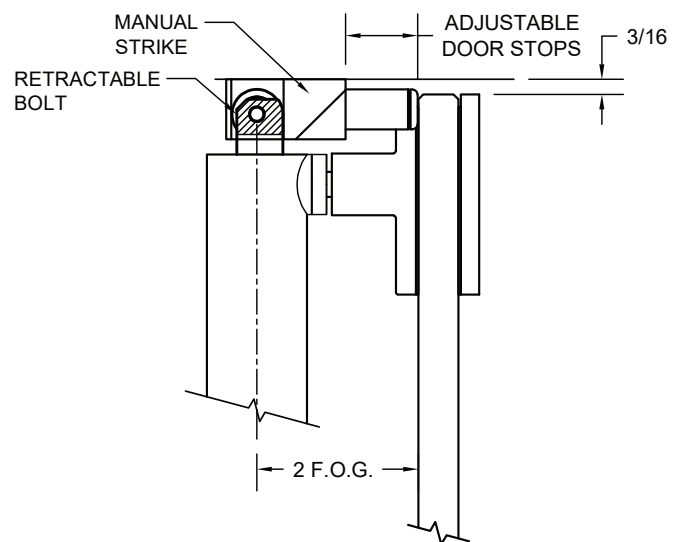
To adjust the door stop, remove the rubber end piece which uncovers a socket for a 1/4" Allen wrench, insert wrench and rotate in or out as needed. (One full turn is equal to approximately 1/16" of adjustment).

## DOOR STOP / STRIKE APPLICATIONS

**DOOR RAIL MOUNTING**



**DIRECT-TO-GLASS MOUNTING**



## Bolt Adjustment for Proper Engaging With the Strike

1. The retractable bolt can be adjusted up and down. For proper engagement, in the latched position, the adjustable bolt must penetrate up to the bottom of the blue area (terminating at an etched horizontal line). The maximum upward adjustment is 3/4" measured from the top of the bolt that retains the roller.
2. To make this adjustment, use a 5/64" Allen wrench, remove the #6 flat head screw near the top glass-facing side of Panic Handle. DO NOT Remove the #5 Round Head Slotted Screw.
3. Using your hand or wrench, rotate the bolt in either direction full 360° turn to obtain desired height adjustment.
4. Rotate bolt to align interior threaded hole with countersunk hole handle in tubing and re-fasten #6 flat head screw.

**\*FAILURE TO REPLACE THIS SCREW WILL ALLOW RETRACTABLE BOLT TO ROTATE CAUSING THE BOLT TO IMPROPERLY ENGAGE THE STRIKE.**

