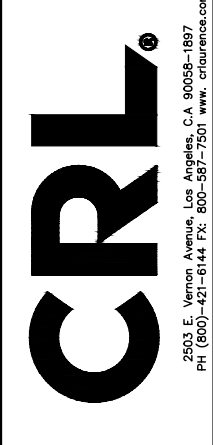


Revisions By:

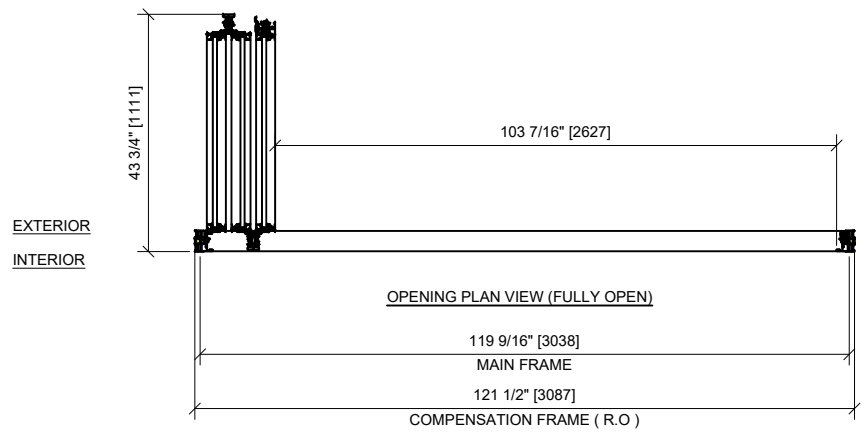
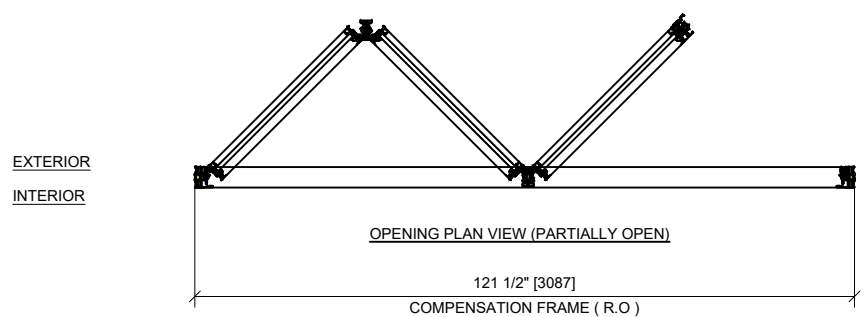
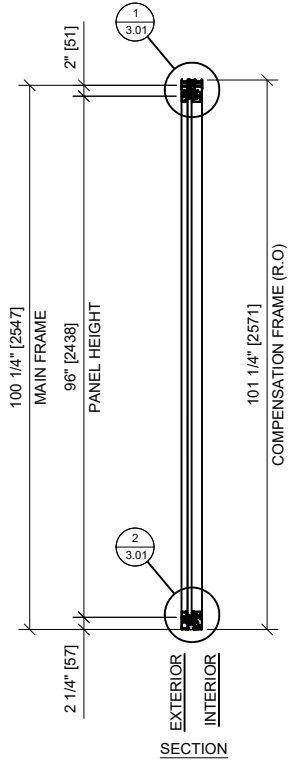
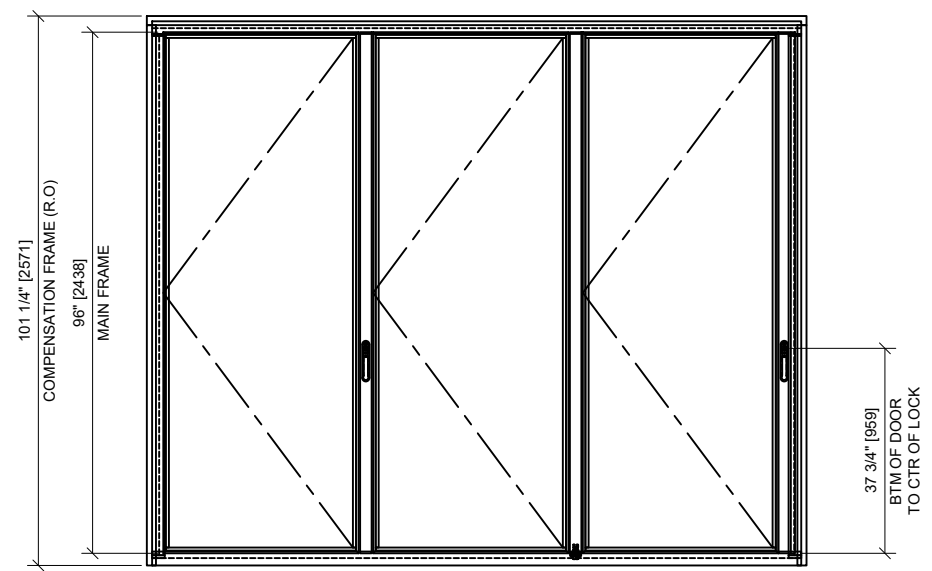
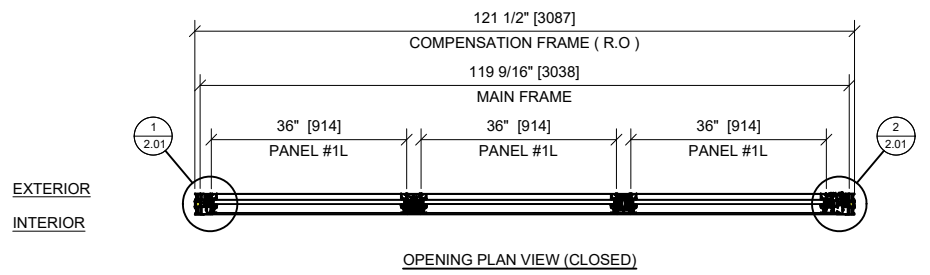


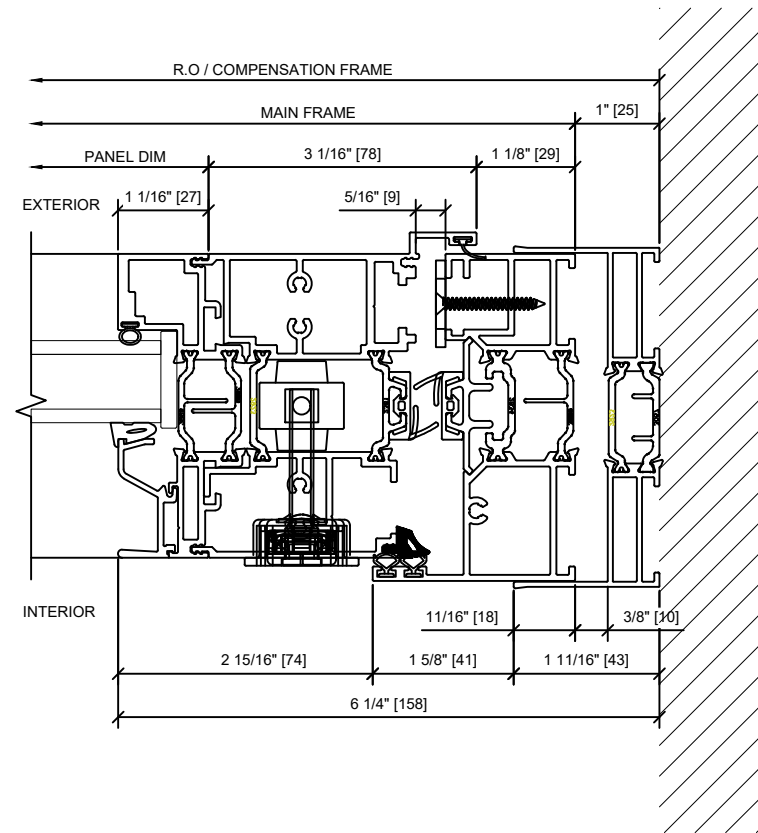
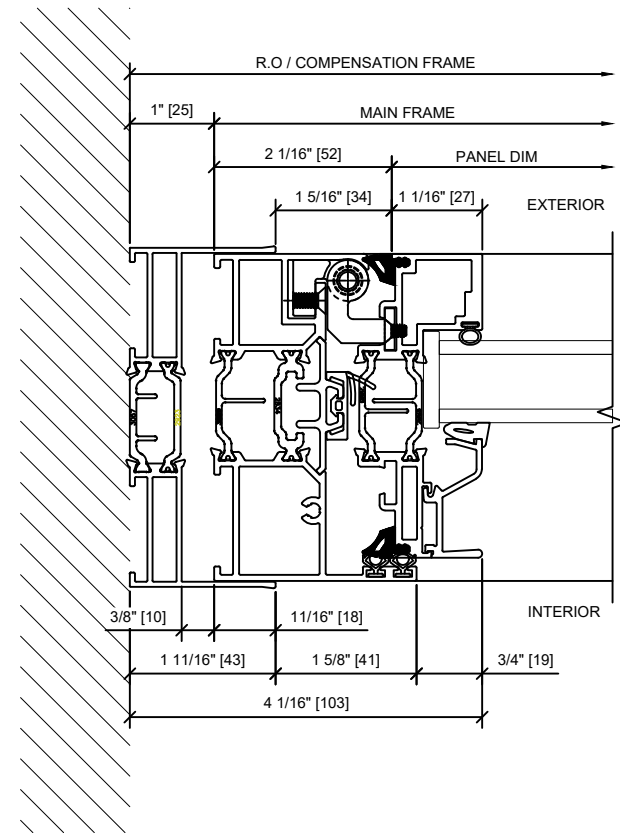
Description:  
 CRL S90 PALISADES  
 BI-FOLDING GLASS  
 WALL SYSTEM

Drawn By: HW  
 Date: 9/28/2020  
 Scale: AS NOTED  
 File Name:  
 SYS0047B\_S90\_PALISADES  
 Sheet

PALISADES DOOR CONFIGURATION

QUOTE # XXXXXX  
 CUSTOMER PO # XXXXXX  
 SYSTEM: S90  
 FRAME & PANEL FINISH: STANDARD RAL COLOR (CUSTOMER TO SPECIFY)  
 HARDWARE FINISH: BLACK / WHITE POWDER COAT  
 SILL: FLUSH / RAISED / MODIFIED FLUSH  
 SWING: IN / OUT  
 GLAZING: 1" INSULATED (3/16"x5/8"x3/16") BY OTHERS / BY CRL  
 QTY: 1 ( ONE ) THUS  
 ACTIVE DOOR: MULTI POINT KEYED LOCK ON CENTER / ACTIVE PANEL.  
 CYLINDER & CYLINDER / THUMBTURN & CYLINDER  
 2 POINT INTERIOR LEVER LATCHES ONLY, NO EXTERIOR ACCESS WHEN CLOSED AND LATCHED  
 MODIFIED 2 LEVER LATCHES, BACK TO BACK LATCHES, INTERIOR & EXTERIOR ACCESS  
 HINGE PULL





Revisions By:

**CRL**

2503 E. Vernon Avenue, Los Angeles, CA 90058-1897  
 PH (800)-421-6144 FX: 800-587-7501 www.crlaurence.com

Description:  
 CRL S90 PALISADES  
 BI-FOLDING GLASS  
 WALL SYSTEM

Drawn By: HW

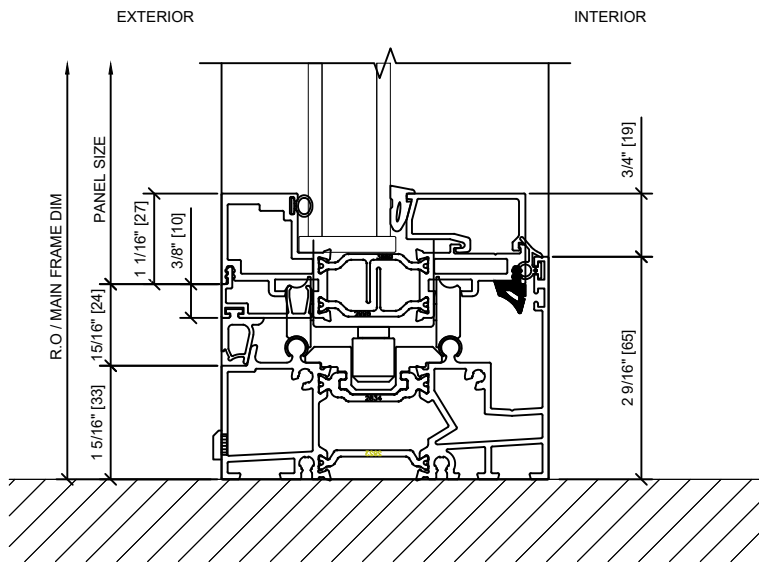
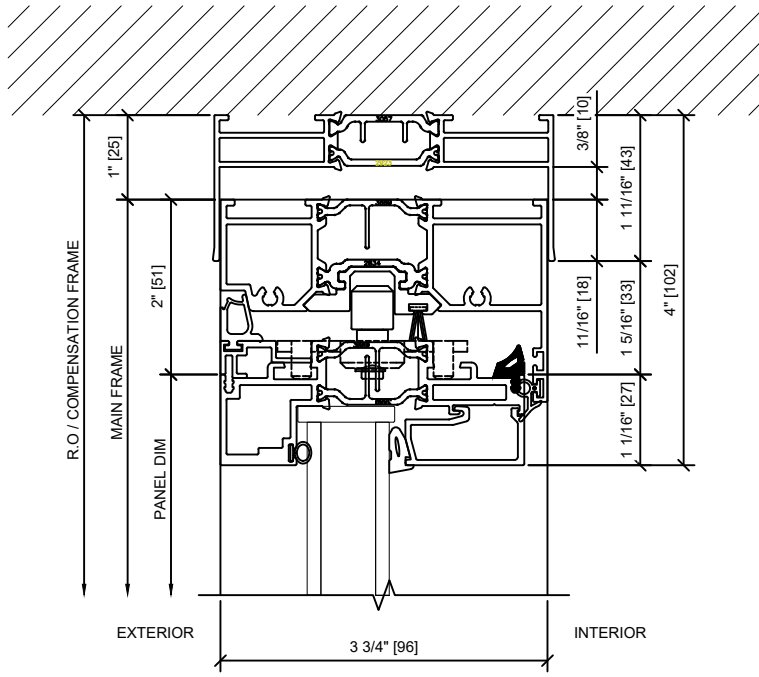
Date: 9/28/2020

Scale: AS NOTED

File Name:

SYS0047B\_S90\_PALISADES

Sheet



Revisions By:

**CRL**

2503 E. Vernon Avenue, Los Angeles, CA 90058-1897  
 PH (800)-421-6144 FX: 800-587-7501 www.crlaurence.com

Description:  
 CRL S90 PALISADES  
 BI-FOLDING GLASS  
 WALL SYSTEM

Drawn By:HW

Date: 9/28/2020

Scale: AS NOTED

File Name:

SYS0047B\_S90\_PALISADES

Sheet