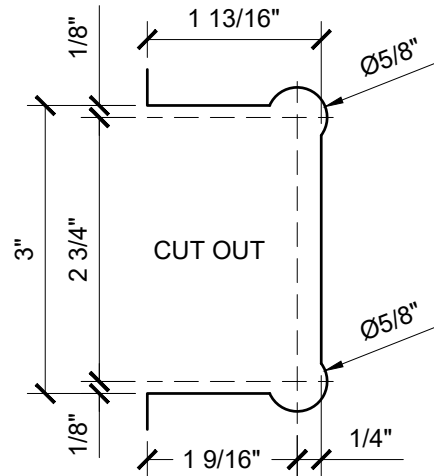
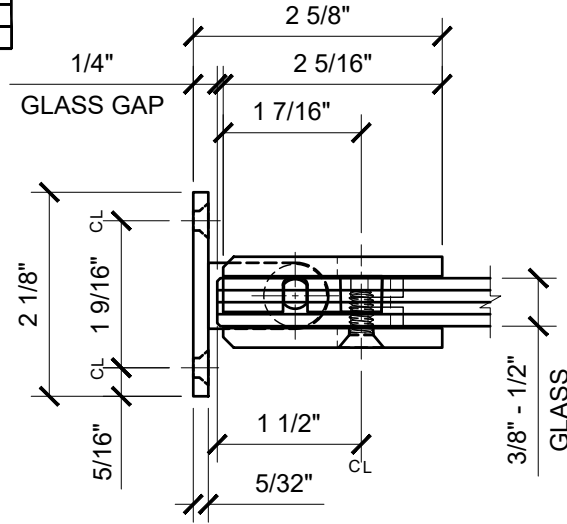
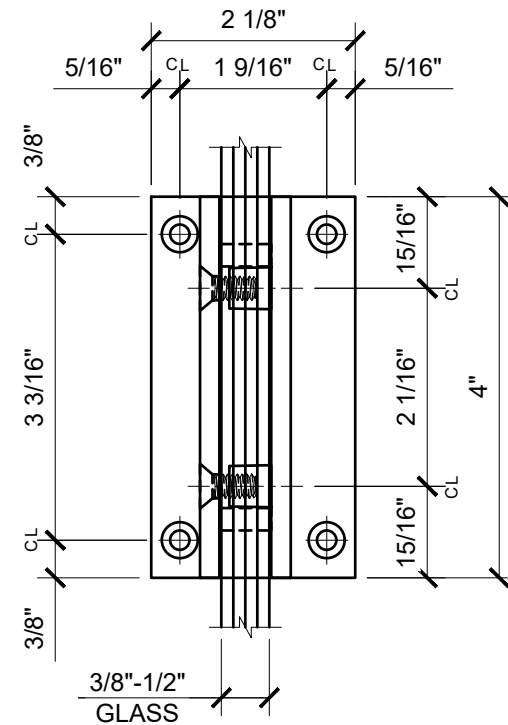
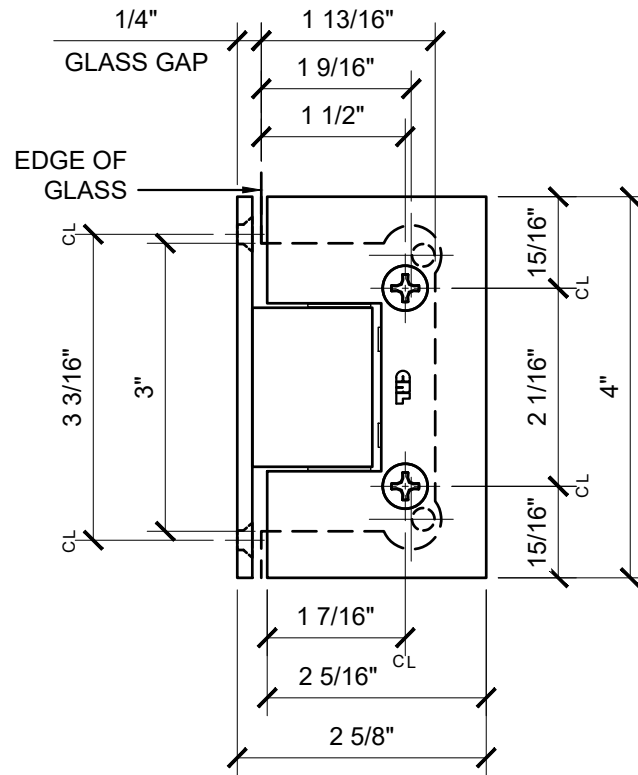


USE OF GASKETS

FOR 3/8" (10mm) GLASS: USE ONE THICK GASKET ON EACH SIDE  
 FOR 1/2" (12mm) GLASS: USE ONE THIN GASKET ON EACH SIDE



GLASS FABRICATION TEMPLATE



V1EN037XX - CRL VIENNA SERIES WALL MOUNT FULL BACK PLATE HINGE

CATALOG NUMBER	FINISH
V1E037CH	CHROME
V1E037MBL	MATTE BLACK
V1E037BR	BRASS
V1E0370RB	OIL RUBBED BRONZE
V1E037ABC0	ANTIQUE BRUSHED COPPER
V1E037ABL	ALL BLACK
V1E037ABN	ANTIQUE BRUSHED NICKEL
V1E037ABR	ANTIQUE BRASS
V1E037ABRZ	ANTIQUE BRONZE
V1E037AW	ALL WHITE
V1E037BBRZ	BRUSHED BRONZE
V1E037BC0	BRUSHED COPPER
V1E037BL	BLACK W/ CHROME ACCENTS
V1E037BN	BRUSHED NICKEL
V1E037BSC	BRUSHED SATIN CHROME
V1E037CBA	CHROME W/ BRASS ACCENTS
V1E037GM	GUN METAL
V1E037GB	GOLD PLATED
V1E037PN	POLISHED NICKEL
V1E037SB	SATIN BRASS
V1E037SC	SATIN CHROME
V1E037SN	SATIN NICKEL
V1E037WC	WHITE W/ CHROME ACCENTS

DATE: 10/22/17  
 SCALE: 6"=1'-0"  
 DRAWN BY: VM

DESCRIPTION: CRL V1E037 —  
 VIENNA SERIES  
 WALL MOUNT FULL BACK PLATE HINGE

C.R.LAURENCE CO. ARCHITECTURAL PRODUCTS  
 2503 E. Vernon Avenue, Los Angeles, C.A 90058-1897  
 PH (800)-421-6144 FX: 800-587-7501 www.crlaurence.com

