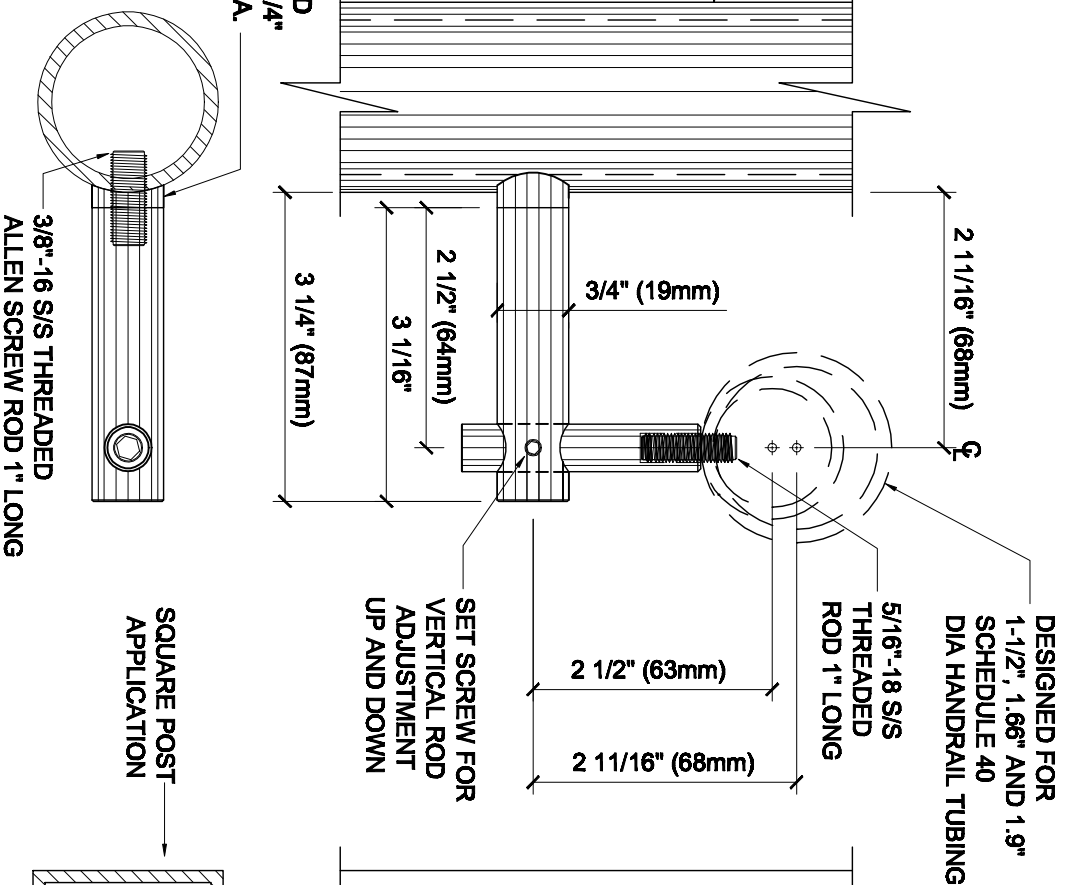


# CRL POST MOUNTED HAND RAIL BRACKET FOR ROUND POST AND FLAT POST APPLICATIONS

DESIGNED FOR  
MOUNTING TO  
1-1/4" SCH. 40  
1.66" O.D. DIA. POST  
AND 1-1/2" SCH. 40  
1.9" O.D. POST

REMOVABLE COPED  
ADAPTERS FOR 1 1/4"  
SCH40 1.66" O.D. DIA.  
1.9" O.D. POST



## ROUND POST APPLICATION

DESIGNED FOR  
1-1/2", 1.66" AND 1.9"  
SCHEDULE 40  
DIA HANDRAIL TUBING

5/16"-18 S/S  
THREADED  
ROD 1" LONG

2 1/2" (63mm)

2 11/16" (68mm)

SET SCREW FOR  
VERTICAL ROD  
ADJUSTMENT  
UP AND DOWN

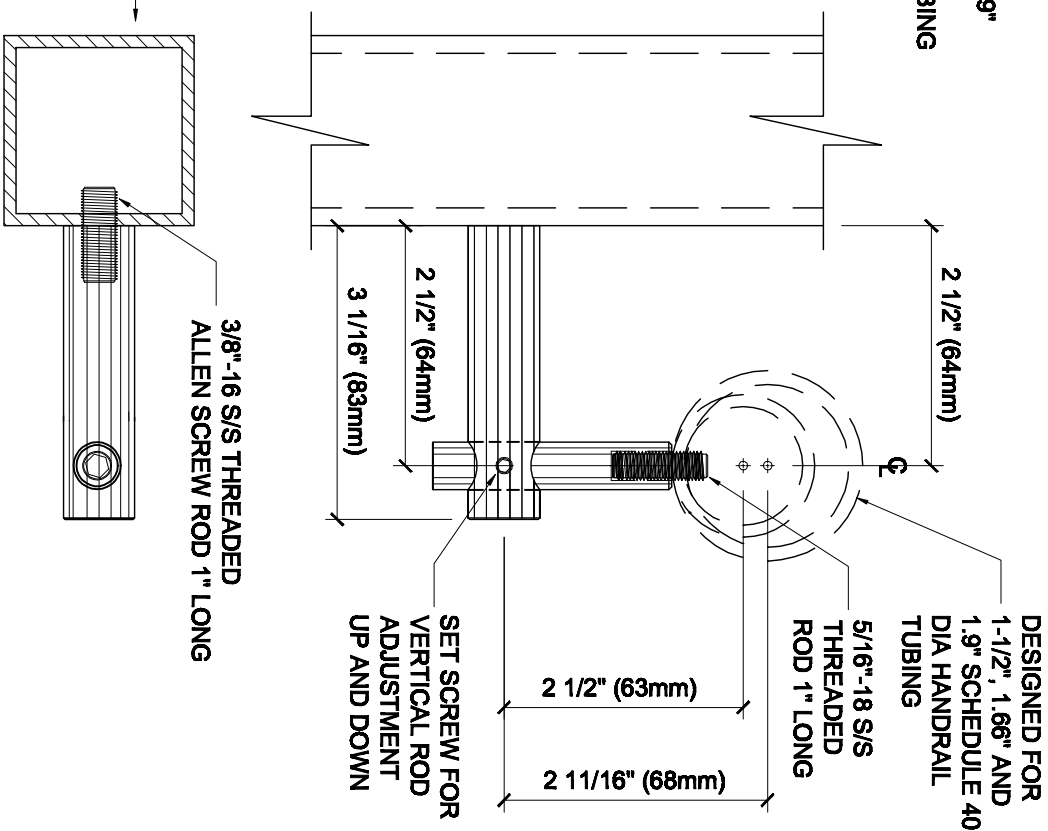
2 1/2" (64mm)

3 1/16" (83mm)

3/8"-16 S/S THREADED  
ALLEN SCREW ROD 1" LONG

SQUARE POST  
APPLICATION

## SQUARE POST APPLICATION



DESIGNED FOR  
1-1/2", 1.66" AND  
1.9" SCHEDULE 40  
DIA HANDRAIL  
TUBING

5/16"-18 S/S  
THREADED  
ROD 1" LONG

2 1/2" (63mm)

2 11/16" (68mm)

SET SCREW FOR  
VERTICAL ROD  
ADJUSTMENT  
UP AND DOWN

2 1/2" (64mm)

3 1/16" (83mm)

3/8"-16 S/S THREADED  
ALLEN SCREW ROD 1" LONG

CATALOG NUMBER	FINISH
HR2FPBS	BRUSHED S/S
HR2FPPS	POLISHED S/S
HR2FPMA	MILL ALUMINUM

### POST MOUNTED BRACKET ASSEMBLY DETAIL USED FOR

**CRL**  **ARCHITECTURAL PRODUCTS**  
Pht: 800-421-6144 Fx: 800-282-3289  
WWW.CRLAURENCE.COM

DESCRIPTION: **POST MOUNTED BRACKET ASSEMBLY**  
FOR 1-1/2", 1.66" AND 1.9" SCHEDULE 40 DIA HANDRAIL TUBING

CAT. NO. (SEE CHART)	DATE: 02-04-09
FILE NAME: HR2FP	SCALE: N.T.S.
DRAWN BY: R.A.	CHECKED BY: C.H.
SHT 1	OF 1