

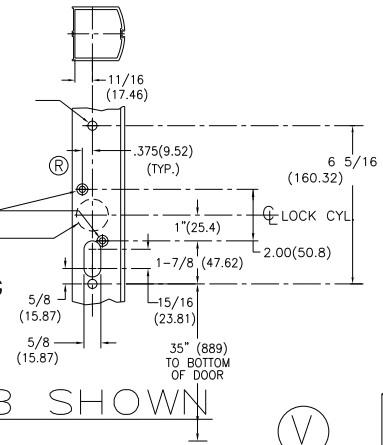
FOR- ACTIVE PAD:
 DRILL 17/64 (6.74) DIA. (2 PLCS.)
 FRONT SIDE

FOR INACTIVE PAD:
 DRILL .203 (5.15) DIA.
 TAP 1/4-20 (M6-1.0) 2 PLCS.

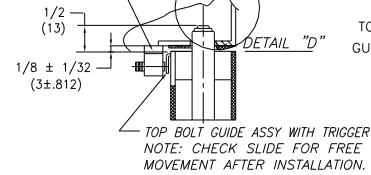
DRILL & C'SK FOR #8 F.H.M.S.
 ACTIVE PUSH SIDE
WHEN USING 86 LOCK ONLY
 1-13/32 (35.71) DIA. LOCK SIDE

**DRILLING & ROUTING
 FOR ACTIVE
 SIDE**

LH/RHRB SHOWN

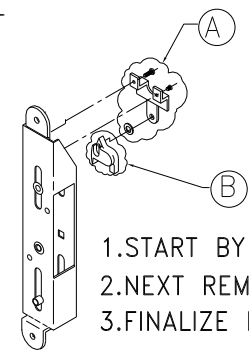


TRIP BRACKET USED AS TRIGGER
 RELEASE INSTEAD OF DOOR STOP
 WHEN DOOR STOP IS NOT PART
 OF HEADER.
 (IF GAP IS LARGER,
 ADD SHIM(S) AS
 REQUIRED.)



NOTE: WHEN NOT
 USING MORTISE
 CYLINDER, PROCEED
 WITH THE
 FOLLOWING:

1. START BY REMOVING BRACKET (A),
2. NEXT REMOVE DOGGING PAWL (B)
3. FINALIZE BY RE-ATTACHING BRACKET (A)



THE SAFETY FEATURES OF THIS PRODUCT ARE
 ESSENTIAL TO ITS COMPLIANCE WITH EN 1125.
 NO MODIFICATION OF ANY KIND, OTHER THAN
 THOSE DESCRIBED IN THESE INSTRUCTIONS, ARE
 PERMITTED.

MOUNTING INSTRUCTIONS

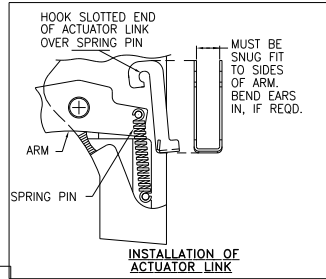
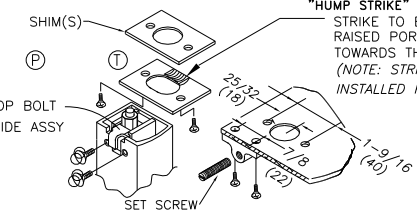
1. DETERMINE HAND OF DOOR, THEN PREPARE STILES PER TEMPLATES:
 10-474 DRILL TEMPLATE FOR ACTIVE STILE.
 10-475 DRILL TEMPLATE FOR INACTIVE STILE.
2. IF LOCK IS TO BE USED, PREPARE ACTIVE STILE PER TEMPLATE 10-476.
3. INSTALL ROD & CASE ASSY INTO ACTIVE STILE AND SECURE WITH TWO
 1/4-20 (M6-1.0) SHOULDER STUDS. (IF USING LOCK, PERFORM INST.
 5 & 6 NEXT.)
4. PLACE ACTIVE PAD OF STILE MAKING CERTAIN THAT ACTUATOR LINK
 IS PROPERLY ENGAGED (UNDERSIDE OF PIN) TO MECHANISM AND SECURE
 PAD. ADJUST BOLTS BY SCREWING IN OR OUT TILL TOP OF BOLT IS
 FLUSH WITH EDGE OF DOOR, WHEN THE PUSH BAR IS FULLY DEPRESSED.
 THEN INSTALL BOLT GUIDES WITH SIX #10 x 1/2 F.H. SELF TAPPING SCREWS.
5. INSERT LOCK CYLINDER INTO LOCK MOUNTING PAD AND SECURE
 WITH LOCK RING PROVIDED. MAKE SURE CYLINDER AND LOCK
 MOUNTING PAD ARE INSTALLED AS SHOWN.
 SECURE WITH 2 EA. 8-32 x 1-15/16 FHMS.



7. DRILL .203 (5.15) DIA. AND TAP 1/4-20 (M6-1.0) THD. (2 PLCS.)
 ON INACTIVE STILE AND INSTALL TWO 1/4-20 (M6-1.0) SHOULDER STUDS.
 MOUNT INACTIVE PAD TO STILE WITH THREE 1/4-20 (M6-1.0) SOC. SET SCREWS.
 8. CUT LENGTH OF PANIC BAR BY MEASURING FROM INSIDE TO INSIDE
 EDGE OF MOUNTING PADS. CAUTION: BAR MUST BE CUT TO EXACT
 LENGTH WITHIN ±1/32 (±.787) TO WORK PROPERLY.
 9. LOOSEN INACTIVE PAD, INSTALL AND SECURE PANIC BAR WITH TWO
 1/4-20 (M6-1.0) x 1 (25.4) OVAL HD. M.S. (PHIL.)
- DOGGING OF DEVICE WITH CYLINDER KEY**
 TO DOG DEVICE INSERT KEY, FULL DEPRESS PANIC BAR, HOLD
 DOWN & TURN KEY CLOCKWISE TO APPROX. TWO O' CLOCK. RETURN
 KEY TO CENTER FOR REMOVAL.
 TO UNDOG TURN KEY COUNTERCLOCKWISE.
DOGGING DEVICE WITH DOGGING PIN
 PUSH PANIC BAR DOWN AND HOLD. PUSH DOGGING PIN UP WITH
 SCREW DRIVER AND TURN 90° TO 180° EITHER DIRECTION,
 UNTIL DOGGING PIN RELEASES.

NOTE:
 THIS PRODUCT IS DESIGNED AND MFRG. TO MEET
 CLASSIFICATION NO. 37601321A,
 EN1125 STANDARD.

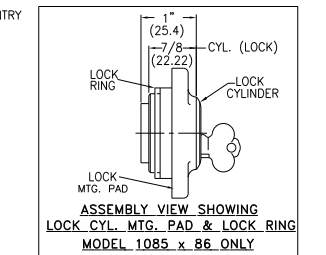
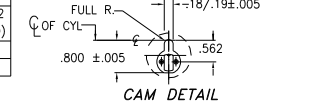
"HUMP STRIKE" USED ON HEADER ONLY.
 STRIKE TO BE INSTALLED WITH
 RAISED PORTION POSITIONED
 TOWARDS THE OUTSIDE.
 (NOTE: STRIKE MUST BE
 INSTALLED PER DETAIL "D")



REQUIRED CYLINDER

MAKE OF CYLINDER	RECOMMENDED CAMS
YALE	YALE # 1161-L
CORBIN	MS-4800
RUSSWIN	MS-4800
SCHLAGE	SCHLAGE B-502-292
ILCO	4002-2R (LOCKWOOD)
ADAMS RITE	MS-1850
SARGENT	47-40-101

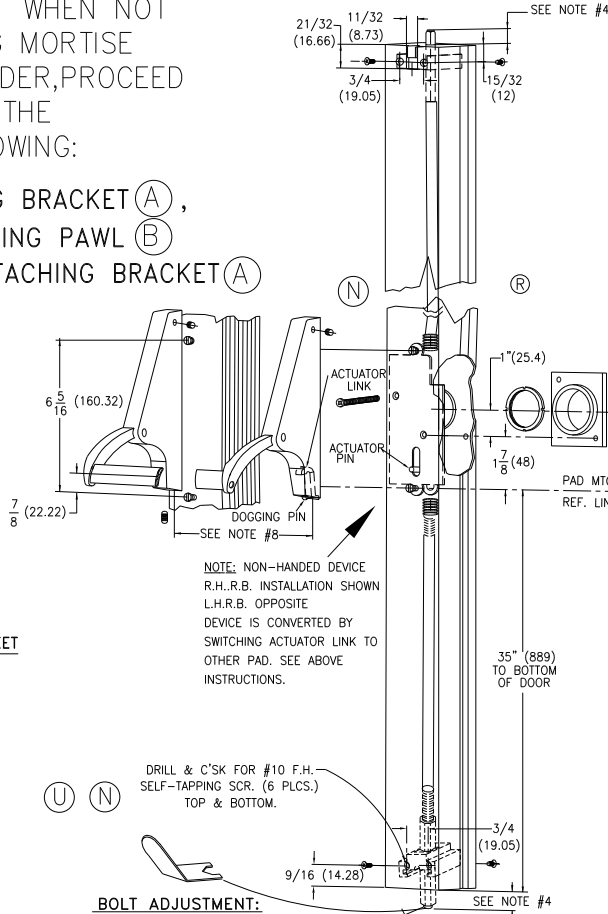
1" MORTISE WITH CAM PROFILE AS SHOWN BELOW.



RECOMMENDATIONS FOR MAINTENANCE:

IT IS RECOMMENDED THAT THE FOLLOWING ROUTINE MAINTENANCE CHECKS SHOULD BE TAKEN AT INTERVALS OF NOT MORE THAN ONE MONTH BY THE OCCUPIER OR HIS APPROVED REPRESENTATIVE:

- INSPECT AND OPERATE THE PANIC DEVICE TO ENSURE THAT ALL COMPONENTS ARE IN A SATISFACTORY WORKING CONDITION;
- ENSURE THAT THE KEEPER(S) IS (ARE) FREE FROM OBSTRUCTION.



NOTE: NON-HANDED DEVICE
 R.H./R.B. INSTALLATION SHOWN
 L.H./R.B. OPPOSITE
 DEVICE IS CONVERTED BY
 SWITCHING ACTUATOR LINK TO
 OTHER PAD. SEE ABOVE
 INSTRUCTIONS.

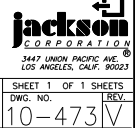
BOLT ADJUSTMENT:
 TO ADJUST TOP & BOTTOM BOLTS,
 ROTATE HEX. BOLT WITH
 WRENCH PROVIDED AS SHOWN.
 PATENT NO. 3,993,335
 FLAT "BOTTOM STRIKE" USED ON THRESHOLD ONLY.

HOLES & CUTOUTS CAN
 BE LOCATED PER
 DRILL TEMPLATES
 10-474 ACTIVE STILE
 10-475 INACTIVE STILE
 10-476 86 LOCK

V 10.01.05	ADD NOTE: WHEN NOT USING MORTISE CYLINDER:	ECN1863	RM
U 5.26.05	CLASSIFICATION NO. WAS 36501321A	ECN1841	RM
T 4.25.05	REMOVE RETURN PORTION SHOWN ON TOP STRIKE	ECN1834	RM
R 12.23.02	INCORPORATE 11/32" HOLE FOR LOCK PAD	ECN1644	RM
P 02/03/00	ADD HUMP TYPE STRIKE	ECN1339	RM
N 2/21/98	ADD MOUNT. INSTRUCTIONS FOR ENTRY		RM
M 10/4/97	REDRAWN, ELIMINATE TOP & BTM HOLE FOR ADJUSTMENT (BOLT GUIDE)	ECN1108	RM

DIMENSIONAL TOLERANCES UNLESS OTHERWISE SPECIFIED	APPROVALS	DATE
DECIMAL DIMENSIONS .XX ± .010	APPROVED	
ANGULAR DIMENSIONS .XXX ± .005	CHECKED	
ANGULAR ± 9' FRACTIONAL ± 1/64	DRAWN	RM 1/7/97

FILE NO.	MATERIAL	SCALE
NEXT ASSY. 1085-KITS	FINISH	NONE
QTY. USED 1	HEAT TREAT	



INSTALLATION GUIDE
 1085 & 1085x86
 PANIC DEVICES

SHEET 1 OF 1 SHEETS
 DWG. NO. 10-473V