



Optimize Sound Attenuation

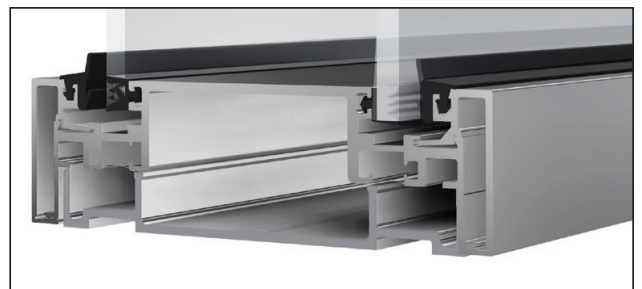
The 487-AR Series offers the highest STC rating of any of our interior partitions. Using two glass panes and a 5-11/16 inch system depth, it excels at mitigating sound so normal to loud speech cannot be perceived. To maximize privacy, look no further than the 487-AR Series Glass Partition.

Technical Details

- **System type:** Framed glass wall with low sound transmission
- **STC rating:** 47 for fixed laminated glazing, 39 for fixed monolithic glazing
- **System options:** 10 in bottom door rail (ADA compliant)
- **Frame dimensions:** 1-1/2 in width x 5-11/16 in depth
- **Max system height:** 8 ft
- **Max door height and width:** 8 ft x 3 ft (recommended)
- **Door options:** Pivot door, and hinged door
- **Finishes:** Clear anodized, black bronze anodized, and custom finishes available

487-AR STC Values

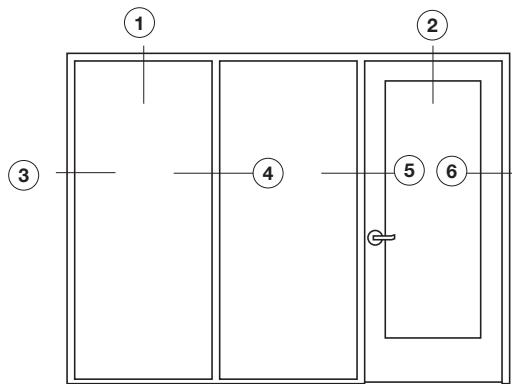
- 1/4 in monolithic + 1/4 in monolithic = STC 39
- 1/4 in monolithic + 1/4 in laminated = STC 46
- 1/4 in laminated + 3/8 in laminated = STC 47



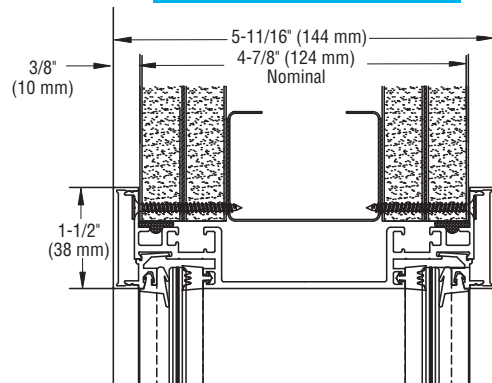
Double glazed frame for optimal acoustical privacy

CRL | 487-AR Series Office Partition Typical Details

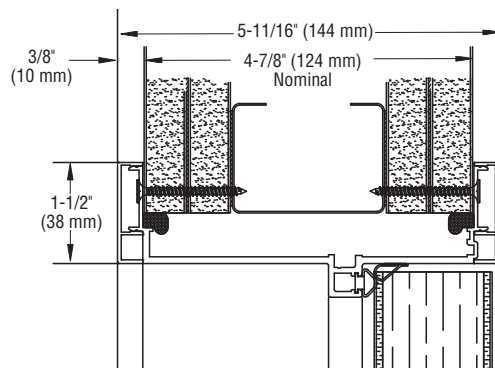
Typical Elevation



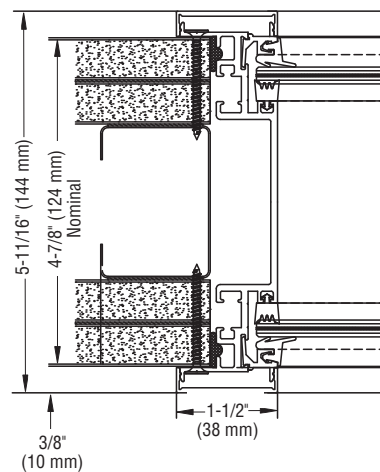
1. Fixed Glazing Header



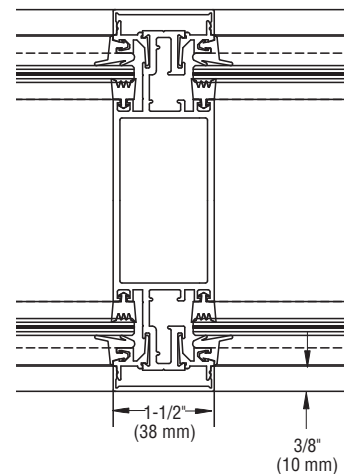
2. Door Header



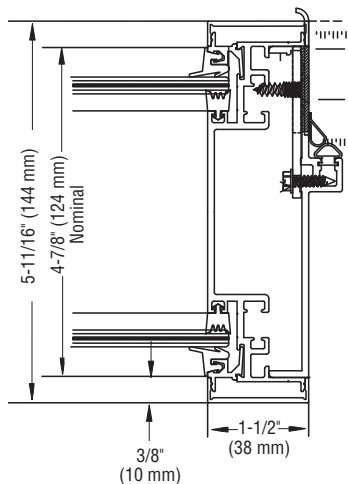
3. Wall Jamb



4. Intermediate Vertical



5. Strike Jamb with Sidelite



6. Hinge Jamb

