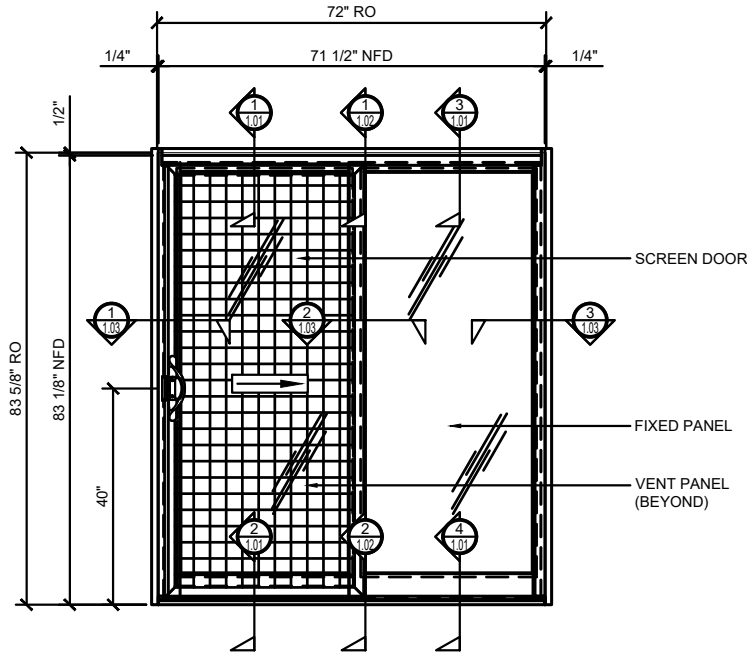




SERIES 3000 HIGH PERFORMANCE SLIDING DOORS
3060 SERIES SLIDING DOORS



CRL 3060 SERIES SLIDING DOOR ELEVATION - XO CONFIGURATION
FIN FRAME APPLICATION

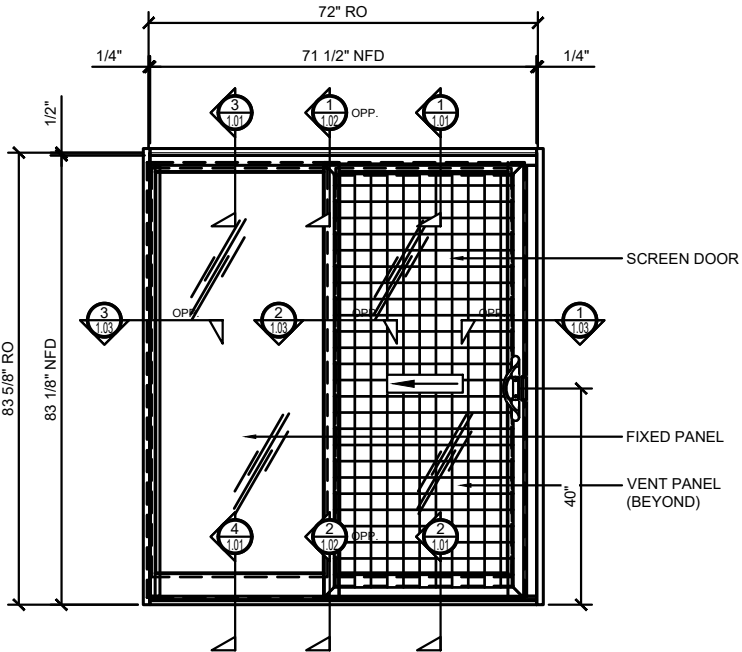
- TESTED TO AAMA CW60
- ACCOMMODATES 1" (25mm) AND 1 1/4" (32mm) GLAZING
- OPTIONAL THERMALLY BROKEN HEAD AND JAMB CHANNELS
- 4 1/2" (114mm) FRAME DEPTH
- OPTIONAL STACKING SUBSILL FOR HIGH PERFORMANCE
- 6063-T5/T6 ALUMINUM
- MULTI-POINT LOCKING SYSTEM
- AVAILABLE IN BLOCK OR FIN FRAME
- AVAILABLE IN OX AND XO CONFIGURATIONS

OUR SERIES 3060 HIGH PERFORMANCE SLIDING DOOR IS AN ELEGANT HIGH THERMAL TWO-TRACK SLIDING DOOR DESIGNED FOR EXTERNAL APPLICATIONS. THIS HIGH PERFORMANCE SLIDER IS DESIGNED FOR EITHER FIN OR BLOCK FRAME APPLICATIONS, HAS OPTIONAL THERMALLY BROKEN HEAD CHANNELS AND BOTTOM TRACKS TO PROVIDE EXCEPTIONAL THERMAL PERFORMANCE. IT'S RUGGED OVERALL CONSTRUCTION, COUPLED WITH HEAVY WALL STILES AND INTERLOCKS, CREATE A TRULY MONUMENTAL THERMAL SLIDING UNIT. DOORS ARE EQUIPPED WITH MULTI-POINT LOCKING SYSTEM, HEAVY-DUTY ADJUSTABLE TANDEM ROLLERS, AND FLOOR TRACK WITH STAINLESS STEEL TRACK TO ENSURE SMOOTH OPERATION DURING YEARS OF SERVICE.

VARIOUS COMBINATIONS OF SLIDING DOOR PANELS CAN ACCOMMODATE MANY DESIGN PLANS. THE UNIQUE DESIGN OF OUR 3060 SLIDING DOOR IS CAPABLE OF HAVING SEPARATE INTERIOR AND EXTERIOR FINISHES, OPTIONAL EXTRUDED SCREENS, AND FACTORY GLAZING. NFRC LABELING IS AVAILABLE FOR SHOP GLAZED. DUAL OR TRIPPLE GLAZED AVAILABLE.

STRUCTURAL DISCLAIMER:

ALL CUSTOMERS WHO IN ANY WAY UTILIZE THIS PRODUCT ARE SOLELY RESPONSIBLE TO CONSULT A STRUCTURAL ENGINEER TO DETERMINE THE SUITABILITY OF THE PRODUCT FOR THE INTENDED USE AND SITE CONDITIONS. ALL INSTALLERS MUST BE QUALIFIED AND HAVE PROFESSIONAL KNOWLEDGE ABOUT COMPLIANCE WITH LOCAL, STATE AND FEDERAL REGULATIONS, SAFETY FACTORS, AND THE APPROPRIATE CHOICE OF FIXING MATERIAL AND PROCEDURES.



CRL 3060 SERIES SLIDING DOOR ELEVATION - OX CONFIGURATION
FIN FRAME APPLICATION

| STANDARD ABBREVIATIONS | |
|------------------------|---------------------------|
| RO | ROUGH OPENING |
| NFD | NET FRAME DIMENSION |
| DLO | DAYLIGHT OPENING |
| DO | DOOR OPENING |
| DD | DOOR DIMENSION |
| NGD | NET GLASS DIMENSION |
| DP | DIMENSION POINT |
| NSDD | NET SCREEN DOOR DIMENSION |
| NFPD | NET FIXED PANEL DIMENSION |

Revisions By:

TGM 10/08/18



Description:

US ALUMINUM
3060 SERIES SLIDING DOORS

Drawn By: AAD

Date: 12/15/14

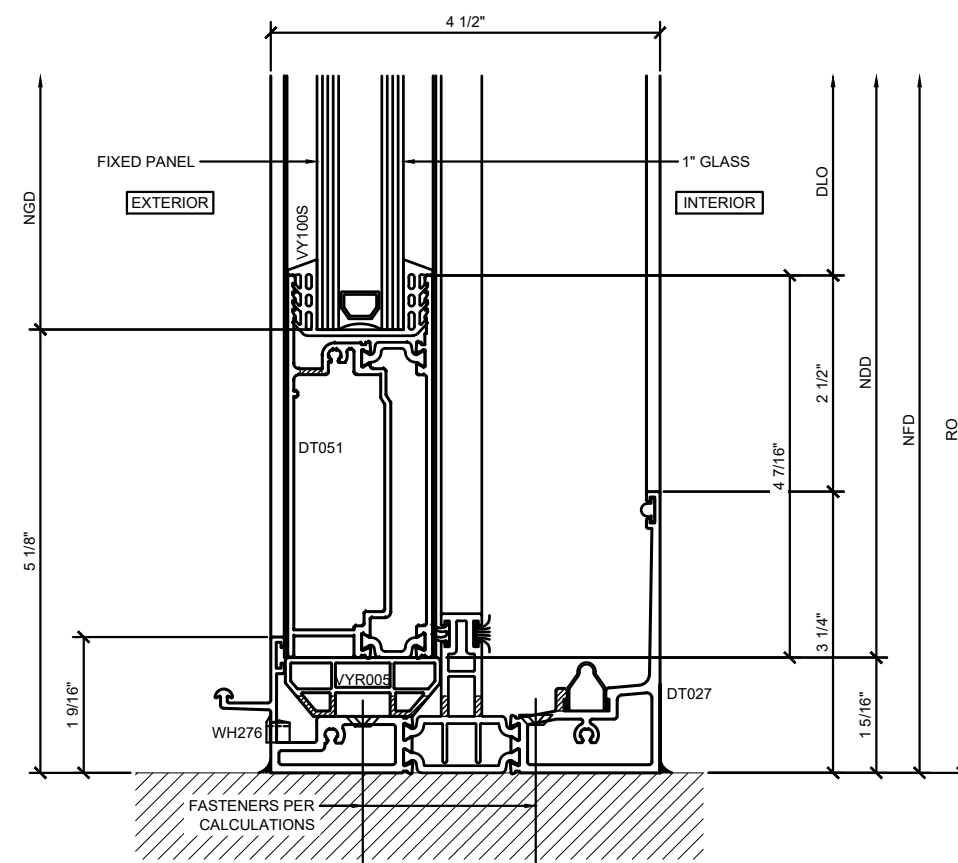
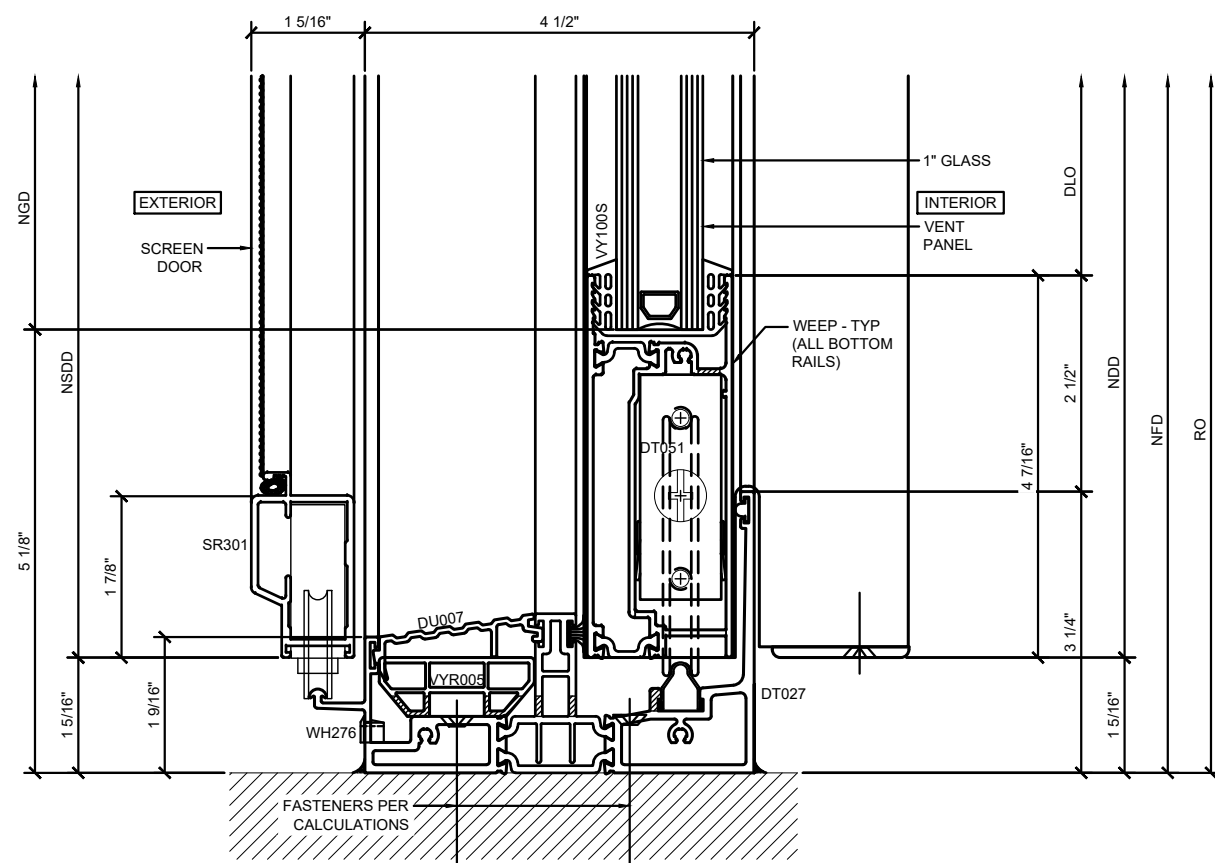
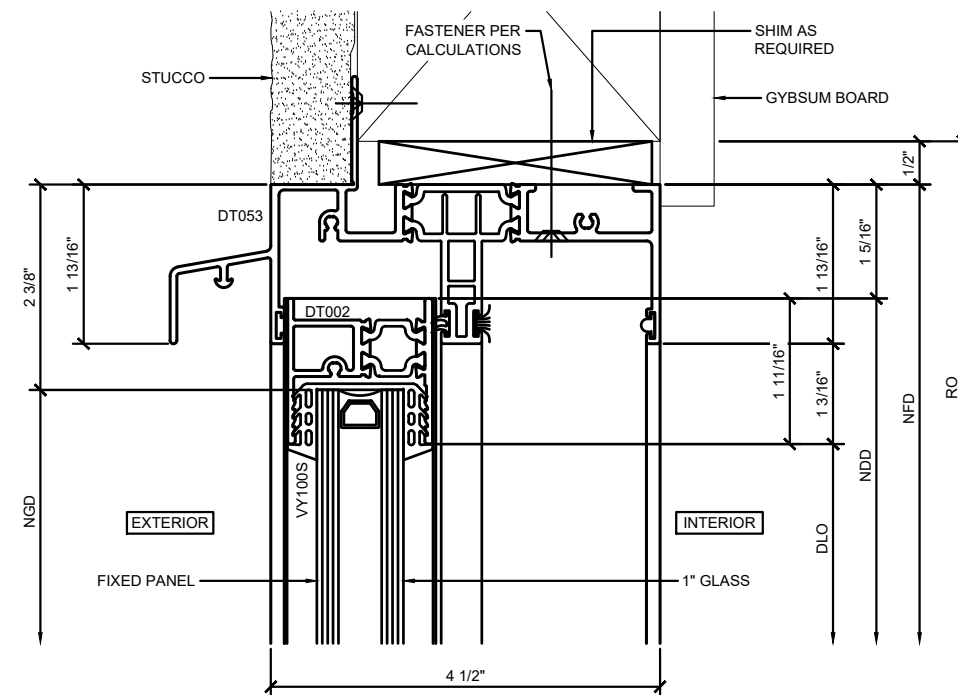
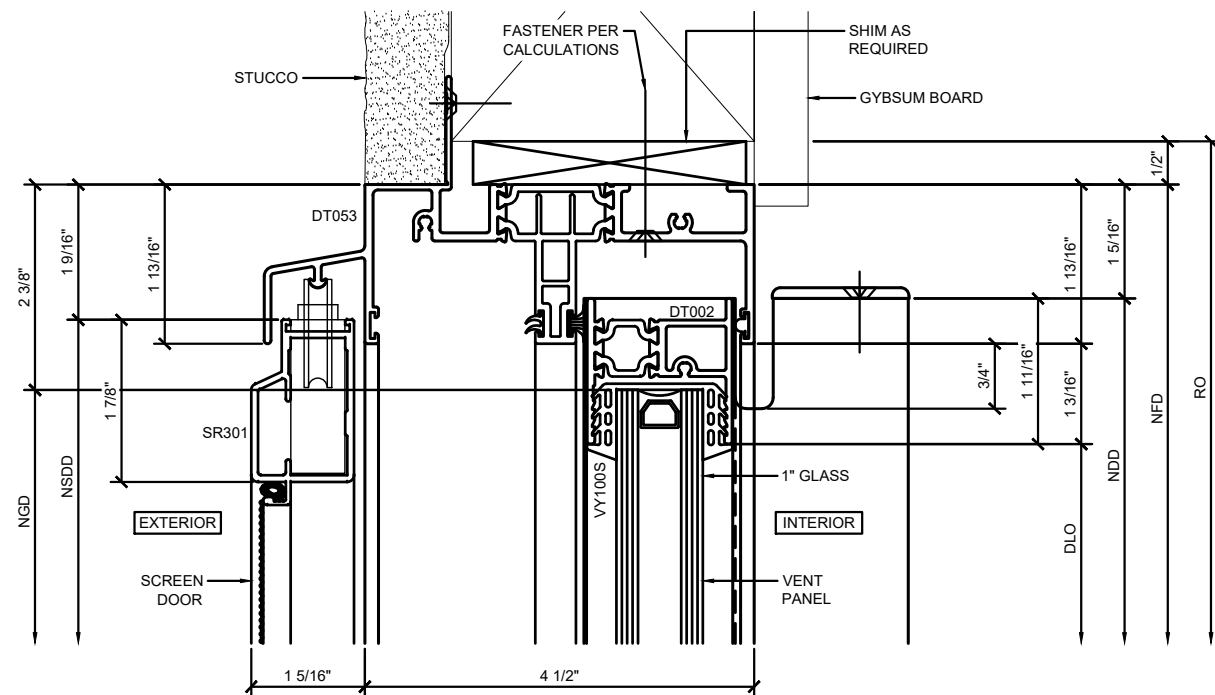
Scale: 3/4" = 1'-0"

File Name:

US Alum 3060 Series Sliding Doors.dwg

Sheet

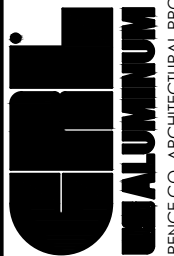
1



CRL US ALUMINUM 3060 SERIES SLIDING DOORS - XO AND OX DETAILS

Revisions By:

TGM 10/08/18



C.R.LAURENCE CO. ARCHITECTURAL PRODUCTS
2503 E. Vernon Avenue, Los Angeles, CA 90058-1897
PH (800)-421-6144 FX: 800-587-7501 www.crlaurence.com

Description:

US ALUMINUM

3060 SERIES SLIDING DOORS

Drawn By: AAD

Date: 12/15/14

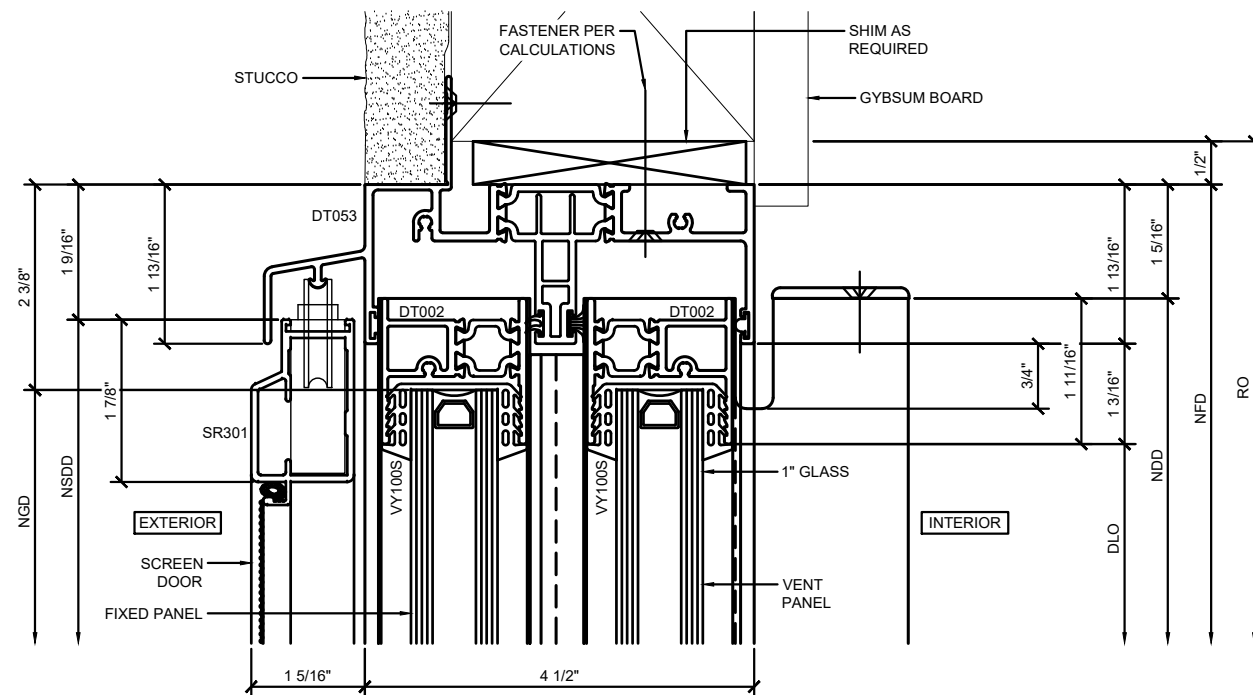
| | |
|--------|------|
| Scale: | FULL |
|--------|------|

File Name:

US Alum 3060 Series Sliding Doors.dwg

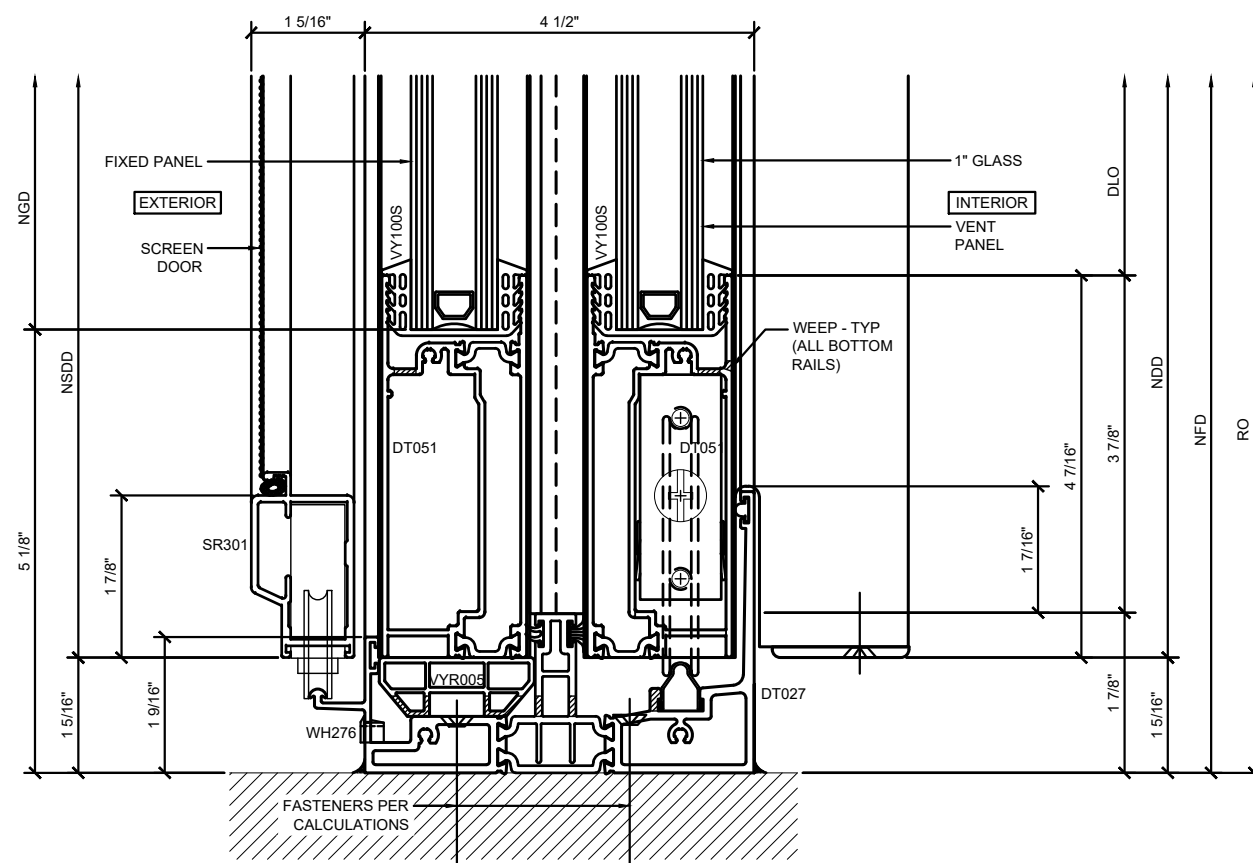
Sheet

1.01



① SCREEN DOOR / FIXED PANEL / VENT PANEL SECTION DETAIL AT HEAD

ARCH REF: N/A

$$1'-0''=1'-0''$$


② SCREEN DOOR / FIXED PANEL / VENT PANEL SECTION DETAIL AT SILL

ARCH REF: N/A

$$1'-0''=1'-0''$$

CRL US ALUMINUM 3060 SERIES SLIDING DOORS - XO AND OX DETAILS

Revisions By:

TGM 10/08/18

CEAL
ALUMINUM

C.R. LAURENCE CO. ARCHITECTURAL PRODUCTS
2000 W. 10TH AVE. SUITE 200
PH (800) 421-6144 FX 800-387-5251 www.clarence.com

Description:

US ALUMINUM

3060 SERIES SLIDING DOORS

Drawn By: AAD

Date: 12/15/14

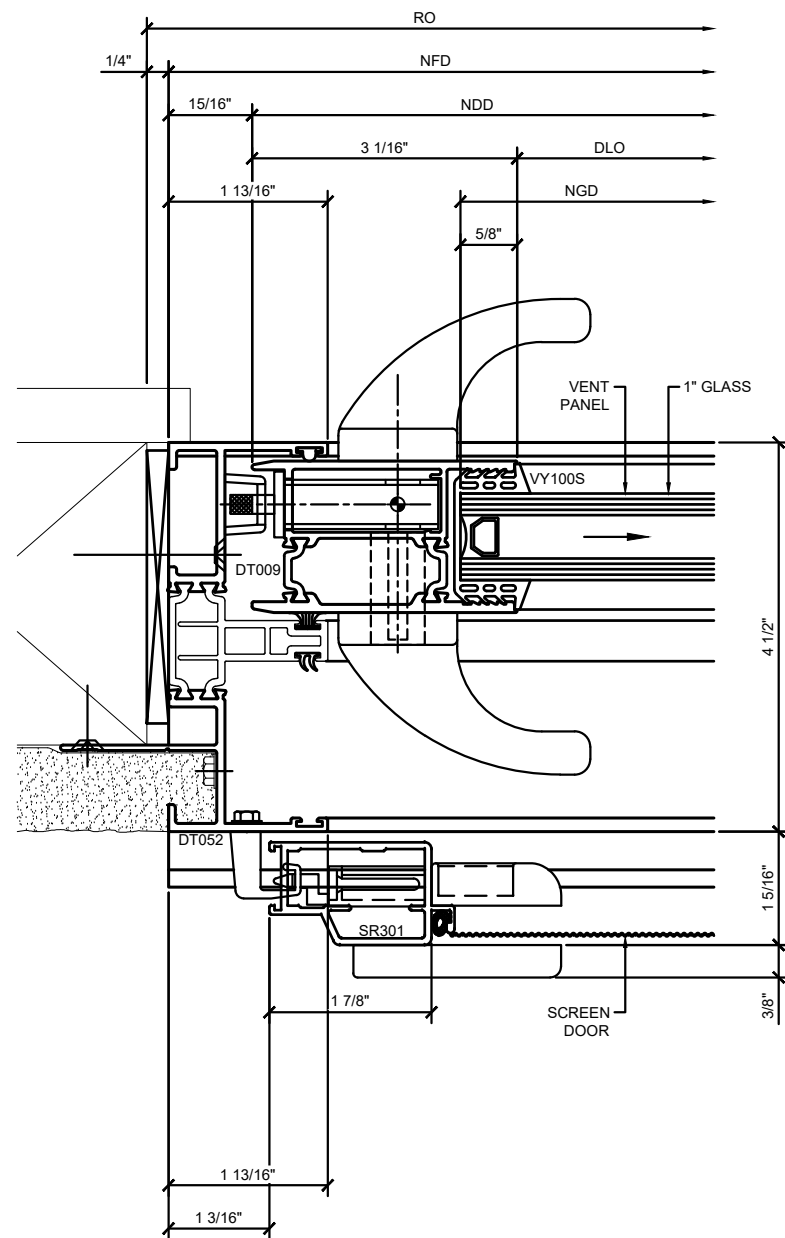
| | |
|--------|------|
| Scale: | FULL |
|--------|------|

File Name:

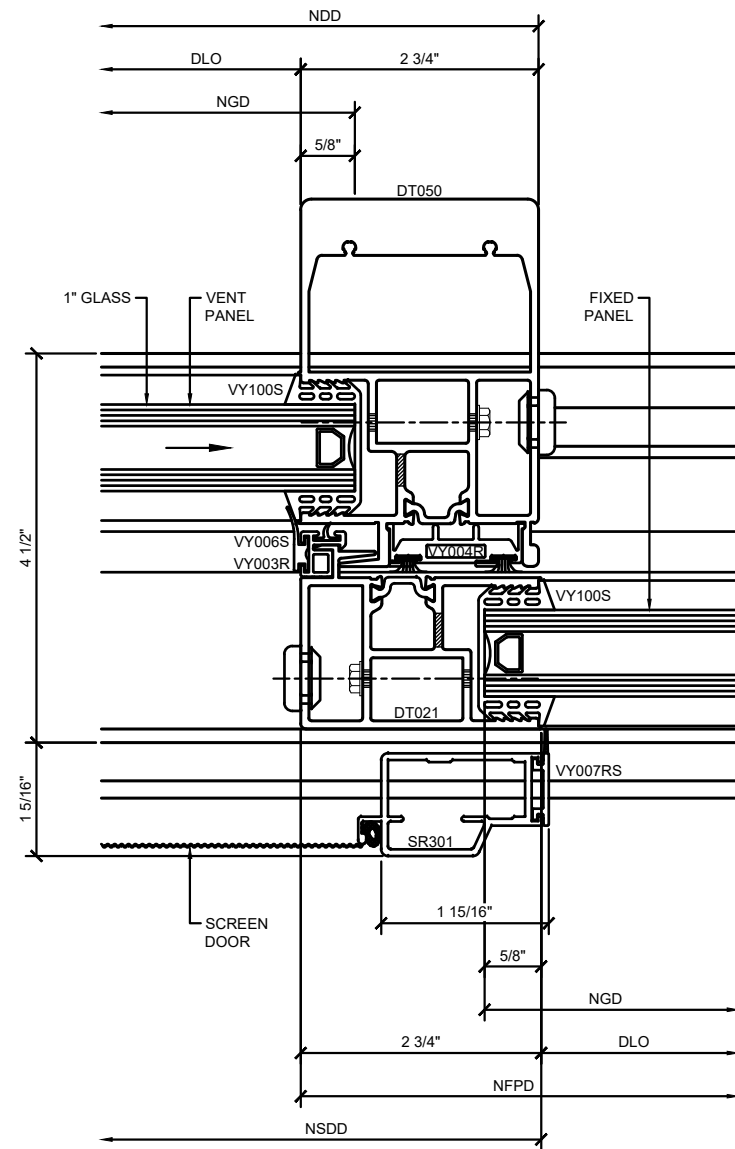
US Alum 3060 Series Sliding Doors.dwg

Sheet

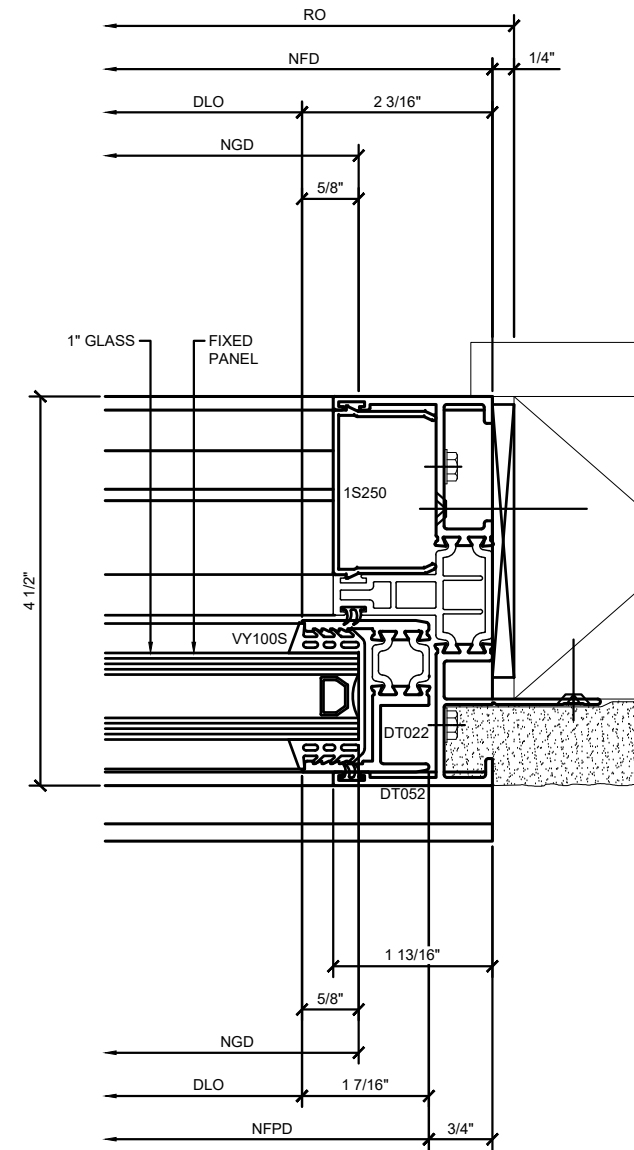
1.02



① SCREEN DOOR / VENT PANEL DETAIL AT JAMB
ARCH REF: N/A 1'-0"=1'-0"



② SCREEN DOOR / VENT PANEL / FIXED PANEL
DETAIL AT MEETING STILES
ARCH REF: N/A 1'-0"=1'-0"



③ FIXED PANEL DETAIL AT JAMB
ARCH REF: N/A 1'-0"=1'-0"

| | |
|---|----------|
| Revisions By: | |
| TGM | 10/08/18 |
| | |
| | |
| | |
|  | |
| C.R. LAURENCE CO. ARCHITECTURAL PRODUCTS 2503 E. Vernon Avenue, Los Angeles, CA 90058-1897 PH: (800) 421-6144 FX: (800) 587-7501 www.crlaurence.com | |
| Description: | |
| US ALUMINUM | |
| 3060 SERIES SLIDING DOORS | |
| Drawn By: AAD Date: 12/15/14 Scale: FULL File Name: US Alum 3060 Series Sliding Doors.dwg | |
| Sheet | |
| 1.03 | |