



**C.R. LAURENCE CO., INC.**  
**PROFESSIONAL QUALITY**

## Important Information:

The CPL205 Door Patch Lock is designed for European profile cylinder applications. The Patch Lock is designed for corner application at the top and/or bottom of the door and jamb mounting. Matches the CPF Patches in size and appearance. Cylinder sets are "bottom load" - access is required underneath the door to adjust or change cylinder set.

## Specifications:

**Glass Sizes:** 3/8" (10 mm) to 1/2" (12 mm) thick tempered safety glass

**Construction:** - High density casting - High density casting lock

**Glass Fabrication Required:** Cut-Out and Hole Required - See Reverse

**Includes:** Gaskets, Screws, Template, Keyed Cylinder, and 3 Keys

**Available Finishes:**

- Brushed Stainless Steel
- Polished Stainless Steel

## Use of Gaskets:

**For 3/8" (10 mm) Glass:** Use two gaskets on each side

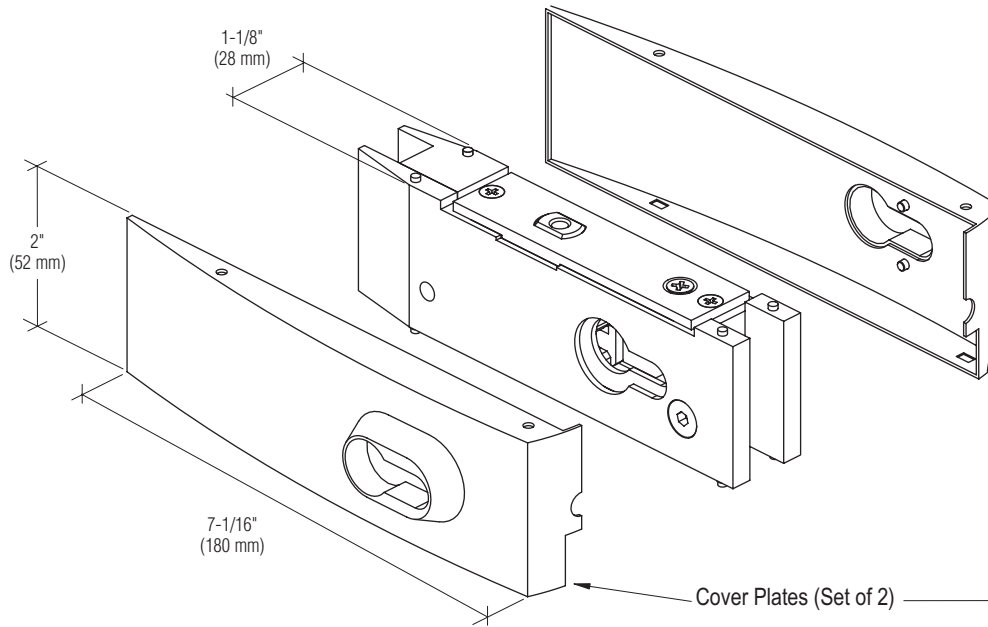
**For 1/2" (12 mm) Glass:** Use one gasket on each side

## Recommendations:

For public safety, we recommend the use of tempered safety glass only.

## SEE TEMPLATE ON BACK

Refer to Dimensions Shown to Ensure Accuracy



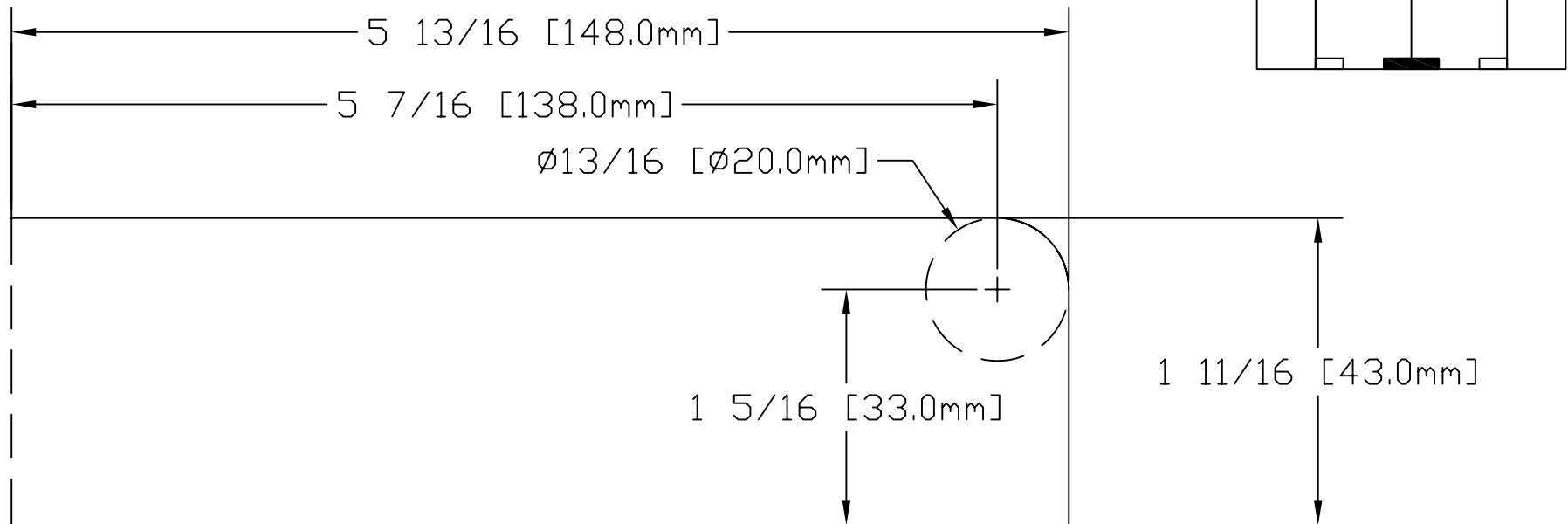
## CRL CURVED FACE PLATE BOTTOM PATCH LOCK

FOR CORNER APPLICATIONS

**Cat. No. CPL205**



**C.R. LAURENCE CO., INC.**  
**PROFESSIONAL QUALITY**

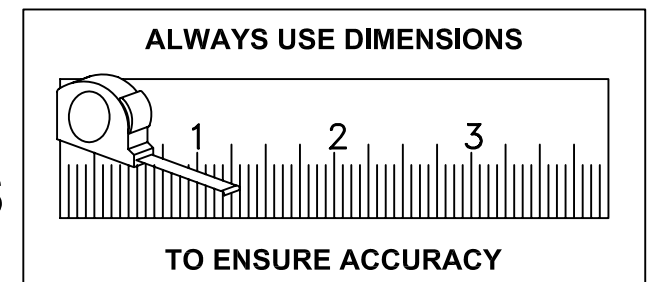


## **CRL CURVED FACE PLATE BOTTOM PATCH LOCK**

**DOOR CORNER LOCK WITH KEYED CYLINDER AND 3 KEYS**

**Cat No. CPL205**

**C.R. Laurence Corporate Headquarters:** P.O. Box 58923 Los Angeles, CA 90058-0923; Toll Free Phone (800) 421-6144, Technical Assistance/Extension 7700; Toll Free Fax (800) 587-7501



**DO NOT SCALE**