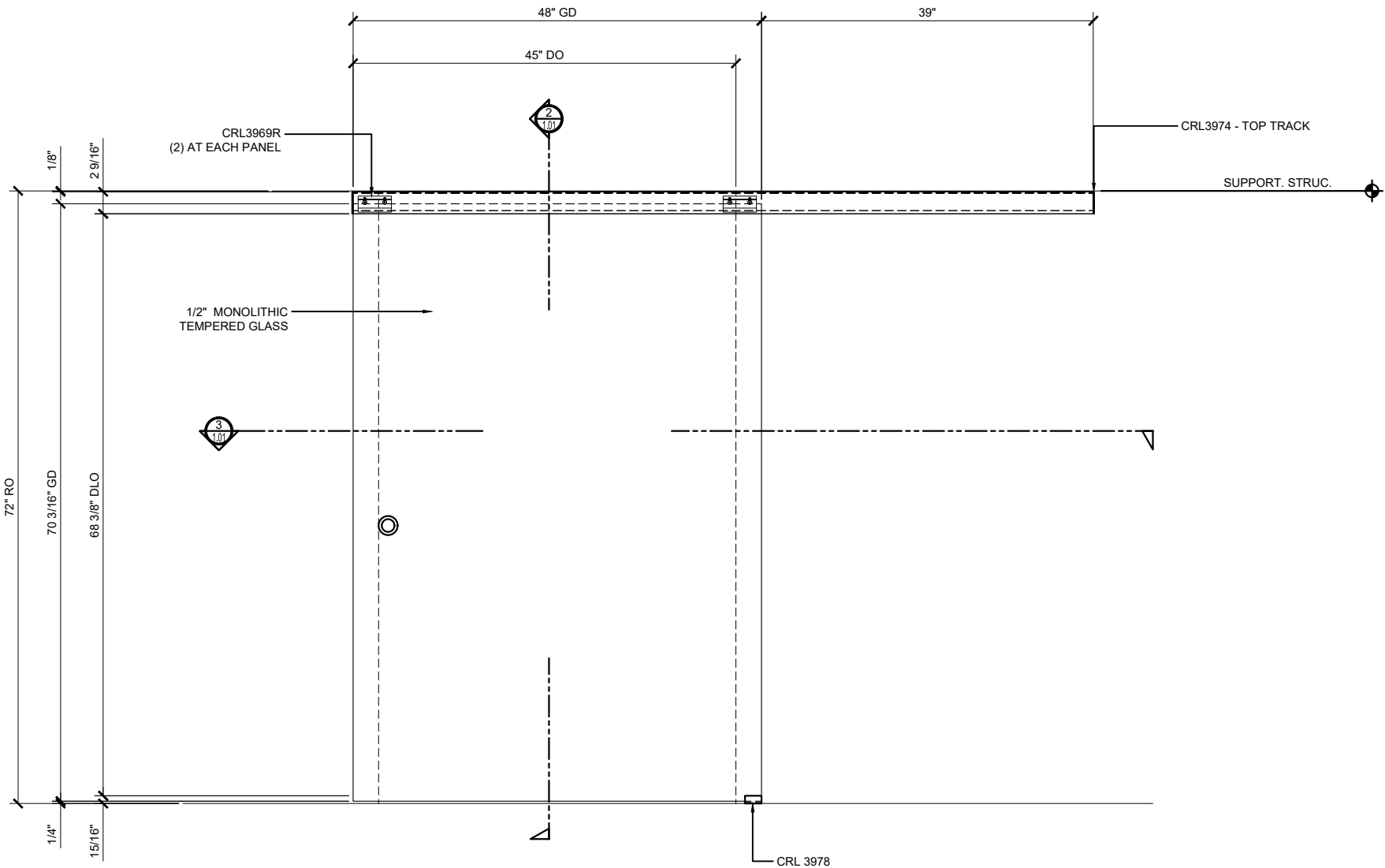
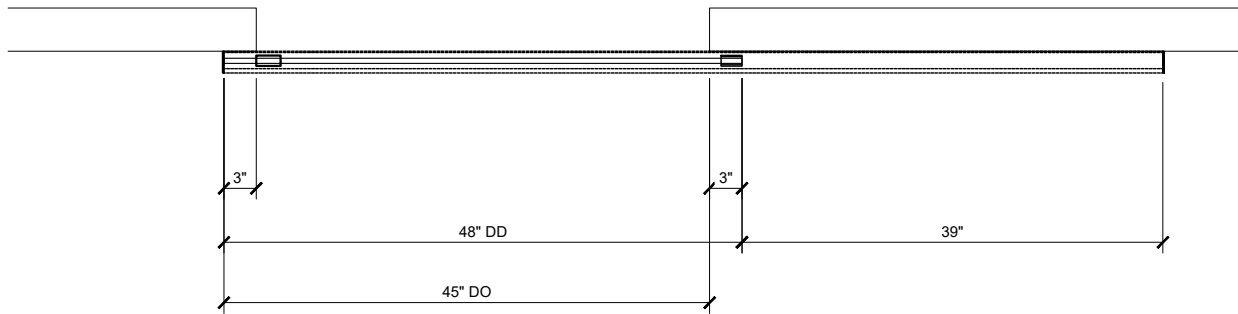


CRL 280/285 SERIES TOP HUNG SLIDING DOOR CRL2812 AND CRL28512 SYSTEM CEILING MOUNT



① CRL2812 AND CRL 28512 - ELEVATION

1 1/2"=1'-0"

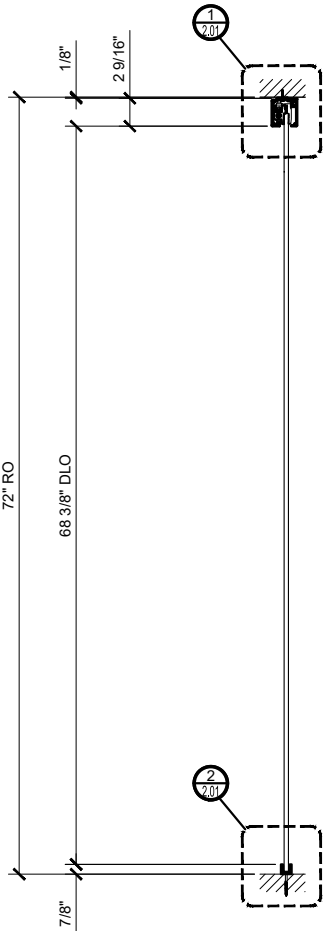


③ CRL2812 AND CRL 28512 - PLAN

1 1/2"=1'-0"

- \* FOR 3/8" TO 1/2" (10 TO 12 MM) TEMPERED GLASS
- \* MOUNT TO STRUCTURAL CEILING AND WALL
- \* AVAILABLE WITH OR WITHOUT "SOFTBRAKE" BRAKING SYSTEM
- \* RATED FOR DOORS WEIGHING UP TO 176 POUNDS (80 KG)
- \* NO NOTCHES OR HOLES REQUIRED IN THE GLASS FOR INSTALLATION
- \* SATIN ANODIZED AND BRUSHED STAINLESS ANODIZED FINISHES AVAILABLE

NOTE: FOR A DETAILED LISTING OF THE COMPONENTS OF EACH KIT GO TO [crlaurence.com/sliding-glass-doors](http://crlaurence.com/sliding-glass-doors)



② SLIDER SECTION

1 1/2"=1'-0"

STRUCTURAL DISCLAIMER:

ALL CUSTOMERS WHO IN ANY WAY UTILIZE THIS PRODUCT ARE SOLELY RESPONSIBLE TO CONSULT A STRUCTURAL ENGINEER TO DETERMINE THE SUITABILITY OF THE PRODUCT FOR THE INTENDED USE AND SITE CONDITIONS. ALL INSTALLERS MUST BE QUALIFIED AND HAVE PROFESSIONAL KNOWLEDGE ABOUT COMPLIANCE WITH LOCAL, STATE AND FEDERAL REGULATIONS, SAFETY FACTORS, AND THE APPROPRIATE CHOICE OF FIXING MATERIAL AND PROCEDURES.

STANDARD ABBREVIATIONS

RO	ROUGH OPENING
FD	FRAME DIMENSION
DLO	DAYLIGHT OPENING
DO	DOOR OPENING
DD	DOOR DIMENSION
GD	GLASS DIMENSION
DP	DIMENSION POINT

Revisions By:

CRL

2503 E. Vernon Avenue, Los Angeles, CA 90058-1897  
PH (800)-451-6144 FX 800-887-7501 www.crlaurence.com

Description:  
CRL280/285 SERIES  
TOP HUNG SINGLE TRACK  
CEILING MOUNT SLIDING DOOR  
FOR 3/8" AND 1/2" GLASS

Drawn By: JGM

Date: 04/24/19

Scale: AS NOTED

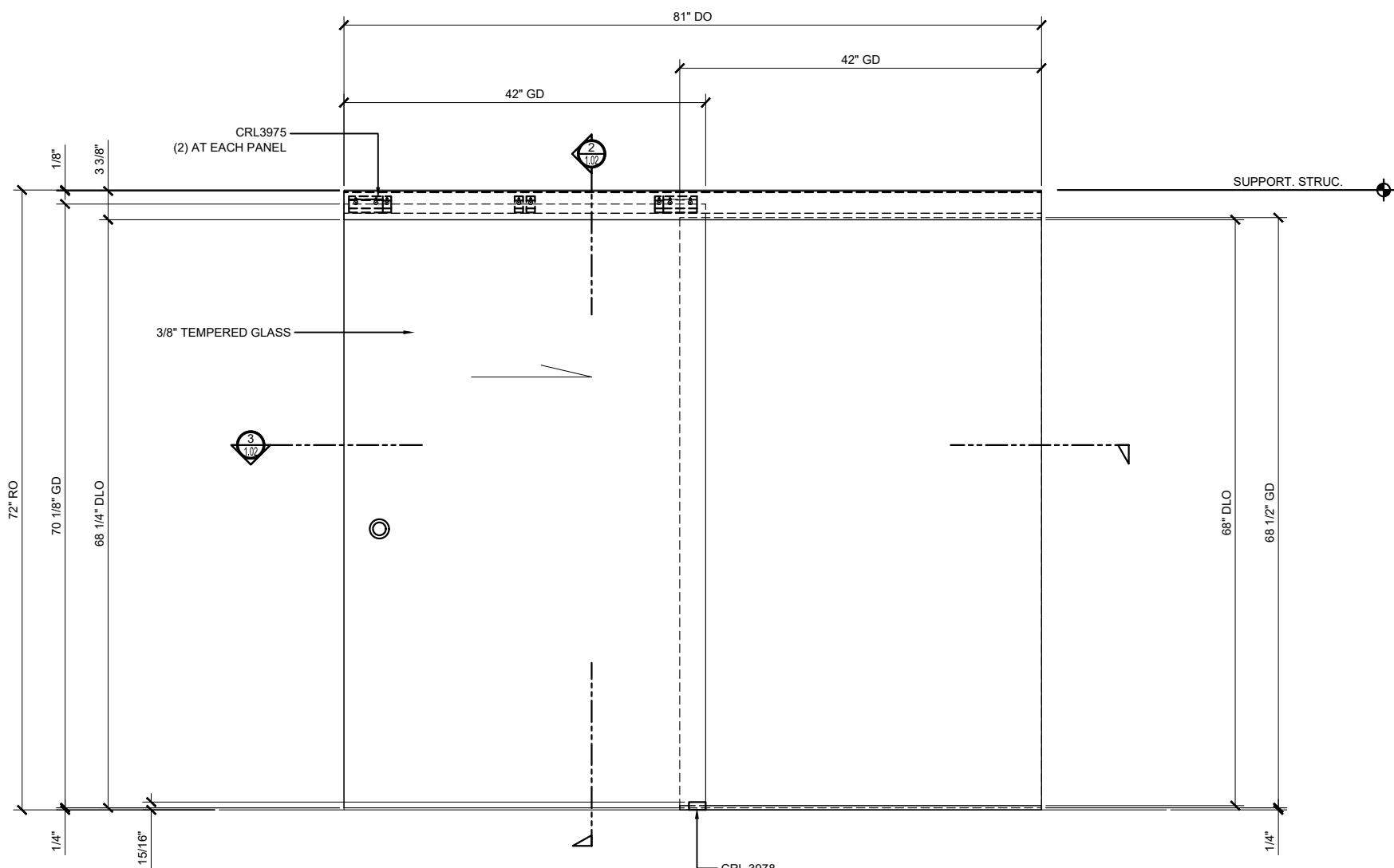
File Name:

CRL280\_Top\_Hung\_Slid\_Doors.dwg

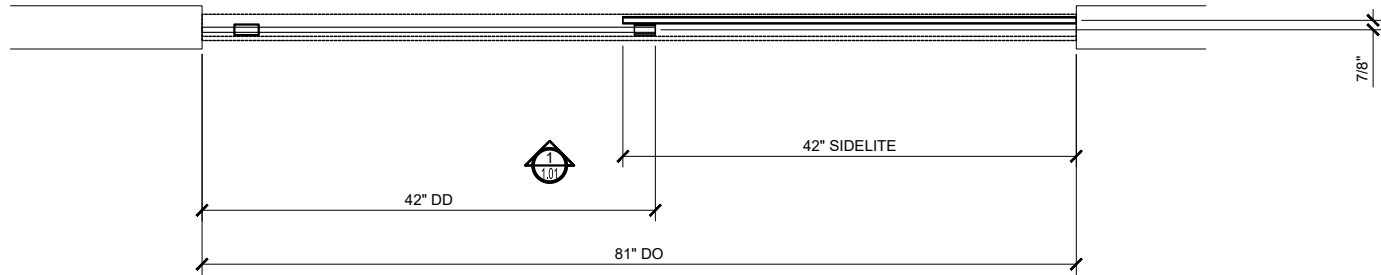
Sheet

1.01

CRL 280/285 SERIES TOP HUNG SLIDING DOOR CRL2812F AND CRL28512F SYSTEM CEILING MOUNT



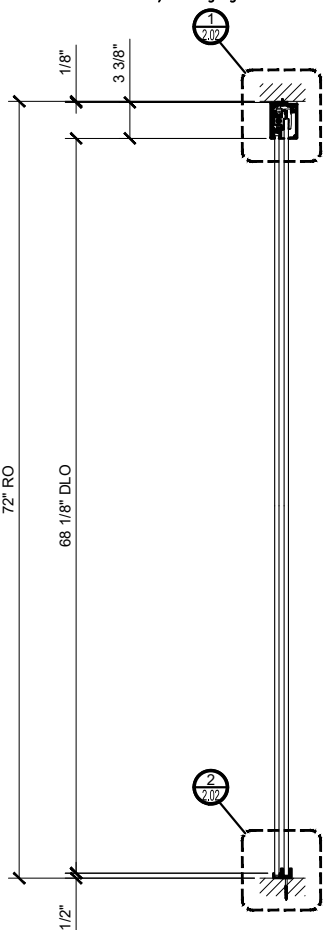
① CRL2812F AND CRL 28512F - ELEVATION  
1 1/2"=1'-0"



③ CRL2812F AND CRL 28512F - PLAN  
1 1/2"=1'-0"

- \* FOR 3/8" TO 1/2" (10 TO 12 MM) TEMPERED GLASS
- \* MOUNT TO STRUCTURAL CEILING AND WALL
- \* AVAILABLE WITH OR WITHOUT "SOFTBRAKE" BRAKING SYSTEM
- \* RATED FOR DOORS WEIGHING UP TO 176 POUNDS (80 KG)
- \* NO NOTCHES OR HOLES REQUIRED IN THE GLASS FOR INSTALLATION
- \* SATIN ANODIZED AND BRUSHED STAINLESS ANODIZED FINISHES AVAILABLE

NOTE: FOR A DETAILED LISTING OF THE COMPONENTS OF EACH KIT GO TO [crlaurence.com/sliding-glass-doors](http://crlaurence.com/sliding-glass-doors)



② SLIDER SECTION  
1 1/2"=1'-0"

STANDARD ABBREVIATIONS	
RO	ROUGH OPENING
FD	FRAME DIMENSION
DLO	DAYLIGHT OPENING
DO	DOOR OPENING
DD	DOOR DIMENSION
GD	GLASS DIMENSION
DP	DIMENSION POINT

Revisions By:

CRL

2503 E. Vernon Avenue, Los Angeles, CA 90058-1897  
PH (800)-451-1414 FX 800-887-7501 www.crlaurence.com

Description:  
CRL280/285 SERIES  
TOP HUNG SINGLE TRACK  
CEILING MOUNT SLIDING DOOR  
FOR 3/8" AND 1/2" GLASS

Drawn By: JGM

Date: 04/24/19

Scale: AS NOTED

File Name:

CRL280\_Top\_Hung\_Slid\_Doors.dwg

Sheet

Technical drawing of a window assembly showing dimensions and components. The drawing includes a cross-section of the window frame and glass assembly.

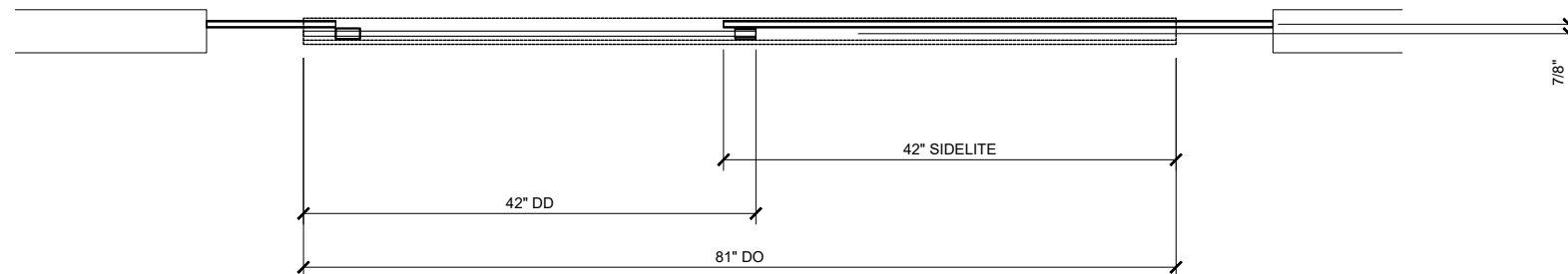
**Dimensions:**

- Overall width: 99" RO
- Overall height: 83 1/2" RO
- Top horizontal dimensions: 12" GD, 36" GD, 51" GD, 42" GD
- Left vertical dimensions: 1/8", 11 1/2", 33/8", 70 1/8" GD, 68 1/4" DLO, 15/16"
- Right vertical dimensions: 68" DLO, 83 3/8" GD, 1/4", 1/2"

**Components and Labels:**

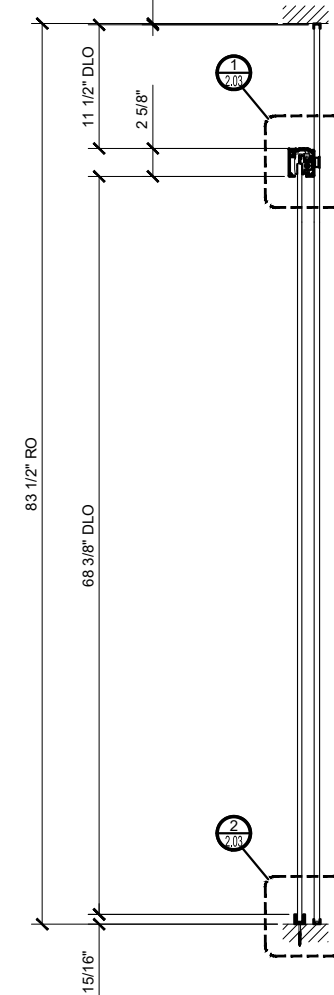
- CRL3975 (2) AT EACH PANEL
- 3/8" TEMPERED GLASS
- 2 (Top center marker)
- 3 (Left center marker)
- CRL 3073 (Bottom center marker)

The drawing shows a cross-section of a window assembly with a 3/8" tempered glass panel. The assembly is supported by a frame with various dimensions and components labeled. The top and bottom of the frame are marked with 1/4" and 1/2" dimensions. The left side of the frame is marked with 1/8", 11 1/2", 33/8", 70 1/8" GD, 68 1/4" DLO, and 15/16". The right side of the frame is marked with 68" DLO, 83 3/8" GD, 1/4", and 1/2". The top of the frame is marked with 12" GD, 36" GD, 51" GD, and 42" GD. The bottom of the frame is marked with 99" RO. The assembly includes two CRL3975 components at each panel and a CRL 3073 component at the bottom center. The glass panel is labeled 3/8" TEMPERED GLASS. There are also two circular markers labeled 2 and 3.

$$1\frac{1}{2}'' = 1' - 0''$$


1 1/2"=1'-0"

- NOTE: FOR A DETAILED LISTING OF THE COMPONENTS OF EACH KIT GO TO [crlaurence.com/sliding-glass-doors](http://crlaurence.com/sliding-glass-doors)



1 1/2"=1'-0"

STANDARD ABBREVIATIONS	
RO	ROUGH OPENING
FD	FRAME DIMENSION
DLO	DAYLIGHT OPENING
DO	DOOR OPENING
DD	DOOR DIMENSION
GD	GLASS DIMENSION
DP	DIMENSION POINT

Description:

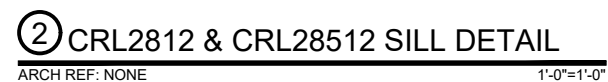
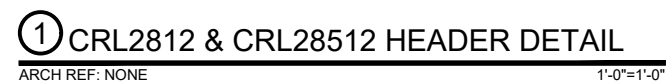
**Description:**  
CRL280/285 SERIES  
TOP HUNG SINGLE TRACK  
CEILING MOUNT SLIDING DOOR  
FOR 3/8" AND 1 1/2" GLASS

File Name:
CRL280_Top_Hung_Slid_Doors.dwg
Sheet



2503 E. Vernon Avenue, Los Angeles, CA 90058-1897  
PH (800)-421-6144 FX: 800-587-7501 [www.crlaurence.com](http://www.crlaurence.com)

1.03



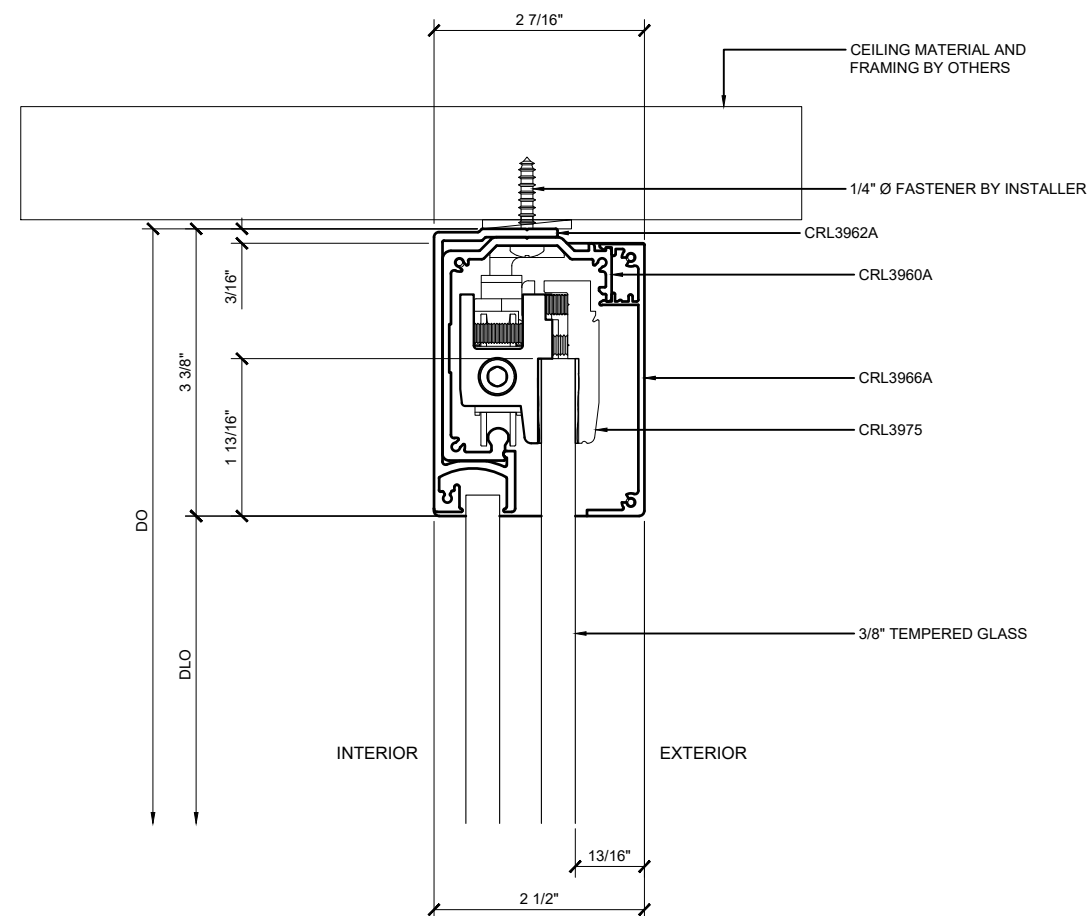
## CRL280/285 SERIES CEILING MOUNT SLIDING DOOR CRL2812 AND CRL28512 DETAILS

2503 E. Vernon Avenue, Los Angeles, C.A 90058-1897

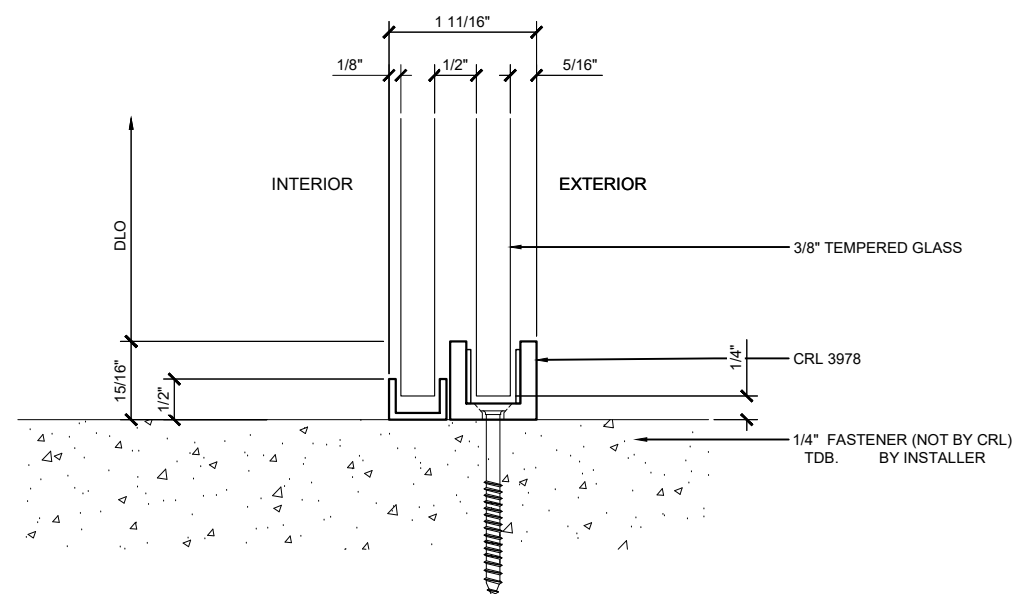
<p><u>Description:</u></p> <p>CRL280/285 SERIES TOP HUNG SINGLE TRACK CEILING MOUNT SLIDING DOOR FOR 3/8" AND 1/2" GLASS</p>
--

CRL280\_Top\_Hung\_Slid\_Doors.dwg

Sheet



**① CRL2812F & CRL28512F HEADER DETAIL**  
ARCH REF: NONE 1'-0"=1'-0"



**② CRL2812 & CRL28512 SILL DETAIL**  
ARCH REF: NONE 1'-0"=1'-0"

## CRL280/285 SERIES CEILING MOUNT SLIDING DOOR CRL2812F AND CRL28512F DETAILS

Revisions By:

**CRL**

2503 E. Vernon Avenue, Los Angeles, CA 90058-1897  
PH (800) 421-1514 FX 800-587-7501 www.crlaurence.com

Description:

CRL280/285 SERIES  
TOP HUNG SINGLE TRACK  
CEILING MOUNT SLIDING DOOR  
FOR 3/8" AND 1/2" GLASS

Drawn By: JGM

Date: 04/24/19

Scale: AS NOTED

File Name:

CRL280\_Top\_Hung\_Slid\_Doors.dwg  
Sheet

2.02