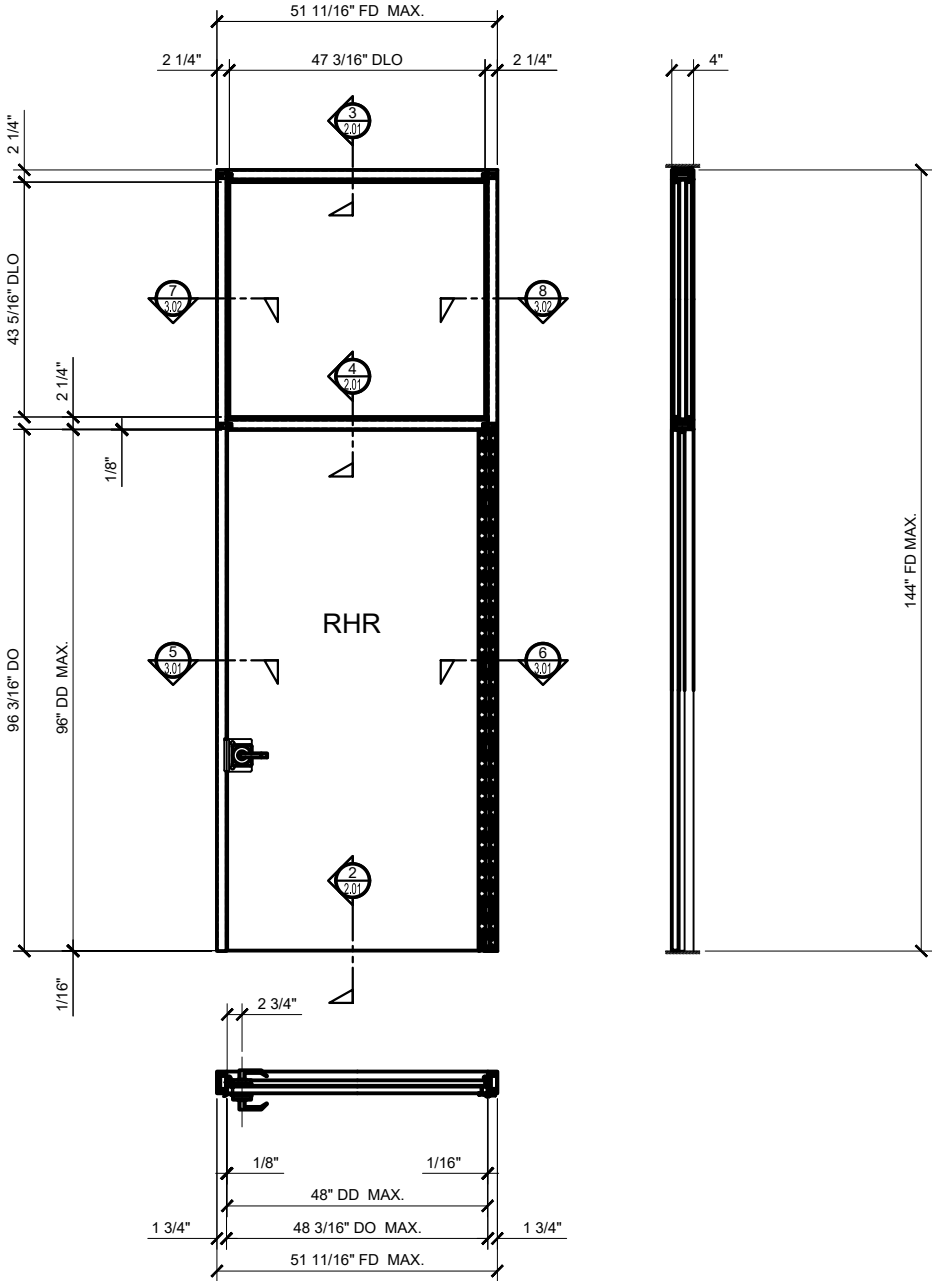
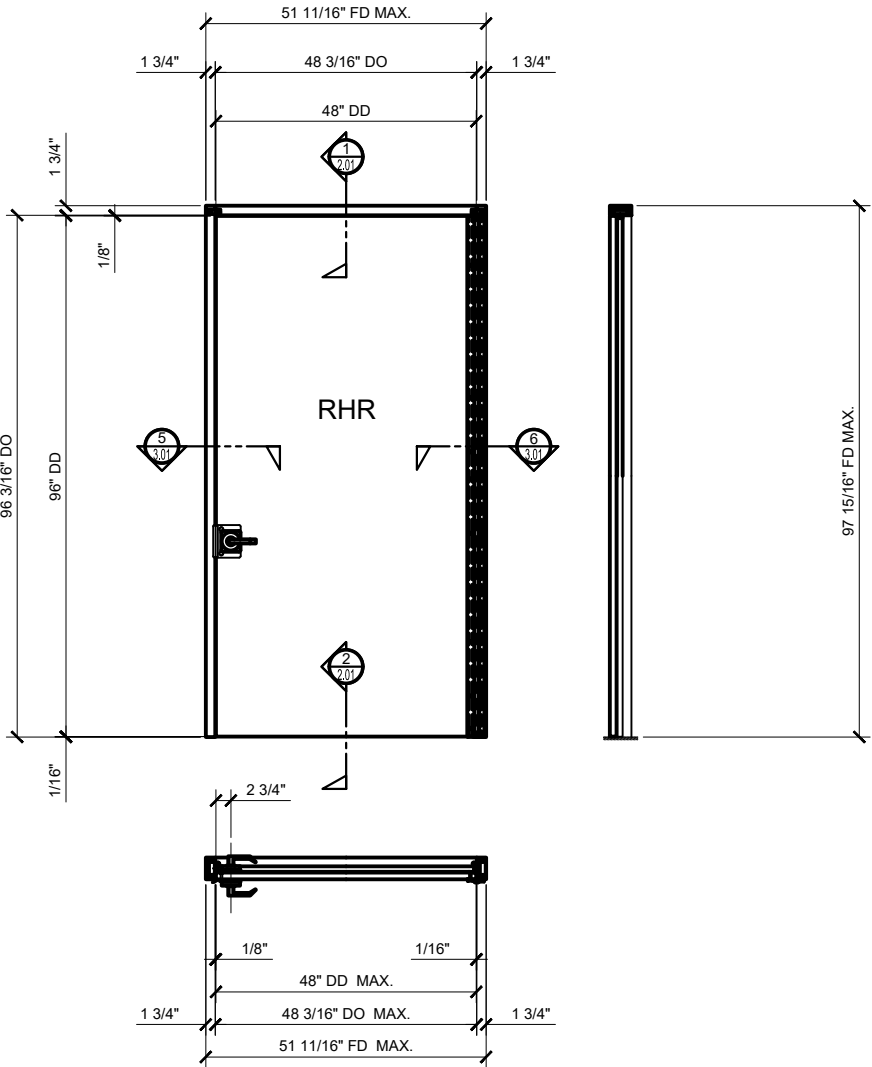


CRL FULL VISION BULLET RESISTANT DOORS AND FRAMES



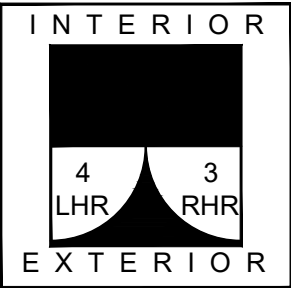
① EXTERIOR ELEVATION  
ARCH REF: NONE  
3/4"=1'-0"



② EXTERIOR ELEVATION  
ARCH REF: NONE  
3/4"=1'-0"

STANDARD ABBREVIATIONS	
RO	ROUGH OPENING
FD	FRAME DIMENSION
DLO	DAYLIGHT OPENING
DO	DOOR OPENING
DD	DOOR DIMENSION
TD	TRANSOM DIMENSION
DP	DIMENSION POINT

DOOR SWING CHART



- \* AVAILABLE IN  
FVRD1 – ALUMINUM LEVEL 1 BULLET RESISTANT FULL VISION  
DOOR &  
FVRD3 – ALUMINUM LEVEL 3 BULLET RESISTANT FULL VISION  
DOOR
- \* CONTINUOUS GEARED HINGE
- \* LEVEL 1 & LEVEL 3 GLAZING PROTECTION AVAILABLE  
\* LEVEL 1 GLAZING:  
1-1/4" B.R. ACRYLIC NO SAR COAT  
1-1/4" B.R. ACRYLIC WITH SAR COAT
- \* LEVEL 3 GLAZING:  
1-1/4" B.R. LEXGARD
- \* MATERIALS: FRAME 1-3/4" X 4"
- \* FINISHES: FRAME – SATIN ANODIZED, BRONZE  
ANODIZED, OR PAINTED, POWDER OR KYNAR
- CRL BULLET RESISTANT FULL VISION DOORS ARE ENGINEERED  
AND SUCCESSFULLY TESTED TO WITHSTAND LEVEL 1 OR 3  
HANDGUN PROJECTILES AS DEFINED BY UL752 BALLISTIC  
STANDARDS.  
ALUMINUM FRAME OFFERS LEVEL 3 PROTECTION. MADE IN THE  
U.S.A.  
INSTALLATION SCREWS BY CUSTOMER.

Revisions By:

CRL

2503 E. Vernon Avenue, Los Angeles, CA 90059-1897  
PH (800)-421-5144 FX: 600-587-7501 www.crlaurence.com

Description:  
BULLET RESISTANT SERIES  
FULL VISION BULLET  
RESISTANT DOORS

CRL

Drawn By: G

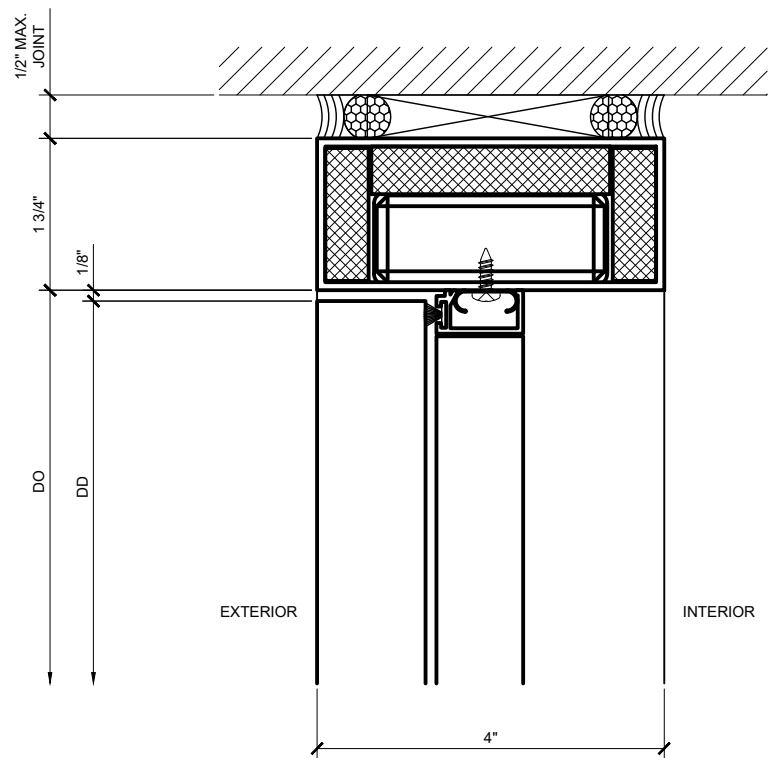
Date: 01/26/18

Scale: AS NOTED

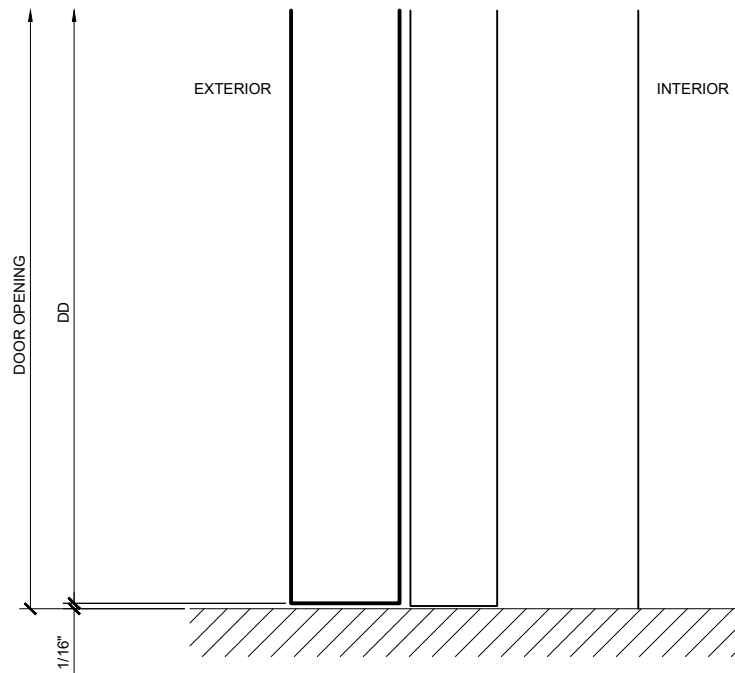
File Name:

FullVisionBulletResistantDoor.com

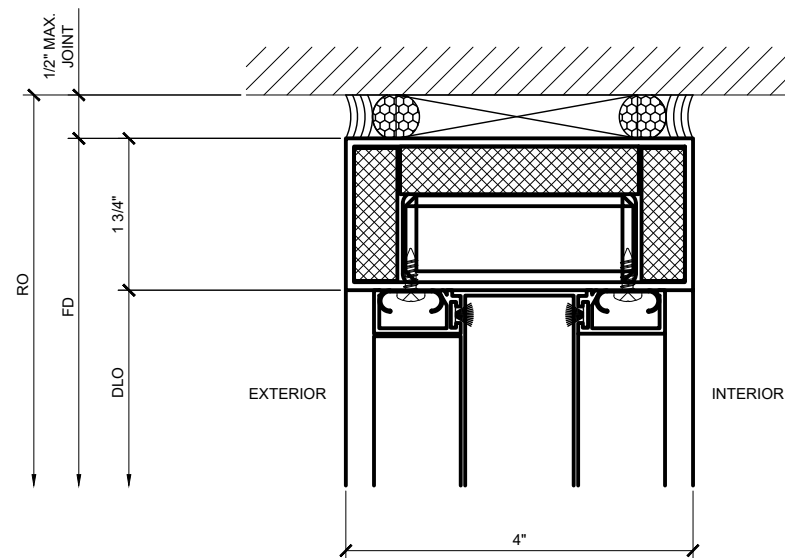
Sheet



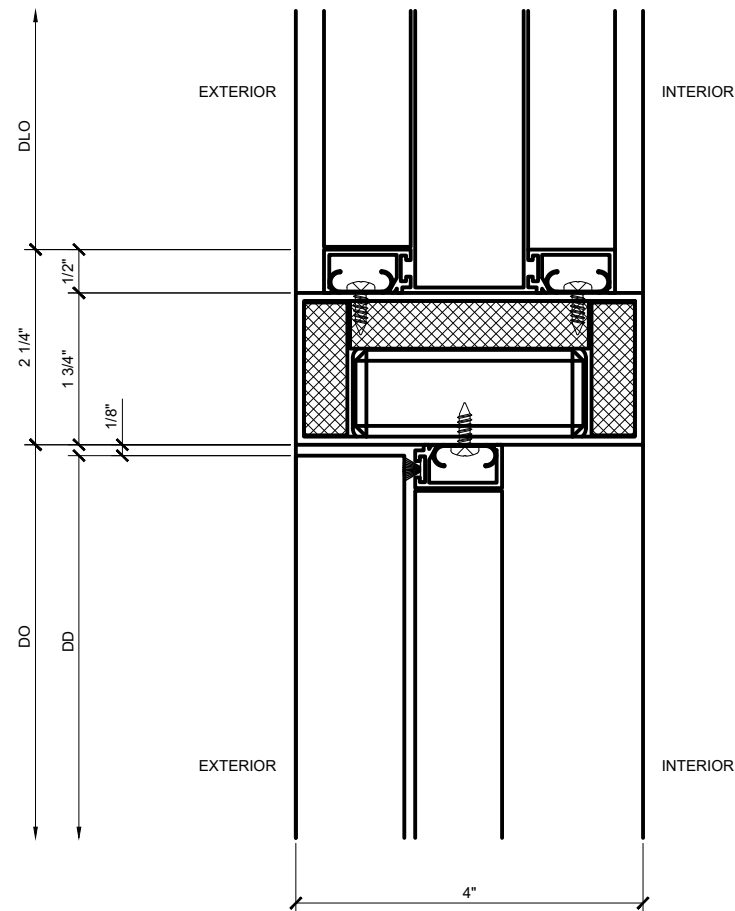
① SECTION DETAIL AT HEADER FOR UP & OVER FRAME  
ARCH REF: NONE 1'-0"=1'-0"



② SECTION DETAIL AT BOTTOM OF THE DOOR  
ARCH REF: NONE 1'-0"=1'-0"



③ SECTION DETAIL AT TRANSOM HEAD  
ARCH REF: NONE 1'-0"=1'-0"



④ SECTION DETAIL AT HEADER FOR TRANSOM FRAME  
ARCH REF: NONE 1'-0"=1'-0"

Revisions By:

CRL

2503 E. Vernon Avenue, Los Angeles, CA 90059-1887  
PH (800)-421-5144 FX: 800-587-7501 www.crlaurence.com

Description:  
BULLET RESISTANT SERIES  
FULL VISION BULLET  
RESISTANT DOORS

CRL

Drawn By: JG

Date: 01/26/18

Scale: AS NOTED

File Name:

FullVisionBulletResistantDoor.com

Sheet

2.01

Revisions By:

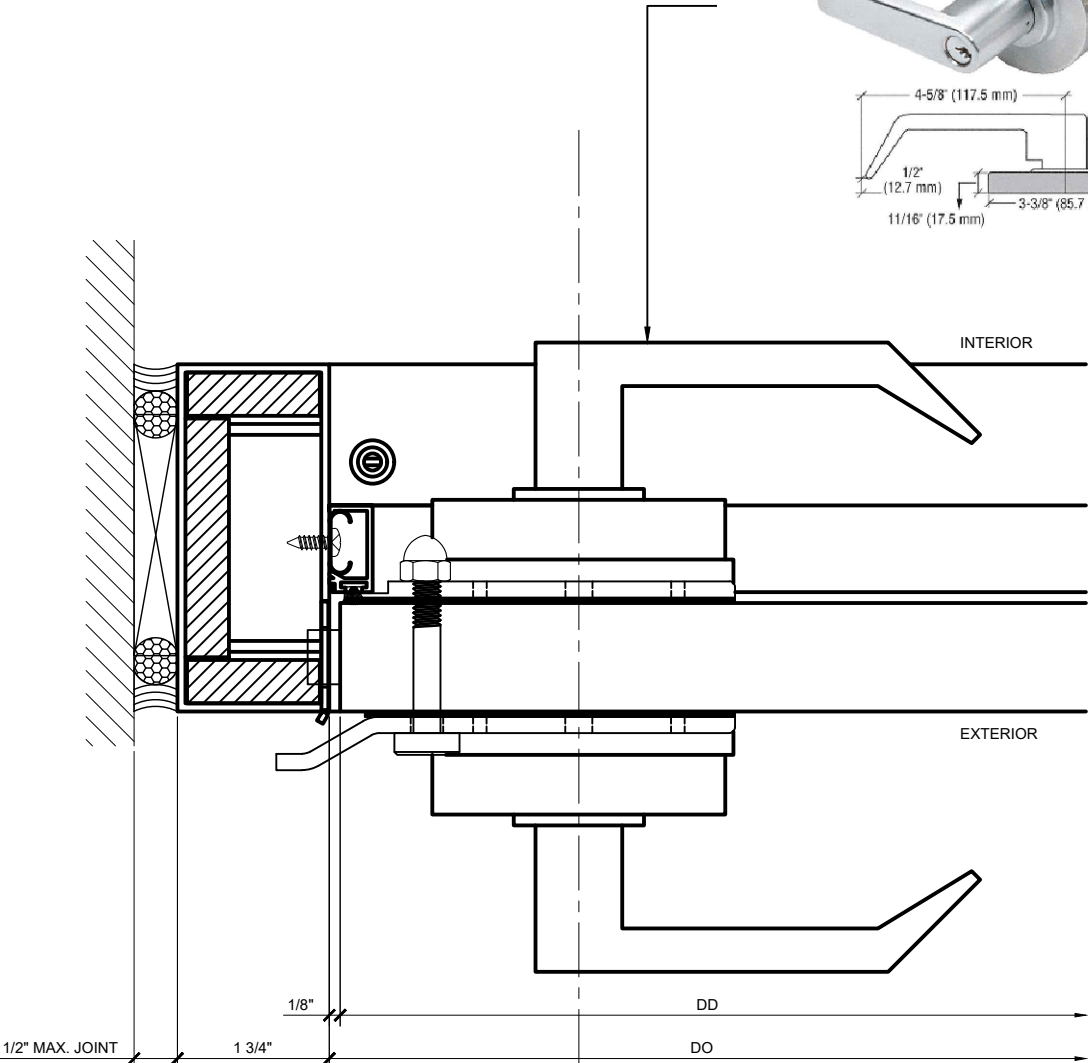
CRL

2503 E. Vernon Avenue, Los Angeles, CA 90059-1897  
 PH (800) 421-5144 FX: 600-587-7501 www.crlaurence.com

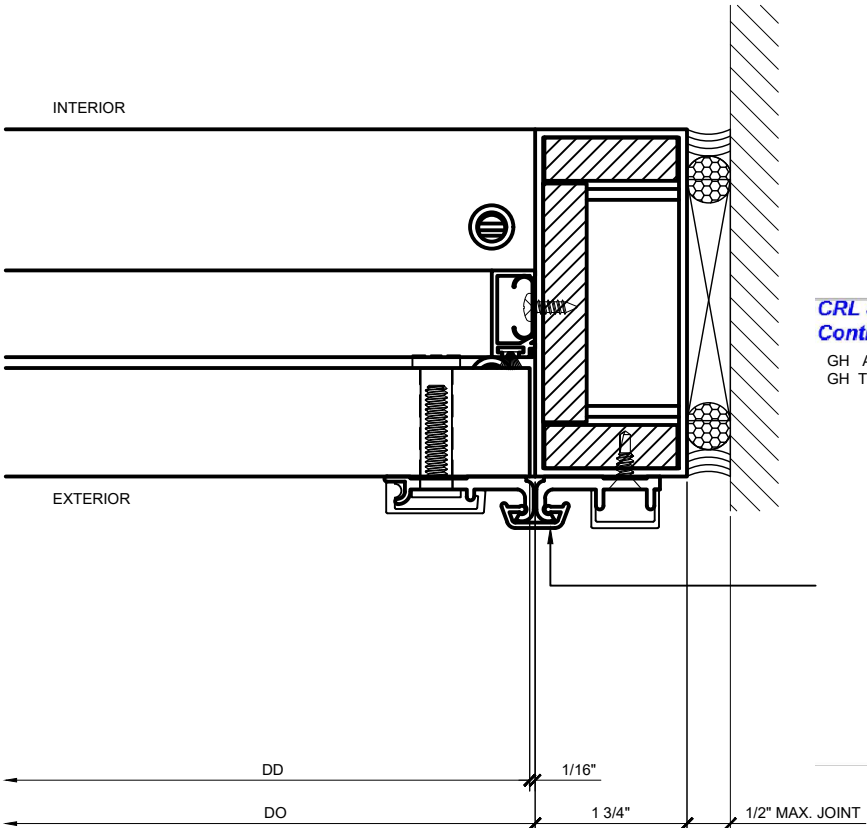
Discription:  
 BULLET RESISTANT SERIES  
 FULL VISION BULLET  
 RESISTANT DOORS

CRL
Drawn By: JG Date: 01/26/18 Scale: AS NOTED File Name: FullVisionBulletResistantDoor.com
Sheet

CRL Heavy-Duty Brushed Chrome Grade 1 Lever Locksets Storeroom - Schlage® 6-Pin



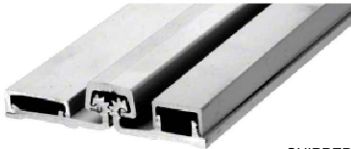
⑤ LEAD / LOCK DOOR JAMB DETAIL  
ARCH REF: NONE 1'-0"=1'-0"



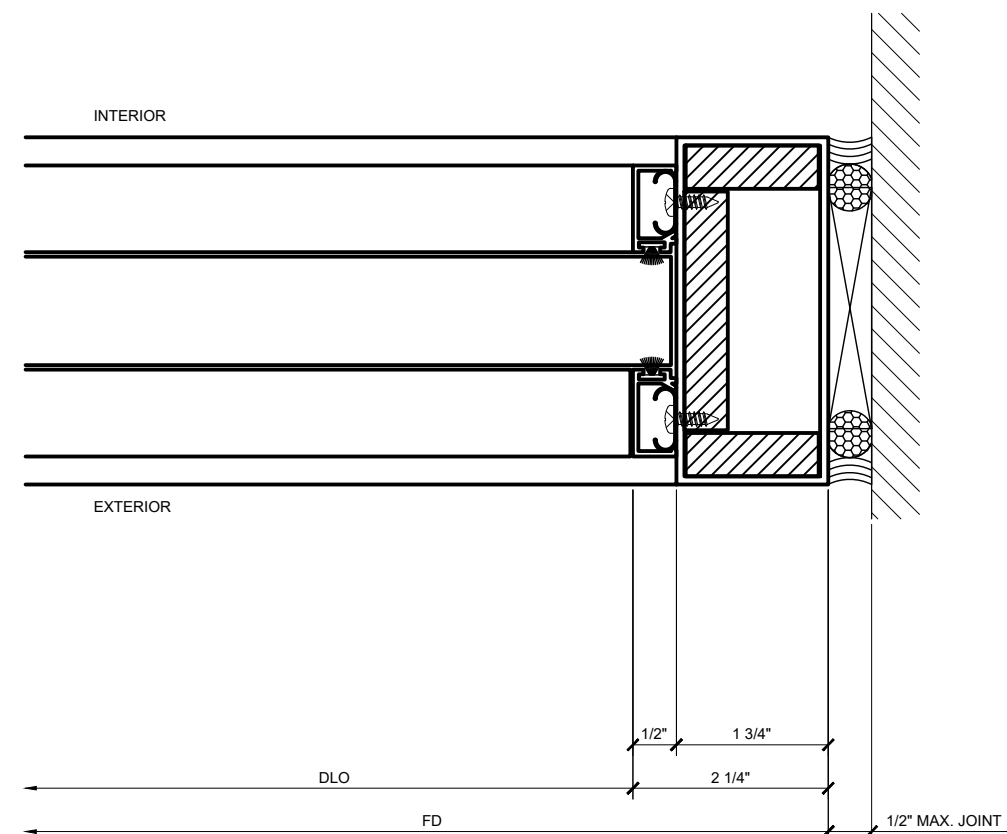
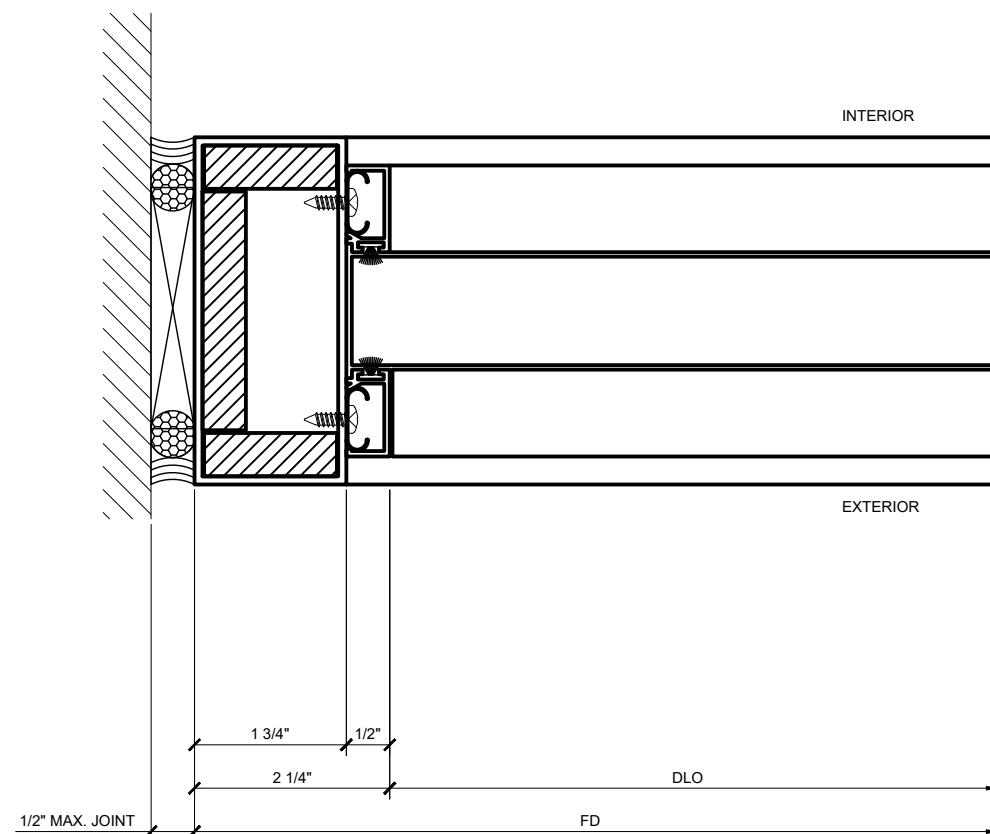
⑥ HINGE DOOR JAMB DETAIL WITH GEAR HINGE  
ARCH REF: NONE 1'-0"=1'-0"

CRL Satin Anodized 250 Series Heavy-Duty Full Surface Continuous Hinge

GH ATTACHED TO DOOR BY CRL  
GH TO BE ATTACHED TO FRAME BY CUSTOMER



#12 X 3/4 UNDERCUT PHILLIPS FLAT HEAD  
SELF DRILLING SCREWS ( SHIPPED LOOSE,  
TO BE INSTALLED BY CUSTOMER )



Revisions By:

**CRJ**

PH (800)-421-6144 FX: 800-587-7501 [www.crlaurence.com](http://www.crlaurence.com)

Discription:  
BULLET RESISTANT SERIES  
FULL VISION BULLET  
RESISTANT DOORS

CRL

Drawn By: TG

Date: 01/26/18

Scale:	AS NOTED
--------	----------

File Name:

FullVisionBulletResistantDoor.com

Sheet

### 3.02