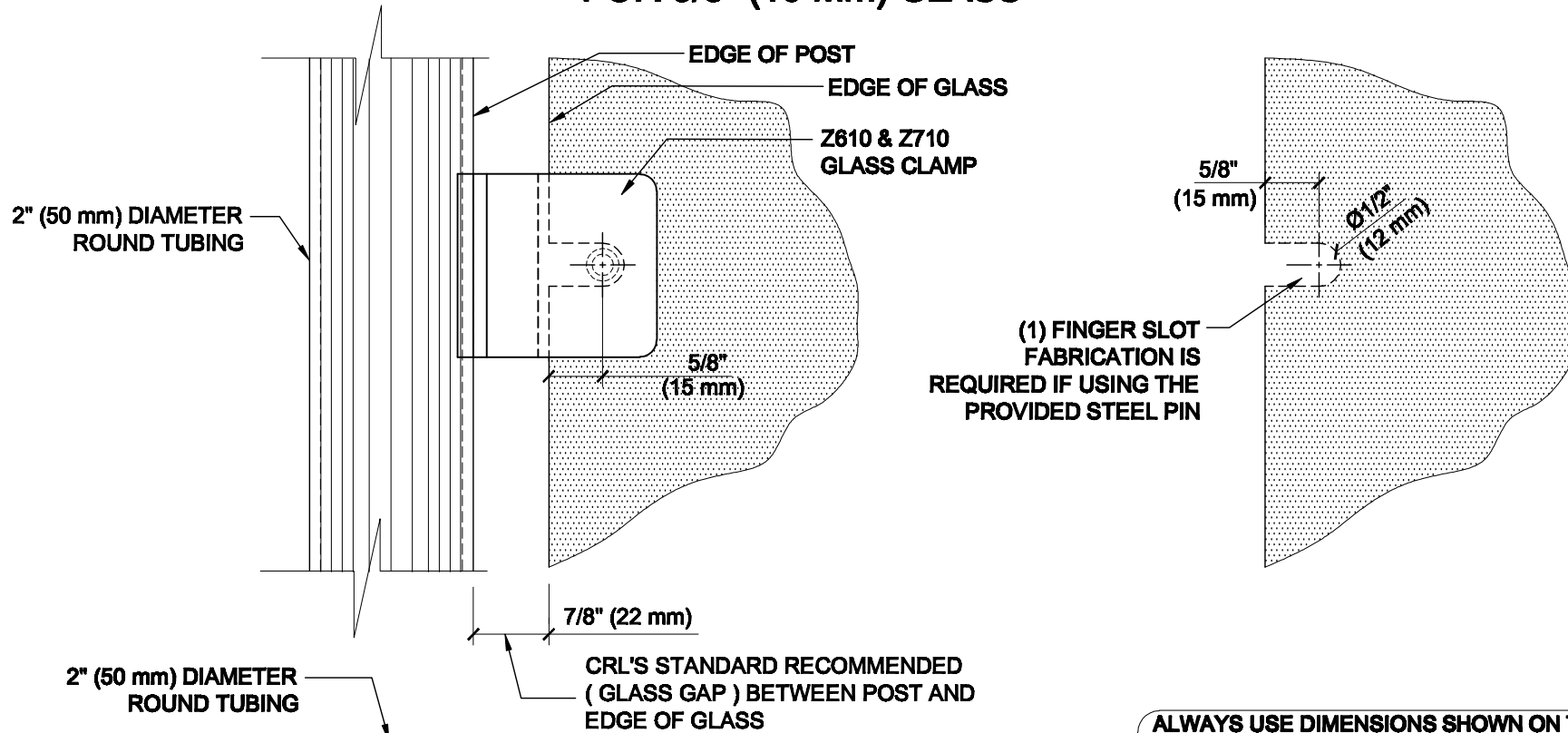


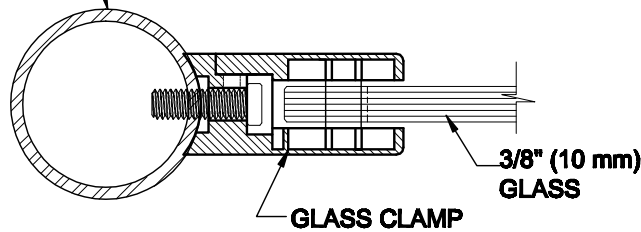
GLASS FABRICATION TEMPLATE FOR THE Z-SERIES SQUARE TYPE RADIUS BASE CLAMPS FOR 3/8" (10 mm) GLASS



ALWAYS USE DIMENSIONS SHOWN ON THE PLAN.
DO NOT SCALE OR DIMENSION ACTUAL DRAWING
TO ENSURE ACCURACY

**GLASS FABRICATION
TEMPLATE USED FOR:**

CATALOG NUMBER	TUBE DIA
Z610BR	2" (50.8 mm) ONLY
Z610CH	2" (50.8 mm) ONLY
Z610SC	2" (50.8 mm) ONLY
Z610BN	2" (50.8 mm) ONLY
Z610GP	2" (50.8 mm) ONLY
Z610W	2" (50.8 mm) ONLY
Z710BS	2" (50.8 mm) ONLY
Z710PS	2" (50.8 mm) ONLY



SPECIFICATIONS:

GLASS THICKNESS: MODELS FOR 3/8" (10 mm) GLASS.

BASE DESIGN: RADIUS BACK

FOR USE WITH: 2" (50.8 mm) DIAMETER ROUND TUBING ONLY.

MATERIAL: CHOICE OF ZINC CONSTRUCTED OR STAINLESS STEEL. STAINLESS STEEL OR POWDER PAINTED ZINC CLAMPS ARE RECOMMENDED FOR MORE DURABILITY IN EXTERIOR APPLICATIONS.

GLASS FABRICATION: FOR 3/8" (10mm), THICK GLASS. 1/2" (12mm)

FINGER SLOT REQUIRED IF USING PROVIDED STEEL PIN FOR GLASS SUPPORT

INCLUDES: RUBBER GASKETS AND STEEL PIN (FOR OPTIONAL USE) WITH GROMMET.



ARCHITECTURAL PRODUCTS
PH: 800-421-8144 FX: 800-262-3299
WWW.CRLAURENCE.COM

DESCRIPTION:

Z-SERIES SQUARE TYPE RADIUS BASE GLASS CLAMP

FOR 3/8" (10 mm) THICK GLASS

CAT. NO:	(SEE CHART)	DATE:	10/23/09
FILE NAME:	Z610-Gls Fab REV	SCALE:	N.T.S.
DRAWN BY:	R.A.	CHECKED BY:	C.H.
		SHT 1 OF 1	