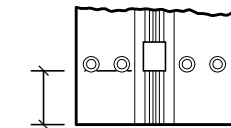


#12 x 82" F.H. countersunk wood or machine screw (38 places).

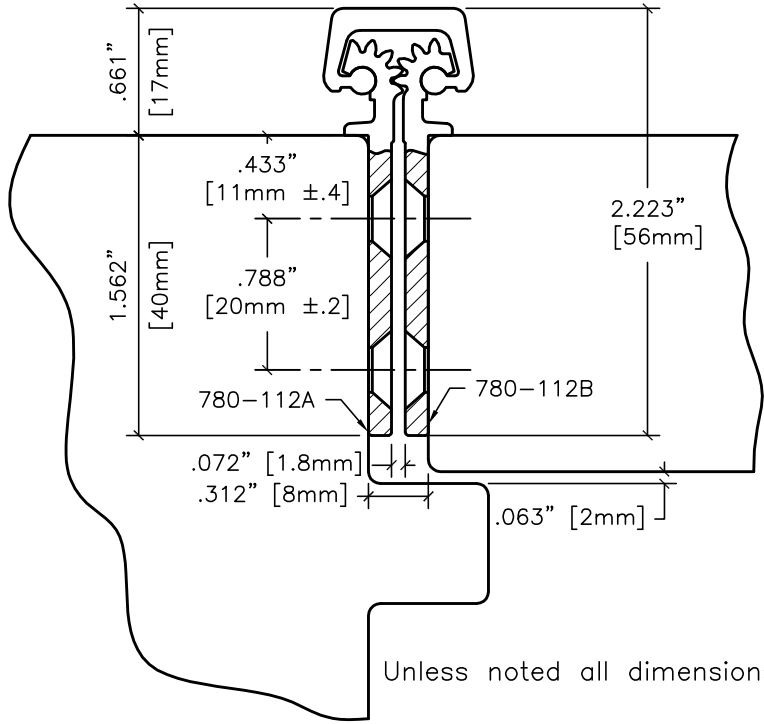


32 bearings spaced equally @ 2.563" center to center.

1.402" [35.6mm] Ref.



End Of Hinge To First Bearing, Both Ends.



Unless noted all dimensions  $\frac{\pm.020''}{\pm.5mm}$

### Vertical Hole Spacing

Non cumulative tolerances on hole to hole spacing.

	Metric (mm)	Decimal (in.)
A	2108.0 $\begin{smallmatrix} +0.00 \\ -0.80 \end{smallmatrix}$	82.992 $\begin{smallmatrix} +0.000 \\ -0.030 \end{smallmatrix}$
B	40.0 ±.25	1.575 ±.010
C	85.0 ±.20	3.346 ±.008
D	130.0 ±.20	5.118 ±.008
E	200.0 ±.20	7.874 ±.008
F	257.0 ±.20	10.118 ±.008

	<b>HAGER COMPANIES</b> HIGHWAY 78 WEST P.O. BOX 3368 OXFORD, ALABAMA 36203		
	780-112 83" HD		
DATE 10-25-96	REV. 01-15-02	DR. KBJ	SCALE None
FILENAME z:\roton\template\standard\780-112.dwg			
<b>DRAWING NO.</b>		<b>780112083HD</b>	