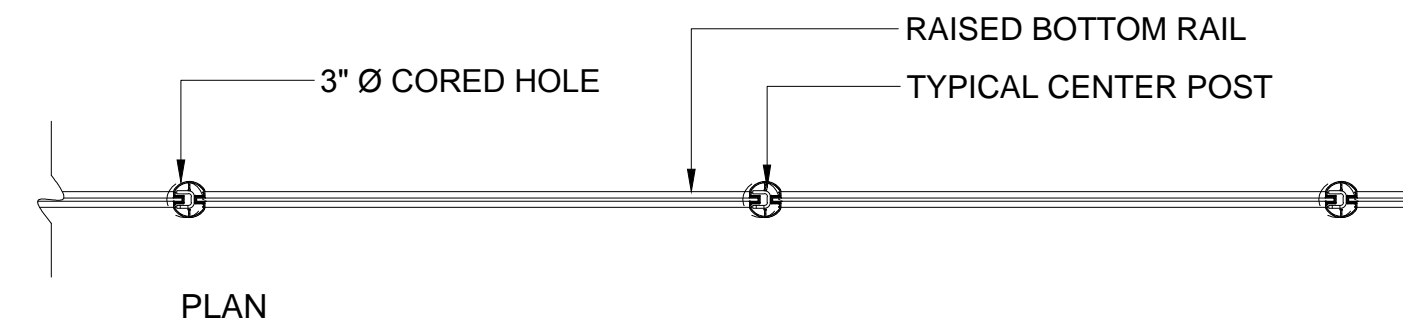
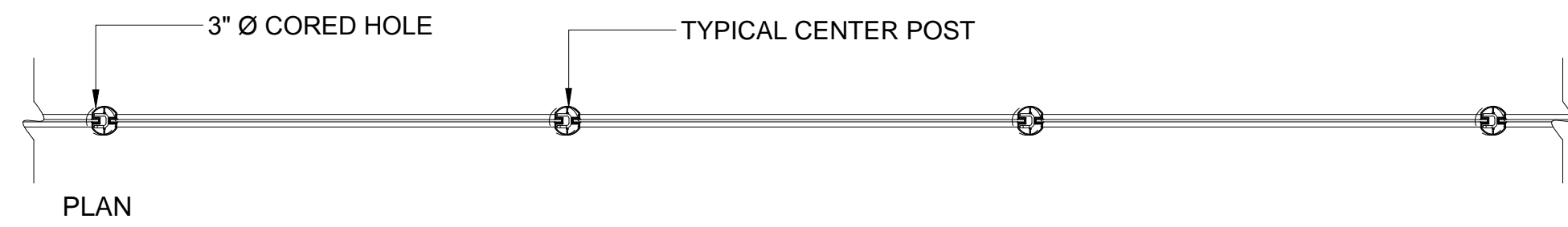
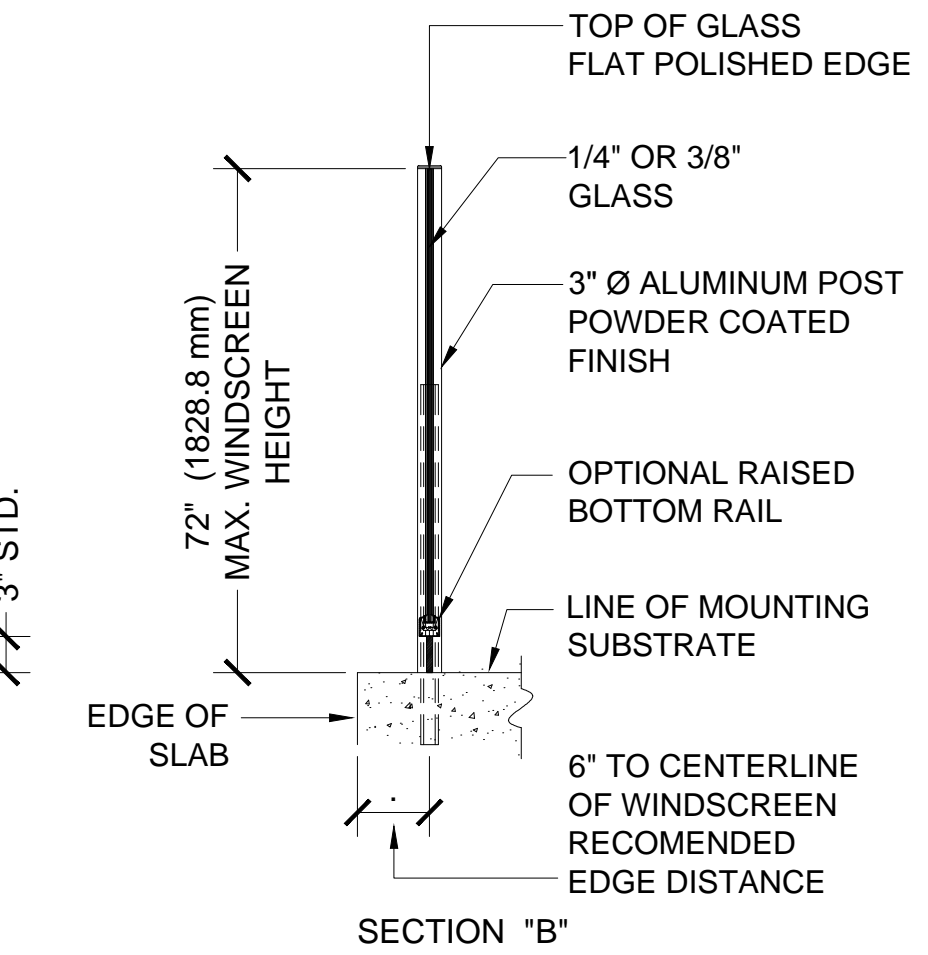
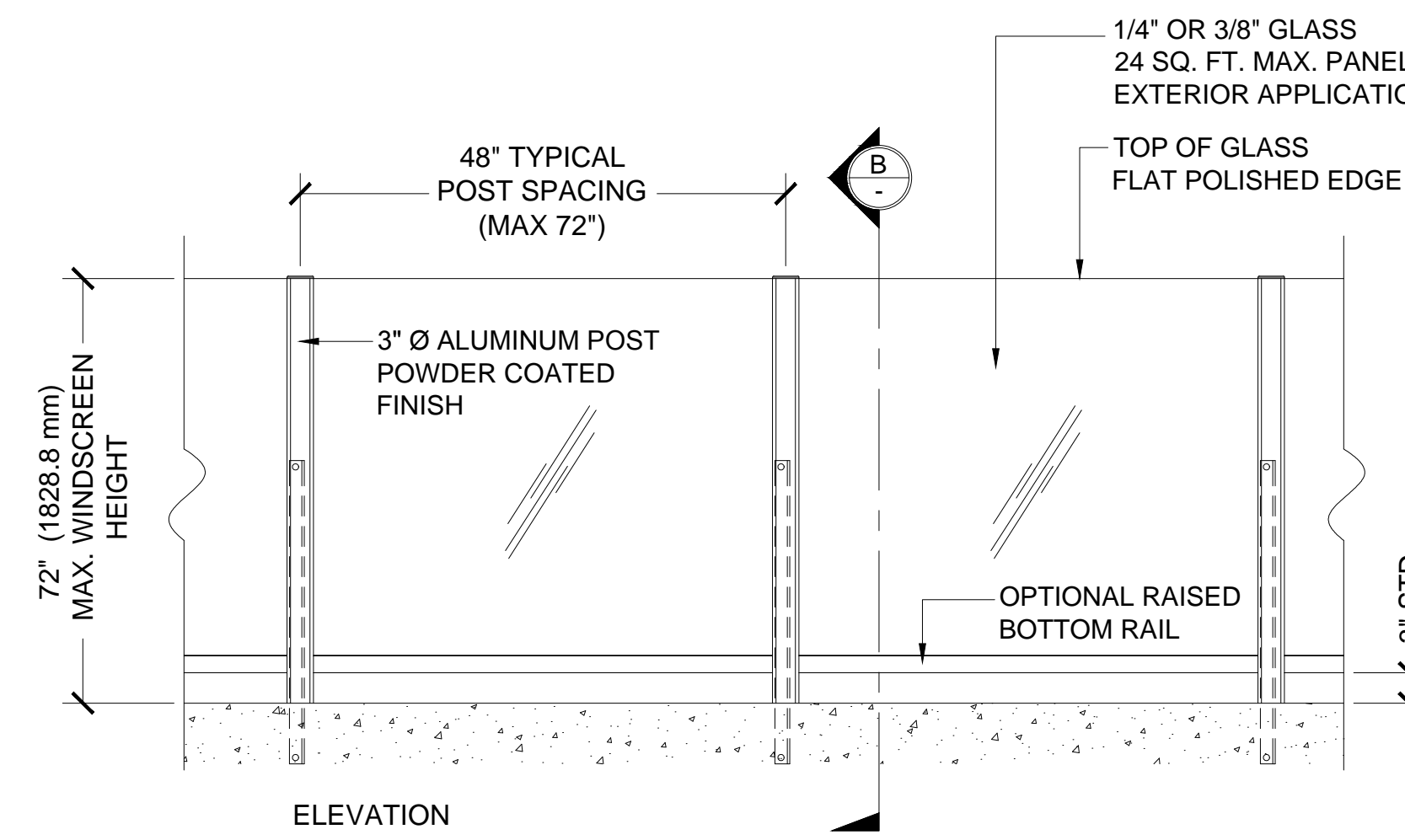
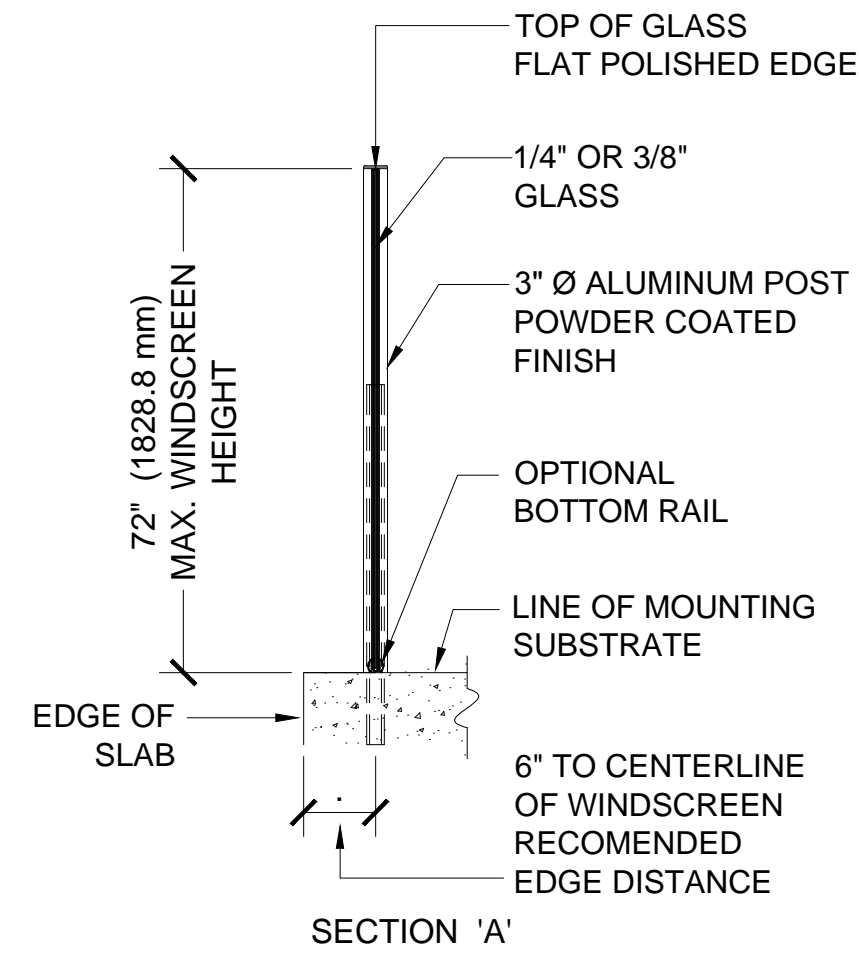
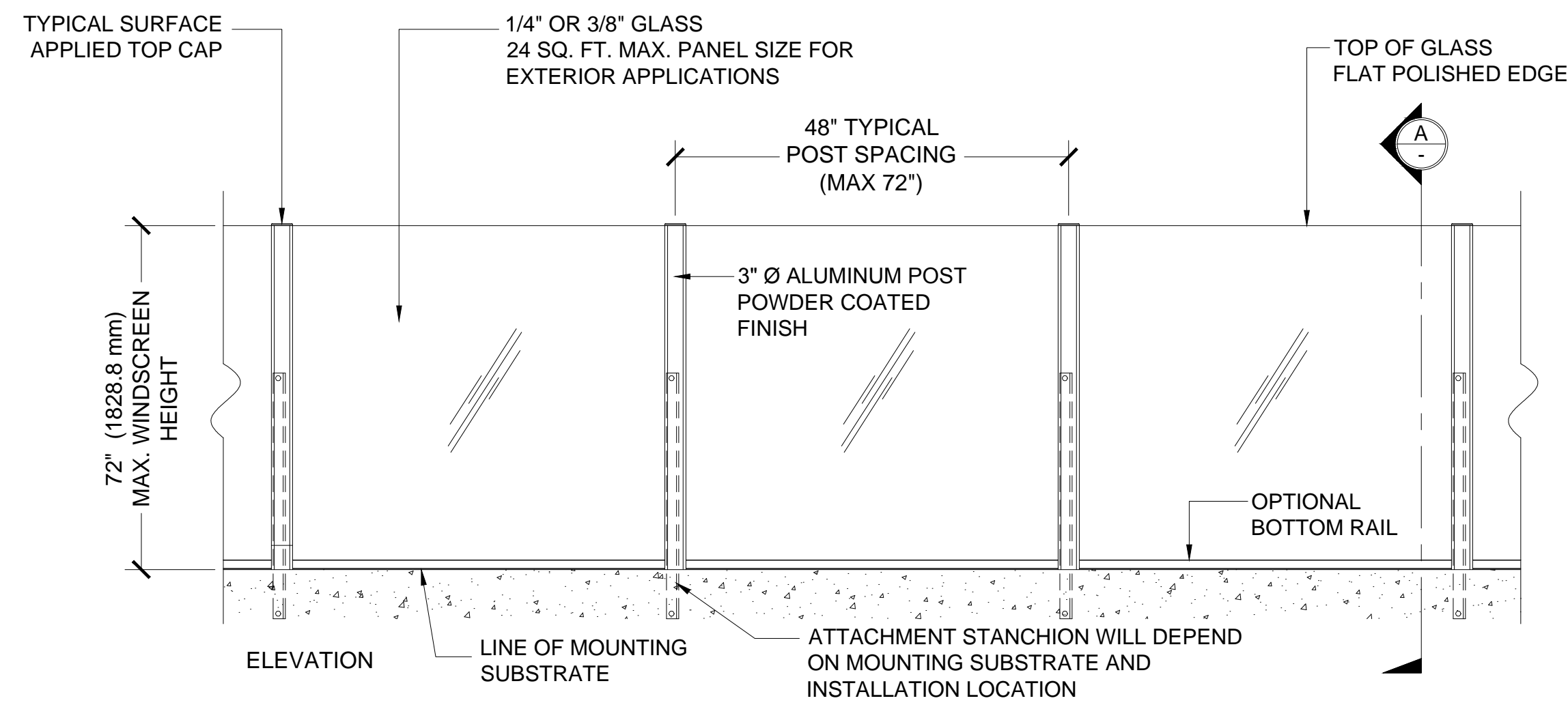


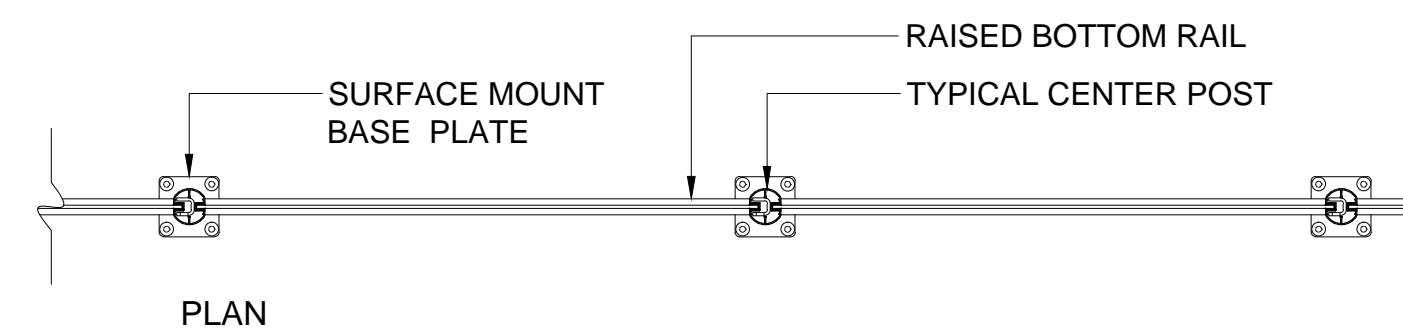
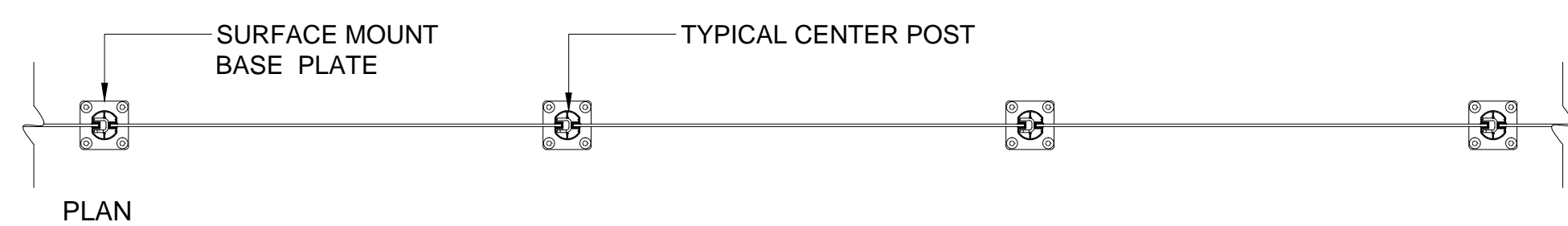
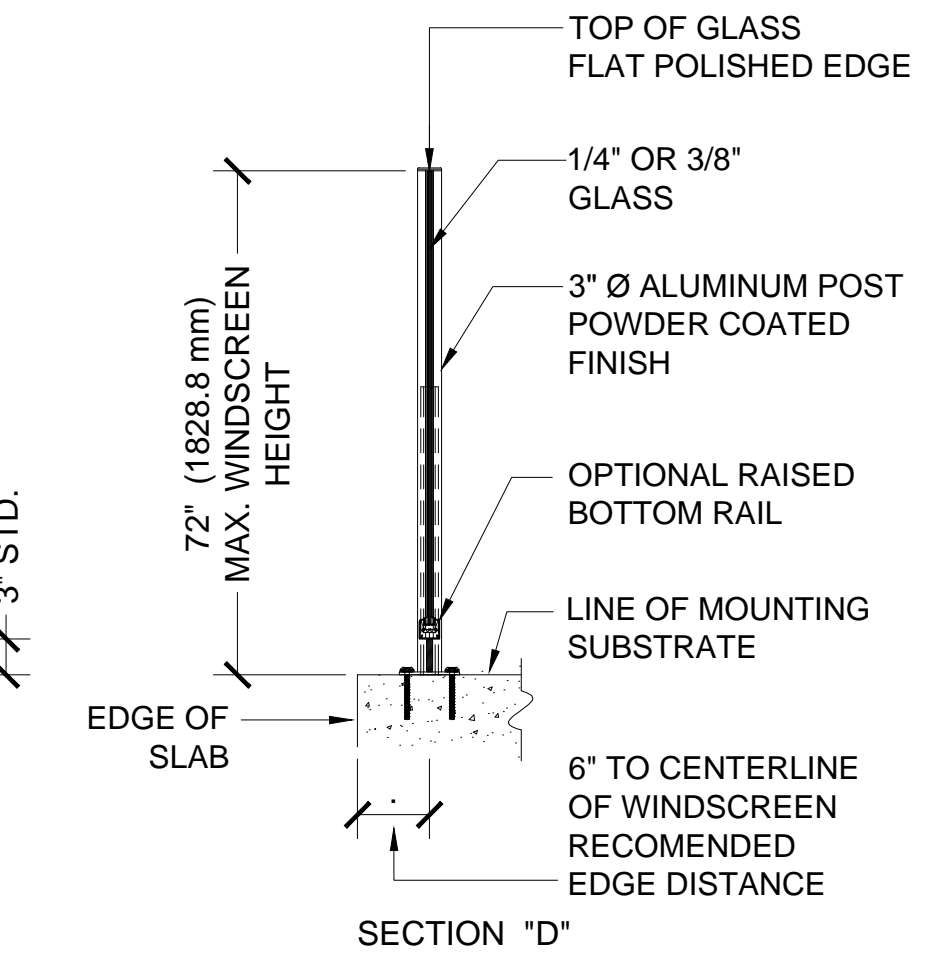
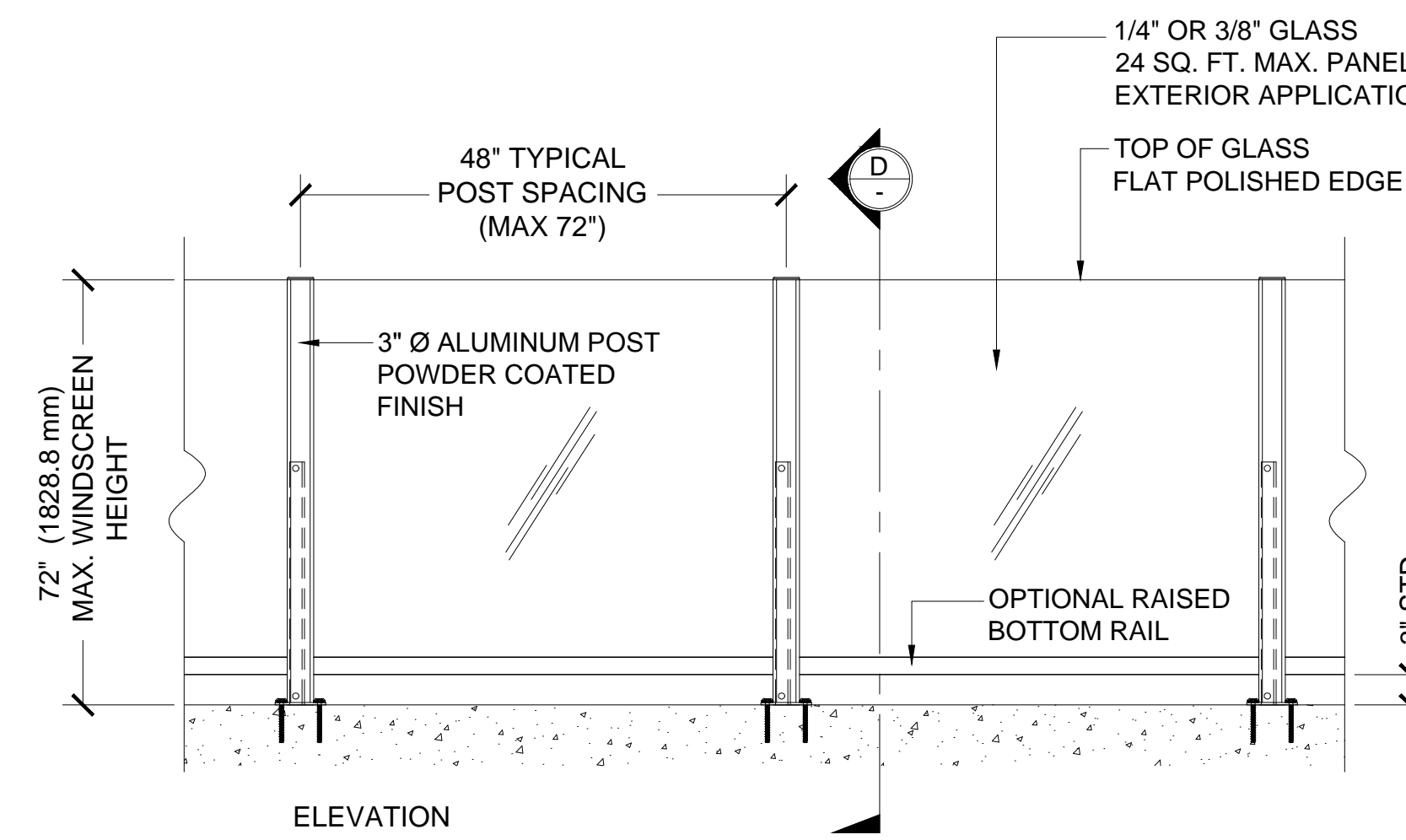
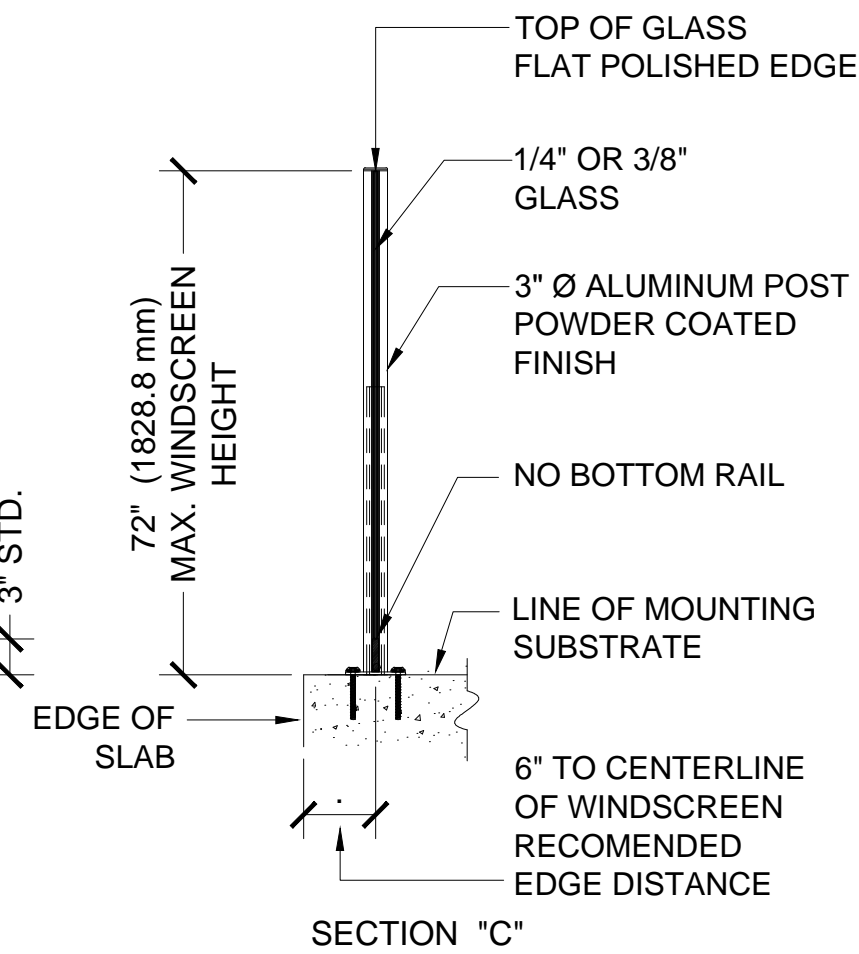
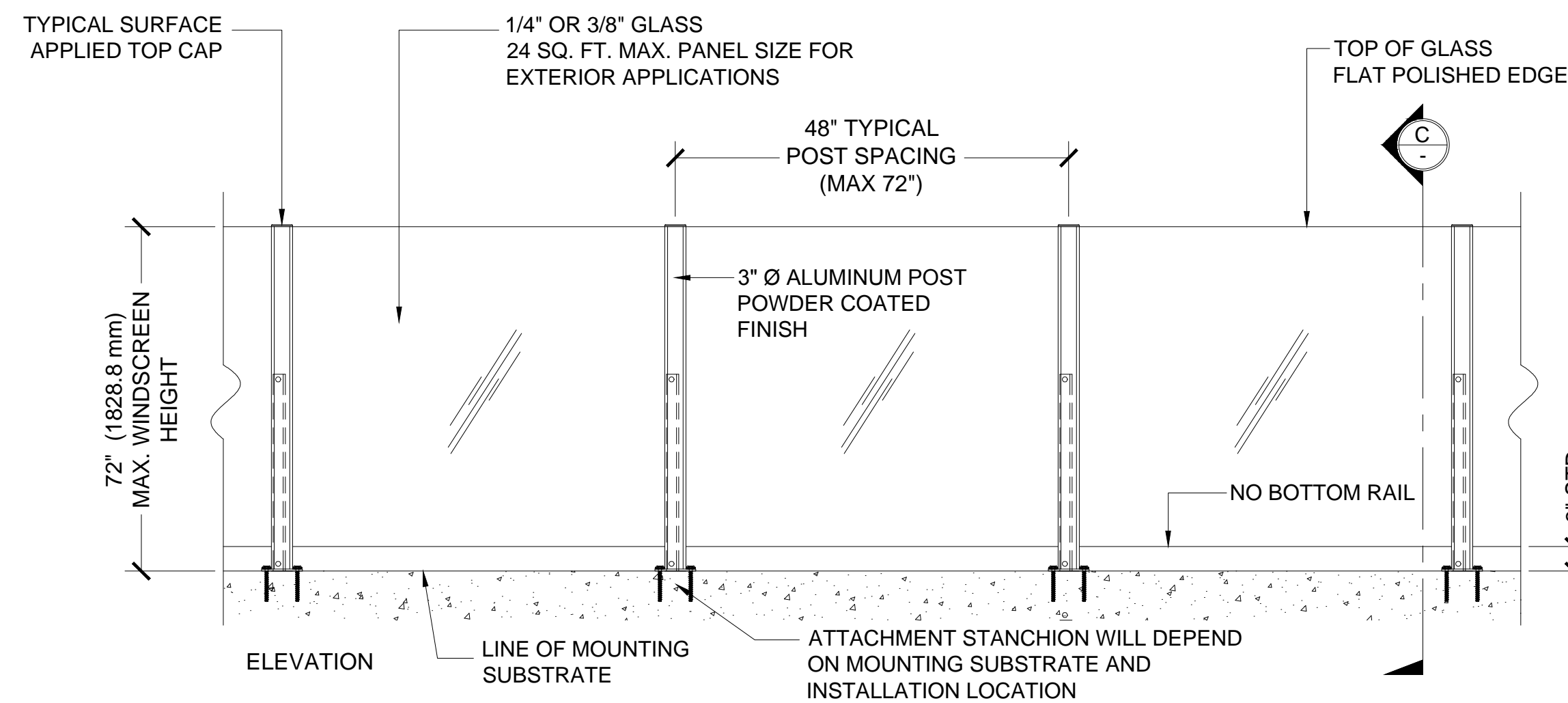
# CRL AWS - ALUMINUM WINDSCREEN SYSTEM

## TYPICAL PLANS & ELEVATIONS - ROUND POSTS



**1** TYPICAL ALUMINUM WINDSCREEN - (w/ FLOOR MOUNT BOTTOM RAIL)  
 DETAILED WITH CORE - MOUNT STANCHIONS SCALE: 3/4"=1'-0"

**2** TYPICAL ALUMINUM WINDSCREEN (w/ RAISED BOTTOM RAIL)  
 DETAILED WITH CORE - MOUNT STANCHIONS SCALE: 3/4"=1'-0"



**3** TYPICAL ALUMINUM WINDSCREEN (w/ NO BOTTOM RAIL)  
 DETAILED WITH SURFACE - MOUNT STANCHIONS SCALE: 3/4"=1'-0"

**4** TYPICAL ALUMINUM WINDSCREEN (w/ RAISED BOTTOM RAIL)  
 DETAILED WITH SURFACE - MOUNT STANCHIONS SCALE: 3/4"=1'-0"

Revisions By:



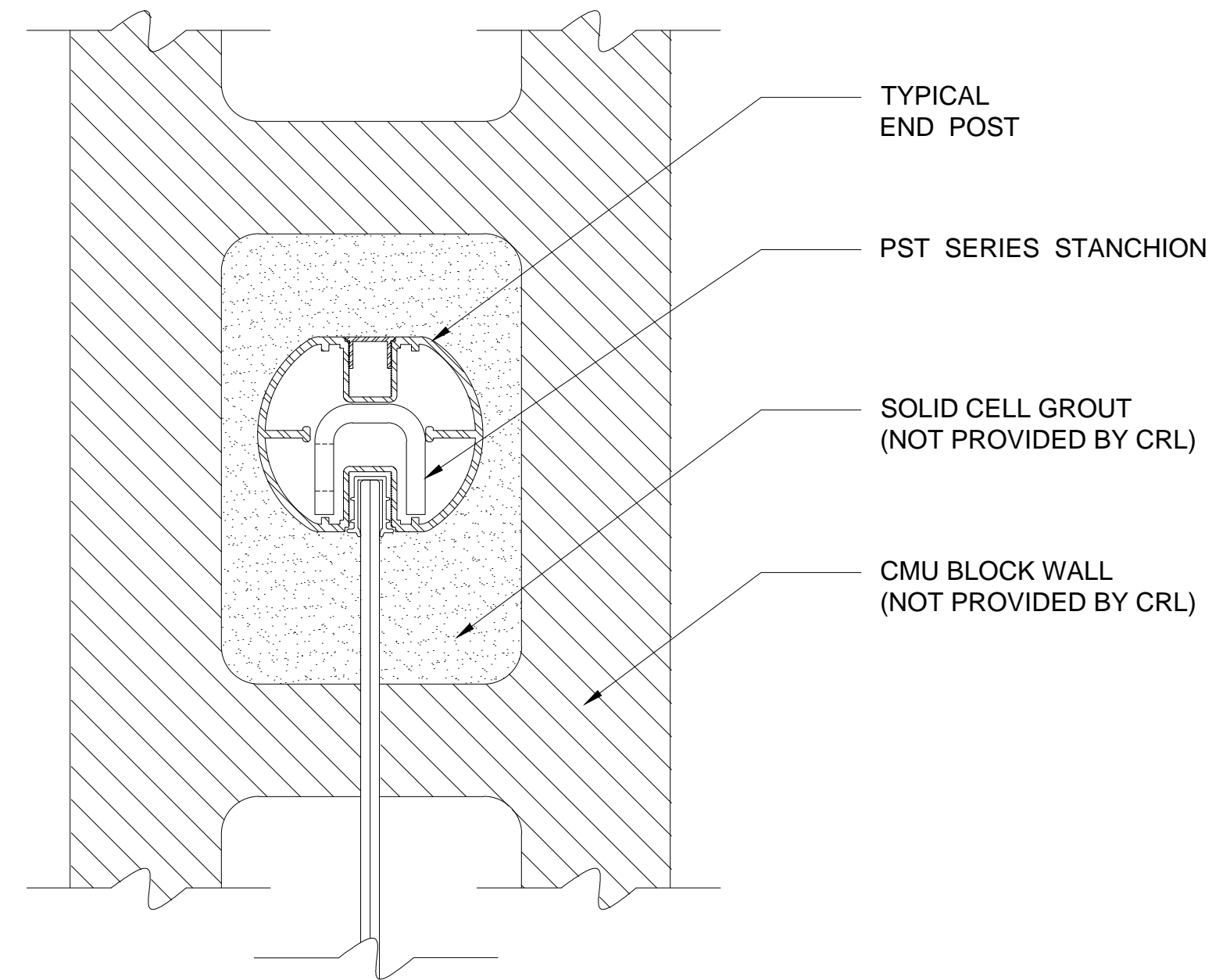
Discription:  
 CRL / AWS  
 ALUMINUM ROUND  
 POST GLASS WINDSCREEN  
 SYSTEM

Drawn By: RPD  
 Date: 01/27/14  
 Scale: AS NOTED  
 File Name:  
 CRL-AWS-RndPGW SYS.dwg

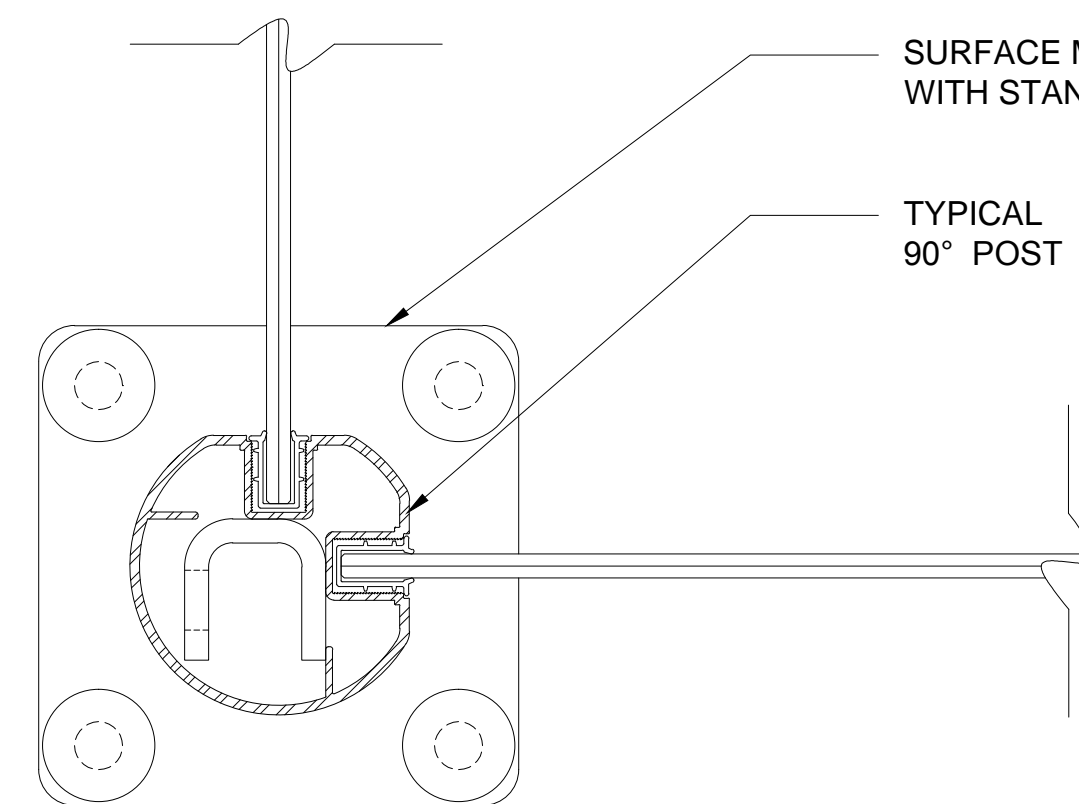
Sheet

# CRL AWS - ALUMINUM WINDSCREEN SYSTEM

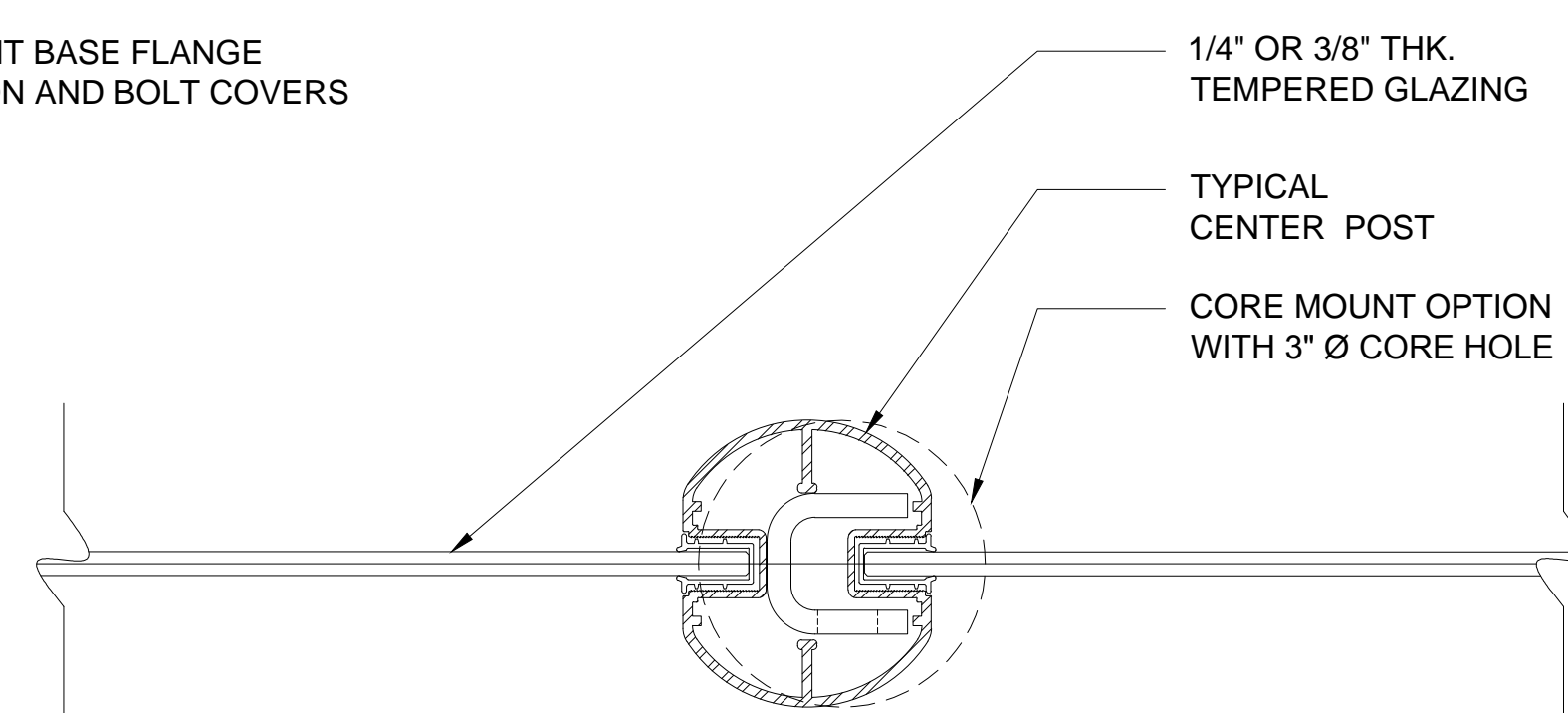
## TYPICAL AWS - DIFFERENT PLAN CONFIGURATIONS - ROUND POSTS



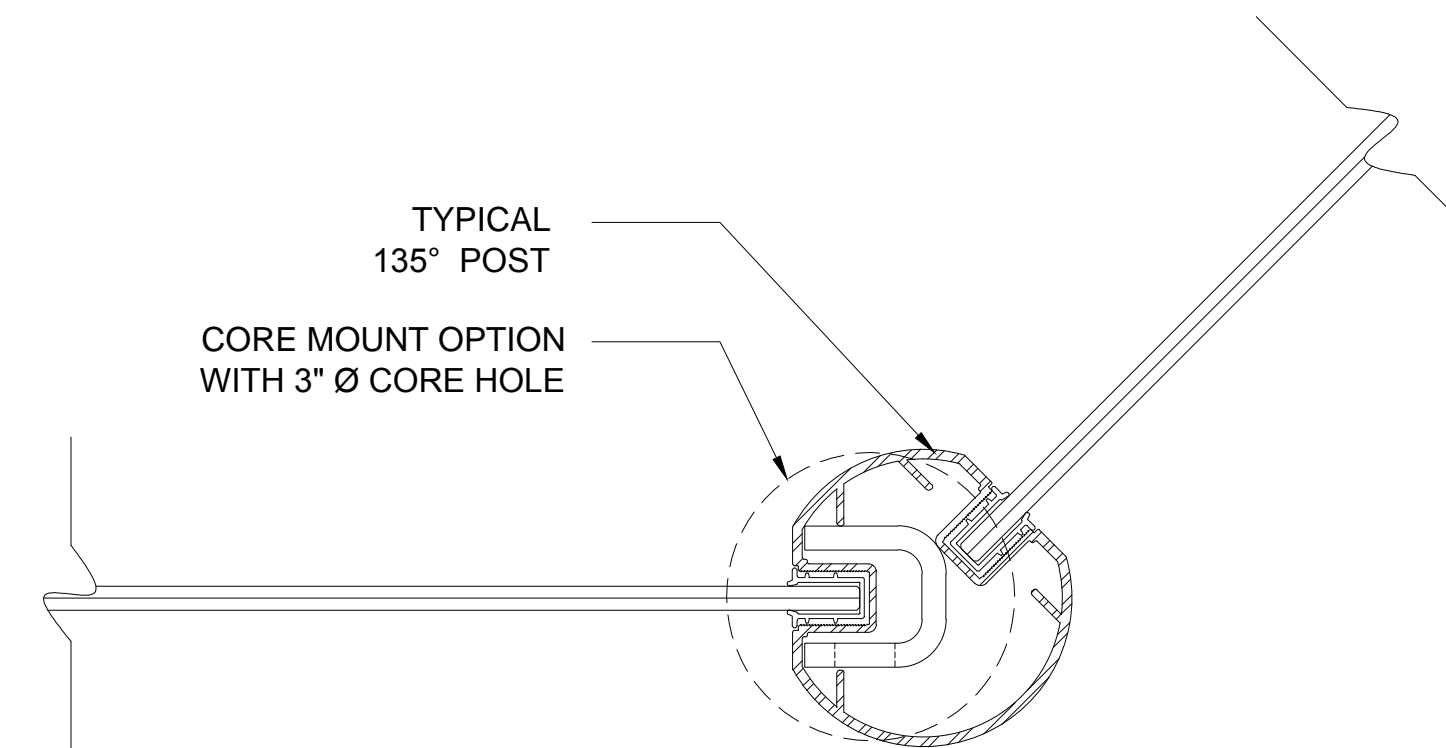
**1** CRL AWS 3" Ø ROUND 180° ALUMINUM END POST \*  
 DETAILED WITH CORE MOUNTING OPTION FOR CMU BLOCK WALL  
 SCALE: 6"=1'-0"



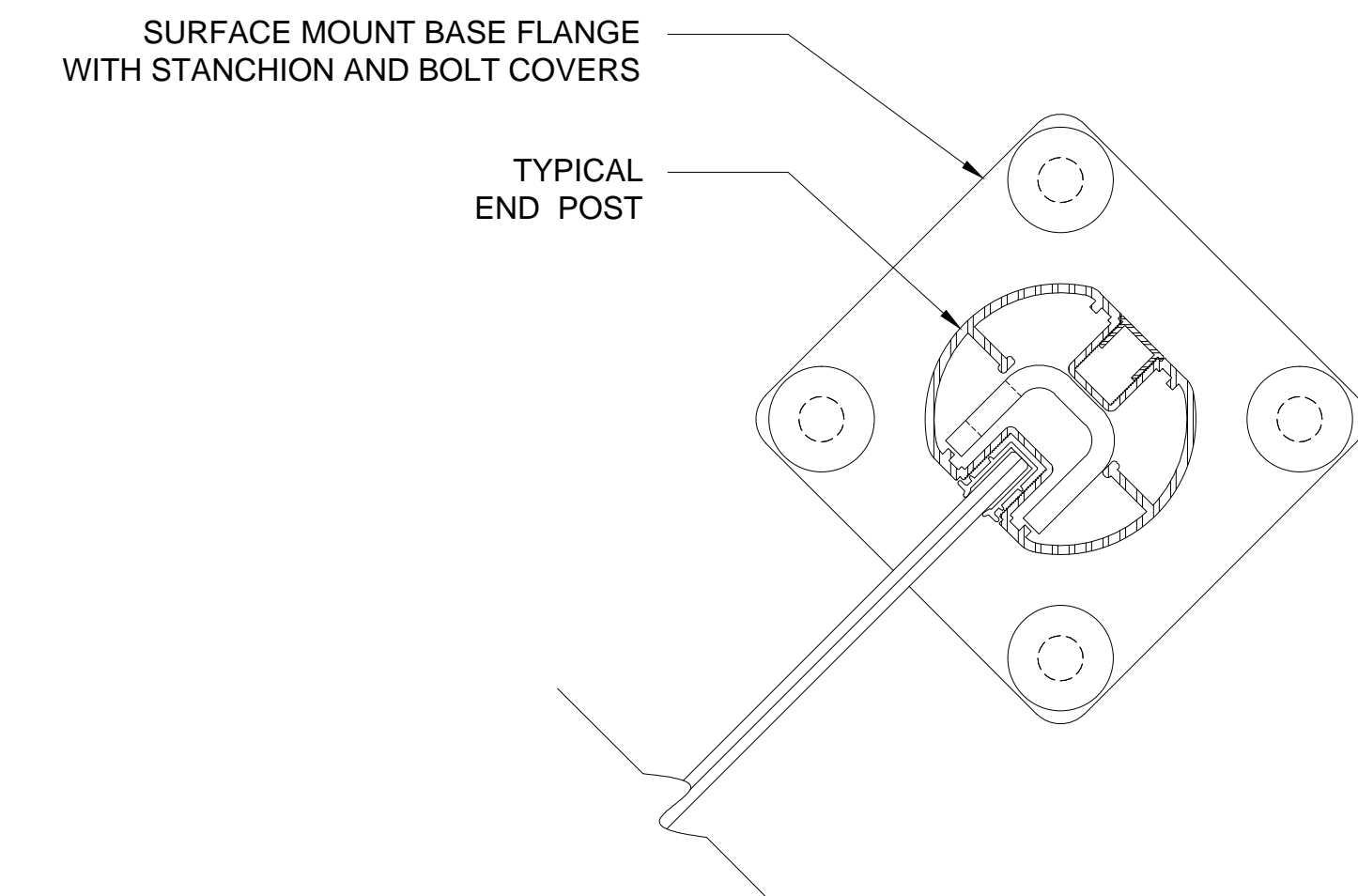
**2** CRL AWS 3" Ø ROUND 90° CORNER ALUMINUM POST \*  
 DETAILED WITH SURFACE MOUNTING OPTION  
 SCALE: 6"=1'-0"



**3** CRL AWS 3" Ø ROUND 180° ALUMINUM CENTER POST \*  
 DETAILED WITH CORE MOUNTING OPTION FOR CONCRETE SLAB  
 SCALE: 6"=1'-0"



**4** CRL AWS 3" Ø ROUND 135° CORNER ALUMINUM POST \*  
 DETAILED WITH CORE MOUNTING OPTION FOR CONCRETE SLAB  
 SCALE: 6"=1'-0"



**5** CRL AWS 3" Ø 180° ALUMINUM END POST \*  
 DETAILED WITH SURFACE MOUNTING OPTION  
 SCALE: 6"=1'-0"

\* NOTE: SEE PAGE 4 FOR DETAILS OF EACH POST MOUNTING OPTION

Revisions By:



Discription:  
 CRL / AWS  
 ALUMINUM ROUND  
 POST GLASS WINDSCREEN  
 SYSTEM

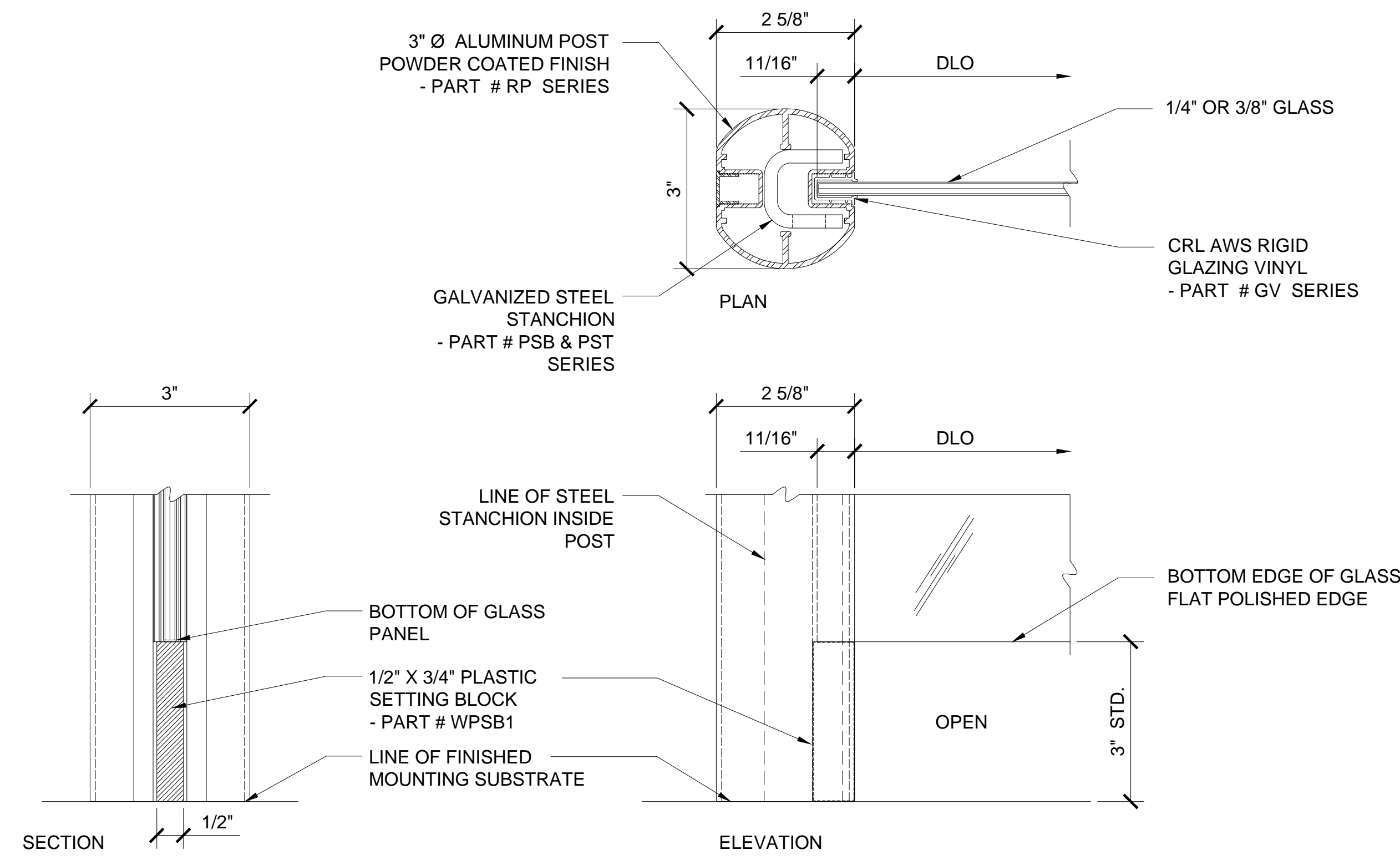
Drawn By: RPD  
 Date: 01/27/14  
 Scale: AS NOTED  
 File Name:  
 CRL-AWS-RndPGW SYS.dwg

Sheet

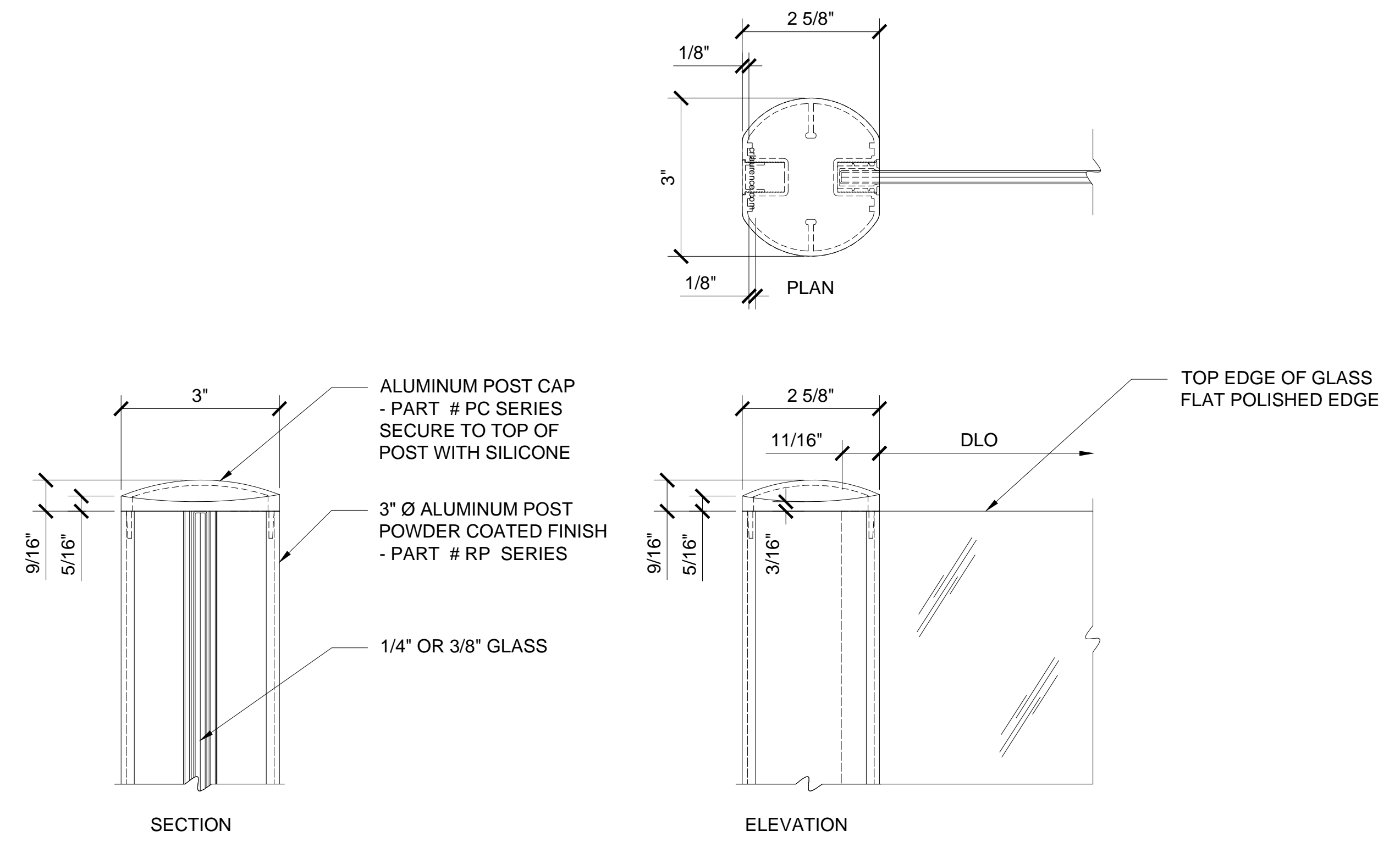
2

# CRL AWS - ALUMINUM WINDSCREEN SYSTEM

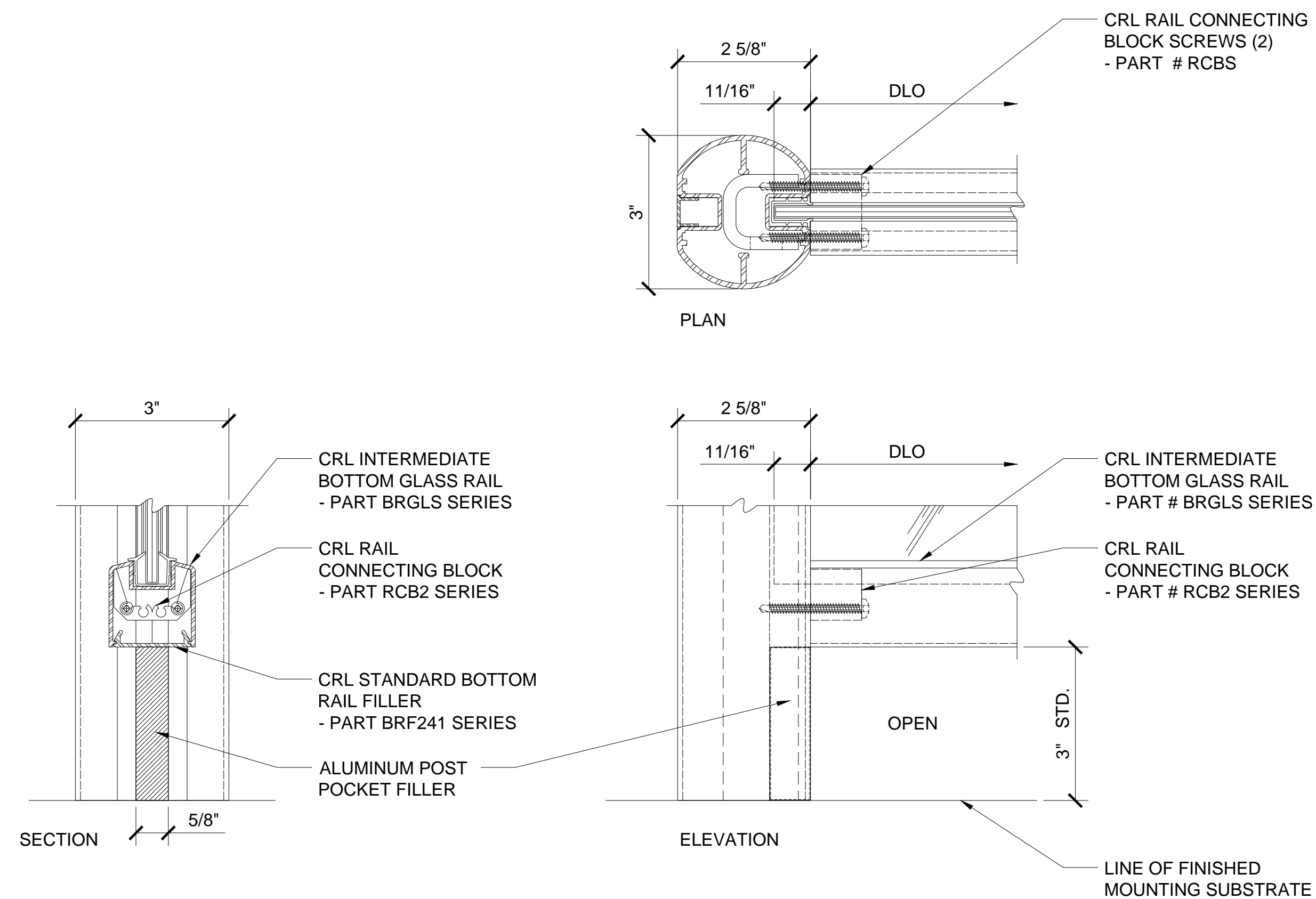
## TYPICAL AWS PANEL BOTTOM RAIL OPTIONS & TOP CORNER DETAILS - ROUND POSTS



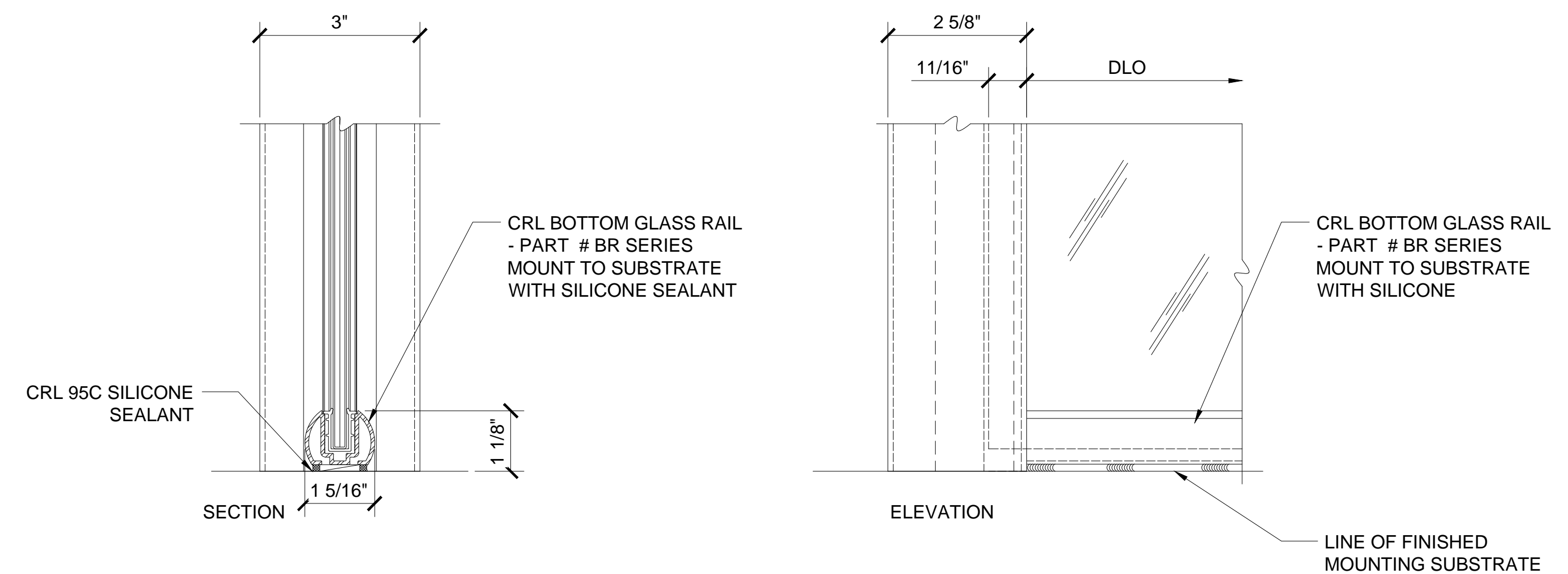
**1** **DETAIL WITH NO BOTTOM GLASS RAIL**  
 SEE PAGE 4 FOR POST MOUNTING OPTIONS  
 SCALE: 6"=1'-0"



**3** **DETAIL AT TOP CORNER OF WINDSCREEN PANEL**  
 DETAILED WITH 3" Ø ALUMINUM ROUND POST  
 SCALE: 6"=1'-0"



**2** **DETAIL WITH RAISED INTERMEDIATE BOTTOM GLASS RAIL**  
 SEE PAGE 4 FOR POST MOUNTING OPTIONS  
 SCALE: 6"=1'-0"



**4** **DETAIL WITH BOTTOM GLASS RAIL**  
 SEE PAGE 4 FOR POST MOUNTING OPTIONS  
 SCALE: 6"=1'-0"

Revisions By:



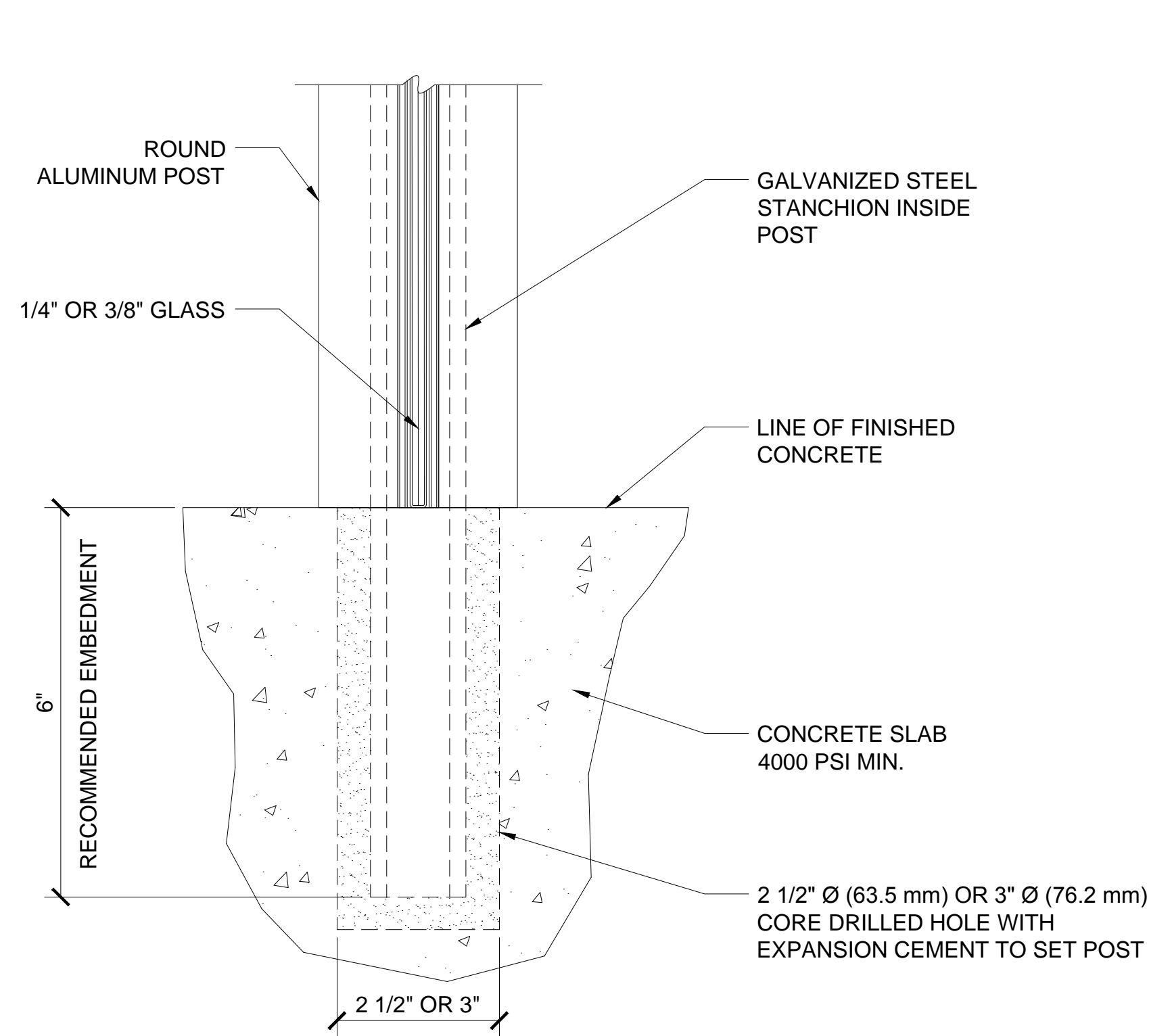
Description:  
 CRL / AWS  
 ALUMINUM ROUND  
 POST GLASS WINDSCREEN  
 SYSTEM

Drawn By: RPD  
 Date: 01/27/14  
 Scale: AS NOTED  
 File Name: CRL-AWS-RndPGW SYS.dwg

Sheet

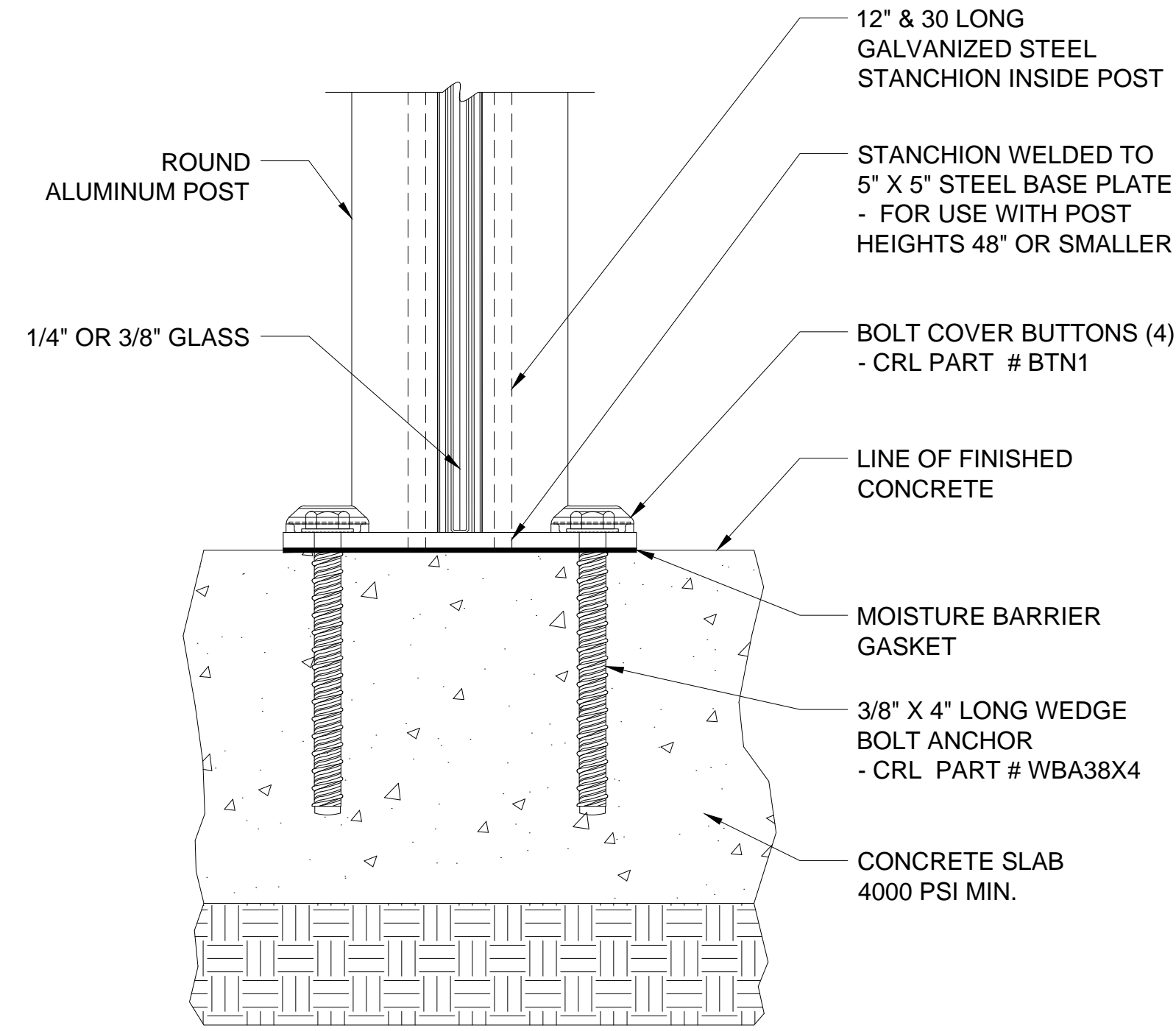
# CRL AWS - ALUMINUM WINDSCREEN SYSTEM

## TYPICAL AWS POST MOUNTING OPTIONS - ROUND POSTS



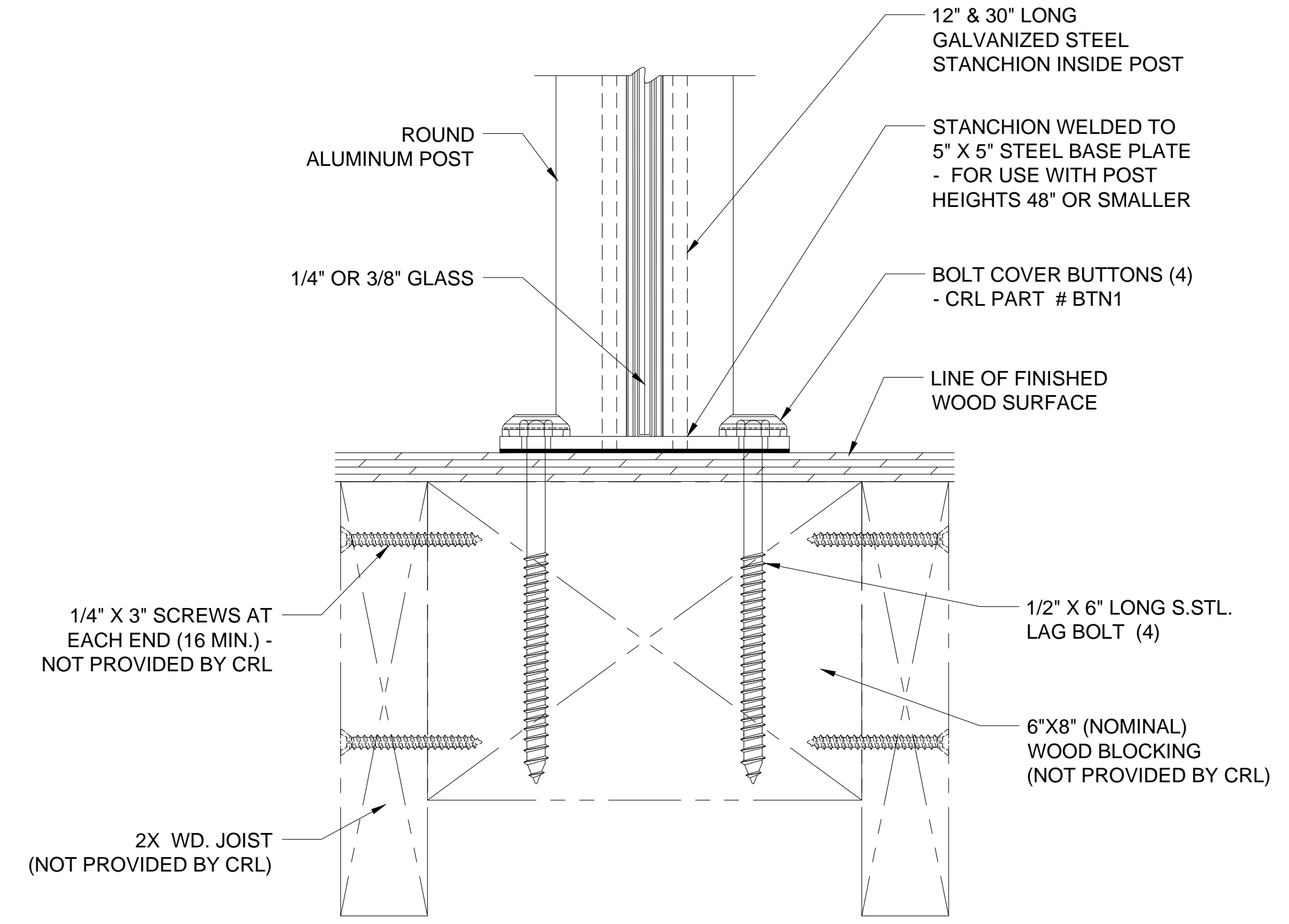
**1** TYPICAL CORE MOUNT DETAIL FOR CONCRETE SUBSTRATE

SPACING WILL DEPEND ON MOUNTING SUBSTRATE AND REGION OF PROJECT SEE PAGE 6 FOR STANCHION LENGTHS SCALE: 6"=1'-0"



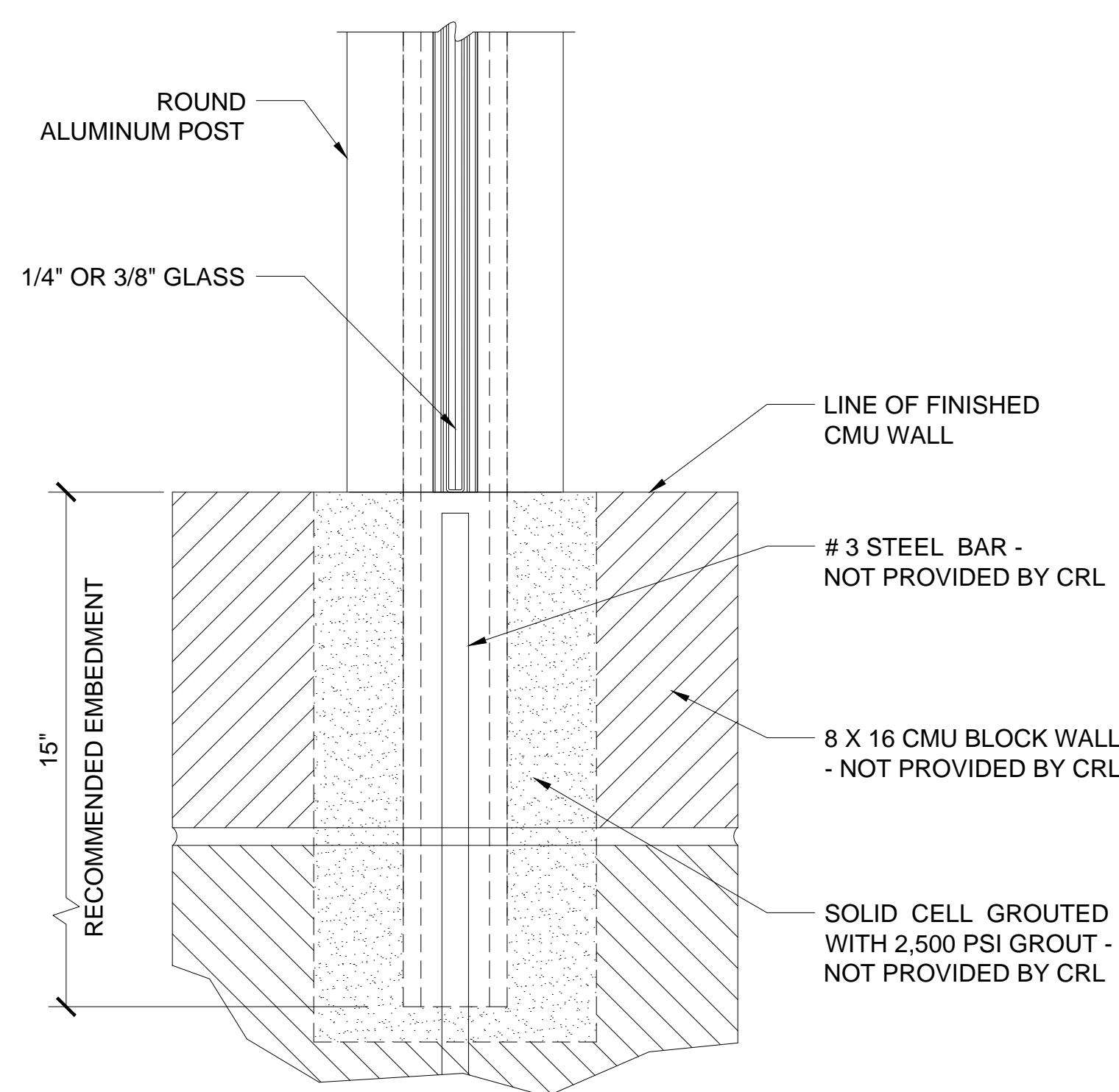
**3** TYPICAL SURFACE MOUNT DETAIL FOR CONCRETE SUBSTRATE

SPACING WILL DEPEND ON MOUNTING SUBSTRATE AND REGION OF PROJECT SEE PAGE 6 FOR STANCHION LENGTHS SCALE: 6"=1'-0"



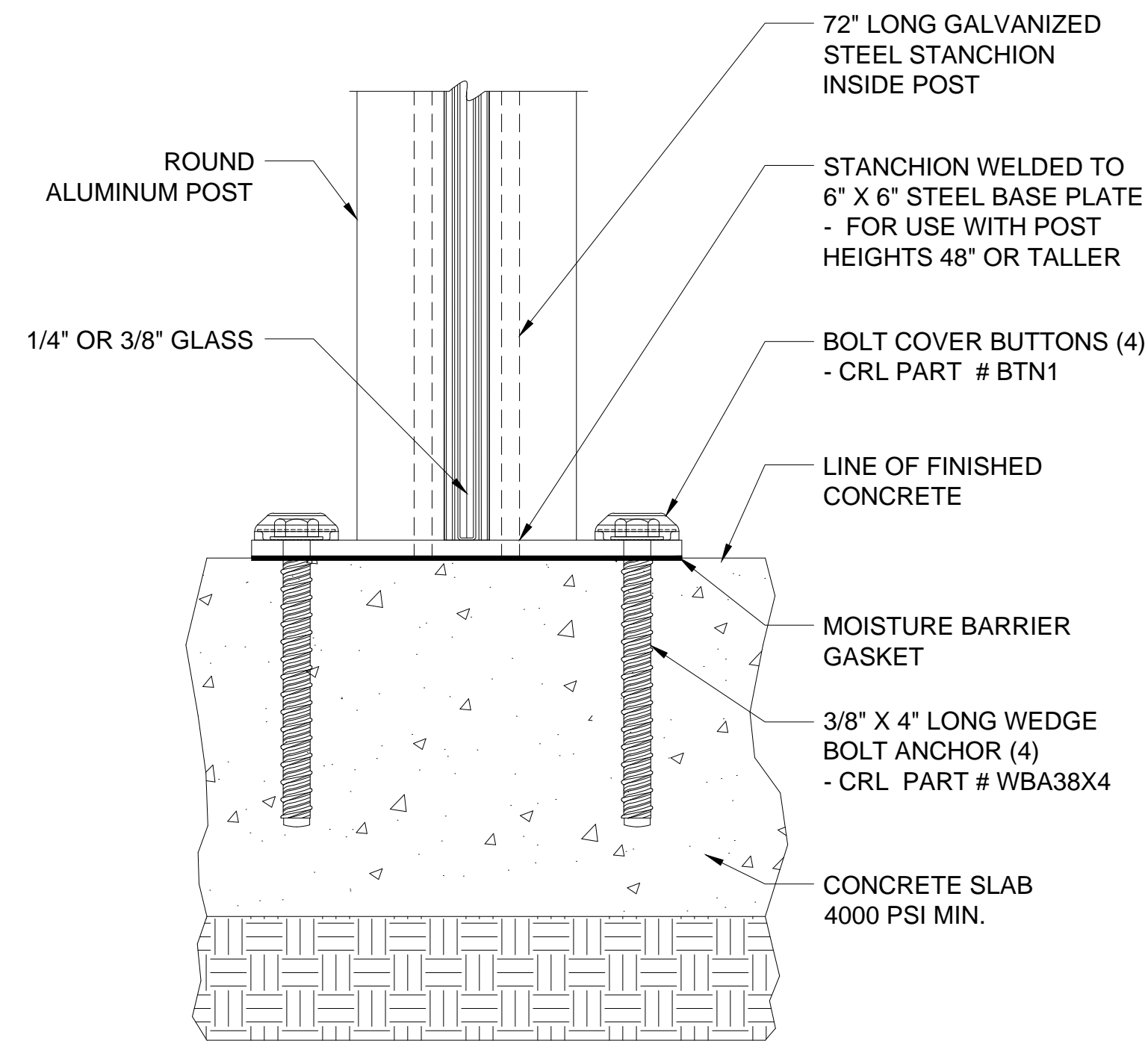
**5** TYPICAL SURFACE MOUNT DETAIL FOR WOOD SUBSTRATE

SPACING WILL DEPEND ON MOUNTING SUBSTRATE AND REGION OF PROJECT SEE PAGE 6 FOR STANCHION LENGTHS SCALE: 6"=1'-0"



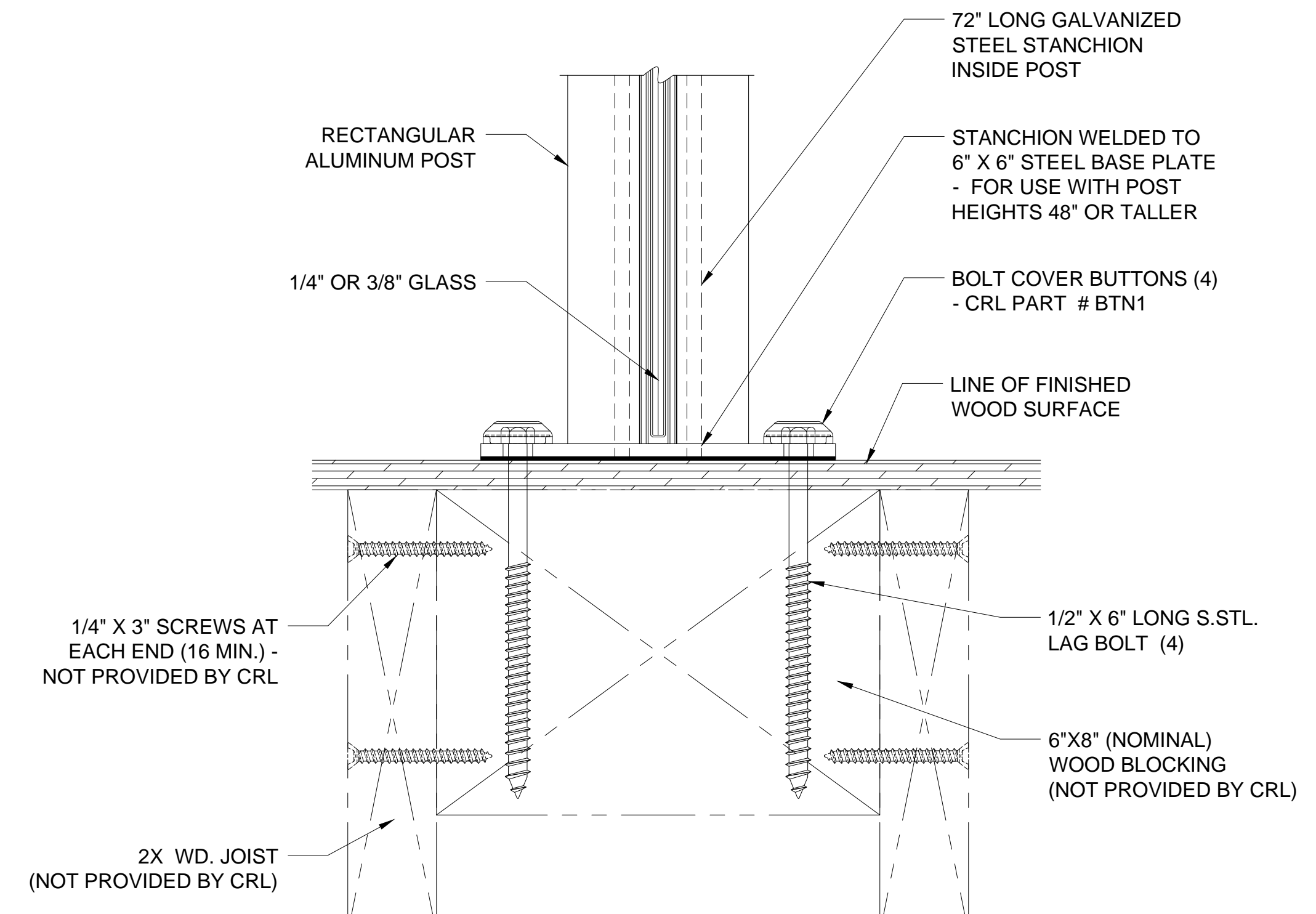
**2** TYPICAL CORE MOUNT DETAIL FOR CMU BLOCK WALL SUBSTRATE

SPACING WILL DEPEND ON MOUNTING SUBSTRATE AND REGION OF PROJECT SEE PAGE 6 FOR STANCHION LENGTHS SCALE: 6"=1'-0"



**4** TYPICAL SURFACE MOUNT DETAIL FOR CONCRETE SUBSTRATE

SPACING WILL DEPEND ON MOUNTING SUBSTRATE AND REGION OF PROJECT SEE PAGE 6 FOR STANCHION LENGTHS SCALE: 6"=1'-0"



**6** TYPICAL SURFACE MOUNT DETAIL FOR WOOD SUBSTRATE

SPACING WILL DEPEND ON MOUNTING SUBSTRATE AND REGION OF PROJECT SEE PAGE 6 FOR STANCHION LENGTHS SCALE: 6"=1'-0"

Revisions By:



Discription:  
CRL / AWS  
ALUMINUM ROUND  
POST GLASS WINDSCREEN  
SYSTEM

Drawn By: RPD  
Date: 01/27/14  
Scale: AS NOTED  
File Name: CRL-AWS-RndPGW SYS.dwg

Sheet

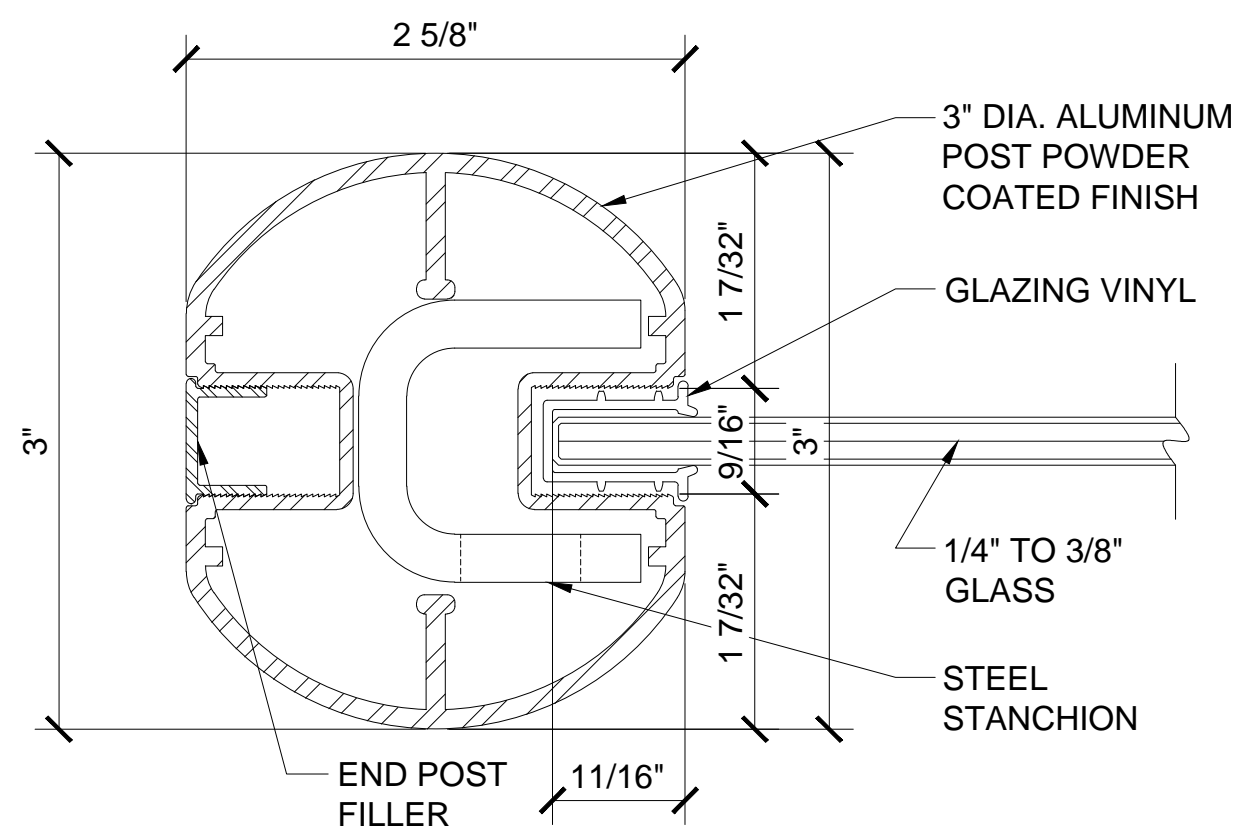
**4**



# CRL AWS - ALUMINUM WINDSCREEN SYSTEM

AVAILABLE POST CONFIGURATIONS & ACCESSORIES FOR ROUND POSTS

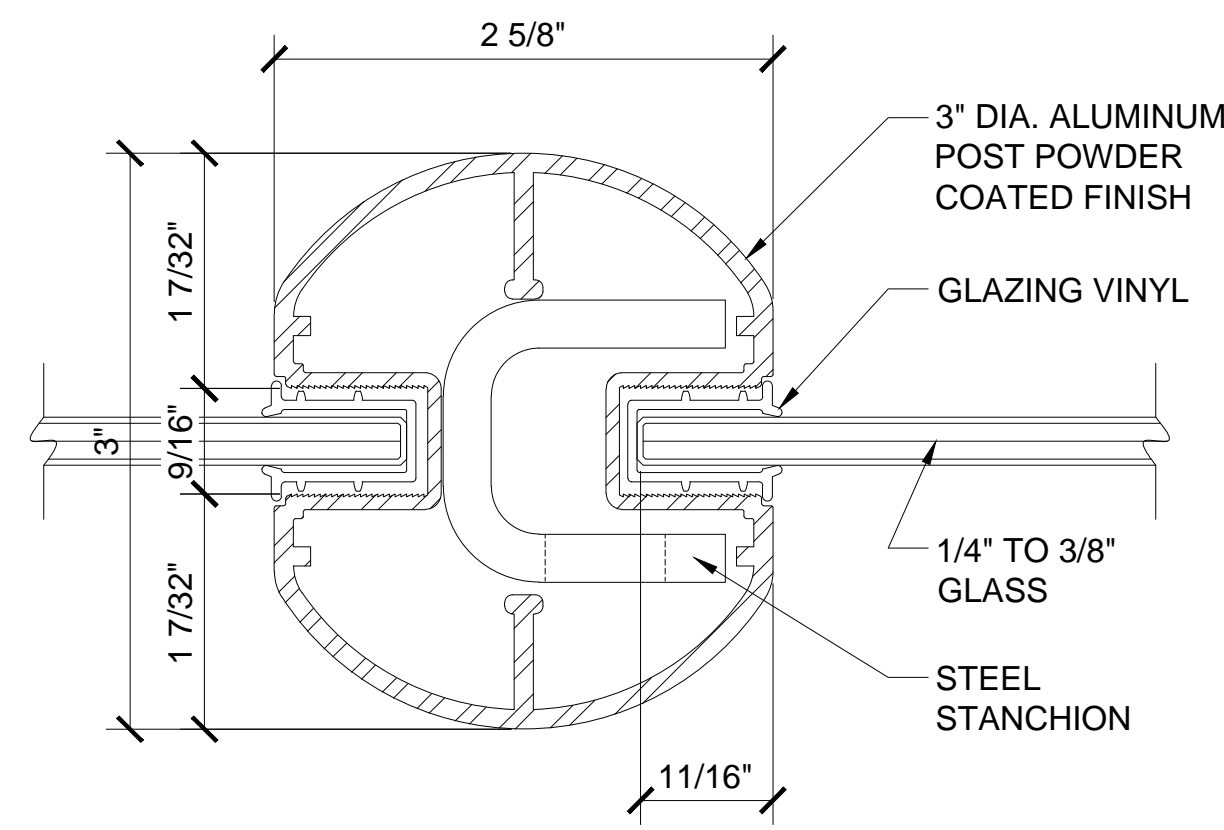
\* STEEL STANCHIONS, FILLERS & KITS SOLD SEPARATELY  
 \*\* STANDARD KIT INCLUDE POST, TOP CAP, & VINYL



**1** CRL AWS 3" Ø ROUND 180° END POST - ALUMINUM \*

SCALE: FULL SIZE

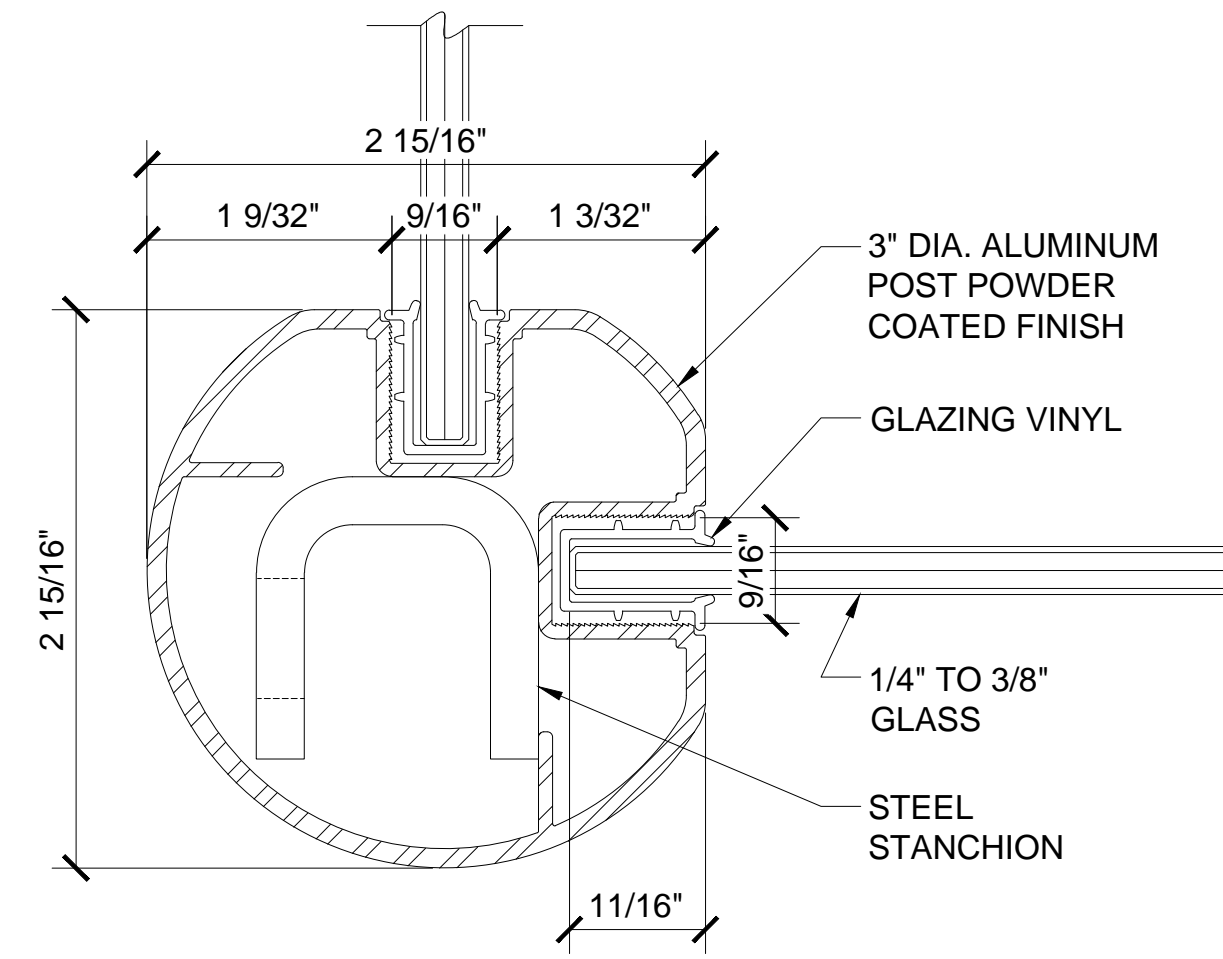
CAT. #	LENGTH	w/ KIT **
RP36	36" (914 mm)	R36EK
RP48	48" (1219 mm)	R48EK
RP60	60" (1524 mm)	R60EK
RP72	72" (1829 mm)	R72EK
RP194	241" (6.12 m) #	



**2** CRL AWS 3" Ø ROUND 180° CENTER POST - ALUMINUM \*

SCALE: FULL SIZE

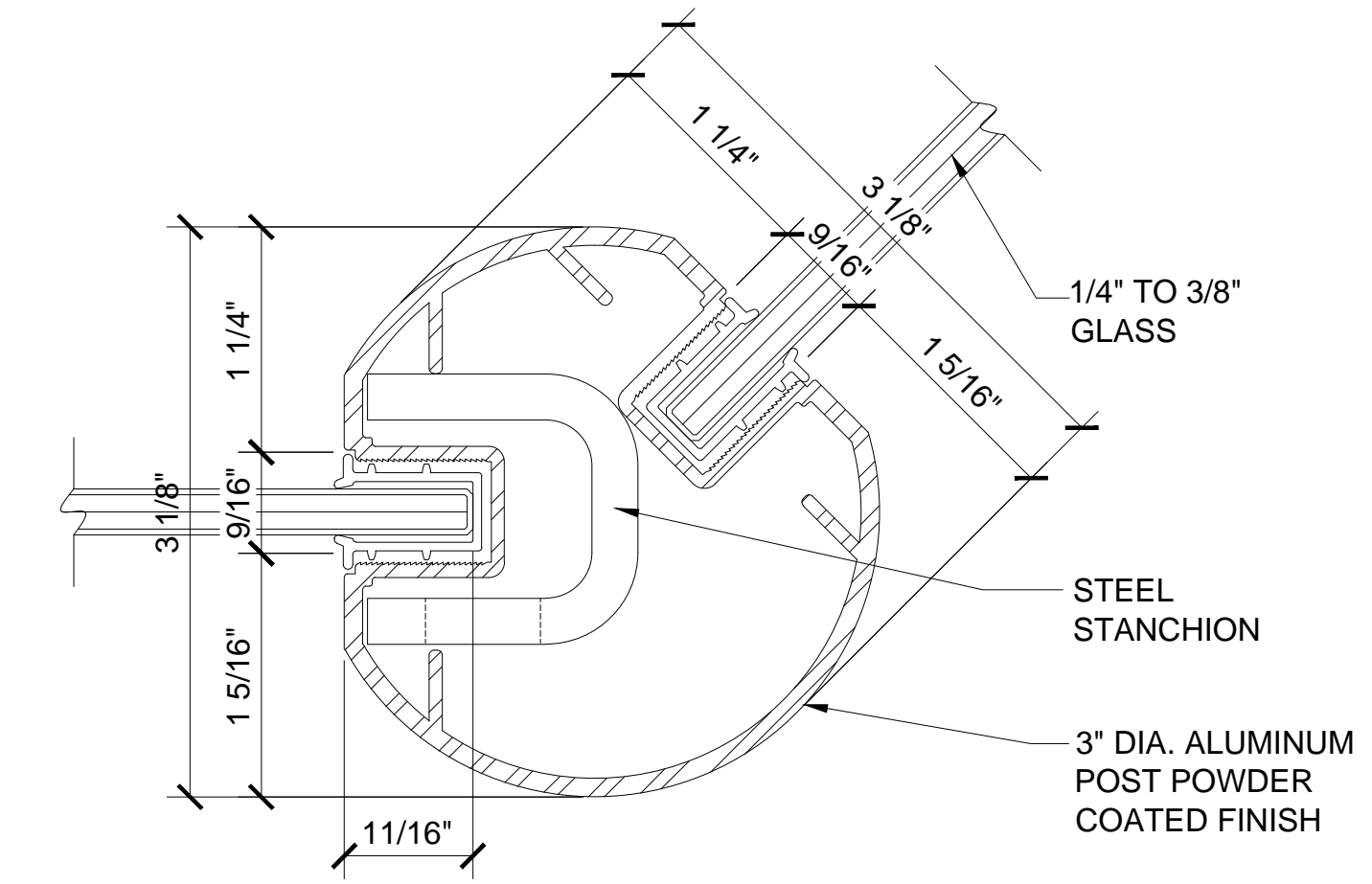
CAT. #	LENGTH	w/ KIT **
RP36	36" (914 mm)	R36CK
RP48	48" (1219 mm)	R48CK
RP60	60" (1524 mm)	R60CK
RP72	72" (1829 mm)	R72CK
RP194	241" (6.12 m) #	



**3** CRL AWS 3" Ø ROUND 90° CORNER POST - ALUMINUM \*

SCALE: FULL SIZE

CAT. #	LENGTH	w/ KIT **
RP936	36" (914 mm)	R36CRK
RP948	48" (1219 mm)	R48CRK
RP960	60" (1524 mm)	R60CRK
RP972	72" (1829 mm)	R72CRK
RP9194	241" (6.12 m) #	



**4** CRL AWS 3" Ø ROUND 135° CORNER POST - ALUMINUM \*

SCALE: FULL SIZE

CAT. #	LENGTH	w/ KIT **
RP536	36" (914 mm)	R365K
RP548	48" (1219 mm)	R485K
RP560	60" (1524 mm)	R605K
RP572	72" (1829 mm)	R725K
RP5241	241" (6.12 m) #	

CAT. #	COLOR
BRGLSW	SKY WHITE
BRGLSOW	OYSTER WHITE
BRGLSAGY	AGATE GRAY
BRGLSBGY	BEIGE GRAY
BRGLSBL	MATTE BLACK
BRGLSBRZ	MATTE BRONZE
BRGLSS	SILVER METALLIC
BRGLSCRM	CHROMATE

STOCK LENGTH = 20'-1" (6.12 M)

**5** CRL INTERMEDIATE BOTTOM GLASS RAIL

SCALE: FULL SIZE

CAT. #	COLOR
BRF241W	SKY WHITE
BRF241OW	OYSTER WHITE
BRF241AGY	AGATE GRAY
BRF241BGY	BEIGE GRAY
BRF241BL	MATTE BLACK
BRF241BRZ	MATTE BRONZE
BRF241S	SILVER METALLIC
BRF241CRM	CHROMATE

STOCK LENGTH = 20'-1" (6.12 M)

**6** CRL STANDARD BOTTOM RAIL FILLER

SCALE: FULL SIZE

CAT. #	LENGTH
BR36K	36" (914 mm)
BR48K	48" (1219 mm)
BR60K	60" (1524 mm)
BR72K	72" (1829 mm)
BR194	241" (6.12 m) #

**7** CRL AWS BOTTOM RAIL

SCALE: FULL SIZE

CAT. #	LENGTH
RCB2	1" (25.4 mm)
RCB212	12" (305 mm)
RCB2241	241" (61.12 mm) #

**8** CRL RAIL CONNECTING BLOCKS

SCALE: FULL SIZE

CAT. #	LENGTH
PF36	36" (914 mm)
PF48	48" (1219 mm)
PF60	60" (1524 mm)
PF72	72" (1829 mm)
PF194	241" (6.12 m) #

**9** CRL AWS POST POCKET FILLERS

SCALE: FULL SIZE

CAT. #	COLOR
BTN1W	SKY WHITE
BTN1OW	OYSTER WHITE
BTN1AGY	AGATE GRAY
BTN1BGY	BEIGE GRAY
BTN1BL	MATTE BLACK
BTN1BRZ	MATTE BRONZE
BTN1DS	DARK SILVER

**10** CRL COLOR MATCH BOLT COVER BUTTONS

SCALE: FULL SIZE

CAT. #	DIAMETER
WSHR1	1" (25.4 mm)

HOLE	THICKNESS
7/16" (11.1 mm)	1/8" (3.2 mm)

**11** CRL S.STL. BUTTON WASHER

SCALE: FULL SIZE

CAT. #	DESCRIPTION
14BV	FOR 1/4" (6 mm) thk. GLASS
38BV	FOR 3/8" (10 mm) thk. GLASS

NOTES: 1/2" (12 mm) thk. GLASS MUST BE WET GLAZED  
 STOCK LENGTH = 12' (3.66 M)

**12** CRL BOTTOM RIGID GLAZING VINYL

SCALE: FULL SIZE

CAT. #	LENGTH
GV36BL	36" (914 mm)
GV48BL	48" (1219 mm)
GV60BL	60" (1524 mm)
GV72BL	72" (1829 mm)
GV120BL	144" (3.66 m) #

NOTE: 1/2" (12 mm) thk. GLASS MUST BE WET GLAZED

**13** CRL AWS RIGID GLAZING VINYL

SCALE: FULL SIZE

CAT. #	THICKNESS
WPSB1	1/2" (12.7 mm)

WIDTH	LENGTH
3/4" (19 mm)	24" (610 mm)

**14** CRL GLASS POCKET SETTING BLOCK FOR WINDSCREEN POSTS

SCALE: FULL SIZE

Revisions By:

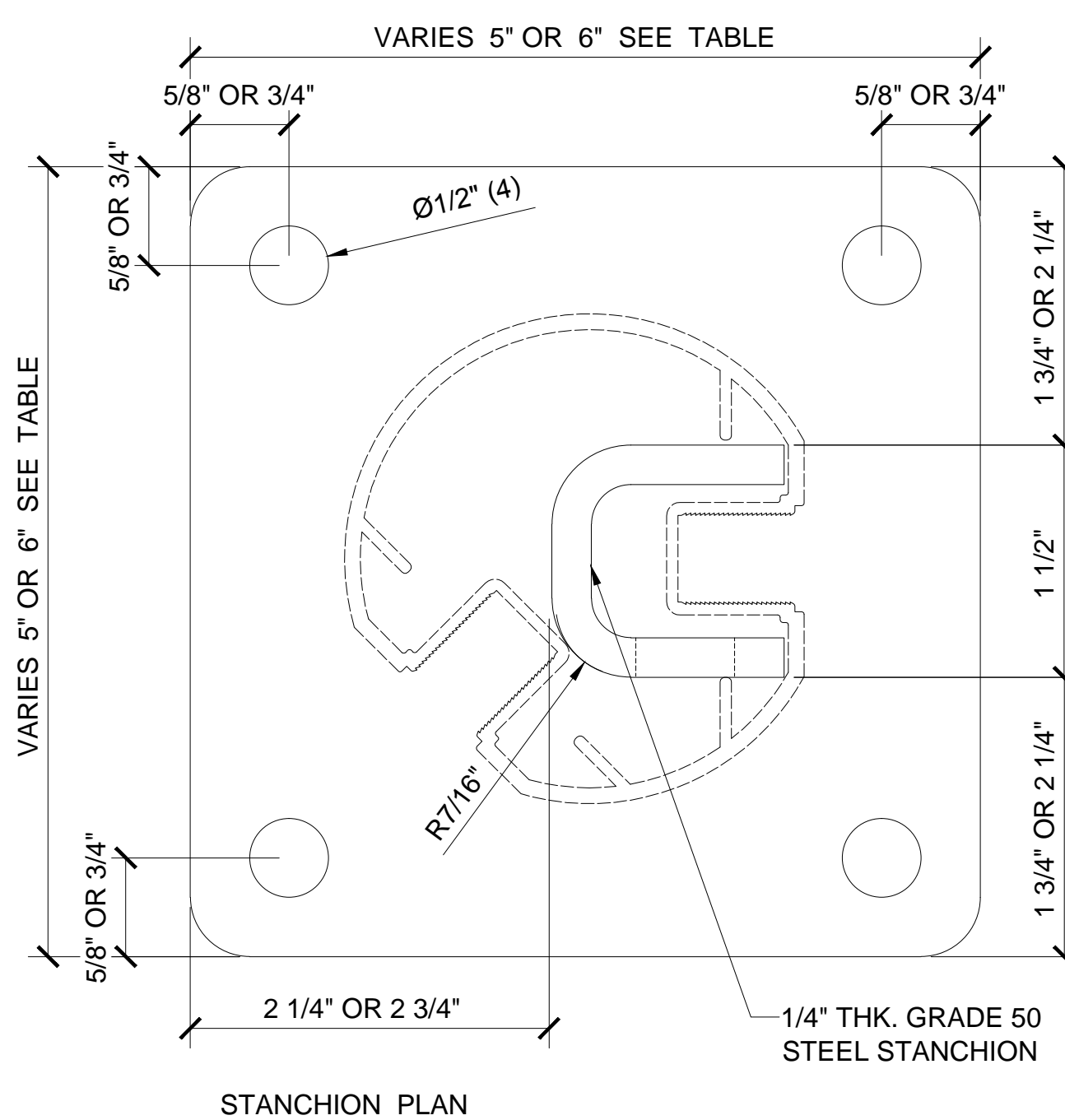
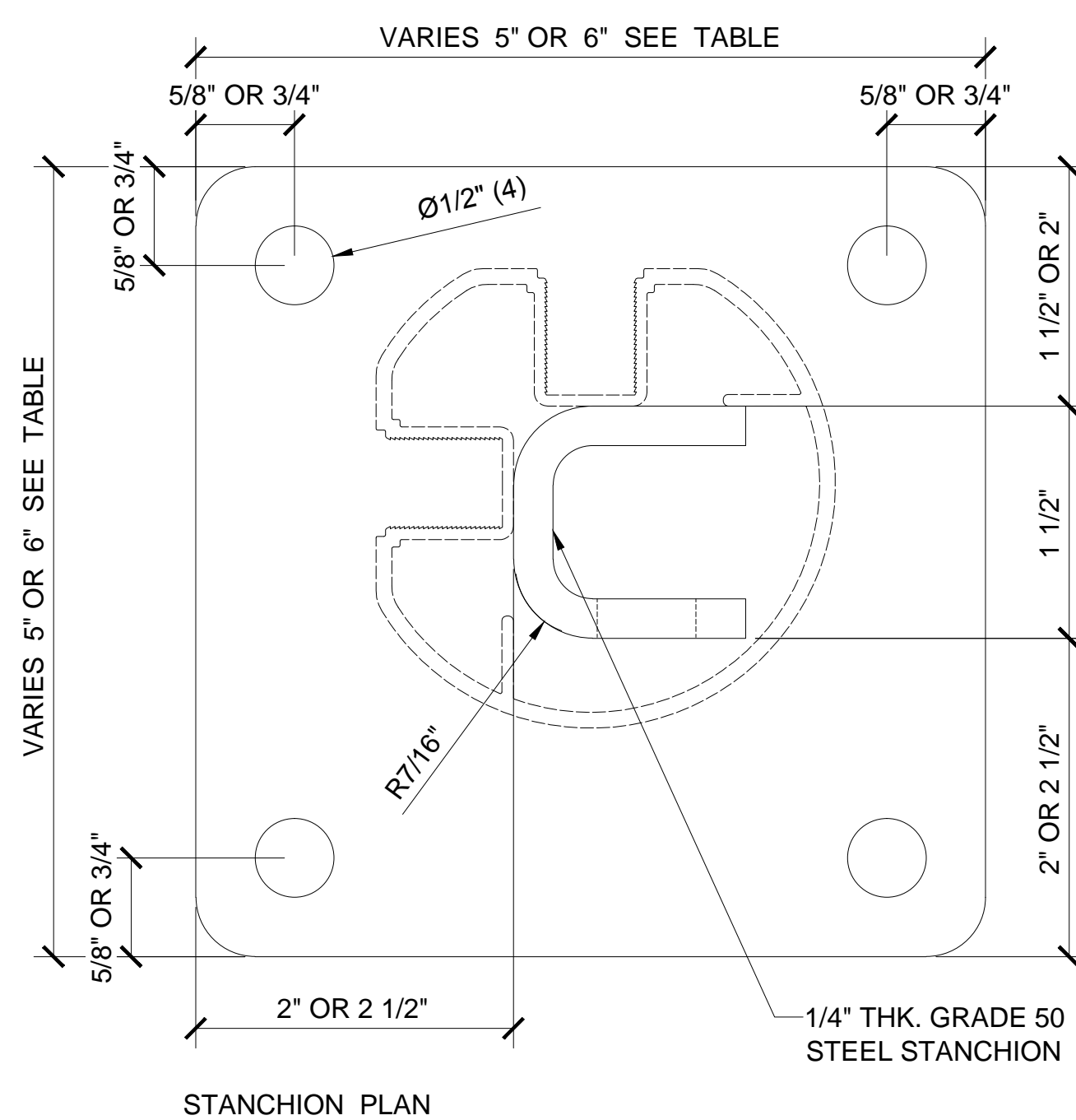
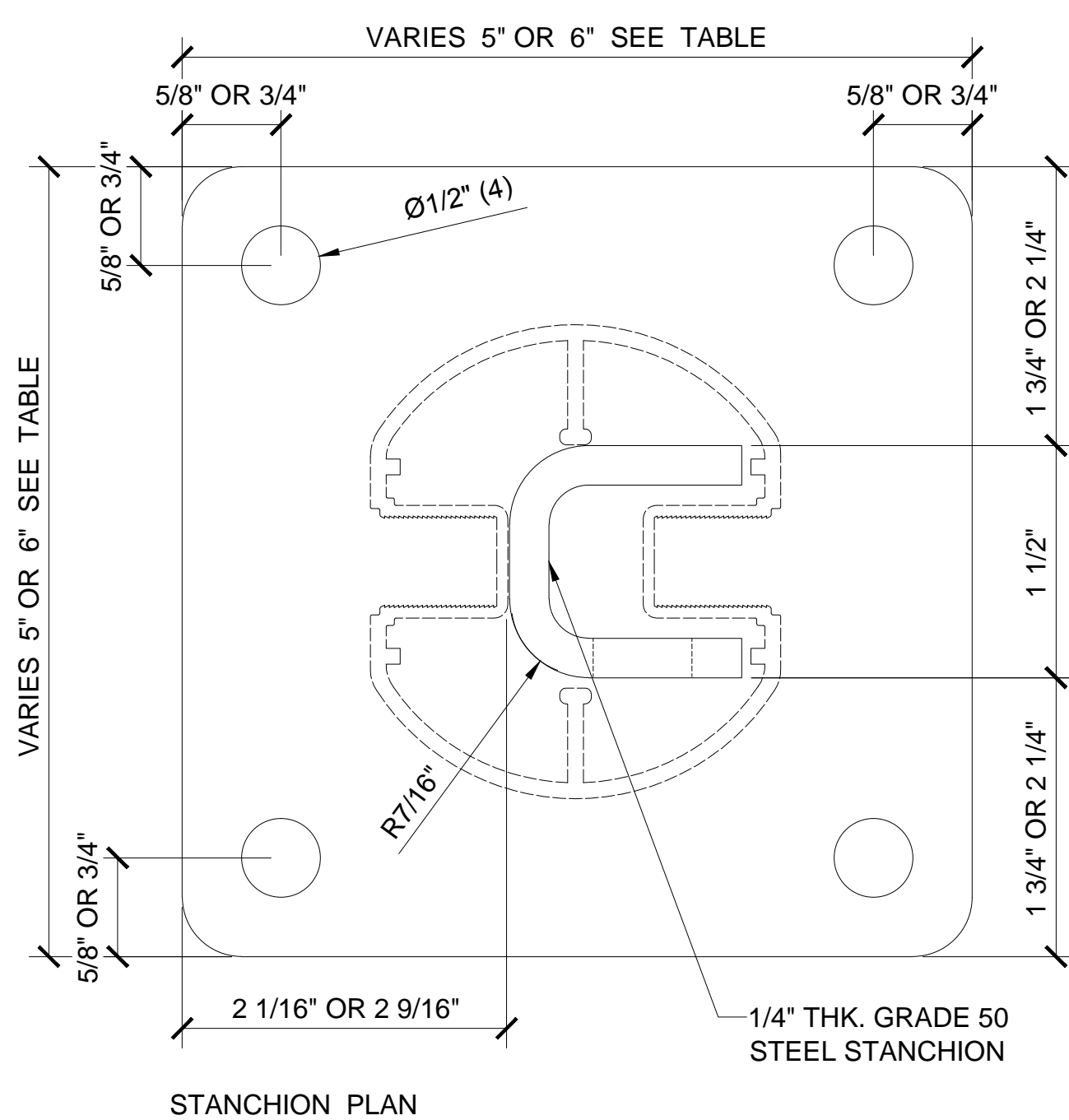
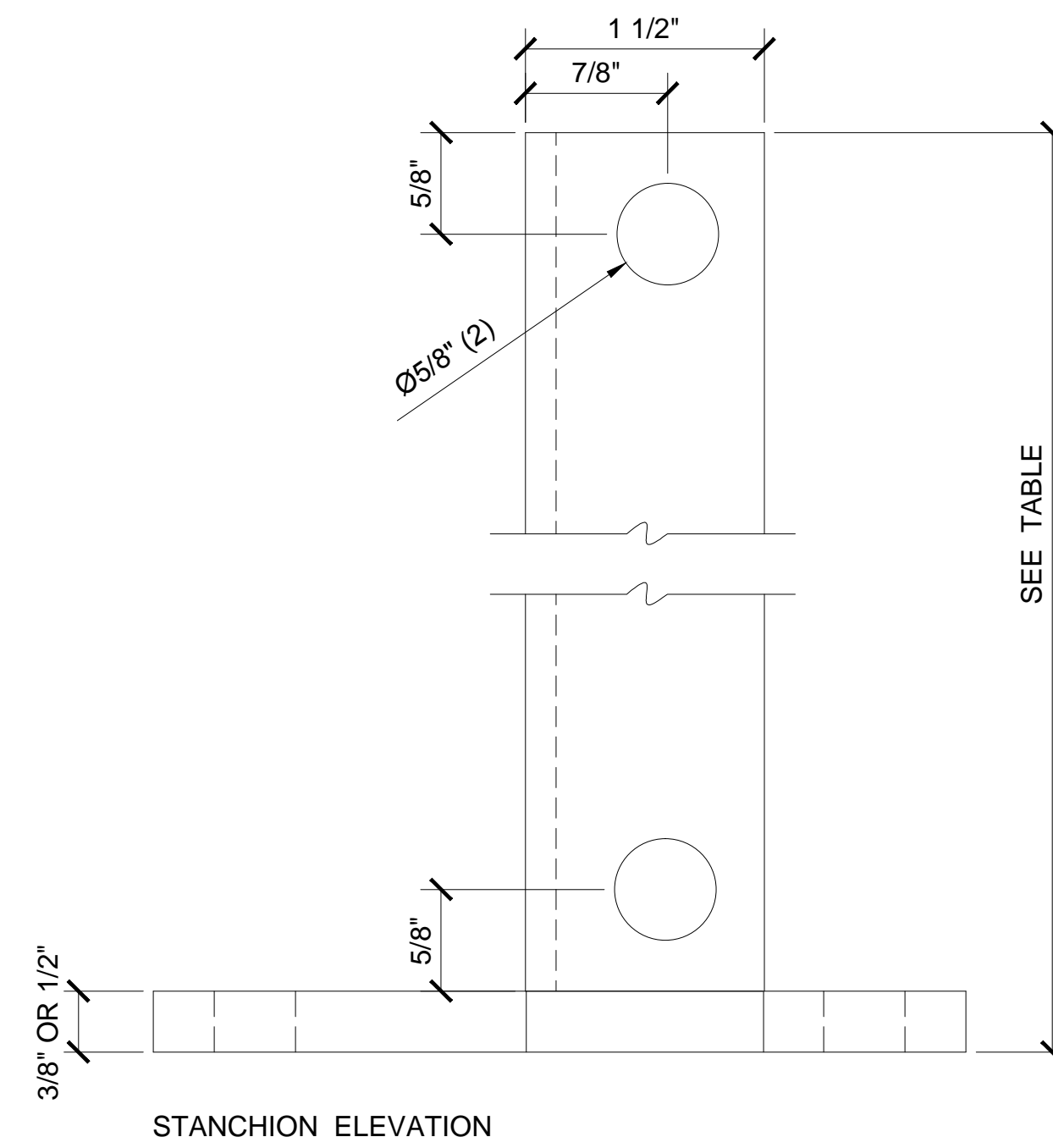
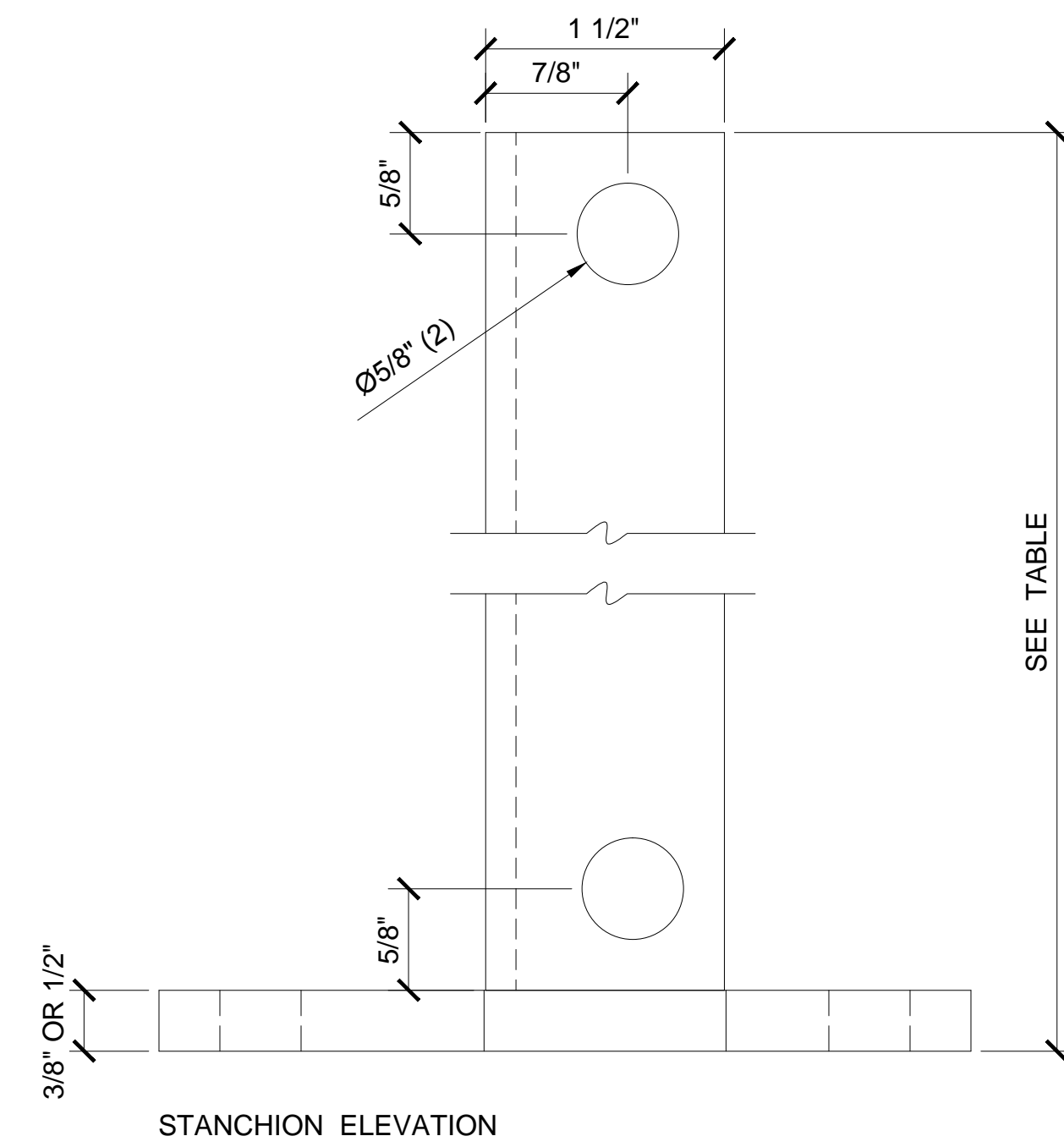
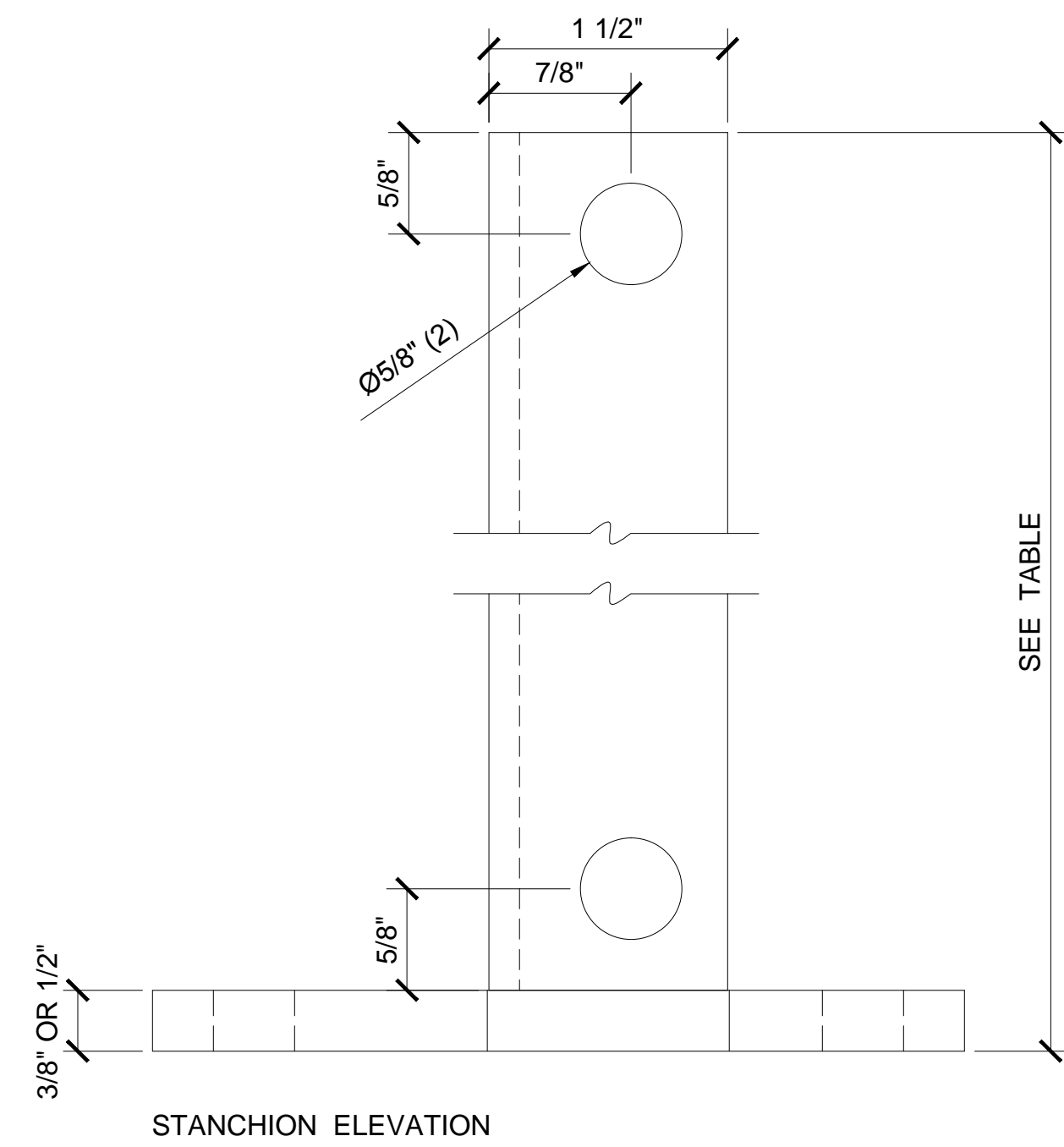


Discription:  
 CRL / AWS  
 ALUMINUM ROUND  
 POST GLASS WINDSCREEN  
 SYSTEM

Drawn By: RPD  
 Date: 01/27/14  
 Scale: AS NOTED  
 File Name: CRL-AWS-RndPGW SYS.dwg

# CRL AWS - ALUMINUM WINDSCREEN SYSTEM

TYPICAL AWS ATTACHMENTS - WELDED STEEL (GRADE 50) SURFACE MOUNT / CORE MOUNT STANCHIONS FOR ROUND POSTS



**WELDED STEEL STANCHION FOR 180° ROUND CENTER OR END POST**

1 SCALE: FULL SIZE

**WELDED STEEL STANCHION FOR 90° RECTANGULAR CORNER POST**

2 SCALE: FULL SIZE

**WELDED STEEL STANCHION FOR 135° RECTANGULAR CORNER POST**

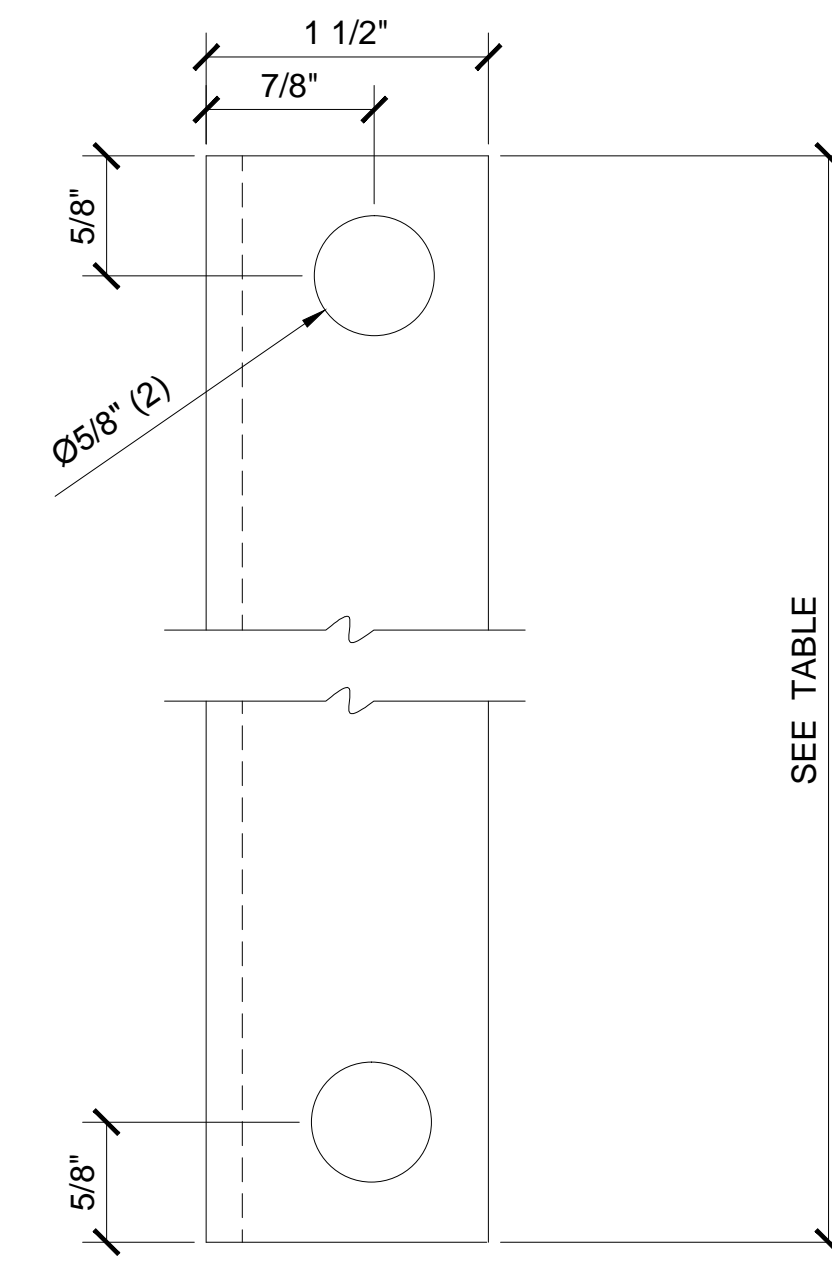
3 SCALE: FULL SIZE

CAT. #	LENGTH	FOR POST HEIGHT	SIZE***
PSB1A	12" (305 mm)	UP TO 24" (610 mm)	5"X5"X3/8" THK.
PSB1B	30" (762 mm)	UP TO 48" (1219 mm)	5"X5"X3/8" THK.
PSB1C	30" (762 mm)	UP TO 72" (1829 mm)	6"X6"X1/2" THK.

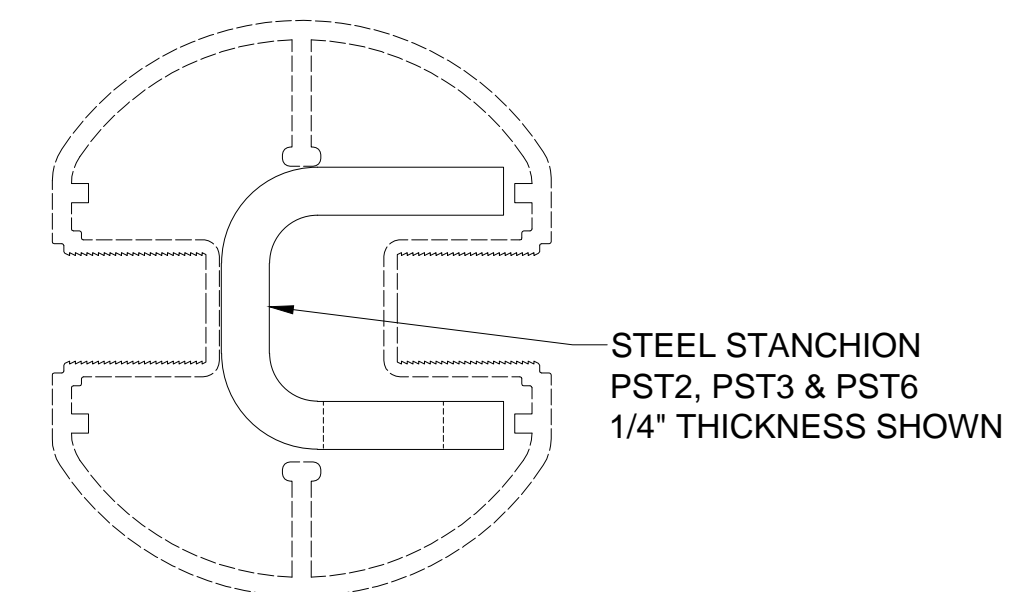
CAT. #	LENGTH	FOR POST HEIGHT	SIZE***
PSB2A	12" (305 mm)	UP TO 24" (610 mm)	5"X5"X3/8" THK.
PSB2B	30" (762 mm)	UP TO 48" (1219 mm)	5"X5"X3/8" THK.
PSB2C	30" (762 mm)	UP TO 72" (1829 mm)	6"X6"X1/2" THK.

CAT. #	LENGTH	FOR POST HEIGHT	SIZE***
PSB4A	12" (305 mm)	UP TO 24" (610 mm)	5"X5"X3/8" THK.
PSB4B	30" (762 mm)	UP TO 48" (1219 mm)	5"X5"X3/8" THK.
PSB4C	30" (762 mm)	UP TO 72" (1829 mm)	6"X6"X1/2" THK.

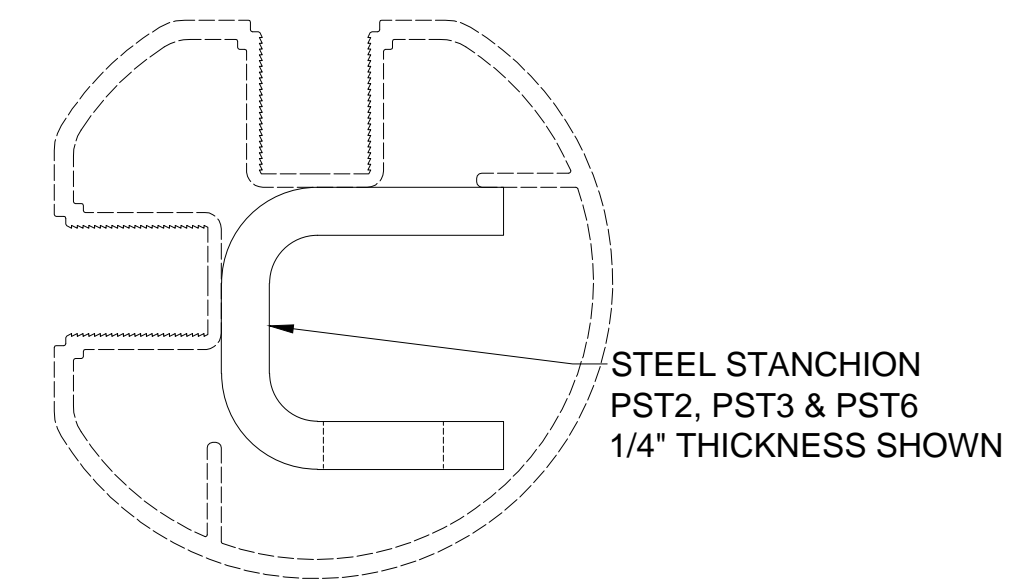
\*\*\* 5" X 5" (127 X 127 mm) X 3/8" (9.5 mm) THK.  
6" X 6" (152 X 152 mm) X 1/2" (12.7 mm) THK.



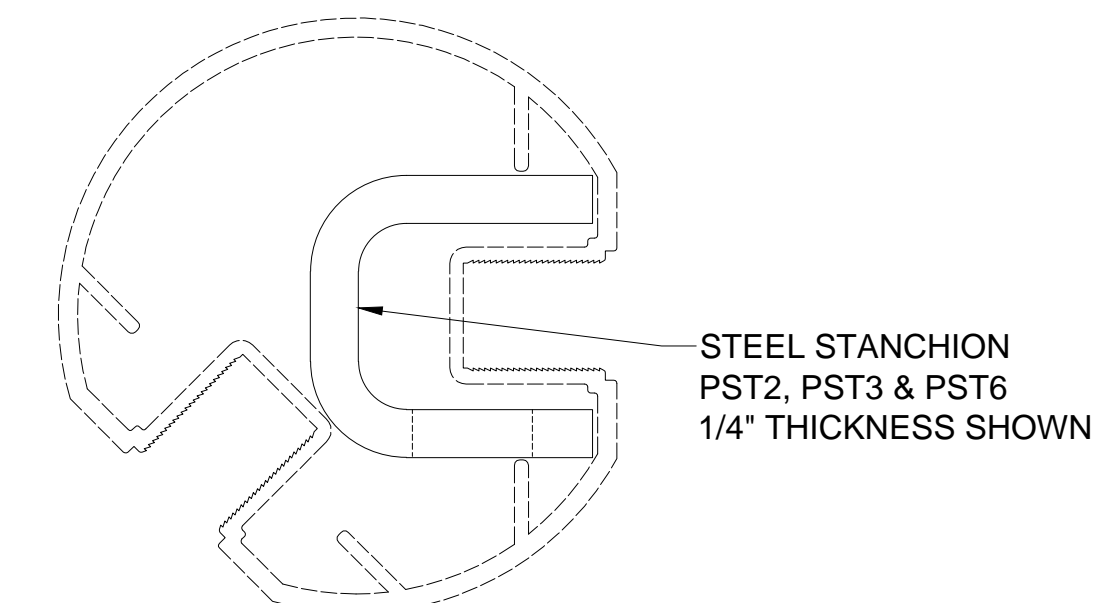
STANCHION ELEVATION



STANCHION PLAN FOR 180° CENTER OR END POST



STANCHION PLAN FOR 90° CORNER POST



STANCHION PLAN FOR 135° CORNER POST

**STEEL STANCHION FOR CORE MOUNT POSTS**

4 SCALE: FULL SIZE

CAT. #	HEIGHT	DESCRIPTION	FOR POST HEIGHT	THICKNESS / GAUGE
PST1	18" (457 mm)	GRADE 50 STEEL	UP TO 36" (914 mm)	1/8" (3.2 mm) THK.
PST2	18" (457 mm)	GRADE 50 STEEL	UP TO 48" (1219 mm)	1/4" (6.3 mm) THK.
PST3	30" (762 mm)	GRADE 50 STEEL	UP TO 72" (1829 mm)	1/4" (6.3 mm) THK.
PST4	30" (762 mm)	304 GRADE S.STL.	UP TO 72" (1829 mm)	1/8" (3.2 mm) THK.
PST6	42" (1067 mm)	GRADE 50 STEEL	SPECIAL CONDITIONS	1/4" (6.3 mm) THK.

Revisions By:



Discription:  
CRL / AWS  
ALUMINUM ROUND  
POST GLASS WINDSCREEN  
SYSTEM

Drawn By: RPD  
Date: 01/27/14  
Scale: AS NOTED  
File Name: CRL-AWS-RndPGW SYS.dwg

Sheet

6