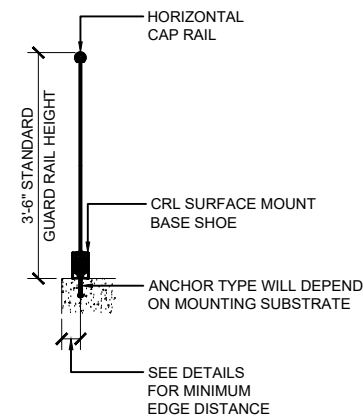
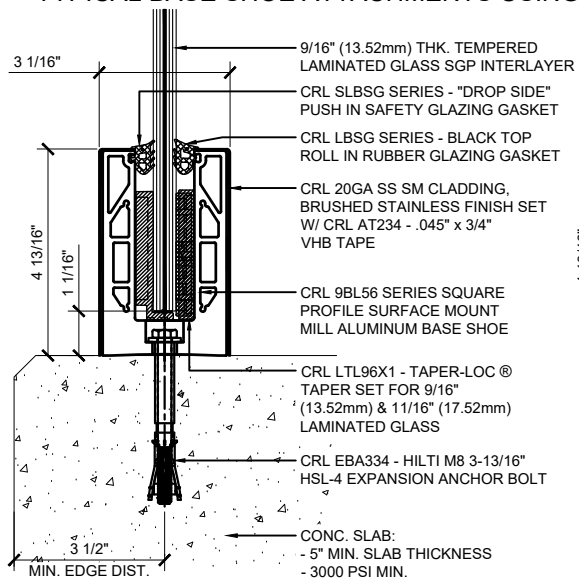


TYPICAL GRS LAMINATED GLASS RAILING ELEVATION VIEW - SURFACE MOUNT



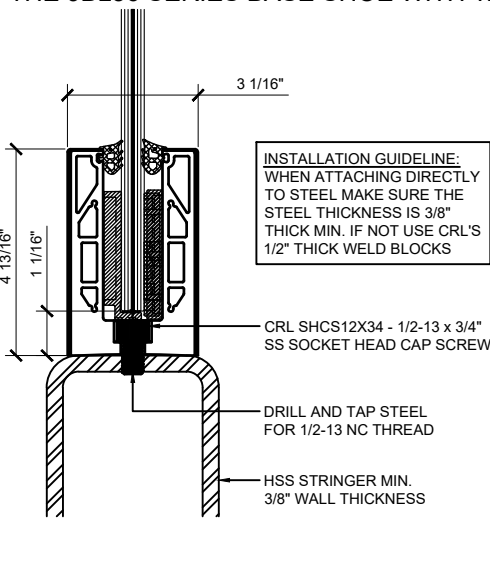
TYPICAL GRS LAMINATED GLASS RAILING ELEVATION VIEW - FASCIA MOUNT

TYPICAL BASE SHOE ATTACHMENTS USING THE 9BL56 SERIES BASE SHOE WITH TAPER-LOC® SYSTEM



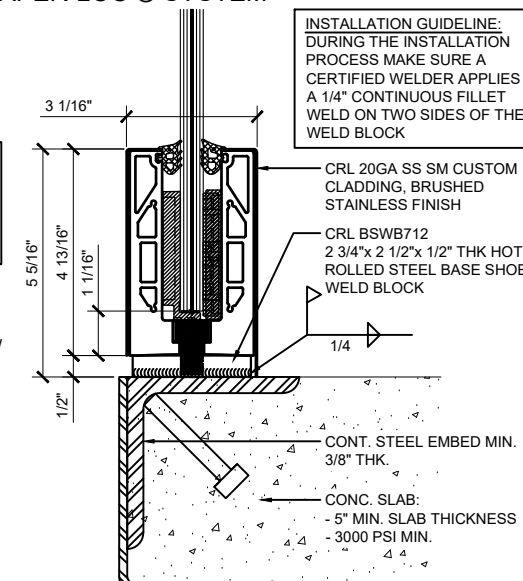
SURFACE MOUNT DETAIL CONCRETE SUBSTRATE

ANCHOR SPACING WILL DEPEND ON MOUNTING SUBSTRATE AND REGION OF PROJECT
12\"/>



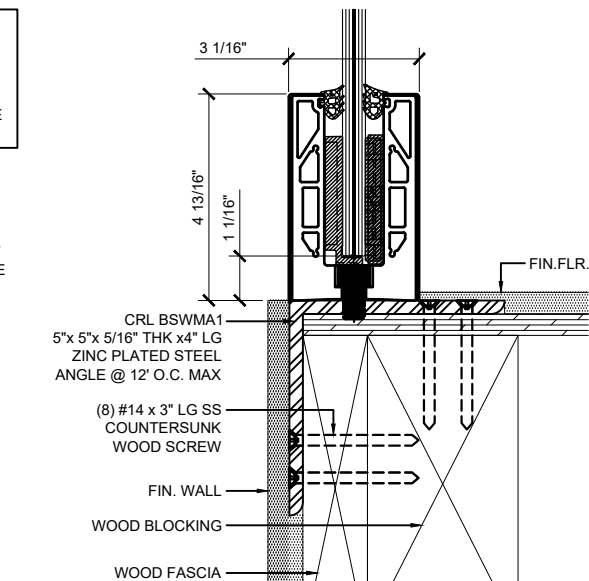
SURFACE MOUNT DETAIL STEEL SUBSTRATE

12\"/>



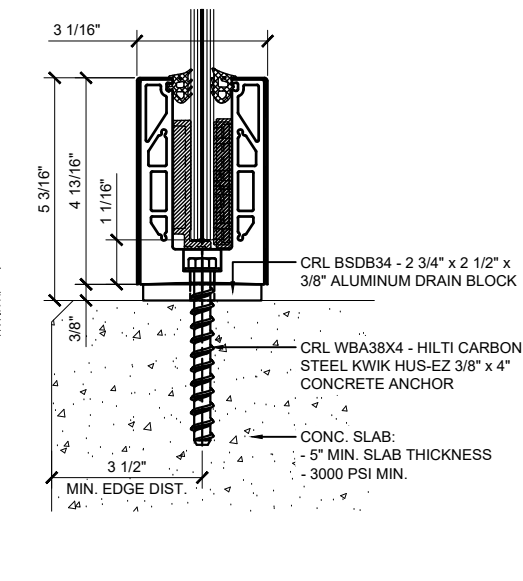
SURFACE MOUNT DETAIL STEEL SUBSTRATE W/ WELD BLOCK

12\"/>



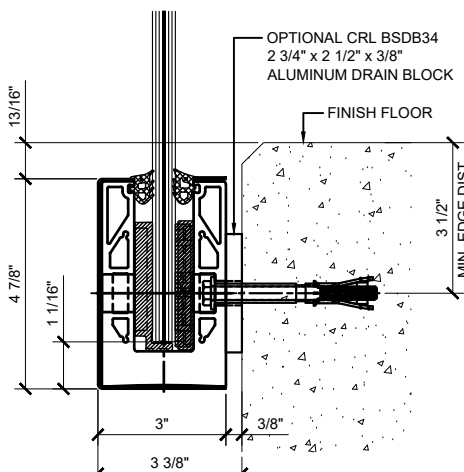
SURFACE MOUNT DETAIL WOOD SUBSTRATE

12\"/>



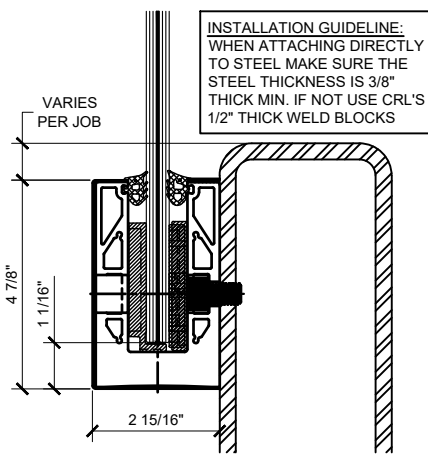
SURFACE MOUNT DETAIL CONCRETE SUBSTRATE W/ DRAIN BLOCK

ANCHOR SPACING WILL DEPEND ON MOUNTING SUBSTRATE AND REGION OF PROJECT
12\"/>



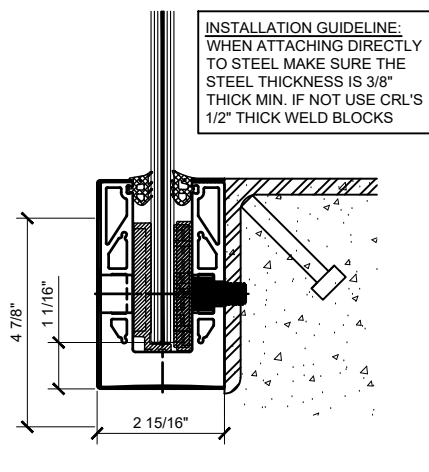
FASCIA MOUNT DETAIL CONCRETE SUBSTRATE

ANCHOR SPACING WILL DEPEND ON MOUNTING SUBSTRATE AND REGION OF PROJECT
12\"/>



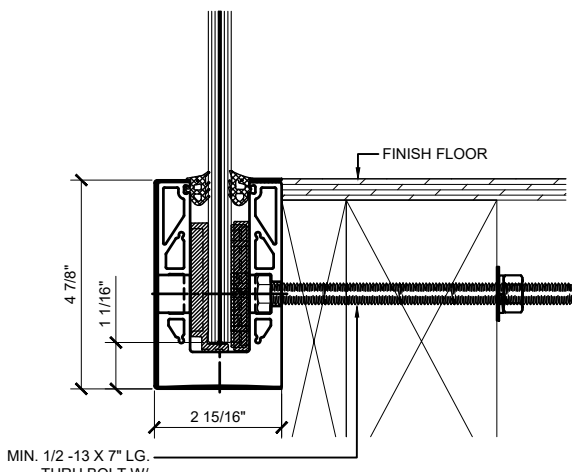
FASCIA MOUNT DETAIL STEEL SUBSTRATE

12\"/>



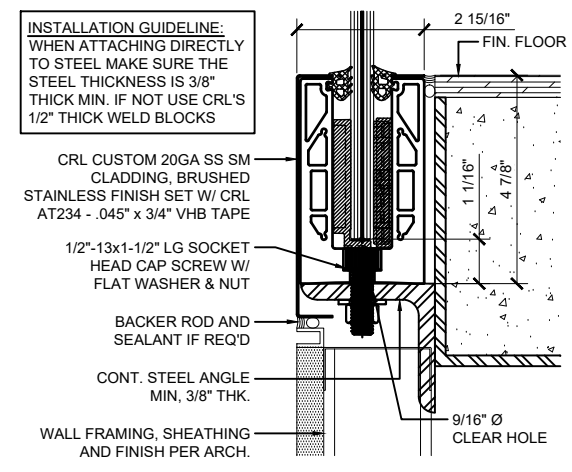
FASCIA MOUNT DETAIL STEEL SUBSTRATE

12\"/>



FASCIA MOUNT DETAIL WOOD SUBSTRATE

ANCHOR SPACING WILL DEPEND ON MOUNTING SUBSTRATE AND REGION OF PROJECT
12\"/>



SURFACE MOUNT DETAIL STEEL SUBSTRATE W/ CUSTOM CLADDING

12\"/>

INSTALLATION GUIDELINE:
DURING THE INSTALLATION PROCESS MAKE SURE A CERTIFIED WELDER APPLIES A 1/4\"/>

INSTALLATION GUIDELINE:
WHEN ATTACHING DIRECTLY TO STEEL MAKE SURE THE STEEL THICKNESS IS 3/8\"/>

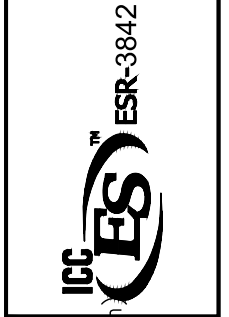
INSTALLATION GUIDELINE:
WHEN ATTACHING DIRECTLY TO STEEL MAKE SURE THE STEEL THICKNESS IS 3/8\"/>

INSTALLATION GUIDELINE:
WHEN ATTACHING DIRECTLY TO STEEL MAKE SURE THE STEEL THICKNESS IS 3/8\"/>

INSTALLATION GUIDELINE:
WHEN ATTACHING DIRECTLY TO STEEL MAKE SURE THE STEEL THICKNESS IS 3/8\"/>

Revisions By:	
△	-
△	-
△	-
△	03-07-22 RPD

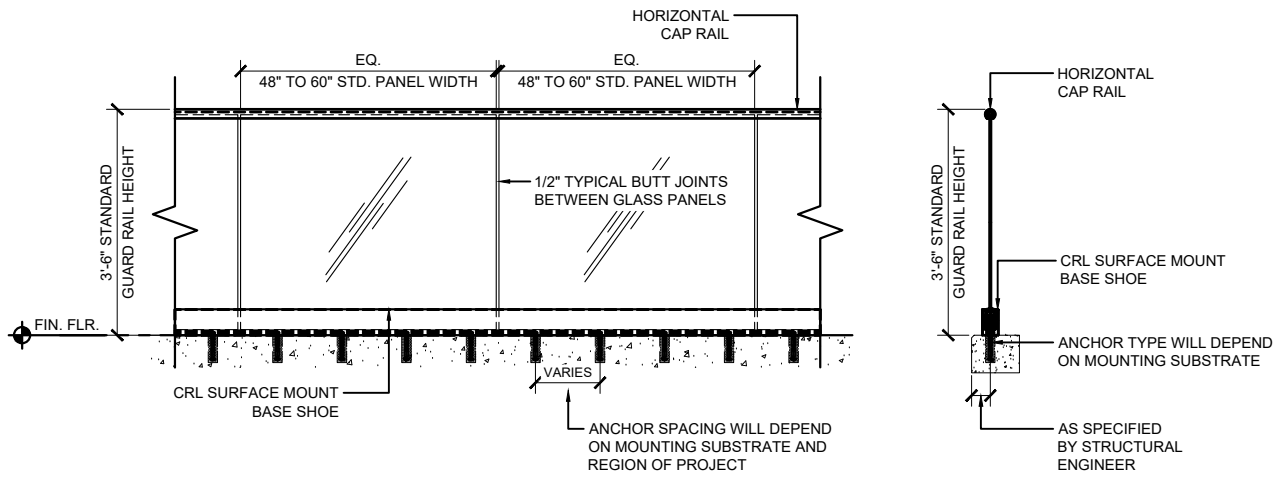
CRL
C.R. LAURENCE CO. ARCHITECTURAL PRODUCTS
13500 W. 14th St., Suite 100, Los Angeles, CA 90058-1887
PH: (800) 421-6144 FAX: 800-567-7501 www.crlaurence.com



Description:
GRS GLASS RAILING SYSTEM FOR TEMPERED LAMINATED GLASS SURFACE MOUNT AND FASCIA MOUNT OPTIONS
9/16\"/>

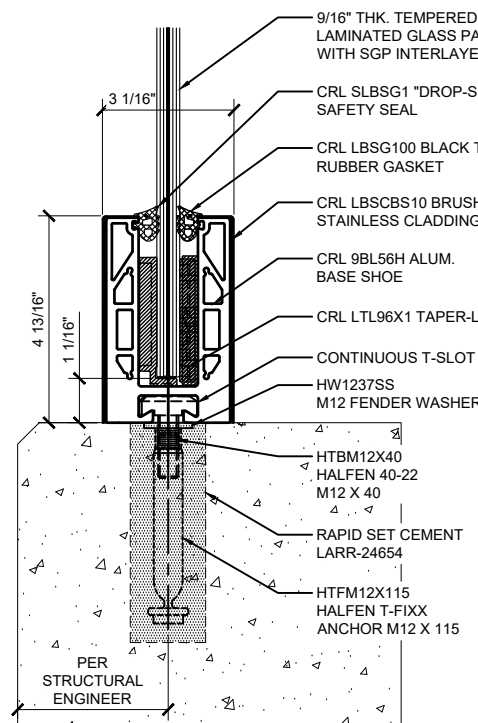
ELEVATIONS AND SECTIONS
SURFACE MOUNT AND FASCIA MOUNT OPTIONS

Drawn By: JG / RPD
Date: 12/03/2021
Scale: AS NOTED
File Name: CRL GRS Laminated Glass Railing System.dwg



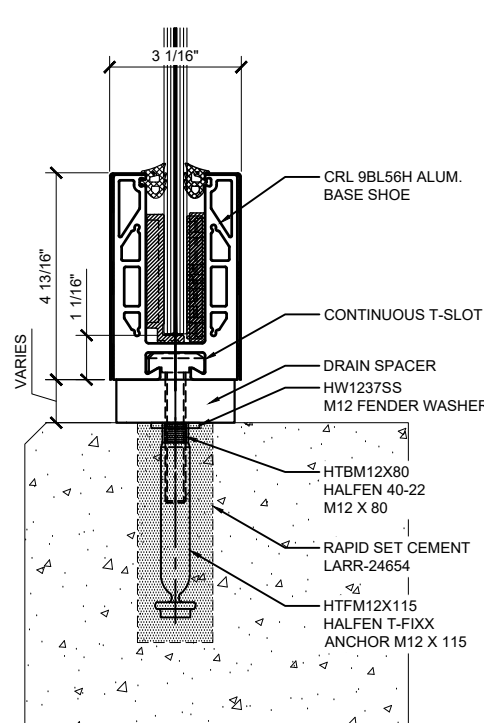
TYPICAL GRS LAMINATED GLASS RAILING ELEVATION VIEW - SURFACE MOUNT USING 9BL56H T-SLOT UNITIZED BASE SHOE

TYPICAL BASE SHOE ATTACHMENTS USING THE 9BL56H T-SLOT UNITIZED BASE SHOE SERIES WITH TAPER-LOC® SYSTEM



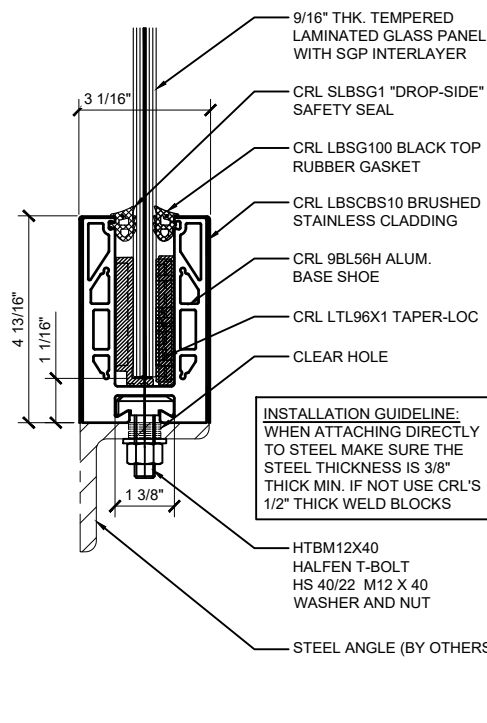
9BL56HM T-SLOT UNITIZED BASE SHOE SURFACE MOUNT DETAIL -UNDRILLED @ CONCRETE

ANCHOR SPACING WILL DEPEND ON MOUNTING SUBSTRATE AND REGION OF PROJECT
12" O.C. SPACING IS STANDARD



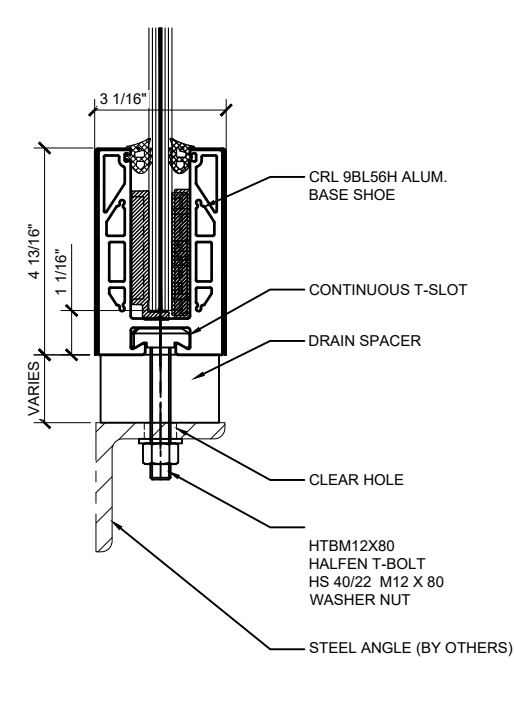
9BL56HM T-SLOT UNITIZED BASE SHOE SURFACE MOUNT DETAIL w/ DRAIN SPACER -UNDRILLED @ CONCRETE

ANCHOR SPACING WILL DEPEND ON MOUNTING SUBSTRATE AND REGION OF PROJECT
12" O.C. SPACING IS STANDARD



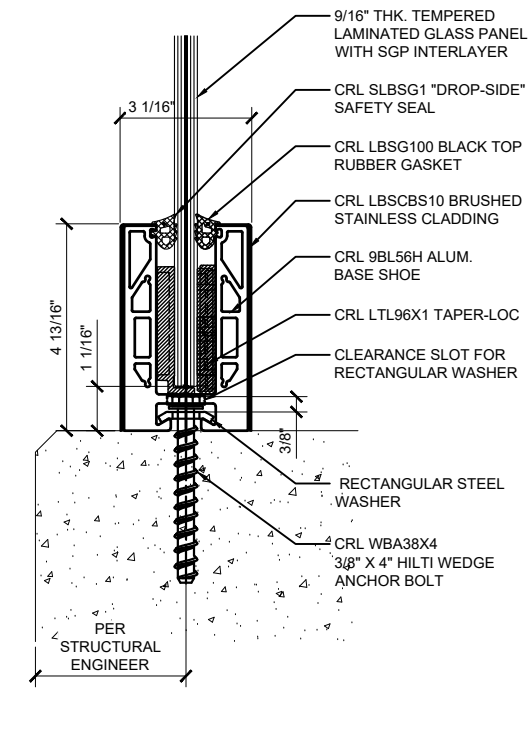
9BL56HM T-SLOT UNITIZED BASE SHOE SURFACE MOUNT DETAIL -UNDRILLED @ STRUCTURAL STEEL

12" ON CENTER ANCHOR SPACING



9BL56HM T-SLOT UNITIZED BASE SHOE SURFACE MOUNT DETAIL w/ DRAIN SPACER -UNDRILLED @ STRUCTURAL STEEL

12" ON CENTER ANCHOR SPACING

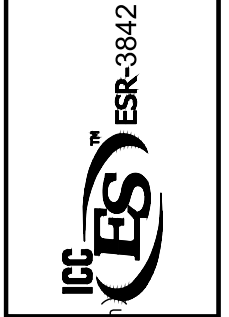


9BL56HD T-SLOT UNITIZED BASE SHOE SURFACE MOUNT DETAIL -DRILLED WITH TOP FASTENING ACCESS HOLE @ CONCRETE

12" ON CENTER ANCHOR SPACING

Revisions By:	
△	- - -
△	- - -
△	- - -
△	- - -
△	03-07-22 RPD

CRL
 C.R. LAURENCE CO. ARCHITECTURAL PRODUCTS
 13705 W. 14th St., Suite 100, Torrance, CA 90504-1887
 PH: (800) 421-8144 TX: 800-567-7501 www.crlaurence.com



Description: GRS GLASS RAILING SYSTEM FOR TEMPERED LAMINATED GLASS (13.52mm, 11/16" (17.52mm) 27/32" (21.52mm) & 1 1/16" THK. GLASS

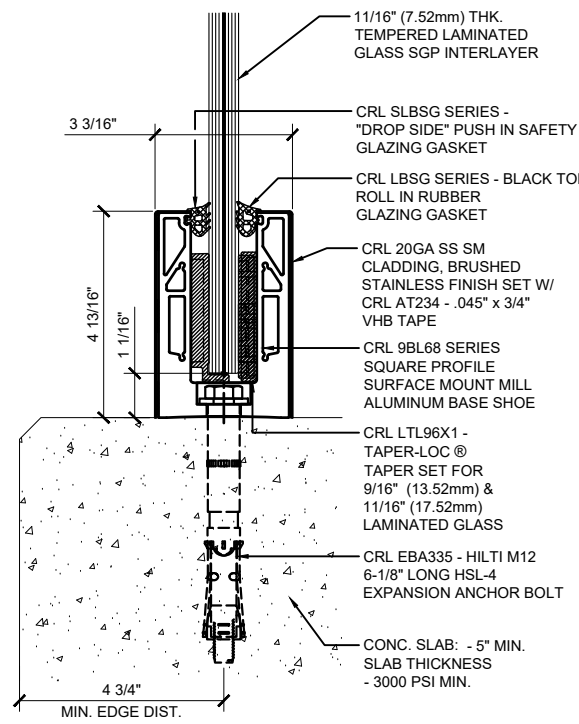
BASE SHOE OPTIONS SURFACE MOUNT w/ 9BL56H T-SLOT UNITIZED BASE SHOE

Drawn By: JG / RPD
 Date: 12/03/2021
 Scale: AS NOTED
 File Name:

CRL GRS Laminated Glass Railing System.dwg

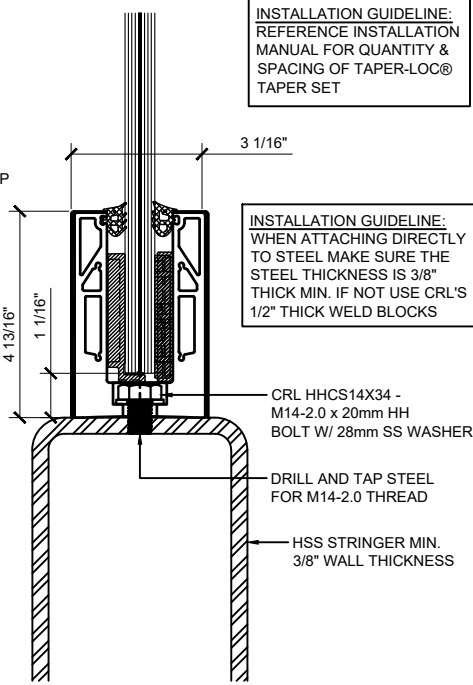
Sheet

TYPICAL BASE SHOE ATTACHMENTS USING THE 9BL68 SERIES BASE SHOE WITH TAPER-LOC® SYSTEM



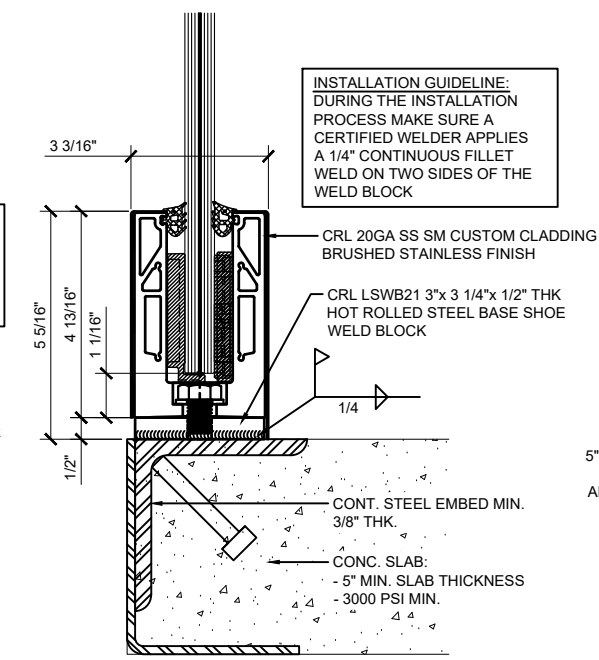
**SURFACE MOUNT DETAIL
CONCRETE SUBSTRATE**

ANCHOR SPACING WILL DEPEND ON MOUNTING SUBSTRATE AND REGION OF PROJECT
11 13/16" (300MM) O.C. SPACING IS STANDARD



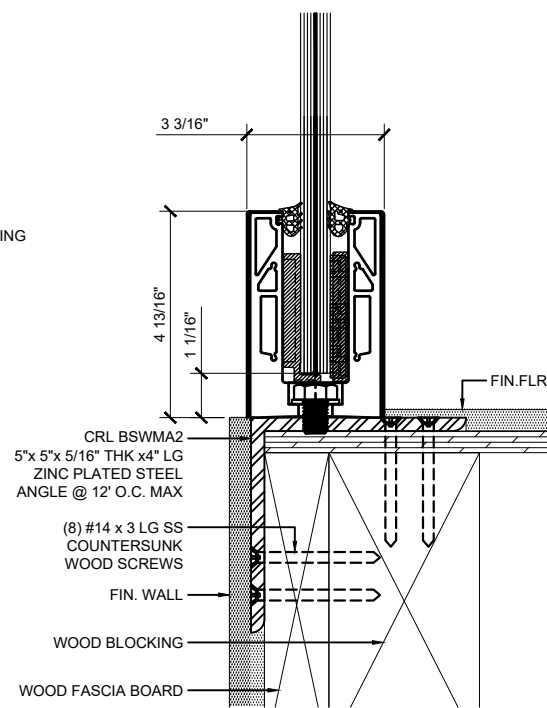
**SURFACE MOUNT DETAIL
STEEL SUBSTRATE**

11 13/16" (300MM) ON CENTER ANCHOR SPACING



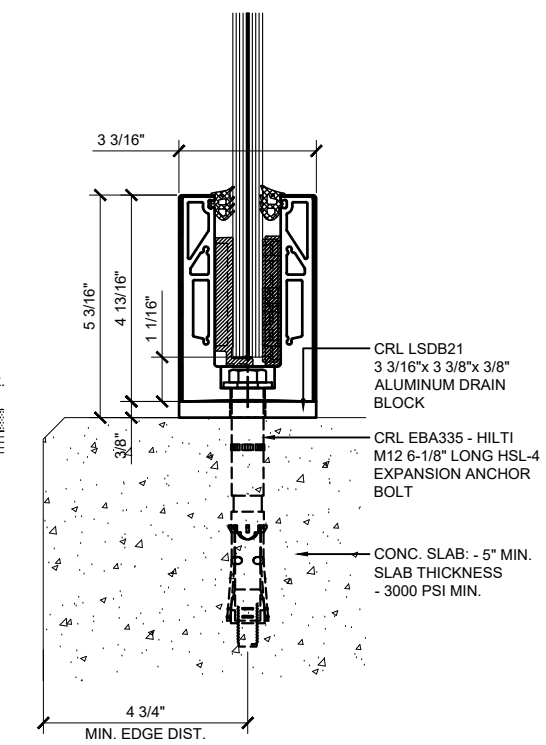
**SURFACE MOUNT DETAIL
STEEL SUBSTRATE W/ WELD BLOCK**

11 13/16" (300MM) ON CENTER ANCHOR SPACING



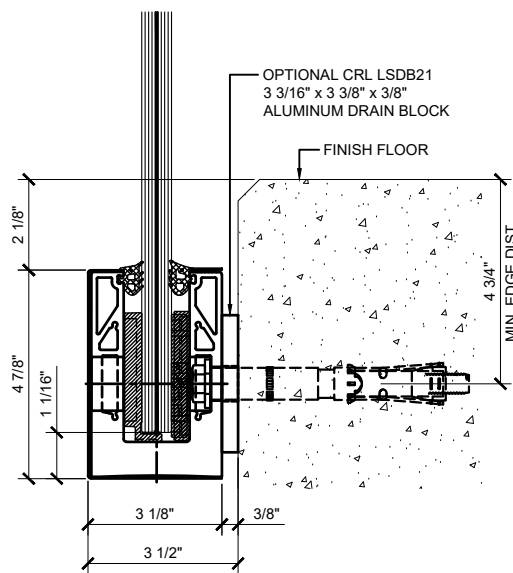
**SURFACE MOUNT DETAIL
WOOD SUBSTRATE**

11 13/16" (300MM) ON CENTER ANCHOR SPACING



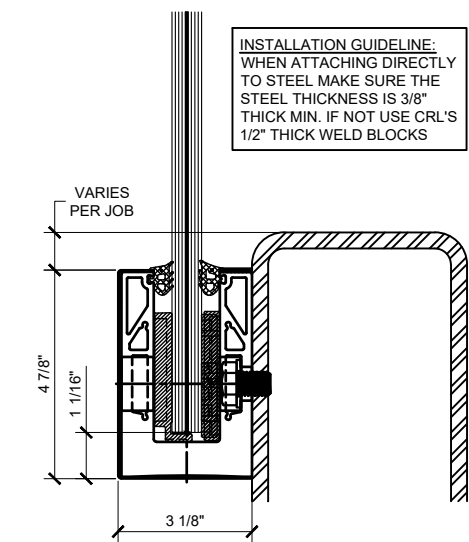
**SURFACE MOUNT DETAIL
CONCRETE SUBSTRATE W/ DRAIN BLOCK**

ANCHOR SPACING WILL DEPEND ON MOUNTING SUBSTRATE AND REGION OF PROJECT
11 13/16" (300MM) O.C. SPACING IS STANDARD



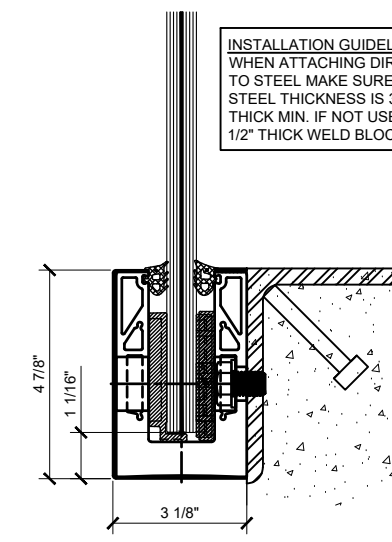
**FASCIA MOUNT DETAIL
CONCRETE SUBSTRATE**

ANCHOR SPACING WILL DEPEND ON MOUNTING SUBSTRATE AND REGION OF PROJECT
11 13/16" (300MM) O.C. SPACING IS STANDARD



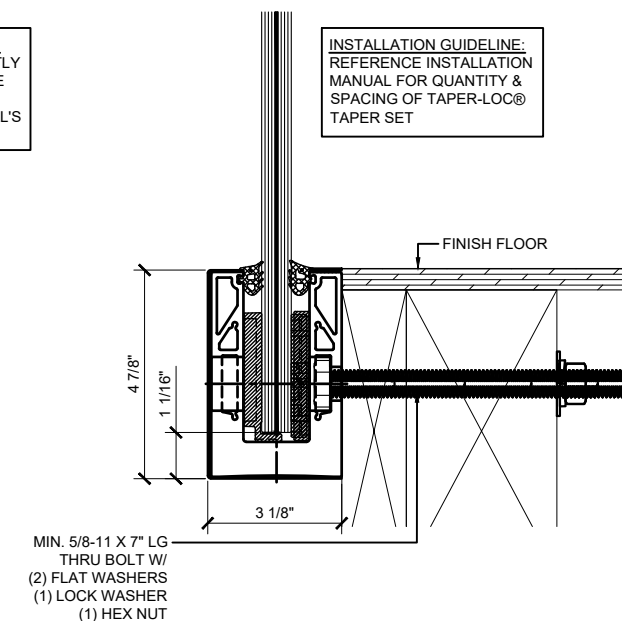
**FASCIA MOUNT DETAIL
STEEL SUBSTRATE**

11 13/16" (300MM) ON CENTER ANCHOR SPACING



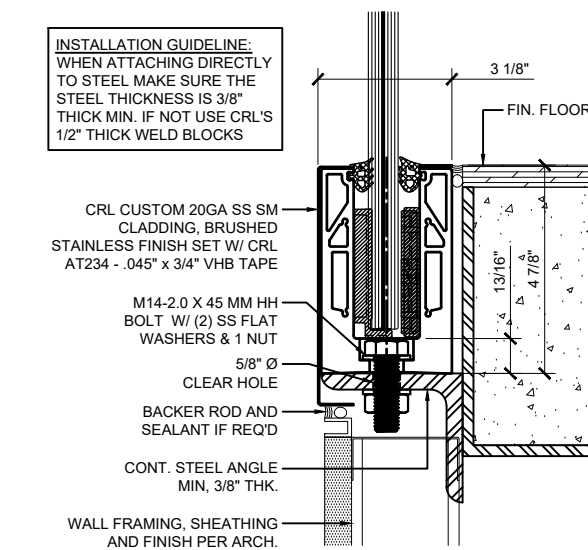
**FASCIA MOUNT DETAIL
STEEL SUBSTRATE**

11 13/16" (300MM) ON CENTER ANCHOR SPACING



**FASCIA MOUNT DETAIL
WOOD SUBSTRATE**

ANCHOR SPACING WILL DEPEND ON MOUNTING SUBSTRATE AND REGION OF PROJECT
11 13/16" (300MM) O.C. SPACING IS STANDARD



**SURFACE MOUNT DETAIL
STEEL SUBSTRATE W/ CUSTOM CLADDING**

11 13/16" (300MM) ON CENTER ANCHOR SPACING

INSTALLATION GUIDELINE:
REFERENCE INSTALLATION MANUAL FOR QUANTITY & SPACING OF TAPER-LOC® TAPER SET

INSTALLATION GUIDELINE:
WHEN ATTACHING DIRECTLY TO STEEL MAKE SURE THE STEEL THICKNESS IS 3/8\"/>

INSTALLATION GUIDELINE:
DURING THE INSTALLATION PROCESS MAKE SURE A CERTIFIED WELDER APPLIES A 1/4\"/>

INSTALLATION GUIDELINE:
WHEN ATTACHING DIRECTLY TO STEEL MAKE SURE THE STEEL THICKNESS IS 3/8\"/>

INSTALLATION GUIDELINE:
WHEN ATTACHING DIRECTLY TO STEEL MAKE SURE THE STEEL THICKNESS IS 3/8\"/>

INSTALLATION GUIDELINE:
REFERENCE INSTALLATION MANUAL FOR QUANTITY & SPACING OF TAPER-LOC® TAPER SET

INSTALLATION GUIDELINE:
WHEN ATTACHING DIRECTLY TO STEEL MAKE SURE THE STEEL THICKNESS IS 3/8\"/>

Revisions By:		
△	-	-
△	-	-
△	-	-
△	-	-
△	03-07-22	RPD

CRL
C.R. LAURENCE CO. ARCHITECTURAL PRODUCTS
1700 S. WILSON AVE., SUITE 100
COSTA MESA, CA 92626-1887
PH: (800) 421-8144 FAX: (800) 557-7501
WWW.CRLINC.COM

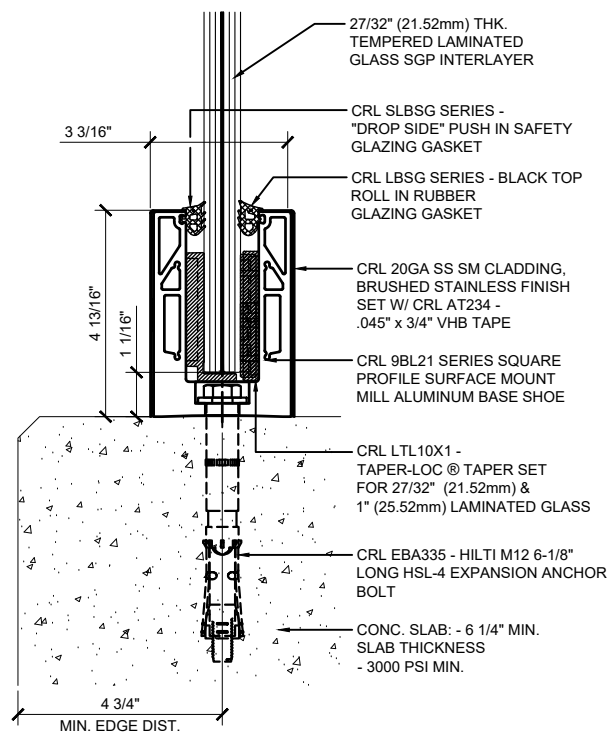
ICC ESR-3842
ES

Description: GRS
GLASS RAILING SYSTEM
FOR TEMPERED LAMINATED
GLASS
BASE SHOE OPTIONS
SURFACE & FASCIA MOUNT
THK. GLASS
(17.52mm), 11/16" (17.52mm) & 1 1/16" (25.52mm) & 27/32" (21.52mm)

Drawn By: JG / RPD
Date: 12/03/2021
Scale: AS NOTED
File Name: CRL GRS Laminated Glass Railing System.dwg

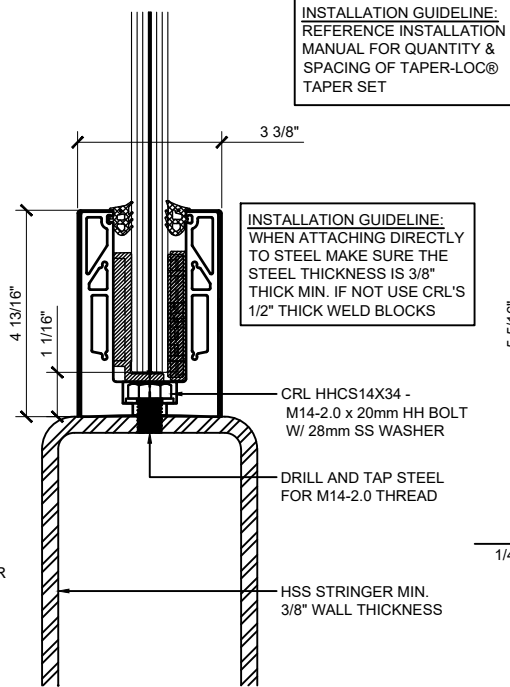
Sheet

TYPICAL BASE SHOE ATTACHMENTS USING THE 9BL21 SERIES BASE SHOE WITH TAPER-LOC® SYSTEM



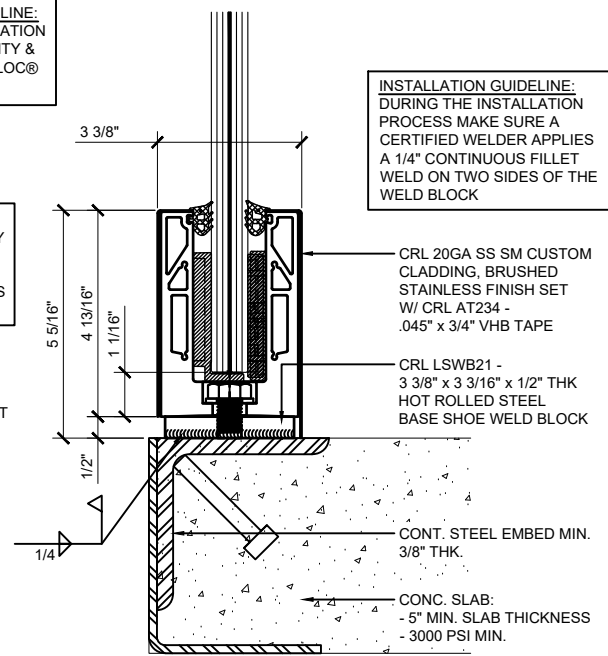
**SURFACE MOUNT DETAIL
CONCRETE SUBSTRATE**

ANCHOR SPACING WILL DEPEND ON MOUNTING
SUBSTRATE AND REGION OF PROJECT
11 13/16\"/>



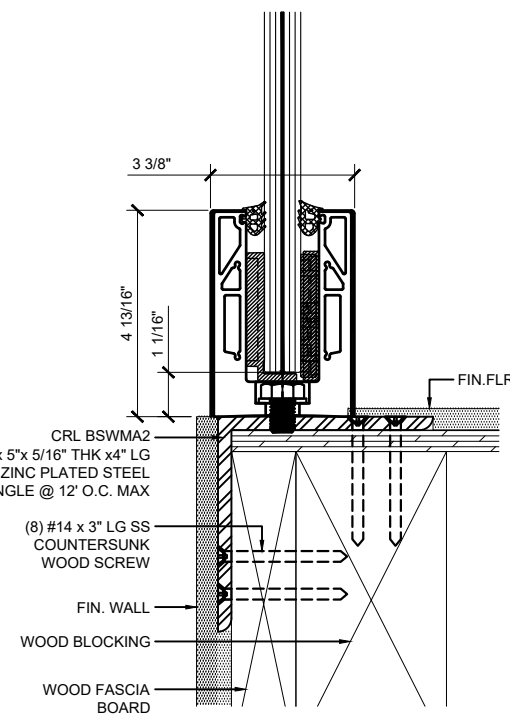
**SURFACE MOUNT DETAIL
STEEL SUBSTRATE**

11 13/16\"/>



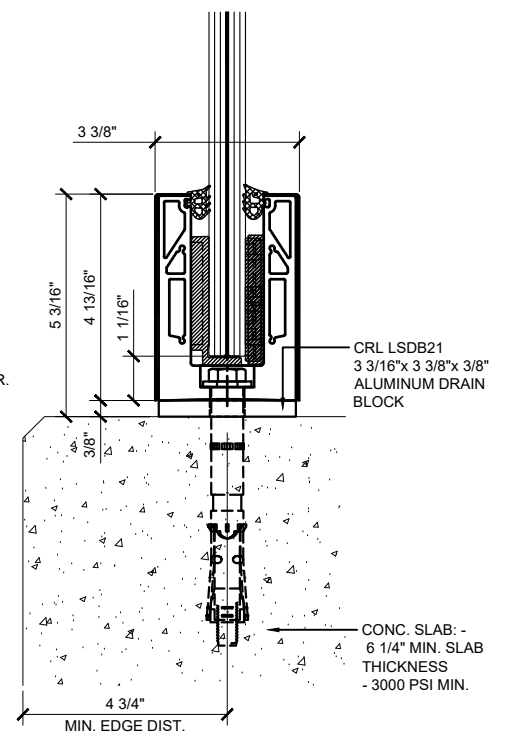
**SURFACE MOUNT DETAIL
STEEL SUBSTRATE W/ WELD BLOCK**

11 13/16\"/>



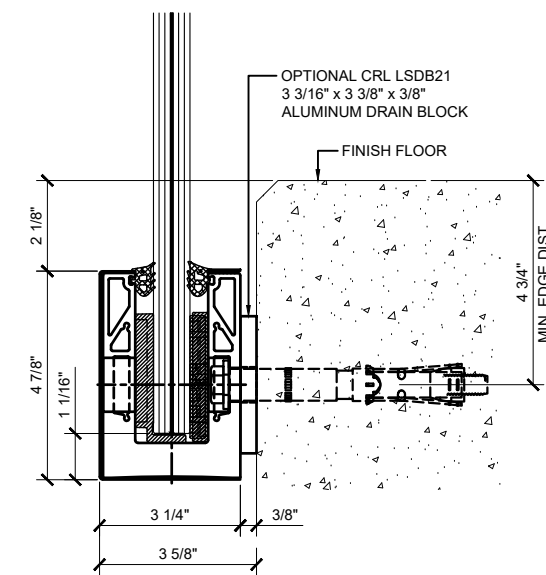
**SURFACE MOUNT DETAIL
WOOD SUBSTRATE**

11 13/16\"/>



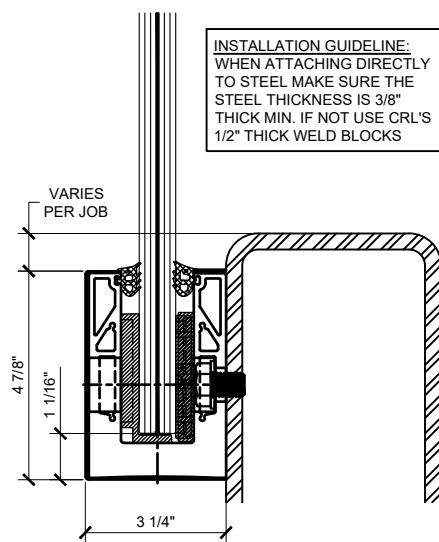
**SURFACE MOUNT DETAIL
CONCRETE SUBSTRATE W/ DRAIN BLOCK**

ANCHOR SPACING WILL DEPEND ON MOUNTING
SUBSTRATE AND REGION OF PROJECT
11 13/16\"/>



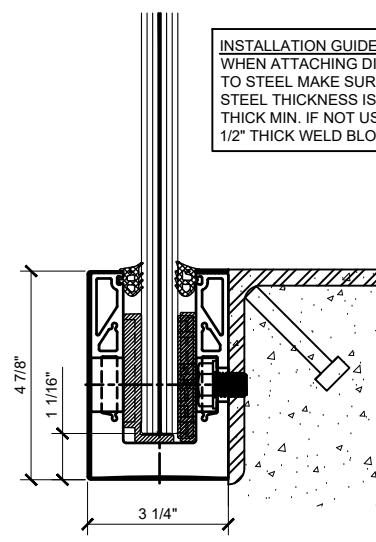
**FASCIA MOUNT DETAIL
CONCRETE SUBSTRATE**

ANCHOR SPACING WILL DEPEND ON MOUNTING
SUBSTRATE AND REGION OF PROJECT
11 13/16\"/>



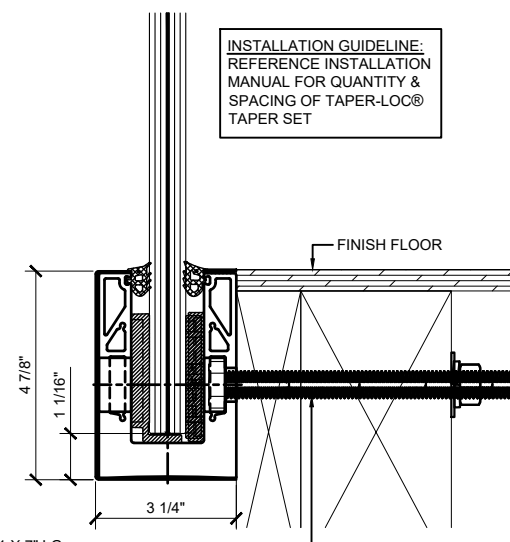
**FASCIA MOUNT DETAIL
STEEL SUBSTRATE**

11 13/16\"/>



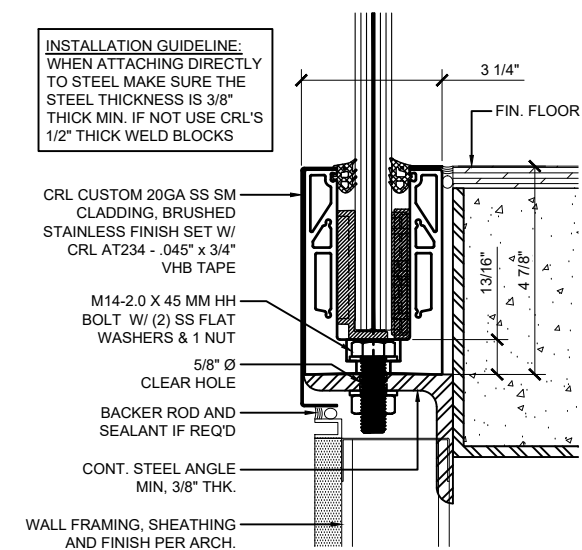
**FASCIA MOUNT DETAIL
STEEL SUBSTRATE**

11 13/16\"/>



**FASCIA MOUNT DETAIL
WOOD SUBSTRATE**

ANCHOR SPACING WILL DEPEND ON MOUNTING
SUBSTRATE AND REGION OF PROJECT
11 13/16\"/>



**SURFACE MOUNT DETAIL
STEEL SUBSTRATE W/ CUSTOM CLADDING**

11 13/16\"/>

INSTALLATION GUIDELINE:
REFERENCE INSTALLATION
MANUAL FOR QUANTITY &
SPACING OF TAPER-LOC®
TAPER SET

INSTALLATION GUIDELINE:
WHEN ATTACHING DIRECTLY
TO STEEL MAKE SURE THE
STEEL THICKNESS IS 3/8\"/>

INSTALLATION GUIDELINE:
DURING THE INSTALLATION
PROCESS MAKE SURE A
CERTIFIED WELDER APPLIES
A 1/4\"/>

INSTALLATION GUIDELINE:
WHEN ATTACHING DIRECTLY
TO STEEL MAKE SURE THE
STEEL THICKNESS IS 3/8\"/>

INSTALLATION GUIDELINE:
WHEN ATTACHING DIRECTLY
TO STEEL MAKE SURE THE
STEEL THICKNESS IS 3/8\"/>

INSTALLATION GUIDELINE:
REFERENCE INSTALLATION
MANUAL FOR QUANTITY &
SPACING OF TAPER-LOC®
TAPER SET

INSTALLATION GUIDELINE:
WHEN ATTACHING DIRECTLY
TO STEEL MAKE SURE THE
STEEL THICKNESS IS 3/8\"/>

Revisions By:	
△	- - -
△	- - -
△	- - -
△	- - -
△	03-07-22 RPD

CRL
C.R. LAURENCE CO. ARCHITECTURAL PRODUCTS
1700 S. WILSON AVE., SUITE 100
IRVINE, CA 92614-1887
PH: (949) 421-8144 FAX: 949-557-7501 www.crlusa.com

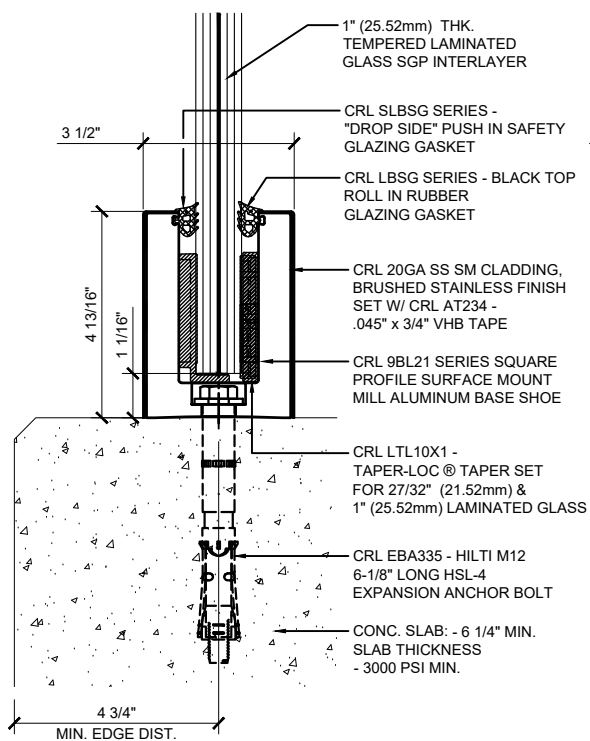
ICC ESR-3842

GRS
Description:
GLASS RAILING SYSTEM
FOR TEMPERED LAMINATED
GLASS
BASE SHOE OPTIONS
SURFACE & FASCIA MOUNT

11 13/16\"/>

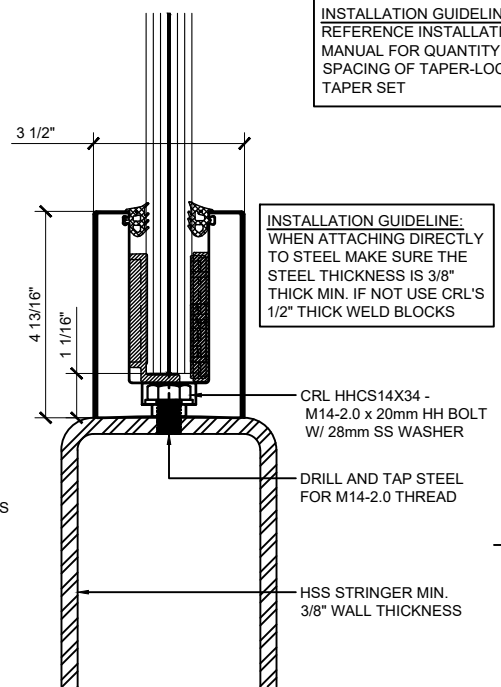
Drawn By: JG / RPD
Date: 12/03/2021
Scale: AS NOTED
File Name:
CRL GRS Laminated Glass Railing System.dwg

TYPICAL BASE SHOE ATTACHMENTS USING THE L25S SERIES BASE SHOE WITH TAPER-LOC® SYSTEM



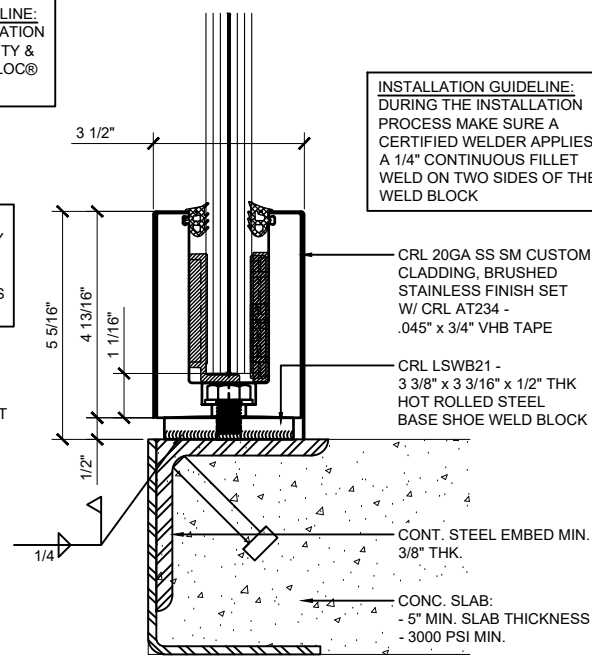
**SURFACE MOUNT DETAIL
CONCRETE SUBSTRATE**

ANCHOR SPACING WILL DEPEND ON MOUNTING
SUBSTRATE AND REGION OF PROJECT
11 13/16" (300mm) O.C. IS STANDARD



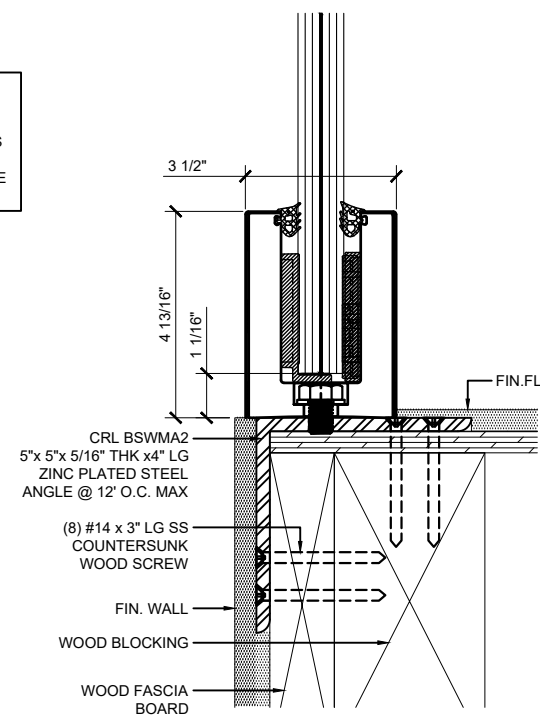
**SURFACE MOUNT DETAIL
STEEL SUBSTRATE**

11 13/16" (300mm) ON CENTER ANCHOR SPACING



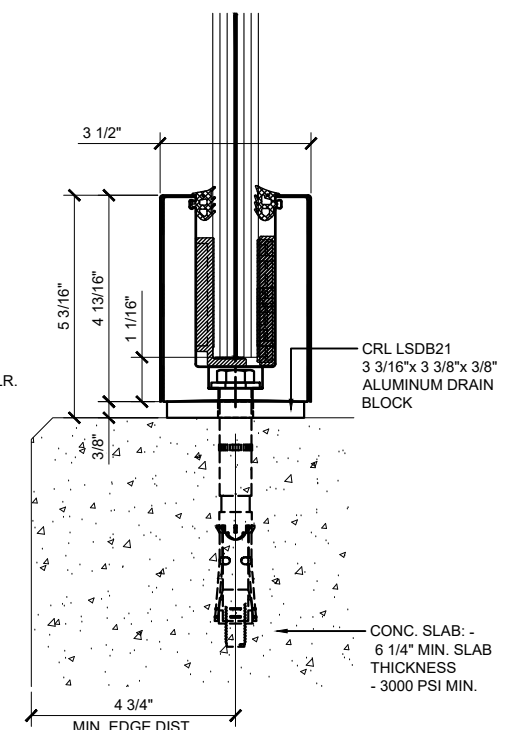
**SURFACE MOUNT DETAIL
STEEL SUBSTRATE W/ WELD BLOCK**

11 13/16" (300mm) ON CENTER ANCHOR SPACING



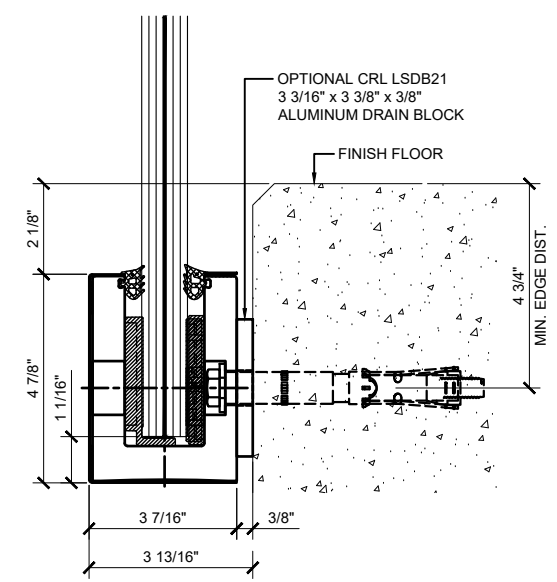
**SURFACE MOUNT DETAIL
WOOD SUBSTRATE**

11 13/16" (300mm) ON CENTER ANCHOR SPACING



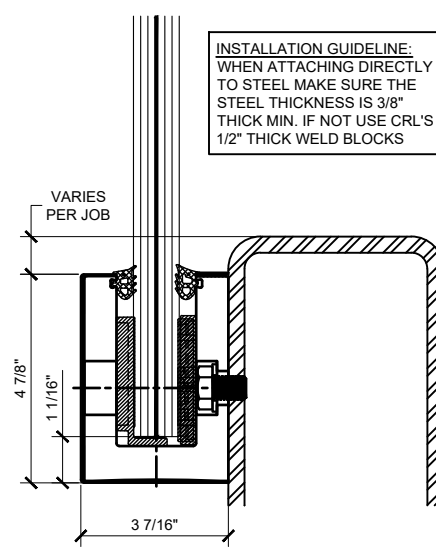
**SURFACE MOUNT DETAIL
CONCRETE SUBSTRATE W/ DRAIN BLOCK**

ANCHOR SPACING WILL DEPEND ON MOUNTING
SUBSTRATE AND REGION OF PROJECT
11 13/16" (300mm) O.C. IS STANDARD



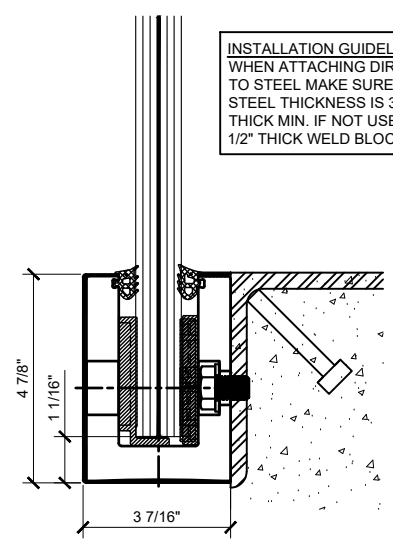
**FASCIA MOUNT DETAIL
CONCRETE SUBSTRATE**

ANCHOR SPACING WILL DEPEND ON MOUNTING
SUBSTRATE AND REGION OF PROJECT
11 13/16" (300mm) O.C. SPACING IS STANDARD



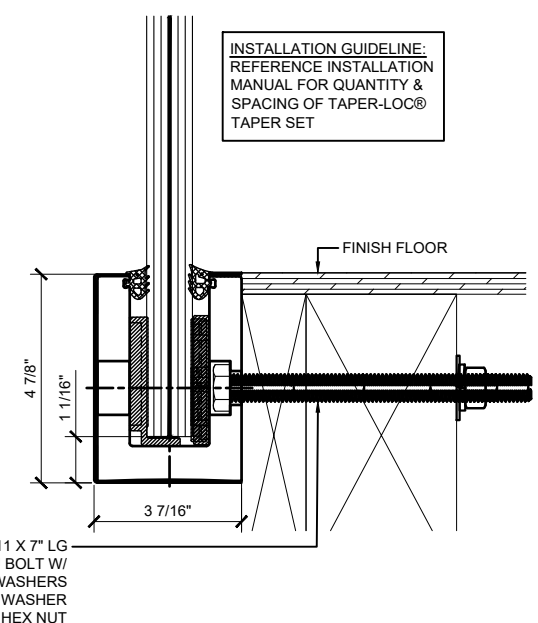
**FASCIA MOUNT DETAIL
STEEL SUBSTRATE**

11 13/16" (300mm) ON CENTER ANCHOR SPACING



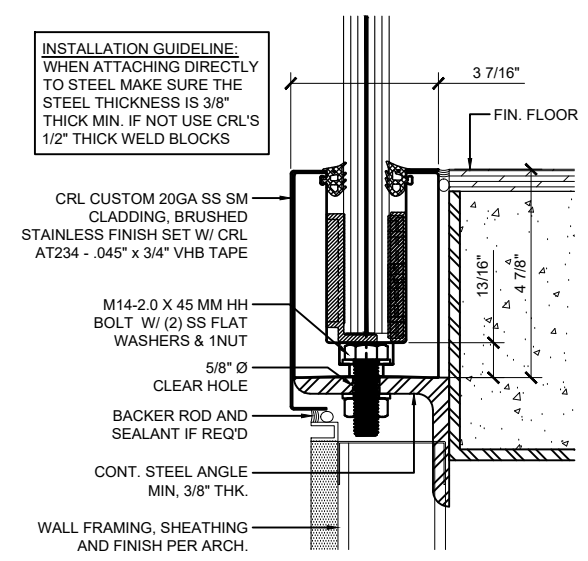
**FASCIA MOUNT DETAIL
STEEL SUBSTRATE**

11 13/16" (300mm) ON CENTER ANCHOR SPACING



**FASCIA MOUNT DETAIL
WOOD SUBSTRATE**

ANCHOR SPACING WILL DEPEND ON MOUNTING
SUBSTRATE AND REGION OF PROJECT
11 13/16" (300mm) O.C. SPACING IS STANDARD



**SURFACE MOUNT DETAIL
STEEL SUBSTRATE W/ CUSTOM CLADDING**

11 13/16" (300mm) ON CENTER ANCHOR SPACING

Revisions By:

△	-	-
△	-	-
△	-	-
△	-	-
△	03-07-22	RPD

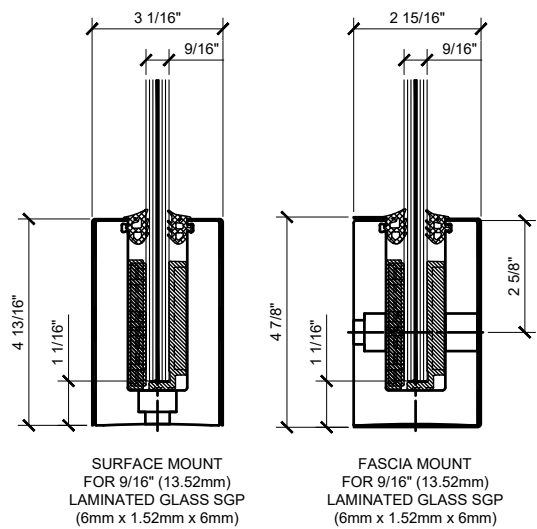
CRL
C.R. LAURENCE CO. ARCHITECTURAL PRODUCTS
1700 S. GARDEN ST. #100
COSTA MESA, CA 92626-1887
PH: (800) 421-8144 FAX: 800-557-7501 www.crlusa.com

ICC ESR-3842

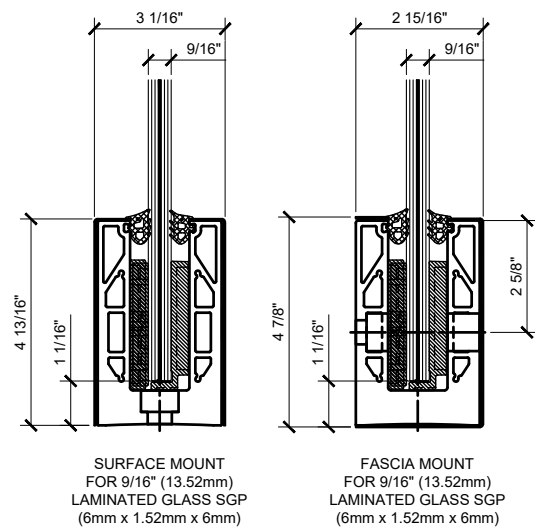
Description: GRS
GLASS RAILING SYSTEM
FOR TEMPERED LAMINATED
GLASS
BASE SHOE OPTIONS
SURFACE & FASCIA MOUNT
THK. GLASS
(25.52mm)

Drawn By: JG / RPD
Date: 12/03/2021
Scale: AS NOTED
File Name: CRL GRS Laminated Glass Railing System.dwg

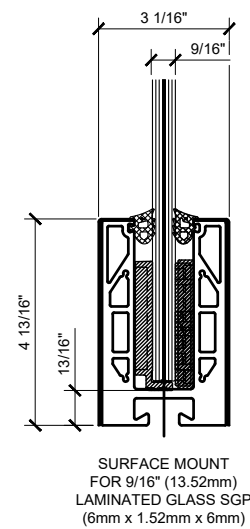
Sheet



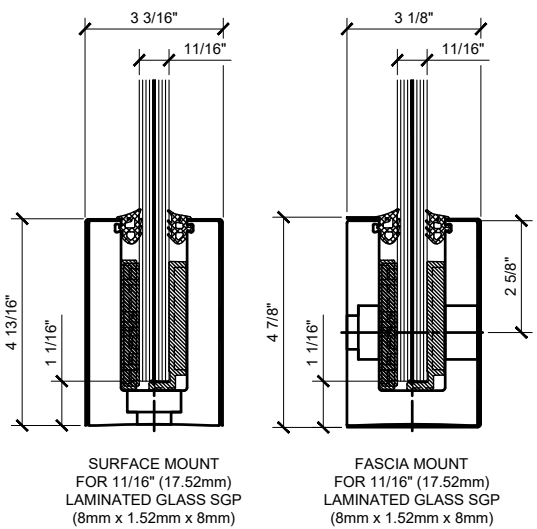
L56S SERIES BASE SHOE
LTL96X1 TAPER-LOC®



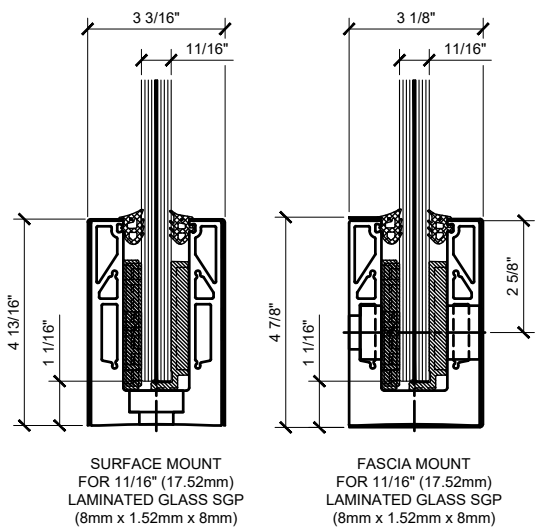
9BL56 SERIES BASE SHOE
LTL96X1 TAPER-LOC®



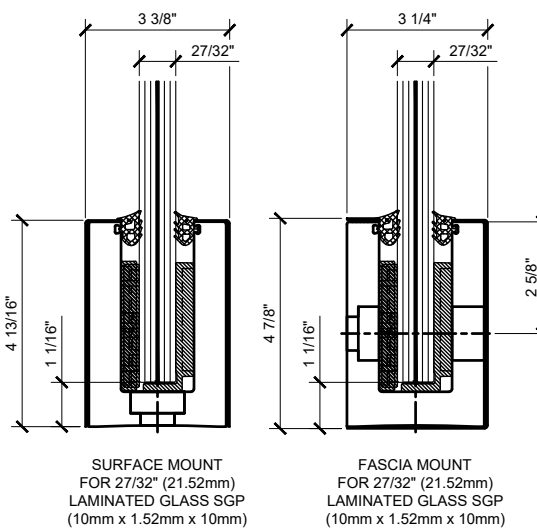
9BL56H SERIES BASE SHOE T-SLOT
LTL96X1 TAPER-LOC®



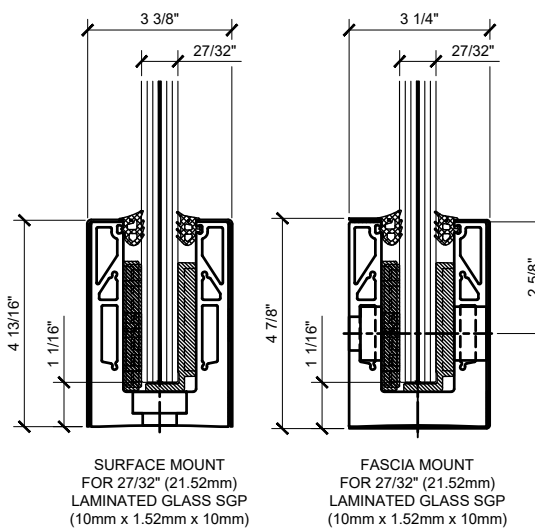
L68S SERIES BASE SHOE
LTL96X1 TAPER-LOC®



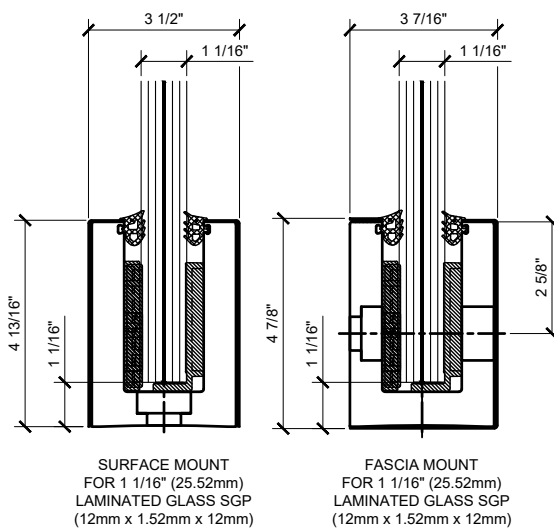
9BL68 SERIES BASE SHOE
LTL96X1 TAPER-LOC®



L21S SERIES BASE SHOE
LTL10X1 TAPER-LOC®



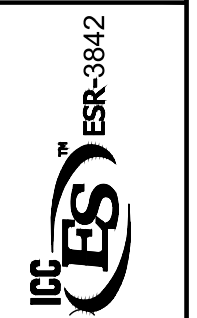
9BL21 SERIES BASE SHOE
LTL10X1 TAPER-LOC®



L25S SERIES BASE SHOE
LTL10X1 TAPER-LOC®

Revisions By:		
△	-	-
△	-	-
△	-	-
△	03-07-22	RPD

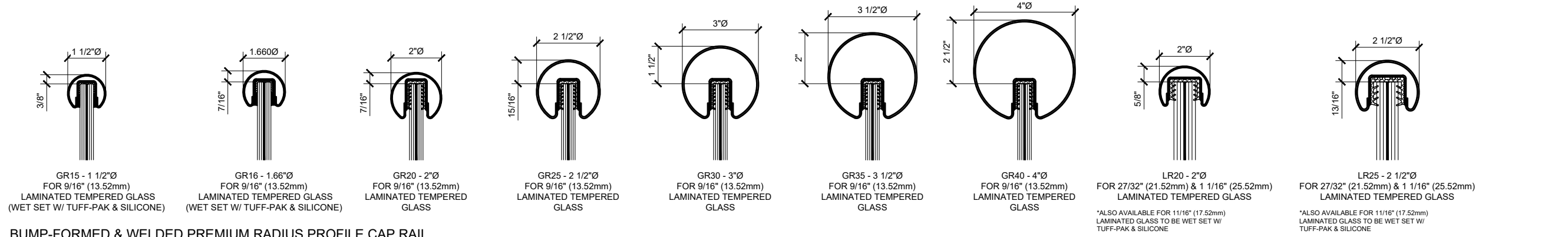
CRL
C.R. LAURENCE CO. ARCHITECTURAL PRODUCTS
17305 W. 11th Ave., Suite 100, Denver, CO 80233
PH: (800) 421-8144 FAX: (800) 567-7501 www.crlusa.com



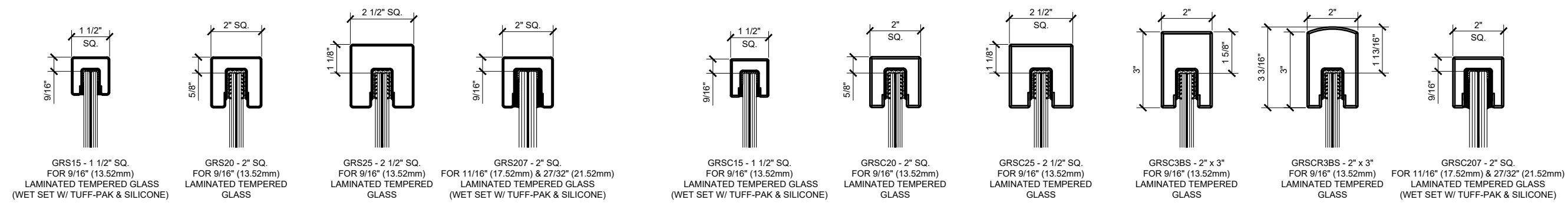
Description: GRS
GLASS RAILING SYSTEM
FOR TEMPERED LAMINATED
GLASS (13.52mm), 11/16" (17.52mm),
27/32" (21.52mm) & 1 1/16"
(25.52mm)
THK. GLASS

BASE SHOE OPTIONS
SURFACE & FASCIA MOUNT

Drawn By: JG / RPD
Date: 12/03/2021
Scale: AS NOTED
File Name: CRL GRS Laminated Glass Railing System.dwg

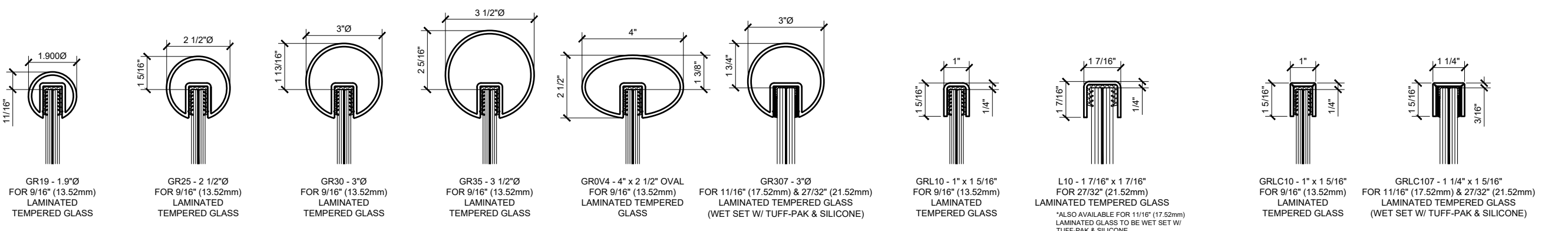


BUMP-FORMED & WELDED PREMIUM RADIUS PROFILE CAP RAIL



BUMP-FORMED & WELDED PREMIUM SQUARE PROFILE CAP RAIL

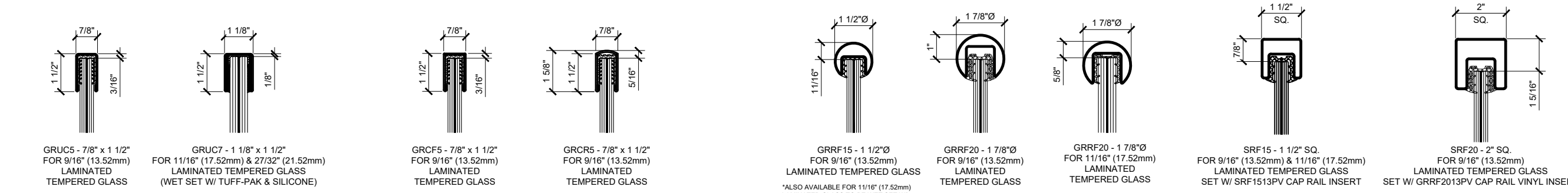
SQUARE PROFILE CRISP CORNER CAP RAIL



EXTRUDED ALUMINUM CAP RAIL

LOW PROFILE 11 GAUGE CAP RAIL

LOW PROFILE 11 GAUGE CRISP CORNER CAP RAIL



U-CHANNEL 18 GAUGE CAP RAIL

U-CHANNEL 18 GAUGE CRISP CORNER CAP RAIL

ROLL-FORMED CAP RAIL

Revisions By:

△	-	-
△	-	-
△	-	-
△	03-07-22	RPD

CRL

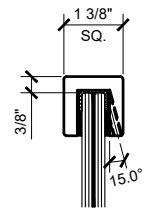
C.R. LAURENCE CO. ARCHITECTURAL PRODUCTS
 1300 S. WILSON AVE. SUITE 100
 LOS ANGELES, CA 90058-1887
 PH: (800) 421-8144 FAX: 800-567-7501
 WWW.CRLARCHITECTURAL.COM

ICC ESR-3842

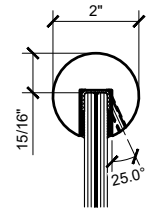
Description:
 GRS
 GLASS RAILING SYSTEM
 FOR TEMPERED LAMINATED
 9/16" (13.52mm), 11/16" (17.52mm)
 & 1 1/16" (25.52mm)
 THK. GLASS

CAP RAIL OPTIONS

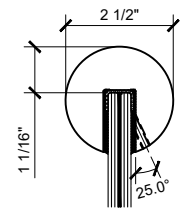
Drawn By: JG / RPD
 Date: 12/03/2021
 Scale: AS NOTED
 File Name: CRL GRS Laminated Glass Railing System.dwg
 Sheet



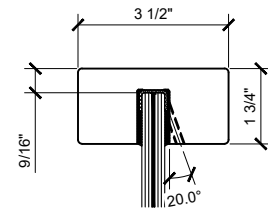
324 SERIES - 1 3/8" SQ.
FOR 9/16" (13.52mm)
LAMINATED TEMPERED GLASS
(WET SET W/
TUFF-PAK & SILICONE)



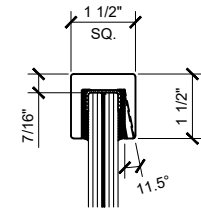
337 SERIES - 2"Ø
FOR 9/16" (13.52mm)
LAMINATED TEMPERED GLASS
(WET SET W/
TUFF-PAK & SILICONE)



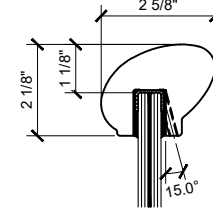
338 SERIES - 2 1/2" Ø
FOR 9/16" (13.52mm)
LAMINATED TEMPERED GLASS
(WET SET W/
TUFF-PAK & SILICONE)



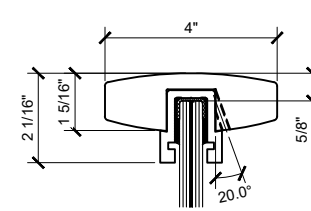
339 SERIES - 3 1/2" x 1 3/4"
FOR 9/16" (13.52mm)
LAMINATED TEMPERED GLASS
(WET SET W/
TUFF-PAK & SILICONE)



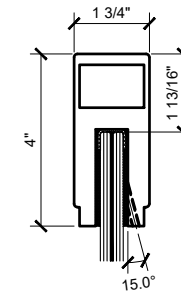
3243 SERIES - 1 1/2" SQ.
FOR 11/16" (21.52mm)
LAMINATED TEMPERED GLASS
(WET SET W/
TUFF-PAK & SILICONE)



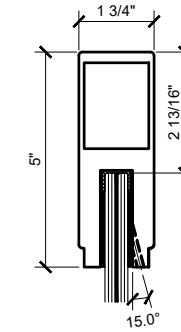
376 SERIES - ELLIPTICAL
FOR 9/16" (13.52mm)
LAMINATED TEMPERED GLASS
(WET SET W/
TUFF-PAK & SILICONE)



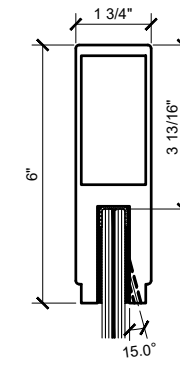
398 SERIES - 4" x 1 5/16"
FOR 9/16" (13.52mm)
LAMINATED TEMPERED GLASS
(WET SET W/
TUFF-PAK & SILICONE)



636 SERIES - 1 3/4" x 4"
FOR 9/16" (13.52mm)
LAMINATED GLASS
(WET SET W/ TUFF-PAK &
SILICONE)



637 SERIES - 1 3/4" x 5"
FOR 9/16" (13.52mm)
LAMINATED GLASS
(WET SET W/ TUFF-PAK &
SILICONE)



638 SERIES - 1 3/4" x 6"
FOR 9/16" (13.52mm)
LAMINATED GLASS
(WET SET W/ TUFF-PAK &
SILICONE)

BLUMCRAFT ® EXTRUDED SOLID ALUMINUM CAP RAIL

BLUMCRAFT ® EXTRUDED ALUMINUM CAP RAIL

Revisions By:		
5	-	-
4	-	-
3	-	-
2	-	-
1	03-07-22	RPD



C.R. LAURENCE CO. ARCHITECTURAL PRODUCTS
 17000 W. 11th St., Torrance, CA 90508-1887
 Fax: (805) 421-8144 Tel: 805-567-7501 www.crlaurence.com



Description: GRS
 GLASS RAILING SYSTEM
 FOR TEMPERED LAMINATED
 9/16" (13.52mm), 11/16" (17.52mm),
 27/32" (21.52mm) & 1 1/16"
 (25.52mm)
 THK. GLASS

CAP RAIL OPTIONS

Drawn By: JG / RPD
 Date: 12/03/2021
 Scale: AS NOTED
 File Name:

CRL GRS Laminated Glass Railing System.dwg
 Sheet