

Unless noted all dimensions $\pm .020''$
 $\pm .5\text{mm}$

Vertical Hole Spacing

Non cumulative tolerances on hole to hole spacing.

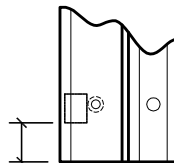
	Metric (mm)	Decimal (in.)
A	2414.0 ± 0.08	95.039 ± 0.038
B	38.6 ± 0.025	1.520 ± 0.010
C	63.5 ± 0.020	2.500 ± 0.008
D	82.6 ± 0.020	3.250 ± 0.008
E	101.6 ± 0.020	4.000 ± 0.008
F	117.5 ± 0.020	4.625 ± 0.008
G	130.2 ± 0.020	5.125 ± 0.008
H	152.4 ± 0.020	6.000 ± 0.008
N	85.7 ± 0.020	3.375 ± 0.008
O	263.5 ± 0.020	10.375 ± 0.008
P	387.4 ± 0.020	15.250 ± 0.008
Q	346.1 ± 0.020	13.625 ± 0.008
R	76.7 ± 0.020	3.020 ± 0.008
S	108.0 ± 0.020	4.250 ± 0.008
T	304.8 ± 0.020	12.000 ± 0.008

1/4-20
 Sex Bolt
 (10 places)

#12 x 82° F.H.
 countersunk wood
 or machine screws,
 (21 places).

37 bearings
 spaced equally
 @ 2.563"
 center to center.

OPTIONAL:
 #12 Pan Head
 Drill-kwik
 Screws



1.020"
 [25.9mm] Ref.

End of hinge to first
 bearing, both ends.

	HAGER COMPANIES HIGHWAY 78 WEST P.O. BOX 3368 OXFORD, ALABAMA 36203		
	780-210 95" HD		
DATE 10-25-96	REV. 01-15-02	DR. KBJ	SCALE None
FILENAME z:\roton\template\standard\780-210.dwg			
DRAWING NO.		780210095HD	