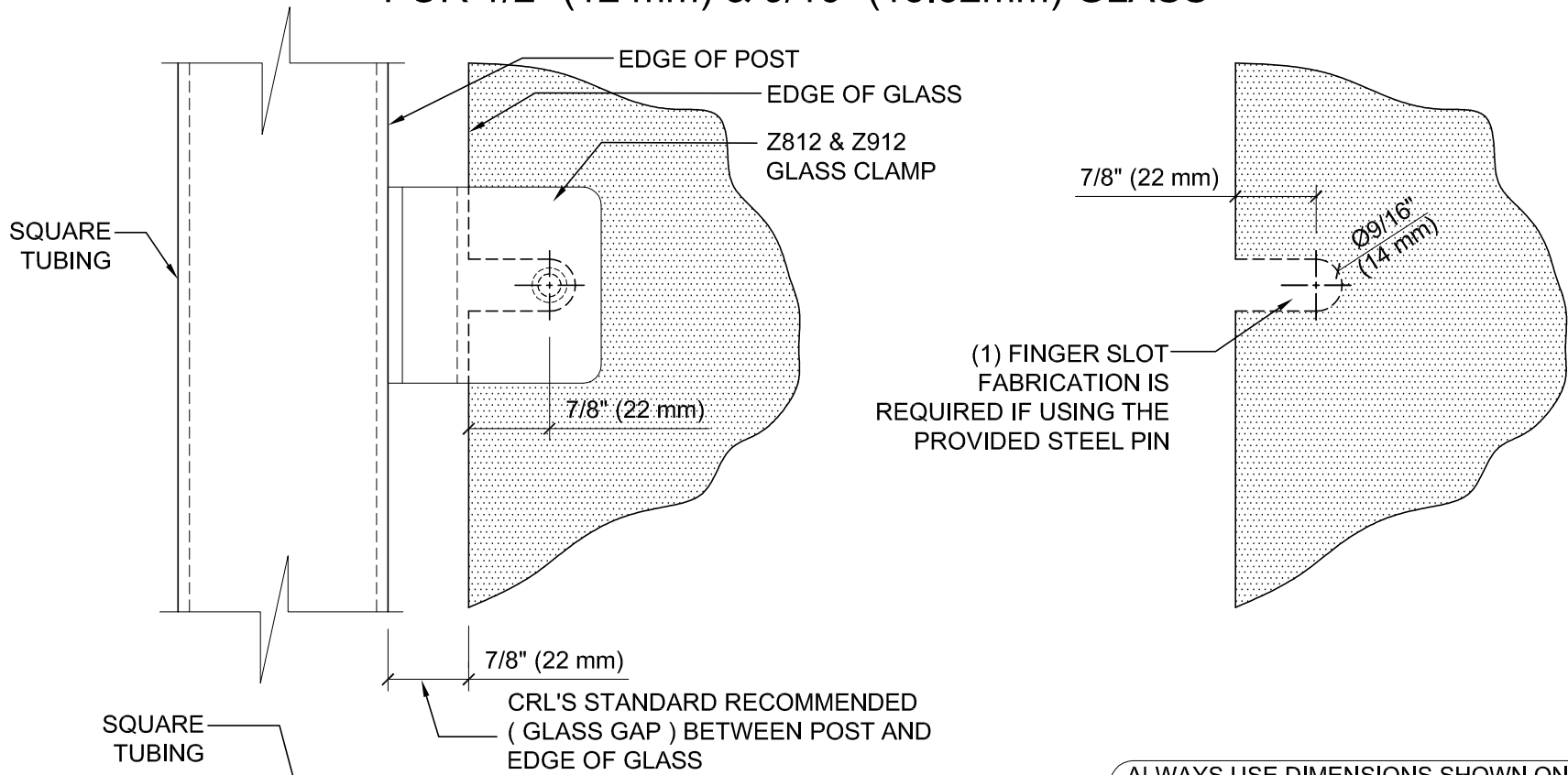


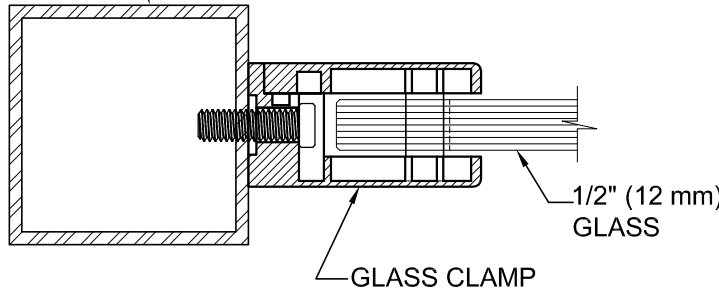
GLASS FABRICATION TEMPLATE FOR THE Z-SERIES SQUARE TYPE FLAT BASE CLAMPS FOR 1/2" (12 mm) & 9/16" (13.52mm) GLASS



ALWAYS USE DIMENSIONS SHOWN ON THE PLAN.
DO NOT SCALE OR DIMENSION ACTUAL DRAWING
TO ENSURE ACCURACY

**GLASS FABRICATION
TEMPLATE USED FOR:**

CATALOG NUMBER
Z812BR
Z812CH
Z812SC
Z812BN
Z812GP
Z812W
Z912BS
Z912PS
ZP912BS
ZP912PS



SPECIFICATIONS:

- GLASS THICKNESS: MODELS FOR 1/2" (12 mm) GLASS.
- BASE DESIGN: FLAT BACK
- FOR USE WITH: SQUARE TUBING OR OTHER FLAT SURFACES.
- MATERIAL: CHOICE OF ZINC CONSTRUCTED OR STAINLESS STEEL. STAINLESS STEEL OR POWDER PAINTED ZINC CLAMPS ARE RECOMMENDED FOR MORE DURABILITY IN EXTERIOR APPLICATIONS.
- GLASS FABRICATION: FOR 1/2" (12mm) THICK GLASS. USE 9/16" (14mm) FINGER SLOT REQUIRED IF USING PROVIDED STEEL PIN FOR GLASS SUPPORT
- INCLUDES: RUBBER GASKETS AND STEEL PIN (FOR OPTIONAL USE) WITH GROMMET.

C.R. LAURENCE CO.®
ARCHITECTURAL PRODUCTS
PH: 800-421-6144 FX: 800-262-3299
WWW.CRLAURENCE.COM

DESCRIPTION:
Z-SERIES SQUARE TYPE FLAT BASE GLASS CLAMP
FOR 1/2" (12 mm) & 9/16" (13.52mm) THICK GLASS

CAT. NO: (SEE CHART)		DATE: 06/28/17	
FILE NAME: Z812-Gls Fab REV		SCALE: N.T.S.	
DRAWN BY: R.A.	CHECKED BY: C.H.	SHT 1 OF 1	