

CRL ELECTRONIC EGRESS CONTROL HANDLE

Quote/Order Form (100 and 110 Series)

Fax Completed Form
to (800) 587-7501

Date: ____ / ____ / ____

Firm Name: _____ P.O. # (if Ordering): _____

Phone #: _____ City and State _____

Project Name: _____

Architect's Name, City and State: _____

Total Quantity: _____

Door Mark: _____

Egress Housing: EG100 Series EG110 Series Exterior A B C D E

Dummy Housing: DH100 Series DH110 Series Handle: F G H J J-S

K K-S L L-S M

M-S N P

X Y Z

(None)

Pair(s): _____ Swing: _____ Single(s): _____

Keying: With Exterior Keyed Cylinder Keyed Alike

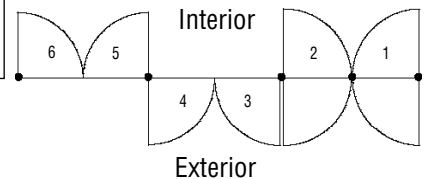
No Exterior Keyed Cylinder Other (Specify): _____

CRITICAL INFORMATION

Jamb Condition: Sidelites Frame Size: _____

Wall (Pivot Distance Must be Increased to 3-1/2")

Door Swing Diagram



NOTE: SWING 1 AND 2 CAN ONLY BE USED WITH A SHEAR LOCK

Header Size: _____

Magnetic Lock:

- GF3000 Concealed Mag Lock (EG100 only)
- GF3000 BRD Concealed Mag Lock (EG110 only)
- MLST1200U Surface Mounted Mag Lock (EG100 only)
- Other (Specify): _____

CRL to Supply Mag Lock

Customer to Supply

Sill Condition:

- 1/2" x 4" Threshold
- 1/2" x 7" Threshold
- Other (Specify): _____

CRL to Supply Threshold

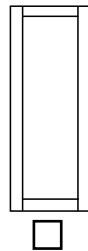
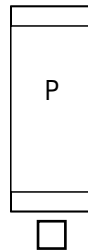
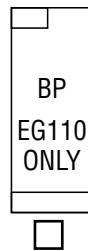
Customer to Supply

Rail Description:

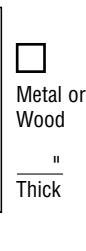
Clad Non-Clad Size or Number: _____

Door Type:

Check One



Wide



"
Thick

Glass Thickness: 1/2" (12 mm) 3/4" (19 mm)

Actual Door Size: _____ Horizontal Centers: _____ (CRL Will Calculate)

Crash Bar Height Above Bottom of Door: 42" Other (Specify): _____

Finish: Stainless Steel: #4 Satin Brushed #8 Polished

Brass: #4 Satin #8 Polished

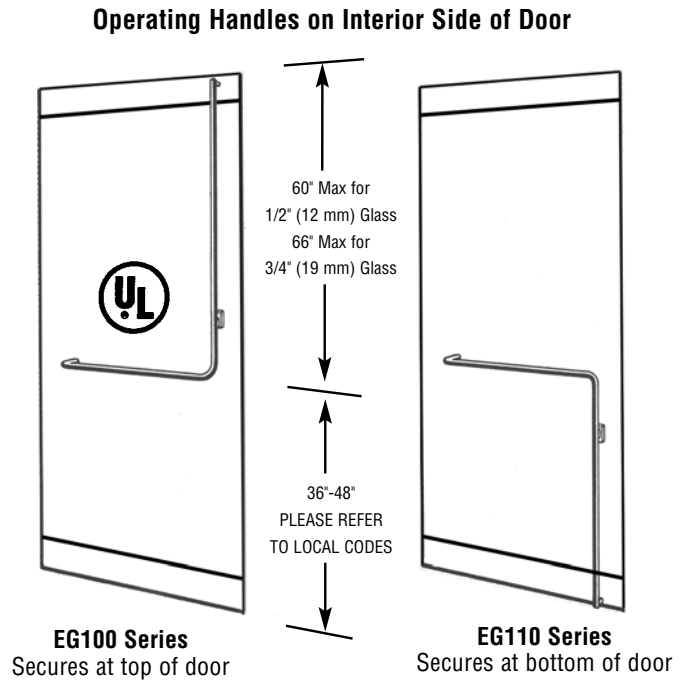
Custom (Specify): _____

Please Contact CRL Technical Sales for specification details on ordering these new handles for All Glass Entrance Doors. Toll Free Phone (800) 421-6144 U.S. or (877) 421-6144 Canada, Extension 7700 Toll Free Fax (800) 587-7501 or E-mail techsales@crlaurence.com

CRL INTERIOR DOOR HANDLES

CRL Electronic Egress Control Handle

- For 1/2" (12 mm) or 3/4" (19 mm) Tempered Glass
- Custom Sizes of Stock Finishes Ship Within Three Business Days
- Optional Keyed Access Device
- Optional Magnetic Locks
- Optional Exterior Fixed Handles
- Available in Polished or Brushed Stainless Steel, Polished or Satin Brass, and Oil Rubbed Brass*



Electronic Egress Handle (EEH) Specifications and Features

- The EEH is field convertible from Fail Safe to Fail Secure. Our standard unit will be Fail Safe, and we can factory set for Fail Secure as requested.
- The EEH is available in the same finishes and sizes that we established for the manual panic handle. This unit has the same heavy duty construction as our Panic Handle, but the actuation movement has been reduced to an almost imperceptible amount.
- The internal components are "Water Resistant" and no electronic logic circuits are used. Our EEH is suitable for use in any environment specified for the electronic lock being used.
- The wiring/hook-up of this unit is greatly simplified as it does not require power for operation. We provide the cable with a labeled and pre-wired terminal block.
- Our handle uses a sealed mechanical switch, which eliminates issues of touch sensitivity and adjustment particularly when moisture is present.
- Unlike other handles that must have a lacquer coating to prevent external actuation, our bars are brushed or polished Stainless Steel for greatly improved finish life.
- Our EEH actuates with a force far less than that required to open the door, providing exceptional safety for frail or disabled persons.
- Appearance exactly matches our Panic and Deadbolt Handles for mixed Installations
- **OPTIONAL:** Exterior Keyed Access Device

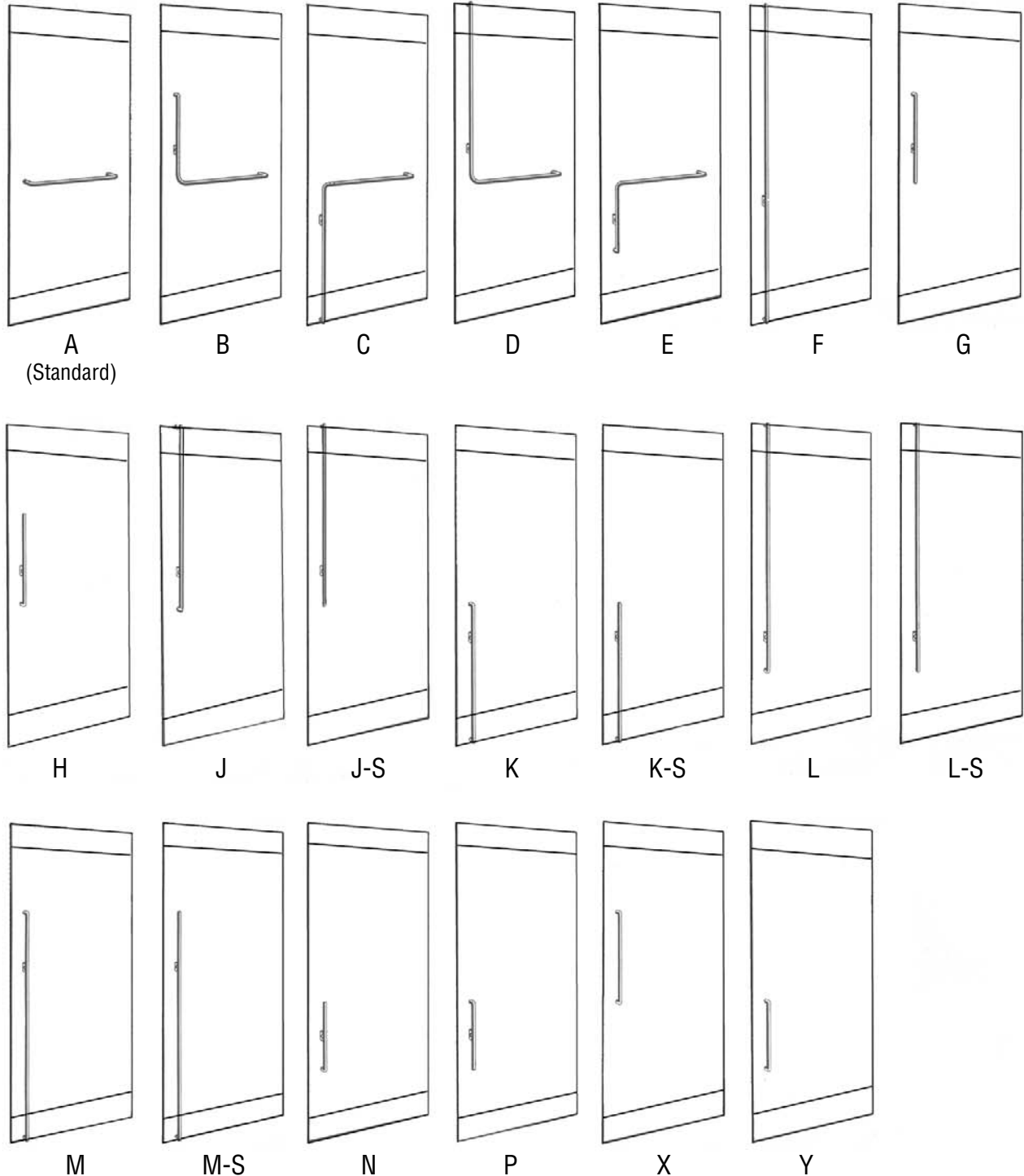
Technical Specifications:

- Power: 12-24 Volt AC or DC
- Maximum Power Input: 24 Volts @ 3 Amps (or 72 Watts)
- Current Drawn: None
- Contact: 5 Amps @ 32 Volts
- * **NOTE:** This is Not a Panic Device
- * Oil Rubbed Brass Finish is Custom and has a 7-10 Day Lead Time
- Wire: 4 Conductor, 22 Gauge, 17 Ft. Provided
- Use: Indoor and Outdoor
(Lock Must Be Rated For Outdoor Use)

Please Contact CRL Technical Sales for specification details on ordering these new handles for All Glass Entrance Doors. **Toll Free Phone** (800) 421-6144 U.S. or (877) 421-6144 Canada, Extension 7700 **Toll Free Fax** (800) 587-7501 or E-mail techsales@crlaurence.com

CRL EXTERIOR PUSH/PULL HANDLE COMBINATIONS FOR ELECTRONIC EGRESS CONTROL HANDLES

Exterior Fixed Pull Handles



NOTE: Any Exterior Fixed Pull Handle on this page can be used in combination with any Electronic Egress Control Handle shown on page 2.

Please Contact CRL Technical Sales for specification details on ordering these new handles for All Glass Entrance Doors. **Toll Free Phone** (800) 421-6144 U.S. or (877) 421-6144 Canada, Extension 7700 **Toll Free Fax** (800) 587-7501 or E-mail techsales@crlaurence.com

HANDLE NUMBER BREAKDOWN

PA	Base Handle Type-	Panic	PA	
		Deadbolt-	DB	
		Dummy Handle-	DH	
		Electric Egress Control-	EG	
100	Interior Handle Type-	100		
		110		
		130-	DB or DH ONLY	Bolts to header only
		131-	DB ONLY	Bolts to floor only
		132-	DB ONLY	Bolts to header and floor
		140-	DB or DH ONLY	
		150-	DB or DH ONLY	
		160-	DB or DH ONLY	
		170-	DB or DH ONLY	
A	Exterior Pull-	See attached sheet		
3	Swing-	PA Handles-	RHR (3), LHR (4) ONLY	
		EG Handles-	RDH (1), LHD (2), RHR (3), LHR (4) ONLY	
		DB Handles-	RDH (1), LHD (2), RHR (3), LHR (4), RH (5), LH (6)	
R	Mounting Option-	Rail-	R	
		Glass-	G	
		Aluminum Stile-	A	
K	Keying Options-	Cyl Outside-	K	PA,EG
		No Cyl-	P	PA,EG
		Cyl/Cyl-	K	DB only
		Cyl/T-turn	1	DB only
		T-turn/T-turn	2	DB only
		No ext cyl not an option for DB		
This Character is omitted for DH handles				
BS	Finish-	BS-	Brushed Stainless Steel	US32
		PS-	Polished Stainless Steel	US32D
		PB-	Polished Brass	US32NL
		SB-	Satin (Brushed) Brass	US3NL
		ORB-	Oil Rubbed Brass	

CRL SUGGESTED GUIDELINES

CRL Recommends that Door Height be Limited to:

1/2" (12 mm) Glass:

Exterior Openings: 8'-0" (2.44 m)

Interior Openings: 8'-6" (2.59 m)

3/4" (19 mm) Glass:

Exterior Openings: 8'-6" (2.59 m)

Interior Openings: 9'-0" (2.74 m)

NOTE: If doors exceeding these recommendations are required, the designer should take into account the following factors:

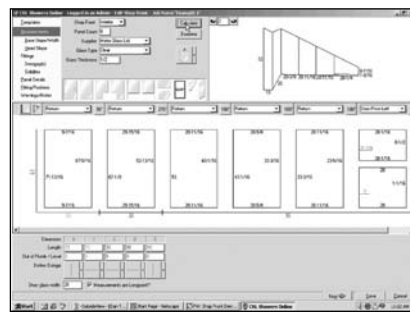
- Volume of Daily Usage (Number of Anticipated Cycles)
- Deflection of Door Due to Wind and/or Stack Load Pressures
- Stability of Door Under Operation (How Much the Door Flexes When Pushed)

For assistance in design applications, please contact CRL Technical Sales.

CRL Storefronts Online Design and Glass Size Program

- An Innovative Web-Based Program that Generates Glass Sizes from Measurements You Take in the Field
- Access 24/7 at www.crlaurence.com
- Frameless Storefront Designs Have Never Been So Easy
- Simply Push the Print Icon Upon Completion of Data Entry to Generate Complete Glass Sizes
- Built-In Safety Features Ensure CRL Approves of Design and Specifications

CALL FOR DETAILS!
Ask for Extension 7706



Please Contact CRL Technical Sales for specification details on ordering these new handles for All Glass Entrance Doors. **Toll Free Phone** (800) 421-6144 U.S. or (877) 421-6144 Canada, Extension 7700 **Toll Free Fax** (800) 587-7501 or E-mail techsales@crlaurence.com