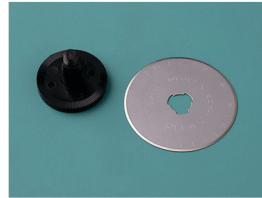


Blade change instructions for RTY-2/DX 45mm Ergonomic Rotary Cutters (right-handed setup)



Blade is placed on the stem before assembly



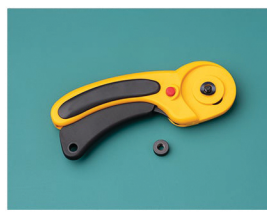
Incorrect position of washer and nut



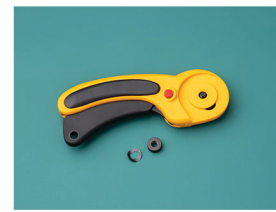
Correct position of washer and nut



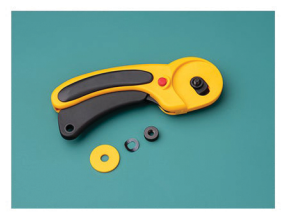
Flip rotary cutter over.



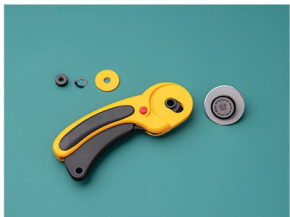
Remove the nut. Set it to the side in the same position you removed it.



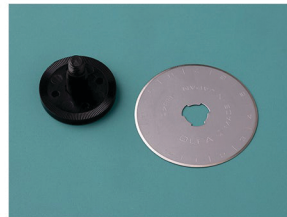
Remove the metal washer. Set it to the side in the same position you removed it.



Remove the plastic washer and set to the side as well.



Pull the handle off of the stem that holds the blade and set it to the side.



Carefully remove the old blade from the stem and replace it with a new blade.



Place the handle back onto the stem.



Place the plastic washer back onto the stem followed by the metal washer with the curve facing up like a bowl.



Next place the nut back onto the stem and tighten until the front disk begins to spin. Do not over tighten.



Once all parts are assembled then you are ready to resume cutting.