

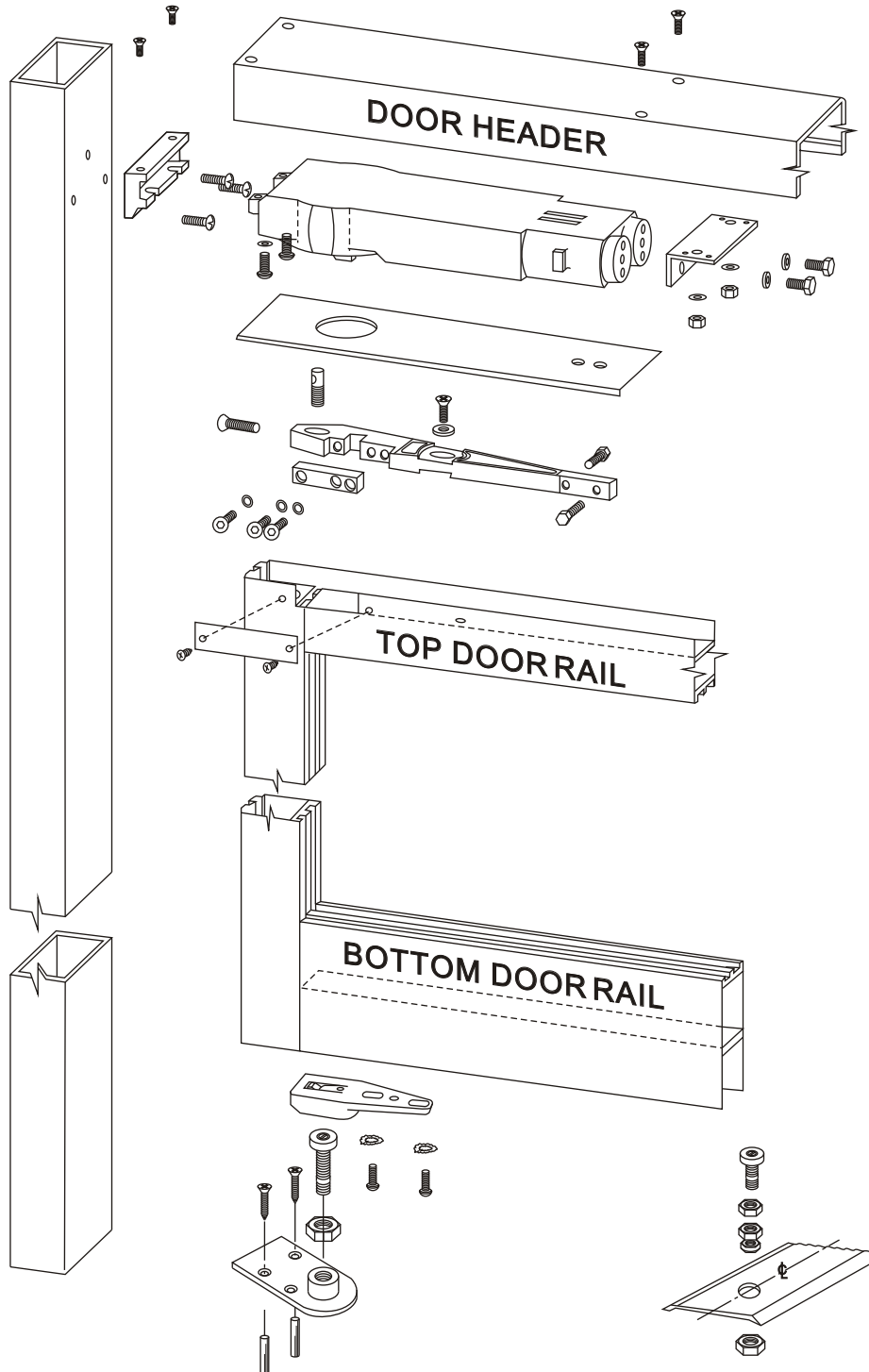


SERVING THE INDUSTRY FROM 17 NORTH AMERICAN LOCATIONS
C.R. Laurence Co., Inc. Toll Free (800) 421-6144 FAX (800) 262-3299
 Visit our home page on the WWW at [Http://www.craurence.com](http://www.craurence.com)

INSTALLATION INSTRUCTIONS FOR ALL CRL CONCEALED OVERHEAD DOOR CLOSERS

Complete closer kits include: Closer body, mounting clips, CK Type top arm assembly and adjustable dual purpose bottom pivot set.
Closer only kits include: Unit body and mounting clips.

- ◇ CENTER-HUNG FOR DOUBLE OR SINGLE ACTION DOORS
- ◇ SIDE LOADING AND END LOADING INSTALLATION
- ◇ DUAL VALVES FOR LATCHING AND CLOSING SPEED ADJUSTMENT



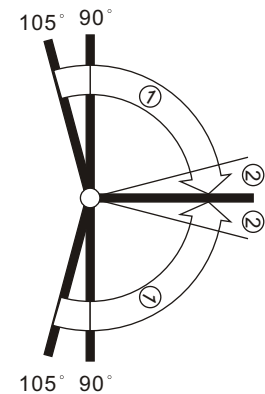
IMPORTANT

- NO responsibility can be accepted by the manufacturers if these installation instructions are disregarded
- After closer is installed into the DOOR HEADER, do not drill in this area for it may damage closer.

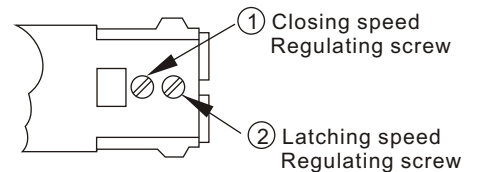
PROPOSAL for DOOR CLEARANCE

Both of door stile	1/8" (3mm)
top door rail	1/8" (3mm)
Bottom door rail	3/16" (4.8mm)

SPEED ADJUSTMENT



- ① CLOSING RANGE
- ② LATCHING RANGE



- ① CLOSING/
- ② LATCHING
- Speed adjustment



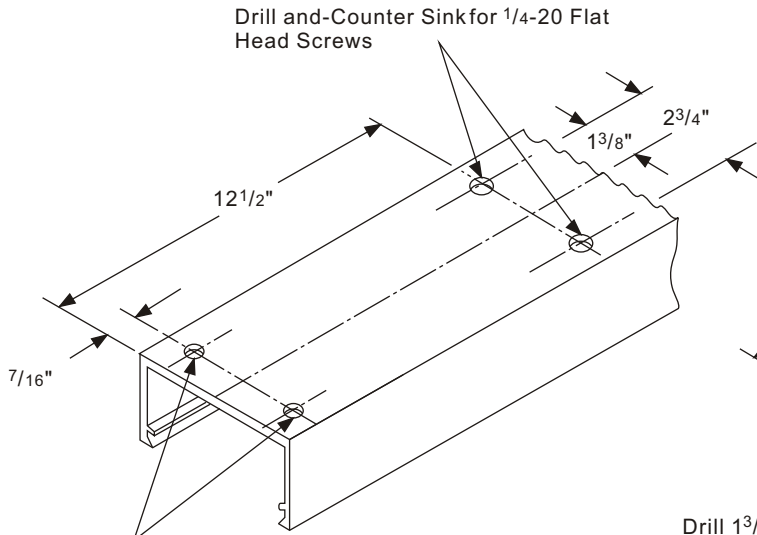
Max. 2 turns in either direction



HEADERS & JAMBS

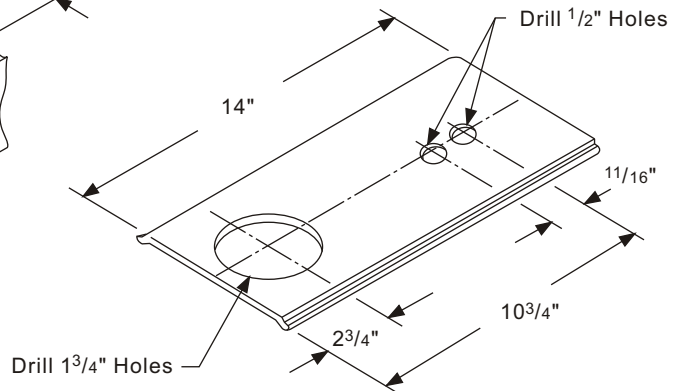
DOOR HEADER

Drill and counter-sink outside top surface for 10-32 x 7/16" and 1/4-20 x 1 1/4" flat head screws as shown.



COVER PLATE

Drill 1 3/4" hole as shown.
Drill 1/2" hole as shown.

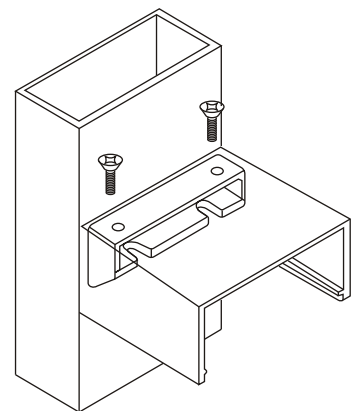
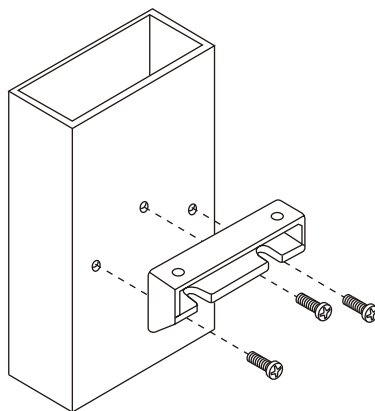
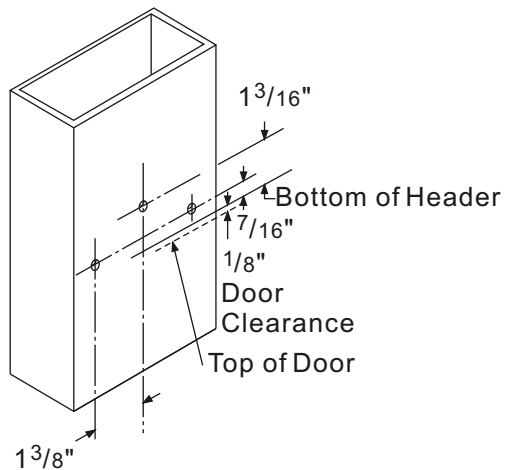


HINGE JAMB

Drill holes for #10 pan head self-threading screws as shown.

Install anchor using #10 x 9/16" pan head self-threading screws.

Moun door header on anchor using 10-32 x 7/16" flat head self-tapping screws.



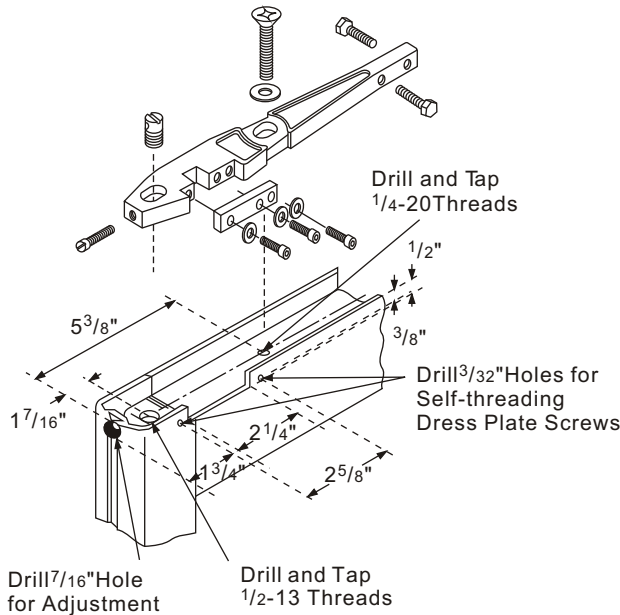


SERVING THE INDUSTRY FROM 17 NORTH AMERICAN LOCATIONS

C.R. Laurence Co., Inc. Toll Free (800) 421-6144 FAX (800) 262-3299

Visit our home page on the WWW at [Http://www.craurence.com](http://www.craurence.com)

SIDE LOADING



TOP DOOR RAIL

"S" Type Side Loading Arm

Drill or drill and tap holes in top of door as shown.

Make 2 1/4" x 1/2" cut-out in top of door as shown. Cut-out must be on the inside of the door.

Install arm using 1/4-20 x 1 1/4" flat head machine screw and 7/8" washer. Install 1/2-13 x 3/4" arm stud and 1/4-20 x 1 1/8" dome head arm adjustment screw. Laterally adjust center of the arm spindle retainer 2 5/8" from hinge edge of door (not including weatherstripping). Center arm in the top rail by adjusting the two 1/4-20 x 1" hex head centering bolts. After installation of door, attach dress plate with self-threading screws.

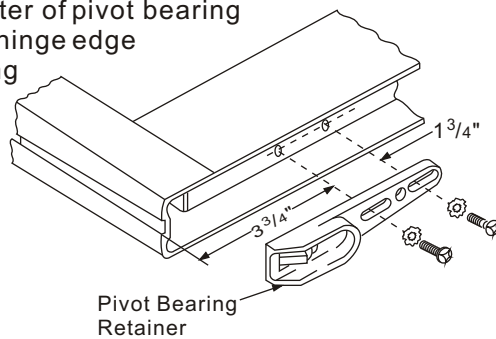
NOTE: before attaching dress plate, make certain the three 1/4-20 x 7/8" socket head clamp bar screws with lock washers are tightened securely.

BOTTOM DOOR RAIL

Side Loading

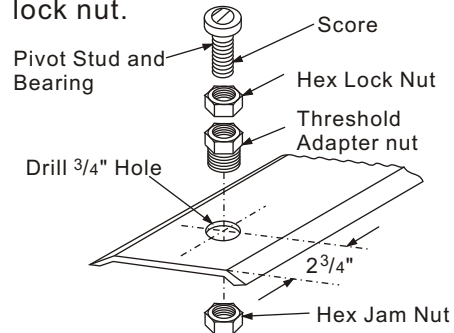
Drill and tap 1/4-20 holes in bottom rail of door as shown. Install pivot bearing retainer in bottom of door using two 1/4-20 x 5/8" pan head machine screws and lock washers.

Laterally adjust center of pivot bearing retainer 2 5/8" from hinge edge of door (not including weatherstripping) and tighten screws securely.



THRESHOLD MOUNT PIVOT

Drill hole in threshold as shown. Install threshold adapter nut from top and secure with 3/4-16 hex jam nut underneath. Install pivot stud and bearing with 1/2-20 hex lock nut as shown and adjust bearing height for proper door clearance and firmly tighten lock nut.



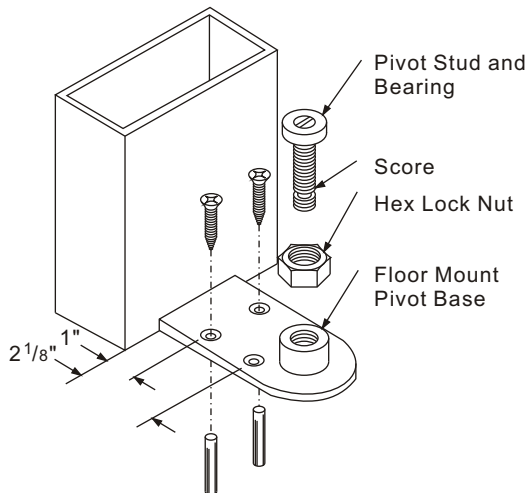
FLOOR MOUNT PIVOT

Center pivot base against door jamb on hinge side. Mark and drill 1/4" holes 1 1/2" deep in floor for plastic expansion plugs. Mount base using #12 x 1 1/4" plastic expansion plugs and #12 x 1 1/4" flat head wood screws.

Install pivot stud and bearing with 1/2-20 hex lock nut as shown, and adjust bearing height for proper door clearance and firmly tighten lock nut.

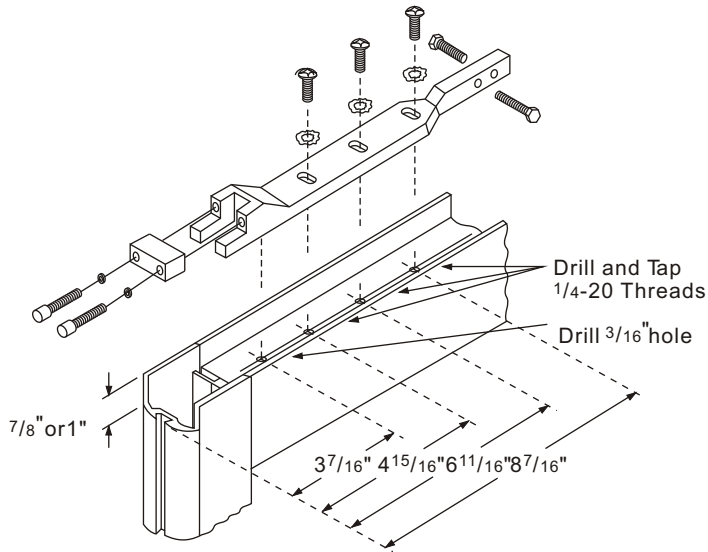
When using threshold, drill 1 1/4" hole for clearance of pivot base on center line 2 3/4" from hinge end of threshold.

NOTE: When threshold is not used, pivot bearing stud must be shortened by sawing off at score 1/2" from bottom





END LOADING



TOP DOOR RAIL

"A" Type End Loading Arm

Make A 1" deep cut-out in hinge edge of door as shown.

"PT" Type End Loading Arm

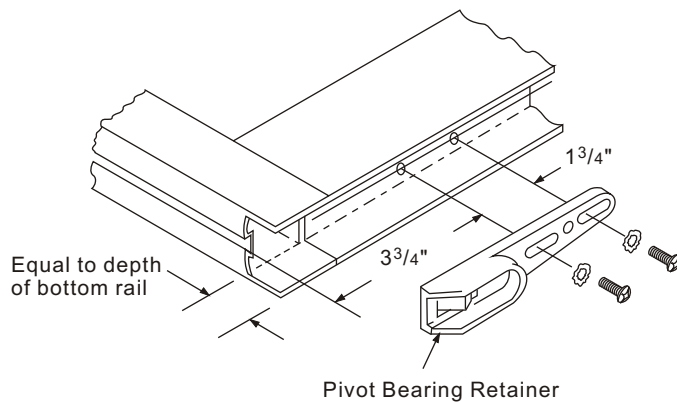
Make a 7/8" deep cut-out in hinge edge door as shown.

Position arm in door by placing arm pin in 3/16" hold. Install arm using three 1/4-20 x 5/8" pan head machine screws and lock washers. Center arm in the top rail by adjusting the two 1/4-20 x 1" hex head centering bolts.

NOTE: After door is installed, the two 1/4-20 x 1" locket head clamp bar cap screws with lock washers must be tightened securely.

BOTTOM DOR RAIL

End Loading

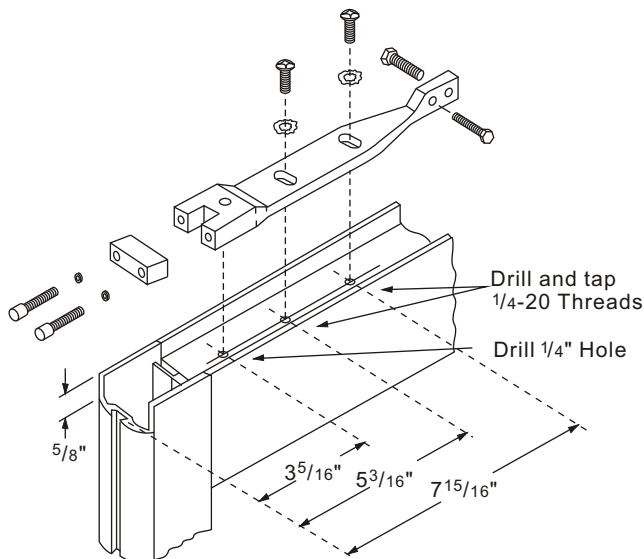


Make cut out in hinge edge of door equal to depth of bottom rail as shown.

Drill and tap 1/4-20 holes in bottom rail of door as shown. Install pivot bearing retainer in bottom of door using two 1/4-20 x 5/8" pan head machine screws and lock washers.

Laterally adjust center of pivot bearing retainer 25/8" (or 2 11/16") from hinge edge of door (not including weatherstripping) and tighten screws securely.

NOTE: For doors with 1" bottom rail depth, pivot bearing stud must be shortened by sawing off at score 1/2" from bottom.



TOP DOOR RAIL

"K" Type End Loading Arm

Make a 5/8" deep cut-out in hinge edge of door as shown.

Drill or drill and tap holes in top of door as shown.

Position arm in door by placing arm pin in 1/4" hole. Install arm by using two 1/4-20 x 5/8" pan head machine screws and lock washers. Center arm in the top rail by adjusting the two 1/4 x 20 x 1" hex head centering bolts.

NOTE: After door is installed, the two 1/4-20 x 1" socket head clamp bar cap screws with lock washers must be tightened securely.