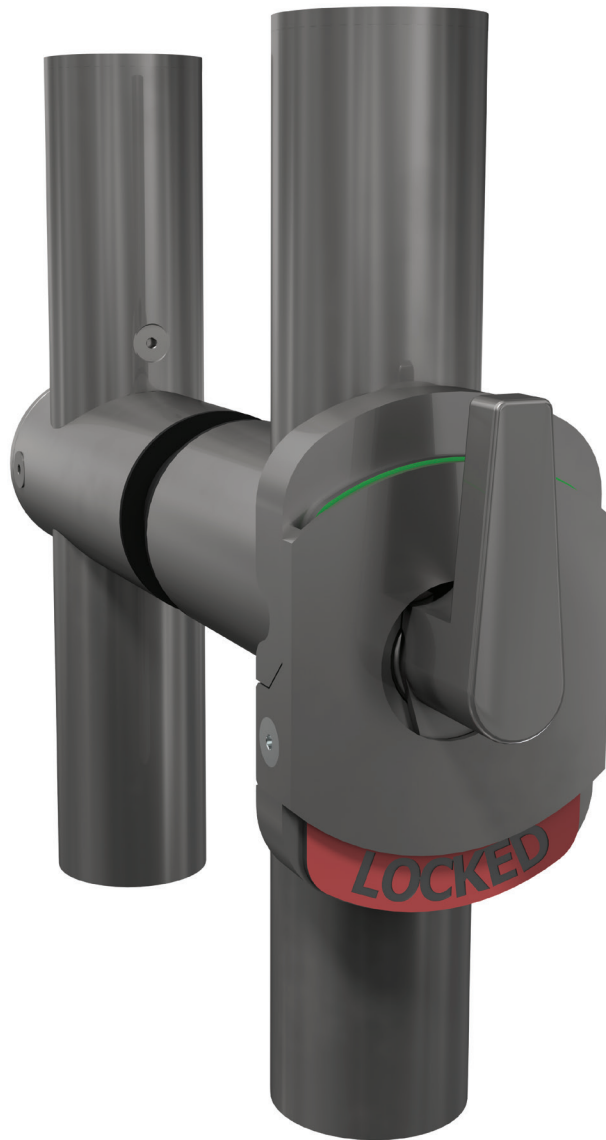


INSTALLATION INSTRUCTIONS

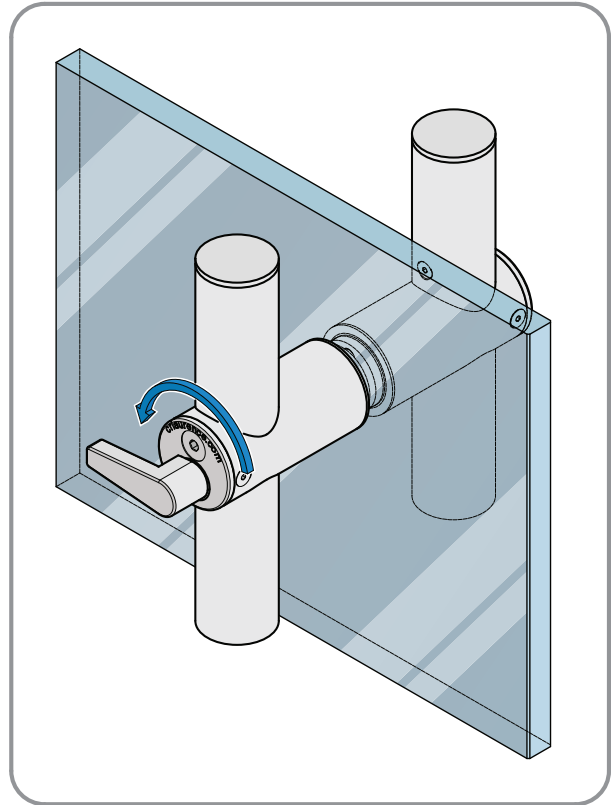
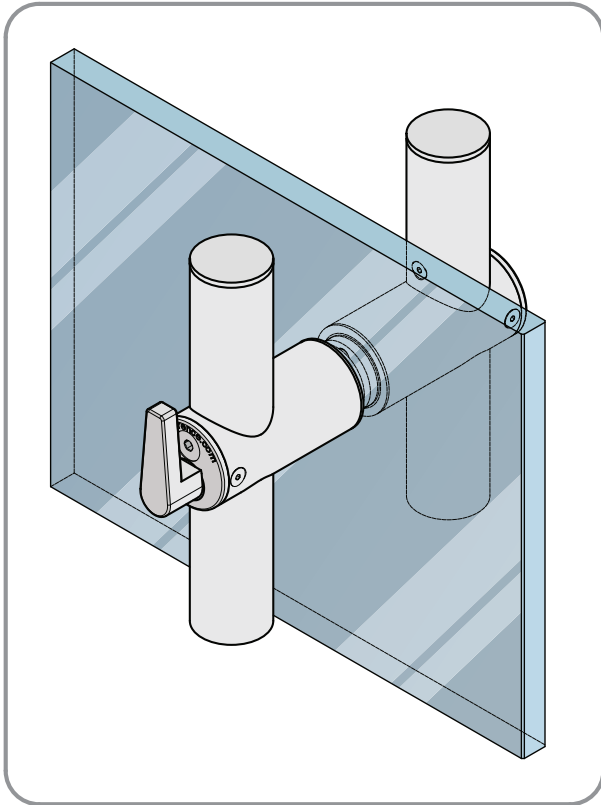
LLPA, LLPUA, DLLPA LOCKING LADDER PULLS LOCK INDICATOR



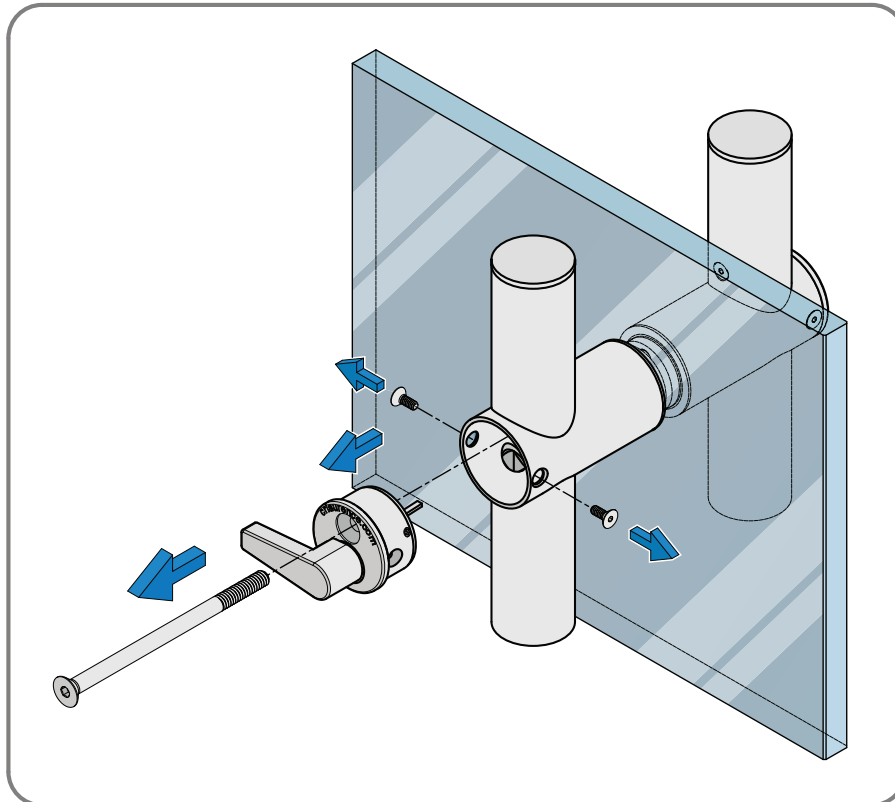
2503 E. Vernon Avenue, Los Angeles, CA 90058-1826
(800) 421-6144 Fax (800) 262-3299
crlaurence.com

LOCK INDICATOR INSTALLATION

1. Turn the thumb turn counter clockwise.

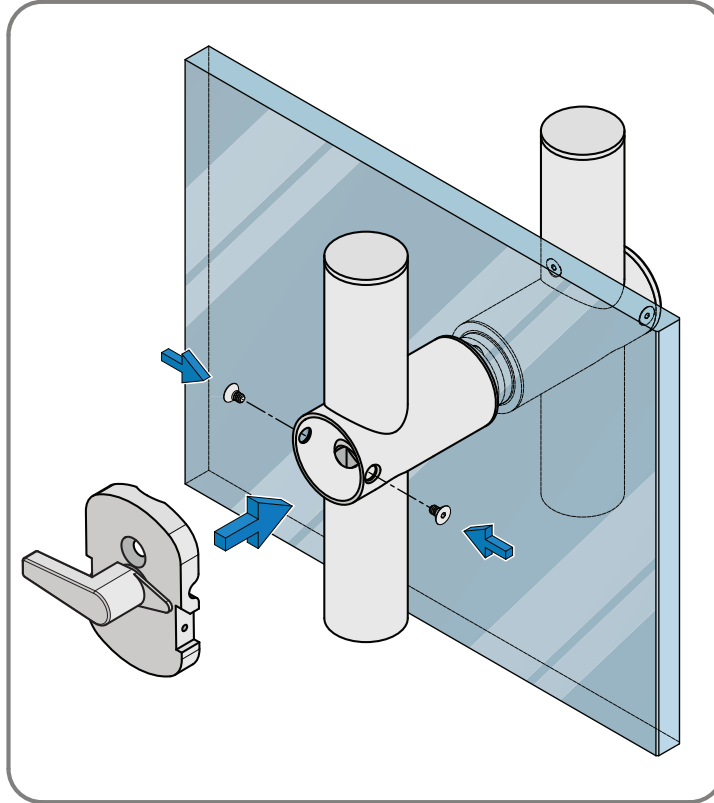


2. Remove the assembly bolt and the two lock housing screws that secure the thumb turn assembly in the lock housing, set these aside for later use during the installation of the Lock Indicator. Remove the thumb turn assembly.

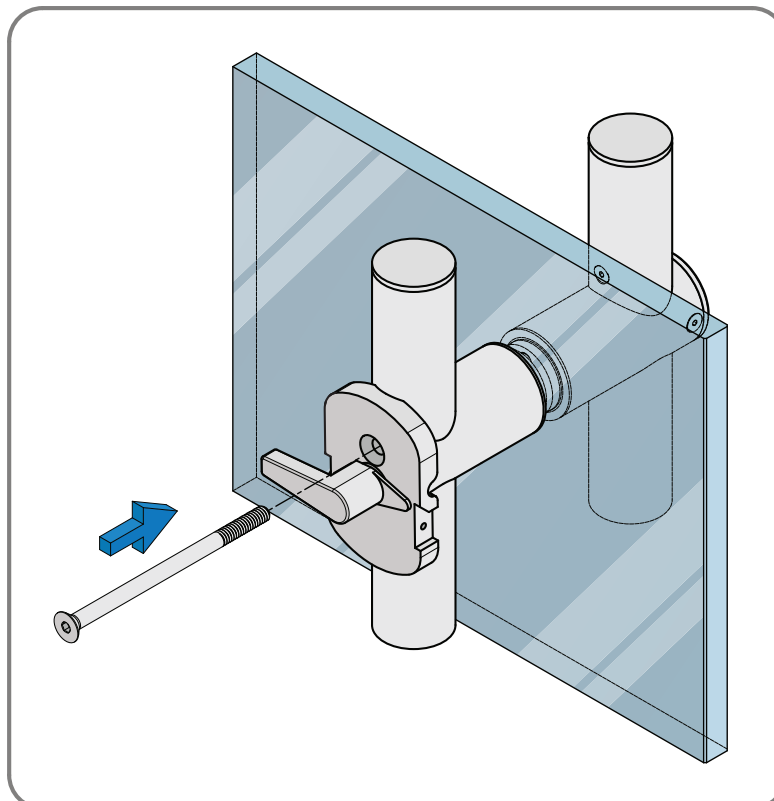


CRL LOCKING LADDER PULLS LOCK INDICATOR

3. Insert the Lock Indicator thumb turn as shown below and secure it to the lock housing with the two lock housing screws.

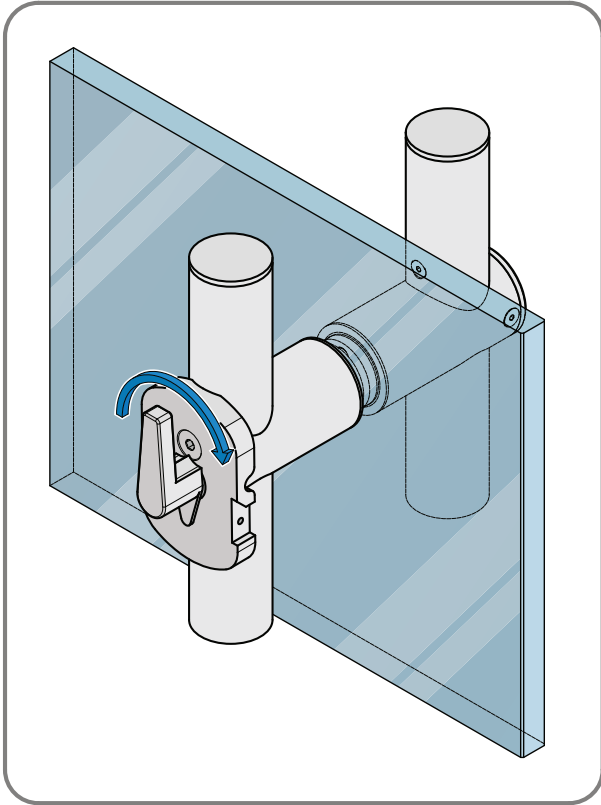


4. Insert the assembly bolt.

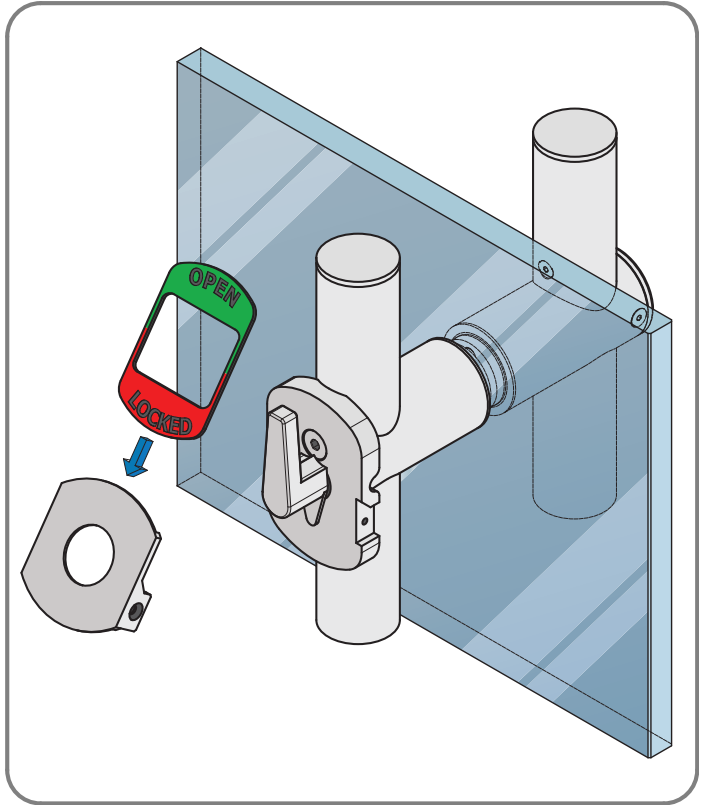


CRL LOCKING LADDER PULLS LOCK INDICATOR

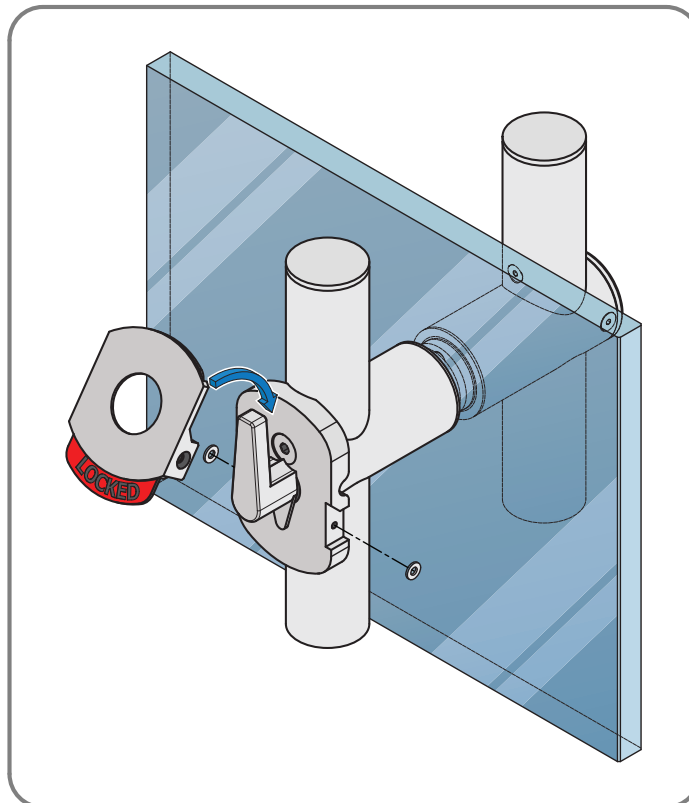
5. Turn the thumb turn clockwise until it is in the up position



6. Slide the indicator plate into the frame.

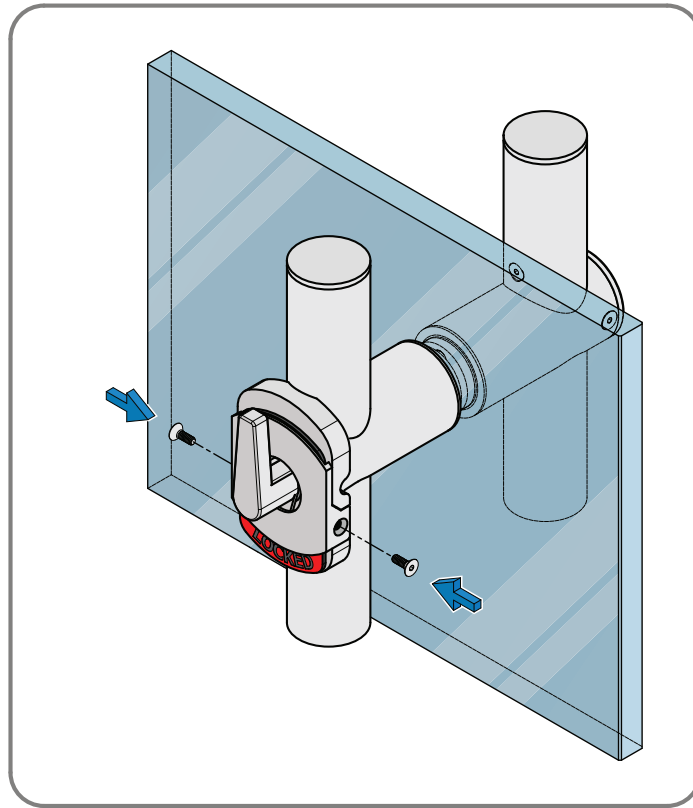


7. Work the assembly over the thumb turn and spacer washers.



CRL LOCKING LADDER PULLS LOCK INDICATOR

8. Secure the cover to the thumb turn using the two cover screws.



NOTE:
THE INDICATOR
IS REVERSABLE
IF REQUIRED.

