

Important Information:

The PH41R Right Hand Sidelite Mount Transom Patch is designed for 2-3/4" (70mm) and 2-9/16" (65mm) setbacks. This dimension is measured from the "finished" door opening to the pivot center line. When using the PH41R Right Hand Sidelite Mount Transom Patch simply reverse the INT300 pivot insert to match either setback.

Specifications:

Glass Sizes: 3/8" (10mm) to 1/2" (12mm) thick tempered safety glass

Construction: High density casting

Cutouts and Holes Required

Includes: Gaskets, screws and template

Insert: (Included) - INT300 Pivot Insert

Accessories: (Included) - None

Available Finishes:

- PH41RA Satin Aluminum
- PH41RBR Polished Brass (Lacquered)
- PH41RBS Brushed Stainless Steel
- PH41RPS Polished Stainless Steel

Use of Gaskets:

For 3/8" (10mm) Glass: Use two gaskets on each side

For 1/2" (12mm) Glass: Use one gasket on each side

Recommendations:

For public safety, we recommend the use of only tempered safety glass.

SEE TEMPLATE ON BACK

Refer to Dimensions Shown

to Ensure Accuracy

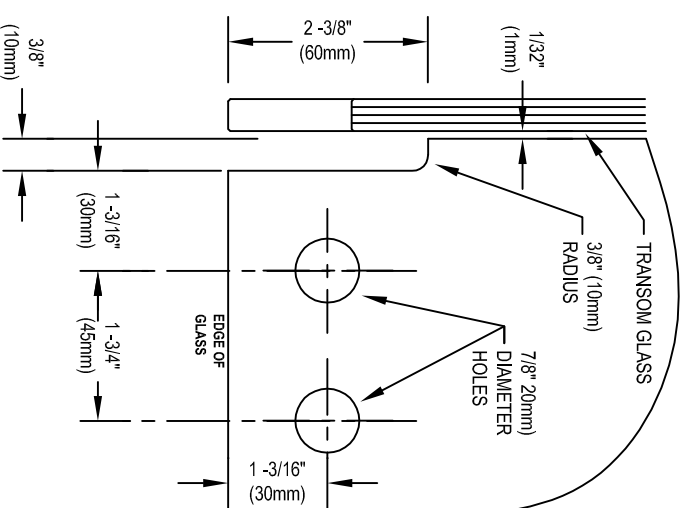
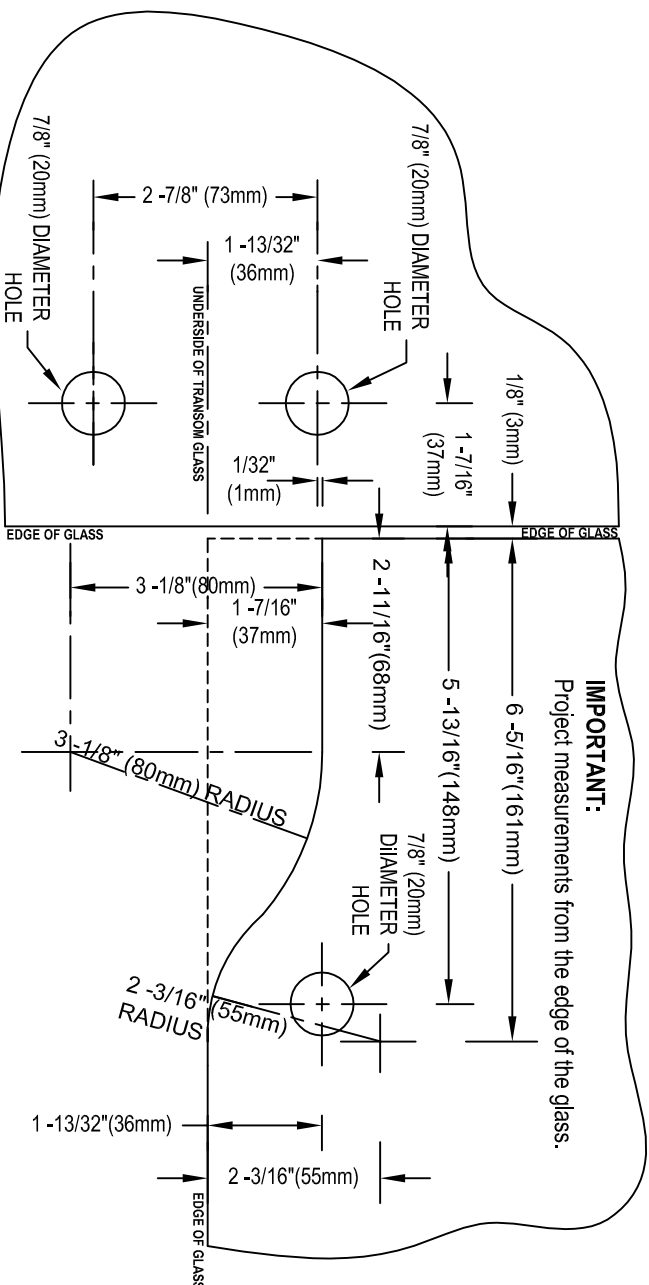
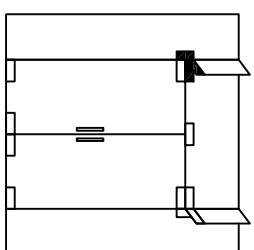
CRL RIGHT HAND SIDELITE MOUNTED TRANSOM PATCH with SUPPORT FIN BRACKET

North American 2-3/4" (70mm) SetBack OR

European 2-9/16" (65mm) SetBack

Includes INT300 Insert, Cover Plates

Cat No. PH41R



CRL RIGHT HAND SIDELITE MOUNTED TRANSOM PATCH

with SUPPORT FIN BRACKET

North American 2 - 3/4" (70mm) SetBack OR

European 2 - 9/16" (65mm) SetBack

Includes INT300 Insert, Cover Plates

Cat No. PH41R

